



SVBONY SV-EP01 Wifi Telescope Camera Instructions

[Home](#) » [SVBONY](#) » SVBONY SV-EP01 Wifi Telescope Camera Instructions 

SVBONY SV-EP01 Wifi Telescope Camera



Contents

- [1 Security Considerations](#)
- [2 Product Features](#)
- [3 Product Part Name](#)
- [4 Key Description](#)
- [5 Charging Instructions](#)
- [6 Automatic Shutdown Instructions](#)
- [7 Description of the LEDs](#)
- [8 Installation Steps](#)
- [9 APP Download for Using](#)
- [10 APP Connection Instructions](#)
- [11 Time Lapse](#)
- [12 FCC Warning](#)
- [13 Documents / Resources](#)
- [14 Related Posts](#)

Security Considerations

In order to prevent injury to the user or other person or damage to property, please read this "Safety Note" and use it correctly.

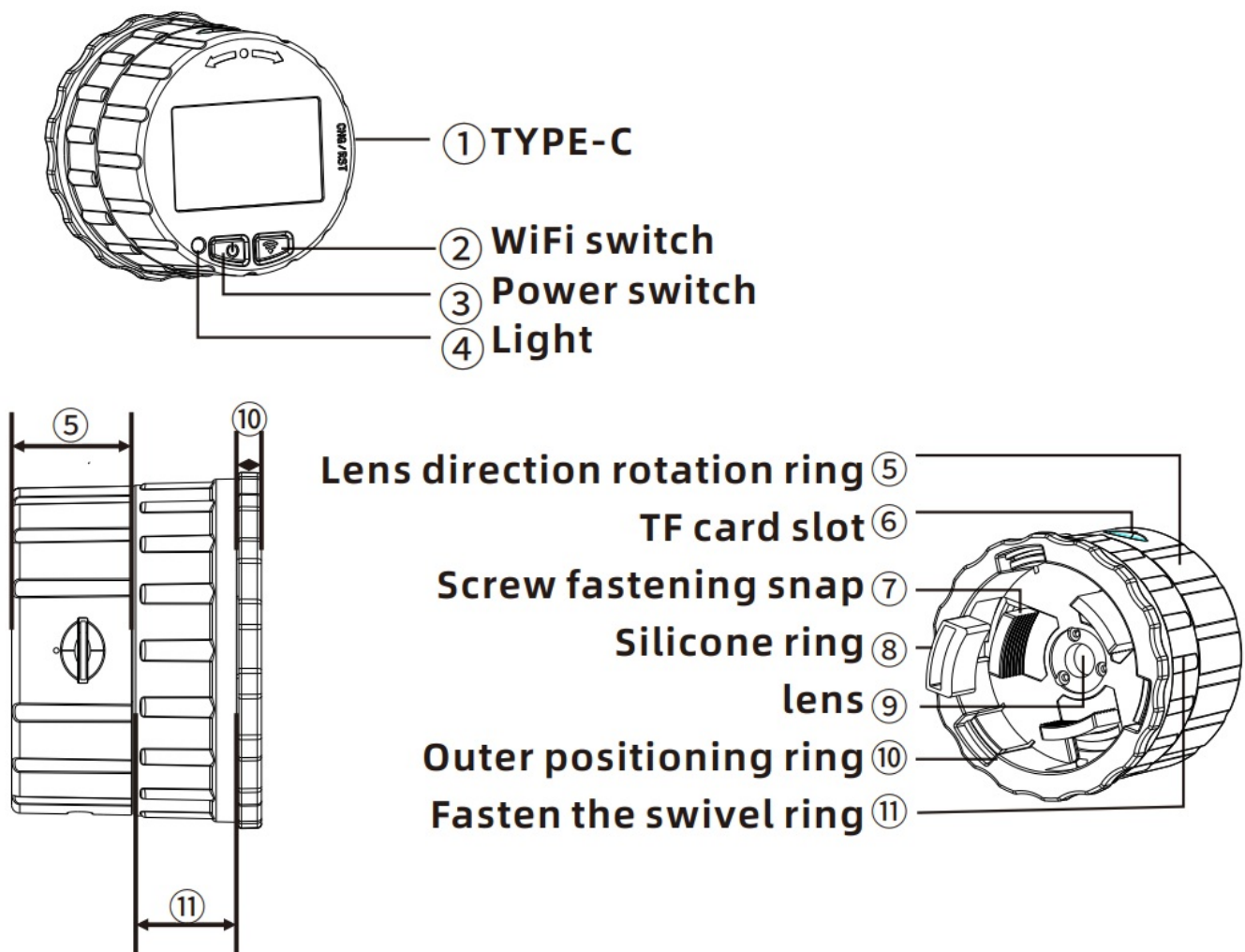
1. It is forbidden to throw the product into water.
2. Do not keep this product and accessories out of the reach of children.
3. Do not disassemble this product without permission.
4. Do not place the product near high temperature (above 60 degrees), high humidity or fire sources.

5. Do not place the product in a low temperature environment (below -20 degrees).
6. When installing or removing the memory card, turn off the power.

Product Features

1. The product can be installed on any optical telescope and microscope (telescope, microscope eyepiece size They can be installed within $\phi 24\text{mm}-\phi 50\text{mm}$), so that they have the function of a camera and can view the scene Objects are photographed and videographed.
2. Easy installation, users can complete the connection with the telescope equipment as long as they rotate slightly.
3. Built-in WiFi, users can connect to its WiFi hotspot through mobile phone for browsing and control.
4. The camera is powerful, It has a 4 million & 4:3 Format sensor, Support up to 16 MP still photos , and 2 K (2304*1728/30fps) or FHD/60 fps video.
5. With time-lapse photography, support time-lapse recording function.
6. Built-in 1500MAh lithium battery, support 4 hours camera.
7. Support TF card.
8. TYPE-C interface, any mobile phone charger can charge the device, and support external connections such as charging treasure Power access, convenient for long-term use.

Product Part Name



Key Description

Power switch: Press and hold for 2 seconds ON/OFF.

WiFi switch: Press and hold for 2 seconds to restart.

Charging Instructions

The product has a built-in 1500mAh lithium battery, and the charger that meets the TYPE-C charging standard can be used.

The maximum charging voltage and current are limited to 5V/2A, and the power bank can be used.

Automatic Shutdown Instructions

If there is no operation in the APP or disconnect the WiFi connection, the device will automatically shut down after 3 minutes. It does not automatically shut down while recording.

Description of the LEDs

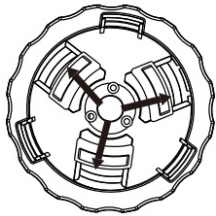
1. After booting: The indicator flashes quickly when waiting for the blue WiFi connection, and after the WiFi connection is established, the blue indicator flashes every 2 seconds.
2. Power off: Solid blue until shutdown.
3. When the battery is low: The red light is always on.
When charging: The green indicator is solid and turns off when it is full.

Installation Steps

1. Hold the external positioning ring to fix its position, turn the fastening rotating ring counterclockwise to adjust the fastening buckle to the maximum position. (Figure 1)
2. The product lens is aimed at the eyepiece of the optical telescope or microscope. (Figure 2)
3. Hold the external positioning ring to fix its position, turn the fastening rotating ring clockwise, and fix the electronic eyepiece without obvious loosening. (Figure 3) Note: The part of the optical eyepiece that makes the product and sleeve is horizontal and tight, and cannot be skewed, otherwise the imaging quality of the image product.
4. Adjust the lens orientation, turn the lens orientation adjustment ring, and let the punctuation point up. (Figure 4)
5. Install the silicone ring, when installing the silicone ring, you should pay attention to the thicker side of the silicone ring wall inward (close to the lens), and then align the fastening buckle and press down to the end, as shown in the figure. (Figure 5)

Note: When the diameter of the eyepiece of the telescope or other equipment $\leq 30\text{mm}$, a silicone ring needs to be installed.

6. When using the device for the first time, please format the TF memory card in the APP settings.



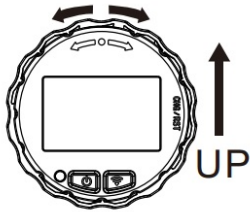
(Figure 1)



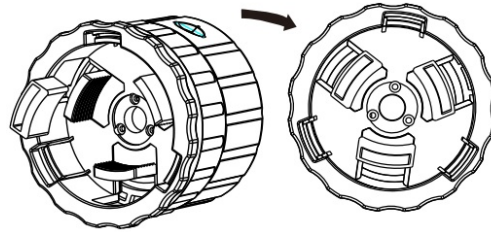
(Figure 2)



(Figure 3)



(Figure 4)



(Figure 5)

APP Download for Using

Download the app:

1.Scanning below QR Code.



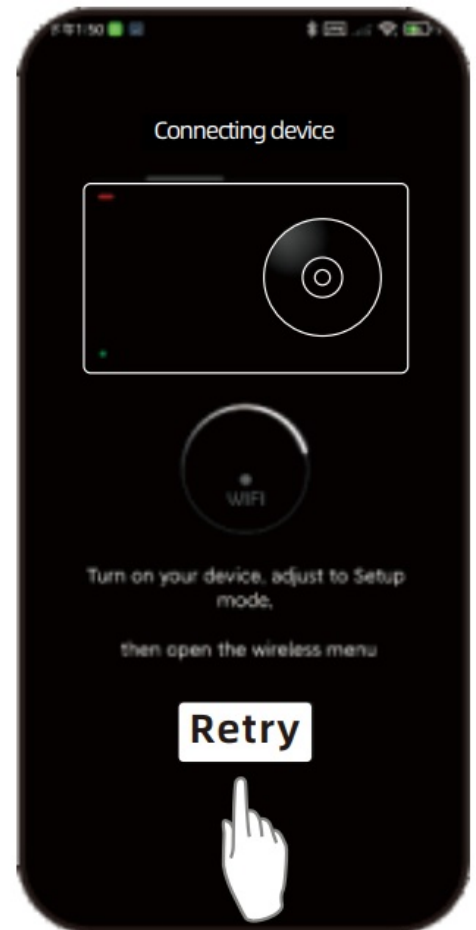
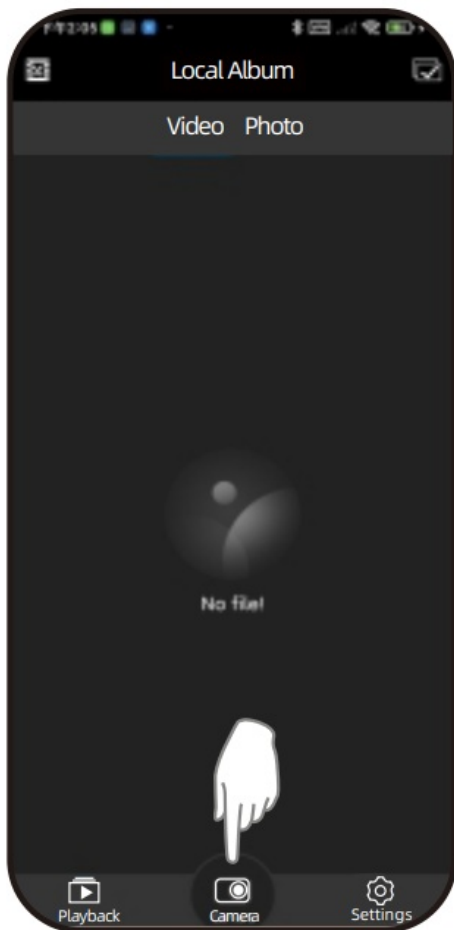
2.Search for the app "[Lercenker](#)" in IOS store / google play.

Note: The software is only compatible with Android 4.4 or later, iOS 7.0 or later.

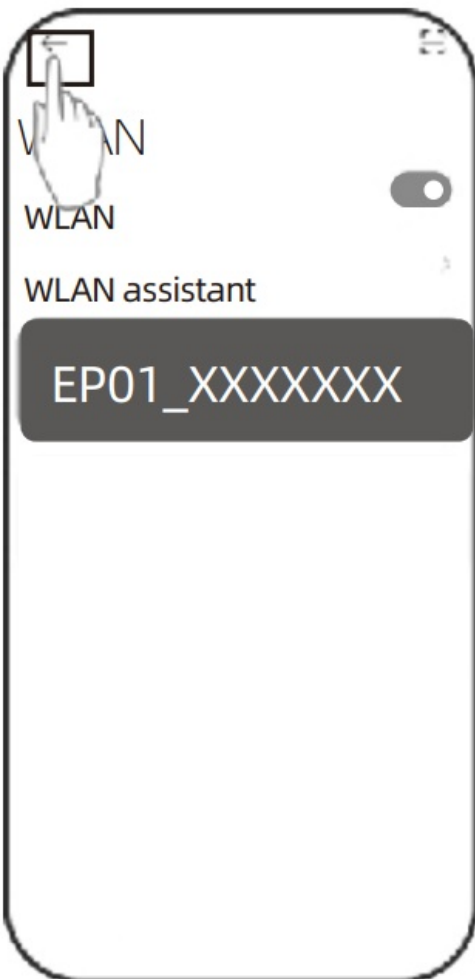
APP Connection Instructions

1. Open "Lercenker" to enter the software interface and click "Camera".
2. Click "Retry" in the software interface.

Note: Ensure that the product has sufficient power and give the necessary authorization!

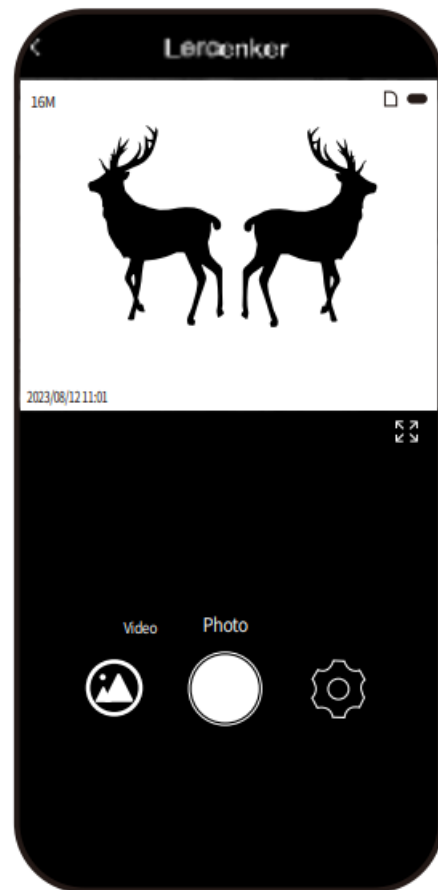
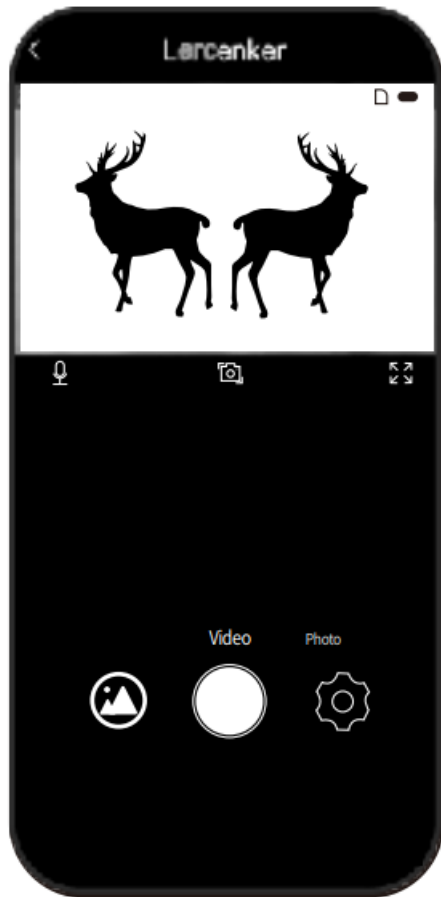


3. In the list of networks, Click the wifi name as “EP01_XXXXXXX”, the password default: 12345678.



Tips: This step you can also do it before start the APP. That means: Setup wifi connection first(when the Cam's blue light flashing fast),start the app later.

4. After the connection is successful, click to return to the software interface.



5. Enter "Video" mode by default, click "Photo" to switch modes.

6. Icon description



Gallery



Recording is on by default, click Close.



Full screen/regular display toggle.



Take a screenshot, only valid in recording mode, tap to take a screenshot. When recording is not turned on, clicking is invalid.

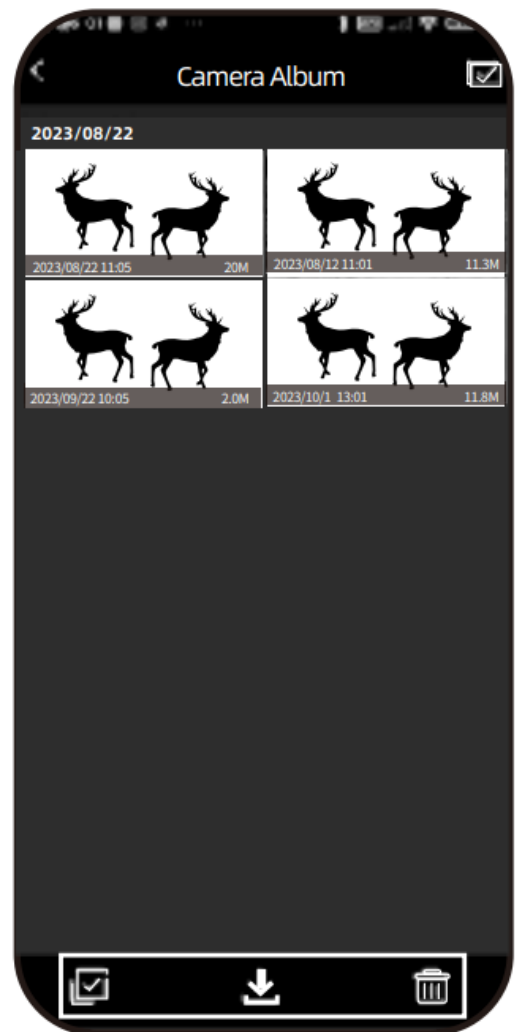
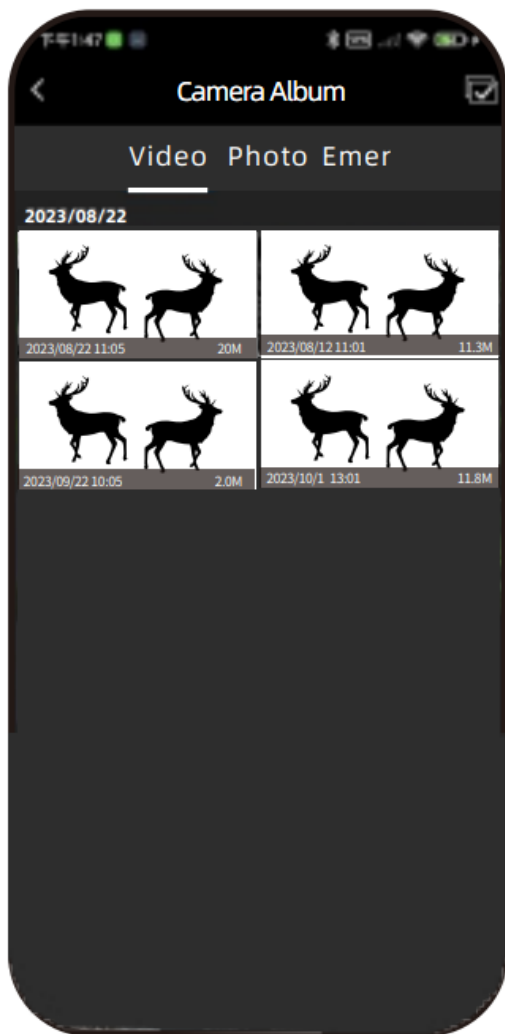


Set up. Click to enter the setting interface.





Tips: When in "Recording" mode, click "Settings" to adjust the recording settings. To adjust the photo settings, you need to switch to "Photo" mode.

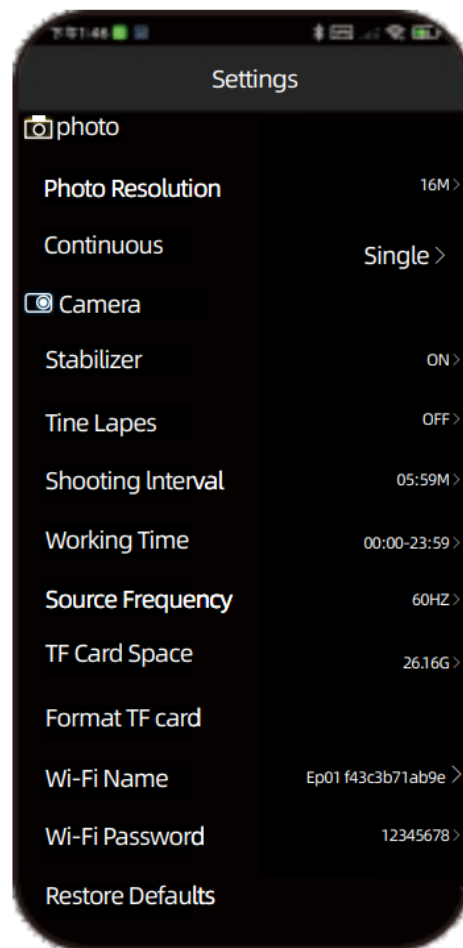
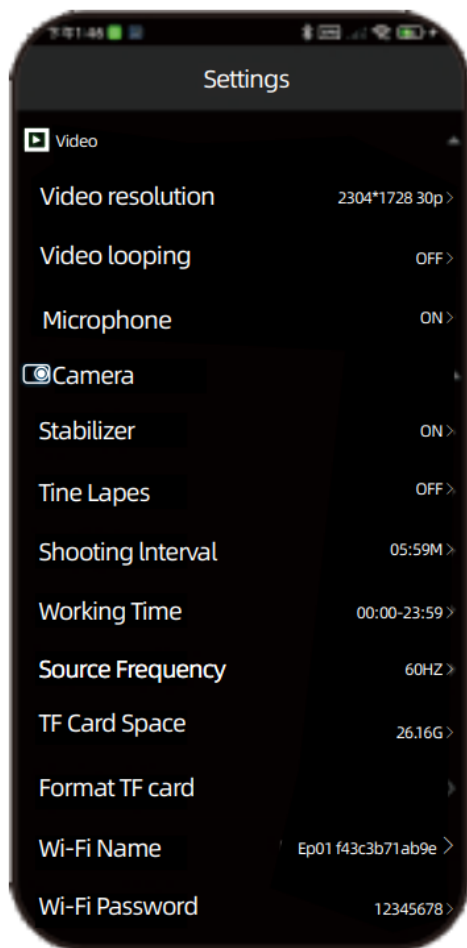


Photo/video execution



7. Browse and download pictures or videos.

To enter the gallery, click “” to enter the selection, Tap “” again to select all pictures or videos, and click “” to save to your phone. Click “” to delete all.



8. “Video” mode and “Photo” mode enter the setting interface in the same way.

Note: Changing the WiFi name or password will open the connection and need to reconnect.

Time Lapse

Time Lapse	OFF
	Timed Recording
	Timed Photo
	Time lapse video
Time interval	00:50S
Working hours	00:00–23:59

In the options, you can set the shooting action according to your needs, and set the interval time for shooting; Select Time-lapse or Time-lapse and the device will start shooting at intervals you set. When the time-lapse recording function is activated, the device will start taking pictures at regular intervals and automatically make these photos into videos. Working hours setting, which sets the camera’s working hours per day when the time-lapse shooting feature is enabled. If not set, it will be executed all day by default.

Note: After the time-lapse shooting function is activated, the device needs to be turned off before the task of time-lapse shooting will begin, and the time-lapse shooting function will stop after the user manually turns it on.

Working time settings.

When the camera’s time-lapse function is enabled, this function sets the camera’s working hours each day.

When the app is connected, the device automatically gets the correct time.


FCC Warning

This equipment has been tested and found to comply with the limits for a Class B digital device, pursuant to part 15 of the FCC Rules. These limits are designed to provide reasonable protection against harmful interference in a residential installation. This equipment generates, uses and can radiate radio frequency energy and, if not installed and used in accordance with the instructions, may cause harmful interference to radio communications. However, there is no guarantee that interference will not occur in a particular installation. If this equipment does cause harmful interference to radio or television reception, which can be determined by turning the equipment off and on, the user is encouraged to try to correct the interference by one or more of the following measures:

- Reorient or relocate the receiving antenna.
- Increase the separation between the equipment and receiver.
- Connect the equipment into an outlet on a circuit different from that to which the receiver is connected.
- Consult the dealer or an experienced radio/TV technician for help.

Caution: Any changes or modifications to this device not explicitly approved by manufacturer could void your authority to operate this equipment.
This device complies with part 15 of the FCC Rules. Operation is subject to the following two conditions: (1) This device may not cause harmful interference, and (2) this device must accept any interference received, including interference that may cause undesired operation.
This equipment complies with FCC radiation exposure limits set forth for an uncontrolled environment. This equipment should be installed and operated with minimum distance 20cm between the radiator and your body.

Documents / Resources

	<p>SVBONY SV-EP01 Wifi Telescope Camera [pdf] Instructions SV-EP01, 2BCXB-SV-EP01, 2BCXBSVEP01, SV-EP01 Wifi Telescope Camera, Wifi Telescope Camera, Telescope Camera, Camera</p>
---	--