



SV3C PG207 Y Series Wi-Fi Camera User Manual

[Home](#) » [SV3C](#) » SV3C PG207 Y Series Wi-Fi Camera User Manual 



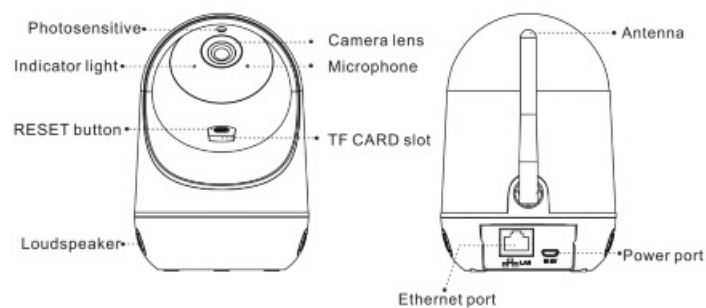
CLICK START GUIDE
FOR SV3C WI-FI CAMERA
(Y Series)
Model: PG207



Contents

- [1 About Camera](#)
- [2 Warm Tips Before Using the Camera:](#)
- [3 Connect Camera](#)
- [4 Camera Settings](#)
- [5 Motion Detection:](#)
- [6 Documents / Resources](#)
- [7 Related Posts](#)

About Camera



1. The indicator light flashes red: The camera is ready for connection.
2. Indicator light stays green: Camera connected successfully.

Warm Tips Before Using the Camera:

1. The camera does not have a built-in battery, need to plug in with a power supply to work.
2. The camera currently supports 2.4G Wi-Fi Only If Wi-Fi is unstable, please keep the Ethernet Cable connected after wireless add successfully.
3. Cloud Storage currently only store videos of motion detection
4. If you want to save all the videos. please insert a TF card over class 1 0 USH1. Recommend to insert an 8-64G TF Card and format the SD card in the app before using it. Insert the TF card when the camera is powered off.
5. After deleting the camera on the app. add the camera again need manually reset the camera.
6. Certain functions such as Human detection, Sound detection. Baby Crying Detection and Time-lapse require cloud service
7. If you have any questions when using the camera or have any suggestions for us, just feel free to contact us here. We will reply as soon as possible to solve your concern

US Service: info-us@sv3c.com

UK Service: info.uk@sv3c.com

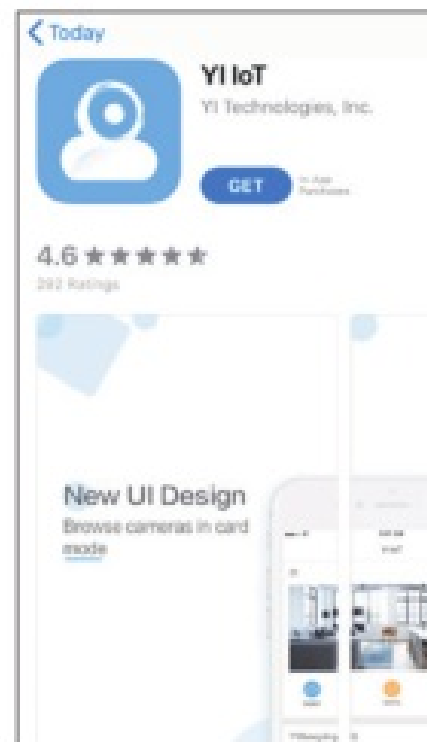
Connect Camera

1. Download APP and register an Account

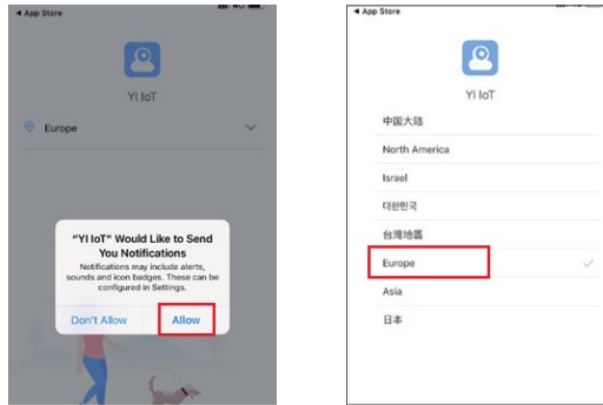
(1) Search the “YI IoT” app on App Store for iPhone and Google Play for Android Phone. or scan the below QR code to download and install.



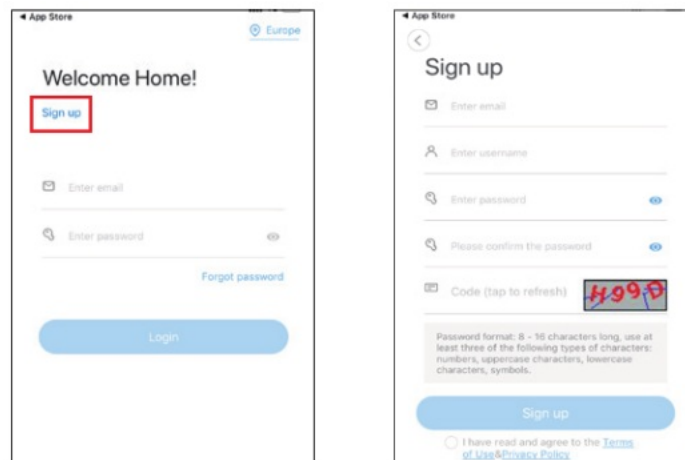
<http://www.yunyiiot.com/yunyiapp/>



(2) Open the app and choose the correct Country or Region, use your email address to sign up.



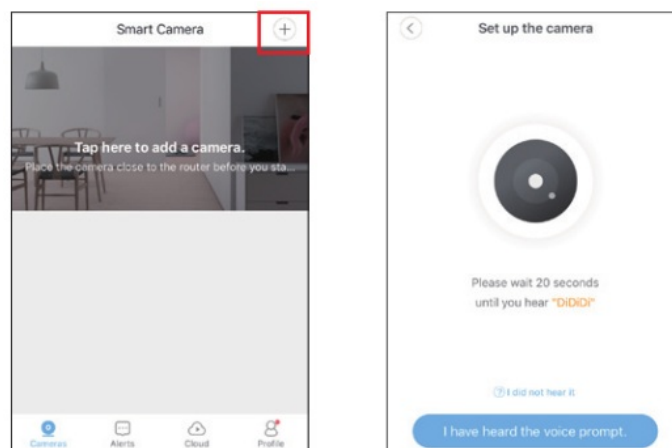
(3) Check your mailbox to activate your account.
(check your mail spam if you cannot see the email), and login after activated successfully.



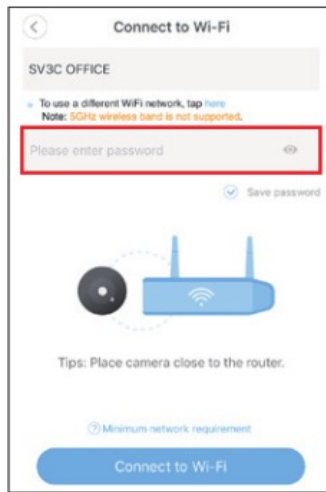
2. Adding Camera (Only Support 2.4G WiFi)

Plug camera in with power source to power on the camera, the camera would rotate automatically and the indicator light flashes red.

(1) Open the app, click the + icon on the main screen to add the camera.
(You will hear the DIDI sound and see the light flashes red when connecting. If you can not hear the "DIDI", please long press the reset button for about 5s to reset the camera).

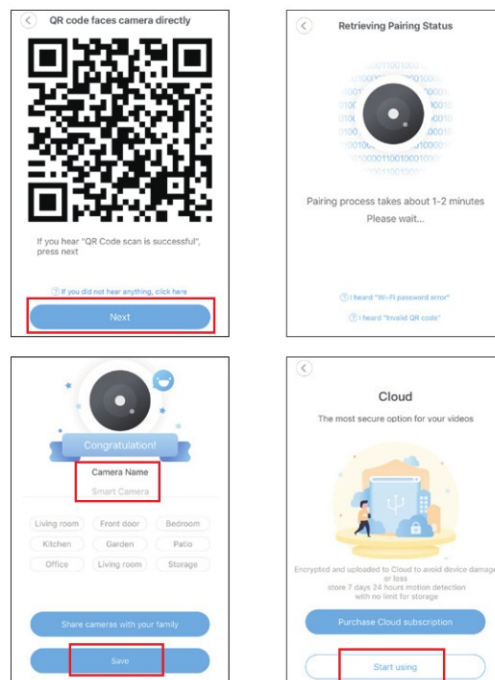


(2) Enter your wifi password and click -connect to Wi-Fi. (This camera can only support 2.4G WIFI, 5G is not compatible. If you are not sure about your wifi, you can contact us. we will help you to check and set)

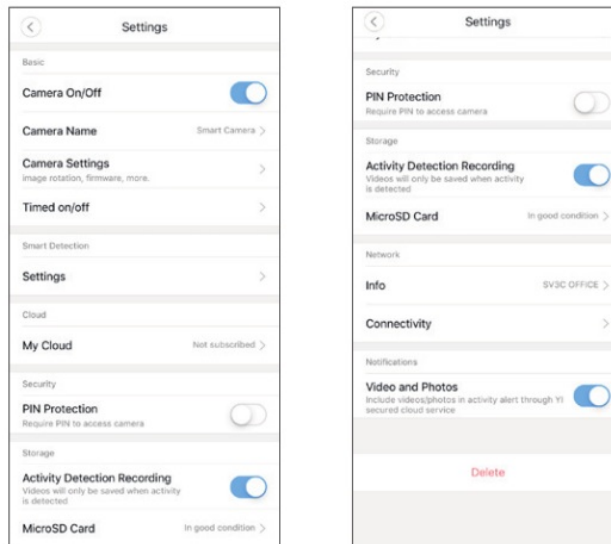


If it fails to connect, please reset and power off the camera to try again. WIFI name and password should not contain any special characters such as "% # \$ @ _ ± .. and blank.
WiFi password should be within 8-19 characters

(3) Face the QR code generated by the app to the camera lens at about 10-15cm directly. Keep your phone screen bright and stable. You will hear 'Wi-Fi connected' in about 10s after the QR code scan successful. click 'Next' and wait for about 30s-1minutes to complete the connection Name your camera and start live view.



Camera Settings



Camera On/Off: You can manually switch on/off your camera through the phone app.

Camera Name: Modify your camera name according to your demands.

Time on/off: Set the camera on/off according to the fixed time after purchasing cloud service (Customize your time to turn on/off the camera automatically after purchasing cloud service)

Settings: Click it to set the motion detection function. (For a detailed introduction to motion detection. please refer to Point 4.)

My Cloud: You can see about your Cloud prerogative, cloud space, video upload service, and subscription service

PIN Protection: Set a password to access your camera to ensure security.

Activity Detection Recording: Open this button to record motion detection video only; close can record all day videos.

Micro-SD Card: Check if the SD card is recognized and format the card here. The status only is displayed after your micro-sd card is inserted in the camera.

Info: Check your Wi-Fi information.

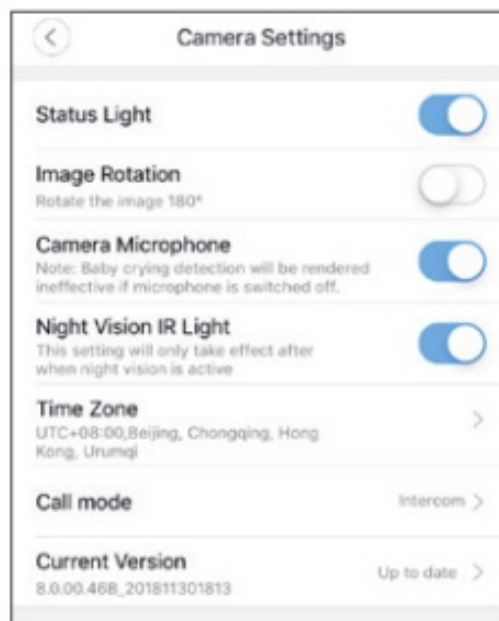
Connectivity: Show the connection status of Wi-Fi.

Video and Photos: Video and Photos alert

(Please keep this default on when you use the motion detection function).

Delete: Delete your device on your phone app.

Click "Camera Setting", then you will enter the following interface.



Status Light: Turn the status light on/off according to your demands.

Image Rotation: Rotate the image 180° If your picture is inverted.

Camera Microphone: If closed. there is no sound during the entire recording process, It is recommended to default on.


Night Vision IRR Light: You can turn on/off IR light to avoid light pollution, and the night vision effect would be the same as the light is on.

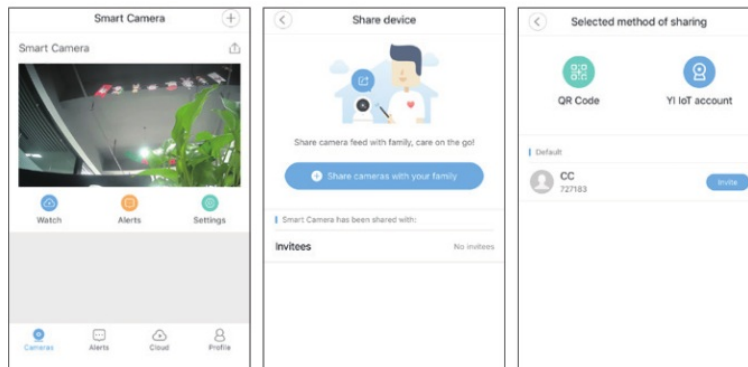
Time Zone: Choose the time zone according to your local city.

Call mode: Two-way audio, you can choose intercom or hand-free mode(Specific functions please refer to the screenshot below).


Current Version: You can upgrade the Firmware version.

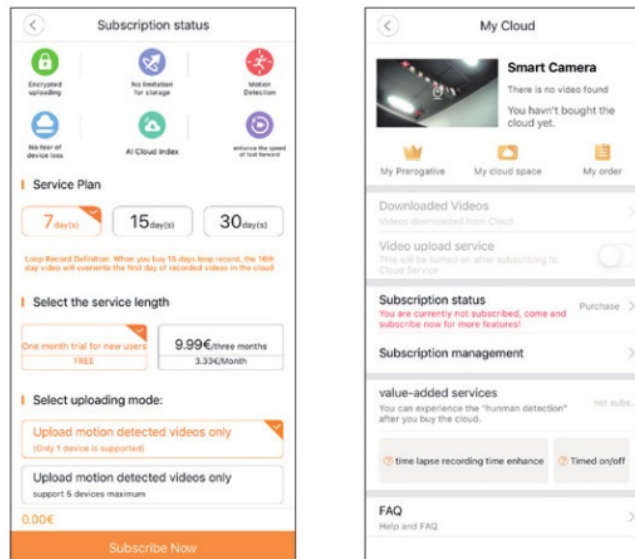
Share Camera

1. Click the  icon, then you can easily share the camera with your family.
2. "QRCode" and "YiIoT account" are available for you to invite. (The invitees can scan QR Code in the lower right corner of the profile.)
3. Sharing camera to max 5 guest accounts. Guest accounts can watch video live view and use two way audio, but can not access the camera setting page.



Cloud Storage

1. You can enjoy more value-added services after purchasing the Cloud subscription. it all depends on your own needs. (For the new user. you have one month trial for free)
2. Click the  icon to purchase cloud storage directly. then you can view cloud storage information and enjoy value-added services: Time on/off, Human detection, Fast playback speed increase, Storage motion detection video. AI Cloud search and so on (The detailed description of these features can be found in Cloud Service!).



TF card

1. Inserting SD Card Support high speed over class 10 TF card up to 64G.

NOTE: Please power off the camera before inserting /removing the micro SD card. Failure to do so may result in damages to the camera or memory card.

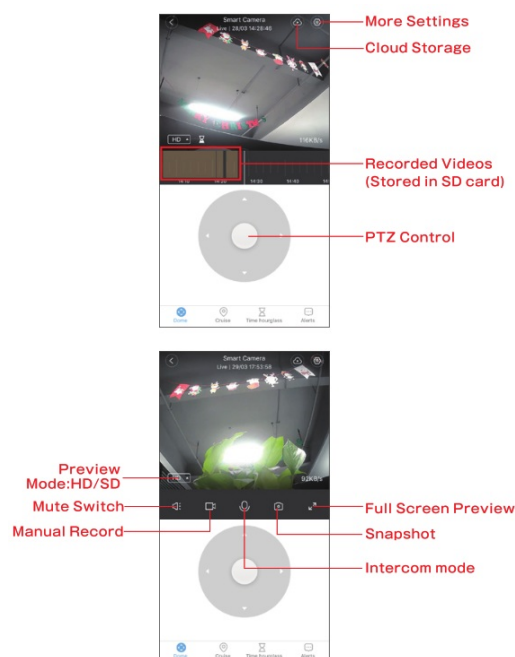
Below are the pictures of the reset button and SD card slot.

2. Video Playback

After the TF card is inserted, all-day recorded videos would be saved to the card automatically and you can playback recorded video footage in the app directly.

Go to the real-time page. Recorded Video footage is displayed in brown. You just need to slide back to check the videos. If you do not see brown parts.

please remove the card and insert it again.



Motion Detection:

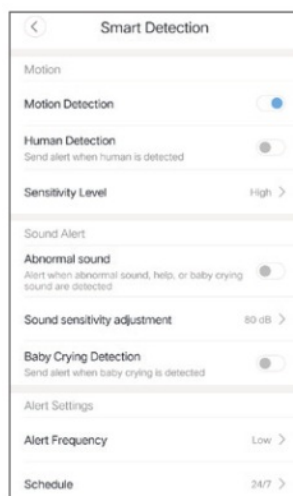
Note:

1. You can choose either all-day recording or motion detection recording. If you want to save storage, you can choose to record only motion detection videos on the SD card. just turn on the. option Activity detection recording in the settings.

Turning the option off means all-day recording on default.

2. If you did not insert the SD card, the app would push a 6s video of motion detection to your phone when motion detected. you can check the video in Alerts'. This alert video is an app cache. If you clear the app cache, the video will also be cleared.
3. If you had inserted the SD card and purchased the cloud service at the same time. the motion detection videos would be recorded and saved to both the SD card and the cloud. Now you can follow the process to set up motion detection.

Click into Settings Smart Detection Settings



Motion:

Motion detection: Turn on motion detection

Human Detection: Effectively avoids false positives caused by flying insects, pets, and light changes. and will detect humanoid start alarms. (This function can be used after you purchase cloud storage).

Sensitivity Level: You can adjust alarm sensitivity from low to high depending on your own needs

Sound Alert:

Abnormal sound: The function can help you record video when anyone makes a sound or a baby crying in front of the camera, after clicking Alerts to view the pushed alarm messages and view the alarm video. (This function can be used after you purchase cloud storage).

Sound Sensitivity adjustment: Adjust the sensitivity by choosing different sound decibels. Requires cloud service for this function

Baby Crying Detection: You will receive alerts when a baby is crying is detected. Requires cloud service for this function

Alert Frequency:

Low: The app would only push notifications and a 6s video cache to your phone within 10 minutes even when several alerts are triggered. You can view all notification video cache in the alerts)

Medium: 5 minutes

High: 3 minutes

TF card and cloud service recording are not affected by this function

Schedule: Usually the motion detection defaults to be on all day after you turn it on in the settings. But you can also customize the motion detection time depending on your needs. You can set at most 3 time periods. just click Customize'to set.

After you had set motion detection. you can view the motion detection videos on the real-time page.



Sample Description: IP Camera

Trade Mark: SV3C

Model number: PG207



Customer Service:

info.uk@sv3c.com

info-us@sv3c.com

Documents / Resources



[SV3C PG207 Y Series Wi-Fi Camera](#) [pdf] User Manual
PG207, Y Series Wi-Fi Camera, Wi-Fi Camera