



# Surplife BRGRCR001 LED Wi-Fi Bluetooth Controller Instruction Manual

[Home](#) » [Surplife](#) » Surplife BRGRCR001 LED Wi-Fi Bluetooth Controller Instruction Manual 



## Surplife

USER INSTRUCTION



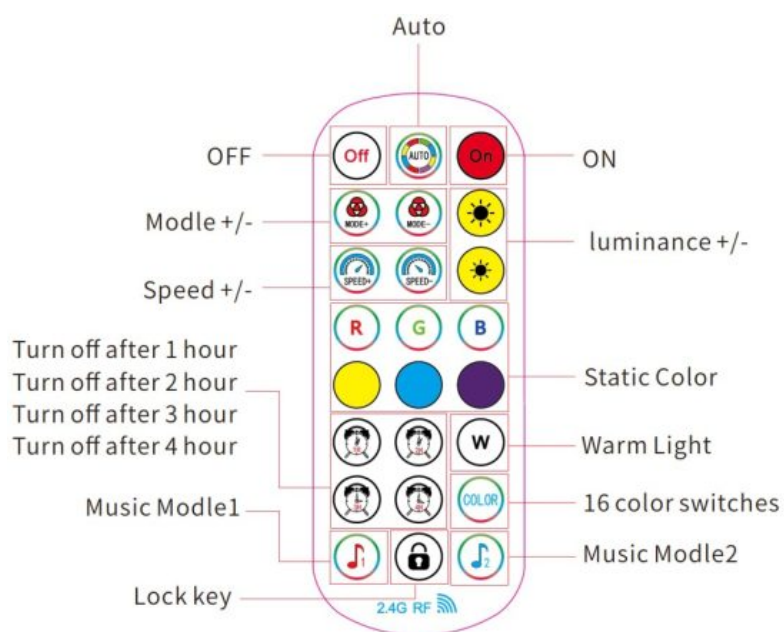
### Contents

- [1 Product Parameter](#)
- [2 Download APP](#)
- [3 Attentions](#)
- [4 Documents / Resources](#)
  - [4.1 References](#)

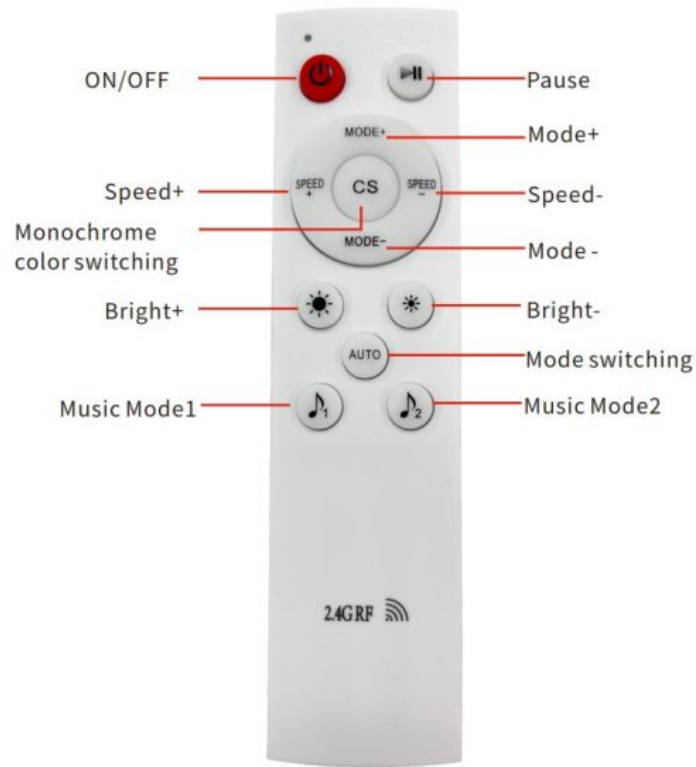
### Product Parameter

Category	LED Controller
Domination Principle	WIFI
APP	Surplife
Operation Platform	Android 7.0/IOS 12.0 or later
Input Voltage	24V 36V 48V
Supported Driver IC	SPI:RGB,RGBW,SM16703P, WS2812E, UC1903B, ASL140140, IC2811F, TM 1814, WS2815B, WS2812B, SM16703, SM16704, WS2811, UCS1903, SK68 12, INK1003, UCS2904B,
Signal Output	Support one-wire driver IC, able to control up to 2048 pixels
Working Temperature	-20~+55°C
Control Distance	Visibledistance30M
Certification	CE, RoHS, FCC

**Remote control (the following remote control is optional)**



First press: Except open and key, other keys are invalid)  
(Second press: all functions are valid; And so on)



## Download APP

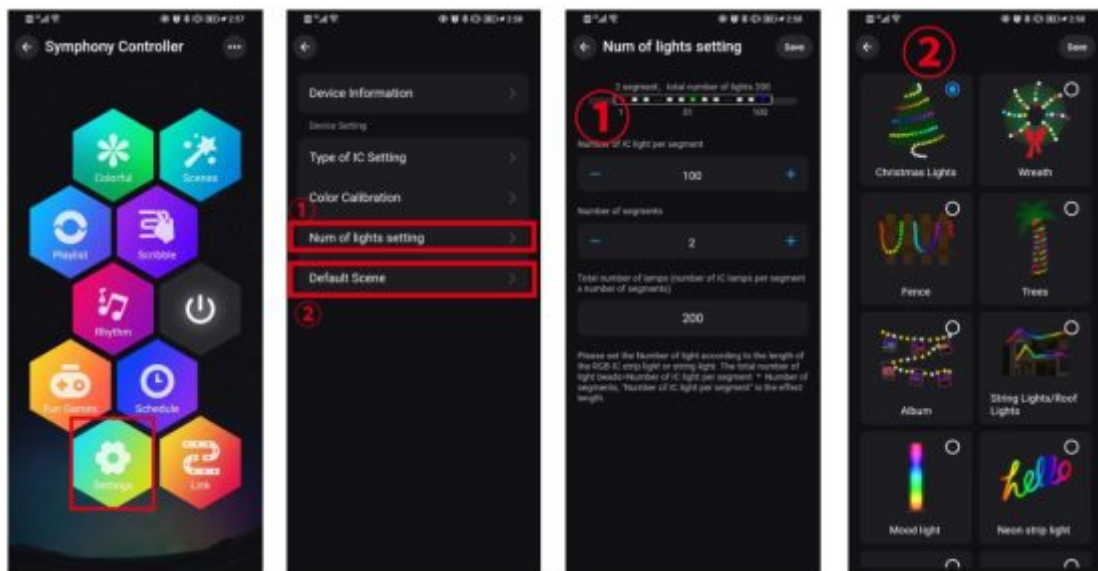
The Surplife app can be downloaded from the App Store or Google PLAY Store, or you can sign in by scanning the code.



<https://faqsys.magichue.net:4489/wifi/page/download/surpLife>

### 1. About Settings:

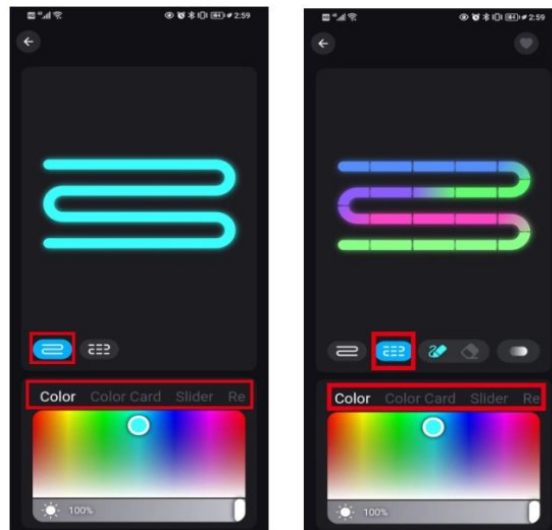
- 1) In the setting interface, you can set the IC model, color calibration, number of points (Total number of points can not exceed 500 in each segment and total LED chips quantity can not exceed 2048)
- 2) The setting of IC number is applied to the scribble function



## 2. Detailed introduction of APP functions:

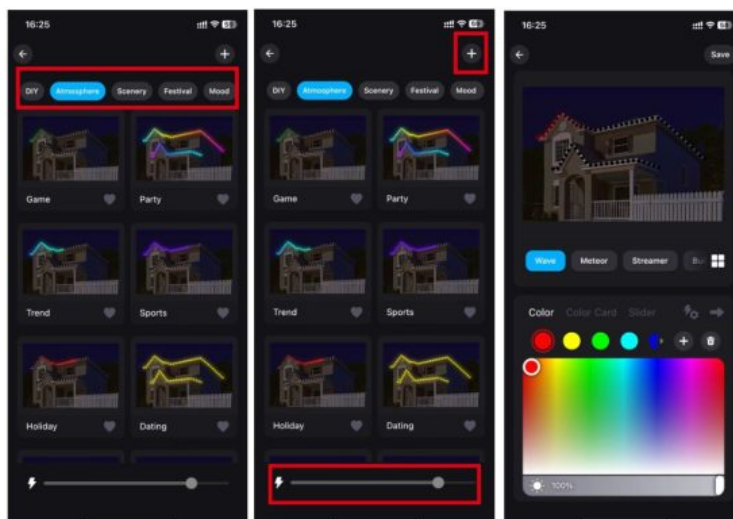
### A) Multi color function

The color of the light can be adjusted by the whole and each segment. App provides different columns for color selection or editing, and the brightness can also be adjusted. In the segmentation interface, users can freely smear or erase the color of each segment, and also set the gradient effect.



### B) Scene settings

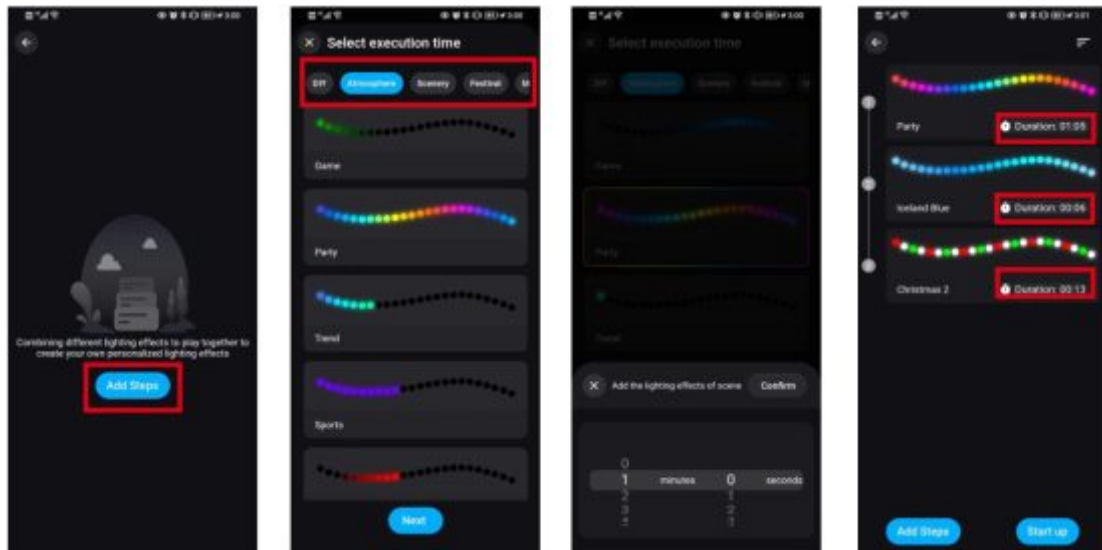
There are Four Build-in scenes: "Atmosphere", "Life", "Scenery", "Festivals", "Mood", and click "DIY" or "Collection" to create your favorite light effect.



### C) Playlist mode

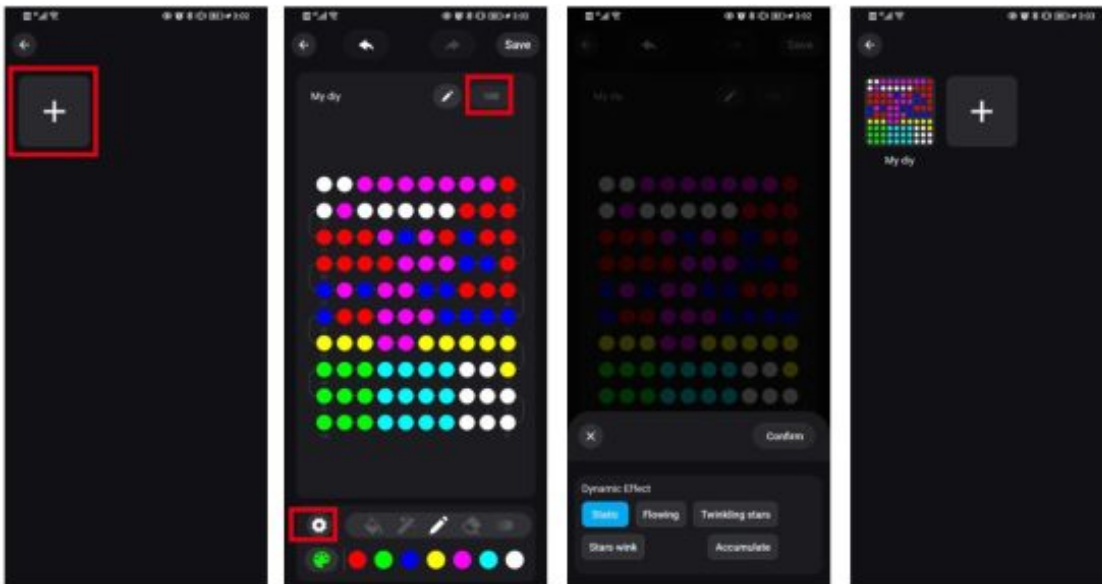
Multiple light dynamic modes built in, can set the time of lighting effects and enter cycle mode. Select different scene modes, then set the duration of each scene respectively, and play it by combining the sequence of different

lighting effects.



#### D) Smear function

Click the plus sign to customize the light color and dynamic effect, and click Save after setting. (Make sure that the number of lights is consistent with the equipment before DIY, otherwise the lighting effect is incomplete, please edit the number of IC lights in the "Setting" function)

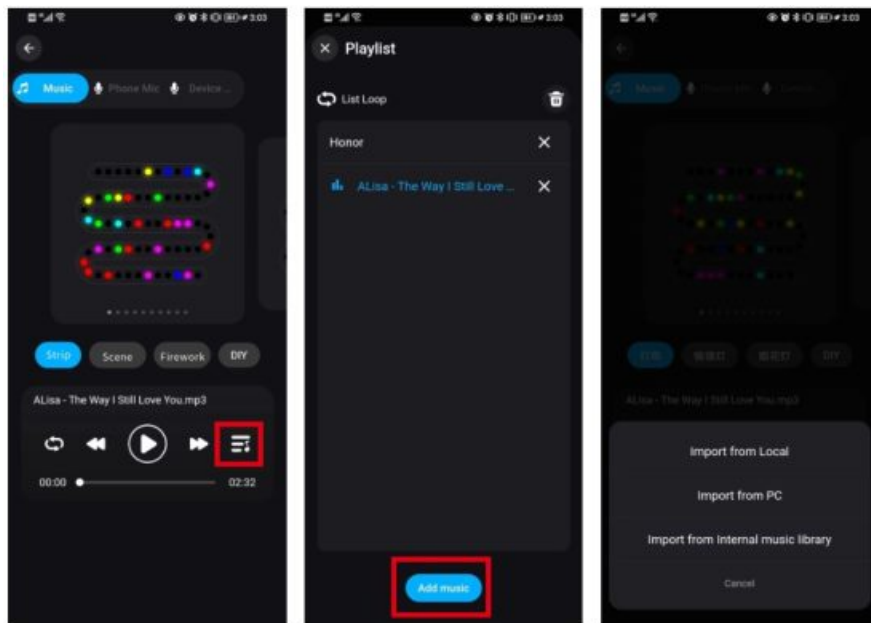


#### E). Music Mode

##### 1. Synchronization function of lighting and music rhythm.

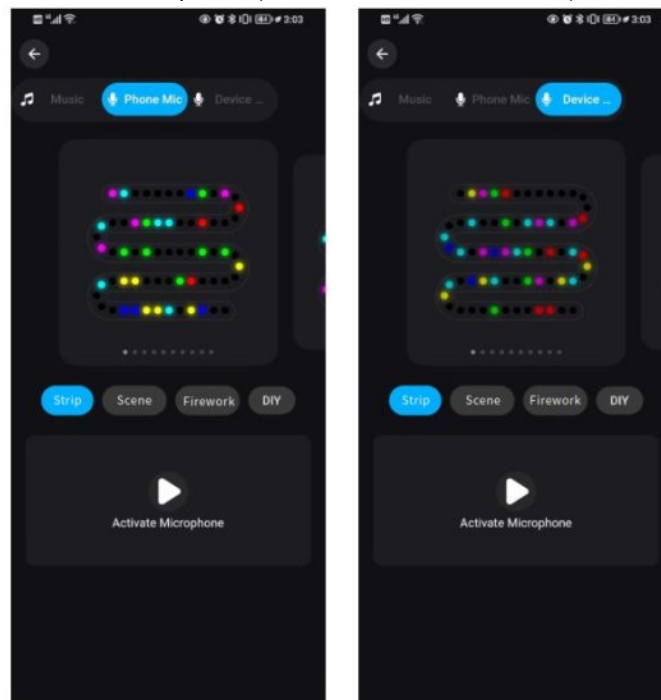
Click "Add Music" > Import a music file or import it from the built-in music library.

**Note:** IOS system needs to download music files to iTunes or import music from PC according to the instructions, Android system needs to download music files to mobile phone to use.



## 2.MIC

The lights color will change with the sound rhythm when your phone microphone catches the sound. The microphone sensitivity can be adjusted by the slider. There are two ways to input the audio signal on the controller, built-in APP microphone and external microphone(For sound control version).

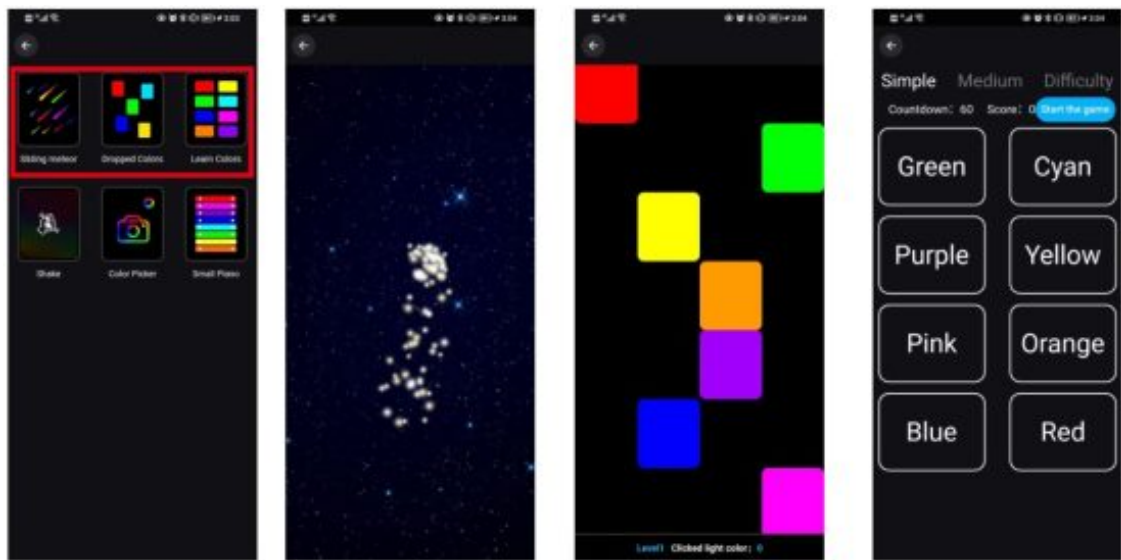


## F). Fun game

There are 6 fun games to play (sliding meteors, falling colors, recognizing colors, shaking, color picker, baby piano)

- Sliding meteor: You can draw different meteors on the screen at will, and the light changes with the meteors.
- Dropped colors: look at the light to choose the color, according to the color of the light, click the falling color block.
- Learn colors: look at the light to select the text, observe the color of the light, click the corresponding text.

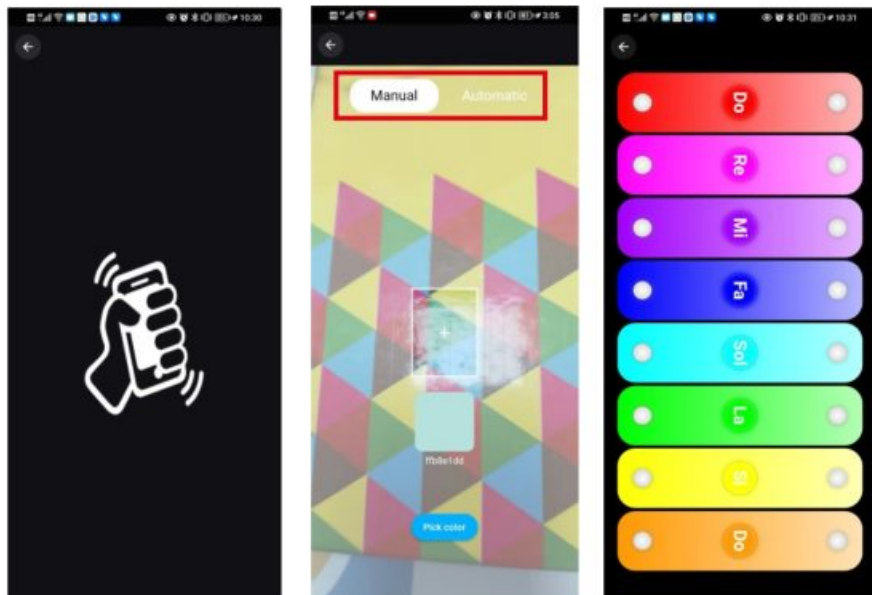




e) Shake: The light changes with the shaking of the phone.

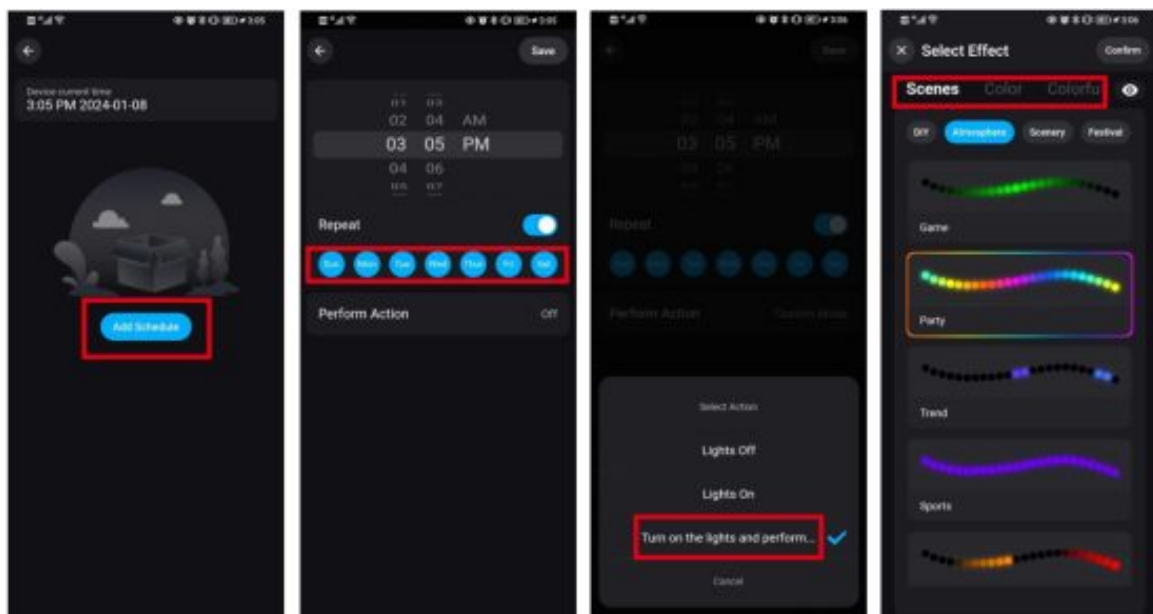
f) Color picker: the light follows the color captured by the mobile phone to take color changes, you can take color manually or automatically.

g) Small piano: The lighting changes with the rhythm of the piano.



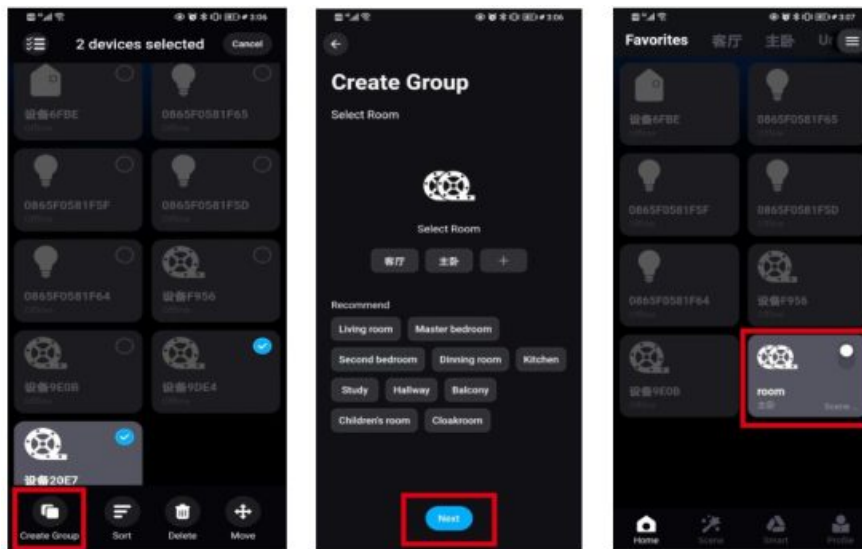
### G) Light timer

Smart lights automatically come on and off at given times through the timer function, choose your favorite effect and color then save it.



### H) Group Control

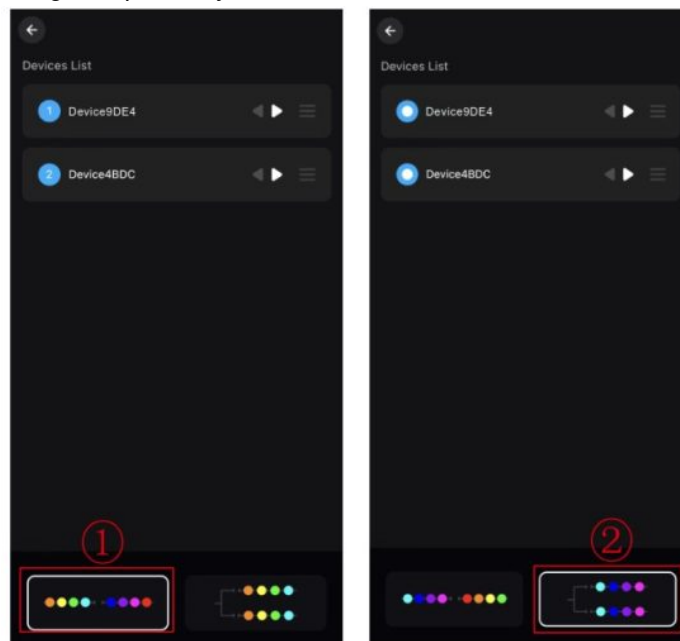
This mode allows you to create different groups to control more than one controllers at the same time.



### I).Link

Setting a group for the strip lights, enjoy the linkage lighting effect. Hold and drag the device on the list to change the order and the direction.

- 1) The grouped light strips synchronized Linkage
- 2) The grouped light strips change sequentially

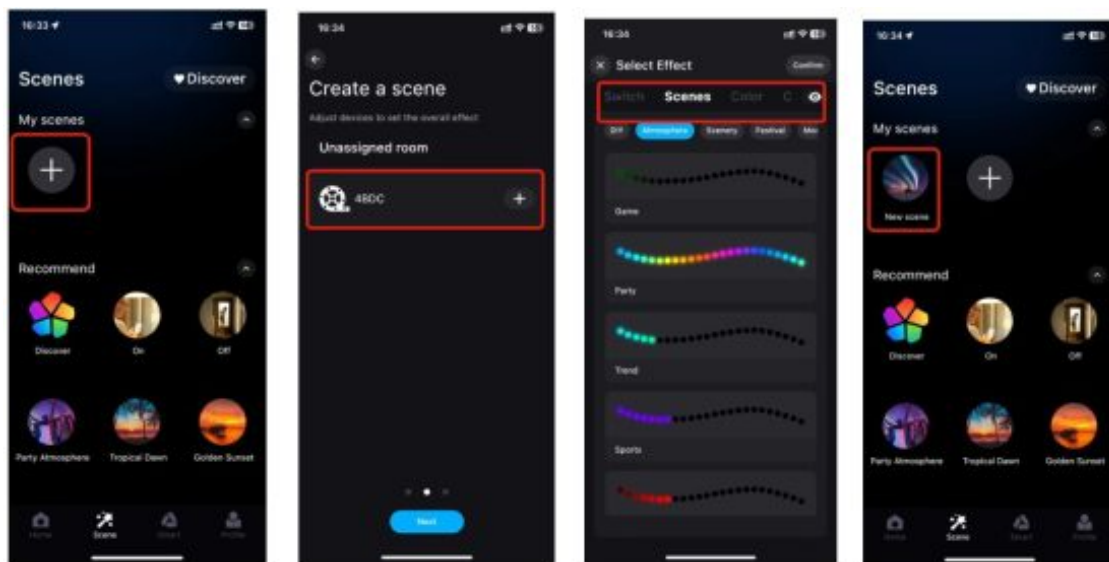


### J). Apple IOS system widget added (also supports Android phones)

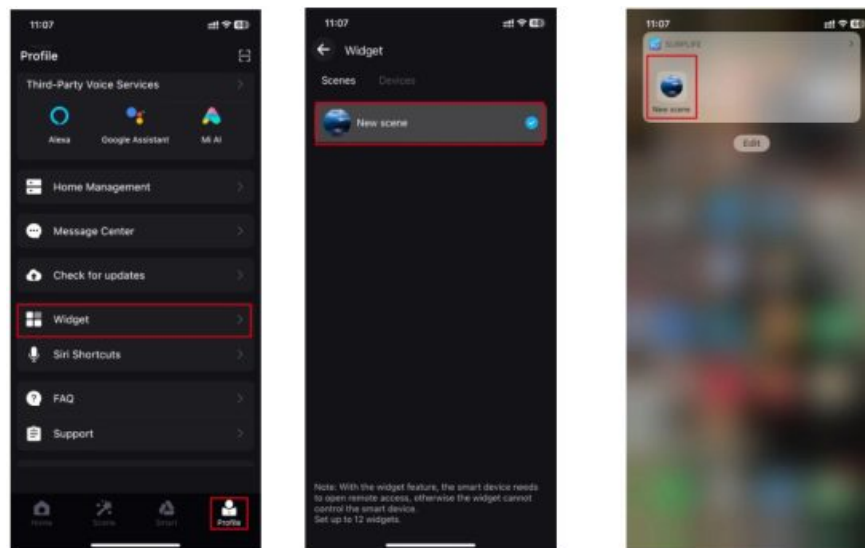
Steps:

1. Create ascene for your light, and add acomm and for him when you use the widget.





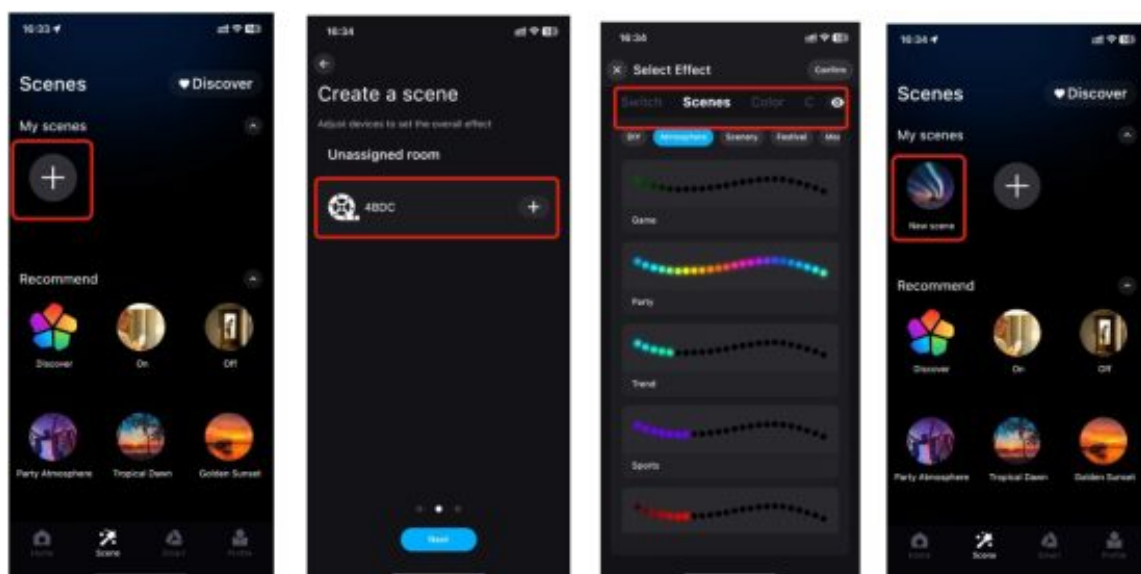
2. Enter the page “Profile” > Tap “Widget” > Add the scene to Widget. Then Add “Surplife” app to Widget



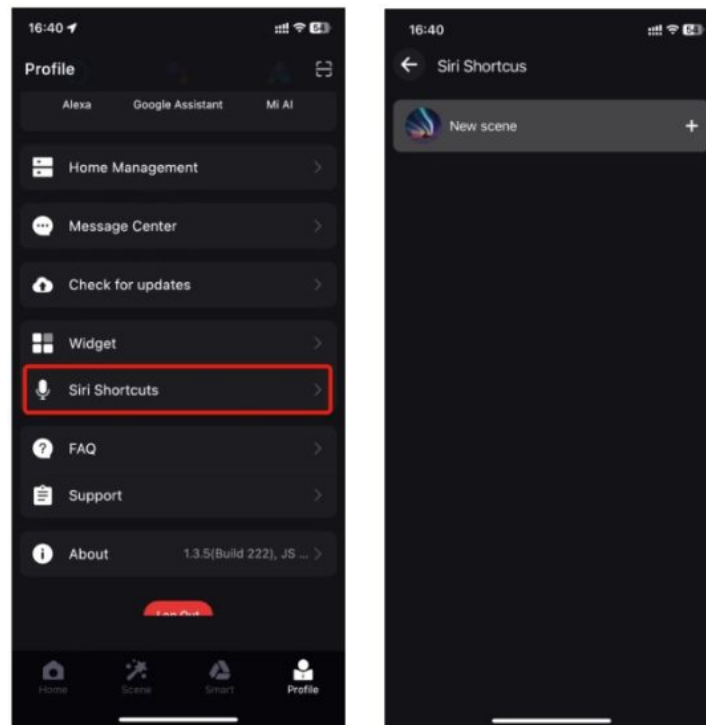
## K) Siri Shortcuts- iOS

**Note:**

1. Siri only can control the scene.
2. 10S 12.0 and above systems have their own shortcut function. 3. Pls make sure your device is “Cloud Online”.



3. Enter the page”Profile” > Tap”Siri Shortcuts” > Add the scene to here.



4. Ask Siri: Turn on the {Scene Name}

## Attentions

- Please use the product in a dry environment.
- For input voltage, please use the DC voltage within the specified range as instructed in the manual, must not connect into 220V AC directly.
- The product is requested common anode connection. The wrong connection will cause a malfunction.

## FCC Statement:

This device complies with part 15 of the FCC Rules. Operation is subject to the following two conditions:

- This device may not cause harmful interference, and
- this device must accept any interference received, including interference that may cause undesired operation.

This equipment has been tested and found to comply with the limits for a Class B digital device, pursuant to part 15 of the FCC Rules. These limits are designed to provide reasonable protection against harmful interference in a residential installation. This Equipment generates, uses and can radiate radio frequency energy and, if not installed and used in accordance with the instructions, may cause harmful interference to radio communications. However, there is no guarantee that interference will not occur in a Particular installation. If these equipment does cause harmful interference to radio or television reception, which can be determined by turning the equipment off and on, the user is encouraged to try to correct the interference by one or more of the following measures:

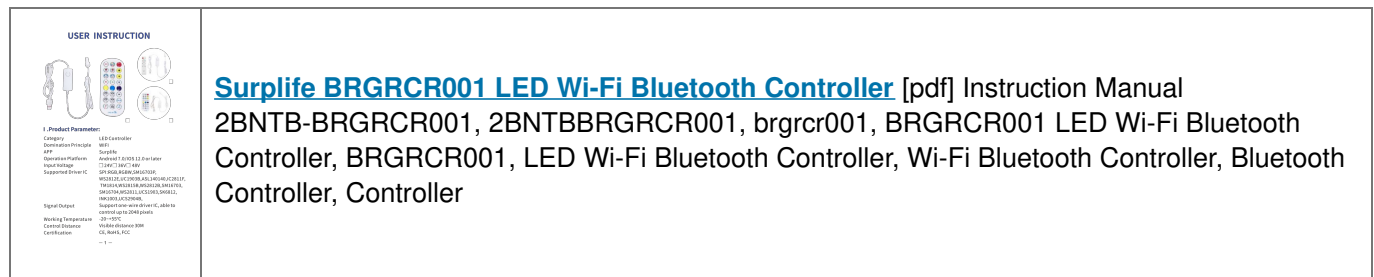
- Reorient or relocate the receiving antenna.
- Increase the separation between the equipment and receiver.
- Connect the equipment into an outlet on a circuit different from that to which the receiver is connected.
- Consult the dealer or an experienced radio/TV technician for help.

Caution: Any changes or modifications not expressly approved by the party responsible for compliance could void the user's authority to operate the equipment.

This equipment complies with FCC radiation exposure limits set forth for an uncontrolled environment.

This transmitter must not be co-located or operating in conjunction with any other antenna or transmitter.  
This equipment should be installed and operated with minimum distance 20cm between the radiator your body.

## Documents / Resources



## References

- User Manual

**Manuals+, Privacy Policy**

This website is an independent publication and is neither affiliated with nor endorsed by any of the trademark owners. The "Bluetooth®" word mark and logos are registered trademarks owned by Bluetooth SIG, Inc. The "Wi-Fi®" word mark and logos are registered trademarks owned by the Wi-Fi Alliance. Any use of these marks on this website does not imply any affiliation with or endorsement.