

  
**LSS002 PIR Motion  
Sensor With Light  
Sensor Switch**



# Surmountor LSS002 PIR Motion Sensor With Light Sensor Switch Owner's Manual

[Home](#) » [SurMountor](#) » Surmountor LSS002 PIR Motion Sensor With Light Sensor Switch Owner's Manual 

## Contents

- [1 Surmountor LSS002 PIR Motion Sensor With Light Sensor Switch](#)
- [2 Functions](#)
- [3 OVERVIEW](#)
- [4 Operations](#)
- [5 Installation Steps:](#)
- [6 Documents / Resources](#)
  - [6.1 References](#)
- [7 Related Posts](#)



**Surmountor LSS002 PIR Motion Sensor With Light Sensor Switch**

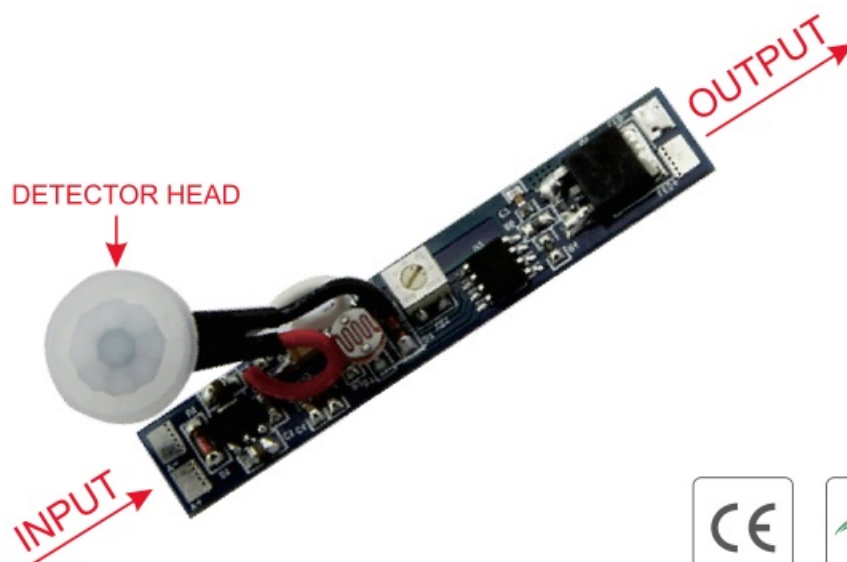


## Functions

- Automatically ON/OFF.
- Input Voltage: 12V-24V DC.
- Loading Power: 8A Max.
- Lux Range: 2~60 lux.
- Delay Time: About 40 seconds.
- Detection Range: <2 meters.
- Dimension: 57\*10mm.

V+	--- DC input positive
V-	--- DC input negative
LED+	--- Output to LED Strip positive
LED-	--- Output to LED Strip negative

## OVERVIEW

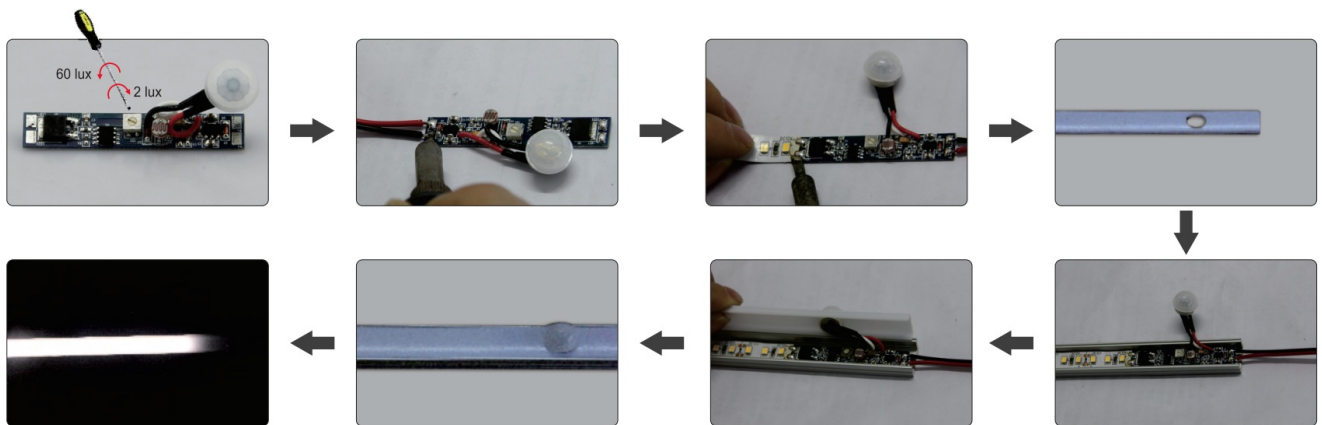


## Operations

- Motion sensor with light Sensor Switch LSS002 is to be assembled into lighting fixtures.
- It will turn off the LED light at the daytime and turn on the LED light automatically when a human moves within 2 meters at night.
- The lighting fixture equipped with LSS002 will stay on if the human body stays within detection range (2 meters) from the sensor at night and will turn off in 40 seconds after human body moves away more than 2 meters at night.
- Light sensor switch adjustable range: 2-60 lux

## Installation Steps:

- Step 1: Cut a 10.5mm hole at the fixture.
- Step 2: Put the detector head into the 10.5mm hole.
- Step 3: Connect wires to the input end and output end of the control PCB.

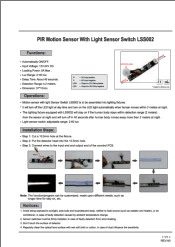


**Note:** The function/program can be customized, and made upon different needs, such as longer time for stay on, etc.

## Notices:

1. Avoid being exposed to sunlight, auto bulbs, and incandescent lamps, nor to heat sources (such as radiators and heaters), or air conditioners, in case of faulty detection caused by ambient temperature change.
2. Sensor switches must be firmly installed, in case of faulty detection from wind shaking.
3. Don't touch the surface of the detector.
4. Regularly clean the optical lens surface with a wet soft cloth or cotton, in case of dust influence the sensitivity.

## Documents / Resources

	<a href="#">Surmountor LSS002 PIR Motion Sensor With Light Sensor Switch</a> [pdf] Owner's Manual LSS002 PIR Motion Sensor With Light Sensor Switch, LSS002, PIR Motion Sensor With Light Sensor Switch, Sensor With Light Sensor Switch, Light Sensor Switch, Sensor Switch, Switch
---	---

## References

- [User Manual](#)

[Manuals+](#), [Privacy Policy](#)

This website is an independent publication and is neither affiliated with nor endorsed by any of the trademark owners. The "Bluetooth®" word mark and logos are registered trademarks owned by Bluetooth SIG, Inc. The "Wi-Fi®" word mark and logos are registered trademarks owned by the Wi-Fi Alliance. Any use of these marks on this website does not imply any affiliation with or endorsement.