



## Surmountor IR Door Hand Sensor Switch User Guide

[Home](#) » [SurMountor](#) » Surmountor IR Door Hand Sensor Switch User Guide 

### Contents

- [1 Surmountor IR Door Hand Sensor Switch](#)
- [2 Product Usage Instructions:](#)
- [3 IR Door/Hand Sensor Switch](#)
- [4 Door Mode](#)
- [5 Function descriptions](#)
- [6 Hand Mode](#)
- [7 Documents / Resources](#)
  - [7.1 References](#)
- [8 Related Posts](#)



### Surmountor IR Door Hand Sensor Switch



## Specifications

- Product Name: IR Door/Hand Sensor Switch
- Power Supply: 12-24V DC
- Input: 110V/220V AC
- Detection Range: 0.5cm to 10cm
- Features: Available with 1, 2, or 3 detectors in the sensor unit
- Mounting Options: Surface mounted or Recessed mounted

## Product Usage Instructions:

### Door Mode

- **Features:** Ideal for wardrobes with three doors or sliding doors.
- **Function:** When all three detectors detect target objects, the LED light switches on. When none of the detectors detect any target object, the LED light switches off.
- **Installation:** Ensure all detectors are covered before powering on.

### Hand Mode

**Features:** Suitable for applications requiring hand detection.

**Function:** When a hand passes over any detector within 10cm range, the LED light turns on. Passing the hand over the detector again within the range turns off the LED light.

## Mounting Options

- Surface Mounted: Install on the surface of the desired location

- Recessed Mounted: Install in a recessed manner for a more integrated look

## Frequently Asked Questions (FAQ)

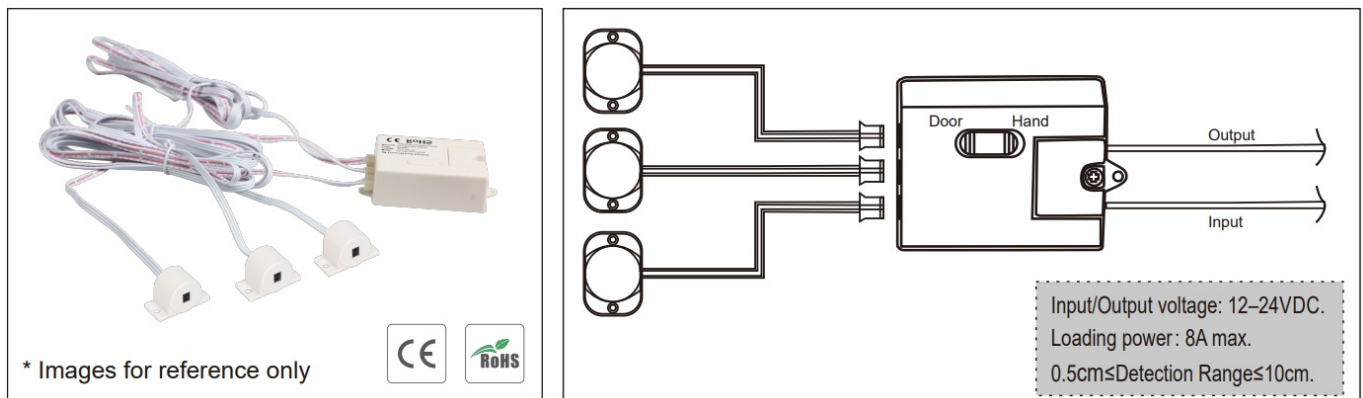
### • Q: Can I use this sensor switch for automatic lighting control?

**A:** Yes, you can utilize this sensor switch for automatic lighting control based on the detection of objects or hands within the specified range.

### • Q: What is the power supply requirement for this product?

**A:** The IR Door/Hand Sensor Switch requires a power supply of 12-24V DC and accepts input of 110V/220V AC.

## IR Door/Hand Sensor Switch



## Door Mode

### Features

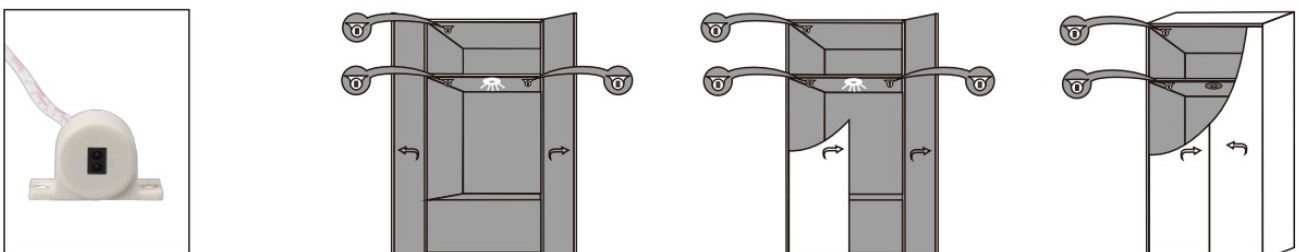
- 1, 2 or 3 detectors in the sensor unit.
- Perfect for using in wardrobes with three doors or sliding doors.

### Function descriptions

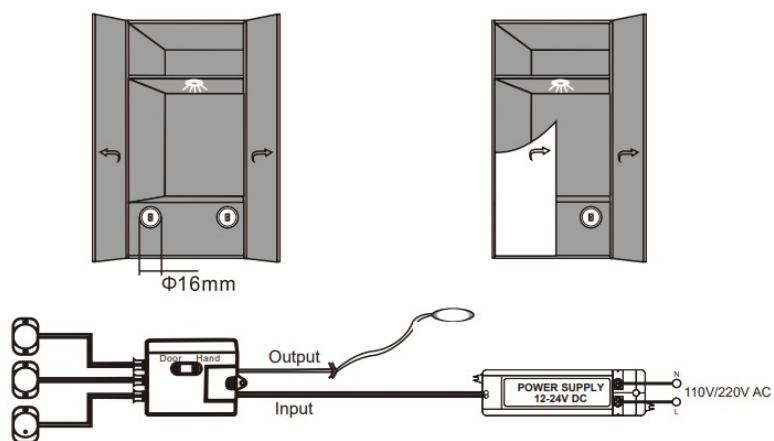
- When there are target objects in the detecting range of all of three detectors, the LED light switches on.
- When there are no target object in the detecting range of any of the detectors, the LED light switches off.

**Warning :** All detectors must be covered before switching on input power.

### Surface mounted



## Recessed Mounted



## Hand Mode

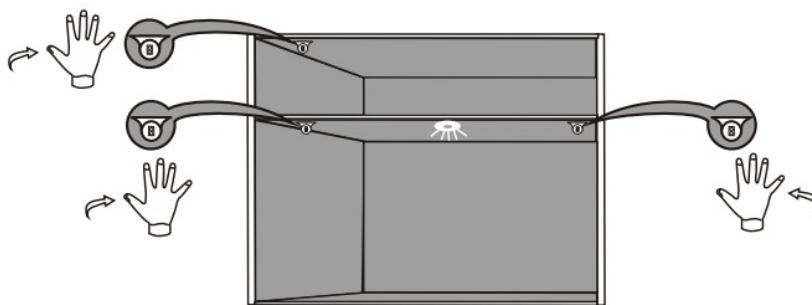
### Features

1, 2 or 3 detectors in the sensor unit.

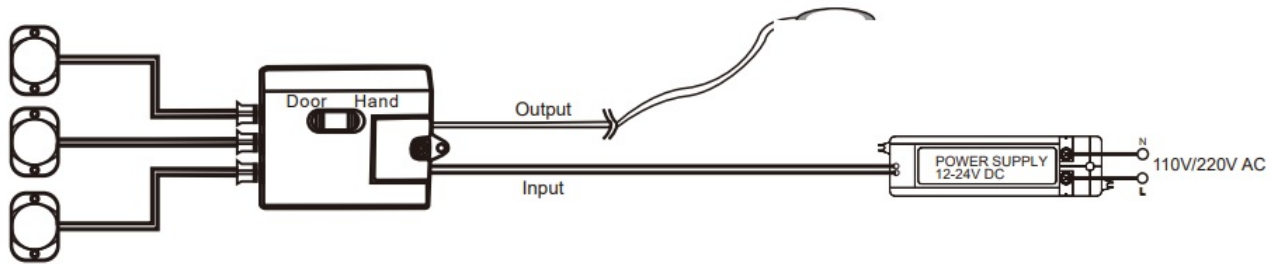
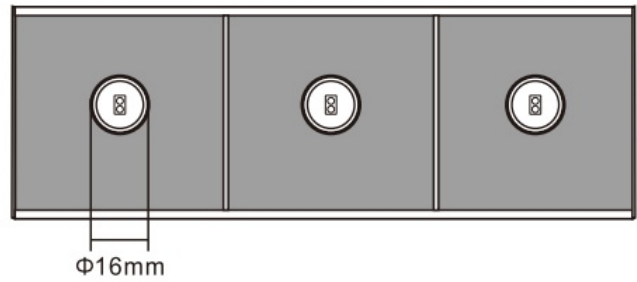
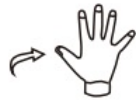
### Function descriptions

- When hand passes over any of the detectors within the detective range (less than 10cm), the LED light switch on.
- When hand passes over any of the detectors again within the detective range (less than 10cm), the LED light switches off.

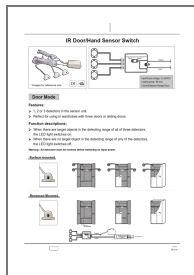
## Surface mounted



## Recessed Mounted



## Documents / Resources



[Surmountor IR Door Hand Sensor Switch](#) [pdf] User Guide  
IR Door Hand Sensor Switch, IR Door, Hand Sensor Switch, Sensor Switch, Switch

## References

- [User Manual](#)

[Manuals+](#), [Privacy Policy](#)

This website is an independent publication and is neither affiliated with nor endorsed by any of the trademark owners. The "Bluetooth®" word mark and logos are registered trademarks owned by Bluetooth SIG, Inc. The "Wi-Fi®" word mark and logos are registered trademarks owned by the Wi-Fi Alliance. Any use of these marks on this website does not imply any affiliation with or endorsement.