



Surenno SRG1010B-1280800 Series RGB Interface TFT LCD Module User Manual

[Home](#) » [Surenno](#) » Surenno SRG1010B-1280800 Series RGB Interface TFT LCD Module User Manual 

Surenno SRG1010B-1280800 Series RGB Interface TFT LCD Module



Contents

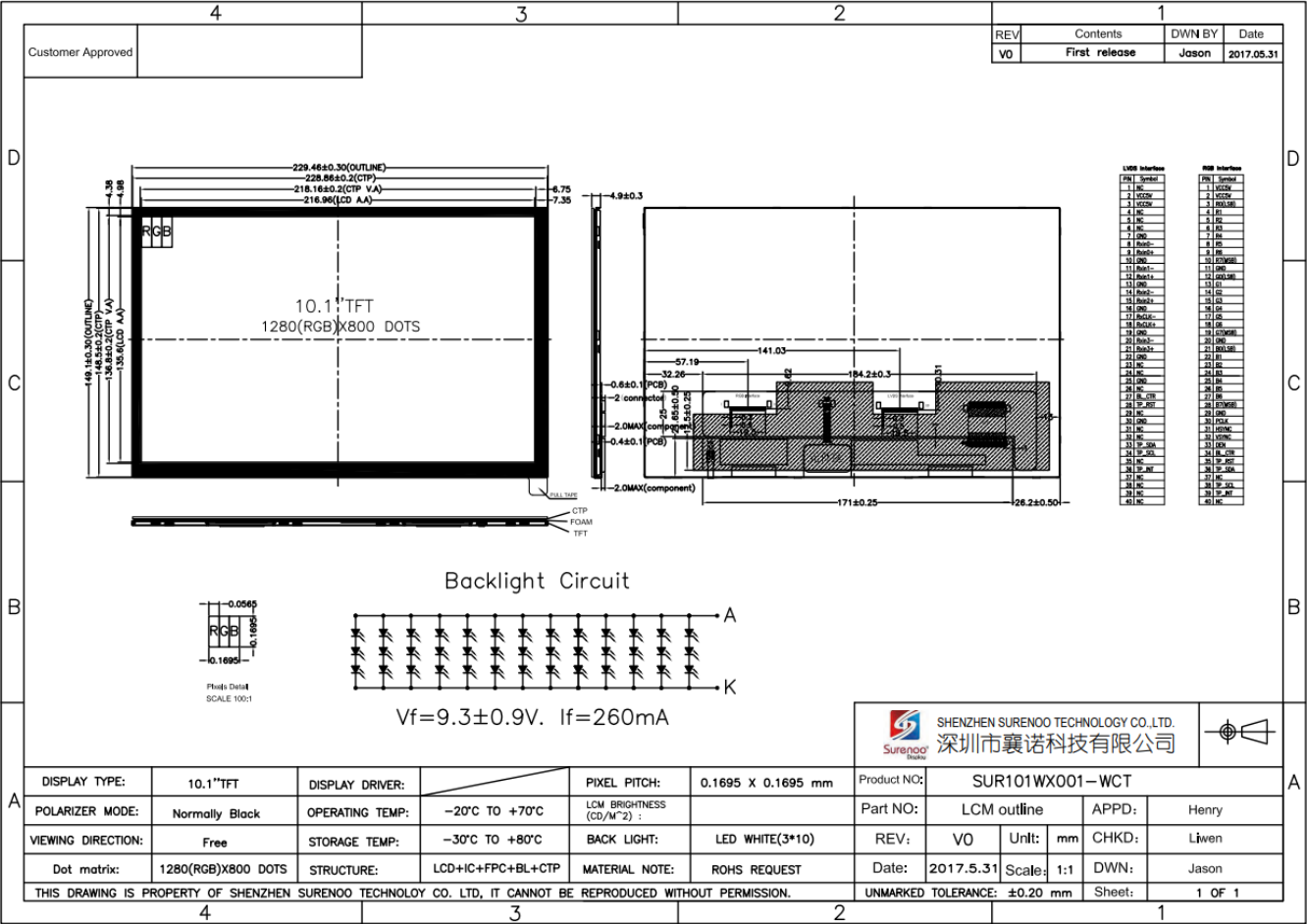
- 1 GENERAL INFORMATION
- 2 EXTERNAL DIMENSIONS
 - 2.1 SRG1010B1-1280800
 - 2.2 SRG1010B2-1280800
- 3 ABSOLUTE MAXIMUM RATINGS
- 4 ELECTRICAL CHARACTERISTICS(DC CHARACTERISTICS
- 5 BACKLIGHT CHARACTERISTICS
- 6 CTP CHARACTERISTICS
- 7 ELECTRO-OPTICAL CHARACTERISTICS
- 8 INTERFACE DESCRIPTION
- 9 INPUT TIMING
- 10 RELIABILITY TEST CONDITIONS
- 11 INSPECTION CRITERION
- 12 CUSTOMERS SUPPORT
- 13 Documents / Resources
 - 13.1 References
- 14 Related Posts

GENERAL INFORMATION

Item of general information	Contents	Unit
-----------------------------	----------	------

<i>LCD Display Size (Diagonal)</i>	<i>10.1</i>		<i>inch</i>
<i>Module Structure</i>	<i>LCD Display + CTP Touch + PCB</i>		—
<i>LCD Display Type</i>	<i>TFT/TRANSMISSIVE</i>		—
<i>LCD Display Mode</i>	<i>Normally Black</i>		—
<i>Recommended Viewing Direction</i>	<i>Free</i>		—
<i>Gray inversion Direction</i>	<i>Free</i>		—
<i>Module size (W×H×T)</i>	<i>A1: 229.46×149.10×4.90</i>		<i>mm</i>
	<i>A2: 255.00×172.60×4.60</i>		<i>mm</i>
<i>Active area (W×H)</i>	<i>216.96×135.60</i>		<i>mm</i>
<i>Number of pixels (Resolution)</i>	<i>1280RGB×800</i>		<i>pixel</i>
<i>Pixel pitch (W×H)</i>	<i>0.1695×0.1695</i>		<i>mm</i>
<i>Color Pixel Arrangement</i>	<i>RGB Stripe</i>		—
<i>Module Interface Type</i>	<i>LCD</i>	<i>RGB Interface</i>	—
	<i>CTP</i>	<i>I2C interface</i>	—
<i>Module Input voltage</i>	<i>5.0V</i>		<i>V</i>
<i>Module Power consumption</i>	<i>600(Typ.)</i>		<i>mA</i>
<i>Color Numbers</i>	<i>16.7M</i>		—
<i>Backlight Type</i>	<i>White LED</i>		—

EXTERNAL DIMENSIONS



DISPLAY TYPE:

10.1" TFT

DISPLAY DRIVER:

PIXEL PITCH:

0.1695 X 0.1695 mm

Product NO:

SUR101WX001-WCT

POLARIZER MODE:

Normally Black

OPERATING TEMP:

-20°C TO +70°C

LCM BRIGHTNESS (CD/M²):

Part NO:

LCM outline

APPD:

Henry

VIEWING DIRECTION:

Free

STORAGE TEMP:

-30°C TO +80°C

BACK LIGHT:

LED WHITE(3*10)

REV:

VO

Unit:

mm

CHKD:

Lifen

Dot matrix:

1280(RGB)X800 DOTS

STRUCTURE:

LCD+IC+FPC+BL+CTP

MATERIAL NOTE:

ROHS REQUEST

Date:

2017.5.31

Scale:

1:1

DWN:

Jason

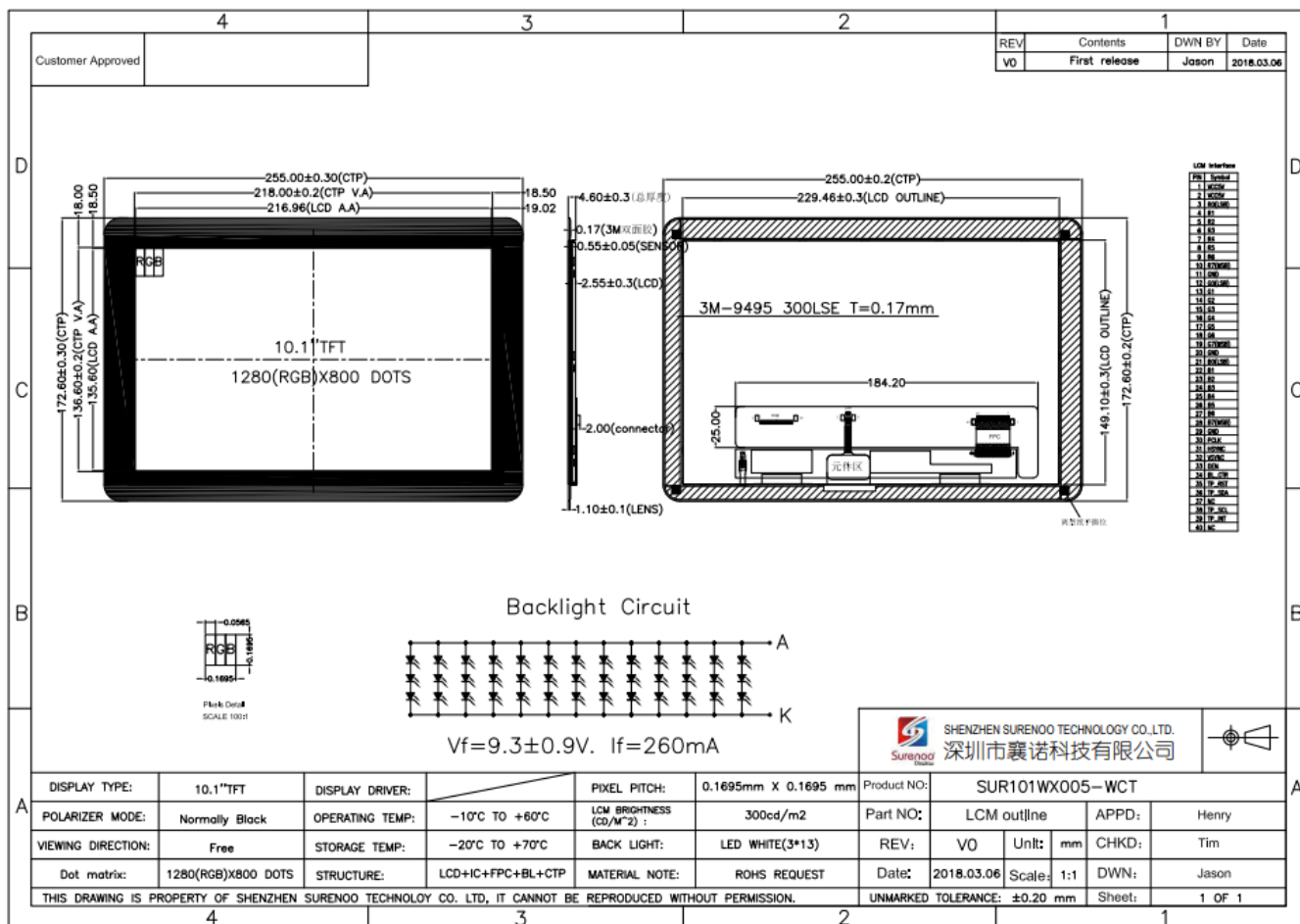
THIS DRAWING IS PROPERTY OF SHENZHEN SURENOO TECHNOLOGY CO. LTD. IT CANNOT BE REPRODUCED WITHOUT PERMISSION.

UNMARKED TOLERANCE:

±0.20 mm

Sheet:

1 OF 1



ABSOLUTE MAXIMUM RATINGS

Parameter of absolute maximum ratings	Symbol	Min	Max	Unit
Operating temperature	T_{op}	-10	60	°C
Storage temperature	T_{st}	-20	70	°C
Humidity	RH	—	90%(Max 60°C)	RH

Note: Absolute maximum ratings means the product can withstand short-term, not more than 120 hours. If the product is a long time to withstand these conditions, the life time would be shorter.

ELECTRICAL CHARACTERISTICS(DC CHARACTERISTICS)

Parameter of DC characteristics	Symbol	Min.	Typ.	Max.	Unit
<i>PCB operating voltage</i>	<i>VCC5V</i>	–	<i>5.0</i>	–	<i>V</i>
<i>LCD I/O operating voltage</i>	<i>VDD</i>	<i>2.3</i>	<i>2.5</i>	<i>2.7</i>	<i>V</i>
<i>Input voltage ‘H’ level</i>	<i>VIH</i>	<i>0.8*VDD</i>	–	<i>VDD</i>	<i>V</i>
<i>Input voltage ‘L’ level</i>	<i>VIL</i>	<i>VSS</i>	–	<i>0.2*VDD</i>	<i>V</i>
<i>Output voltage ‘H’ level</i>	<i>VOH</i>	<i>VDD-0.4</i>	–	<i>VDD</i>	<i>V</i>
<i>Output voltage ‘L’ level</i>	<i>VOL</i>	<i>VSS</i>	–	<i>VSS+0.4</i>	<i>V</i>

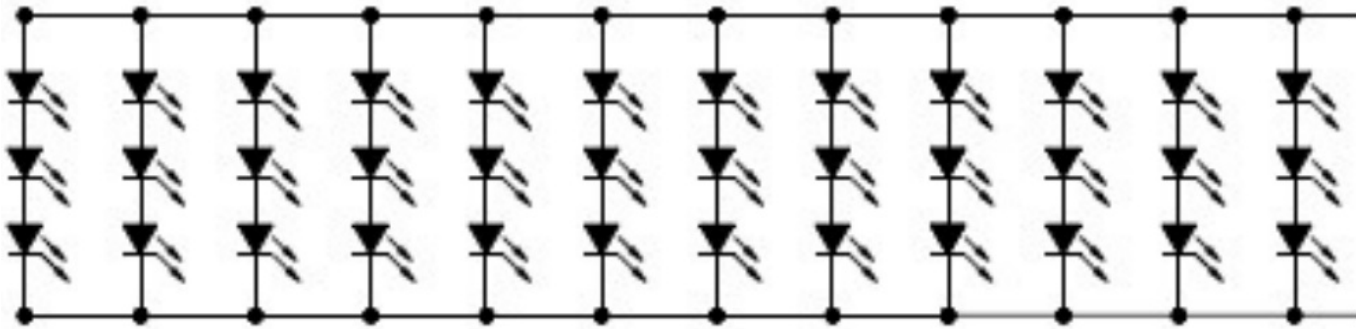
BACKLIGHT CHARACTERISTICS

Item of backlight characteristics	Symbol	Min.	Typ.	Max.	Unit	Remark
<i>Forward Voltage</i>	<i>Vf</i>	<i>8.4</i>	<i>9.3</i>	<i>10.2</i>	<i>V</i>	<i>Note1</i>
<i>Forward Current</i>	<i>If</i>	–	<i>260</i>	–	<i>mA</i>	–
<i>Number of LED</i>	–	–	<i>3*13=39</i>	–	<i>Piece</i>	–
<i>LED Connection mode</i>	<i>P/S</i>	–	<i>Serial/Parallel</i>	–	–	–
<i>Lifetime of LED</i>	–	–	<i>10000</i>	–	<i>hour</i>	<i>Note 2</i>

Note:

1. Note1: The LED Supply Voltage is defined by the number of LED at Ta=25°C and If=260mA.
2. Note 2: The LED lifetime define as the estimated time to 50% degradation of initial luminous. The LED lifetime could be decreased if operating If is lager than 200mA.
3. Backlight control via the BL_CTR pin or PWM signal.
4. Backlight circuit:

Backlight Circuit



CTP CHARACTERISTICS

<i>Item of CTP characteristics</i>	<i>Specification</i>	<i>Unit</i>	<i>Remark</i>
<i>Panel Type</i>	<i>Glass Cover + Glass Sensor</i>	—	—
<i>Resolution</i>	<i>1280 × 800</i>	<i>pixel</i>	—
<i>Surface Hardness</i>	<i>6H</i>	—	—
<i>Transparency</i>	<i>≥86%</i>	—	—
<i>Driver IC</i>	<i>GT9271</i>	—	—
<i>Interface Type</i>	<i>I2C</i>	—	—
<i>Support Points</i>	<i>10</i>	—	—
<i>Sampling Rate</i>	<i>20~100</i>	<i>Hz</i>	—
<i>Supply voltage</i>	<i>3.3</i>	<i>V</i>	—

ELECTRO-OPTICAL CHARACTERISTICS

Item of electro-optical characteristics		Symbol	Condition	Min.	Typ.	Max.	Unit	Remark	Note
Response time		Tr+Tf	$\theta=0$ $\phi=0$ Ta=25°C	—	25	50	ms	FIG 1.	4
Contrast Ratio		CR		—	600	—	—	FIG 2.	1
Luminance uniformity		ϕ_{WHITE}		—	80	—	%	FIG 2.	3
Surface Luminance		Lv		—	300	—	cd/m2	FIG 2.	2
CIE (x, y) chromaticity	White	White x	$\theta=0$ $\phi=0$ Ta=25°C	0.27	0.31	0.35	—	FIG 2.	5
		White y		0.28	0.32	0.36			
Viewing angle range	$\phi=90(12 \text{ o'clock})$		$CR \geq 10$	75	85	—	deg	FIG 3.	6
	$\phi=270(6 \text{ o'clock})$			75	85	—	deg		
	$\phi=0(3 \text{ o'clock})$			75	85	—	deg		
	$\phi=180(9 \text{ o'clock})$			75	85	—	deg		
NTSC ratio		—	—	—	50	—	%	—	—

Note 1. Contrast Ratio(CR) is defined mathematically by the following formula. For more information see FIG 2.:

$$\text{Contrast Ratio(CR)} = \frac{\text{Average Surface Luminance with all white pixels(P1,P2, P3, P4, P5, P6,P7, P8, P9)}}{\text{Average Surface Luminance with all black pixels(P1,P2, P3, P4, P5, P6,P7, P8, P9)}}$$

Note 2. Surface luminance is the LCD surface from the surface with all pixels displaying white. For more information see FIG 2.

L_v =Average Surface Luminance with all white pixels (P1,P2,P 3,P4, P5,P6,P7,P8,P9)

Note 3. The uniformity in surface luminance S_{WHITE} is determined by measuring luminance at each test position 1 through 9, and then dividing the maximum luminance of 9points luminance by minimum luminance of 9 points luminance. For more information see FIG 2.

$$\delta_{\text{WHITE}} = \frac{\text{Minimum Surface Luminance with all white pixels (P1, P2, P3, P4, P5, P6, P7, P8, P9)}}{\text{Maximum Surface Luminance with all white pixels (P1, P2, P3, P4, P5, P6, P7, P8, P9)}}$$

Note 4. The response time is defined as the LCD optical switching time interval between “White” state and “Black” state. Rise time (TON) is the time between photo detector output intensity changed from 90% to 10%. And fall time (TOFF) is the time between photo detector output intensity changed from 10% to 90%. For more information see FIG 1.

Note 5. CIE (x, y) chromaticity ,The x,y value is determined by screen active area position 5. For more information see FIG 2.

Note 6. Viewing angle is the angle at which the contrast ratio is greater than a specific value. For TFT module, the specific value of contrast ratio is 10. The angles are determined for the horizontal or x axis and the vertical or y axis with respect to the z axis which is normal to the LCD surface. For more information see FIG 3.

Note 7. For Viewing angle and response time testing, the testing data is base on Autronic-Melchers's ConoScope. Series Instruments. For contrast ratio, Surface Luminance, Luminance uniformity and CIE the testing data is base on BM-7 photo detector. Note 8. For TN type TFT transmissive module, Gray scale reverse occurs in the direction of panel viewing angle.

FIG.1. The definition of Response Time

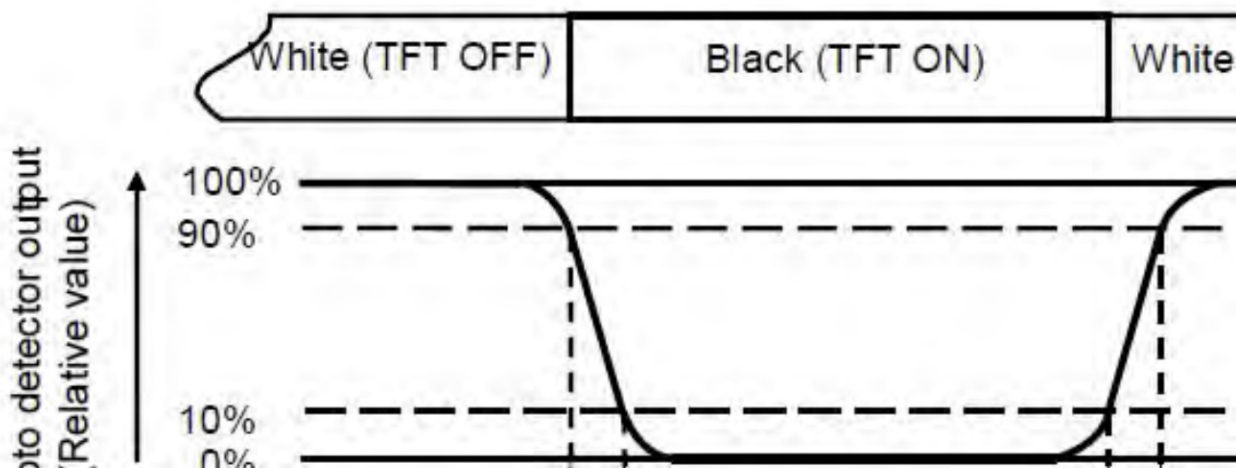


FIG.2. Measuring method for Contrast ratio, surface luminance, Luminance uniformity,

CIE (x , y) chromaticity

A : H/6 ;

B : V/6 ;

H,V : Active Area(AA) size

Measurement instrument: BM-7; Light spot size=5mm, 350mm distance from the LCD surface to detector lens.

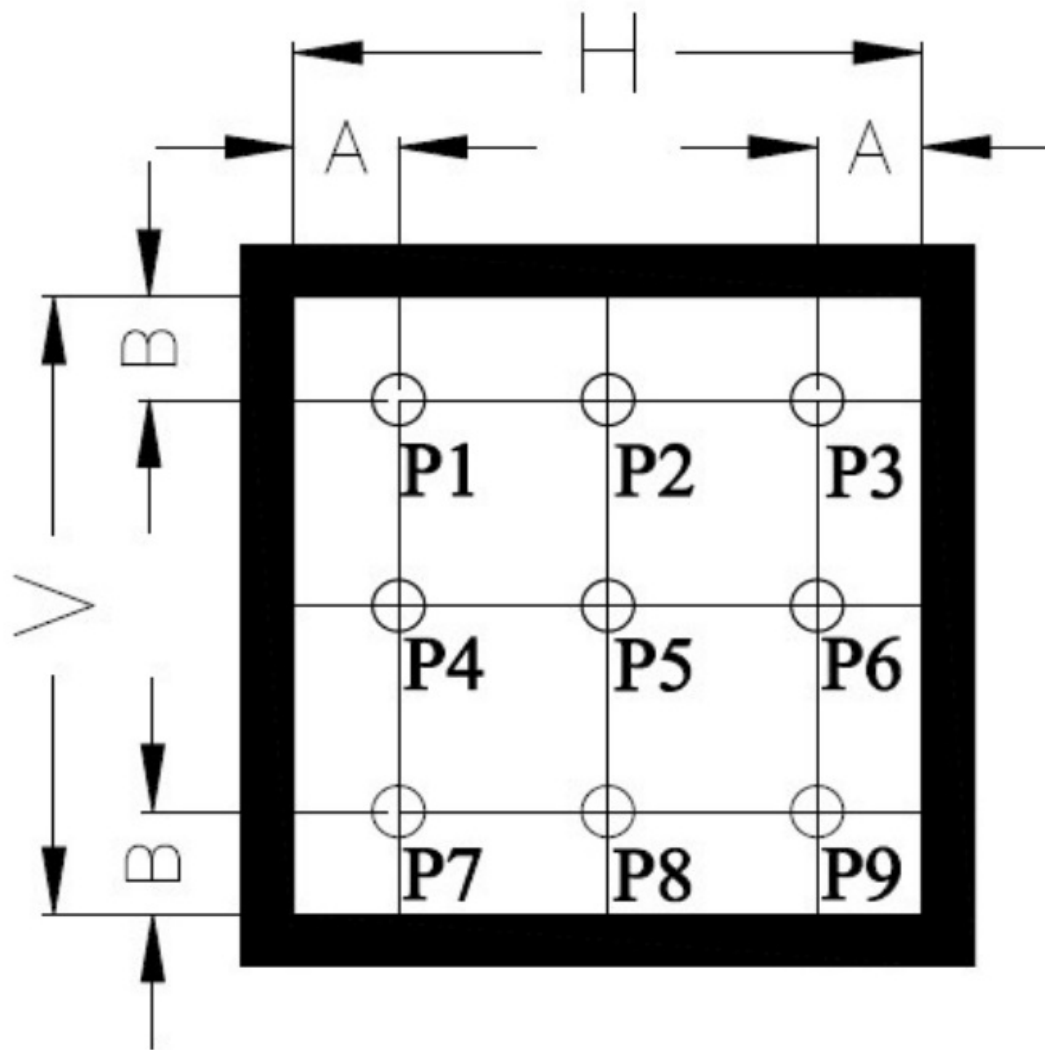
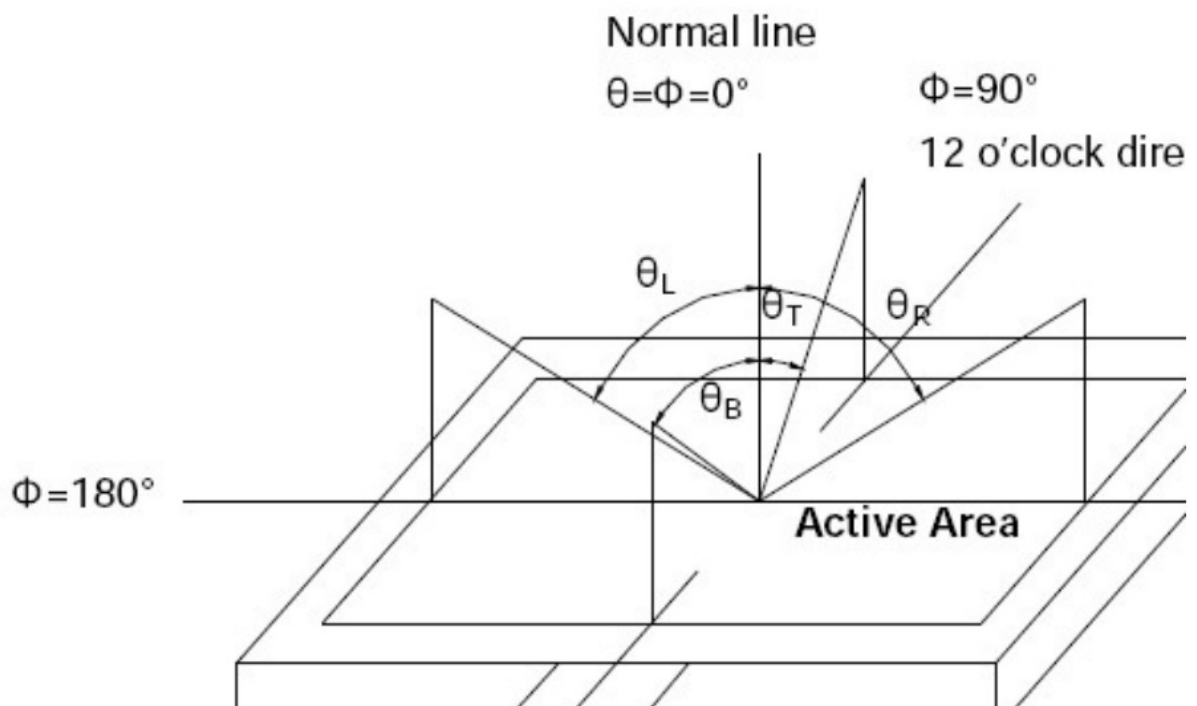


FIG.3. The definition of viewing angle



INTERFACE DESCRIPTION

NO.	Symbol	I/O	DESCRIPTION
1~2	VCC5V	P	Module Power supply (5V Typ.)
3~10	R0~R7	I	8bit digital Red data input(R0:LSB; R7:MSB)
11	GND	P	Power ground
12~19	G0~G7	I	8bit digital Green data input(G0:LSB; G7:MSB)
20	GND	P	Power ground
21~28	B0~B7	I	8bit digital Blue data input(B0:LSB; B7:MSB)
29	GND	P	Power ground
30	DCLK	I	Clock signal.
31	HSYNC	I	Horizontal Sync input.
32	VSYNC	I	Vertical Sync input.
33	DEN	I	Data input Enable.
34	BL_CTR	I	Backlight control pin
35	TP_RST	I	CTP external reset signal, Low is active
36	TP_SDA	I/O	CTP I2C data input and output
37	NC	—	No connection
38	TP_SCL	I	CTP I2C clock input

39	TP_INT	I/O	CTP External interrupt to the host
40	NC	—	No connection

Application Note:

For RGB interface input:

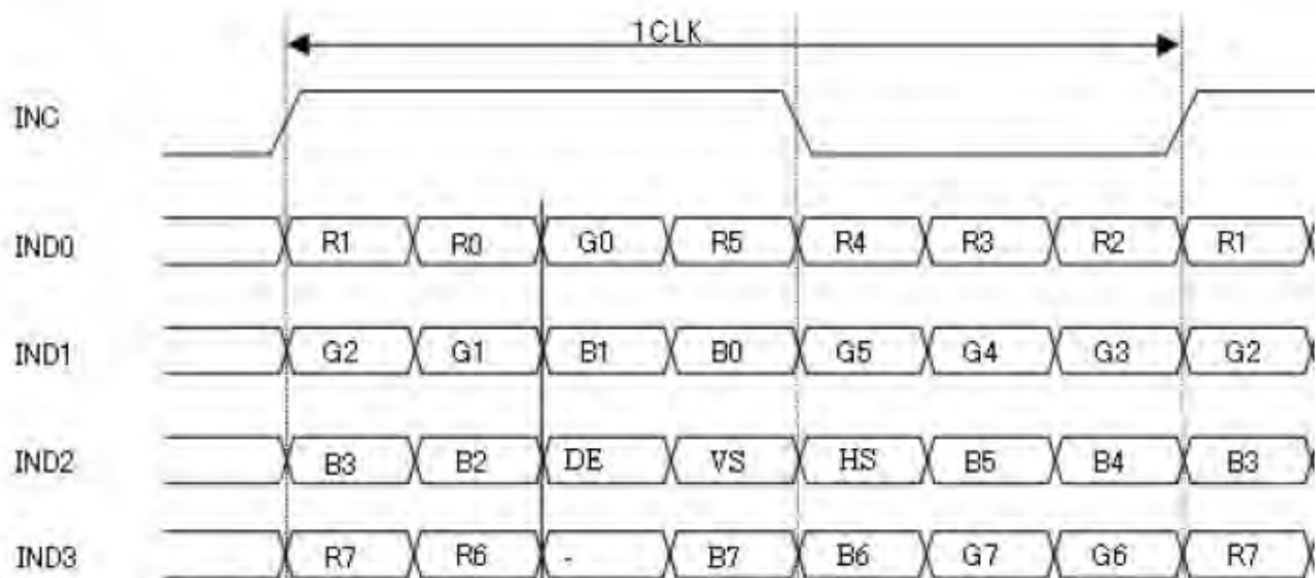
1. For RGB565 Input Format: R3~R7, G2~G7, B3~B7 be used.
2. For RGB666 Input Format: R2~R7, G2~G7, B2~B7 be used

INPUT TIMING

RGB Input Timing Table

Parameter	Symbol	Value			Unit
		Min.	Typ.	Max.	
<i>DCLK frequency@ Frame rate=60Hz</i>	<i>DCLK</i>	<i>68.9</i>	<i>71.1</i>	<i>73.4</i>	<i>MHz</i>
<i>Horizontal display area</i>	<i>thd</i>	<i>1280</i>			<i>DCLK</i>
<i>1 Horizontal Line</i>	<i>th</i>	<i>1340</i>	<i>1440</i>	<i>1470</i>	<i>DCLK</i>
<i>HSYNC pulse width</i>	<i>thpw</i>	–	<i>10</i>	–	<i>DCLK</i>
<i>HSYNC Back Porch(Blanking)</i>	<i>thb</i>	–	<i>80</i>	–	<i>DCLK</i>
<i>HSYNC Front Porch</i>	<i>thfp</i>	–	<i>70</i>	–	<i>DCLK</i>
<i>Vertical display area</i>	<i>tvd</i>	<i>800</i>			<i>H</i>
<i>VSYNC period time</i>	<i>tv</i>	<i>815</i>	<i>823</i>	<i>833</i>	<i>H</i>
<i>VSYNC pulse width</i>	<i>tpw</i>	–	<i>3</i>	–	<i>H</i>
<i>VSYNC Back Porch(Blanking)</i>	<i>tvb</i>	–	<i>10</i>	–	<i>H</i>
<i>VSYNC Front Porch</i>	<i>tvfp</i>	–	<i>10</i>	–	<i>H</i>

LVDS Data Input Format



RELIABILITY TEST CONDITIONS

No.	Test Item	Test Condition
1	High Temperature Storage	70°C/120 hours
2	Low Temperature Storage	-20°C/120 hours
3	High Temperature Operating	60°C/120 hours
4	Low Temperature Operating	-10°C/120 hours
5	Temperature Cycle Storage	-10°C (30min.)~25(5min.)~60°C (30min.)×10 cycles

A Inspection after test:

Inspection after 2~4 hours storage at room temperature, the sample shall be free from defects:

- Ø Air bubble in the LCD;
- Seal Leak;
- Non-display;
- Missing segments;
- Glass crack;
- Current is twice higher than initial value.

B Remark:

- The test samples should be applied to only one test item.
- Sample size for each test item is 5~10pcs.
- Failure Judgment Criterion: Basic Specification, Electrical Characteristic, Mechanical Characteristic, Optical Characteristic.

INSPECTION CRITERION

This specification is made to be used as the standard of acceptance/rejection criteria for TFT-LCD/IPS TFT-LCD module product, and this specification is applicable only in the case that the size of module equal to or exceed than 4.3 inch.

Sample plan

Sampling plan according to GB/T2828.1-2003/ISO 2859-1 1999 and ANSI/ASQC

Z1.4-1993,normal level 2 and based on:

Major defect: AQL 0.65

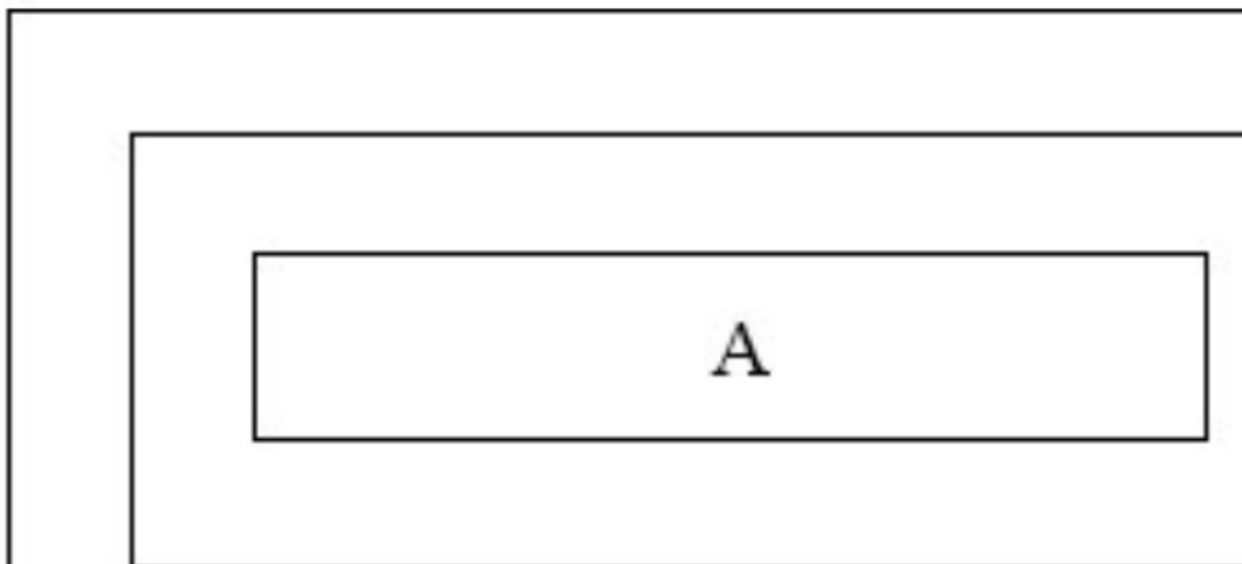
Minor defect: AQL 1.5

Inspection condition

Viewing distance for cosmetic inspection is about 30cm with bare eyes, and under an environment of 20~40W light intensity, all directions for inspecting the sample should be within 45° against perpendicular line. (Normal temperature 20~25°C and normal humidity 60 ±15%RH)

Definition of Inspection Item.

A, Definition of inspection zone in LCD.



Zone A: character/Digit area

Zone B: viewing area except Zone A (Zone A + Zone B=minimum Viewing area)

Zone C: Outside viewing area (invisible area after assembly in customer's product)

Fig.1 Inspection zones in an LCD

Note: As a general rule, visual defects in Zone C are permissible, when it is no trouble for quality and assembly of customer's product.

B, Definition of some visual defect

Bright dot	<i>Because of losing all or part function, bad pixel dots appear bright and the size is more than 50% of one dot in which LCD panel is displaying under black pattern.</i>
Dark dot	<i>Dots appear dark and unchanged in size in which LCD panel is displaying under pure red, green, blue picture, or pure whiter picture.</i>

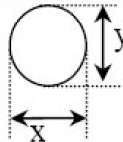
Major Defect

Item No.	Items to be inspected	Inspection standard	Classification of defects
1	Functional defects	1. No display 2. Display abnormally 3. Missing vertical, horizontal segment 4. Short circuit 5. Excess power consumption 6. Backlight no lighting, flickering and abnormal lighting	major
2	Missing	Missing component	
3	Outline dimension	Overall outline dimension beyond the drawing is not allowed	

Minor Defect

Item No.	Items to be inspected	Inspection standard	Classification of defects
-----------------	------------------------------	----------------------------	----------------------------------

1	Bright dot /dark dot defect	<table><tr><th rowspan="2">Zone</th><th colspan="4">A+B</th></tr><tr><th>4.3 7"</th><th>7 10.1"</th><th>10.1"</th><th>C</th></tr><tr><td>Bright pixel dot</td><td>1</td><td>2</td><td>3</td><td rowspan="5">Acceptable</td></tr><tr><td>Dark pixel dot</td><td>4</td><td>4</td><td>4</td></tr><tr><td>2bright dots adjacent</td><td>0</td><td>0</td><td>0</td></tr><tr><td>2dark dots adjacent</td><td>0</td><td>0</td><td>0</td></tr><tr><td>Total bright and dark dots</td><td>5</td><td>6</td><td>7</td></tr></table>	Zone	A+B				4.3 7"	7 10.1"	10.1"	C	Bright pixel dot	1	2	3	Acceptable	Dark pixel dot	4	4	4	2bright dots adjacent	0	0	0	2dark dots adjacent	0	0	0	Total bright and dark dots	5	6	7	Minor
		Zone		A+B																													
			4.3 7"	7 10.1"	10.1"	C																											
		Bright pixel dot	1	2	3	Acceptable																											
		Dark pixel dot	4	4	4																												
		2bright dots adjacent	0	0	0																												
		2dark dots adjacent	0	0	0																												
		Total bright and dark dots	5	6	7																												
<p>Note: Minimum distance between defective dots is more than 5mm; Pixel dots' function is normal, but bright dots caused by foreign material and other reasons are judged by the dot defect of 5.2.</p>																																	

2	<p>Dot defect</p>  <p>$\Phi=(x+y)/2$</p>	<table><tr><th rowspan="3">Zone Size (mm)</th><th colspan="4">Acceptable Qty</th></tr><tr><th colspan="3">A+B</th><th rowspan="2">C</th></tr><tr><th>A+B</th><th>7 10.1"</th><th>10.1"</th></tr><tr><td>$\Phi\leq0.2$</td><td>Acceptable</td><td>Acceptable</td><td>Acceptable</td><td rowspan="3">Acceptable</td></tr><tr><td>$0.2\ \Phi\leq0.5$</td><td>4</td><td>5</td><td>6</td></tr><tr><td>$\Phi\ 0.5$</td><td>0</td><td>0</td><td>0</td></tr></table> <p>Note:</p> <p>1. Minimum distance between defective dots is more than 5 m m;</p> <p>2. The quantity of defect is zero in operating condition.</p>	Zone Size (mm)	Acceptable Qty				A+B			C	A+B	7 10.1"	10.1"	$\Phi\leq0.2$	Acceptable	Acceptable	Acceptable	Acceptable	$0.2\ \Phi\leq0.5$	4	5	6	$\Phi\ 0.5$	0	0	0	Minor					
Zone Size (mm)	Acceptable Qty																																
	A+B			C																													
	A+B	7 10.1"	10.1"																														
$\Phi\leq0.2$	Acceptable	Acceptable	Acceptable	Acceptable																													
$0.2\ \Phi\leq0.5$	4	5	6																														
$\Phi\ 0.5$	0	0	0																														
3	Linear defect	<table><tr><th colspan="2" rowspan="2">Zone Size (mm)</th><th colspan="3">Acceptable Qty</th></tr><tr><th colspan="3">A+B</th><th rowspan="2">C</th></tr><tr><th>Length</th><th>Width</th><th>4.3" 7"</th><th>7 10.1"</th><th>10.1"</th></tr><tr><td>Ignore</td><td>$W\leq0.05$</td><td>Acceptable</td><td>Acceptable</td><td>Acceptable</td><td rowspan="3">Acceptable</td></tr><tr><td>$L\leq5.0$</td><td>$0.05\ W\leq0.1$</td><td>4</td><td>5</td><td>6</td></tr><tr><td>$L\ 5.0$</td><td>$W\ 0.1$</td><td>0</td><td>0</td><td>0</td></tr></table>	Zone Size (mm)		Acceptable Qty			A+B			C	Length	Width	4.3" 7"	7 10.1"	10.1"	Ignore	$W\leq0.05$	Acceptable	Acceptable	Acceptable	Acceptable	$L\leq5.0$	$0.05\ W\leq0.1$	4	5	6	$L\ 5.0$	$W\ 0.1$	0	0	0	Minor
Zone Size (mm)		Acceptable Qty																															
		A+B			C																												
Length	Width	4.3" 7"	7 10.1"	10.1"																													
Ignore	$W\leq0.05$	Acceptable	Acceptable	Acceptable	Acceptable																												
$L\leq5.0$	$0.05\ W\leq0.1$	4	5	6																													
$L\ 5.0$	$W\ 0.1$	0	0	0																													
		<p>1. Polarizer Position</p> <p>(i) Shifting in position should not exceed the glass outline dimension.</p> <p>(ii) Incomplete covering of the viewing area due to shifting is not allowed.</p> <p>2. Dirt on polarizer</p> <p>Dirt which can be wiped easily should be acceptable.</p>																															

3. Polarizer Dent & Air bubble

Zone Size(mm)	Acceptable Qty			
	A+B			C
	4.3" 7"	7 10.1"	10.1"	
$\Phi \leq 0.2$	Acceptable	Acceptable	Acceptable	Acceptable
$0.2 \Phi \leq 0.5$	4	5	6	
$\Phi 0.5$	0	0	0	

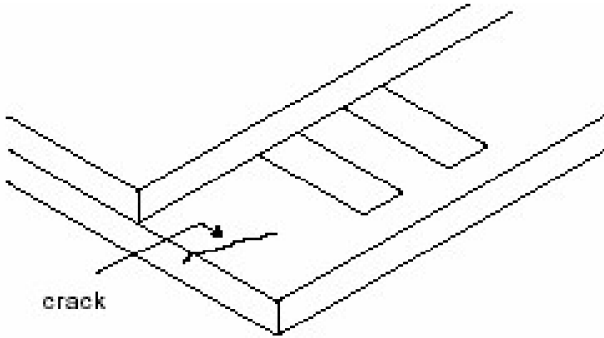
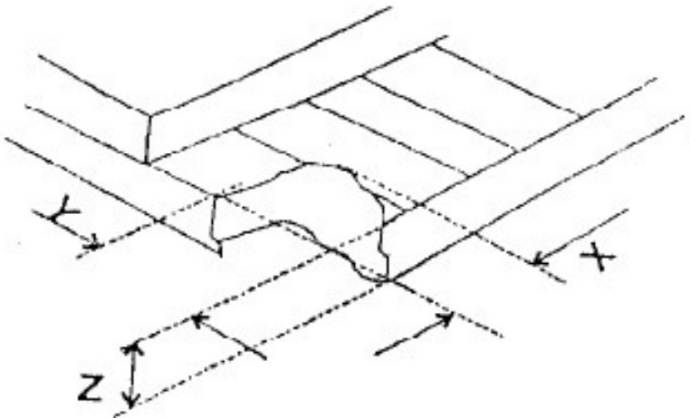
4. Polarizer scratch

(i) If the polarizer scratch can be seen after cover assembling or in the operating condition, judge by the linear defect of 5.3.

(ii) If the polarizer scratch can be seen only in non-operating condition or some special angle, judge by the following:

Minor

Zone Size(mm)		Acceptable Qty			
		A+B			C
	Width	4.3" 7"	7 10.1"	10.1"	Acceptable
Length Ignore	$W \leq 0.05$	Acceptable	Acceptable	Acceptable	
$L \leq 5.0$ $L > 5.0$	$0.05 < W \leq 0.1$	4	5	6	
	$W > 0.1$	0	0	0	

5	MURA	Using 3% ND filter, it's NG if it can be seen in R,G,B picture	Minor						
	White/Black dot MURA	Visible under ND3% $D \leq 0.15\text{mm}$, Acceptable $0.15\text{mm} < D \leq 0.5\text{mm}$, $N \leq 4$ $D > 0.5\text{mm}$, Not allowable.							
6	Glass defect	<p>(i) Crack Cracks are not allowed.</p> 	Minor						
		<p>(ii) TFT chips on corner</p>  <table border="1"> <thead> <tr> <th>X</th><th>Y</th><th>Z</th><th>Acceptable</th></tr> </thead> <tbody> <tr> <td>≤ 3.0</td><td>≤ 3.0</td><td>Not more than the thickness of glass</td><td>$N \leq 3$</td></tr> </tbody> </table> <p>Chips on the corner of terminal shall not be allowed to extend into the ITO pad or expose perimeter seal.</p>	X	Y	Z	Acceptable	≤ 3.0	≤ 3.0	Not more than the thickness of glass
X	Y	Z	Acceptable						
≤ 3.0	≤ 3.0	Not more than the thickness of glass	$N \leq 3$						

(iii) Usual surface crack

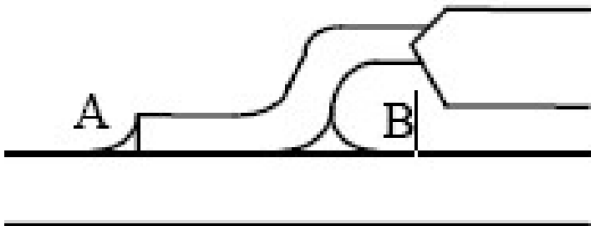
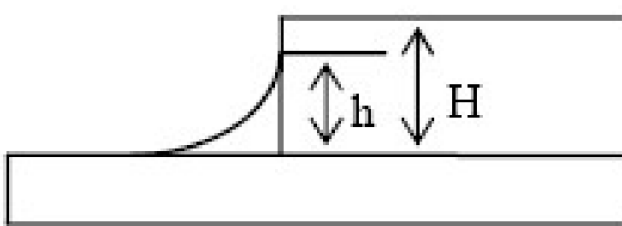
Minor

X	Y	Z	Acceptable
≤ 1.5	≤ 1.5	Not more than the thickness of glass	≤ 1.5

It is only applicable to the upper glass of LCD.

Module Cosmetic Criteria

Item No	Items to be inspected	Inspection Standard	Classification of defects
1	<i>Difference in Spec.</i>	<i>Not allowable</i>	<i>Major</i>
2	<i>Pattern peeling</i>	<i>No substrate pattern peeling and floating</i>	<i>Major</i>
3	<i>Soldering defects</i>	<i>No soldering missing</i>	<i>Major</i>
		<i>No soldering bridge</i>	<i>Major</i>
		<i>No cold soldering</i>	<i>Minor</i>
4	<i>Resist flaw on PCB</i>	<i>Visible copper foil (Φ0.5 mm or more) on substrate pattern is not allowed</i>	<i>Minor</i>
5	<i>FPC gold finger</i>	<i>No dirt, breaking, oxidation lead to black</i>	<i>Major</i>

6	Backlight plastic frame	No deformation, crack, breaking, backlight positioning column breaking, obvious nick.	Minor
7	Marking printing effect	No dark marking, incomplete, deformation lead to unable to judge	Minor
8	Accretion of metallic Foreign matter	No accretion of metallic foreign matter (Not exceed $\Phi 0.2$ mm)	Minor
9	Stain	No stain to spoil cosmetic badly	Minor
10	Plate discoloring's	No plate fading, rusting and discoloring	Minor
11	1. Lead parts	a. Soldering side of PCB Solder to form a 'Filet' all around the lead. Solder should not hide the lead form perfectly.	Minor
		b. Components side(In case of 'Through Hole PCB') Solder to reach the Components side of PCB.	Minor
	2. Flat packages	Either 'Toe'(A) or 'Seal'(B) of the lead to be covered by "Filet". Lead form to be assume over Solder. 	Minor
	3. Chips	$(3/2) H \geq h \geq (1/2) H$ 	Minor
	4. Solder ball/Solder splash	a. The spacing between solder ball and the conductor or solder pad $h \geq 0.13$ mm. The diameter of solder ball $d \leq 0.15$ mm.	Minor
		b. The quantity of solder balls or solder splashes isn't beyond 5 in 600 mm ² .	Minor
		c. Solder balls/Solder splashes do not violate minimum electrical clearance.	Major

Business Card



WhatsApp



LINE



WeChat



Shenzhen Surenoo Technology Co., Ltd.

www.surenoo.com


Skype: Surenoo365



www.surenoo.com

Surenoo[®]
Display

Documents / Resources

	<p>Surenoo SRG1010B-1280800 Series RGB Interface TFT LCD Module [pdf] User Manual SRG1010B-1280800 Series RGB Interface TFT LCD Module, SRG1010B-1280800 Series, RG B Interface TFT LCD Module, Interface TFT LCD Module, TFT LCD Module, LCD Module</p>
---	--

References

- [Surenoo Tech: Professional LCD Module Supplier Since 2005](#)