



SURAIELEC UBTW01B Smart Wi-Fi Box Timer Switch User Manual

[Home](#) » [SURAIELEC](#) » SURAIELEC UBTW01B Smart Wi-Fi Box Timer Switch User Manual 

Contents

- [1 SURAIELEC UBTW01B Smart Wi-Fi Box Timer Switch](#)
- [2 Safety Section](#)
- [3 Specifications](#)
- [4 Product Illustration](#)
- [5 Installation](#)
 - [5.1 Connecting the Wires](#)
- [6 Smart Life APP Setup](#)
- [7 Turning Devices On/Off](#)
 - [7.1 Timer Function](#)
- [8 Work with Alexa](#)
- [9 Troubleshooting](#)
- [10 One Year Limited Warranty](#)
- [11 Documents / Resources](#)
- [12 Related Posts](#)

SURAIELEC

SURAIELEC UBTW01B Smart Wi-Fi Box Timer Switch



Safety Section

WARNING

Risk of Fire or Electrical Shock

- This smart box should be installed by a licensed electrician. Turn power off at main panel before servicing this switch or the equipment it controls.
- Disconnect power at the circuit breaker(s) or disconnect switch(es) before installing or servicing.
- Installation and/or wiring must be in accordance with national and local electrical code requirements.
- This enclosure does not provide grounding between conduit connections. When metallic conduit is used, you must also install grounding type bushings and jumper wire.
- Use #14- #8 AWG wires, rated at least 75°C (167°F)-COPPER conductors ONLY.
- Make sure there is no wire insulation under the terminal plate on the timer switch connector. Firmly tighten terminal screws.
- Do not remove the insulator that is covering terminals.
- KEEP THE DOOR CLOSED AT ALL TIMES when not servicing.
- Installation, Operating and Safety Instructions – Instructions for installation and use of this product are provided by the manufacturer. “Make sure to use this product together with 40A circuit breaker in the upstream” stated in the manual

Specifications

Input

120- 240/277VAC, 60Hz Detects voltage automatically (NO DIP SWITCH SETTING REQUIRED)

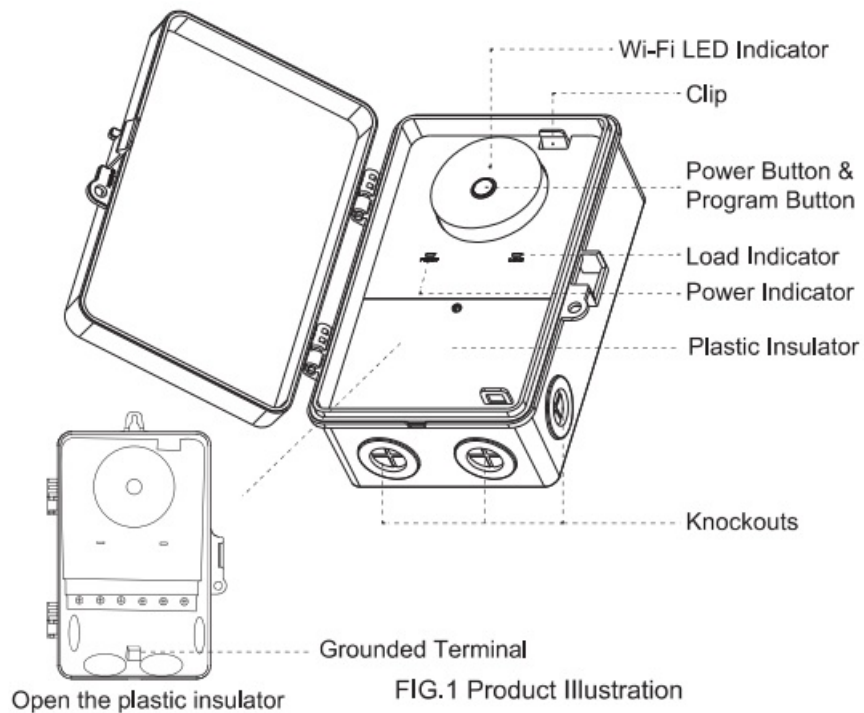
Contact Ratings

- 40A Resistive 120 to 277 VAC;
- 30A General Purpose 120 to 277 VAC;
- 20A Resistive, 30VDC;
- 1 HP, 120 VAC;
- 2HP, 240VAC;
- 20A Ballasted load 120 to 277 VAC;
- 15A Tungsten, 120 VAC;
- 5A Tungsten, 250VAC;
- 800VA, Pilot Duty, 120VAC;
- 720VA, Pilot Duty, 240 VAC;
- TV-5, 120VAC

System

- Wireless Type: 2.4GHz Only IEEE 802.11 b/g/n
- Wi-Fi Range: 80Ft (Free Area)
- APP: Smart life
- IOS: 8.0 or higher
- Android: 4.1 or higher
- Terminal range- #14-#8AWG
- Operating temperature: 40°F to 149°F

Product Illustration



Light Chart

Name	Color	Status	Status
Power Indicator	Red	Solid	Input normal
		No Light	Input abnormal
Load Indicator	Blue	Solid	Power is on
		No Light	Power is off
Wi-Fi LED Indicator	Blue	Blinks rapidly	Resetting/Enter into network configuration
		Blinks slowly until off	Configuration is success

Installation

Installation

1. Choose the knockouts (five 1/2" to 3/4" combination knockouts available)

- **For 1/2" Knockouts:** Carefully cut off the inner ring of the rubber plug with a knife (FIG.2).
- **For 3/4" Knockouts:** Please remove the entire rubber plug (FIG.3).

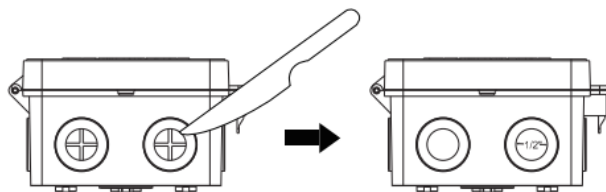


FIG.2 1/2" knockout

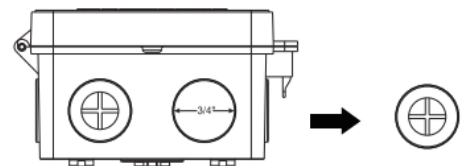


FIG.3 3/4" knockout

2. Mounting the Smart Box Timer

- Hold the box in place and use the three holes (FIG.4) to mark position on the mounting surface.
- Mount the box with the screws

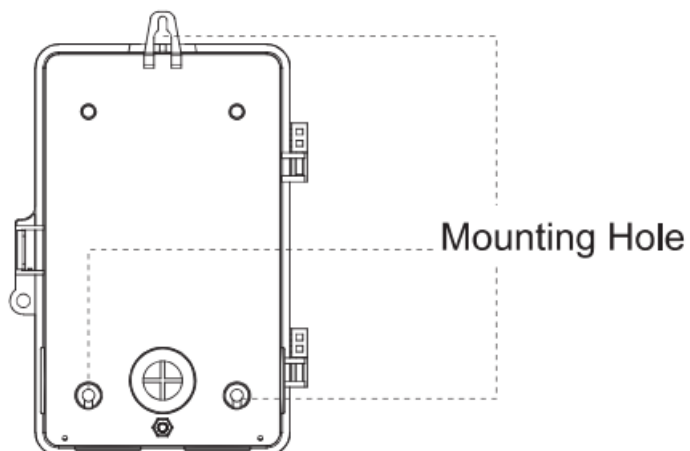


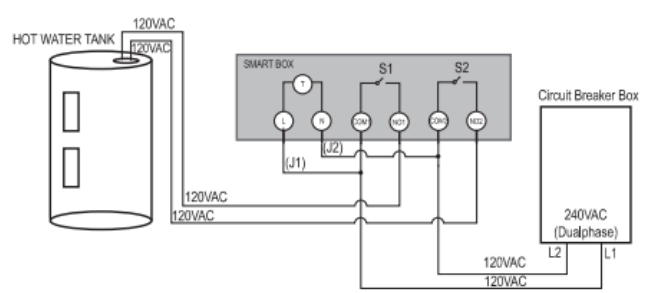
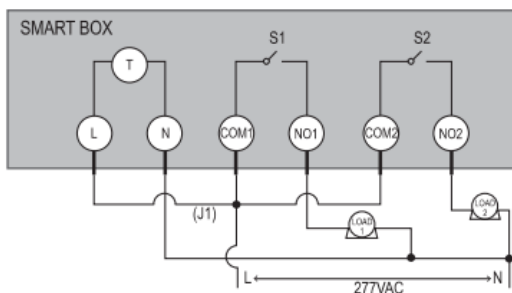
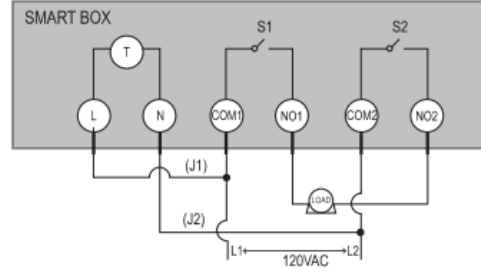
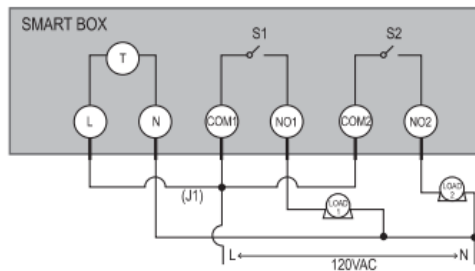
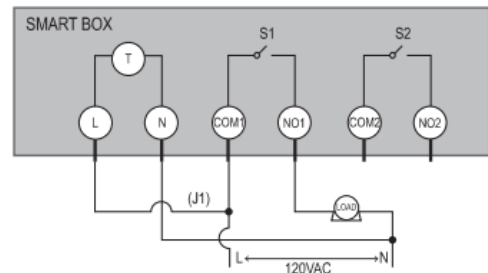
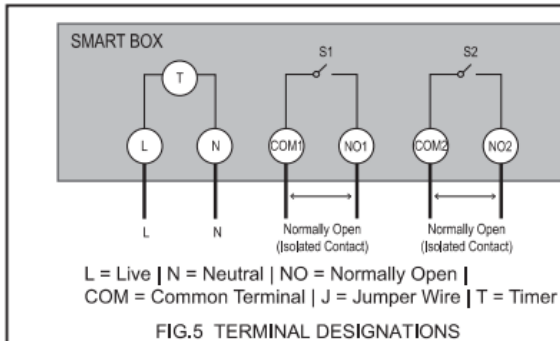
FIG.4 Mounting Holes

NOTE

- Before installation, please confirm the Wi-Fi signal is strong enough.
- Wi-Fi range can be affected by obstructions, metal objects, distance and weather. Mount unit should be as close to the router as possible
- Install upright, in a vertical orientation.
- Always close the rainproof door after use.

Connecting the Wires

1. Lift the plastic insulator off the retaining post to expose the terminal strip.
2. According to the wiring diagram (TYPICAL APPLICATION WIRING DIAGRAMS) to wire. Note: please connect the grounded wire to the grounding terminal.



Smart Life APP Setup

NOTICE

Due to continuous updates and improvements, the “Smart Life” app user interfaces may appear slightly different. In case of any differences, follow the in-app instructions.

1. Download the Smart Life APP Scan QR Code or search “Smart Life” in Google Play or the App Store to

download and install the app.



FIG.11 Download the APP

2. Open the "Smart Life" app. Tap "Register" to create a new account or Log In to log your account

The image displays two side-by-side screenshots of the Smart Life app's login and registration screens. The left screen is titled "Log In" and features a dropdown menu for "United States of America", a text input field for "Please enter your account", another for "Password", a blue "Log In" button, and a "Forgot Password" link. The right screen is titled "Register" and features a similar "United States of America" dropdown, an "Email Address" input field, a blue "Get Verification Code" button, and a checkbox for "I Agree" followed by links to "User Agreement" and "Privacy Policy".

FIG.12

3. Tap the top right corner "+", and then choose "Socket Wi-Fi"
4. Choose your network and enter the password.

This is a duplicate of the image in the previous block, showing the "Log In" and "Register" screens of the Smart Life app. It includes the same form fields, buttons, and links as described previously.

FIG.12

5. Long press the program button on the smart box until the blue light flash, then press the "next" button on the app step by step.

program button
on the smart box

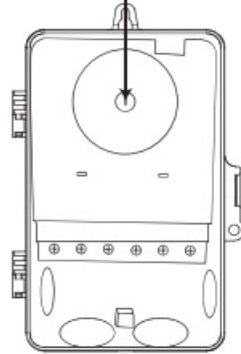


FIG.15

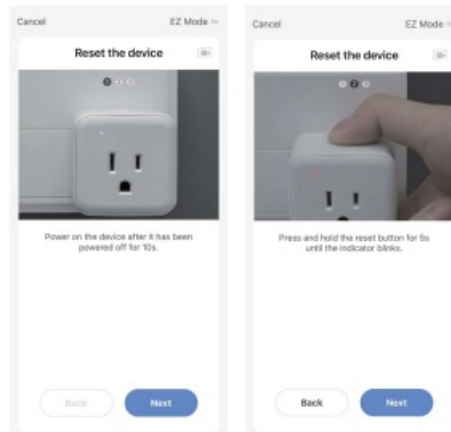


FIG.16

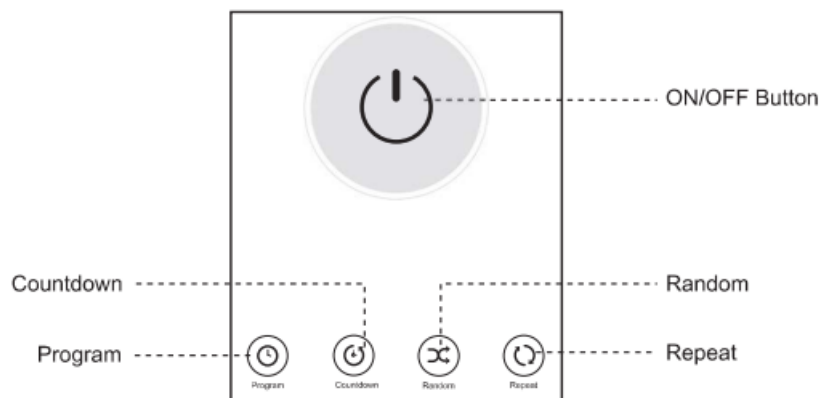
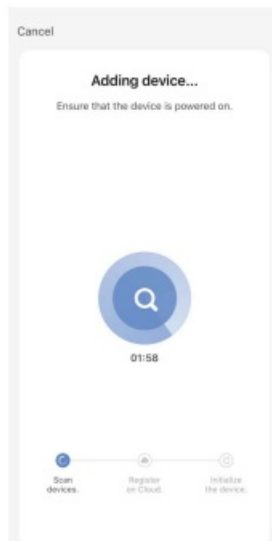


FIG.18 Timer Function

Turning Devices On/Off

To turn the smart box ON/OFF, 2 methods:

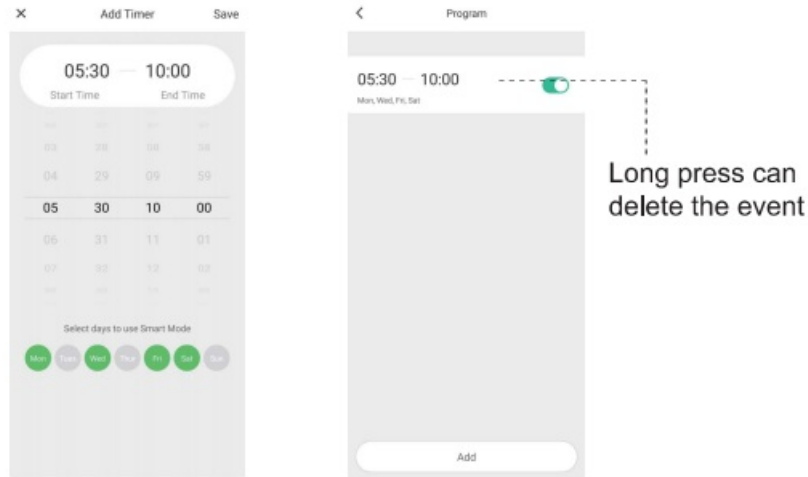
- Press the power button on the smart box
- Tap ON/OFF in the Smart Life APP.

Timer Function

Enter the Smart Box control interface, select the "Program", "Countdown", "Random", or "Repeat" to meet your needs.

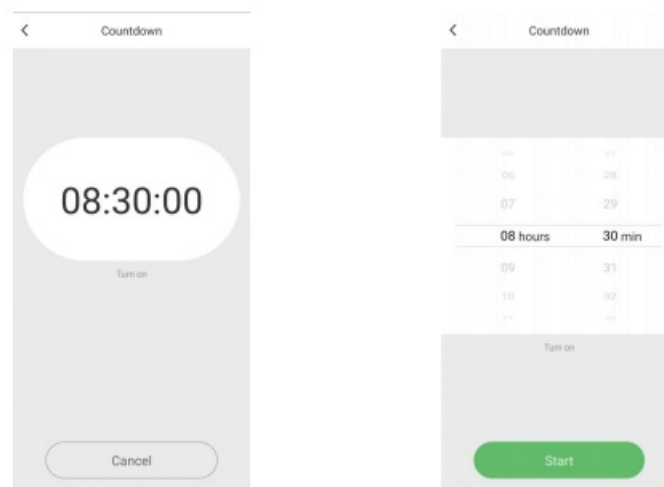
Program

Set the Start/End time in a 7-day period with a 1-minute interval according to your needs. Every program you set repeats weekly.



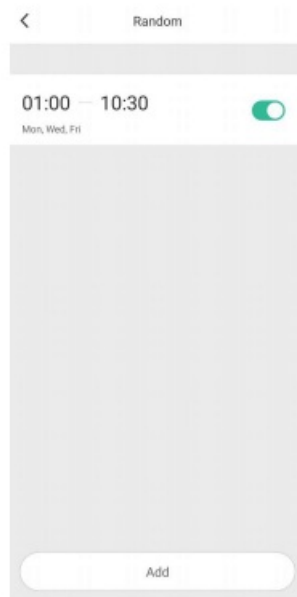
Countdown

Tap "Countdown" to set the hours and minutes, and then tap the "Start" button. The Smart Box will maintain the current state (on or off) until the end of the countdown. It will terminate countdown mode automatically if you turn on/off the smart box.



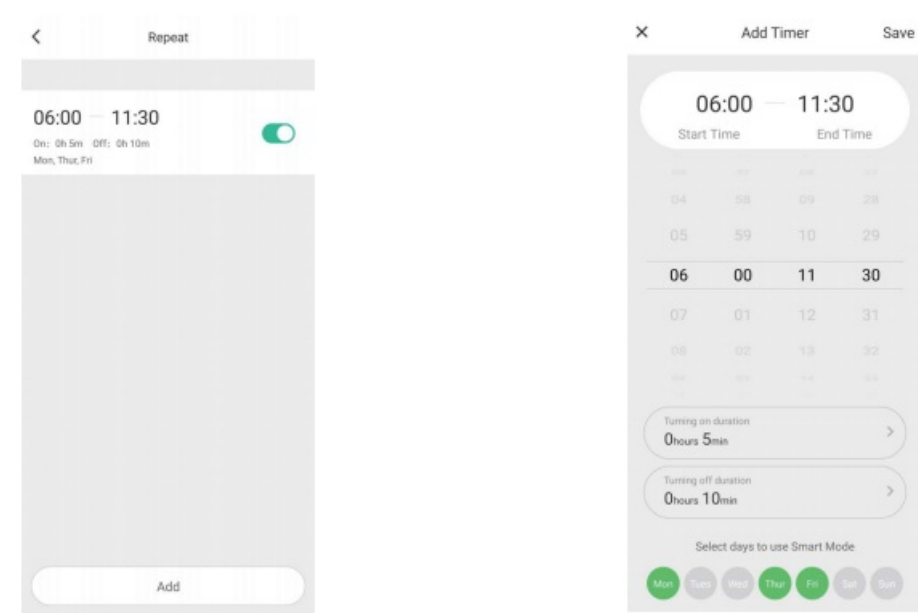
Random

Either +/-30 minutes than setting ON/OFF time, randomly control device when you are away from home. The setting process is the same as "Program".



Repeat

Set the duration of each ON and OFF, the start and end time according to your needs. The ON/OFF schedule will repeat between the start and end time. For example: You set a period from 6:00 AM to 11 :30AM on Mon, Thur and Fri, turn on your pump for 5 mins, and off for 10 mins. The Smart Box will repeat on/off from 6:00 AM to 11 :30AM.



Work with Alexa

Link Smart Life account to Alexa

1. Open your Alexa app, tap “Skills” in the menu, and then search “Smart Life” Select “Smart Life” and tap “Enable” to enable the Smart Life skills.
2. You will be directed to the account link page. Type in your “Smart Life” account and password, don’t forget to select your country/ region where your account belongs to and then tap “Link Now” to link your Smart Life account.

Control your smart devices

Discover devices: Echo needs to discover your smart devices before it controls them. You say “Alexa. discover devices” to Echo. Echo will discover devices which have already been added in the “Smart Life” app. You can also

tap “discover devices” to discover the smart devices. Discovered devices will be shown in the list.

Note : Every time you change the device’s name on the Smart Life app, Echo need to re-discover the device before controlling them.

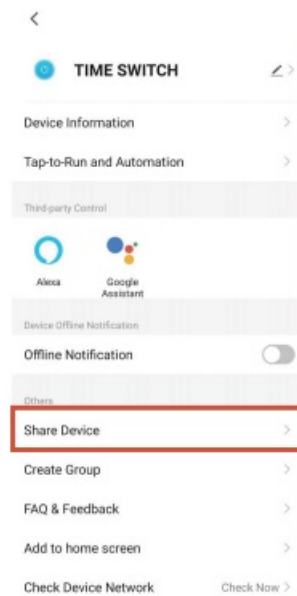
Work with Google Home/ Google Assistant

Open your Google Home app, add device in Home Control of the Google Home app. Select “Smart Life”, and fill in the correct login information of your account to finish the account linking. Your device will be shown in Home Control device list.

Share Your Device

Use Share Device to allow someone else to control your smart outlet (such as family, friends, roommates, or anyone you choose)

1. Select the device you want to share and press the top right corner g
2. Press the Share Device, and share it with your family



Troubleshooting

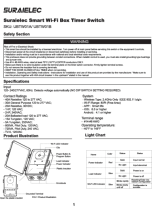
1. Why isn't my smart box connecting to the Smart Life app?
 - Confirm the signal strength is strong enough.
 - During the setup process, the smart box must be connected to a secure 2.4GHz WiFi network.
2. My Smart Box is offline.
 - Power outages, internet outages, or changing WiFi routers may cause your smart box to go offline. Check these devices first.
 - Reset and reconfigure your smart box with Smart Life APP.
3. Amazon Alexa or Google Assistant can't find my app or can't discover my smart box timer.
 - Make sure you log into the same Smart Life account as your box timer in the Alexa or Google assistant app.
 - Make sure your wireless network router is close enough to your smart box timer.
 - Check that your Amazon Alexa or Google Assistant is working properly.

Any other questions, please contact us firstly, and we can provide professional solutions.

One Year Limited Warranty

SuraiElec warrants to the purchaser of this product, for the period of one (1) year following the date on which Purchaser purchases the product, that the product shall be free of defects in design, assembly, material, or workmanship. If you have any problems or questions, please contact our Consumer Care by the E-mail: surai-tech@outlook.com

Documents / Resources

	SURAIELEC UBTW01B Smart Wi-Fi Box Timer Switch [pdf] User Manual UBTW01B, UBTW01A, Smart Wi-Fi Box Timer Switch
---	--