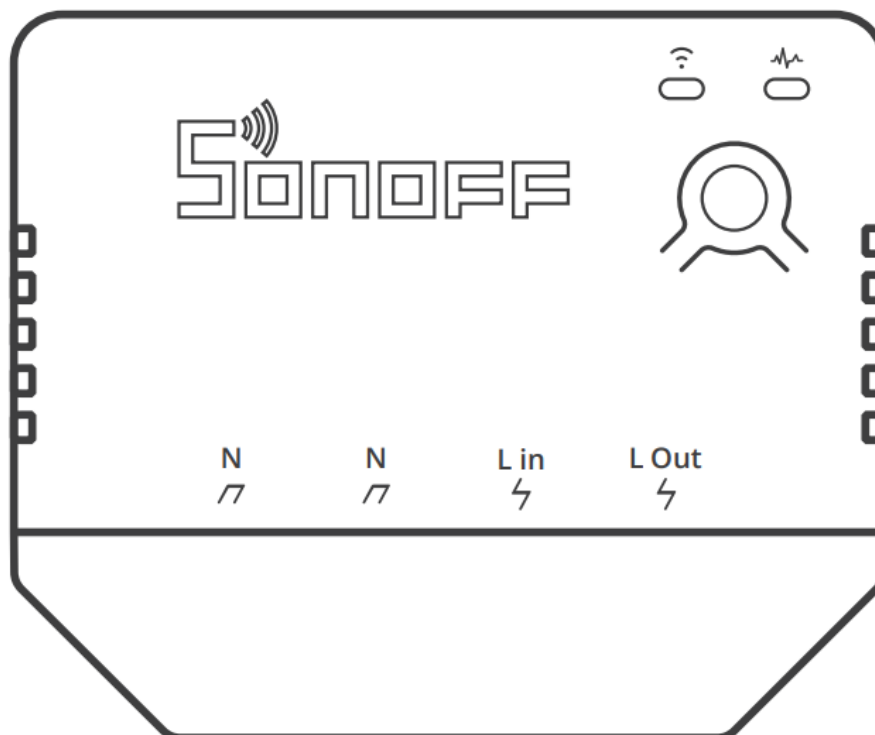


support Sonoff Mini R3 Smart Switch User Manual

[Home](#) » [support](#) » support Sonoff Mini R3 Smart Switch User Manual 

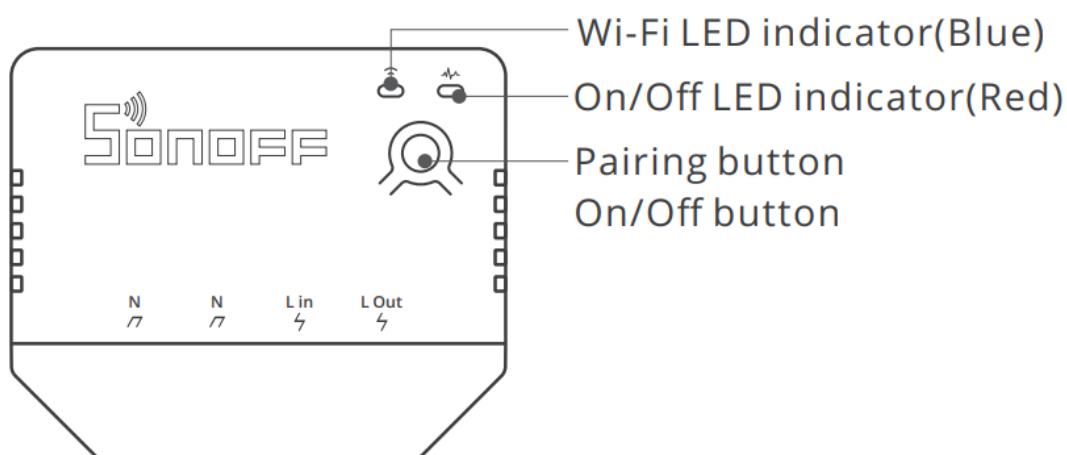




Contents

- [1 Product Introduction](#)
- [2 Features](#)
- [3 Operating Instruction](#)
- [4 Specifications](#)
- [5 Common Problems](#)
- [6 Documents / Resources](#)
 - [6.1 References](#)
- [7 Related Posts](#)

Product Introduction



⚠ The device's weight is less than 1 kg. An installation height of less than 2 m is recommended.

Features

MINIR3 is a smart switch that can connect up to 16A electrical appliances. With the “eWeLinkRemote gateway” function, the eWeLink-Remote sub-devices can be added to the gateway to control the switch of the gateway at close range locally, and can also trigger other smart devices in the smart scene through the cloud.



Remote Control



Single/Countdown
Timing



Voice Control



Share Control



Smart Scene



“eWeLink-Remote”
control



Inching Mode



DIY Mode



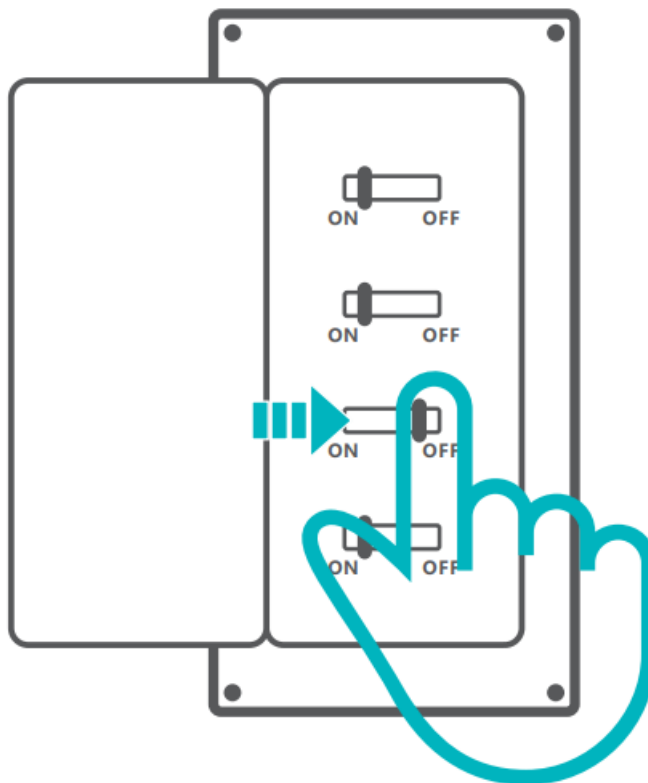
Group Control



LAN Control

Operating Instruction

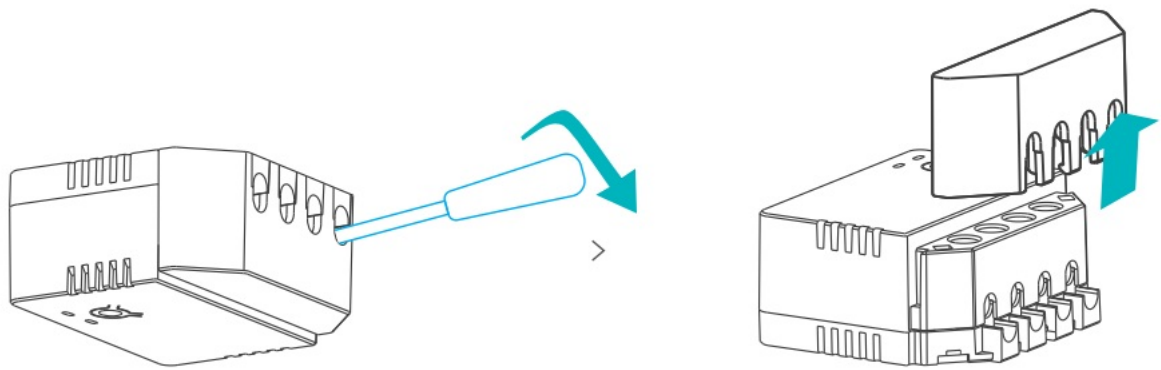
1. Power off



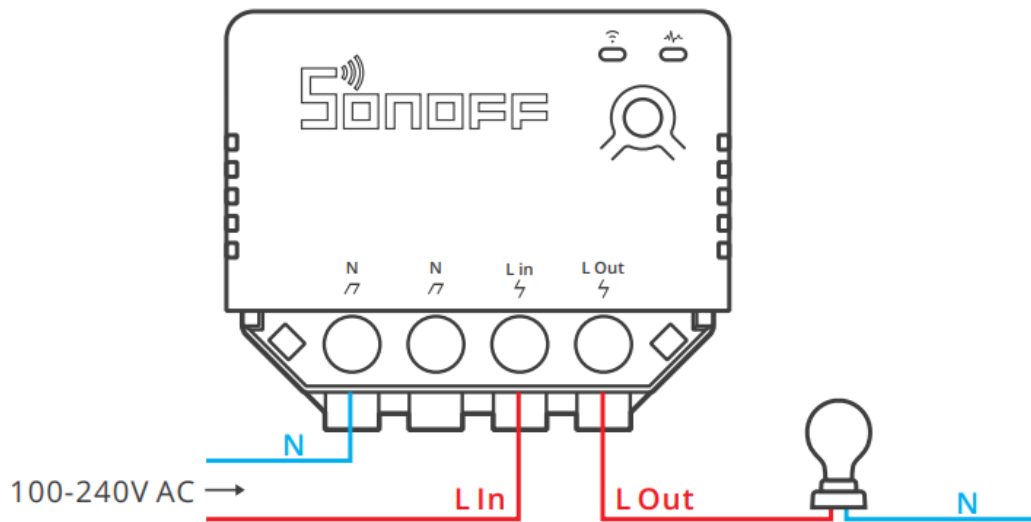
Please install and maintain the device by a professional electrician. To avoid an electric shock hazard, do not operate any connection or contact the terminal connector while the device is powered on!

2. Wiring instruction

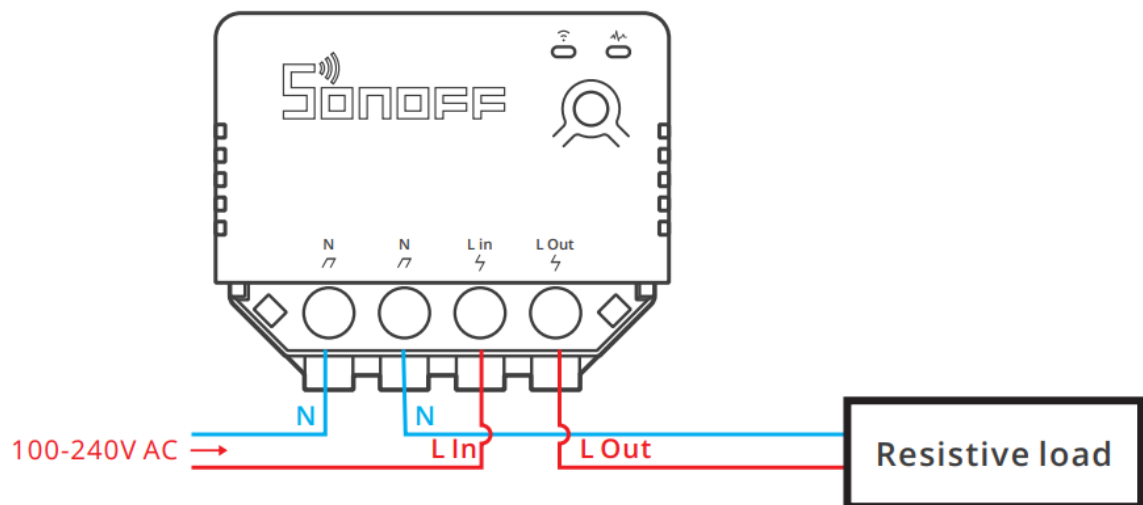
Before wiring, please remove the protective cover:



Light fixture wiring instruction:

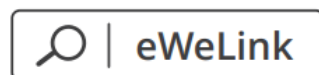


Appliance wiring instruction:



⚠ Close the protective cover after confirming the wiring is correct.

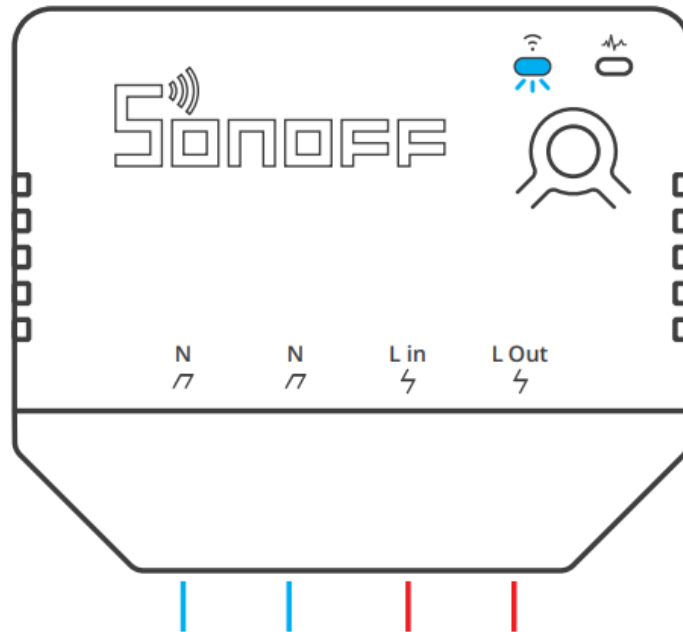
3. Download the eWeLink App



Android™ & iOS

<http://app.coolkit.cc/dl.html>

4. Power on



After powering on, the device will enter the Bluetooth pairing mode during the first use. The Wi-Fi LED indicator changes in a cycle of two short and one long flash and release.

⚠ The device will exit the Bluetooth pairing mode if not paired within 3mins. If you want to enter this mode, please long press the manual button for about 5s until the Wi-Fi LED indicator changes in a cycle of two short and one long flash and release.

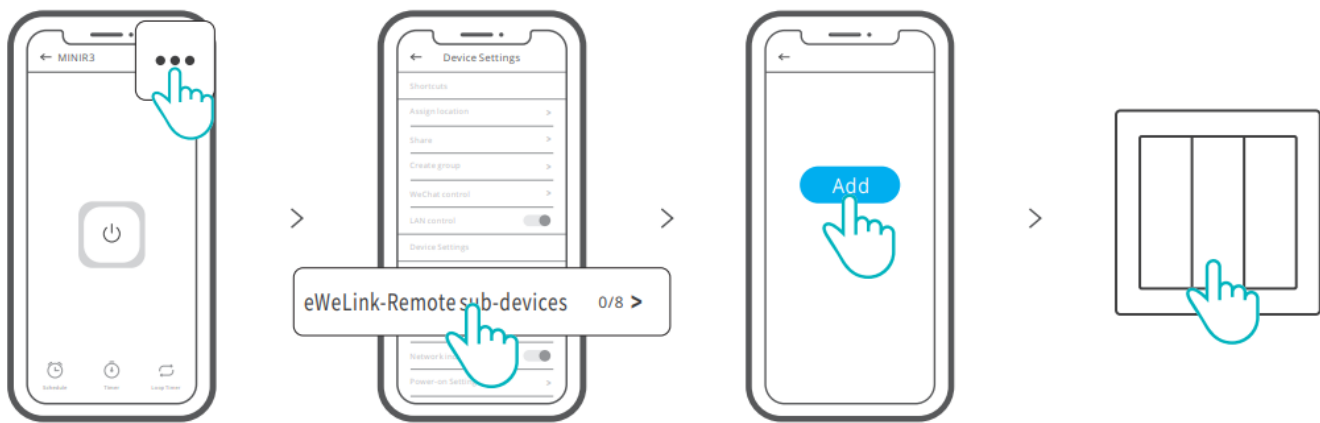
5. Pair with the eWeLink App



Tap “+” and select “Bluetooth pairing”, then operate following the prompt on the APP.

Add eWeLink-Remote Sub-devices

Enter the MINIR3 setting page, click eWeLink-Remote sub-devices on the App and trigger the sub-device by pressing the button on the device, then it will be added successfully.



! This device can be added up to 8 sub-devices.

Specifications

Model	MINIR3	
Input	100-240V — 50/60Hz 16A Max	
Output	100-240V — 50/60Hz 16A Max	
Max.load	3500W	
Wi-Fi	IEEE 802.11 b/g/n 2.4GHz	
Frequency range	2400-2483.5Mhz	
Version Information	Hardware Versions: V1.0	Software Versions: V1.0
Maximum RF output power	Wi-Fi: 18dbm(e.i.r.p)	BLE: 10dbm(e.i.r.p)
“eWeLink Remote” receiving distance	Up to 50M	
Working temperature	-10°C–40°C	
Operating systems	Android & iOS	
Shell material	PC VO	
Dimension	54x45x24mm	

Wi-Fi LED indicator status instruction

LED indicator status	Status instruction
Flashes (one long and two short)	Bluetooth Pairing Mode
Flashes quickly	DIY Pairing Mode
Keeps on	Device is Oline
Flashes quickly once	Fail to Connect to Router
Flashes quickly twice	Connected to Router but Fail to Connect to Serve
Flashes quickly three times	Firmware Updating

DIY Mode

The DIY Mode is designed for IoT home automation users and developers who would like to control the SONOFF device via existing home automation open-source platforms or local HTTP clients instead of the eWeLink App(<https://sonoff.tech>).

How to enter the DIY Pairing Mode:

Long press the Pairing button for 5s until the Wi-Fi LED indicator changes in a cycle of two short flashes and one long flash and release. Long press the Pairing button for 5s again until the Wi-Fi LED indicator flashes quickly. Then, the device enters DIY Pairing Mode.



The device will exit the DIY Pairing Mode if not paired within 3mins.

Factory Reset

Deleting the device on the eWeLink app indicates you restore it to the factory setting.

Common Problems

Fail to pair Wi-Fi devices to the eWeLink APP

1. Make sure the device is in pairing mode. After three minutes of unsuccessful pairing, the device will automatically exit pairing mode.
2. Please turn on location services and allow location permission. Before choosing the Wi-Fi network, location services should be turned on and location permission should be allowed.
Location information permission is used to obtain Wi-Fi list information. If you click Disable, you will not be able to add devices.
3. Make sure your Wi-Fi network runs on the 2.4GHz band.
4. Make sure you entered the correct Wi-Fi SSID and password, no special characters are contained.
A wrong password is a very common reason for pairing failure.
5. The device shall get close to the router for a good transmission signal condition while pairing.

Wi-Fi devices “Offline” issue, Please check the following problems by the Wi-Fi LED indicator status:

The LED indicator blinks once every 2s means you fail to connect to the router.

1. Maybe you entered the wrong Wi-Fi SSID and password.
2. Make sure that your Wi-Fi SSID and password don't contain special characters, for example, the Hebrew, or Arabic characters, our system can't recognize these characters and then fail to connect to the Wi-Fi.
3. Maybe your router has a lower carrying capacity.
4. Maybe the Wi-Fi strength is weak. Your router is too far away from your device, or there may be some obstacle between the router and device which blocks the signal transmission.
5. Be sure that the MAC of the device is not on the blacklist of your MAC management.

The LED indicator flashes twice on repeated means you fail to connect to the server.

1. Make sure the Internet connection is working. You can use your phone or PC to connect to the Internet, and if it fails to access, please check the availability of the Internet connection.
2. Maybe your router has a low carrying capacity. The number of devices connected to the router exceeds its maximum value. Please confirm the maximum number of devices that your router can carry. If it exceeds, please delete some devices or get a larger router and try again.
3. Please contact your ISP and confirm our server address is not shielded:

cn-disp.coolkit.cc (China Mainland)


as-disp.coolkit.cc (in Asia except for China)

eu-disp.coolkit.cc (in EU)

us-disp.coolkit.cc (in the US)

If none of the above methods solved this problem, please submit your request via help feedback on the eWeLink APP.

Documents / Resources

	<p>support Sonoff Mini R3 Smart Switch [pdf] User Manual Sonoff Mini R3 Smart Switch, Sonoff Mini R3, Smart Switch, R3 Switch, Switch</p>
-----------------------------------------------------------------------------------	---------------------------------------------------------------------------------------------------------------------------------------------------------------

References

- [🌐 Welcome to OpenResty!](#)
- [🌐 Welcome to OpenResty!](#)
- [🌐 Welcome to OpenResty!](#)
- [🇺🇸 SONOFF Official Homepage| Smart Home automation SONOFF Official](#)