



SC-5527AIO

All In One

Desktop

Computer



SUPERSONIC SC-5527AIO All In One Desktop Computer User Manual

[Home](#) » [Supersonic](#) » SUPERSONIC SC-5527AIO All In One Desktop Computer User Manual 

Contents

- [1 SUPERSONIC SC-5527AIO All In One Desktop Computer](#)
- [2 Precautions before use](#)
- [3 Descriptions](#)
- [4 Equipment start-up](#)
- [5 Precautions](#)
- [6 Introduction to Desktop](#)
- [7 Basic Operations](#)
- [8 Specifications](#)
- [9 Warranty](#)
- [10 Documents / Resources](#)
 - [10.1 References](#)
- [11 Related Posts](#)



SUPERSONIC SC-5527AIO All In One Desktop Computer

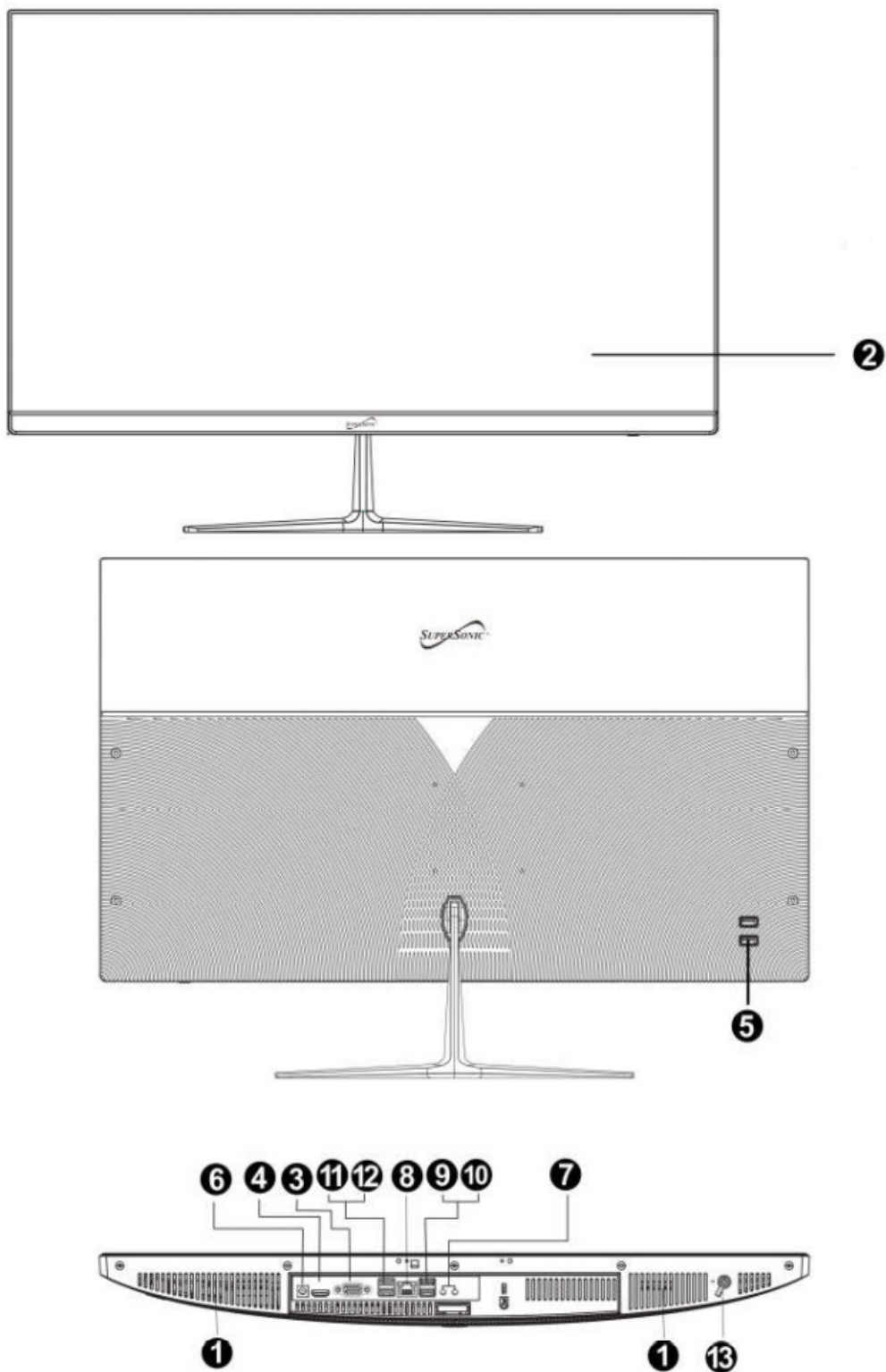


Precautions before use

- Avoid obstruction of the air inlet and outlet.
- The power indicator on the bottom of the all-in-one will remain lit after the power is turned on.
- The system will start up when it is used for the first time. Do not force power off to avoid data loss or damage to the system.

Descriptions

1. Speakers
2. Screen
3. VGA
4. HDMI
5. USB 2.0
6. DC
7. Minijack 3.5mm
8. RJ45
9. USB 3.0
10. USB 3.0
11. USB 2.0
12. USB 2.0
13. Power button

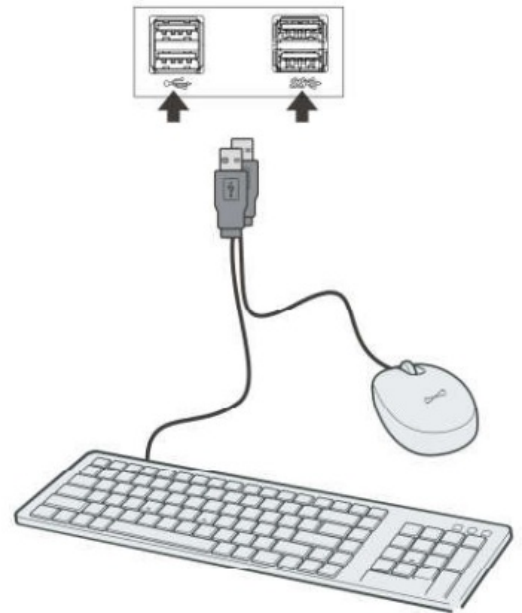
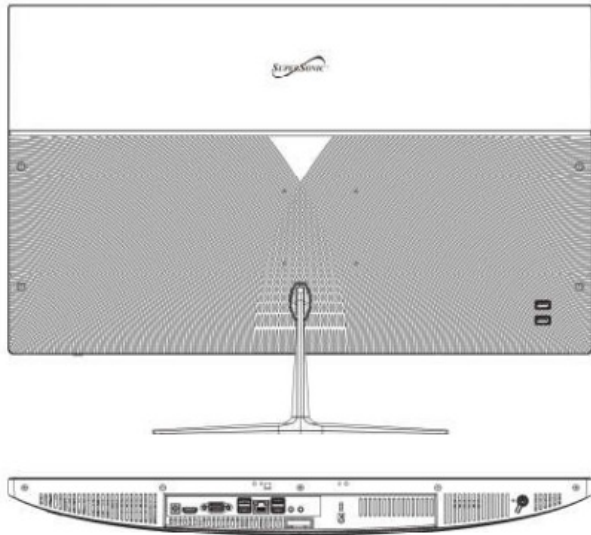


Equipment start-up

Warning: When connecting the keyboard and mouse to the all in one, make sure that the computer and other equipment are in the off state, do not switch them on.

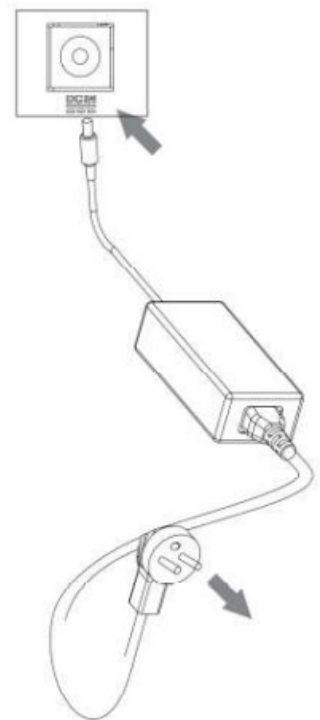
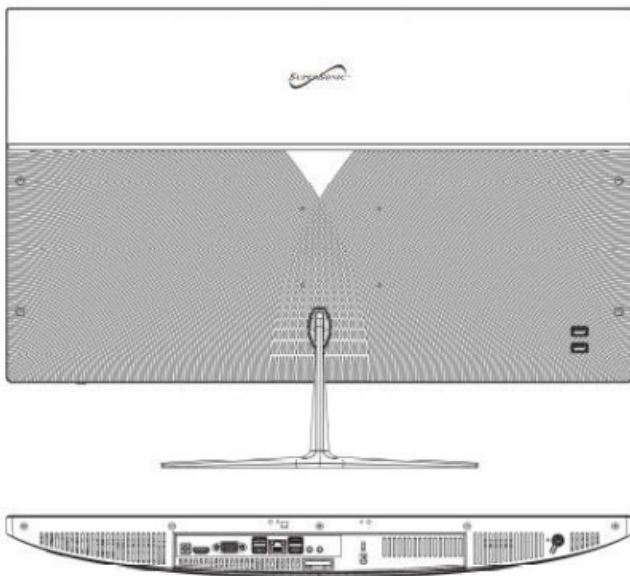
Connect the keyboard and mouse

Connect the keyboard and mouse as shown in the picture to the specified keyboard and mouse interface of the all-in-one.



Connect the all in one to the power outlet

Plug the power cord into the equipment plug and the other end into a 100~240V AC outlet and press the power button.



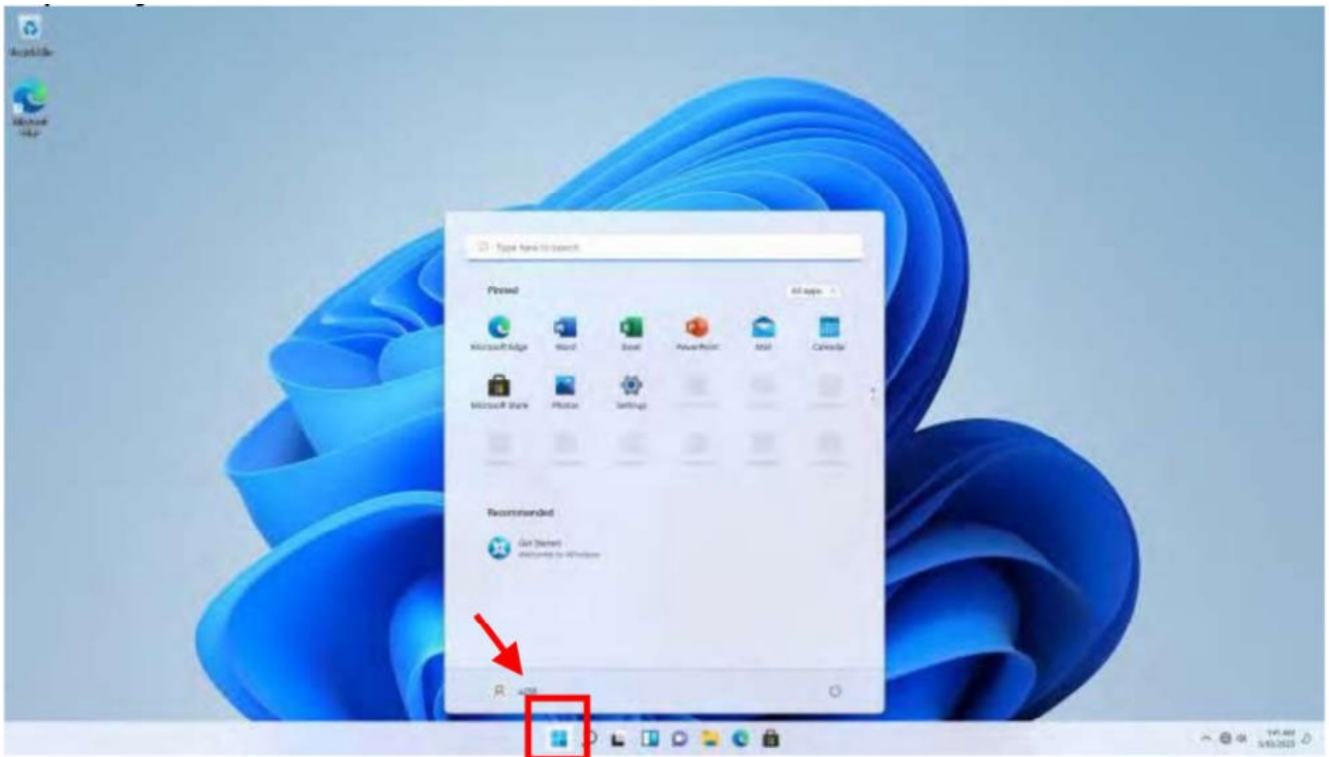
Precautions

- Please follow the following safety precautions when using your device.
- Do not use power cords, damaged plugs or loose plugs. Do not bend or damage the power cord. Do not touch the power cord with wet hands or pull the cord to disconnect the charger.
- Do not use the device while it is charging or touch it with wet hands.
- Do not hit or drop the charger and do not charge the battery with chargers that are not approved by the manufacturer.
- Do not use your device during an electrical storm. Handle and discard batteries and chargers with care.
- Do not handle damaged lithium ion batteries or that show leakage.

- Do not use the device near a pacemaker. If possible, avoid using it at a distance inferior to 15 cm, because the device can interfere with the pacemaker.
- Do not use the device in a hospital or near medical equipment that can be interfered by radio frequency.
- If you use medical equipment always make sure they are protected against radio frequencies. If you use a hearing aid, let the manufacturer know to obtain further information about interference.
- In potentially explosive environments, turn off the device.
- Always respect the rules, instructions and warning signs
- Do not use the device in or near other flammable chemicals refueling points (service stations) and / or explosives
- Do not store or transport flammable liquids, gases or explosive materials in the same compartment as the device, its parts or accessories
- If you want to charge the device, you must install an easily accessible power outlet.
- The images in this manual are only for information purposes and may differ from the actual product.

Introduction to Desktop

1.

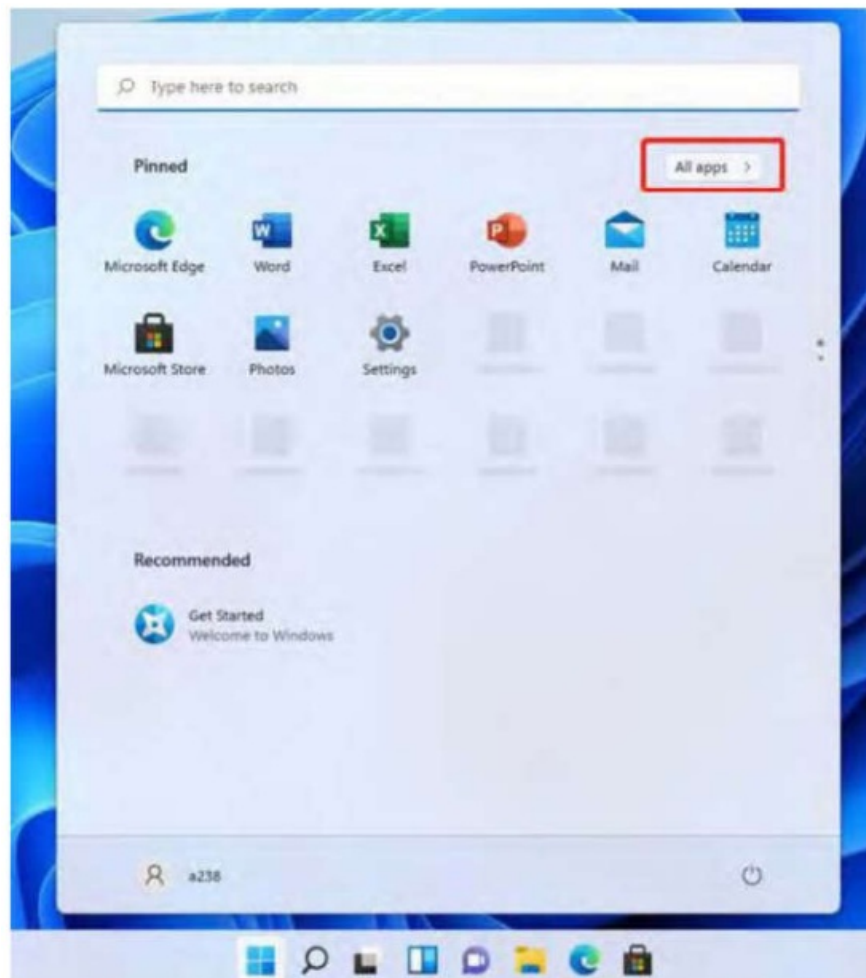


Windows 11 Startup Menu:

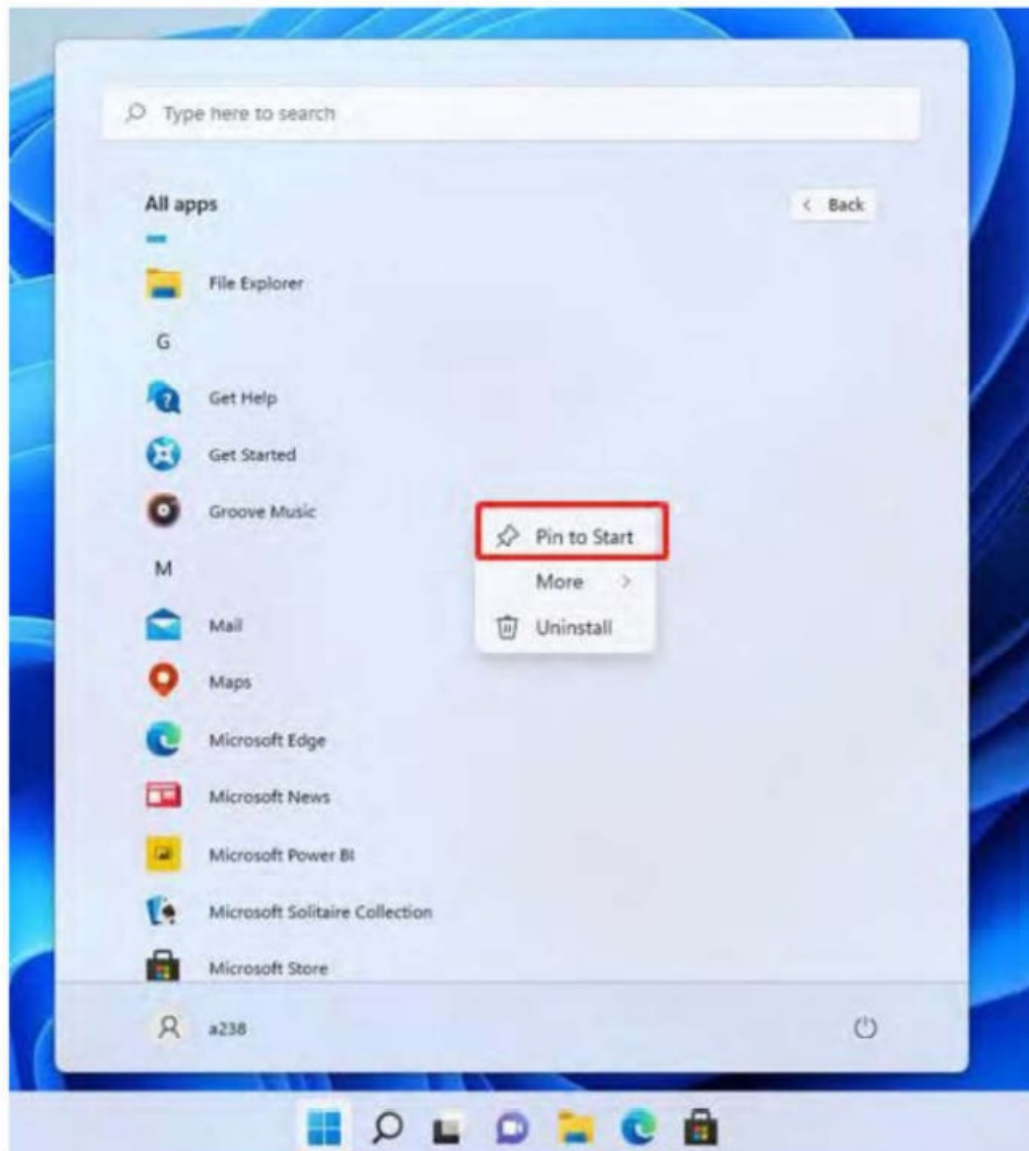
- On the start screen, you can see many application programs you can select the programs you need to open. You will need to log on to your Microsoft account for some application program to completely run.

2. Introduction to app Interface

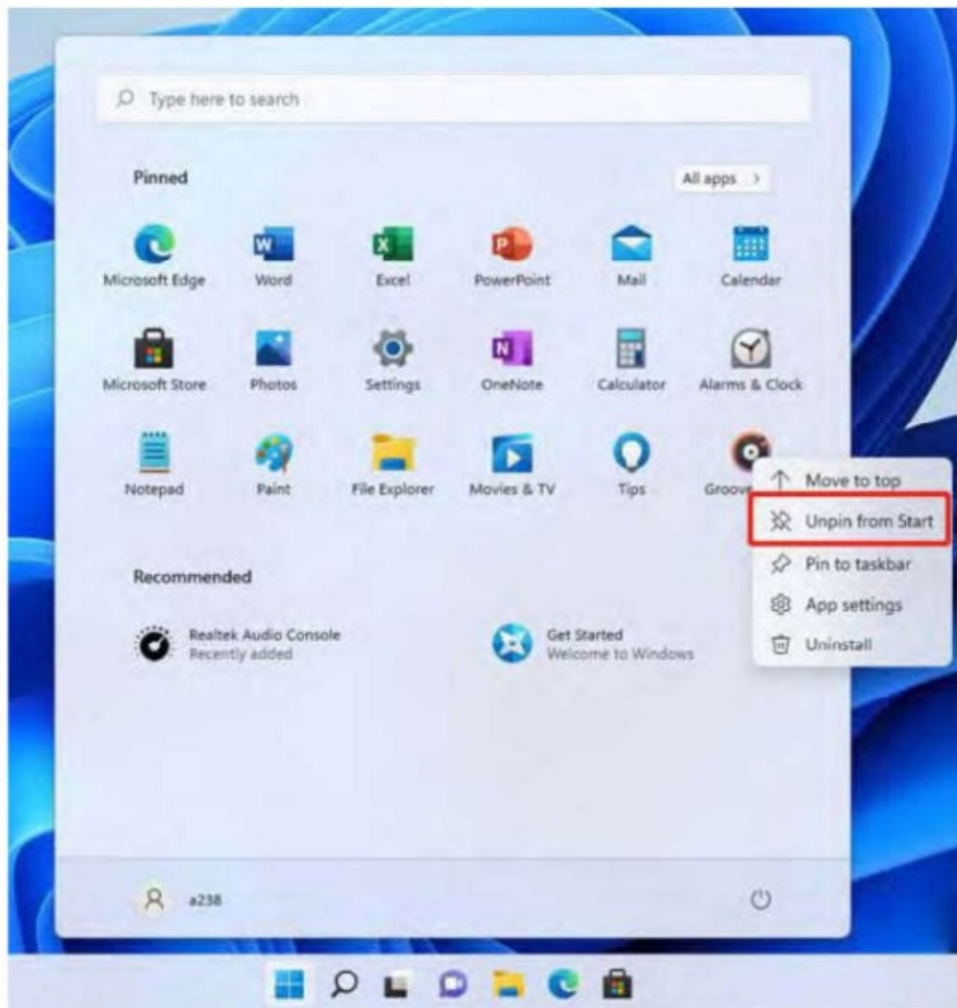
- Besides the application programs already fixed on the start screen, you can also add and start other software application programs.



- If you want to fix more application programs on the start interface, see the operation in the figure below,
(1) Right click the properties icon (2) Select "pin to start".

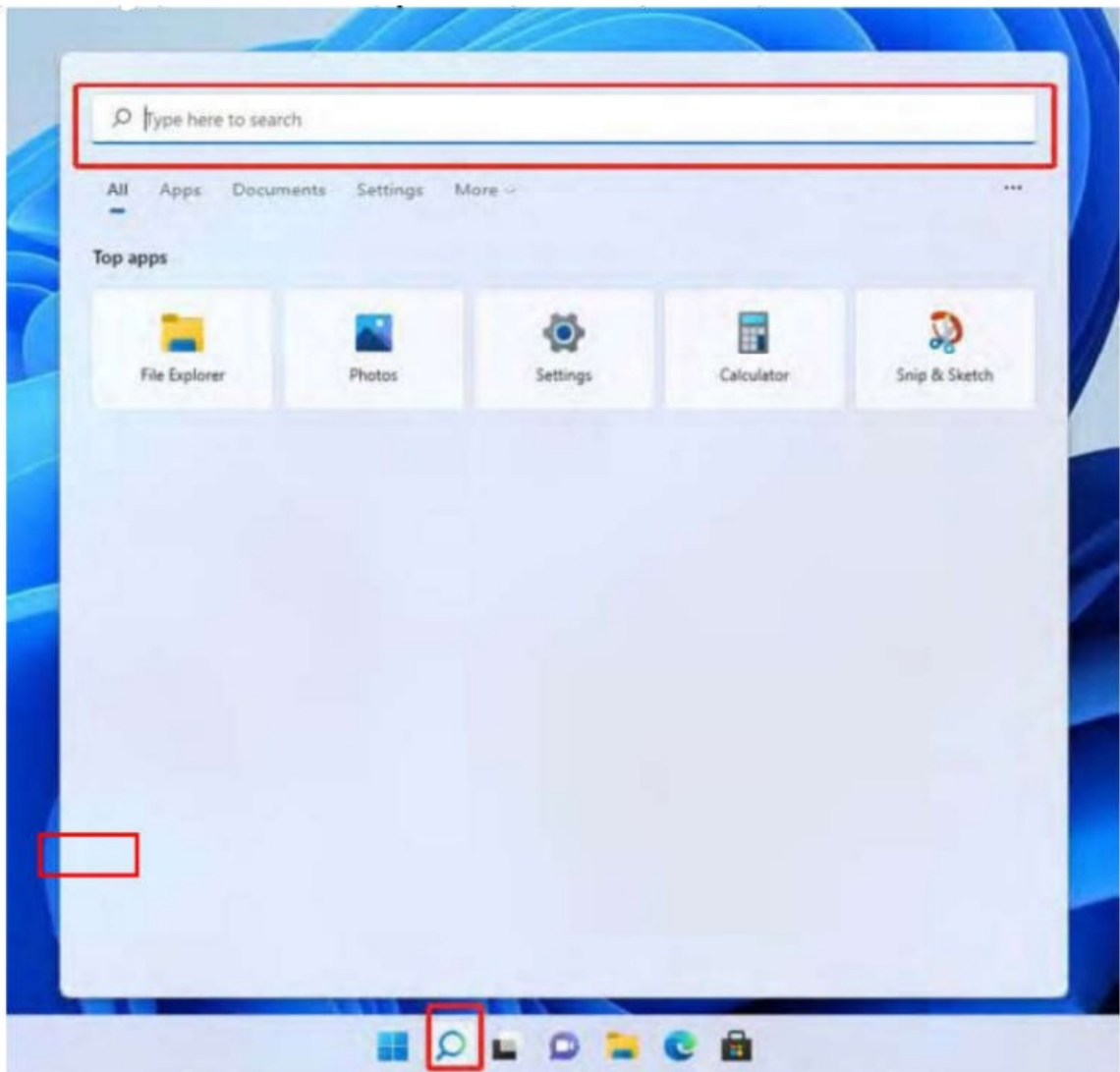


- Conversely, if you want to cancel or delete a certain application in the start screen, (1) Right click the properties icon (2) Select "Unpin from start".



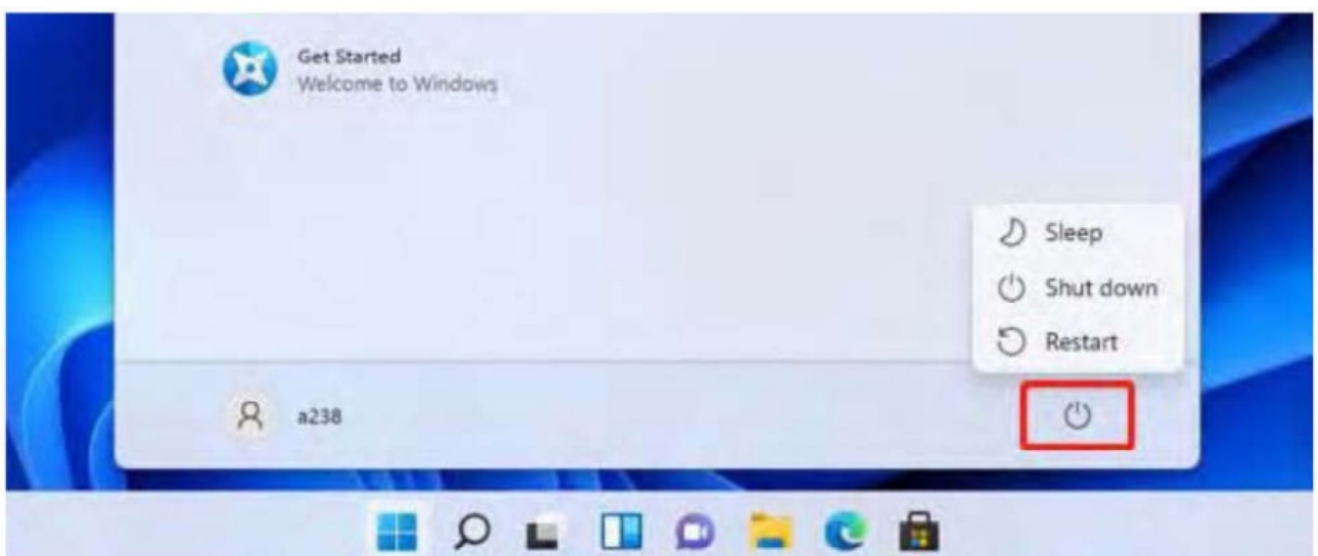
3. Search menu

- Use the External Keyboard connected to your device and Type on the Search box for Apps, Settings, Documents, photos, Music, WEB, etc...



Basic Operations

1. Sleep, restart and power off



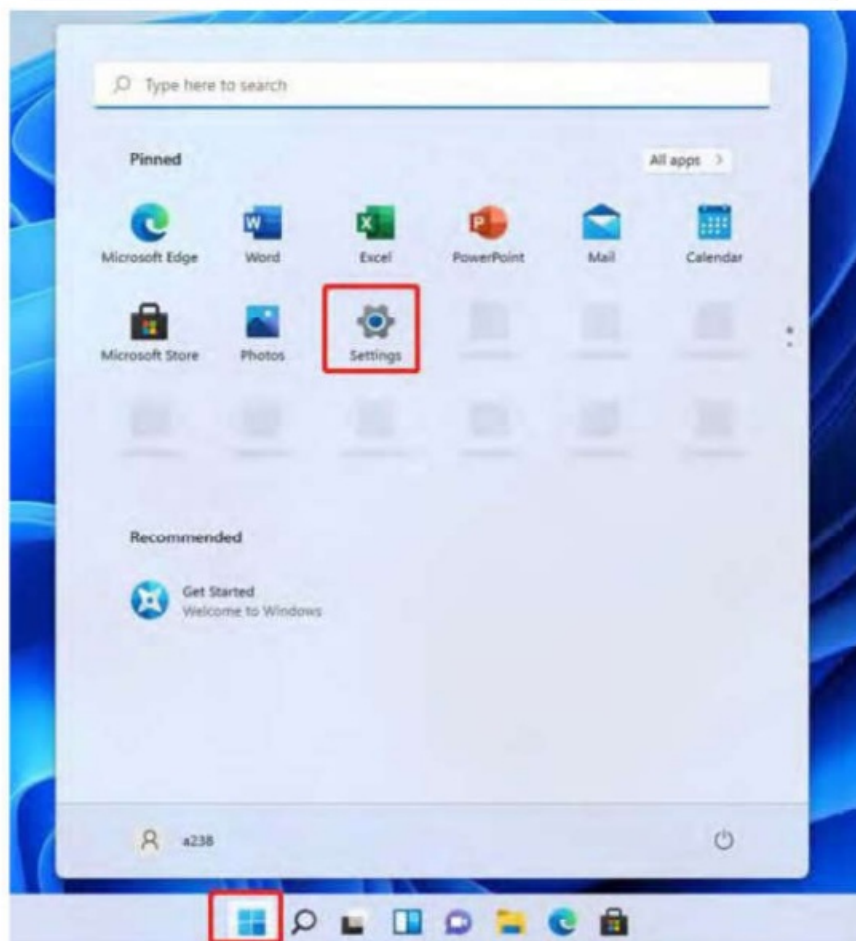
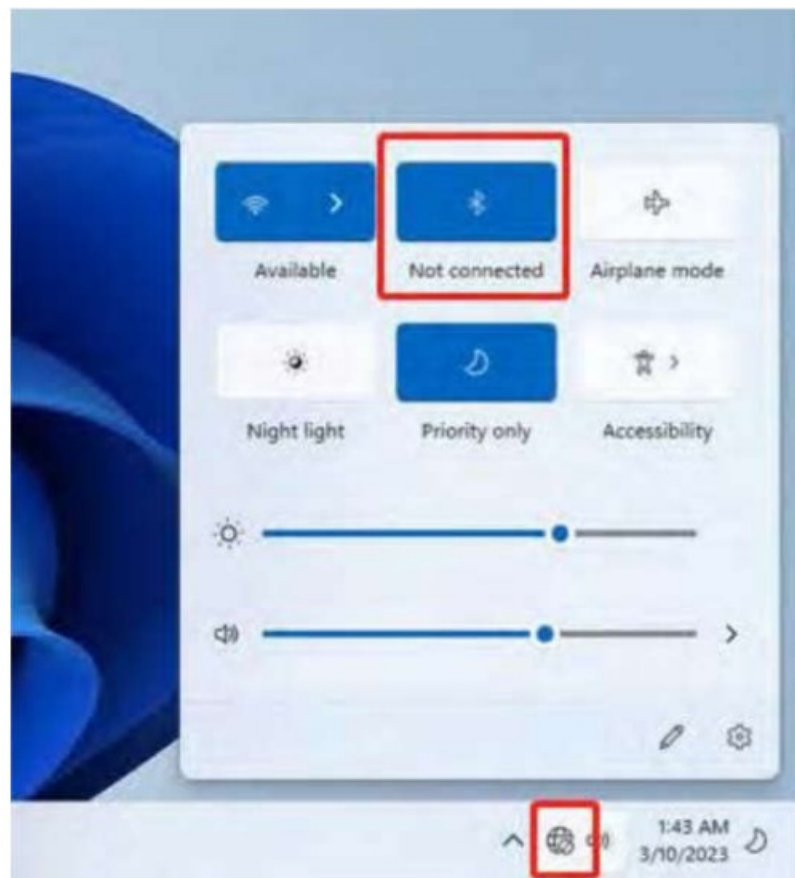
2. Bluetooth connect

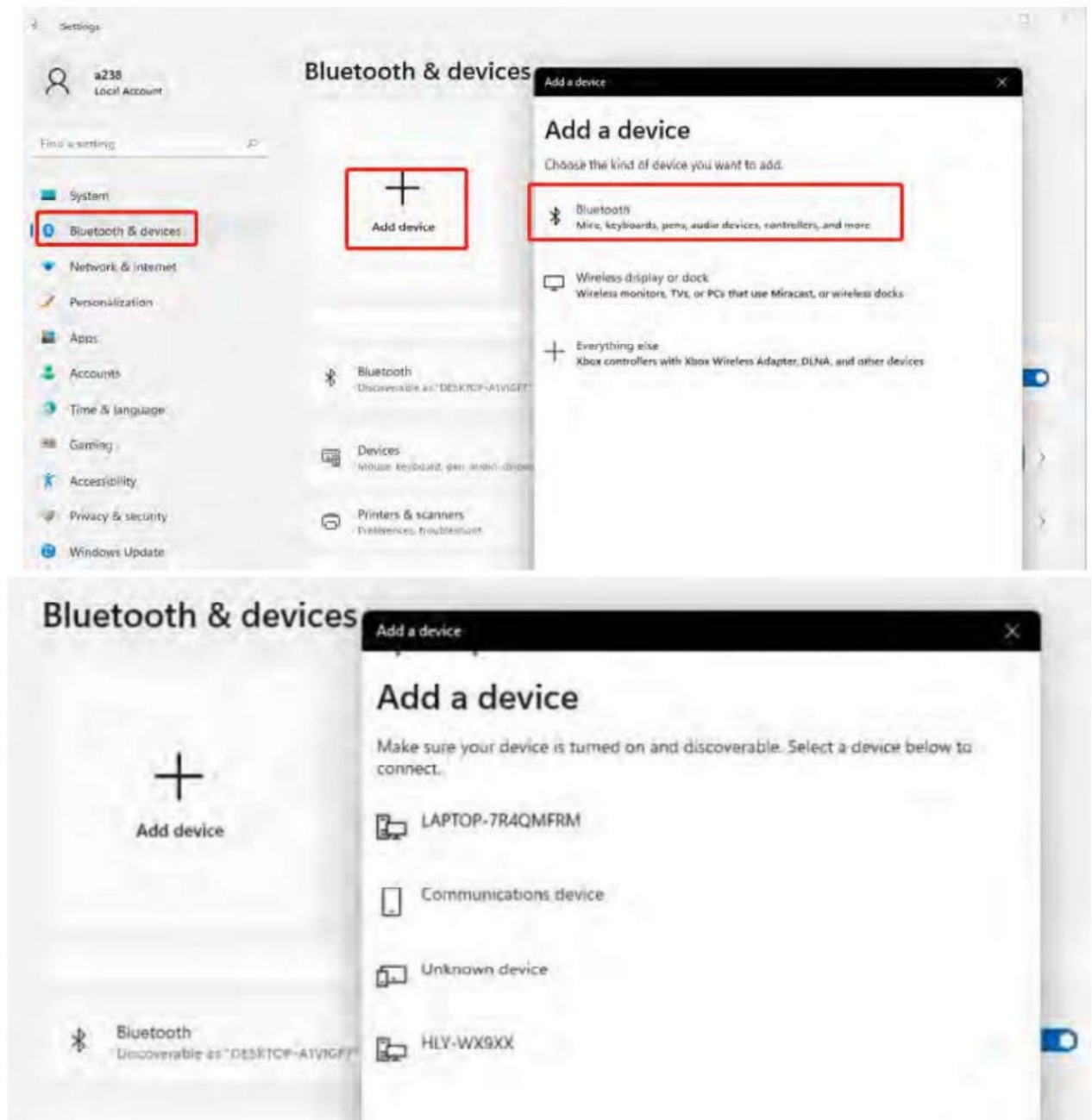
- Click the  then click the  to open the Bluetooth. Click the  then

click "Settings"; enter to the setting interface, then click Bluetooth & devices




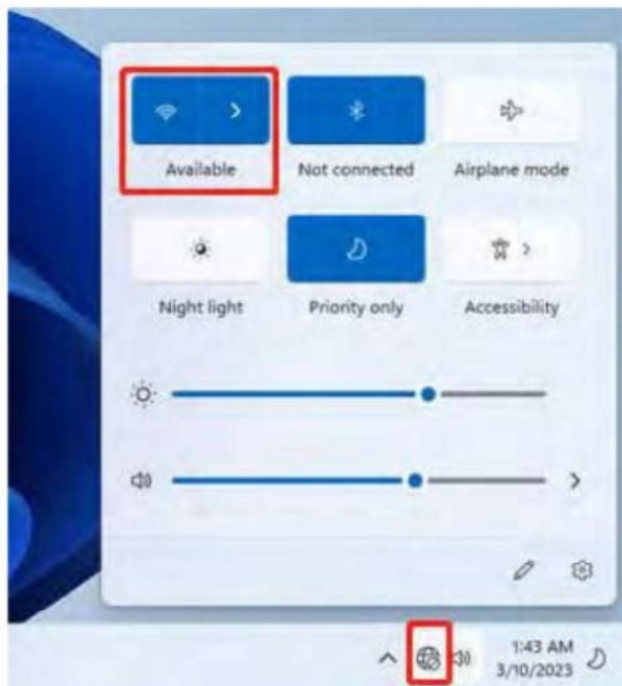
to search other devices.





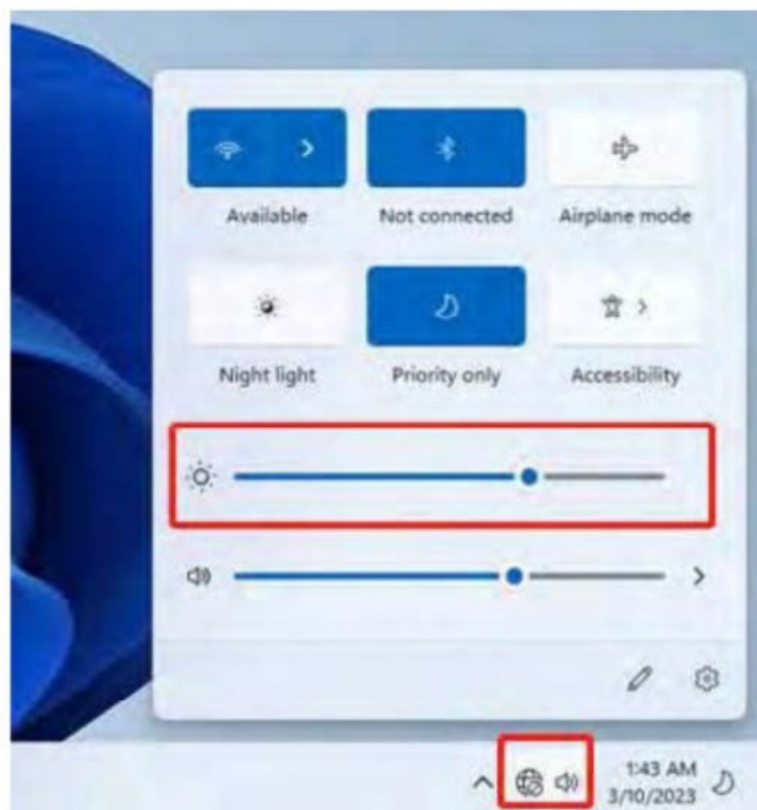
3. WIFI Connect

- Click the  to open the Wi-Fi, and then choose the Wi-Fi you need to connect, enter the password.



4. Display Brightness and Power management

- **Display brightness:** There are two ways to change brightness. A. Click icon on the taskbar and click the sun icon to switch the brightness



- B. Settings>System > Display> Brightness



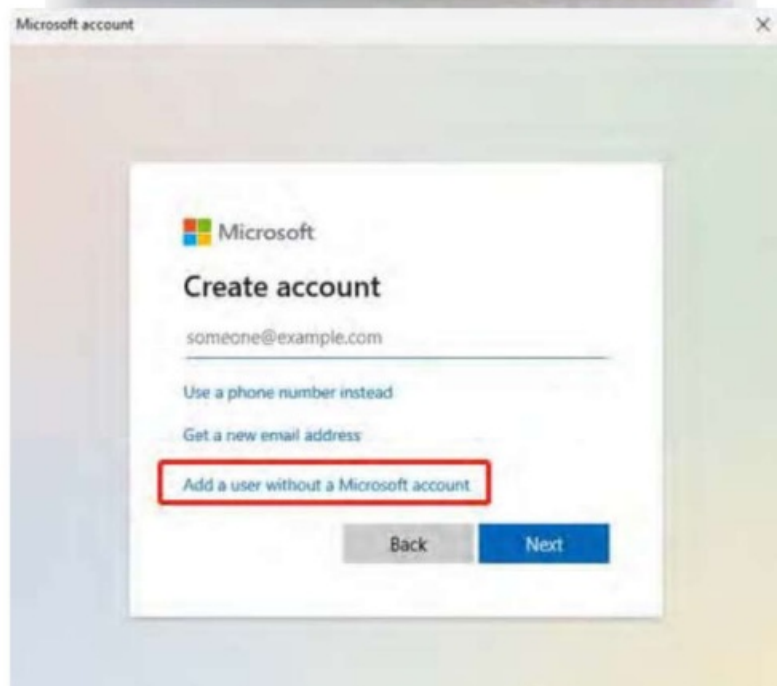
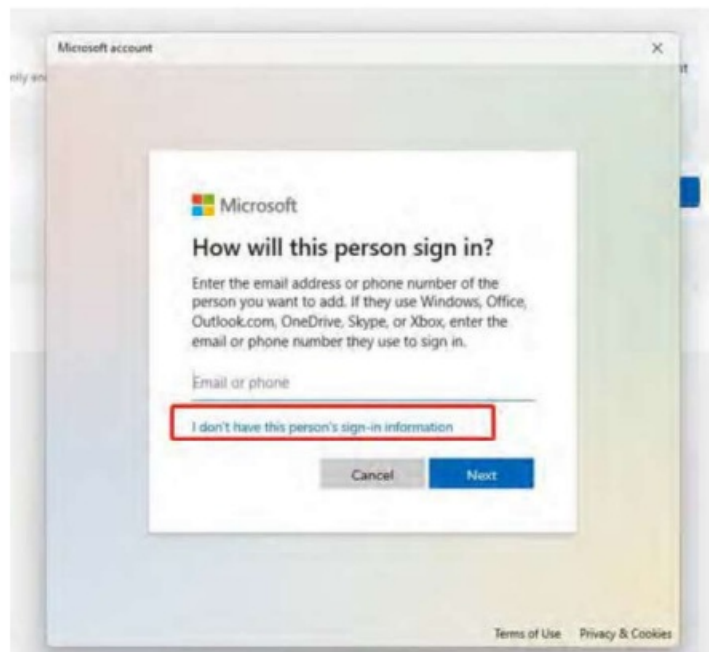
- **Power management:**
 - Settings>system>Power



5. Add an account

- Add a location account: Settings>Accounts > Family&other users Click “Add account” at “Add other user”and fill in a new account following the guild.





Microsoft account

Create a user for this PC

If this account is for a child or teenager, consider selecting **Back** and creating a Microsoft account. When younger family members log in with a Microsoft account, they'll have privacy protections focused on their age.

If you want to use a password, choose something that will be easy for you to remember but hard for others to guess.

Who's going to use this PC?

User name

Make it secure.

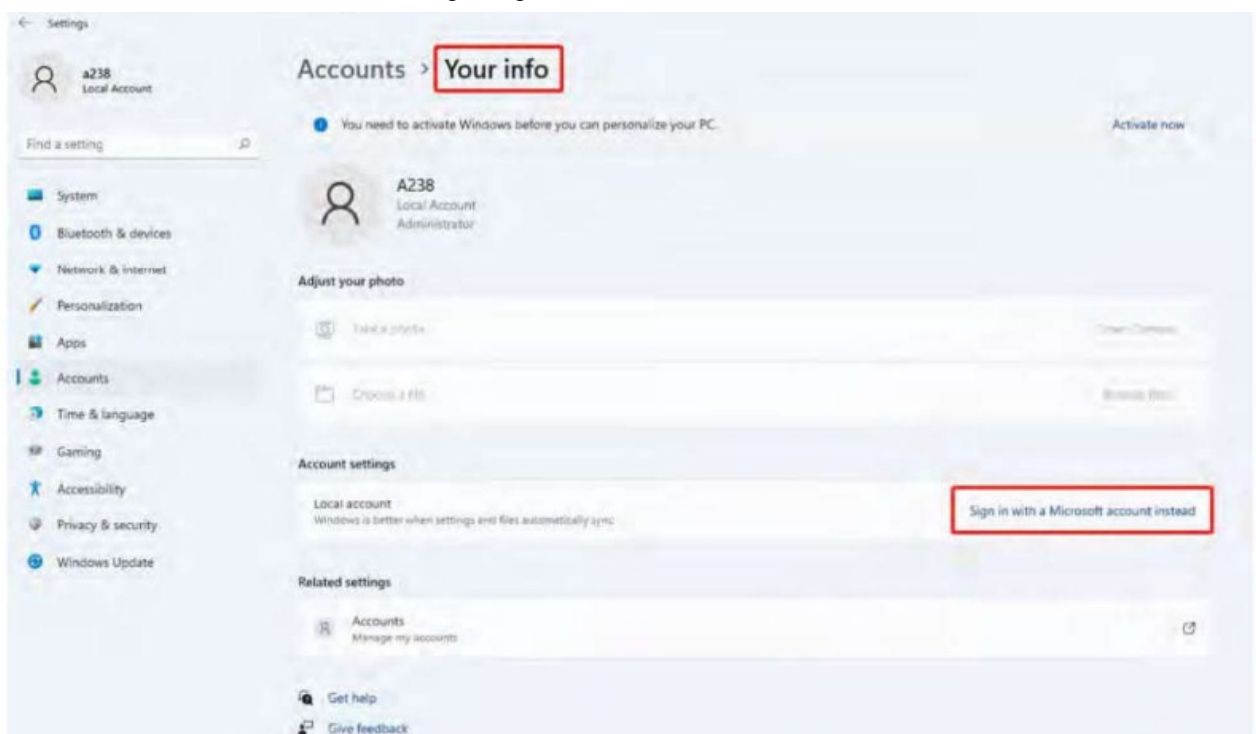
Enter password

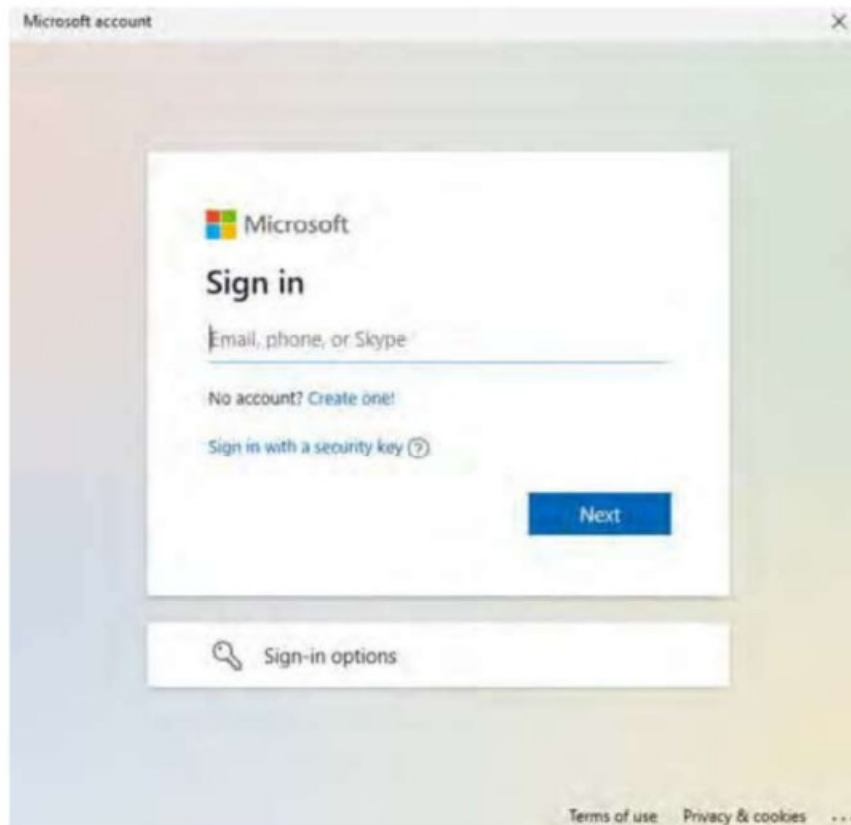
Re-enter password

Next

Back

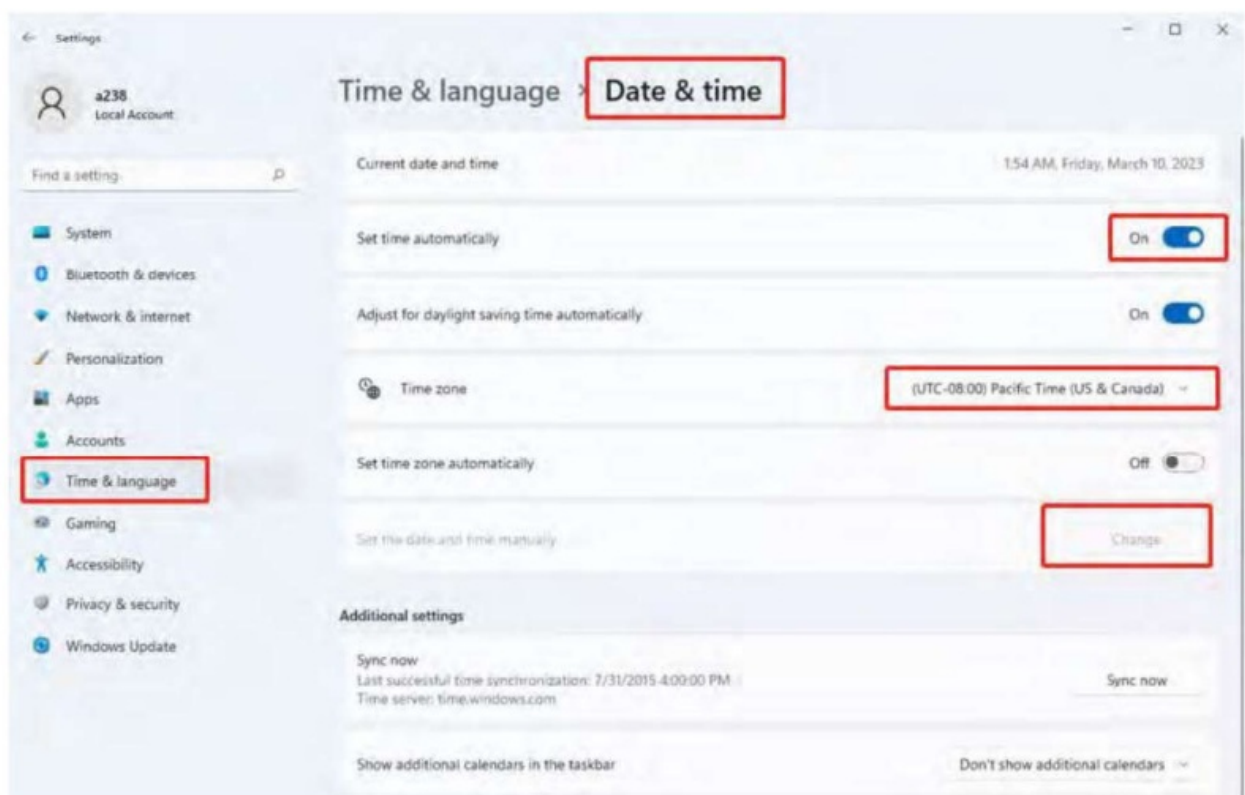
- **Add a Microsoft account:** Settings> Accounts> your info Click “sign in with a Microsoft account instead” and fill in a Microsoft account following the guide.



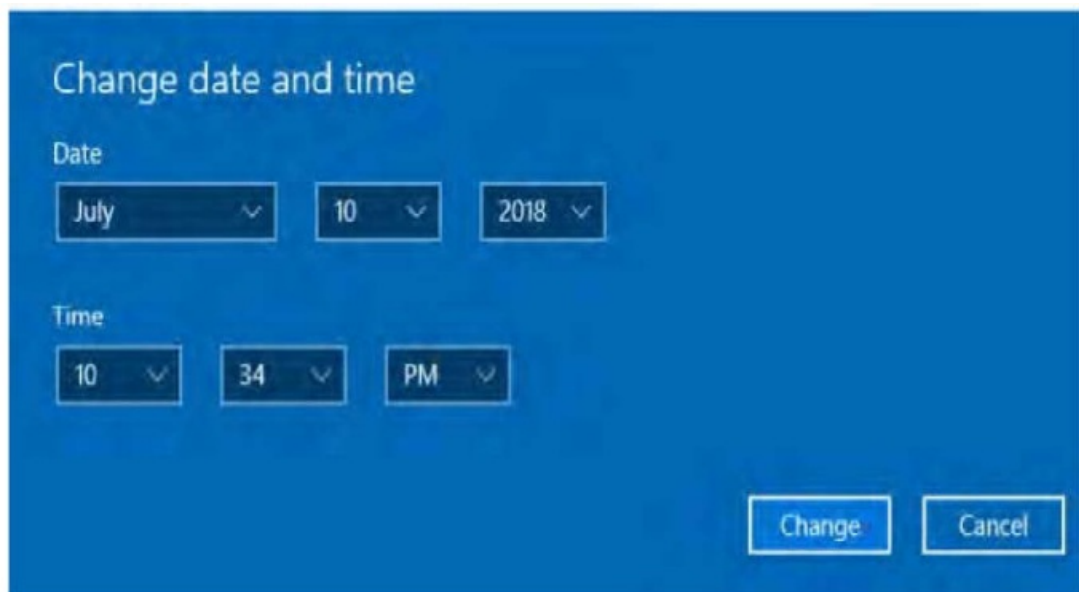


6. Adjust the date and time Date and time :

- Settings> Time&Language>Date&time"Set time automatically" option is on by default. The time will be set automatically when Internet is connected via wifi. You can change the time zone through "time zone" option.



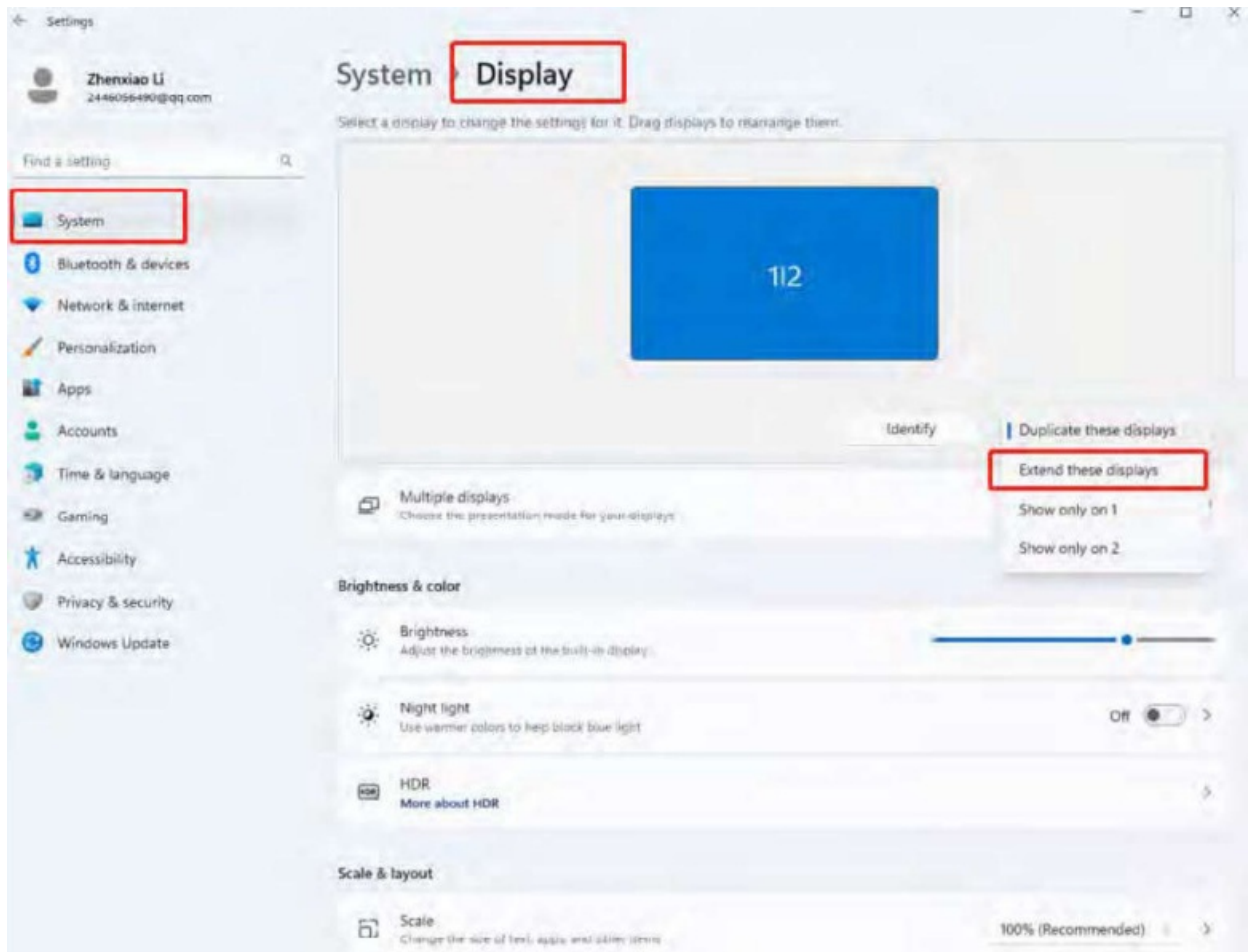
- If you need to set the time by yourself, please turn off "Set time automatically" option and the "change" option will be active.



- **Region:** Settings> Time&Language > Language&Region

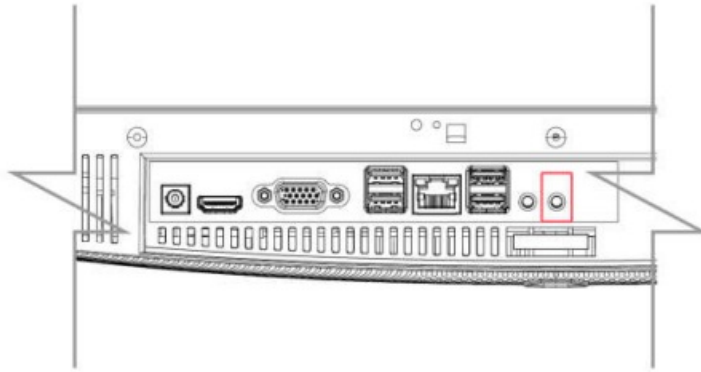
7. Connecting another monitor as 2nd Screen.

- Connect another monitor to the device through the HDMI interface. Open settings-system-Display and select “Extend these displays” and then the other monitor will show as 2nd Screen.



8. Connecting Speakers

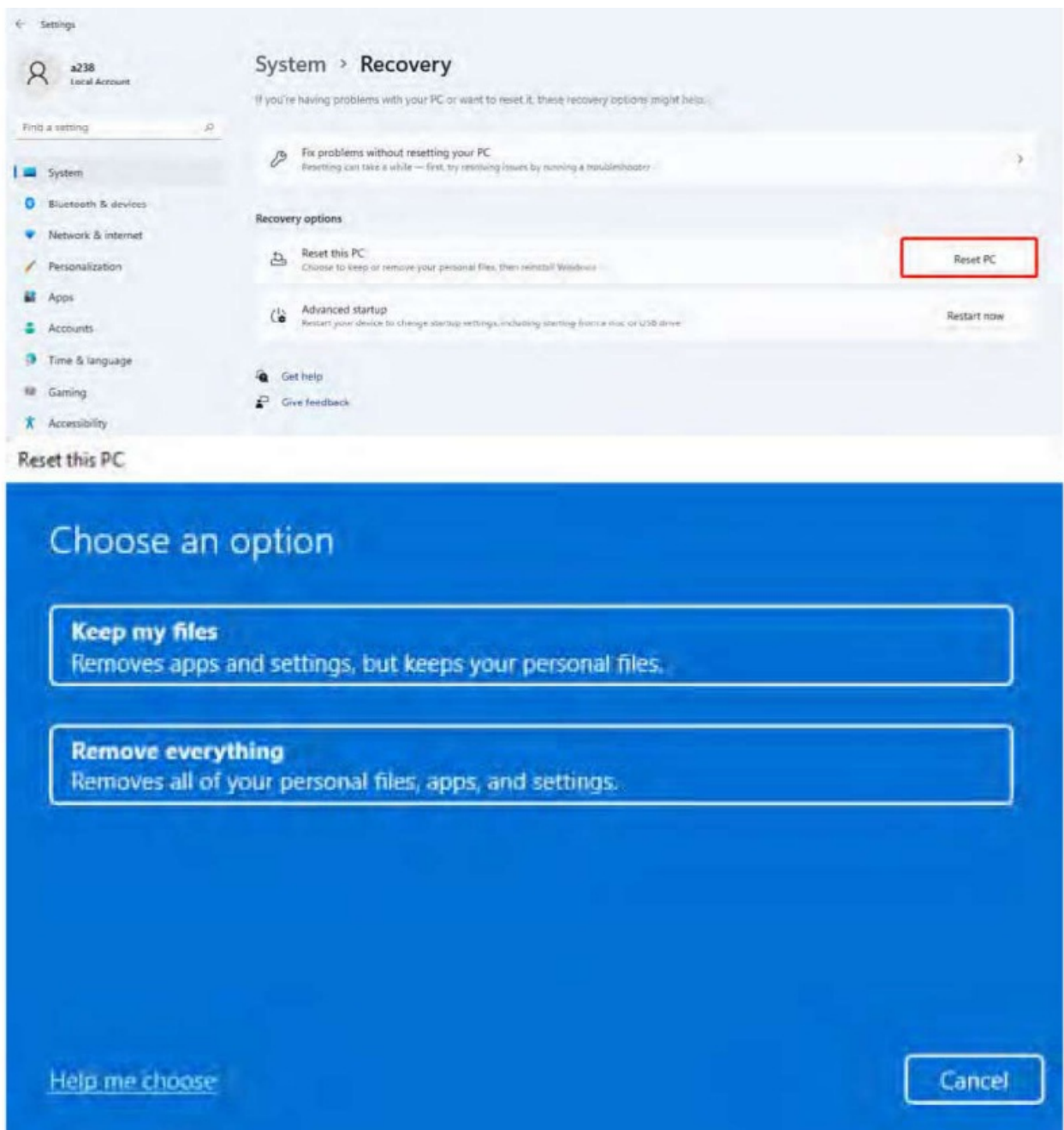
- a. If the speaker has a 3.5 mm plug, insert it to the headphone hole.



- b. If the speaker has Bluetooth, connect it to the device through Bluetooth following the steps as above “Bluetooth connect”.

9. Reset the PC

- Settings> system> RecoveryClick “Reset PC” and select one option you want. Then follow the building steps to reset this PC.



10. Troubleshoot

- You can find almost troubleshoot tips in Settings> system>Troubleshoot

Specifications

Item	SC-5527AIO
Display	1920x1080
OS	Windows 11
Input method	USB or bluetooth Keyboard and mouse
DDR RAM	16GB
Capacity	512GB
Audio	AAC,FLAC,MP3,OGG,WAV,etc...(some need third party software support)
Video	3GP,MOV,MP4,MPG,AVI,etc...(some need third party software support)
E-book	Support
Wireless network	Support WIFI
Language	English (other languages need to be downloaded from Internet)
OTG	Support
Temperature	-20°C to 60°C


Warranty

Basic Warranty Statement

Supersonic Inc. ("Supersonic") warrants this product to the original purchaser ONLY, to be free from defects in materials and workmanship under normal use, for ninety (90) DAYS from the date of original purchase. Proof of purchase (receipt) required

Please visit <http://www.supersonicinc.com/warranty> for additional information.

Documents / Resources

	<p>SUPERSONIC SC-5527AIO All In One Desktop Computer [pdf] User Manual</p> <p>SC-5527AIO All In One Desktop Computer, SC-5527AIO, All In One Desktop Computer, One Desktop Computer, Desktop Computer, Computer</p>
---	---

References

- [User Manual](#)

[Manuals+](#), [Privacy Policy](#)

This website is an independent publication and is neither affiliated with nor endorsed by any of the trademark owners. The "Bluetooth®" word mark and logos are registered trademarks owned by Bluetooth SIG, Inc. The "Wi-Fi®" word mark and logos are registered trademarks owned by the Wi-Fi Alliance. Any use of these marks on this website does not imply any affiliation with or endorsement.