



SUPERSONIC SC-5524AIO All in One Desktop Computer User Manual

[Home](#) » [Supersonic](#) » **SUPERSONIC SC-5524AIO All in One Desktop Computer User Manual** 

SUPERSONIC SC-5524AIO All in One Desktop Computer



Contents

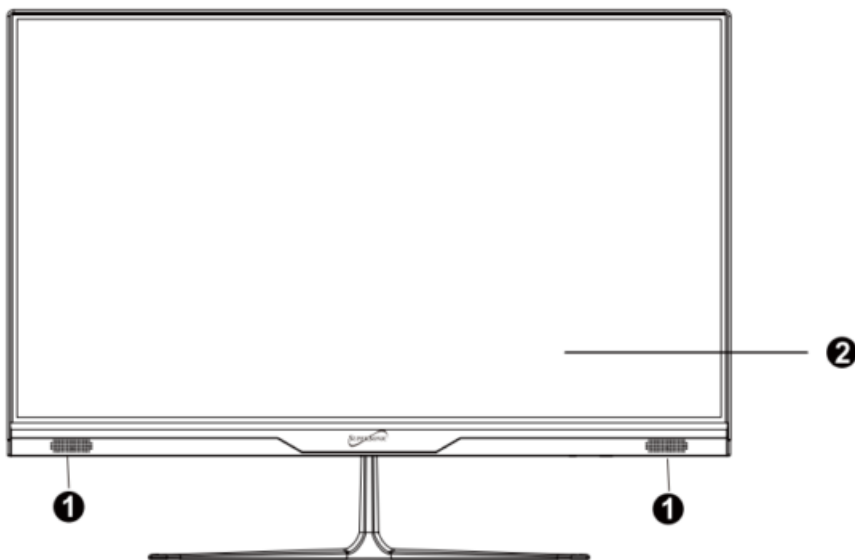
- 1 Precautions before use
- 2 Descriptions
- 3 Equipment start-up
- 4 Precautions
- 5 Introduction to Desktop
- 6 Basic Operations
- 7 Specifications
- 8 Warranty
- 9 FCC Statement
- 10 Documents / Resources
 - 10.1 References

Precautions before use

- Avoid obstruction of the air inlet and outlet.
- The power indicator on the bottom of the all-in-one will remain lit after the power is turned on.
- The system will start up when it is used for the first time. Do not force power off to avoid data loss or damage to the system.

Descriptions

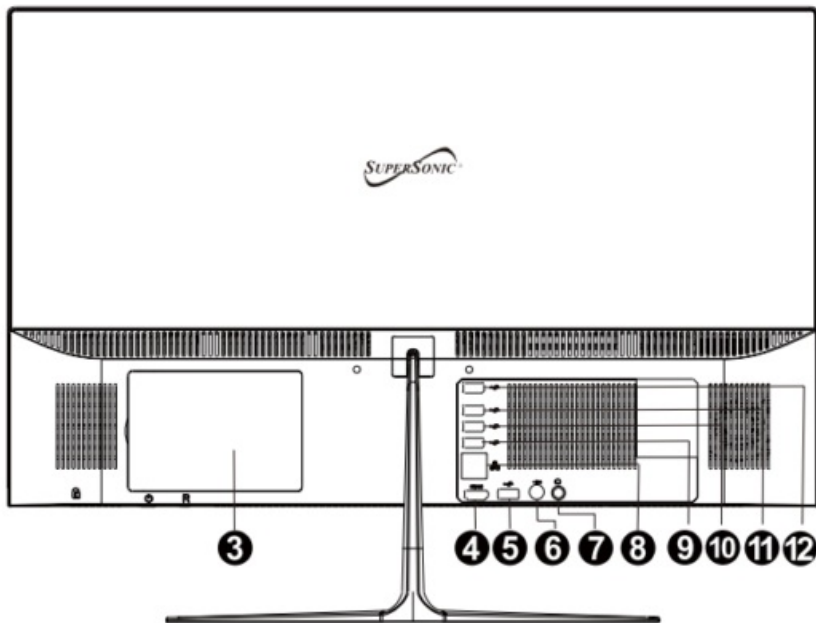
1. Speakers
2. Screen



3. 2.5" disk slot
4. HDMI
5. USB 2.0
6. DC
7. Minijack 3.5mm
8. RJ45
9. USB 3.0
10. USB 3.0

11. USB 3.0

12. USB 3.0

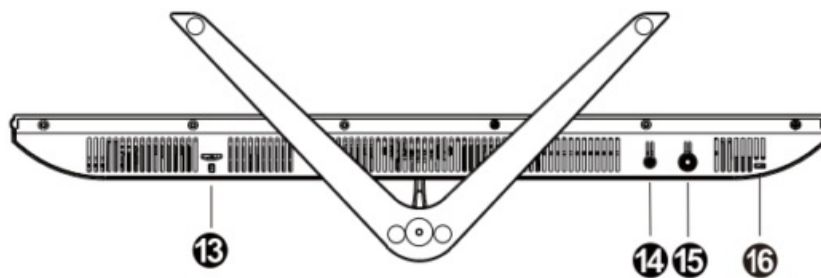


13. TF card

14. Reset button

15. Power button

16. Kensington lock

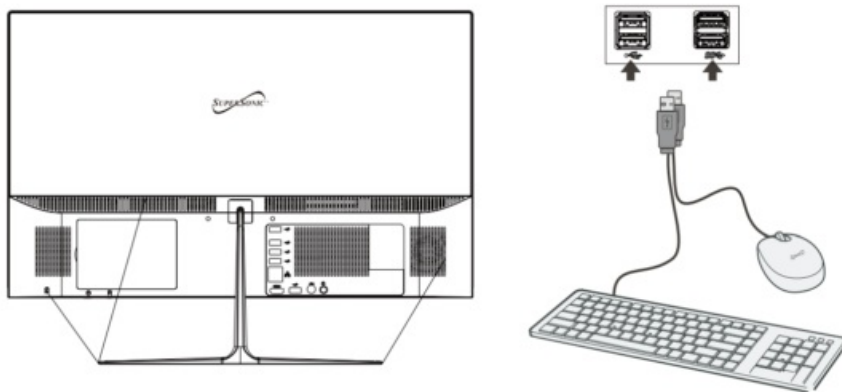


Equipment start-up

Warning: When connecting the keyboard and mouse to the all in one, make sure that the computer and other equipment are in the off state, do not switch them on.

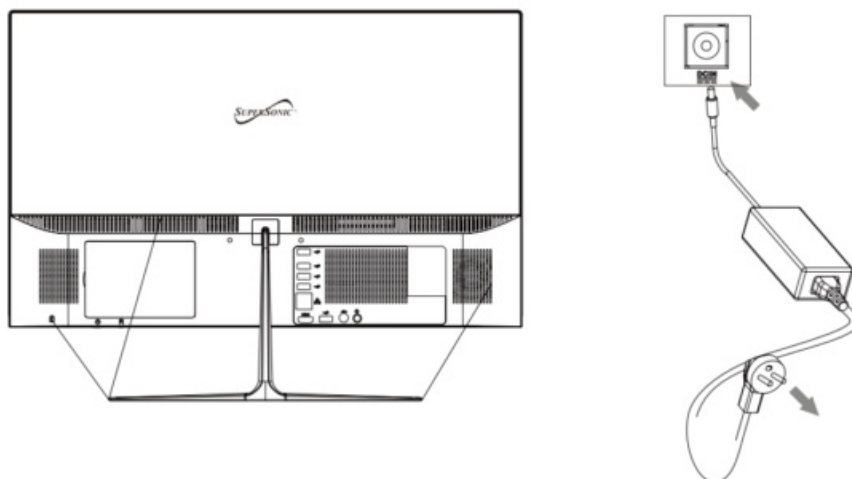
Connect the keyboard and mouse

Connect the keyboard and mouse as shown in the picture to the specified keyboard and mouse interface of the all in one.



Connect the all in one to the power outlet

Plug the power cord into the equipment plug and the other end into a 100~240V AC outlet and press the power button.



Precautions

Please follow the following safety precautions when using your device.

Do not use power cords, damaged plugs or loose plugs. Do not bend or damage the power cord. Do not touch the power cord with wet hands or pull the cord to disconnect the charger.

Do not use the device while it is charging or touch it with wet hands.

Do not hit or drop the charger and do not charge the battery with chargers that are not approved by the manufacturer.

Do not use your device during an electrical storm. Handle and discard batteries and chargers with care.

Do not handle damaged lithium ion batteries or that show leakage.

Do not use the device near a pacemaker. If possible, avoid using it at a distance inferior to 15 cm, because the device can interfere with the pacemaker.

Do not use the device in a hospital or near medical equipment that can be interfered by radio frequency.

If you use medical equipment always make sure they are protected against radio frequencies. If you use a hearing aid, let the manufacturer know to obtain further information about interference.

In potentially explosive environments, turn off the device.

Always respect the rules, instructions and warning signs

Do not use the device in or near other flammable chemicals refueling points (service stations) and / or explosives

Do not store or transport flammable liquids, gases or explosive materials in the same compartment as the device, its parts or accessories

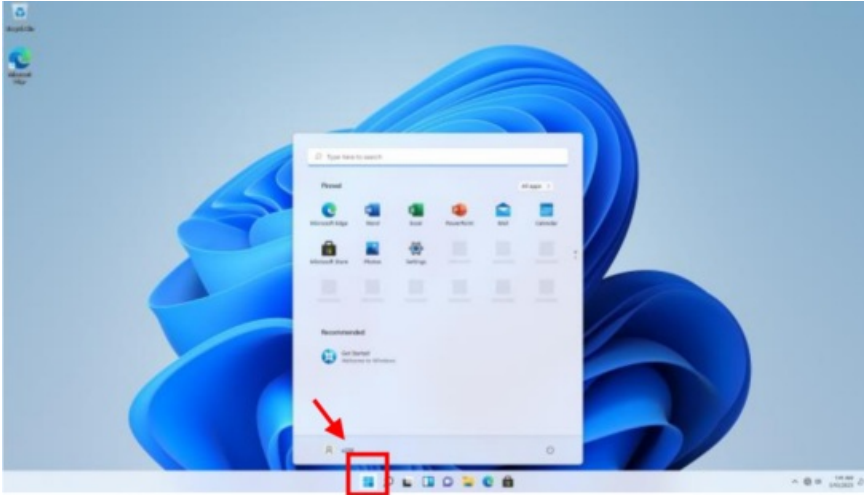
If you want to charge the device, you must install an easily accessible power outlet.

The images in this manual are only for information purposes and may differ from the actual product.

For more information, visit <http://www.supersonicinc.com/>

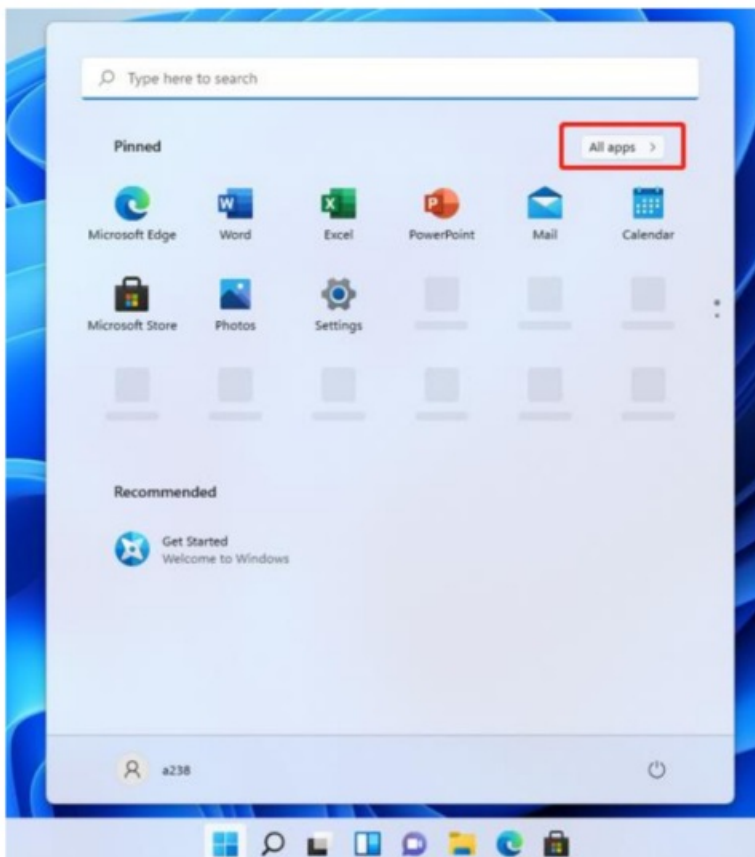
Introduction to Desktop

1. **Windows 11 Startup Menu:** On the start screen, you can see many application programs you can select the programs you need to open. You will need to log on to your Microsoft account for some application program to completely run.

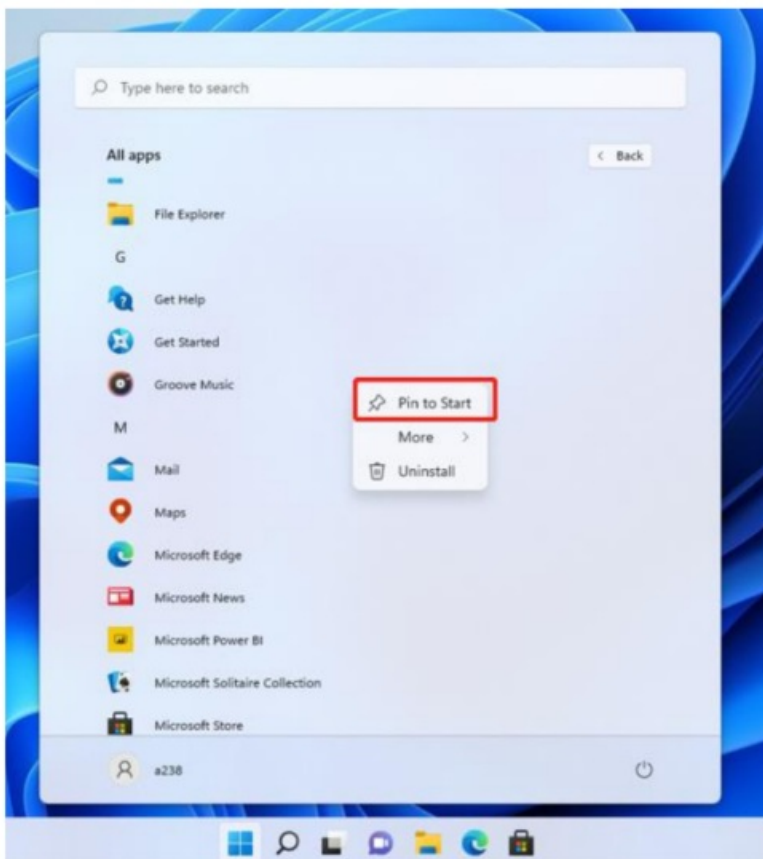


2. Introduction to app Interface

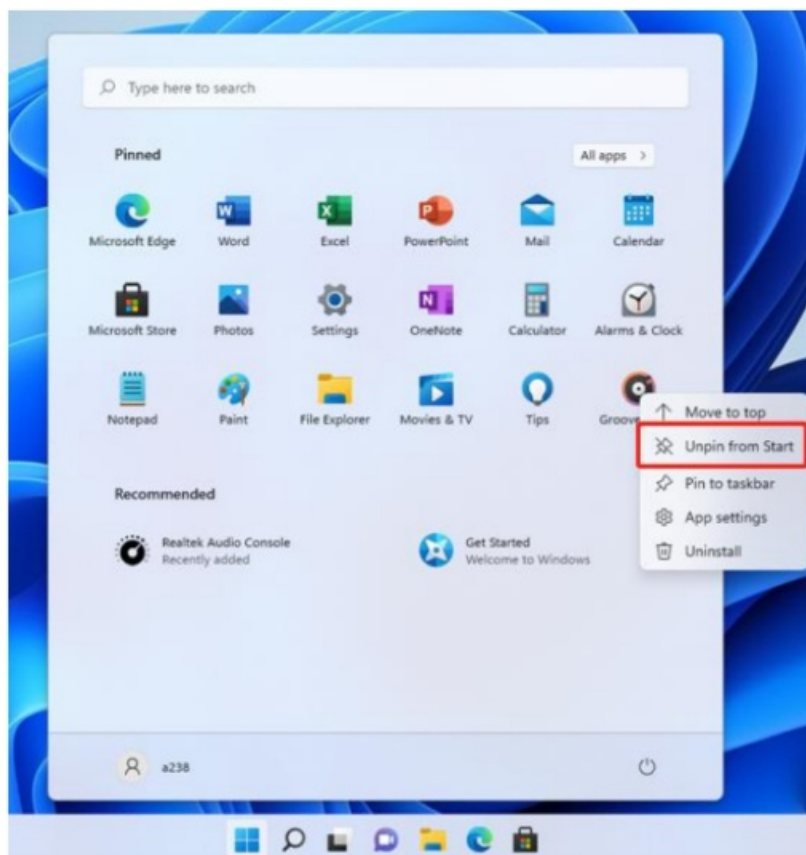
Besides the application programs already fixed on the start screen, you can also add and start other software application programs.



If you want to fix more application programs on the start interface, see the operation in the figure below, (1) Right click the properties icon (2) Select “pin to start”.

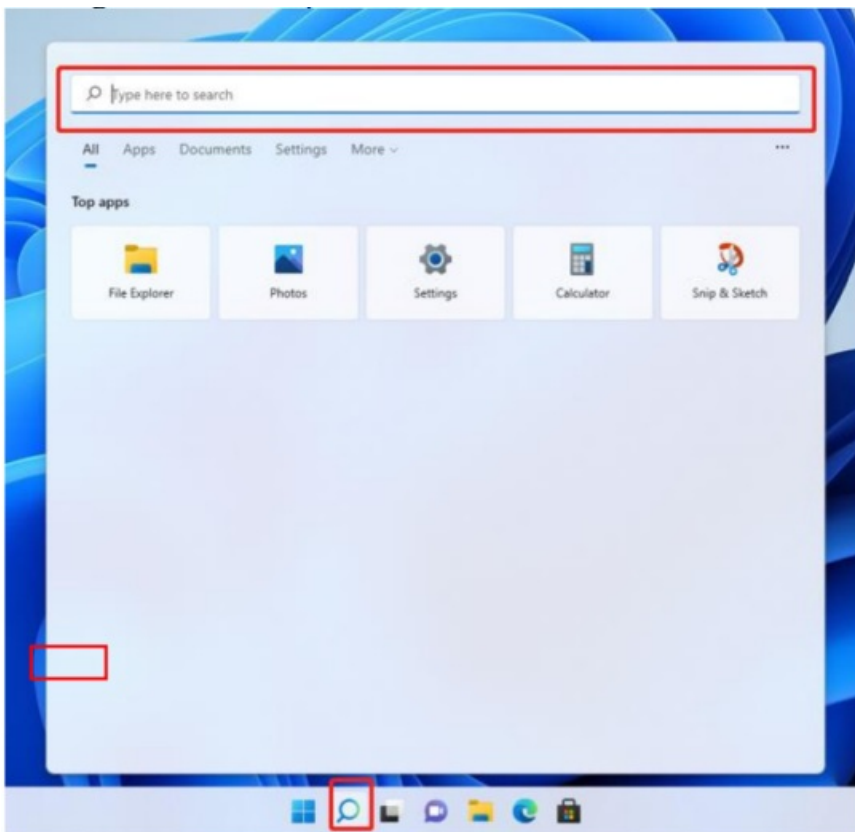


3. Conversely, if you want to cancel or delete a certain application in the start screen, (1) Right click the properties icon (2) Select “Unpin from start”.



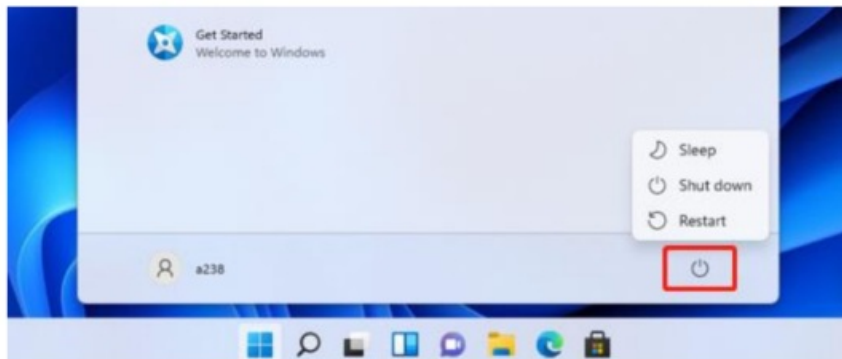
4. Search menu

Use the External Keyboard connected to your device and Type on the Search box for Apps, Settings, Documents, photos, Music, WEB, etc...


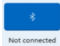




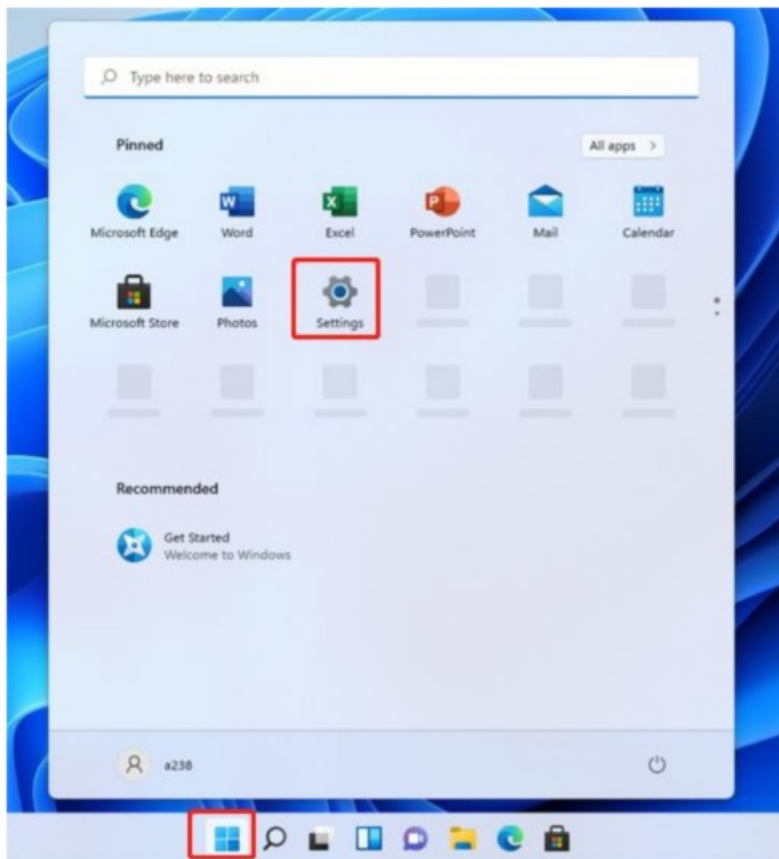
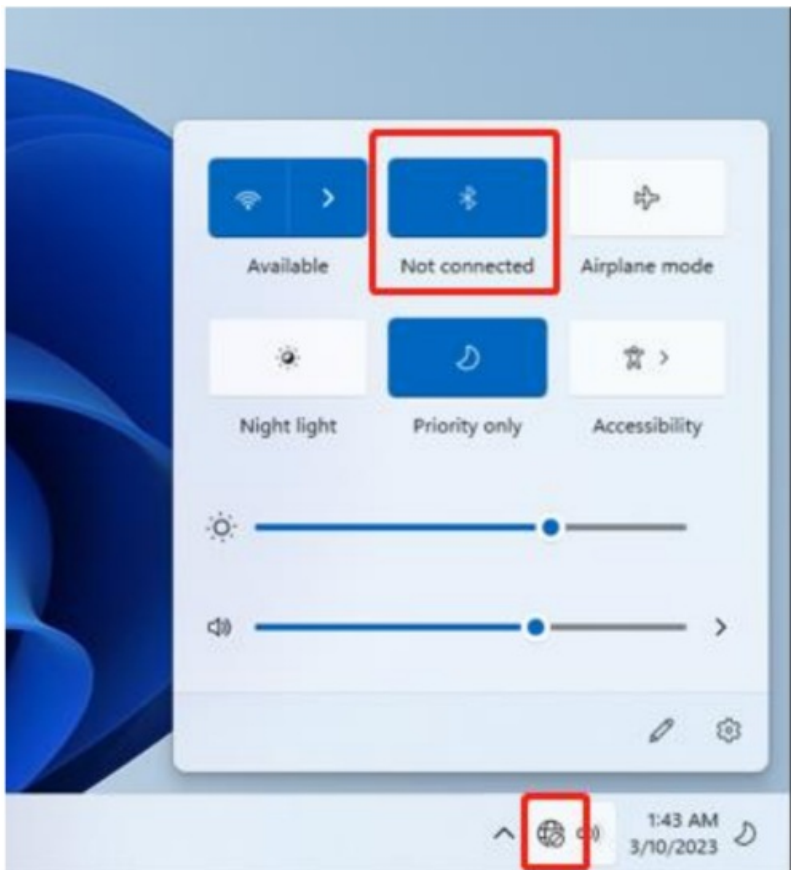
Basic Operations

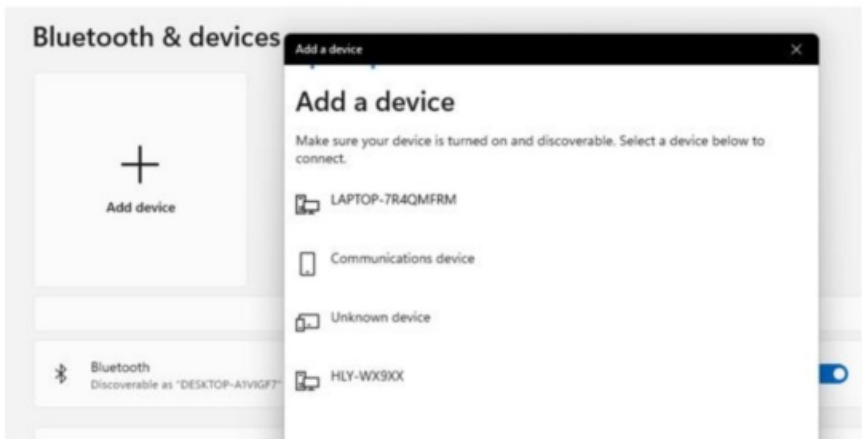
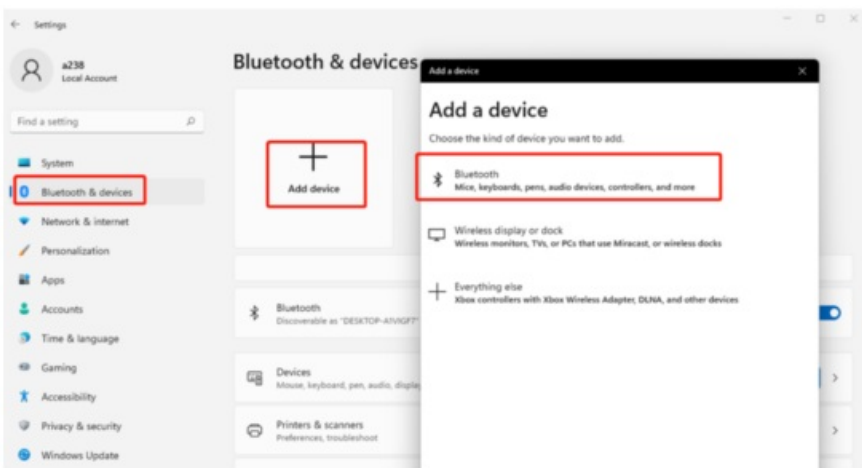
1. Sleep, restart and power off




2. Bluetooth connect

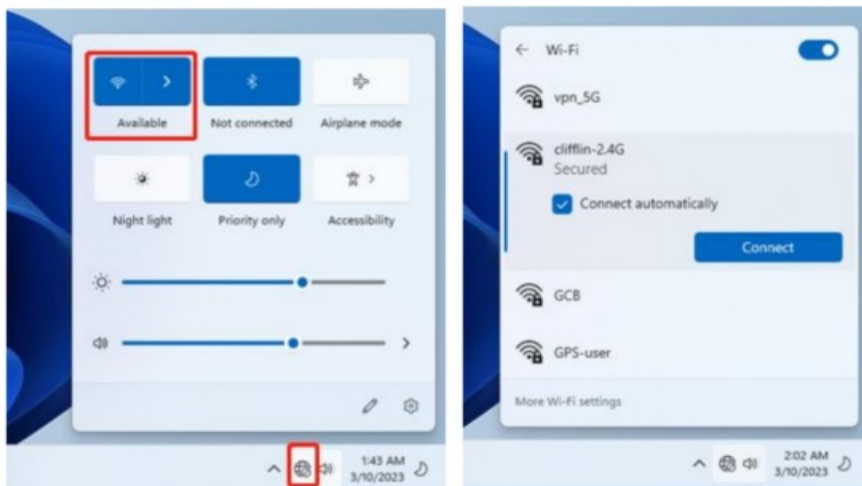
Click the  then click the  to open the Bluetooth. Click the  then click "Settings"; enter to the setting interface, then click  Bluetooth & devices to search other devices.





3. WIFI Connect

Click the  to open the Wi-Fi, and then choose the Wi-Fi you need to connect, enter the password.

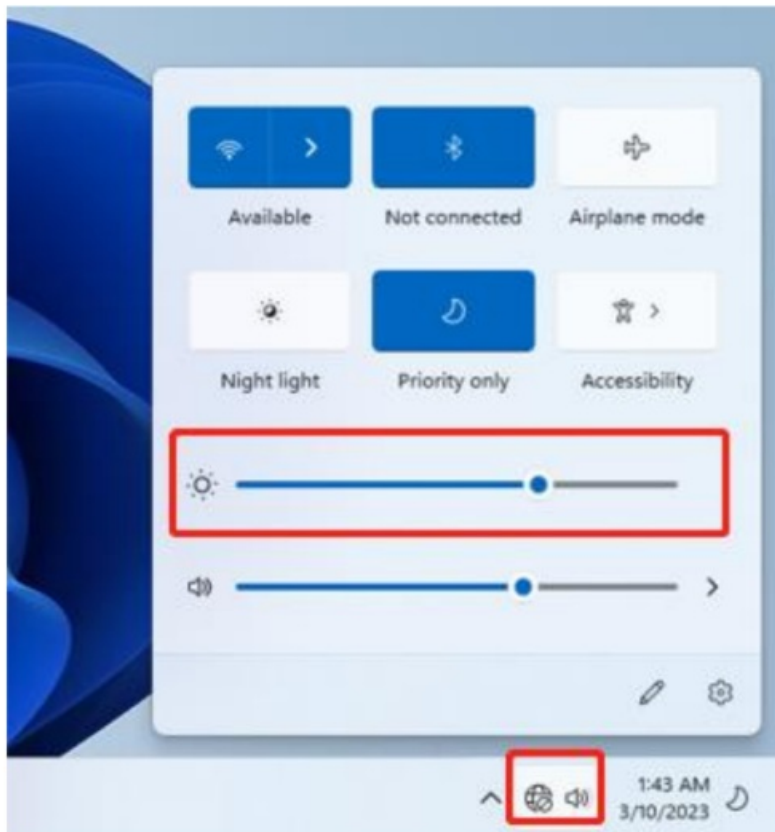


4. Display Brightness and Power management

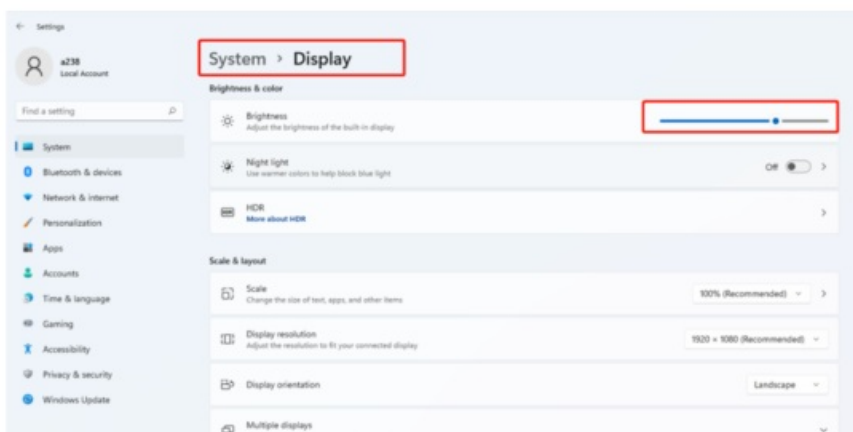
Display brightness:

There are two ways to change brightness.

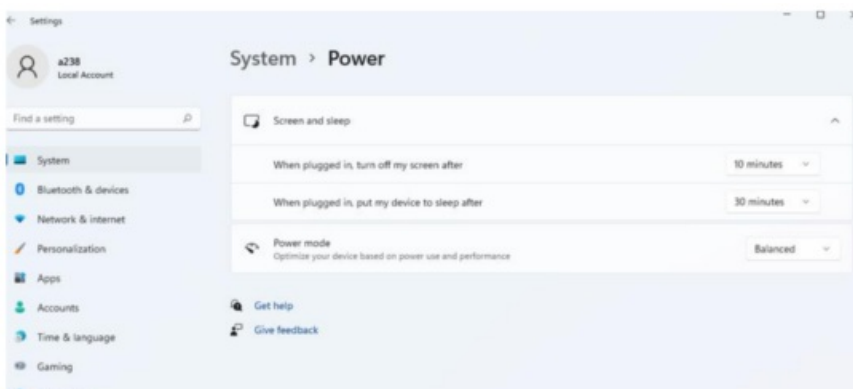
A. Click icon on the taskbar and click the sun icon to switch the brightness.



B. Settings>System>Display>Brightness



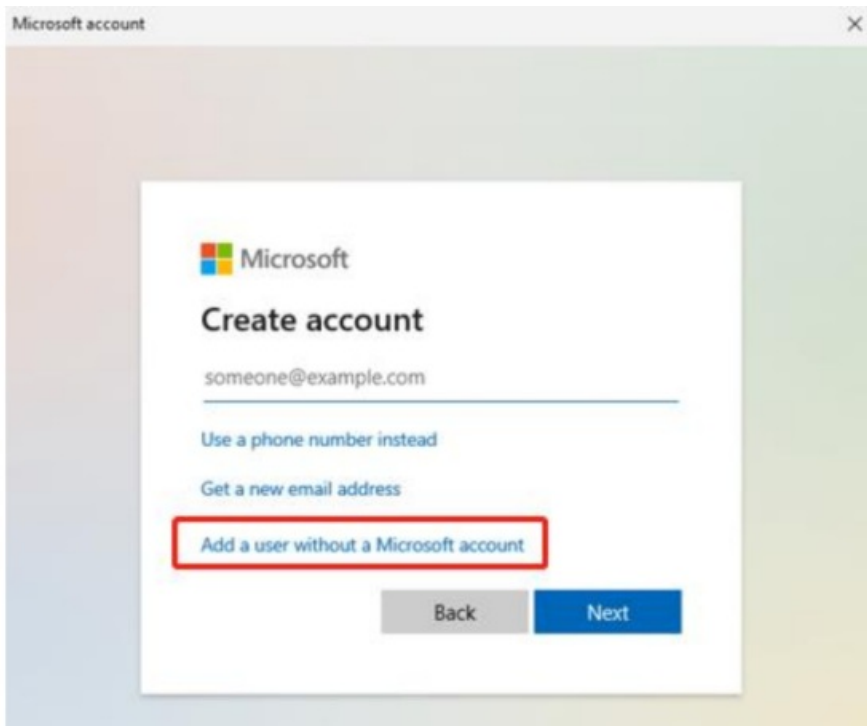
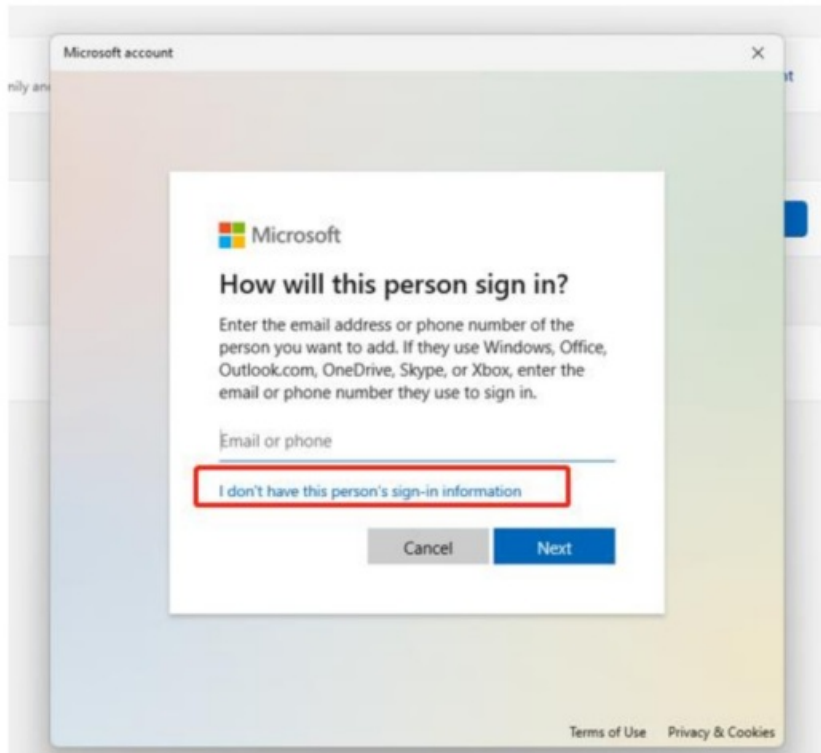
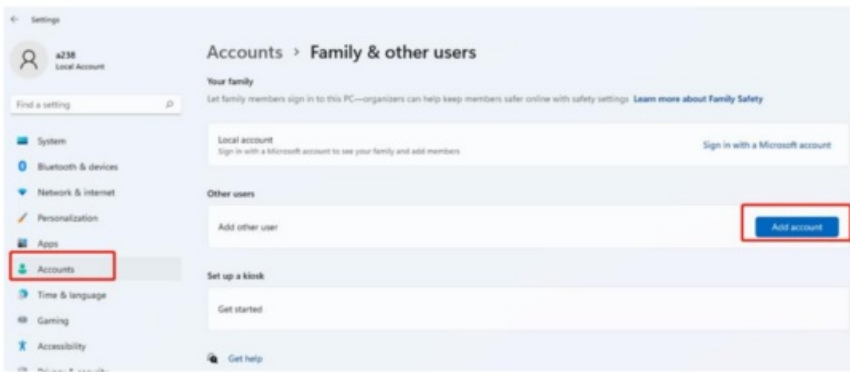
Power management: Settings>system>Power



5. Add an account

Add a location account:

Settings>Accounts>Family Other users Click “Add account” at “Add other user”and fill in a new account following the guild.



Microsoft account

Create a user for this PC

If this account is for a child or teenager, consider selecting **Back** and creating a Microsoft account. When younger family members log in with a Microsoft account, they'll have privacy protections focused on their age.

If you want to use a password, choose something that will be easy for you to remember but hard for others to guess.

Who's going to use this PC?

User name

Make it secure.

Enter password

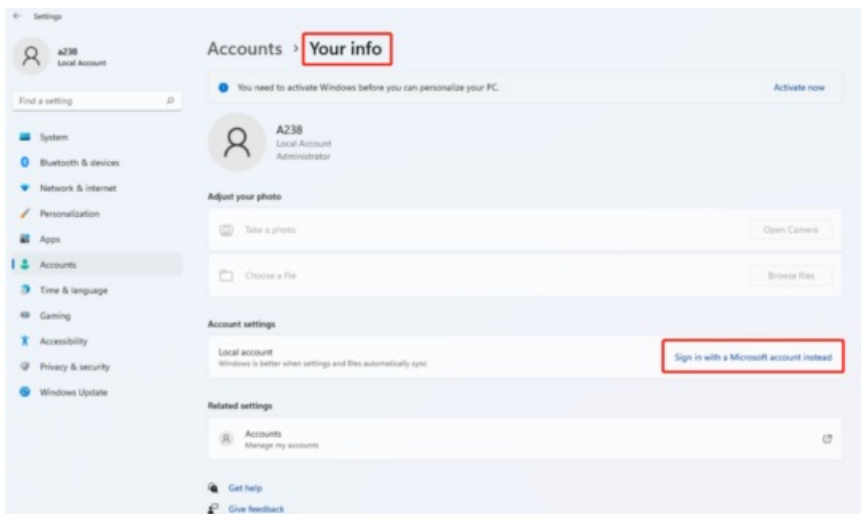
Re-enter password

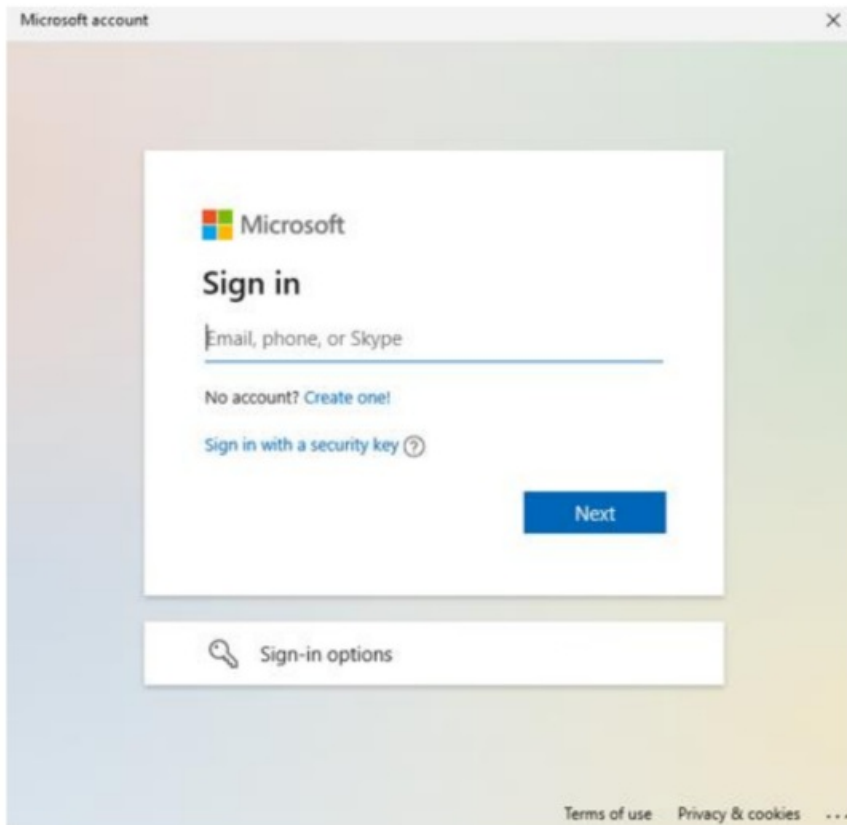
Next

Back

Add a Microsoft account:

Settings>Accounts>your info Click “sign in with a Microsoft account instead” and fill in a Microsoft account following the guild.

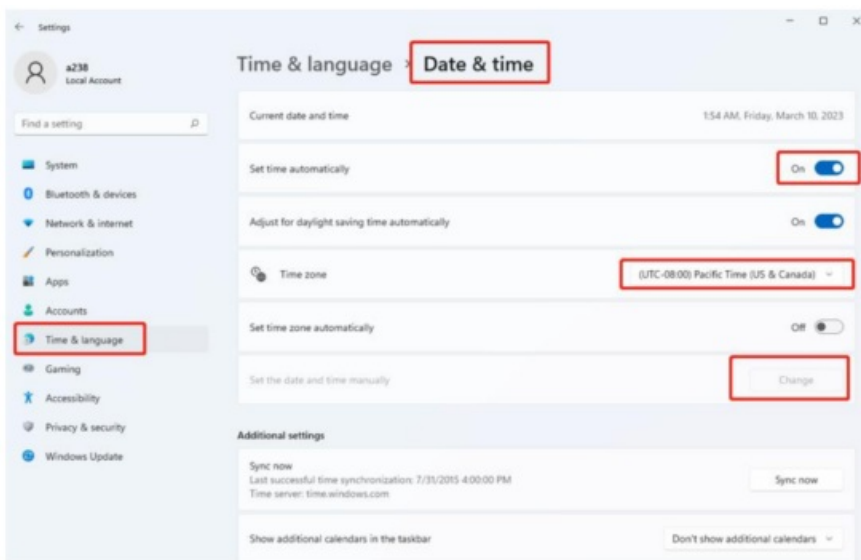




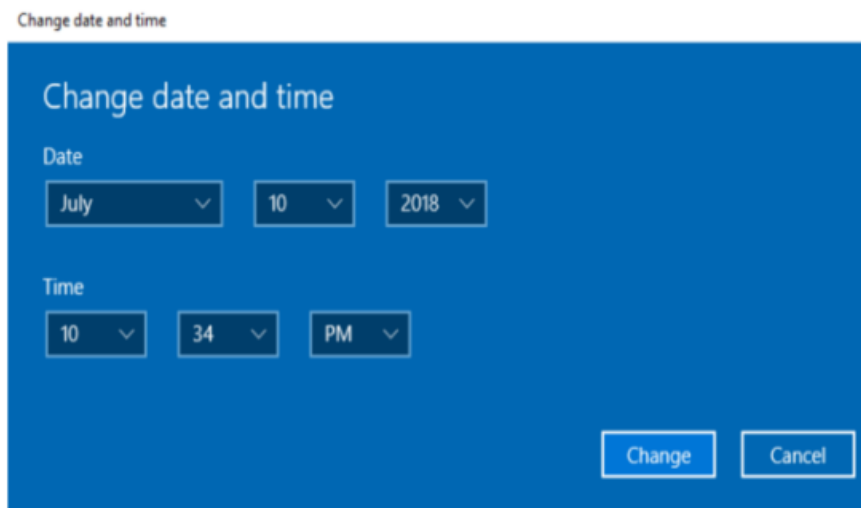
6. Adjust the date and time

Date and time:

Settings>Time&Language>Date&time “Set time automatically” option is on by default. The time will be set automatically when Internet is connected via wifi. You can change the time zone through “time zone” option.

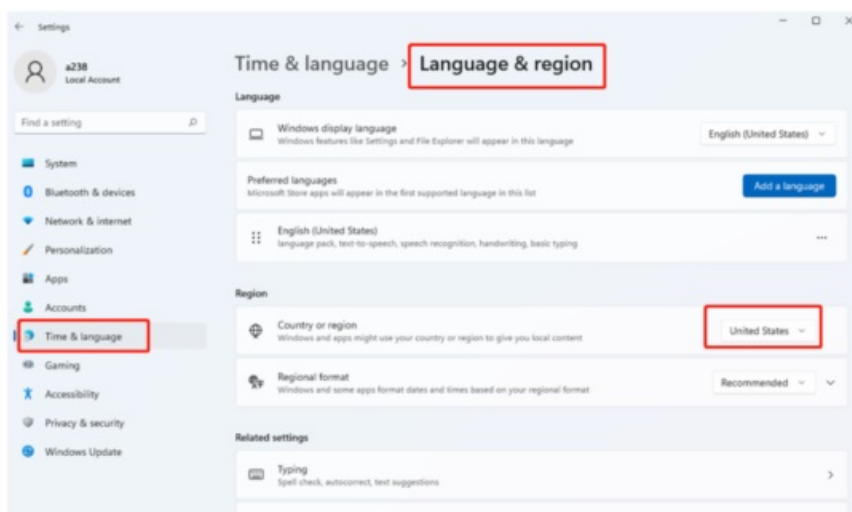


If you need to set the time by yourself, please turn off “Set time automatically” option and the “change” option will be active.



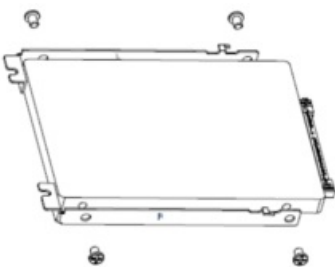
Region:

Settings>Time&Language> Language&Region

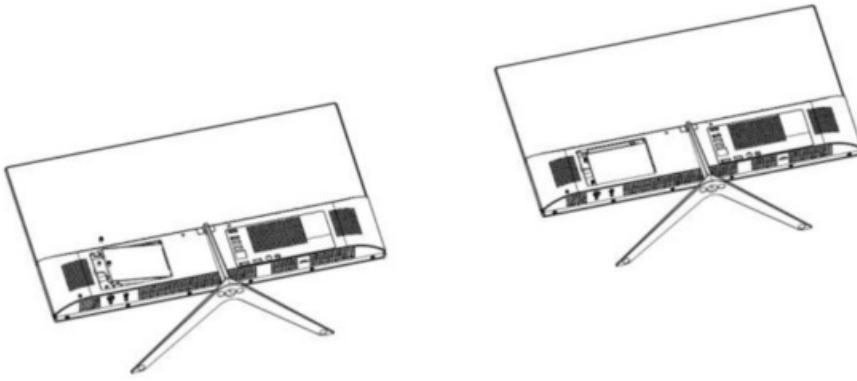


7. Install the 2.5" disk

Before install the 2.5" disk, the device must power off. follow the steps as below to install the 2.5" disk.



- The disk is facing up, with the R bracket at the bottom and the L Bracket at the top.
- Fix the R bracket and L bracket to the lower part of the disk with four CM3 * 4 screws, note that the bend faces up when fixed.

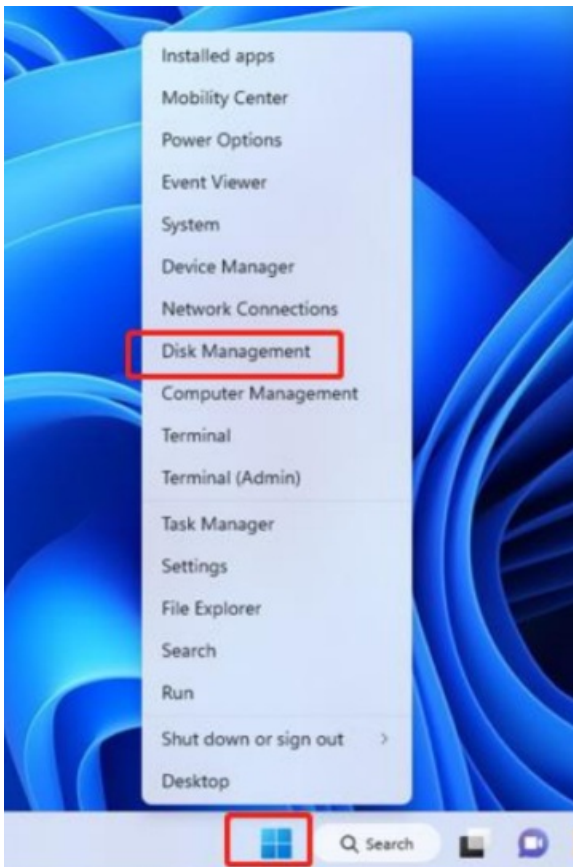


c. Insert the mounted disk into the interface.

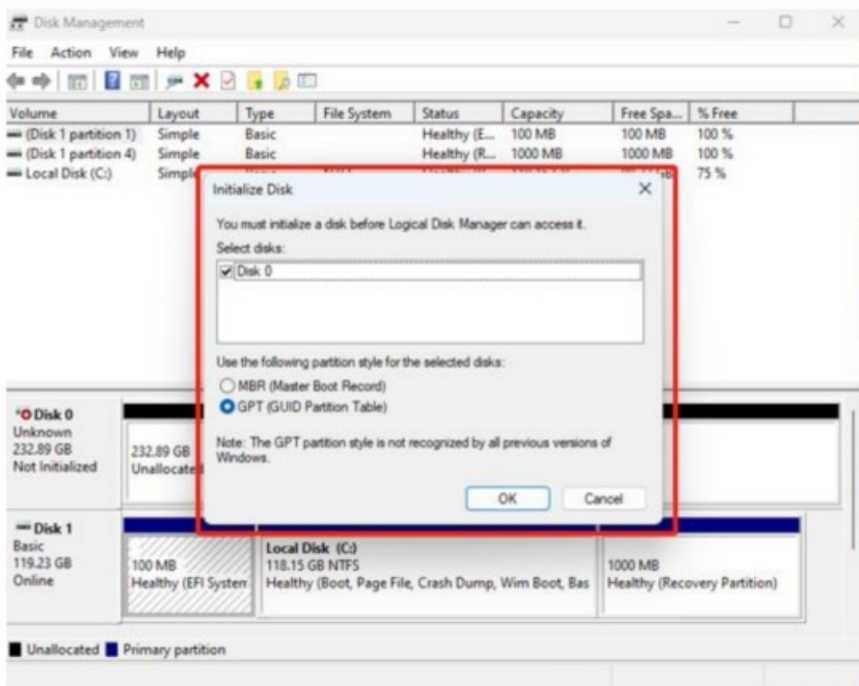
d. Use two PA2.5 * 5 screws to secure the hard disk holder to the rear housing.

If the disk is used for the first time, you need to follow the steps as below.

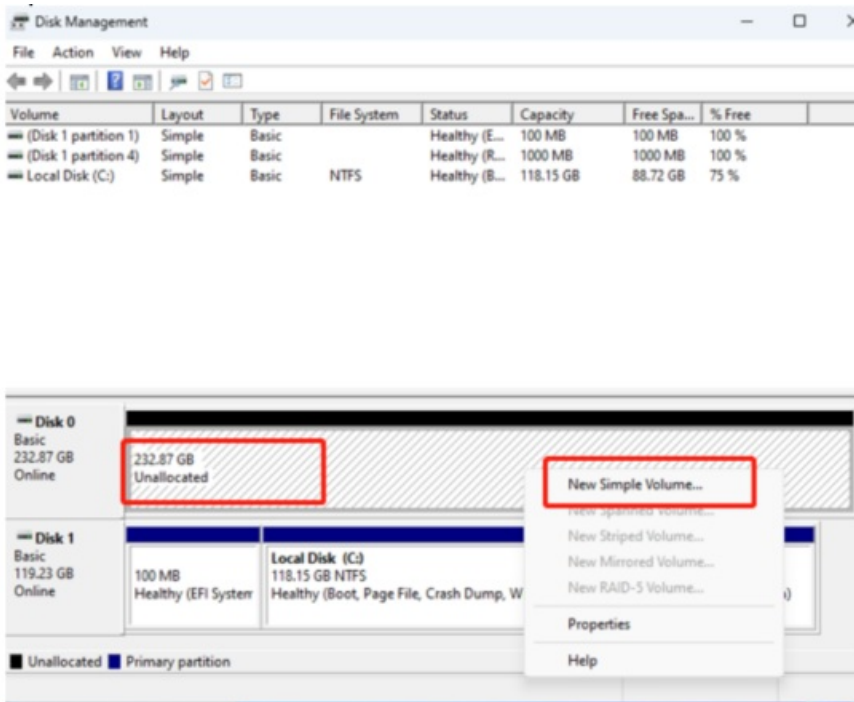
a. Right click the Start menu and select “Disk Management”

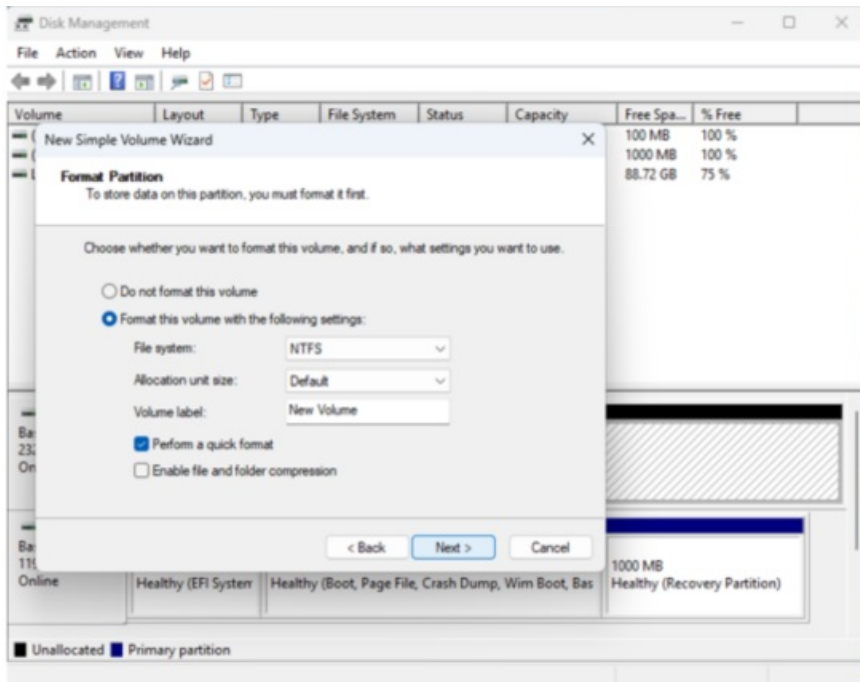
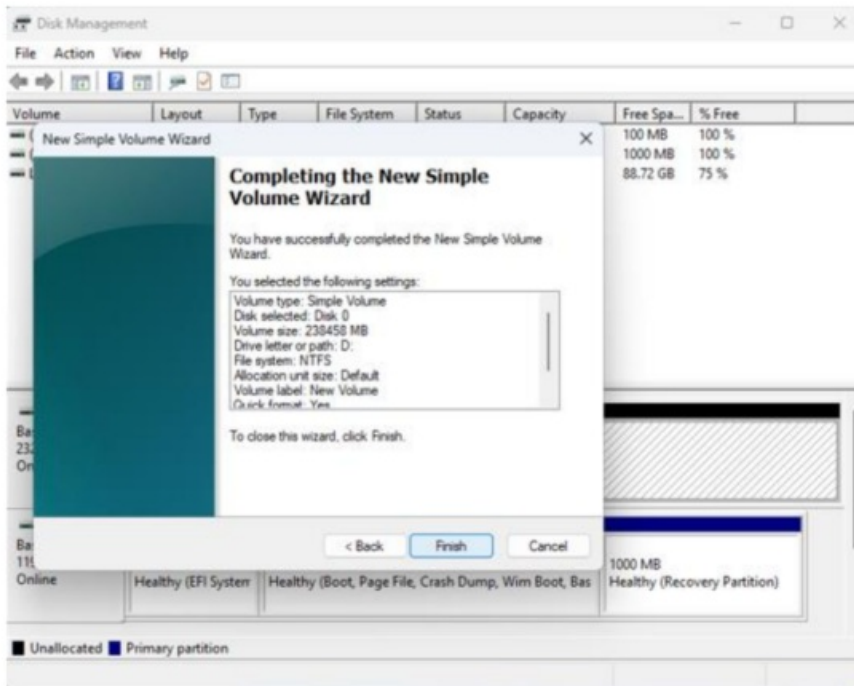


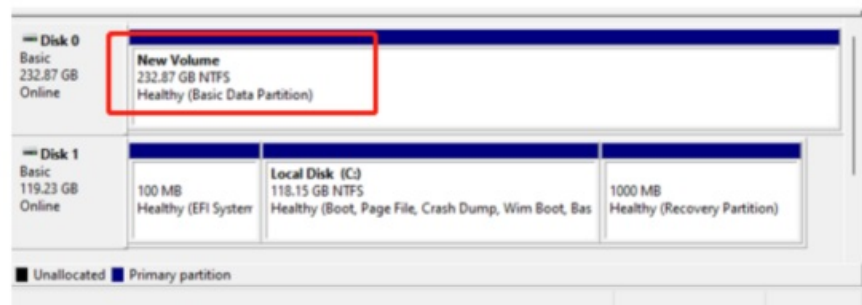
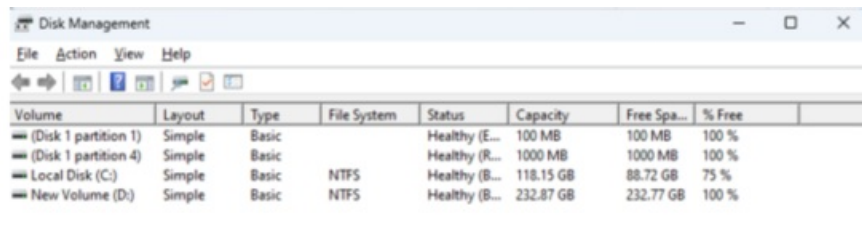
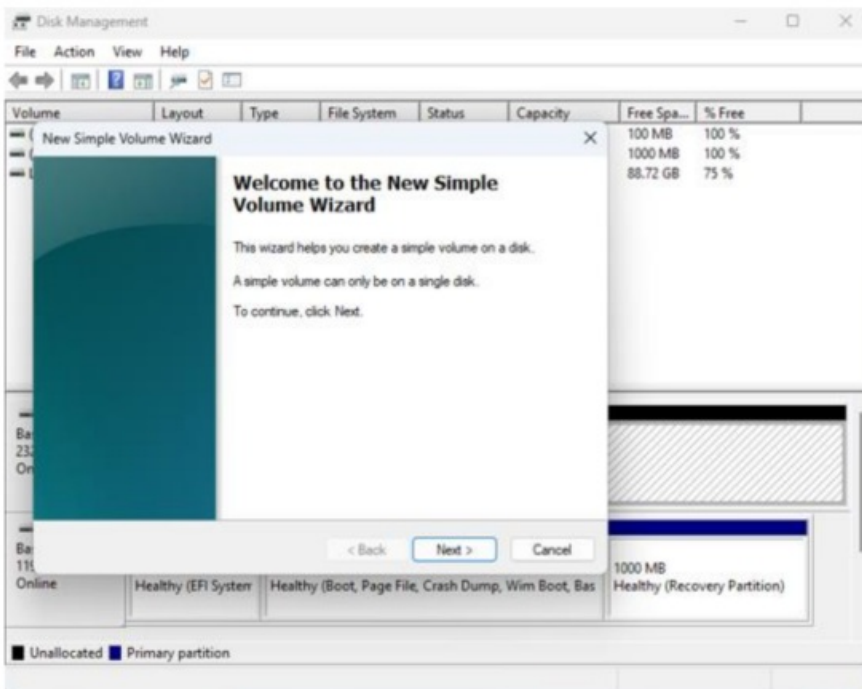
b. The window of Initialize Disk will appear automatically. Click OK and the disk will be initialized.



c. Right click on the new disk ,select “New Simple Volume” and follow the steps.



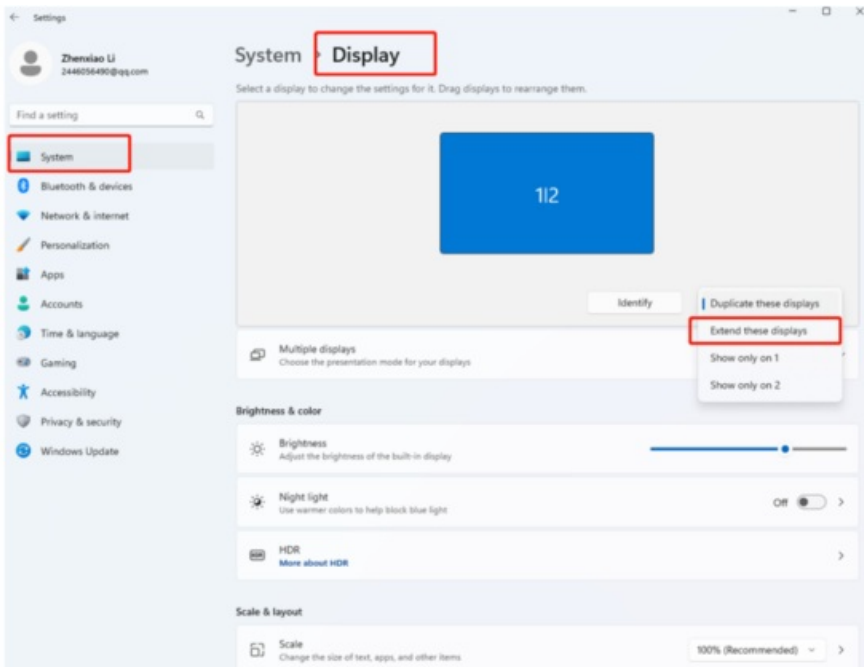




8. Connecting another monitor as 2nd Screen.

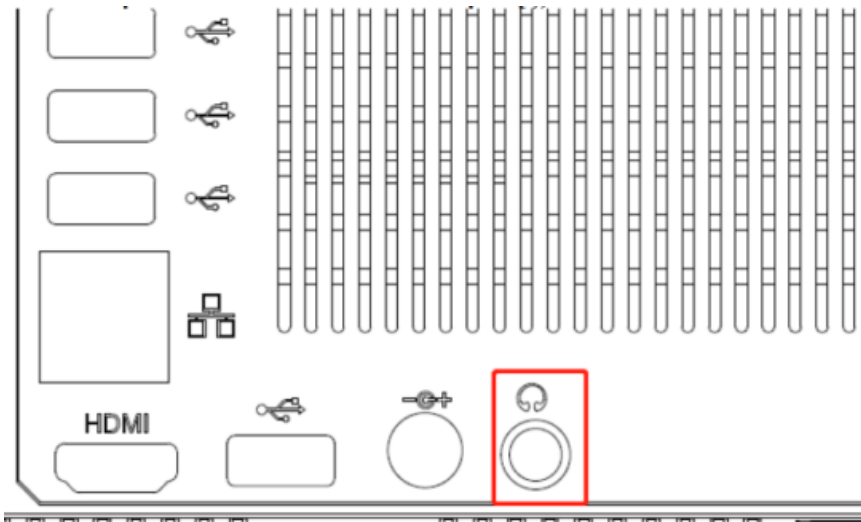
Connect another monitor to the device through the HDMI interface.

Open settings-system-Display and select "Extend these displays" and then the other monitor will show as 2nd Screen.



9. Connecting Speakers

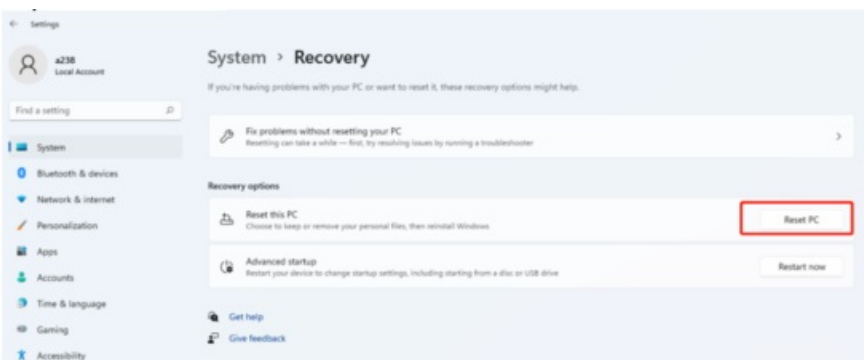
a. If the speaker has a 3.5 mm plug, insert it to the headphone hole.

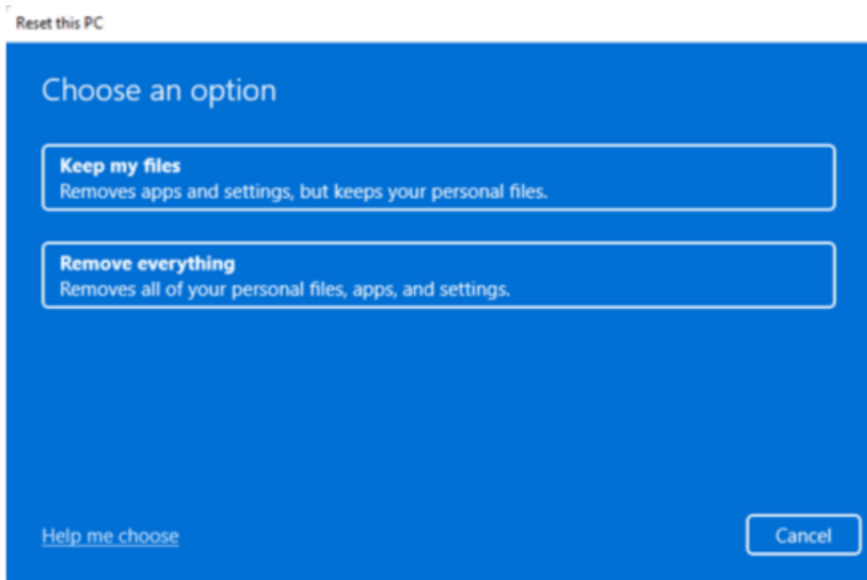


b. If the speaker has Bluetooth, connect it to the device through Bluetooth following the steps as above “Bluetooth connect”.

10. Reset the PC

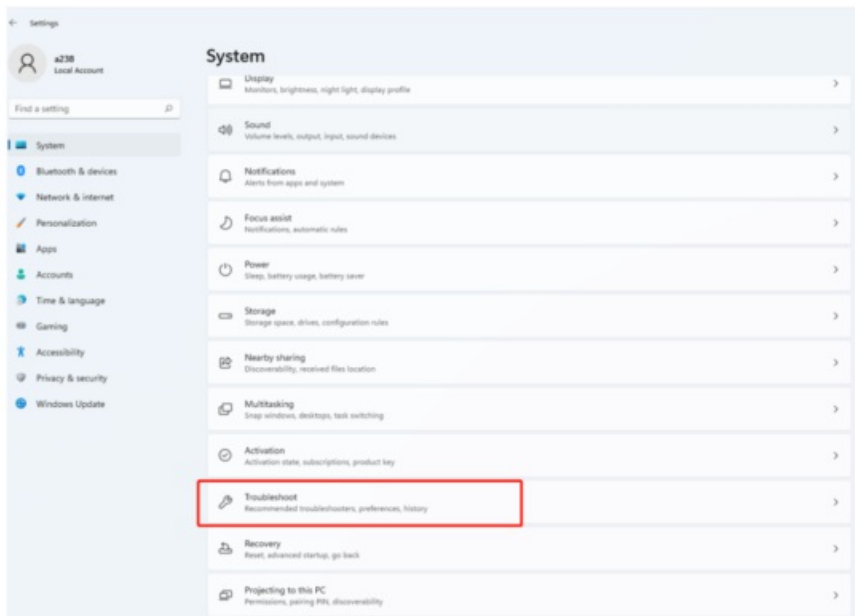
Settings>system>Recovery Click “Reset PC” and select one option you want. Then follow the guiding steps to reset this PC.





11. Troubleshoot

You can find almost troubleshoot tips in Settings>system>Troubleshoot



Specifications

| | |
|--------------------------|--|
| Item | SC-4424AIO |
| Display | 1920×1080 VA |
| OS | Windows 11 |
| Input method | USB or bluetooth Keyboard and mouse |
| DDR RAM | 8GB |
| Capacity | 256GB |
| External Capacity | TF-CARD, up to 128GB |
| Audio | AAC,FLAC,MP3,OGG,WAV,etc...(some need third party software support) |
| Video | 3GP,MOV,MP4,MPG,AVI,etc...(some need third party software support) |
| E-book | Support |
| Wireless network | Support WIFI |
| Language | English (other languages need to be downloaded from Internet) |
| OTG | Support |
| Temperature | -20°C to 60 |

Warranty

Basic Warranty Statement

Supersonic Inc. ("Supersonic") warrants this product to the original purchaser ONLY, to be free from defects in materials and workmanship under normal use, for ninety (90) DAYS from the date of original purchase. Proof of purchase (receipt) required.

Please visit <http://www.supersonicinc.com/warranty> for additional information.

FCC Statement

This equipment has been tested and found to comply with the limits for a Class B digital device, pursuant to part 15 of the FCC Rules. These limits are designed to provide reasonable protection against harmful interference in a residential installation. This equipment generates, uses and can radiate radio frequency energy and, if not installed and used in accordance with the instructions, may cause harmful interference to radio communications.

However, there is no guarantee that interference will not occur in a particular installation. If this equipment does cause harmful interference to radio or television reception, which can be determined by turning the equipment off and on, the user is encouraged to try to correct the interference by one or more of the following measures:

- Reorient or relocate the receiving antenna.
- Increase the separation between the equipment and receiver.
- Connect the equipment into an outlet on a circuit different from that to which the receiver is connected.
- Consult the dealer or an experienced radio/TV technician for help.

Caution: Any changes or modifications to this device not explicitly approved by manufacturer could void your authority to operate this equipment.


This device complies with part 15 of the FCC Rules. Operation is subject to the following two conditions: (1) This device may not cause harmful interference, and (2) this device must accept any interference received, including interference that may cause undesired operation.

RF Exposure Information



This equipment complies with FCC radiation exposure limits set forth for an uncontrolled environment. This equipment should be installed and operated with minimum distance 20cm between the radiator and your body.



Documents / Resources

| | |
|--|---|
|  | <p>SUPERSONIC SC-5524AIO All in One Desktop Computer [pdf] User Manual 2AC5R-SC-5524AIO, 2AC5RSC5524AIO, sc 5524aio, SC-5524AIO All in One Desktop Computer, SC-5524AIO, All in One Desktop Computer, Desktop Computer, Computer</p> |
|--|---|

References

-  [Supersonic Inc](#)
-  [Warranty – Supersonic Inc](#)
- [User Manual](#)

[Manuals+](#), [Privacy Policy](#)

This website is an independent publication and is neither affiliated with nor endorsed by any of the trademark owners. The "Bluetooth®" word mark and logos are registered trademarks owned by Bluetooth SIG, Inc. The "Wi-Fi®" word mark and logos are registered trademarks owned by the Wi-Fi Alliance. Any use of these marks on this website does not imply any affiliation with or endorsement.