



SUPERSONIC GIT-1 Remote Control Instruction Manual

[Home](#) » [Supersonic](#) » SUPERSONIC GIT-1 Remote Control Instruction Manual 

SUPERSONIC GIT-1 Remote Control Instruction Manual



WARNING



Moving Door can cause serious injury or death.

- Wall Console must be mounted in sight of door, at least 5 feet above floor and clear of moving door parts.
- Keep people clear of opening while door is moving.
- Do NOT allow children to play with the Remote or door opener

If safety reverse does not work properly:

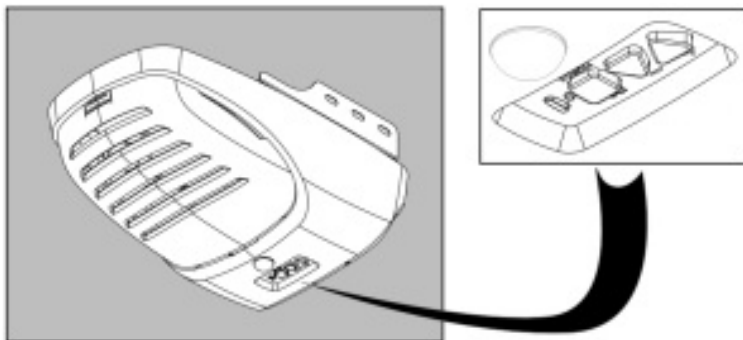
- Close door then disconnect opener using the manual release handle.
- Do NOT use Remote or door opener.
- Refer to Door and Door Opener Owner's Manuals before attempting any repairs.

Contents

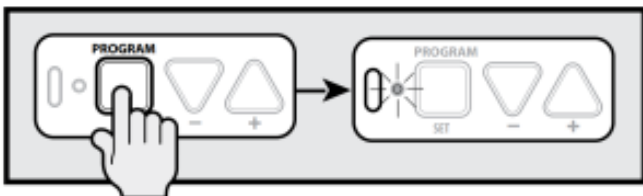
- [1 Putting Opener into Programming Mode](#)
- [2 Programming a Remote to your Opener](#)
- [3 Lost or Stolen Remote/Erasing all Remotes](#)
- [4 Battery Replacement](#)
- [5 FCC Caution](#)
- [6 Documents / Resources](#)
- [7 Related Posts](#)

Putting Opener into Programming Mode

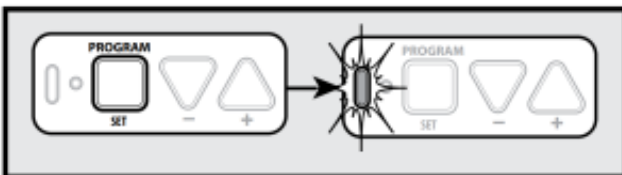
New Openers



1. Press and hold the program button until the round LED turns blue, then release.

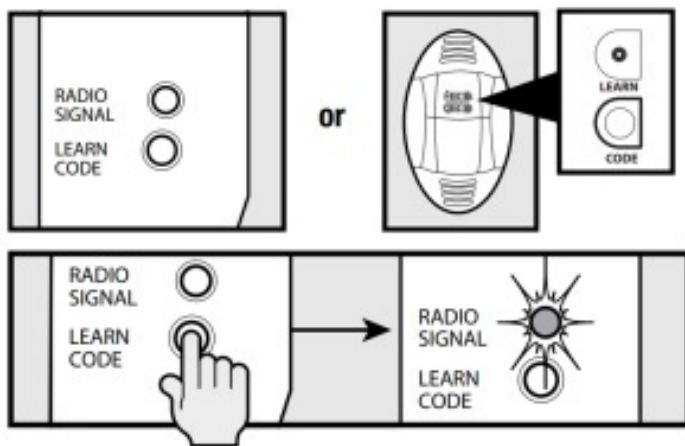


2. The round LED will go out and the long LED will begin flashing purple



OR

Openers and External Receivers Manufactured between 1995 to 2011

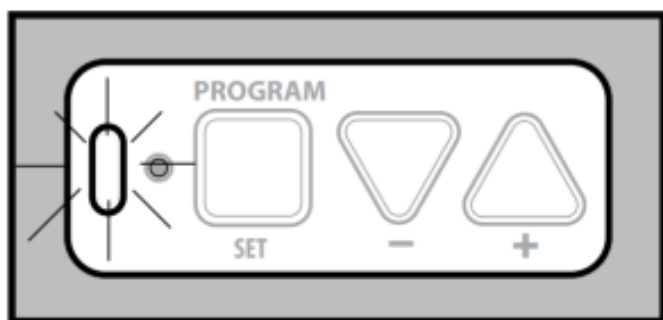


1. Press & Release Learn Code button once. The red LED will begin to flash.

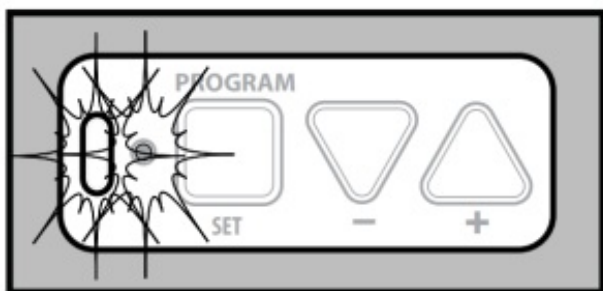
Programming a Remote to your Opener

NOTE: Once in programming mode, you will have approximately 30 seconds to perform this step.

Note: While programing remote buttons, stand at least 5 feet away from the opener. This ensures you have proper communication between the remote and the opener.



1. Slowly press and release the remote button of your choice two times. The opener LEDs will flash and go off, indicating you have successfully programmed your remote.



2. Press and release the same button a third time and door will open or close. It is possible to press the remote button too quickly or lightly. If the LEDs do not go OFF, press the remote button several more times to achieve confirmation.

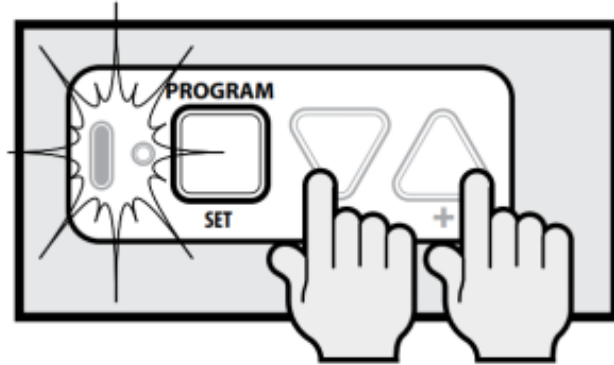
Lost or Stolen Remote/Erasing all Remotes

New Openers

1. Press and hold the program button until the round LED turns blue, then release.



2. Press and hold the Up(+) Down (-) buttons at the same time, until the both LEDs flash blue and go OFF.



Openers and External Receivers Manufactured between 1995 to 2011

To erase all remote devices from all other types of Genie® openers, Press and hold the Learn Code Button until the LED stops blinking.

Start at step 1 to reprogram your remotes.

NOTE: Clearing remote control memory from the power head will clear ALL programmed remotes and keypads. Your opener will no longer recognize any signal from any remote device, including a missing remote device.

Battery Replacement

Replace remote battery with CR2032 coin cell battery.

1. Open the remote case using a washer or coin that fits into the slot at the top of the remote.
2. Replace battery. Match battery polarity symbols inside battery housing.
3. Align components and snap case closed.

FCC Caution

This device complies with part 15 of the FCC Rules. Operation is subject to the following two conditions: (1) This device may not cause harmful interference, and (2) this device must accept any interference received, including interference that may cause undesired operation.

Any Changes or modifications not expressly approved by the party responsible for compliance could void the user's authority to operate the equipment.

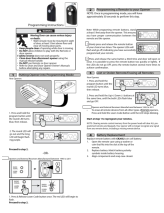
Note: This equipment has been tested and found to comply with the limits for a Class B digital device, pursuant to part 15 of the FCC Rules. These limits are designed to provide reasonable protection against harmful interference in a residential installation. This equipment generates uses and can radiate radio frequency energy and, if not installed and used in accordance with the instructions, may cause harmful interference to radio communications. However, there is no guarantee that interference will not occur in a particular installation. If this equipment does

cause harmful interference to radio or television reception, which can be determined by turning the equipment off and on, the user is encouraged to try to correct the interference by one or more of the following measures:

- Reorient or relocate the receiving antenna.
- Increase the separation between the equipment and receiver.
- Connect the equipment into an outlet on a circuit different from that to which the receiver is connected.
- Consult the dealer or an experienced radio/TV technician for help.

The device has been evaluated to meet general RF exposure requirement. The device can be used in portable exposure condition without restriction.

Documents / Resources

	<p>SUPERSONIC GIT-1 Remote Control [pdf] Instruction Manual</p> <p>GIT-1, GIT1, 2AQXW-GIT-1, 2AQXWGIT1, GIT-1 Remote Control, GIT-1, Remote Control</p>
---	---