



Supersonic Gate Door Automation 878MAX Universal Wireless Keypad Instruction Manual

[Home](#) » [Supersonic Gate Door Automation](#) » [Supersonic Gate Door Automation 878MAX Universal Wireless Keypad Instruction Manual](#) 

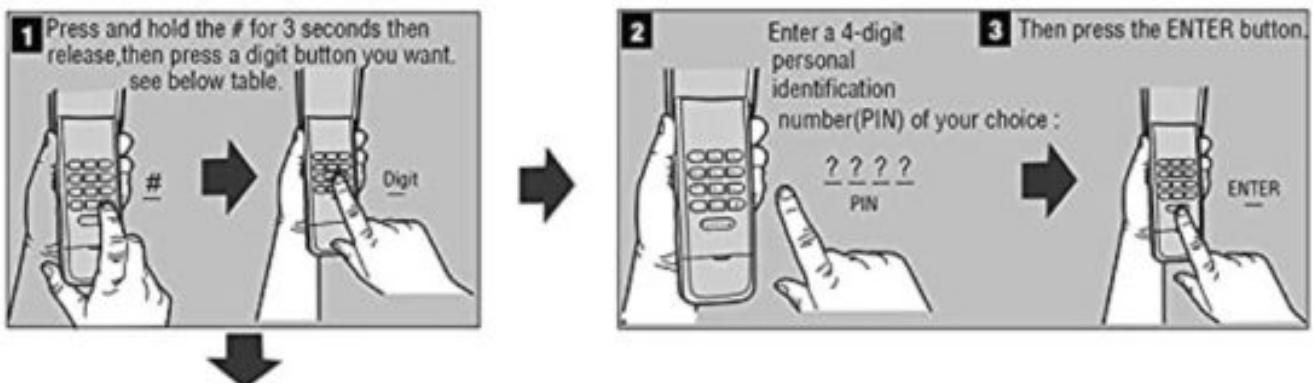
Supersonic Gate Door Automation 878MAX Universal Wireless Keypad Instruction Manual

Contents

- [1 Choose garage door opener type and Set an initial PIN code:](#)
- [2 Program the wireless keypad with garage door opener:](#)
- [3 INSTALLATION](#)
- [4 RESETTING THE KEYPAD \(FACTORY DEFAULT OR CHANGE AN EXISTING PIN](#)
- [5 BATTERY](#)
- [6 Troubleshooting](#)
- [7 Documents / Resources](#)
- [8 Related Posts](#)

Choose garage door opener type and Set an initial PIN code:

1. Press and hold the # button for 3 seconds then release(until one beep is heard), then press a Digit (to choose garage door opener type, see below table) on the keypad (LED blinks two times or two beeps heard.)
2. Enter a 4-digit personal identification number (PIN) of your choice:???
3. Press the ENTER button



Digit: Garage Door Opener Type:	
1	Liftmaster/Chamberlain/Craftsman Yellow Learn Button 2011-Current
2	Liftmaster/Chamberlain/Craftsman Purple Learn Button 2005-Current
3	Liftmaster/Chamberlain/Craftsman Orange or Red Learn Button 1997-2005
4	Liftmaster/Chamberlain/Craftsman Green Learn Button 1993-1996



For example: If your garage door opener is the Yellow Learn Button of Liftmaster, you just press and hold # for 3 seconds then release (until one beep is heard), then press 1, then enter a 4-digit PIN and press the ENTER button.



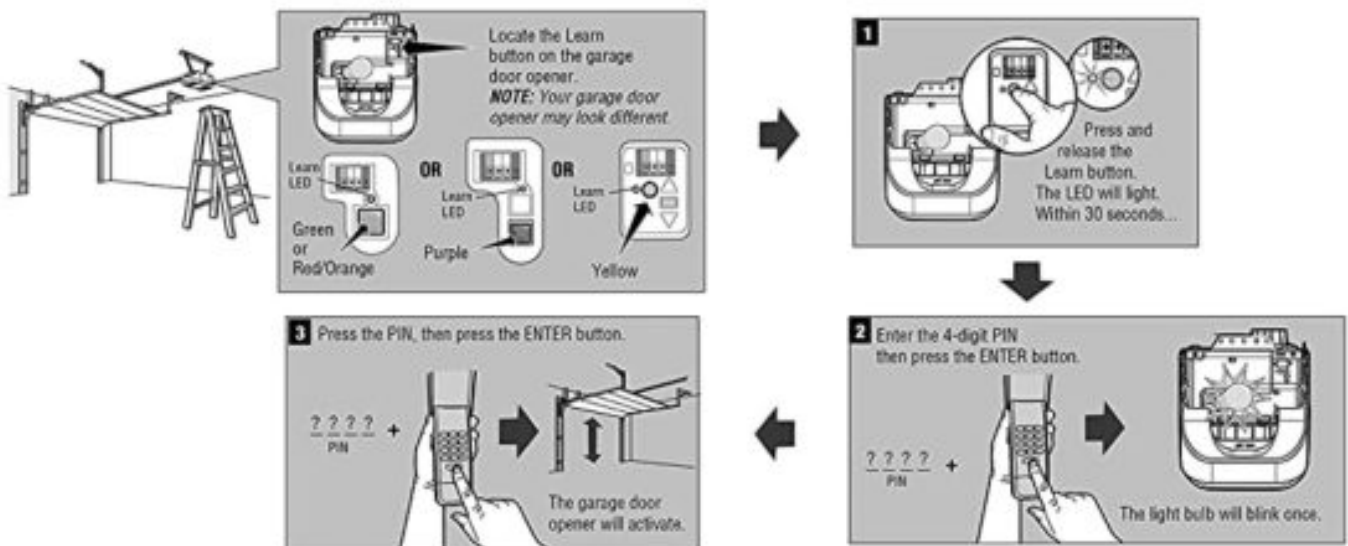
Chamberlain, Do-It. Master Mechanic, Raynor. True Value and Sears Craftsman are Compatible with Liftmaster technology.

Program the wireless keypad with garage door opener:

1. Press and release the learn button on the garage door opener, the learn indicator light will glow steadily for 30 seconds
2. Within 30 seconds, Enter the 4-digit PIN then press the ENTER button 1-2 times slowly on the keypad until the garage door opener lights flash or two clicks are heard programming is complete
3. To test operation, enter the PIN then press the ENTER button, the garage door opener will activate, and the keypad will remain for 10 seconds, during these 10 seconds press the ENTER button, it can be used to stop,



start or reverse the door. (if you want to exit right away. just press any other button on the keypad.)



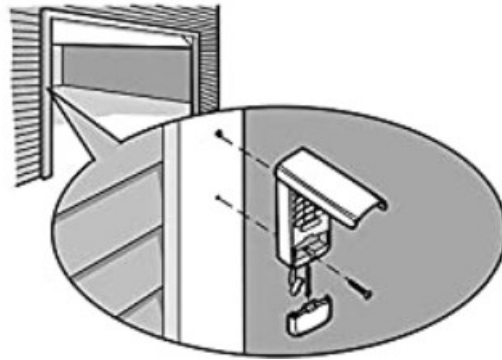
The Keypad of each type can program 2 different PINs for 2 different garage door openers.



To program the Keypad to more than one garage door opener, repeat the steps above using a new PIN and reprogram with each additional garage door opener.

INSTALLATION

1. Select a location to mount the keyless Entry at a minimum height of 5 feet (1.5) out of the reach of children.
2. Remove the battery cover.
3. Mark the top mounting hole and rt 1/8 inch (3.2 mm) pilot hole
4. Install the top screw, allowing 1/8 inches (3.2 mm) to protrude above the surface. Position the Keyless Entry over the top screw.
5. Mark the bottom hole and drill a 1/8 inch (3.2 mm) pilot hole. Install the bottom screw. Do not overtighten to avoid cracking the plastic housing.
6. Reinstall cover.



RESETTING THE KEYPAD (FACTORY DEFAULT OR CHANGE AN EXISTING PIN)

If the keypad has already been programmed or at any time the programming should be erased and started from the factory default, follow these steps

1. Press and hold the + button
2. Remove the battery cover and 1 battery then reinstall the battery.
3. beep then beep + beep beep
4. Start at the above STEPS to program a new PIN and reprogram with the garage door opener

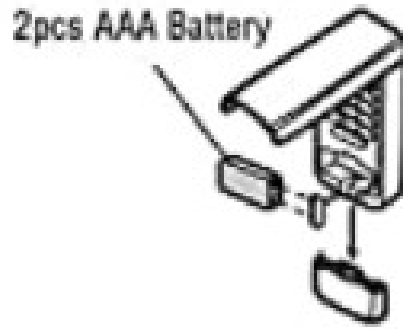
BATTERY



WARNING

To prevent possible SERIOUS INJURY Or DEATH

- NEVER allows small children near batteries.
- If the battery is swallowed, immediately notify the doctor.



Replace the battery when the keypad becomes dim or does not light after a button is pressed.
Dispose of the old battery properly.

Troubleshooting

Why does the keypad not sync with the garage door opener?

Solution1: re-set a new 4 PIN code, then re-program the keypad with the garage door opener again refer to the user manual.

Solution2: the memory of your opener may be full, press and hold the learn button on the garage door opener for several seconds until LED off then release, now all memory learned, then re-program the keypad with garage door opener again refer to the user manual.

FCC Caution:

This device complies with part 15 of the FCC Rules. Operation is subject to the following two conditions: (1) This device may not cause harmful interference, and (2) this device must accept any interference received, including interference that may cause undesired operation.

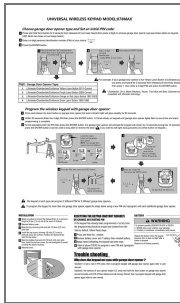
Any changes or modifications not expressly approved by the party responsible for compliance could void the user's authority to operate the equipment.

Note: This equipment has been tested and found to comply with the limits for a Class B digital device, pursuant to part 15 of the FCC Rules. These limits are designed to provide reasonable protection against harmful interference in a residential installation. This equipment generates uses and can radiate radio frequency energy and, if not installed and used in accordance with the instructions, may cause harmful interference to radio communications. However, there is no guarantee that interference will not occur in a particular installation. If this equipment does cause harmful interference to radio or television reception, which can be determined by turning the equipment off and on, the user is encouraged to try to correct the interference by one or more of the following measures:

- Reorient or relocate the receiving antenna.
- Increase the separation between the equipment and receiver.
- Connect the equipment into an outlet on a circuit different from that to which the receiver is connected.
- Consult the dealer or an experienced radio/TV technician for help.

The device has been evaluated to meet general RF exposure requirements. The device can be used in portable exposure conditions without restriction.

Documents / Resources



[Supersonic Gate Door Automation 878MAX Universal Wireless Keypad](#) [pdf] Instruction M
anual
878MAX, 2AQXW878MAX, 878MAX Universal Wireless Keypad, Universal Wireless Keypad