



SUPERNOTE A6-X2 W 7.8 Inch Monochrome Digital Paper Display User Manual

[Home](#) » [SUPERNOTE](#) » SUPERNOTE A6-X2 W 7.8 Inch Monochrome Digital Paper Display User Manual 

SUPERNOTE *Nomad*

Quick Start Guide

Model name: A6 ×2-W



Don't Panic

Contents

- 1 Specifications
- 2 Important information
- 3 Activate your Super note
- 4 Check product certifications
- 5 FCC Statement
- 6 Documents / Resources
 - 6.1 References

Specifications

Display

7.8 inch monochrome digital-paper display
1872 x 1404 resolution (300 DPI)
E Ink Carta Display

Size & Weigh

191mm (L) x 139mm (W) x 6.9mm (H)
265g

Operation System

Chauvet – Handwriting OS based on Android

Work Environment

0°C – 40°C
32°F – 104°F

Battery

Model: U2366130PHV
2700mAh 5V= 2A
Rechargeable (USB type-C)

Memory Storage

4GB RAM
32GB FLASH memory (Expandable)

* This product does not include a power adaptor, please use one that meets the industrial standard.



Important information

* Ratta will not be responsible for data loss, deletion, or corruption resulting from improper or abnormal operation, Force Majeure. Ratta also cannot be held liable for any indirect damages or losses.

Screen Safety

The screen is delicate – please protect it from bumps, drops, scratches, or anything that could apply damaging force.

Magnetism and Static Hazard

Keep clear of powerful magnets and static electricity buildup which can harm internal components.

Operating Conditions

Please avoid exposing the device to extreme or hazardous environments that could cause damage, including high or low temperatures, excessive dryness or humidity, smoke, and heavy dust.

Liquid Exposure Caution

This device is not waterproof. Please avoid contact with any liquids, including water, which could cause damage to components.

Warranty Coverage for Internal Repairs

The product warranty only remains valid if internal components are accessed by following official instructions solely for sanctioned replacement purposes. Unauthorised disassembly voids the warranty.

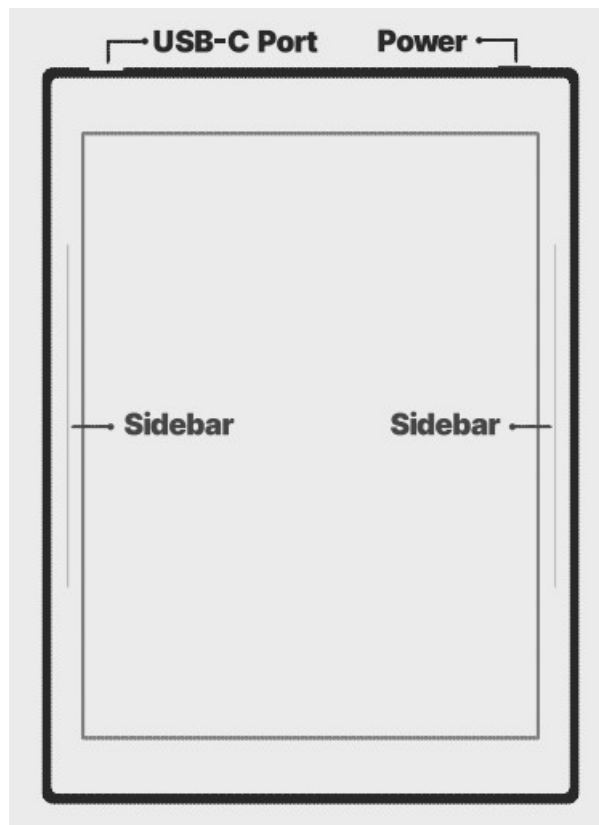
Activate your Super note

1. Power on

Long press the power button to power on your Super note device.

2. Setup

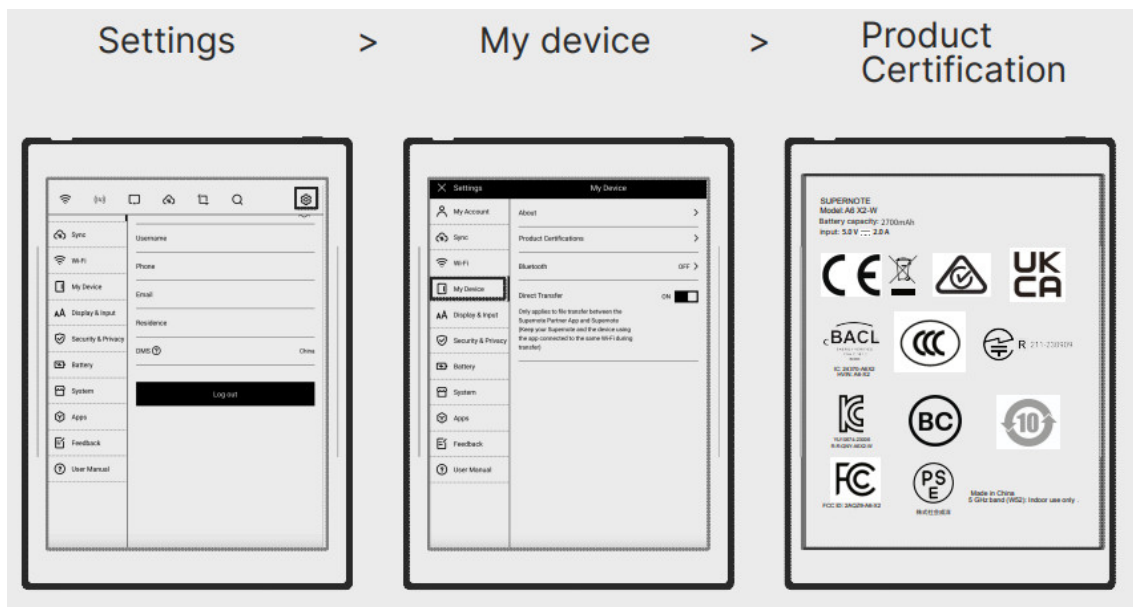
Follow the on-screen instructions to start your first note.



To view the complete User Guide, visit: support.supernote.com

Other items included: USB cable, screw driver

Check product certifications



FCC Statement

Any Changes or modifications not expressly approved by the party responsible for compliance could void the user's authority to operate the equipment. This device complies with part 15 of the FCC Rules. Operation is subject to the following two conditions:

1. This device may not cause harmful interference, and 2. This device must accept any interference received, including interference that may cause undesired operation.

Note: This equipment has been tested and found to comply with the limits for a Class B digital device, pursuant to part 15 of the FCC Rules. These limits are designed to provide reasonable protection against harmful interference in a residential installation.

This equipment generates, uses and can radiate radio frequency energy and, if not installed and used in accordance with the instructions, may cause harmful interference to radio communications. However, there is no guarantee that interference will not occur in a particular installation. If this equipment does cause harmful interference to radio or television reception, which can be determined by turning the equipment off and on, the user is encouraged to try to correct the interference by one or more of the following measures:

- Reorient or relocate the receiving antenna.
- Increase the separation between the equipment and receiver.
- Connect the equipment into an outlet on a circuit different from that to which the receiver is connected.
- Consult the dealer or an experienced radio/TV technician for help.

Specific Absorption Rate (SAR) information

SAR tests are conducted using standard operating positions accepted by the FCC with the device transmitting at its highest certified power level in all tested frequency bands, although the SAR is determined at the highest certified power level, the actual SAR level of the phone while operating can be well below the maximum value, in general, the closer you are to a wireless base station antenna, the lower the power output.

Before a new model device is available for sale to the public, it must be tested and certified to the FCC that it does not exceed the exposure limit established by the FCC Tests for each device are performed in positions and locations (e.g. at the ear and worn on the body) as required by the FCC.

For body worn operation, this model device has been tested and meets the FCC RF exposure guidelines when used with an accessory designated for this product or when used with an accessory that Contains no metal and that positions the eut a minimum of 0 mm from the body.

Non-compliance with the above restrictions may result in violation of RF exposure guidelines.

ISED RSS Warning /ASED RF Exposure Statement

ISED RSS Warning: This device complies with Innovation, Science and Economic Development Canada licence-exempt RSS standard(s). Operation is subject to the following two conditions: (1) this device may not cause interference, and (2) this device must accept any interference, including interference that may cause undesired operation of the device.

This Class B digital apparatus complies with Canadian ICES-003.

Note: For 5150~5250MHz is only for indoor use.

RF Exposure information (ISED SAR) :

This device has been tested ISED SAR and meets the ISED limit.

Information's sur exposition aux RF (ISEC SAR) :

Specific Absorption Rate (SAR) information

SAR tests are conducted using standard operating positions accepted by the ISED with the device transmitting at its highest certified power level in all tested frequency bands, although the SAR is determined at the highest certified power level, the actual SAR level of the device while operating can be well below the maximum value, in general, the closer you are to a wireless base station antenna, the lower the power output.

Before a new model device is available for sale to the public, it must be tested and certified to the ISED that it does not exceed the exposure limit established by the ISED Test is for each device are performed in positions and locations (e.g. at the ear and worn on the body) as required by the ISED .


For body worn operation, this model device has been tested and meets the ISED RF exposure guidelines when used with an accessory designated for this product or when used with an accessory that Contains no metal and that positions the eut a minimum of 0 mm from the body.

Non-compliance with the above restrictions may result in violation of RF exposure guidelines.



support.supernote.com

Documents / Resources

	<p>SUPERNOTE A6-X2 W 7.8 Inch Monochrome Digital Paper Display [pdf] User Manual A6-X2 W 7.8 Inch Monochrome Diigtal Paper Display, A6-X2 W 7.8 Inch Monochrome Diigtal P aper Display</p>
---	--

References

- [User Manual](#)