



SuperLightingLED L1(WZ) 0/1-10V ZigBee + RF + Push Dimmer Instruction Manual

[Home](#) » [SuperLightingLED](#) » SuperLightingLED L1(WZ) 0/1-10V ZigBee + RF + Push Dimmer Instruction Manual

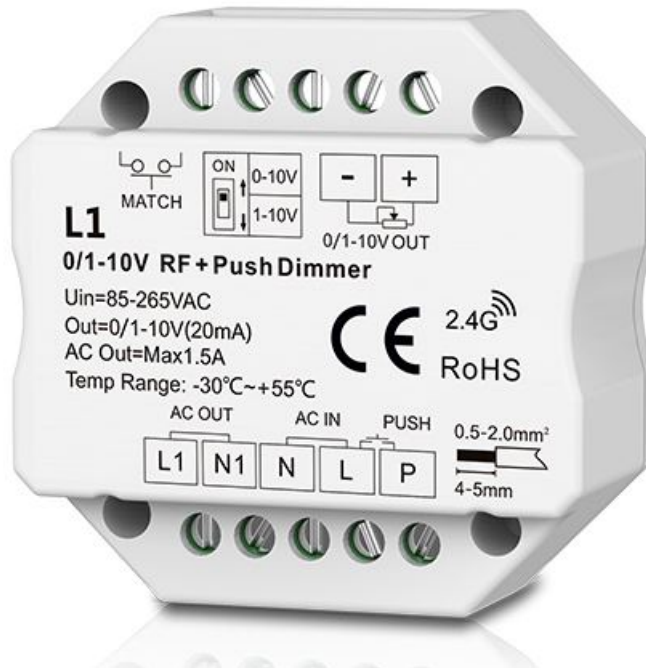


Contents

- [1 SuperLightingLED L1\(WZ\) 0/1-10V ZigBee + RF + Push Dimmer](#)
- [2 0/1-10V ZigBee + RF + Push Dimmer](#)
- [3 Features](#)
- [4 Technical Parameters](#)
- [5 Wiring diagram](#)
- [6 Documents / Resources](#)
- [7 Related Posts](#)



SuperLightingLED L1(WZ) 0/1-10V ZigBee + RF + Push Dimmer



0/1-10V ZigBee + RF + Push Dimmer



Model No.: L1(WZ)

Tuya APP cloud control/Voice control/RF dimming/Push Dim/0-10V or 1-10V/Wall junction box mounting

Features

- ZigBee + RF + AC push 0/1-10V dimmer, 1 channel output.
- Output 1 channel 0/1-10V signal, connect with 0/1-10V dimmable driver.
- Tuya APP cloud control, support on/off, brightness adjust, delay turn on/off light, timer run, scene function.
- Voice control, support amazon ECHO and TmallGenie smart speaker.
- 0-10V or 1-10V output selectable by DIP switch.
- 256 levels 0-100% dimming smoothly without any flash.
- Compatibility with RF 2.4G single zone or multiple zone dimming remote control.

- Each L1(WZ) controller can also work as ZigBee-RF converter, then use Tuya APP to control one or more RF dimming LED controller or driver synchronously.
- Connect with external push switch to achieve on/off and 0-100% dimming function.
- Easy to be placed in standard wall junction box behind a push switch.

Technical Parameters

Input and Output	
Input voltage	AC100-240V
Output signal	0/1-10V (20mA)

Safety and EMC

EMC standard (EMC)

EN 55015:2013
EN 61547:2009
EN 61000-3-2:2014
EN 61000-3-3:2013

Safety standard(LVD)

EN 61347-2-11:2002
EN 61347-1:2015
EN 62493:2015

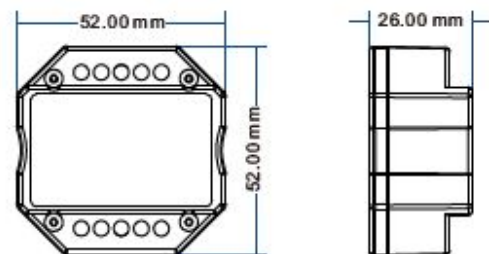
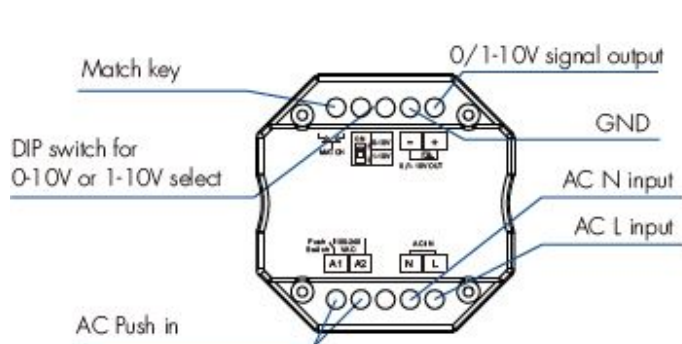
Certification

CE,EMC,LVD

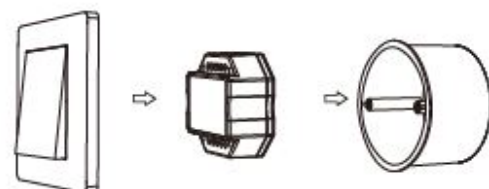
Dimming data	
Input signal	Tuya APP + RF + Push Dim
RF Control distance	30m(Barrier-free space)
Dimming level	256 levels
Dimming range	0 -100%

Environment	
Operation temperature	Ta: -30 OC ~ +55 OC
Case temperature (Max.)	T c: +65OC
IP rating	IP20

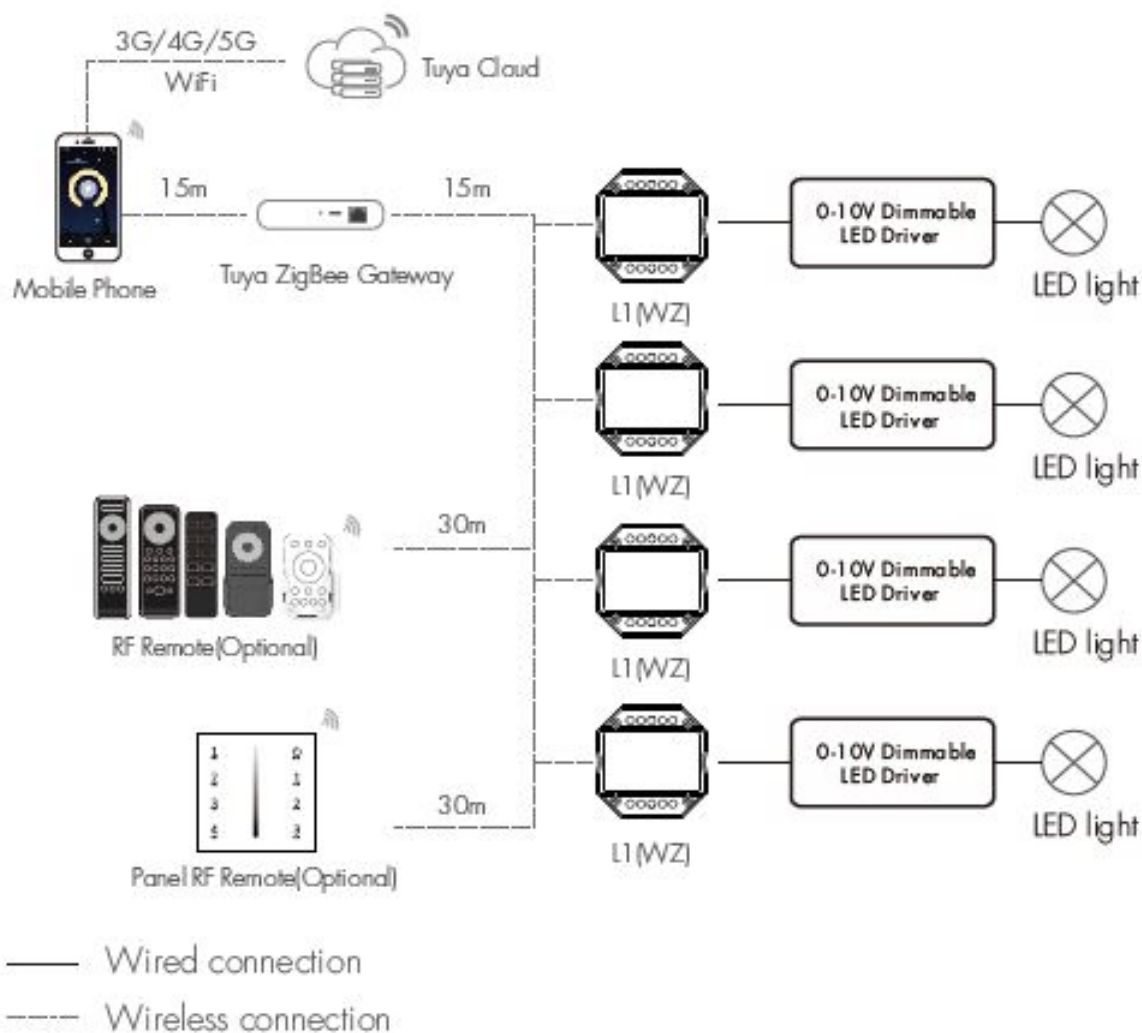
Mechanical Structures and Installations



Typical Wall Junction Box Mounting



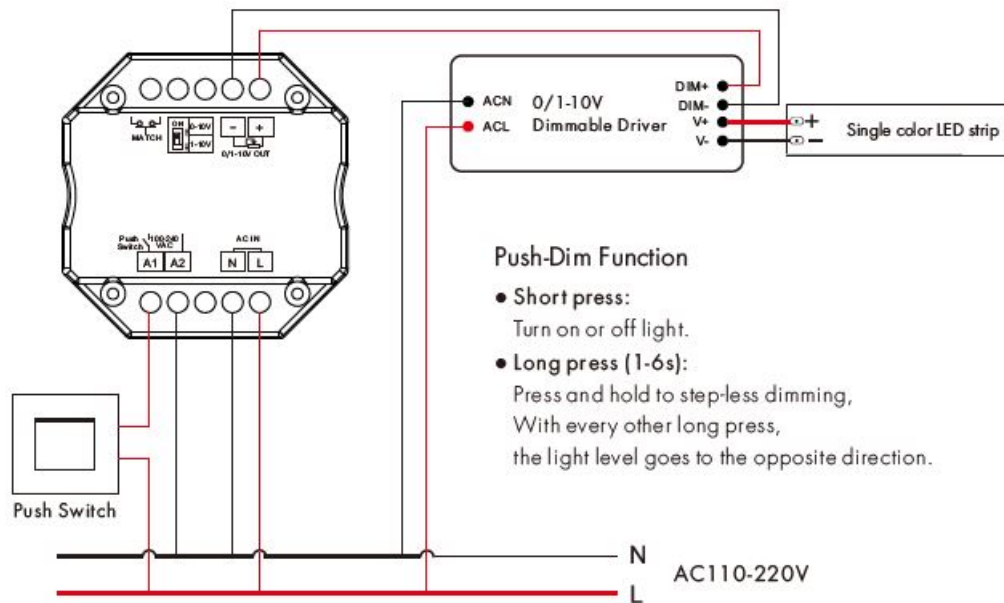
System wiring



Note:

1. The above distance is measured in spacious(no obstacle) environment,
Please refer to the actual test distance before installation.
2. Users must use the Tuya ZigBee gateway to realize remote control and voice control.

Wiring diagram



Note: We recommend the number of LED drivers connected to 0/1-10V dimmer does not exceed 5 pieces, The maximum length of the wires from dimmer to LED driver should be no more than 15 meters.

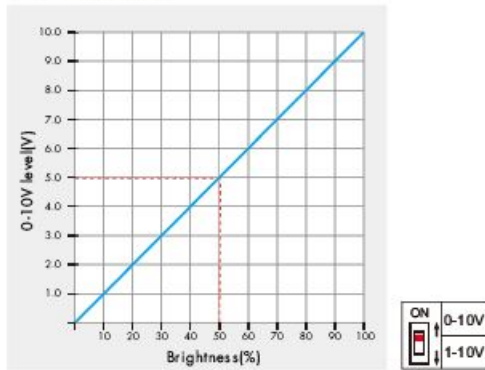
Tuya APP network connection and operation



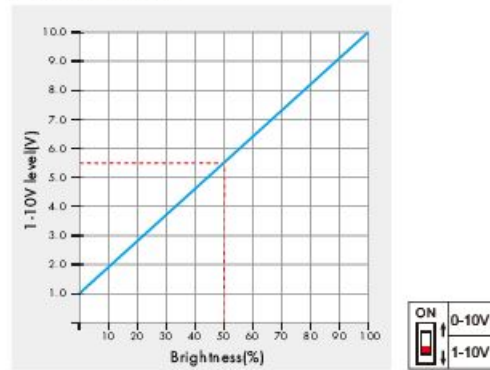
- Press and hold the Match/Set key for 2s, reset the ZigBee network.
- Press and hold the Match/Set key for 5s, or push twice the Match/Set key fastly,
- Clear previous network connection, enter config mode. the blue LED indicator fast flash.
- If the Tuya APP network connection succeeds, the blue LED indicator will stop flash, and in Tuya APP, you can find the SKYDANCE-ZB-DIM device.
- Tuya APP interface operation: Touch the brightness slide to adjust brightness.

0-10V or 1-10V dimming setting

0-10V Dimmer



1-10V Dimmer



Select 0-10V dimmer or 1-10V dimmer according to the dimmable LED driver.

L1(WZ) match RF remote control (Optional)

End-user can choose the suitable match/delete ways. Two options are offered for selection:

Use the L1(WZ)'s Match key

Match:

Short press the match key of L1(WZ), immediately press on/off key (single-zone remote) or zone key (multiple zone remote) on the remote.

Delete:

Press and hold the match key of L1(WZ) for 10s to delete all matches, The light blinks 5 times means all matched remotes were deleted.

Use Power Restart

Match:

Switch off the power of L1(WZ), then switch on power again, immediately short press on/off key (single-zone remote) or zone key (multiple zones remote) 3 times on the remote. The light blinks 3 times means match is successful.

Delete:

Switch off the power of L1(WZ), then switch on power again, immediately short press on/off key (single-zone remote) or zone key (multiple zones remote) 5 times on the remote. The light blinks 5 times means all matched remotes were deleted.

L1(WZ) work as a ZigBee-RF converter to match other RF dimming LED controller or driver

End-user can choose the suitable match/delete ways. Two options are offered for selection:

Use the controller's Match key

Match:

Short press the match key of the controller, immediately press on/off key on the Tuya APP. The LED indicator fast flash a few times means the match is successful.

Delete:

Press and hold the match key of the controller for 5s, The LED indicator fast flash a few times means the match was deleted.

Use Power Restart

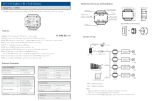
Match:

Switch off the power of the controller, then switch on power again, immediately short press on/off key 3 times on the Tuya APP. The light blinks 3 times means match is successful.

Delete:

Switch off the power of the controller, then switch on power again, immediately short press on/off key 5 times on the Tuya APP. The light blinks 5 times means match was deleted.

Documents / Resources

	SuperLightingLED L1(WZ) 0/1-10V ZigBee + RF + Push Dimmer [pdf] Instruction Manual L1 WZ, 0 1-10V ZigBee RF Push Dimmer, L1 WZ 0 1-10V ZigBee RF Push Dimmer
---	---

Manuals+.