


# SuperLightingLED L1 0 Or 1 10V ZigBee RF Push Dimmer User Manual

[Home](#) » [SuperLightingLED](#) » SuperLightingLED L1 0 Or 1 10V ZigBee RF Push Dimmer User Manual 

## Contents

- [1 SuperLightingLED L1 0 Or 1 10V ZigBee RF Push Dimmer](#)
- [2 Features](#)
- [3 Technical Parameters](#)
- [4 Mechanical Structures and Installations](#)
- [5 System wiring](#)
- [6 Wiring diagram](#)
- [7 Tuya APP network connection and operation](#)
- [8 Documents / Resources](#)
- [9 Related Posts](#)



SuperLightingLED L1 0 or 1 10V ZigBee RF Push Dimmer



Features

- ZigBee + RF + AC push 0/1-10V dimmer, 1 channel output.
- Output 1 channel 0/1-10V signal, connect with 0/1-10V dimmable driver.
- Tuya APP cloud control, support on/off, brightness adjust, delay turn on/off light, timer run, scene function.
- Philips HUE APP control by connect with Philips HUE bridge.
- Voice control, support amazon ECHO and TmallGenie smart speaker.
- 0-10V or 1-10V output selectable by DIP switch.
- 256 levels 0-100% dimming smoothly without any flash.
- Compatibility with RF 2.4G single zone or multiple zone dimming remote control.
- Each L1(WZ) controller can also work as ZigBee-RF converter, then use Tuya APP to control one or more RF dimming LED controller or driver synchronously.
- Connect with external push switch to achieve on/off and 0-100% dimming function.
- Light on/off fade time 3s selectable.
- Easy to be placed in standard wall junction box behind a push switch.

Technical Parameters

Input and Output	
Input voltage	AC100-240V
Output signal	0/1-10V (20mA)

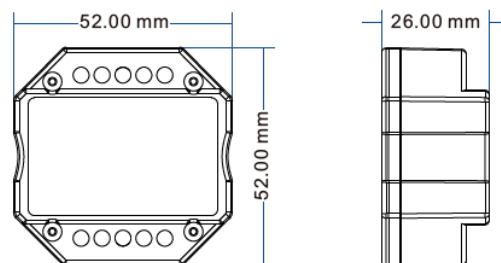
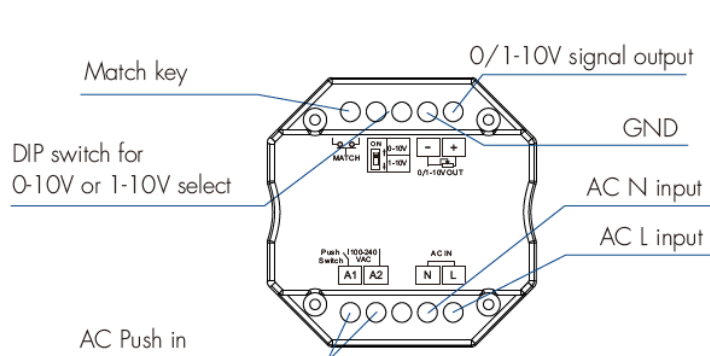
Safety and EMC	
EMC standard (EMC)	ETSI EN 301 489-1 V2.2.3
	ETSI EN 301 489-17 V3.2.4
Safety standard(LVD)	EN 62368-1:2020+A11:2020
Radio Equipment(RED)	ETSI EN 300 328 V2.2.2
Certification	CE,EMC,LVD,RED

Dimming data	
Input signal	Tuya APP + RF + Push Dim
RF Control distance	30m(Barrier-free space)
Dimming level	256 levels
Dimming range	0 -100%

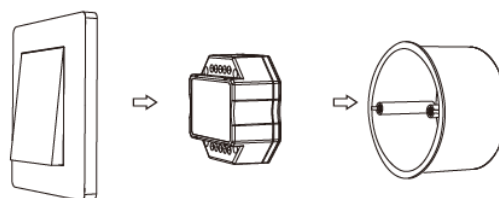
Environment	
Operation temperature	Ta: -30 OC ~ +55 OC
Case temperature (Max.)	T c: +65OC
IP rating	IP20

**Warranty 5 years**

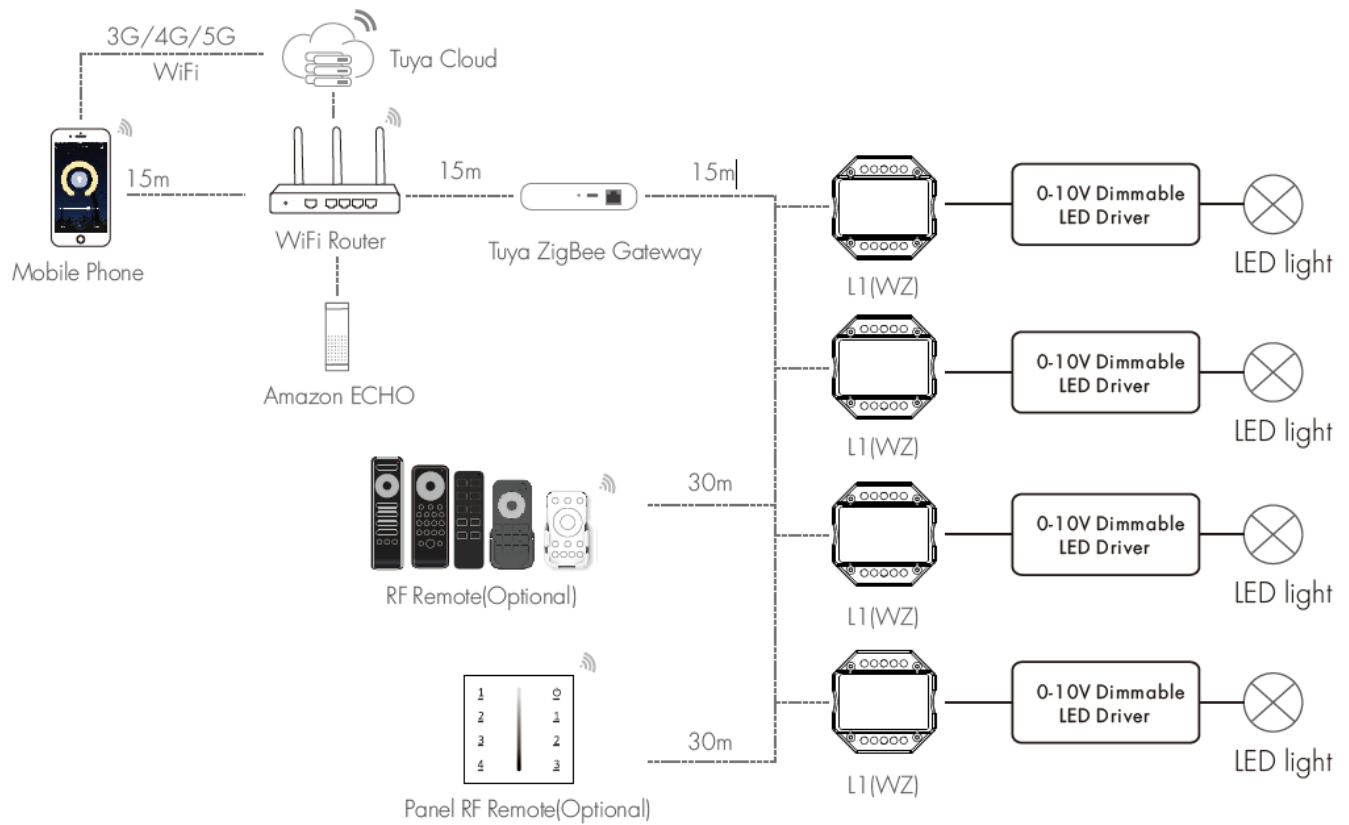
## Mechanical Structures and Installations



Typical Wall Junction Box Mounting



## System wiring

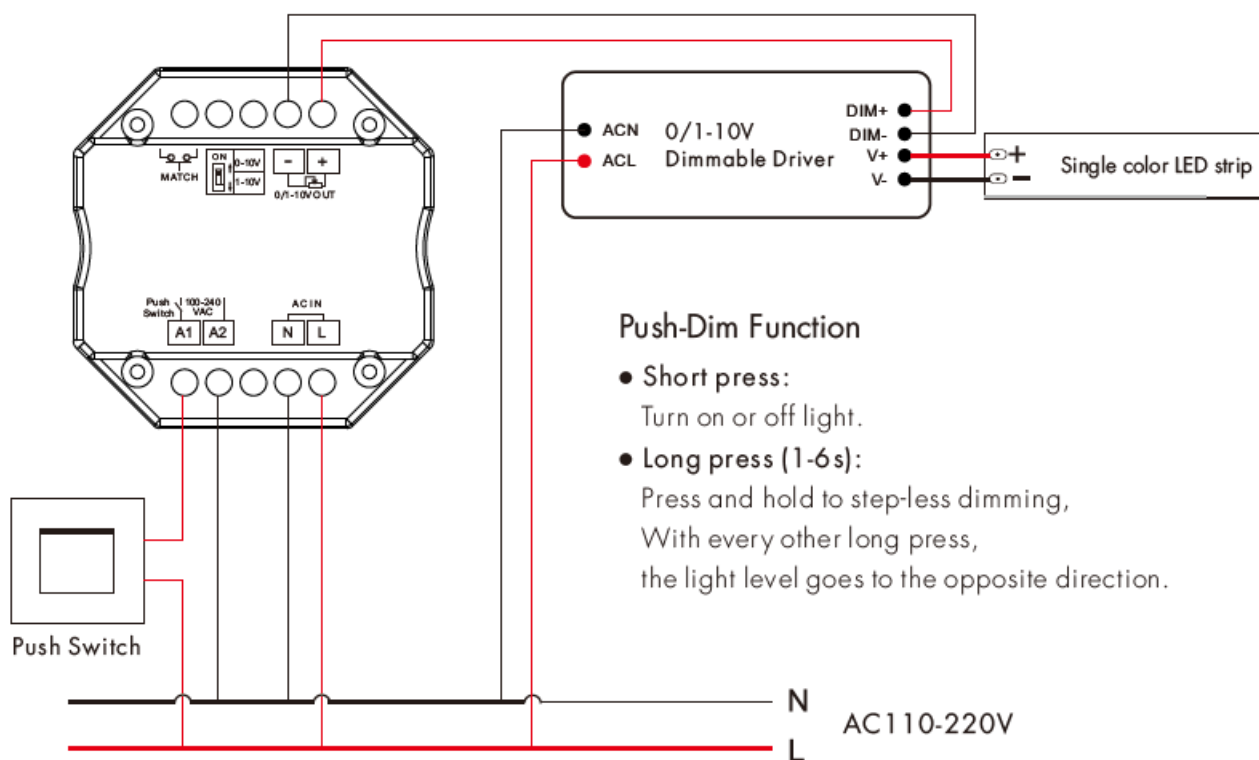


- Wired connection
- Wireless connection

### Note:

1. The above distance is measured in spacious(noobstacle) environment,  
Please refer to the actual test distance before installation.
2. Users must use the Tuya ZigBee gateway to realize remote control and voice control.

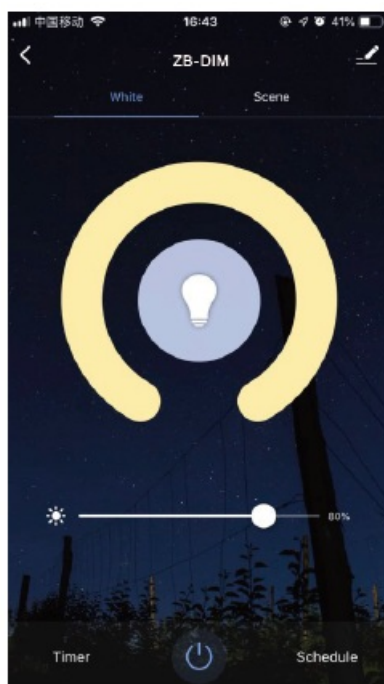
## Wiring diagram



**Note:**

1. We recommend the number of LED drivers connected to the 0/1-10V dimmer does not exceed 50 pieces, The maximum length of the wires from dimmer to the LED driver should be no more than 50 meters.
2. Switch off the power, then switch on the power, and repeat again. Immediately short press match key 3 times, the light on/off time will change between 3s and 0.5s.

## Tuya APP network connection and operation



- Press and hold the Match/Set key for 2s, and reset the ZigBee network.

- Press and hold the Match/Set key for 5s,  
or push twice Match/Set key fastly,
- Clear previous network connection, and enter config mode. the blue LED indicator fast flash.
- Repeat power on and off 5 consecutive times, also, clear previous network connection, enter config mode.
- If the Tuya APP network connection succeeds, the blue LED indicator will stop flash, and in Tuya APP, you can find the ZB-DIM device.

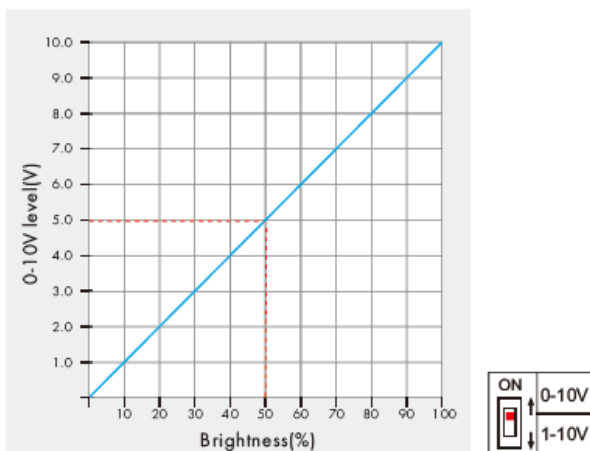
#### Tuya APP interface operation:

- Touch brightness slide to adjust brightness.

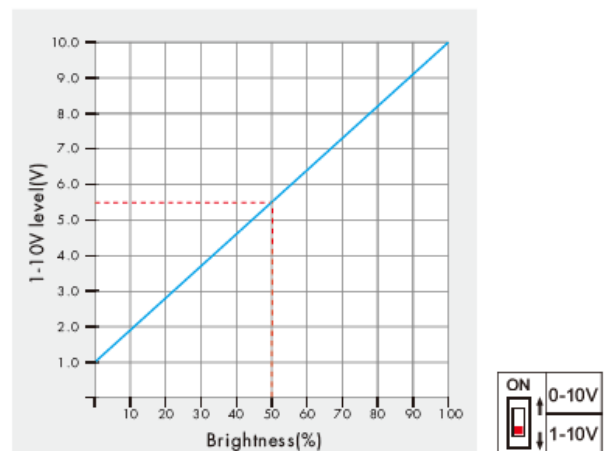
#### 0-10V or 1-10V dimming setting

Select 0-10V dimmer or 1-10V dimmer according to dimmable LED driver.

##### 0-10V Dimmer



##### 1-10V Dimmer



#### L1(WZ) match RF remote control (Optional)

End user can choose the suitable match/delete ways. Two options are offered for selection:

##### Use the L1(WZ)'s Match key

###### Match:

Short press match key of L1(WZ),  
immediately press on/off key (single zone remote) or zone key (multiple zone remote) on the remote.

###### Delete:

Press and hold the match key of L1(WZ) for 10s  
to delete all matches,  
The light blinks 5 times means all matched remotes were deleted.

##### Use Power Restart

###### Match:

Switch off the power of L1(WZ), then switch on the power, and repeat again. An immediately short press on/off key (single-zone remote) or zone key (multiple zone remote) 3 times on the remote.  
The light blinks 3 times means the match is successful.

###### Delete:

Switch off the power of L1(WZ), then switch on the power, and repeat again.

An immediately short press the on/off key (single-zone remote) or zone key (multiple zone remote) 5 times on the remote.

The light blinks 5 times means all matched remotes were deleted.

### **L1(WZ) work as a ZigBee-RF converter to match other RF dimming LED controller or driver**

End-user can choose the suitable match/delete ways. Two options are offered for selection:

#### **Use the controller's Match key**

##### **Match:**

Short press the match key of the controller, and immediately press on/off key on the Tuya APP. The LED indicator fast flash a few times means match is successful.

##### **Delete:**

Press and hold the match key of the controller for 5s, The LED indicator fast flash a few times means the match was deleted.

#### **Use Power Restart**

##### **Match:**

Switch off the power of the controller, then switch on the power, and repeat again. An immediately short press on/off key 3 times on the Tuya APP.

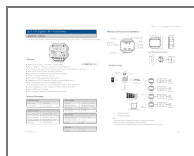
The light blinks 3 times means the match is successful.

##### **Delete:**

Switch off the power of the controller, then switch on the power, and repeat again. An immediately short press on/off key 5 times on the Tuya APP.

The light blinks 5 times means the match was deleted.

## **Documents / Resources**



[SuperLightingLED L1 0 Or 1 10V ZigBee RF Push Dimmer](#) [pdf] User Manual  
L1, 0 Or 1 10V ZigBee RF Push Dimmer, L1 0 Or 1 10V ZigBee RF Push Dimmer, L1 WZ