

SUPERLIGHTINGLED
DMX512 Dual
Color Controller



SUPERLIGHTINGLED DMX512 Dual Color Controller Instruction Manual

[Home](#) » [SuperLightingLED](#) » SUPERLIGHTINGLED DMX512 Dual Color Controller Instruction Manual 

Contents

- [1 SUPERLIGHTINGLED DMX512 Dual Color Controller](#)
- [2 Specifications](#)
- [3 Function Introduction](#)
- [4 Product Data](#)
- [5 Safety & Warnings](#)
- [6 FAQ](#)
- [7 Documents / Resources](#)
 - [7.1 References](#)

SUPERLIGHTINGLED

SUPERLIGHTINGLED DMX512 Dual Color Controller

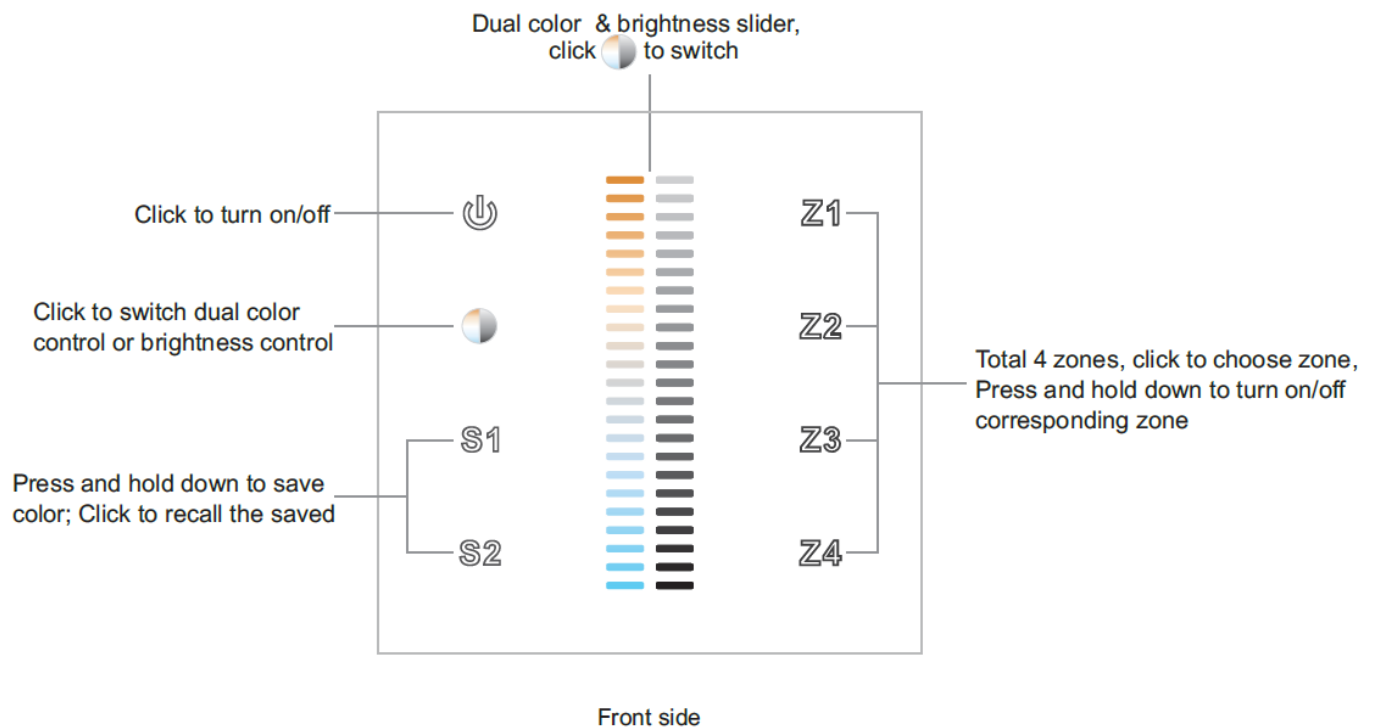


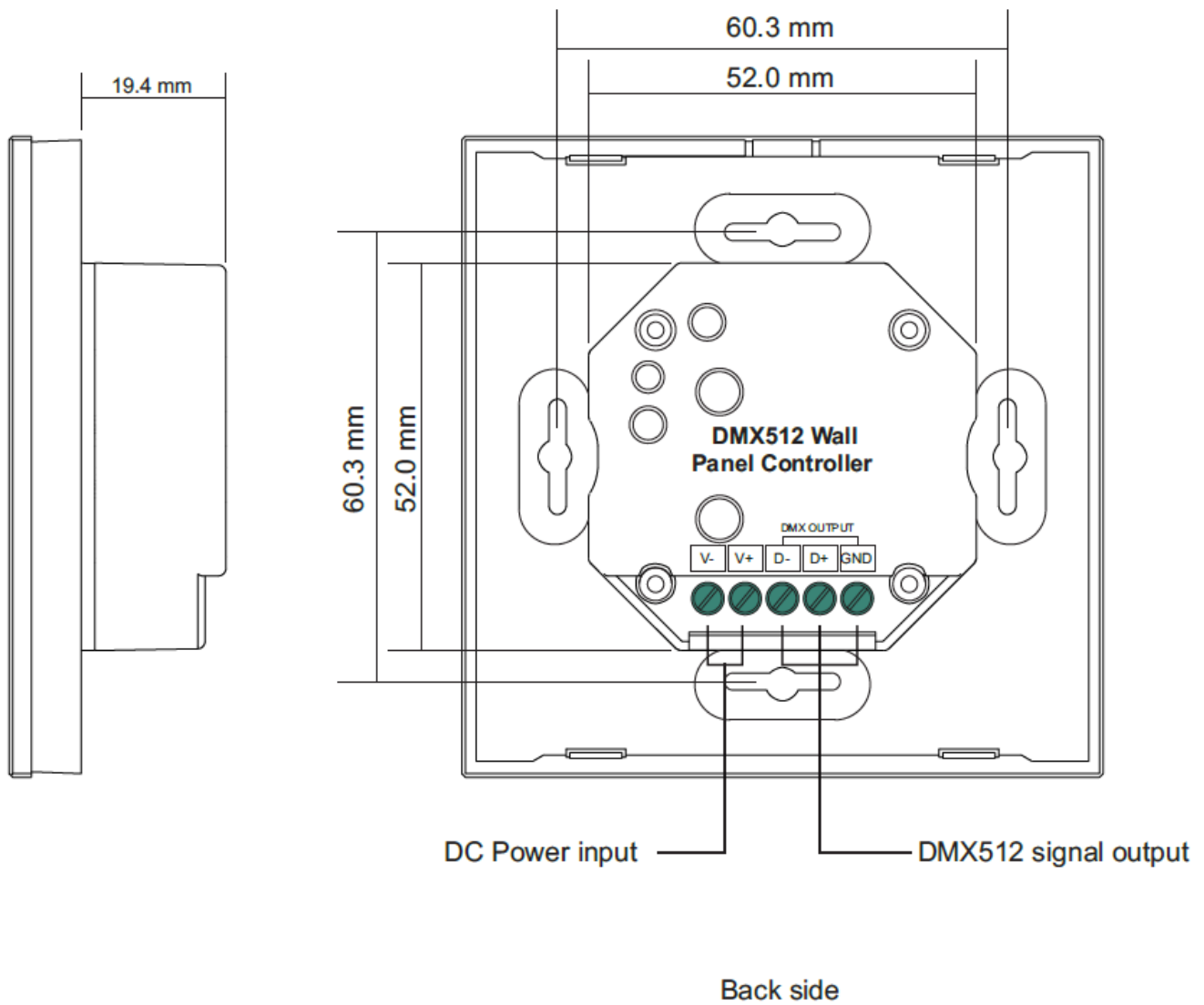
Specifications

- **Product Name:** Dual Color DMX512 Controller
- **Output Signal:** DMX512
- **Power Supply:** 12-24VDC
- **Power Consumption:** Varies
- **Operating Temperature:** Varies
- **Relative Humidity:** Varies
- **Dimensions:** 86x86x29.1mm
- **Zones:** 4 zones

Function Introduction

Dual color & brightness slider, click to switch. Click to turn on/off. Click to switch dual color control or brightness control. Press and hold down to save color; Click to recall the saved.





Zone Control

Total 4 zones, click to choose zone, Press and hold down to turn on/off corresponding zone.

Connectivity

Connect with Dual Color LED Strip using the provided connections on the backside.

Setting DMX Address

This DMX master controller controls 4 zones of DMX decoders by setting DMX decoders' address as follows: DMX decoders with address 001 will be controlled by zone 1, DMX decoders with address 005 will be controlled by zone 2, DMX decoders with address 009 will be controlled by zone 3, DMX decoders with address 013 will be controlled by zone 4.

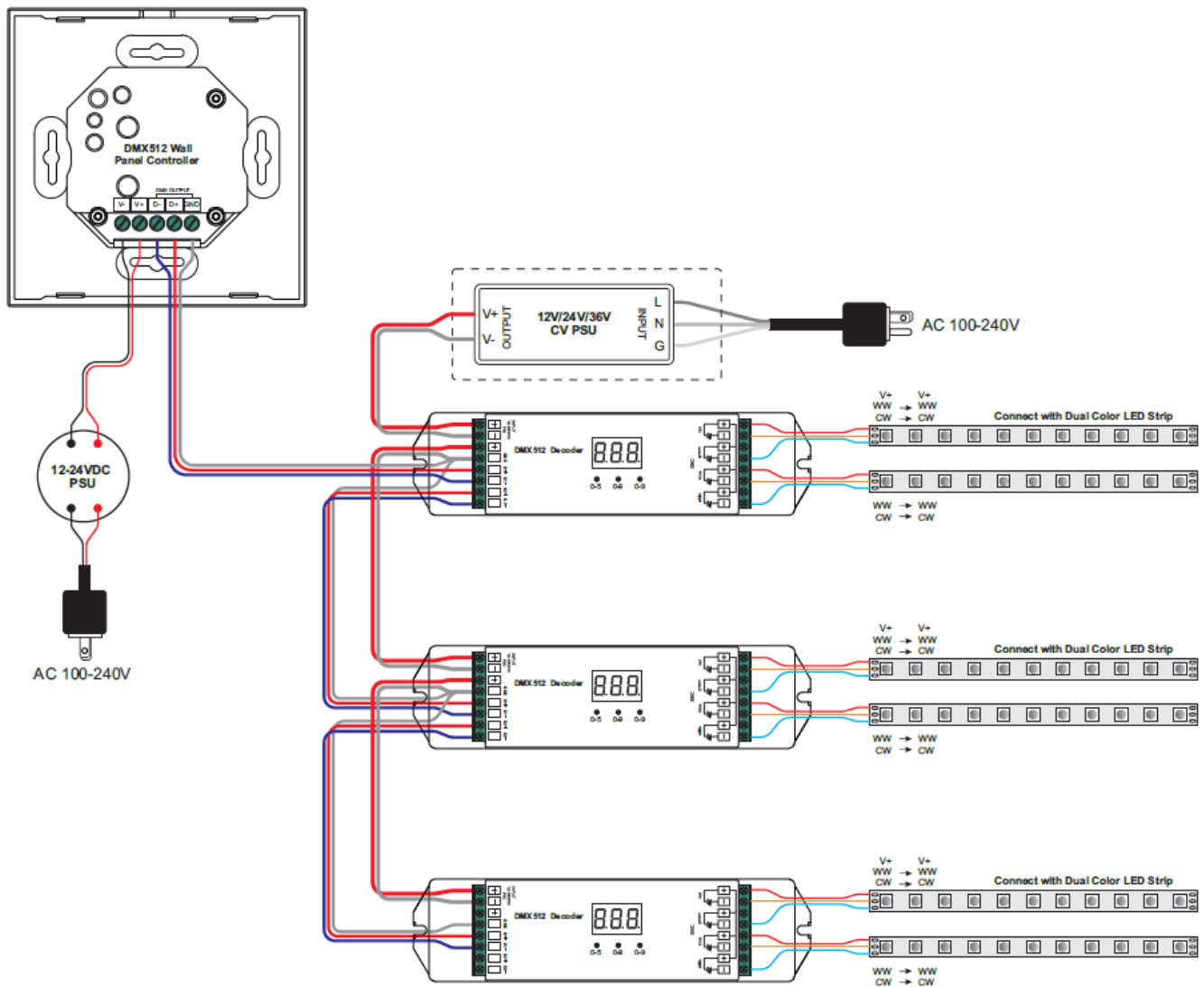
Product Data

Output Signal	DMX512 signal
Power Supply	12-24VDC
Power consumption	< 20 mA
Operating temperature	0-40°C
Relative humidity	8% to 80%
Dimensions	86x86x29.1mm

- Touch sensitive
- Glass interface(white & black)
- Standard DMX512 Signal output
- Control CCT color
- Control 4 zones synchronously and separately
- Waterproof grade: IP20

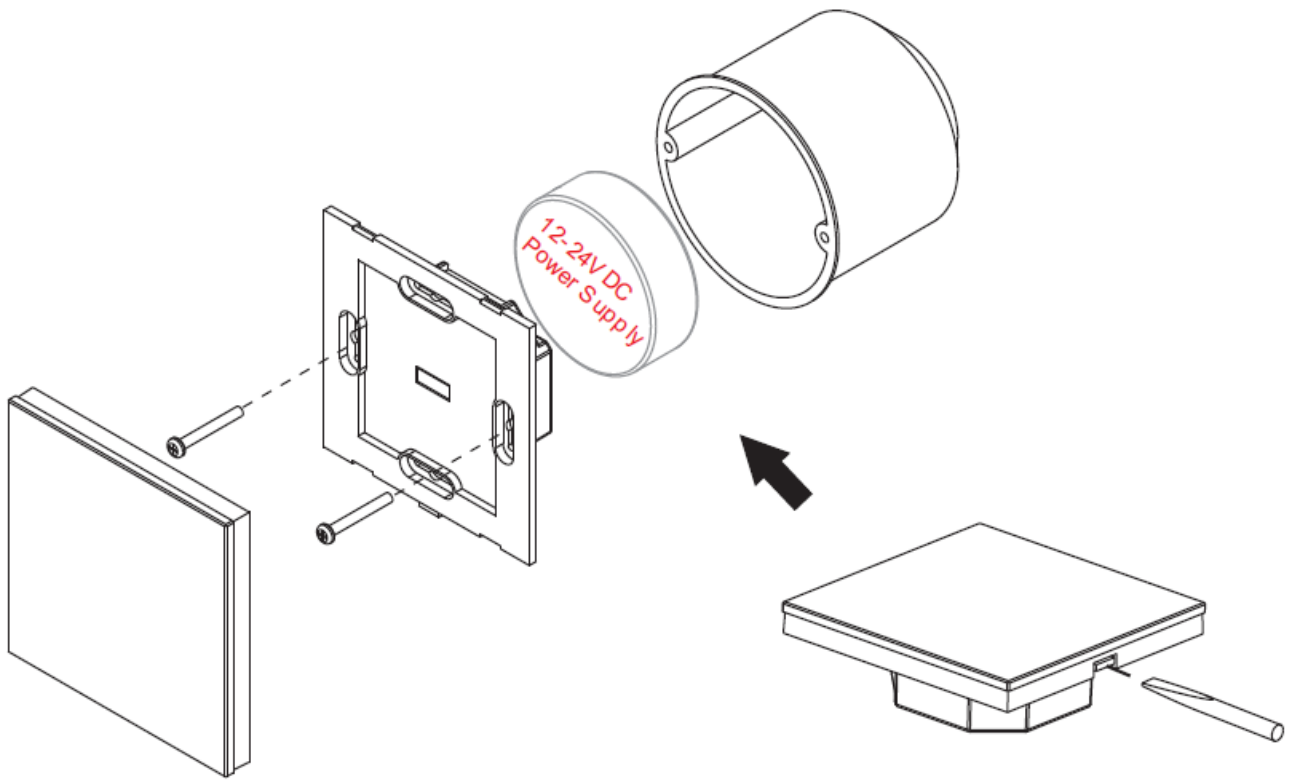
Safety & Warnings

- DO NOT install with power applied to device.
- DO NOT expose the device to moisture.



Installation

Refer to the user manual for detailed installation instructions.



FAQ

Q: How do I save a color using the controller?

A: Press and hold down the dual color & brightness slider to save the color. Click to recall the saved color.

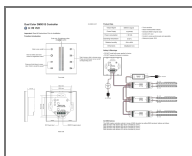
Q: How do I choose a specific zone to control?

A: Click on the controller to choose the desired zone. Press and hold down to turn on/off the corresponding zone.

Q: What is the power supply requirement for this controller?

A: The controller requires a power supply of 12-24VDC.

Documents / Resources



[SUPERLIGHTINGLED DMX512 Dual Color Controller](#) [pdf] Instruction Manual
DMX512, DMX512 Dual Color Controller, Dual Color Controller, Color Controller, Controller

References

- [User Manual](#)

[Manuals+.](#) [Privacy Policy](#)

This website is an independent publication and is neither affiliated with nor endorsed by any of the trademark owners. The "Bluetooth®" word mark and logos are registered trademarks owned by Bluetooth SIG, Inc. The "Wi-Fi®" word mark and logos are registered trademarks owned by the Wi-Fi Alliance. Any use of these marks on this website does not imply any affiliation with or endorsement.