



SuperFish 4000 Combi Clear Filter User Manual

[Home](#) » [SuperFish](#) » SuperFish 4000 Combi Clear Filter User Manual 

SuperFish 4000 Combi Clear Filter User Manual



Contents

- 1 General instructions
- 2 Safety
- 3 Installation
- 4 Maintenance of the filter
- 5 Maintenance of the pump and UVC-unit
- 6 Warranty conditions
- 7 Documents / Resources
 - 7.1 References
- 8 Related Posts

General instructions

Read this manual carefully before using this device. Keep this manual for future reference.

Use

- Suitable for outdoor usage, must be used submerged.
- This filter should be only used for cleaning pond water and the water temperature should not exceed 35°C. It should never be used for other liquids or chemicals.


Safety

Always follow the safety instructions below for safe use of the device. Failure to follow these instructions may endanger persons or the environment.




- **WARNING!** This UVC device emits UV-C radiation, which can cause serious eye damage and/or damage to the skin. The UV lamp must therefore always be installed completely shielded from the eyes.
- Never look at a burning UV lamp. Do not switch on the lamp until it is fully shielded installed and fully submerged.



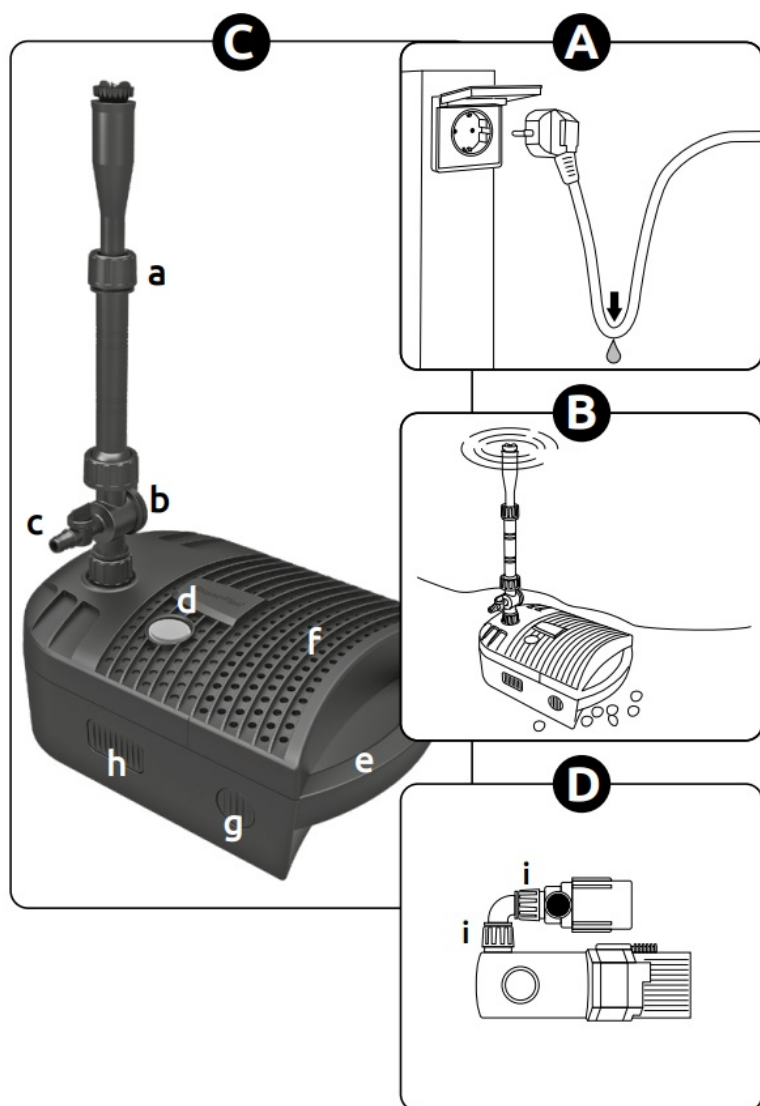
- This device must be supplied through a residual current device (RCD) having a rated residual operating current not exceeding 30 mA.
- Ensure the voltage shown on the label matches the mains supply voltage.
- This device must be connected to a socket which is earthed.
- Protect the socket and plug against moisture. Use a drip loop to ensure that water cannot reach the socket via the cord (**see Fig. A**).
- Don't use the product if the device, quartz glass, cord or plug is damaged. Replace the quartz glass or return the device to your dealer for repair or recycling.
- If the power cord or plug is damaged, the electrical part should be replaced.
- Be careful with the combination of water and electricity. Do not operate with wet hands. Dry hands before carrying out maintenance.
- Always switch off all devices in the pond before maintenance. Disconnect the plug(s) from the socket.
-  **NOTICE!** The UV lamp becomes warm. Allow the lamp to cool for at least 10 minutes before carrying out

maintenance.

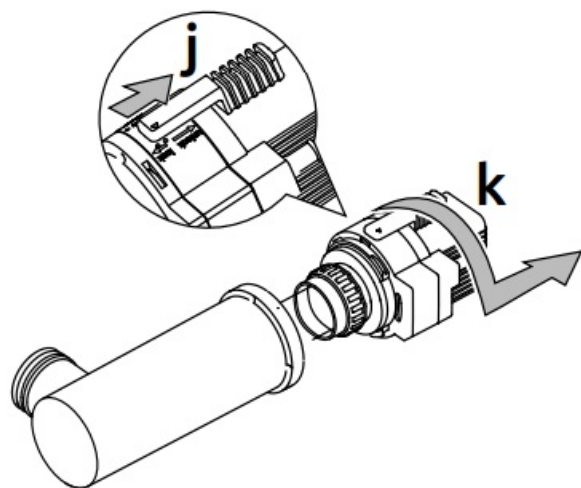
- In the event of frost or the risk of frost, appropriate precautions must be taken to prevent it from freezing.

-  This device can be used by children aged from 8 years and above, persons with reduced physical, sensory or mental capabilities or lack of experience and knowledge, if they have been given supervision or instructions concerning the use of the device in a safe way and understand the hazards involved. Children shall not play with the device. Cleaning and maintenance of the device shall not be done by children without supervision.
- Modifications to the device may affect the safety. The warranty will also expire.
- Aquadistri is not liable for any problems, damage or accidents due to incorrect use of this device.

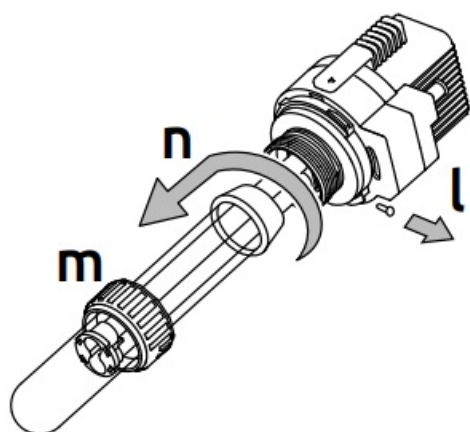
Installation



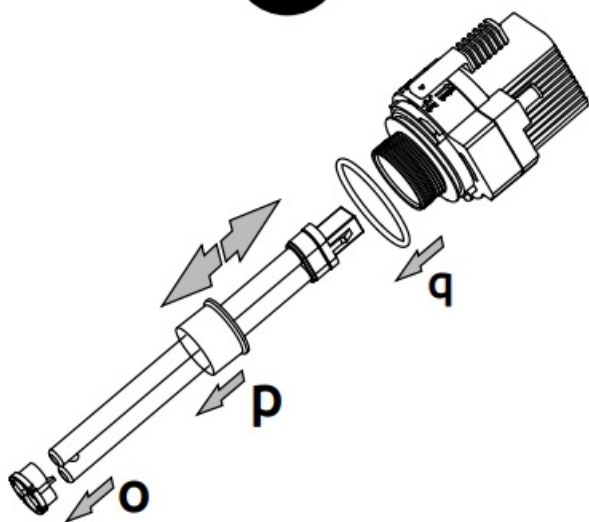
E



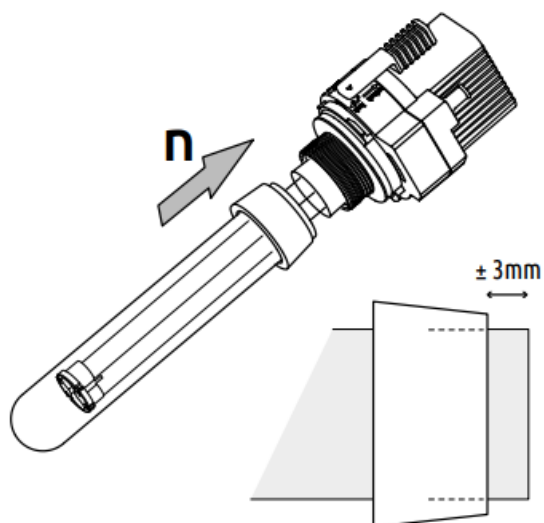
F

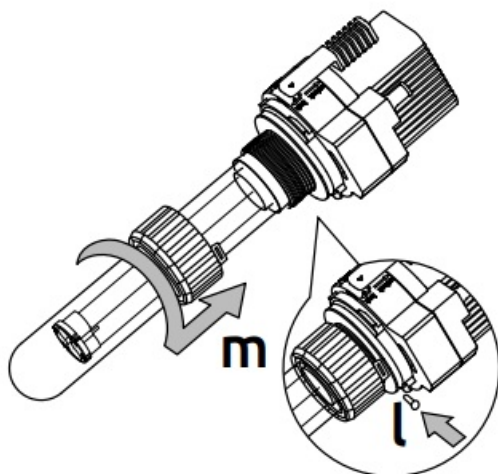
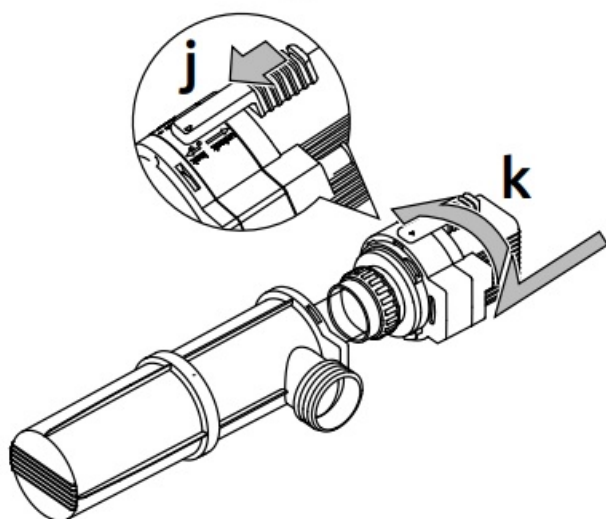


G



H



I**J**

- **NOTICE!** Before installation, check the quartz glass for any breakage.
- Place the Combi Clear filter in the pond under the water surface, ensuring that it is stable on the pond bottom **(B)**. The fountain nozzle should be slightly above the water surface, the spray pipe **(C-a)** is adjustable in height (telescopic) and can be slightly tilted (15°).
- The flow and head is adjustable by means of a knob on the spray pipe **(C-b)**, allowing you to adjust the height or diameter of the fountain.
- You can connect a hose to the side of the spray pipe for a waterfall or water figure **(C-c)**.
- Switch the filter on by plugging the plug into a grounded socket.
- Check the operation of the UV lamp via the light indicator on the cover **(C-d)**.
- Never lift the filter from the water by the cord, pull the plug out of the socket and lift the filter by the handle **(C-e)** out of the water.

Maintenance of the filter

- Always disconnect from the mains supply before carrying out any maintenance!
- Clean filter regularly, after first installation. If your pond is heavily polluted, the filter sponge should initially be cleaned daily. Remove the filter compartment cover **(C-f)** by simultaneously pressing the catch **(C-g)** on both sides and lifting the cover up.
- Take out the filter sponge and rinse with clean tap water.
- Activated carbon absorbs color and toxins from the water and therefore becomes saturated. Replace the filter sponge and the filter media twice a season (more often if necessary), a Combi Clear Filter Media Set (art. 06020760 and art. 06020763) is available from your SuperFish dealer.

Maintenance of the pump and UVC-unit

- Check monthly the operation of the UV lamp via the light indicator on the cover **(C-d)**.
- Always disconnect from the mains supply before carrying out any maintenance!
- For maintenance of the pump and UVC, first loosen and remove the spray pipe **(C-a)**. Press the catch **(C-h)** of the front cover on both sides and lift the cover up.
- The pump and the UVC-unit are connected to each other by a 90° bend, loosen one of the swivels **(D-i)** to disconnect the pump from the UVC.
- Your pump needs regular cleaning. There is no warranty on failures due to dirty pumps and scale build up inside the pump caused by improper maintenance.
- Depending on usage the rotor of your pump can get worn out and damaged, this is normal, new rotors can be purchased at your dealer, Combi Clear 2000 Rotor (Art. 06020775), 4000 Rotor (Art. 06020780) 6000 Rotor (Art. 06020775).
- The UVC device should be cleaned twice a year. As soon as algae growth increases, check the UVC and UV-lamp and clean or exchange as needed.
- The lamp is hot, wait 10 minutes after switch off before opening the unit.
- Slide the green switch lock **(E-j)** to unlock the unit head and housing.
- Turn the unit head counter-clockwise against the stop then carefully pull it out of the housing **(E-k)**.
- Loosen the screw **(F-l)**, remove the locknut **(F-m)**. Pull off the quartz glass including the rubber gasket **(F-n)** by a slight rotary movement (**Tip:** use work gloves).
- Carefully clean the quartz glass outer face with a soft cloth and SuperFish Pump & UVC Clean. After cleaning, thoroughly rinse the quartz glass with clean tap water and check for damage. Replace the quartz glass if it shows any damage (to prevent glass breakage). Quartz glass replacement kit for the Combi Clear 2000-4000 (Art. 06020810) and for the Combi Clear 6000 (Art. 06020812).
- The UV-lamp should be replaced annually, as the lamp may still burn but no longer emits enough UV radiation (maximum 8000 operating hours). Replacement lamp for Combi Clear 2000: SuperFish UV Clear PL-lamp 5 watt, G23-105 mm (Art. 06011005) for the Combi Clear 4000: SuperFish UV Clear PL-lamp 7 watt, G23-105 mm SP (Art. 06011013) and for the Combi Clear 6000: SuperFish UV Clear PL-lamp 11 watt, G23-167 mm SP (Art. 06011017).
- Remove the UV-lamp together with UV-tube clip **(G-o)** and tube protection ring **(G-p)** and remove the O-ring **(G-q)** from the unit head. Clean the unit head and O-ring and put the O-ring back onto the unit head.
- Insert the (replacement) UV-lamp with a UV-tube clip and tube protection ring in the fitting of the unit head **(G)**.
- Slide the quartz glass with the conical rubber gasket **(H-n)** gently over the UV-lamp and insert it in the unit head (grease the outside of the rubber gasket with some petroleum jelly).
- Slide the locknut **(I-m)** over the quartz glass and tighten it rigidly onto the unit head until the recess is positioned

over the screw hole. This requires some force (use work gloves).

- Place back the locking screw (I-I) to lock the locknut.
- Place the unit head with the fitted UV-lamp and quartz glass back into the housing. Turn it clockwise up to the stop and slide the green switch lock to the housing (J).
- To avoid UVC overheating, switch off the UVC device when no water is flowing past it.
- In the winter season, when the system is not used, the Combi Clear filter should be removed to avoid the risk of freezing.

Warranty conditions

2 years manufacturer's warranty on materials and construction defects. Devices must be returned complete with all components, accompanied with an official proof of purchase confirming a purchase date for any warranty claims. Incomplete devices of which parts are missing, and devices without proof of purchase are not eligible for warranty. After receiving and checking, we will determine whether the device will be repaired or replaced. For a device repaired or replaced under warranty, the remaining time of the original warranty period applies. Carefully read the instructions on installation, use and maintenance. Damage due to incorrect use, damage due to contamination or not cleaning the device, glass breakage and damage to the cord are not covered by the warranty. **Always keep the proof of purchase, without proof of purchase the warranty will be void!**



This symbol indicates that this product (if it is discarded) may not be disposed of with normal household waste. Instead it must be handed in at an official collection centre (e.g. HWRC). Or can be returned to the dealer when purchasing a similar new product. Follow the applicable rules in your country for the separate collection of electrical and electronic products. Separate collection and recycling are better for the environment, public health and reduces waste.



AQUADISTRI www.aquadistri.com

Vlietweg 8, NL-4791 EZ Klundert The Netherlands, info@aquadistri.com

Documents / Resources



[SuperFish 4000 Combi Clear Filter](#) [pdf] User Manual
4000 Combi Clear Filter, 4000, Combi Clear Filter, Clear Filter

References

- [Aquadistri | For A Successful Aquarium, Pond & Terrarium](#)

- [User Manual](#)

[Manuals+](#), [Privacy Policy](#)

This website is an independent publication and is neither affiliated with nor endorsed by any of the trademark owners. The "Bluetooth®" word mark and logos are registered trademarks owned by Bluetooth SIG, Inc. The "Wi-Fi®" word mark and logos are registered trademarks owned by the Wi-Fi Alliance. Any use of these marks on this website does not imply any affiliation with or endorsement.