



superbrightleds  
EZD-VCT-WM,  
EZD-4C8A  
Wireless LED  
Tunable White  
Wall Switch



# superbrightleds EZD-VCT-WM, EZD-4C8A Wireless LED Tunable White Wall Switch Instruction Manual

[Home](#) » [superbrightleds](#) » [superbrightleds EZD-VCT-WM, EZD-4C8A Wireless LED Tunable White Wall Switch Instruction Manual](#) 

## Contents

- [1 superbrightleds EZD-VCT-WM, EZD-4C8A Wireless LED Tunable White Wall Switch](#)
- [2 Parts Included](#)
- [3 Wall Switch](#)
- [4 Safety](#)
- [5 Set-Up Instructions](#)
- [6 Connection Diagram](#)
- [7 Operating the Wall Switch/Controller](#)
- [8 Cove Lighting Application](#)
- [9 FCC Statement](#)
- [10 FAQ](#)
- [11 Documents / Resources](#)
  - [11.1 References](#)
- [12 Related Posts](#)



**superbrightleds EZD-VCT-WM, EZD-4C8A Wireless LED Tunable White Wall Switch**



## Parts Included

- 1 – 868MHz LED Dimmer Wall Switch
- 1 – 3V CR2032 Battery with Tray
- 2 – Mounting Screws

## Wall Switch

Single Press	Turns light on/off. If the Controller Pairing Switch has been depressed, a single dial press on the Wall Panel Switch pairs the Switch to the Controller.
Double Press	Alternates between color temperature mode and dimming mode.
Left/Right Rotate	During color temperature mode, scrolls through cool white (dial left) to natural white (middle) to warm white (dial right). During dimming mode, controls LED intensity level.
Hold Press	Increases LEDs to maximum intensity. Dial down to set max brightness for color temperature mode.

### 1. On/Off/Color Temperature/Brightness Push Dial Push ON/OFF 1152W(36V)

Push dial for remotely activating/controlling light strips.

### 2. Color Gradient

Visual key representing specific dial colors, from cool white (dial left) to warm white (dial right).

### 3. Dimming Level

Visual key representing the dial brightness level.

## Controller

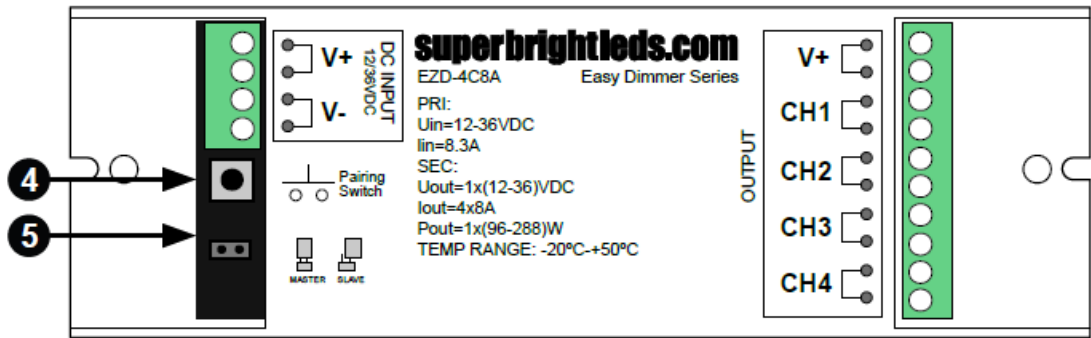
### 4. Pairing Switch

To pair Wall Switch to Controller, press the Controller Pairing Switch once and then press Wall Switch dial. Lights will blink once to indicate pairing. To unpair Wall Switch(es), press and hold Controller Pairing Switch until lights blink twice.

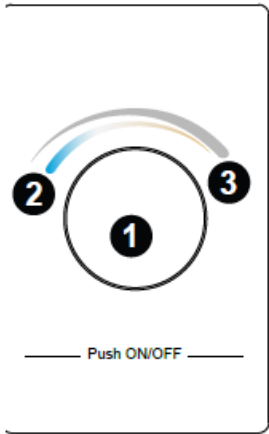
### 5. Master/Slave Jumper

Set Jumper to Master for main Controller. Master emits synchronization signal to Slave Controllers. Set Jumper to Slave to receive a synchronization signal from Master Controller. Use Master for the first Controller in each

zone. To achieve precise synchronization between Controllers in one zone, set additional Controllers to slave.



EZD-VCT-WM



EZD-VCT-WM Wall Switch	
Operating Voltage	3 VDC
Battery Size	CR2032
Operating Frequency	868 MHz
FCC ID#	2ACUQ2836

EZD-4C8A Controller		
Input Voltage	Current	Output Wattage
12~36 VDC	4 X 8A	384W(12V) 768W(24V) 1152W(36V)

### Safety

- DO NOT install with power applied to Controller.
- DO NOT expose the Wall Switch or Controller to moisture.

### Set-Up Instructions

#### Wall Switch

1. Follow illustrated steps below to remove the Battery Tray. Insert the 3V battery included with the Wall Switch.

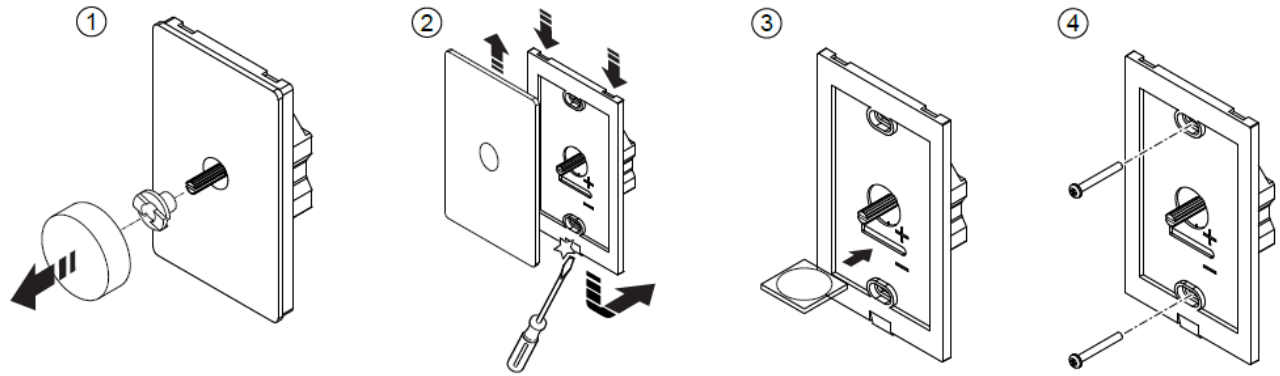
#### Controller

1. Make sure power to the Controller is disconnected.
2. Using a small flathead screwdriver, loosen the labeled terminal screws visible on the top of the Controller.
3. Matching light strip wires with labeled slots on the Controller, insert wires and tighten terminal screws. Be sure wire conductor, not wire insulation, is secured in terminal.
4. Turn power on and wait until light strip illuminates. If it does not come on, check light strips and wiring connections.

#### Wall Switch Installation Steps

1. Pull off dial and collar from front plate.
2. Using a flat head screwdriver, pry rear switch housing away from front plate.

3. Insert battery with tray into slot, matching the polarity on the battery with the slot labels.
4. Fasten wall switch using mounting screws.
5. Reinstall front plate, collar and dial.



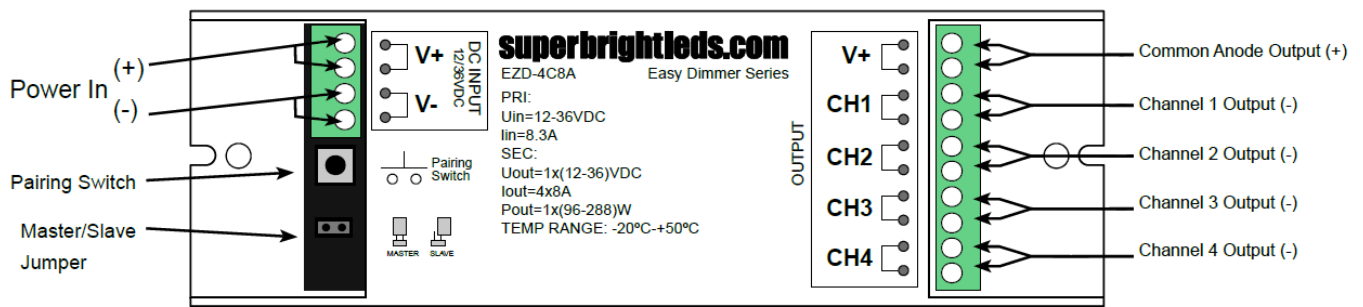
### Battery Safety

- Remove and immediately recycle or dispose of used batteries according to local regulations and keep away from children. Do NOT dispose of batteries in household trash or incinerate.
- Even used batteries may cause severe injury or death.
- Call a local poison control center for treatment information.
- Non-rechargeable batteries are not to be recharged.
- Do not force discharge, recharge, disassemble, heat above (manufacturer's specified temperature rating) or incinerate. Doing so may result in injury due to venting, leakage or explosion resulting in chemical burns.
- Ensure the batteries are installed correctly according to polarity (+ and -).
- Do not mix old and new batteries, different brands or types of batteries, such as alkaline, carbon-zinc, or rechargeable batteries.
- Remove and immediately recycle or dispose of batteries from equipment not used for an extended period of time according to local regulations.
- Always completely secure the battery compartment. If the battery compartment does not close securely, stop using the product, remove the batteries, and keep them away from children.

### WARNING

- **INGESTION HAZARD-** This product contains a button cell or coin battery.
- **DEATH** or serious injury can occur if ingested.
- A swallowed button cell or coin battery can cause Internal Chemical Burns in as little as 2 hours.
- **KEEP** new and used batteries **OUT OF REACH** of **CHILDREN**
- Seek immediate medical attention if a battery is suspected to be swallowed or inserted inside any part of the body-

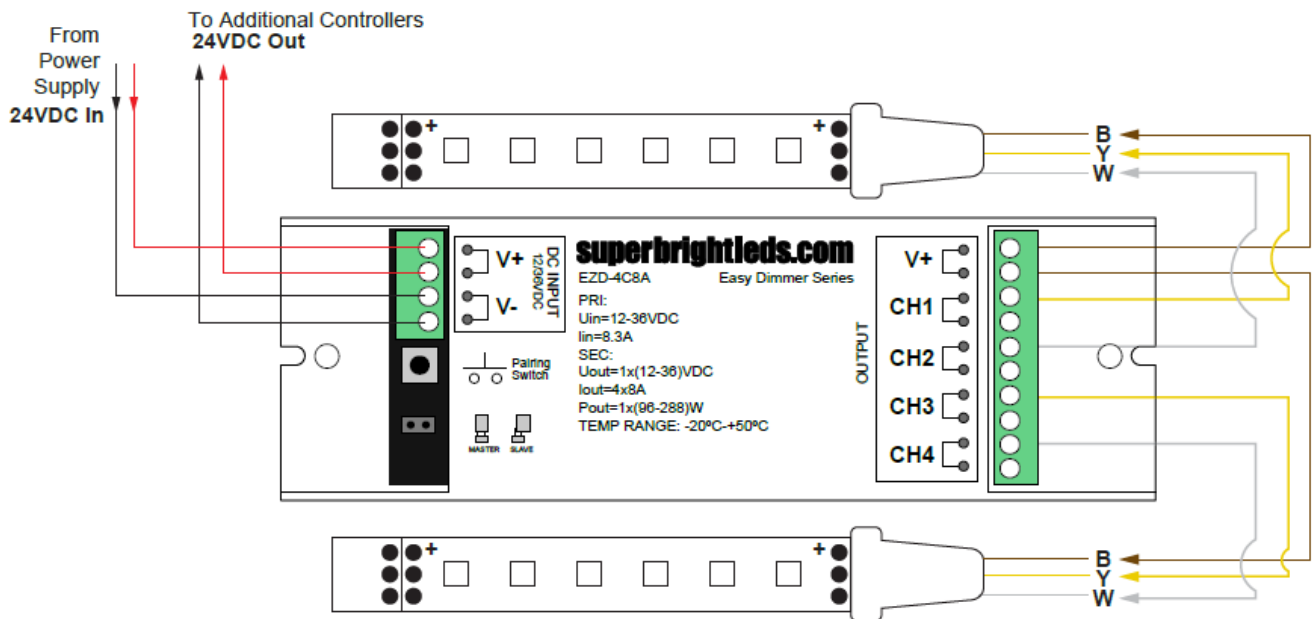
### Connection Diagram



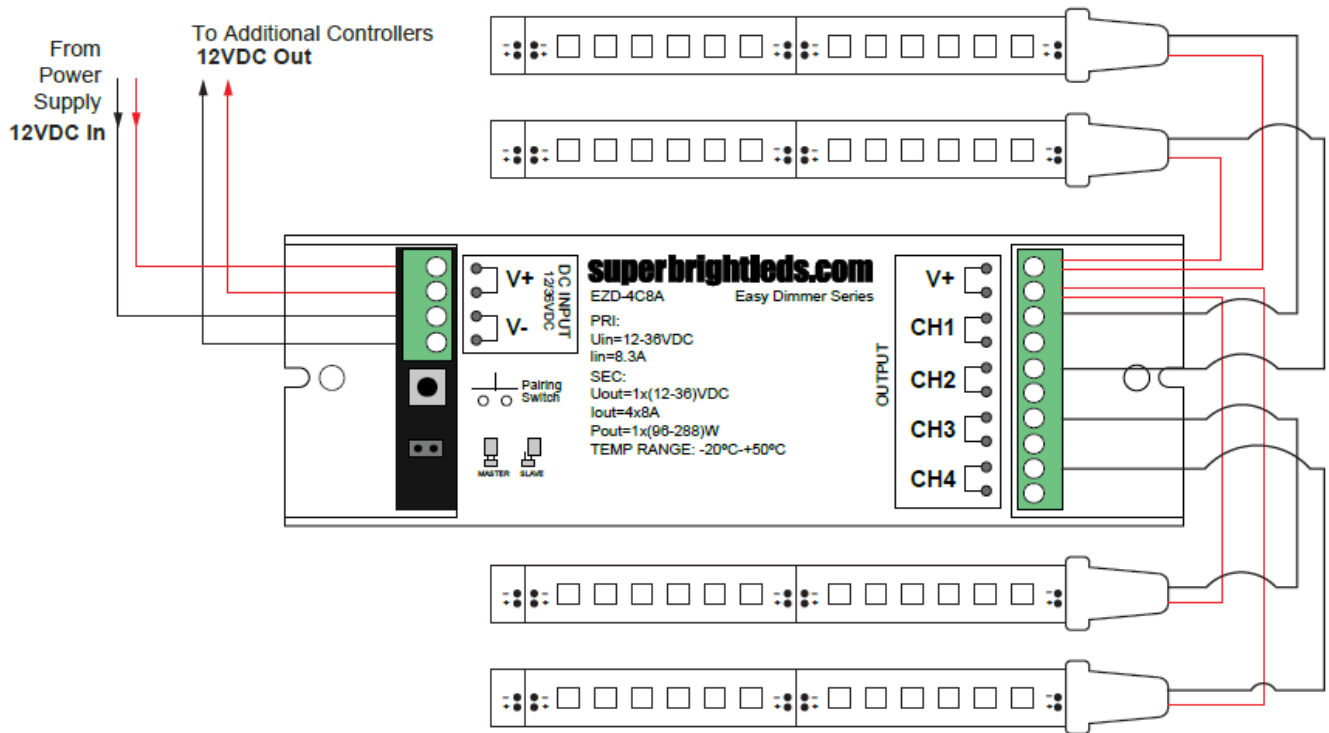
CH1 and CH3 are Warm White Channels  
CH2 and CH4 are Cool White Channels

## Example Diagrams

### 1. Tunable White 24VDC Application / EZD-4C8A



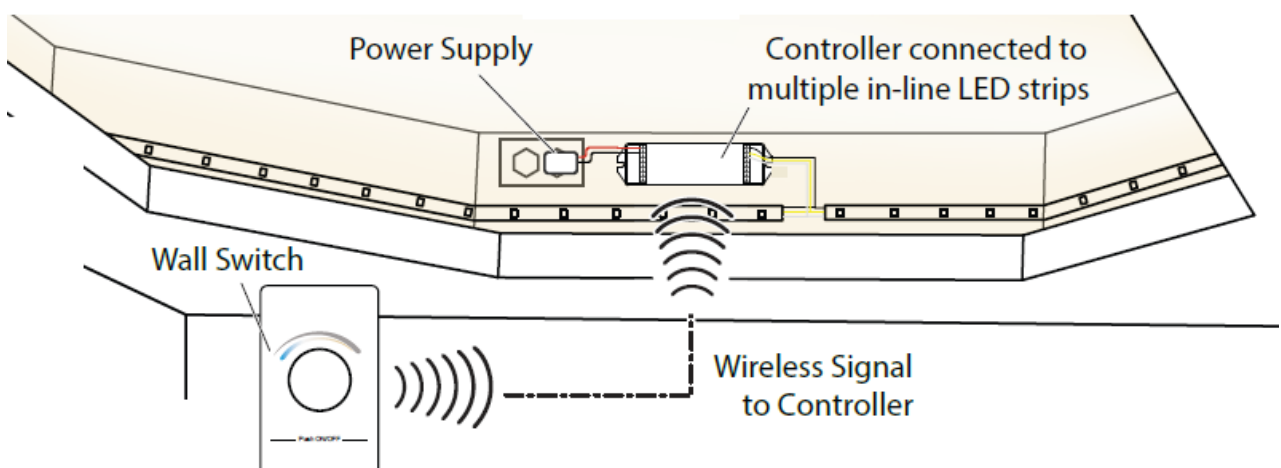
### 2. Tunable White 12VDC Application EZD-4C8A



## Operating the Wall Switch/Controller

1. Press "Pairing Switch" button on the Controller. Immediately press the dial on the Wall Switch to pair it to the Controller. The LED lights wired to the Controller will blink when the pairing is complete.
2. Multiple Wall Switches can be paired to a Controller, and Wall Switches can be paired to multiple Controllers. If multiple Controllers paired to a Wall Switch are not in sync, unpair and then pair until Controllers and lights are in sync.

## Cove Lighting Application



## FCC Statement

This device complies with part 15 of the FCC Rules. Operation is subject to the following two conditions:

1. This device may not cause harmful interference, and
2. This device must accept any interference received, including interference that may cause undesired operation.

Any changes or modifications in construction of this device which are not expressly approved by the party responsible for compliance could void the user's authority to operate the equipment.

Rev Date: V2 02/14/2025

4400 Earth City Expy, St. Louis, MO 63045 [866-590-3533](tel:866-590-3533) [superbrightleds.com](http://superbrightleds.com)

## FAQ

- **Q: What should I do if the light strip does not illuminate after installation?**

A: Check the light strips and wiring connections to ensure they are properly connected. If the issue persists, contact customer support for further assistance.

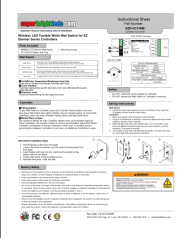
- **Q: How do I pair the Wall Switch to the Controller?**

A: If the Controller Pairing Switch has been depressed, a single dial press on the Wall Panel Switch pairs the Switch to the Controller.

- **Q: What should I do in case of battery safety concerns?**

A: If you have any concerns about battery safety, stop using the product, remove the batteries, and keep them away from children.

## Documents / Resources

	<p><a href="#">superbrightleds EZD-VCT-WM, EZD-4C8A Wireless LED Tunable White Wall Switch</a> [pdf] I nstruction Manual</p> <p>EZD-VCT-WM, EZD-4C8A, EZD-VCT-WM EZD-4C8A Wireless LED Tunable White Wall Switch, EZD-VCT-WM EZD-4C8A, Wireless LED Tunable White Wall Switch, LED Tunable White Wall S witch, Tunable White Wall Switch, White Wall Switch, Wall Switch, Switch</p>
--	--

## References

-  [LED Lighting For Everything | Super Bright LEDs](#)
- [User Manual](#)

### Manuals+. Privacy Policy

This website is an independent publication and is neither affiliated with nor endorsed by any of the trademark owners. The "Bluetooth®" word mark and logos are registered trademarks owned by Bluetooth SIG, Inc. The "Wi-Fi®" word mark and logos are registered trademarks owned by the Wi-Fi Alliance. Any use of these marks on this website does not imply any affiliation with or endorsement.