



super bright leds IT5-NW24 Linkable Linear LED Light Fixture User Manual

[Home](#) » [super bright leds](#) » super bright leds IT5-NW24 Linkable Linear LED Light Fixture User Manual 

superbrightleds.com

User Manual

Part Number:

IT5-NW24

IT5-NW36

IT5-WW36

Important: Read all instructions prior to installation.

Linkable Linear LED Light Fixture

Contents

- [1 Safety and Notes](#)
- [2 Parts Included](#)
- [3 Accessories \(not included\)](#)
- [4 Max Run¹](#)
- [5 Specifications](#)
- [6 Installation Instructions](#)
- [7 Accessories](#)
- [8 Dimensions](#)
- [9 Wiring Diagram](#)
- [10 Documents / Resources](#)
- [11 Related Posts](#)

Safety and Notes



- The product should be installed by a certified electrician in accordance with applicable national, state, and local electrical codes.
- To reduce the risk of electric shock, ensure that the main power source is switched off before performing any installation or wiring procedures.
- The product is for use in dry, indoor locations only.
- When installing multiple lights in a run, make sure to check for voltage drop. Minimum voltage must be maintained to avoid damaging lights.

Parts Included

- 1 – Integrated T5 Tube
- 1 – Powercord 6"
- 2 – Mounting Brackets
- 1 – Tube Endcap
- 2 – Mounting Bracket Screws
- 1 – Tube to Tube Butt Connector

Accessories (not included)

- 30cm Interconnect (IT-I30)
- 100cm Interconnect (IT-I100)
- 100cm Powercord (IT-P100)

Max Run¹

Voltage	IT5-xW24	IT5-xW36
12	5	3
24	10	6
36	15	9

¹Do does not exceed 5 A total load if combining multiple lengths of lights in one run.

Specifications

IT5-NW24	
Intensity	800 lumen
Operating Voltage Range	12-36 VDC
Beam Angle	140 degree
LED Type / Quantity	2835 SMD / 48 pcs
Color Temperature	4000K
CRI	73 CRI
Operating Temperature	-4 – 131°F (-20 – 55 °C)
Total Power Consumption	10 Watts
IP Rating	IP40
Fixture Weight	4.2 oz (119 g)
Warranty	2 year

ITS-NW36	
Intensity	1300 lumen
Operating Voltage Range	12-36 VDC
Beam Angle	140 degree
LED Type / Quantity	2835 SMD / 72 pcs
Color Temperature	4000K
CRI	73 CRI
Operating Temperature	-4 – 131°F (-20 – 55 °C)
Total Power Consumption	16 Watts
IP Rating	IP40
Fixture Weight	5.6 oz (158 g)
Warranty	2 year

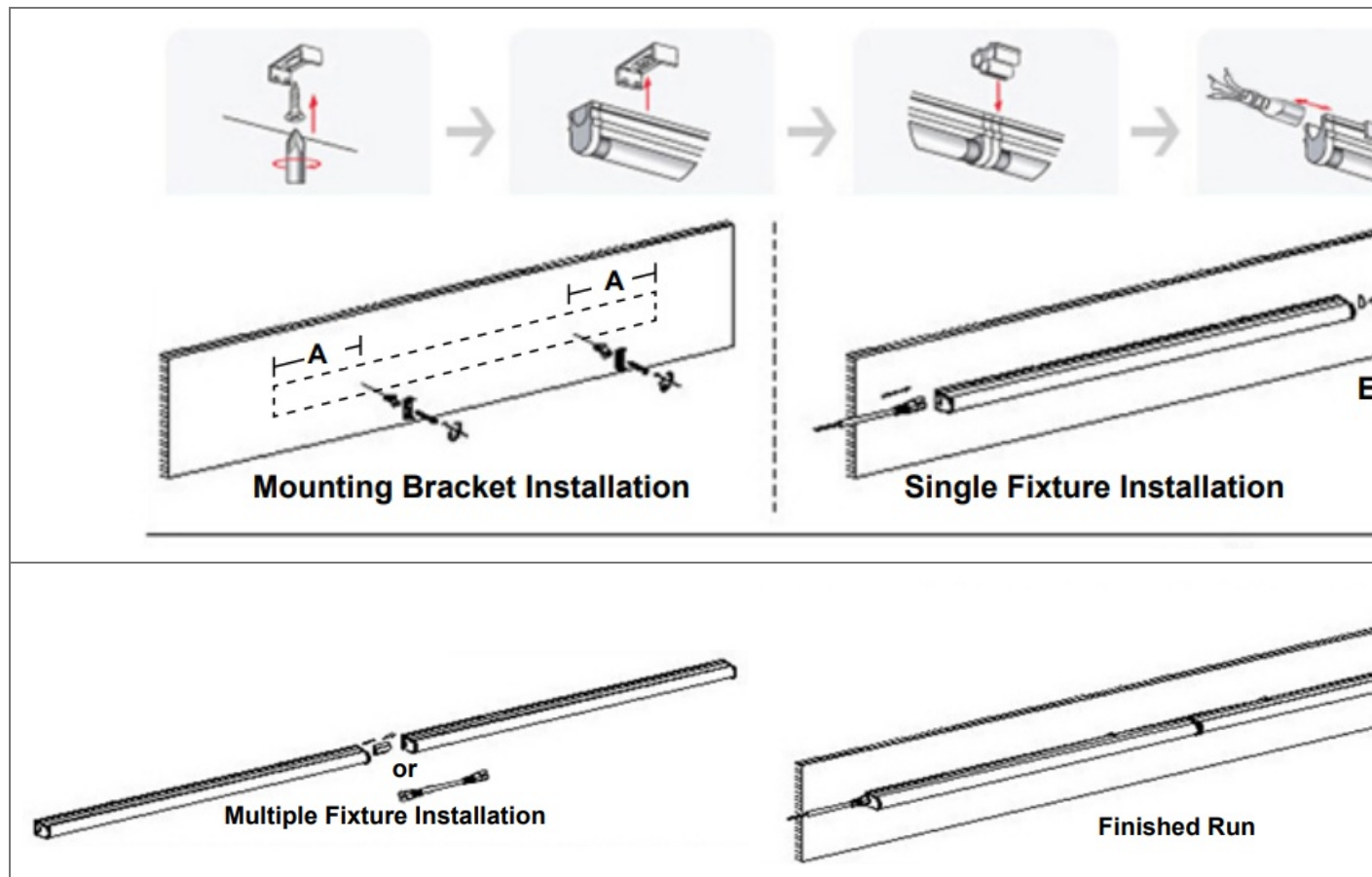
IT5-WW36	
Intensity	1300 lumen
Operating Voltage Range	12-36 VDC
Beam Angle	140 degree
LED Type / Quantity	2835 SMD / 72 pcs
Color Temperature	3000K
CRI	73 CRI
Operating Temperature	-4 – 131°F (-20 – 55 °C)
Total Power Consumption	16 Watts
IP Rating	IP40
Fixture Weight	5.6 oz (158 g)
Warranty	2 year

Installation Instructions

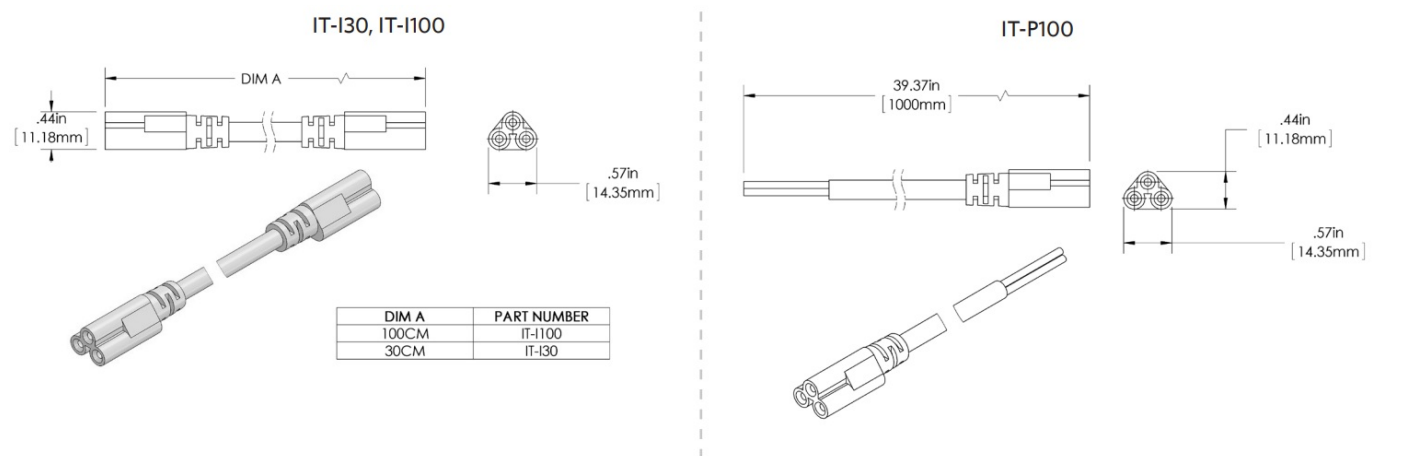
1. Drill pilot holes for mounting screws and install mounting clips approximately 8” from the ends of the fixture.
This will allow the fixtures to slide into position while still maintaining adequate support. Repeat for all fixtures in

the run.

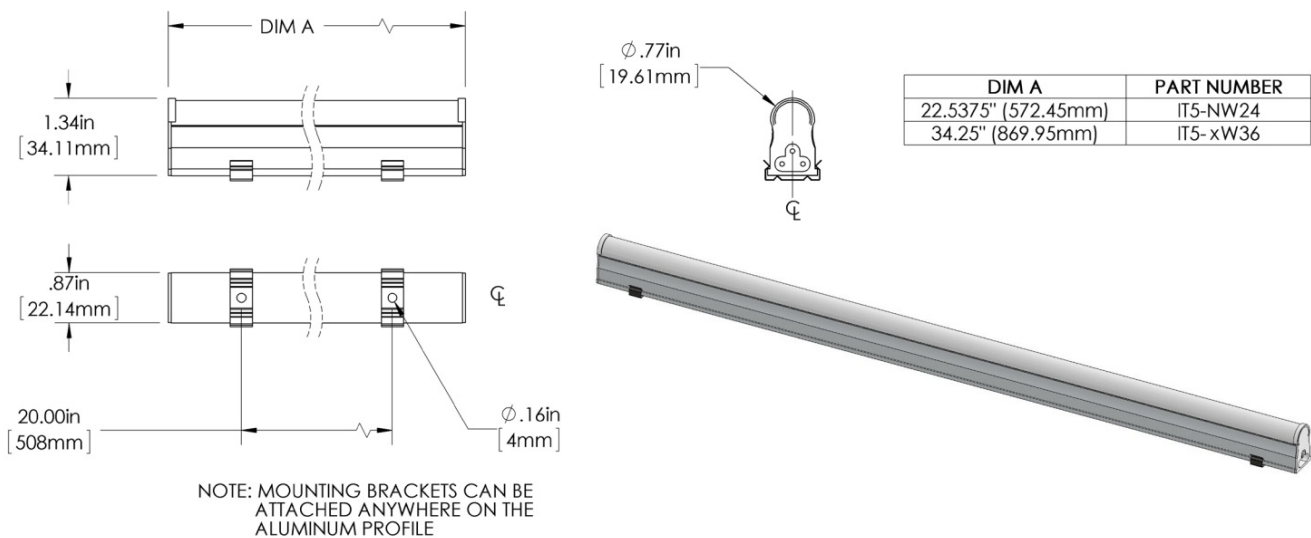
2. Snap fixtures in place. Make connections between fixtures using supplied butt connector or optional interconnects.
3. Use tube end cap to cover unused power connector on the last fixture in the run. **Mounting Bracket Installation**
Single Fixture Installation
4. Connect the power cord to the 12–24VDC power source and plug it into the first light in the run.



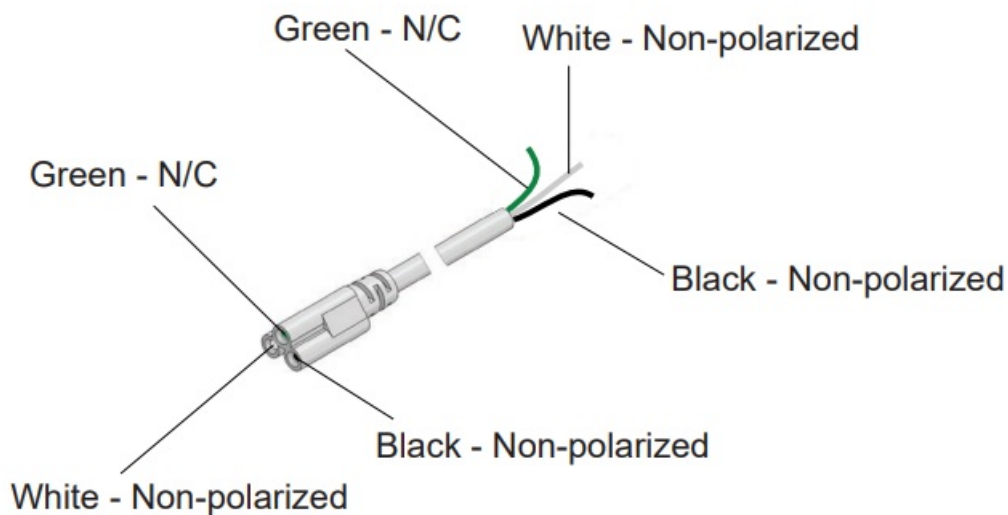
Accessories



Dimensions



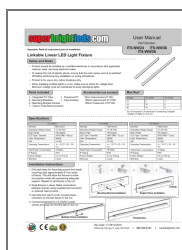
Wiring Diagram



Rev Date: V1 08/12/2016
 4400 Earth City Expy, St. Louis, MO 63045
 866-590-3533
superbrightleds.com



Documents / Resources



[super bright leds IT5-NW24 Linkable Linear LED Light Fixture](#) [pdf] User Manual
 IT5-NW24, IT5-NW36, IT5-WW36, Linkable Linear LED Light Fixture

