




SUPER BRIGHT LEDS IT5 120 V Series Linkable Linear LED Light Fixture User Manual

[Home](#) » [super bright leds](#) » **SUPER BRIGHT LEDS IT5 120 V Series Linkable Linear LED Light Fixture User Manual** 

SUPER BRIGHT LEDS IT5 120 V Series Linkable Linear LED Light Fixture



Contents

[1 Safety and Notes](#)

[2 Max Run](#)

[3 Accessories \(not included\)](#)

[4 Installation Instructions](#)

[5 Dimensional Drawings](#)

[6 Documents / Resources](#)

[6.1 References](#)

[7 Related Posts](#)

Safety and Notes

- This product should be installed in accordance with applicable national, state, and local electrical codes.
- To reduce the risk of electric shock, ensure that the main power source and circuit breakers are switched off before performing any installation or wiring procedures.
- This product is for use in dry, indoor locations only.
- Ensure all mounts are securely attached and will support the weight of the fixture. Failure to properly support the fixture during installation may result in damage or injury, for which the manufacturer does not assume responsibility.
- The total length of wire interconnects in one run should not exceed 300 ft. The total number of lights in a run must not exceed the following:
- Endcap and mounting clips are included with each light

Max Run

Max Run	
IT5-NW12-120V	15
IT5-NW24-120V	13
IT5-NW36-120V	10
IT5-NW48-120V	8

Accessories (not included)

IT-P15 – 6" [15.24cm] AC input wire

IT-I30 – 11.8" [30cm] Interconnect

IT-I100 – 39.4" [100cm] Interconnect

IT-P100 – 39.4" [100cm] AC wire input wire

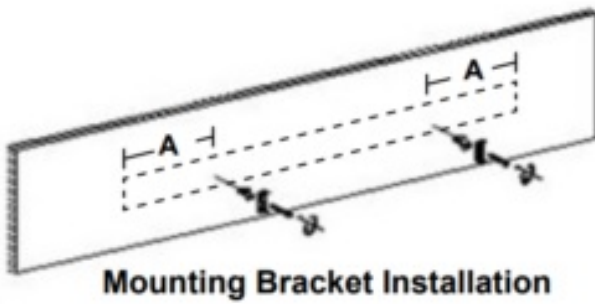
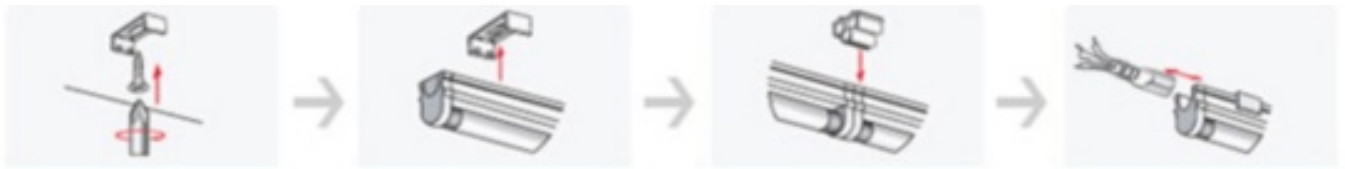
IT-P180 – 6-foot AC input cable (hardwire)

IT-PC – 6-foot AC input cable (5-15P plug)

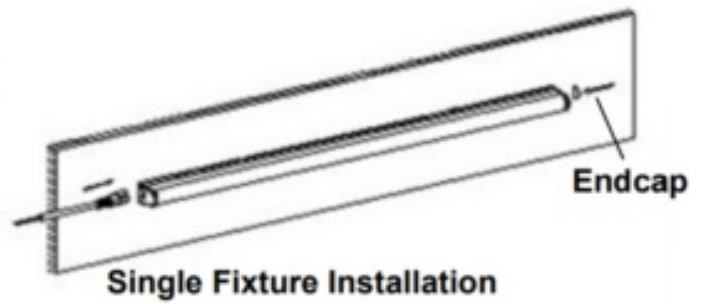
Installation Instructions

1. Drill pilot holes for mounting screws (using anchors if necessary) and install mounting clips.
2. Snap fixtures into place using supplied butt connector between any adjoining fixtures.
3. Use tube end cap to cover connector at end of run.
4. Connect supplied cable to the first light in the run and then to power. Apply power from one side only.

Mounting Bracket Installation (DIM A)	Part Number
3 in [7.62cm]	IT5-NW12-120
6 in [15.24cm]	IT5-NW24-120
9 in [22.86cm]	IT5-NW36-120
12 in [30.48cm]	IT5-NW48-120



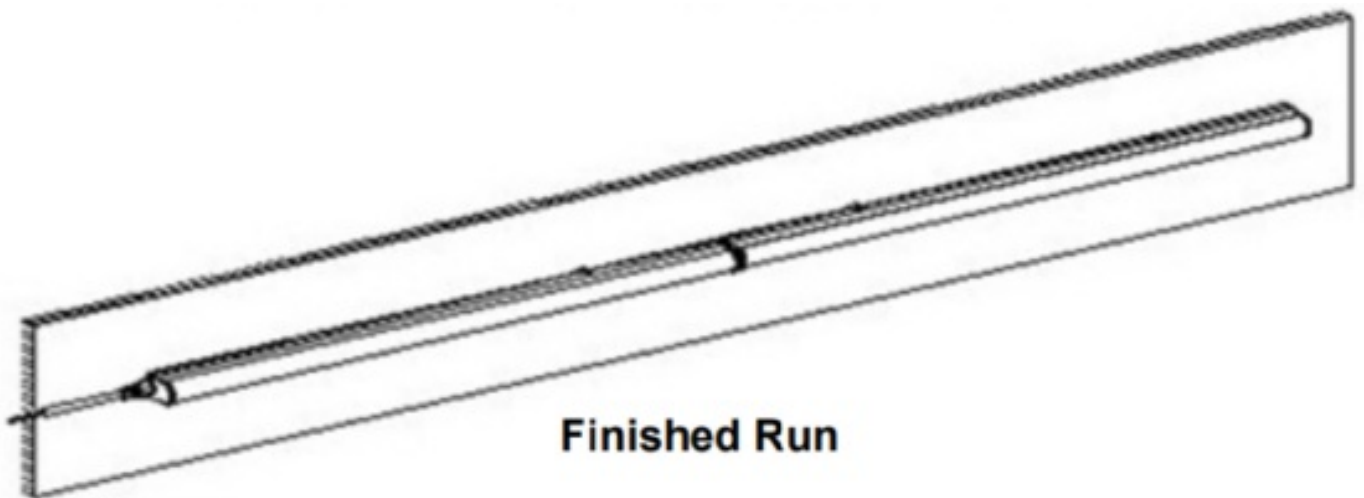
Mounting Bracket Installation



Single Fixture Installation



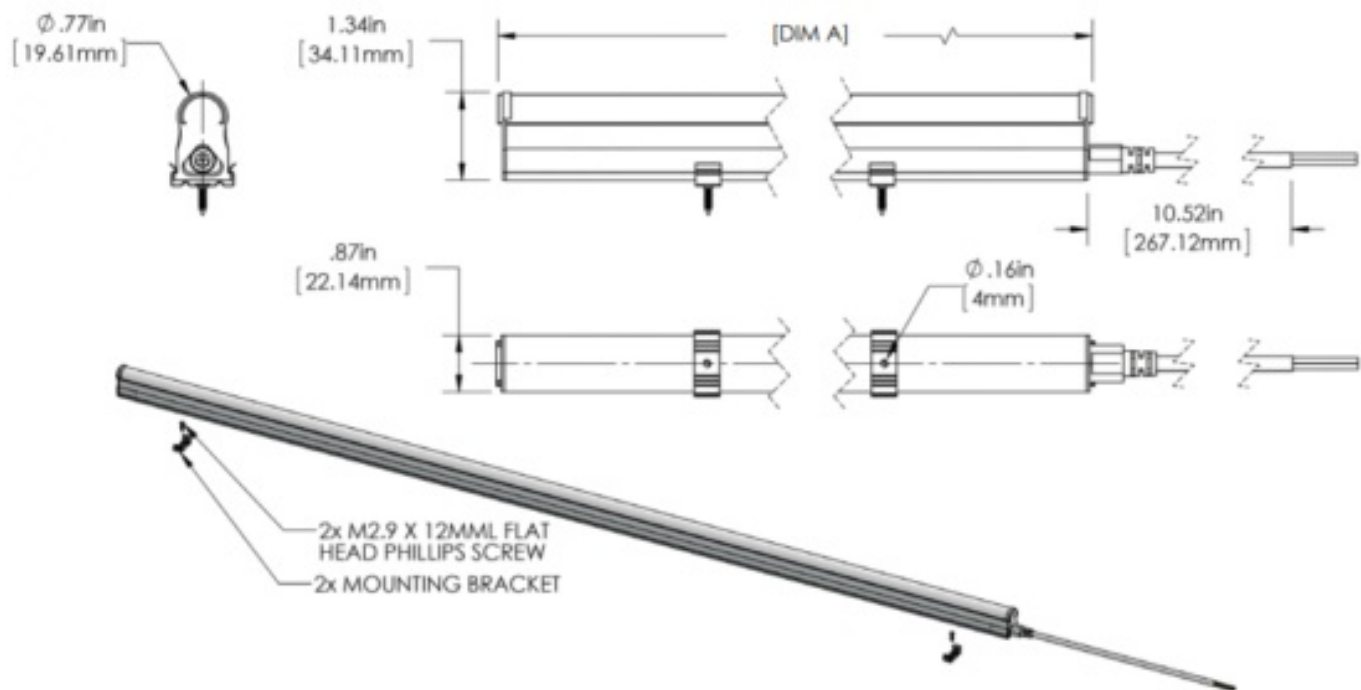
Multiple Fixture Installation



Finished Run

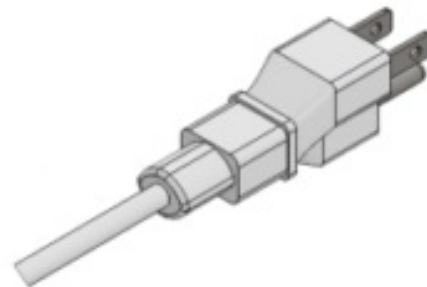
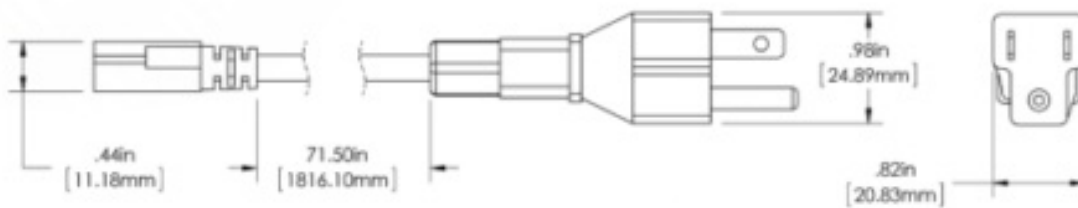
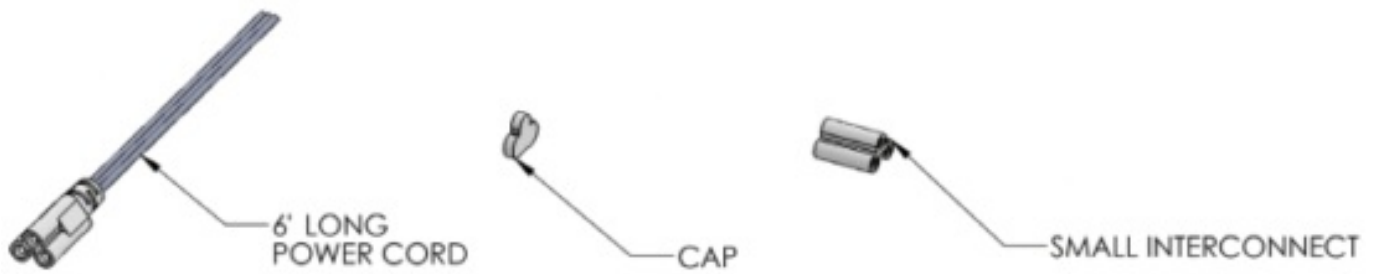
Dimensional Drawings

PRODUCT SHOWN WITH OPTIONAL POWER CORD(S).

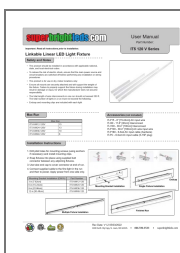


DIM A	Part Number
11.85 in [300.99mm]	IT5-NW12-120
22.54 [572.52mm]	IT5-NW24-120
34.35 in [872.49mm]	IT5-NW36-120
46.44 in [1179.51mm]	IT5-NW48-120

INCLUDED PARTS



Documents / Resources



[SUPER BRIGHT LEDS IT5 120 V Series Linkable Linear LED Light Fixture](#) [pdf] User Manual
IT5 120 V Series, Linkable Linear LED Light Fixture, IT5 120 V Series Linkable Linear LED Light Fixture

References

-  [LED Lighting For Everything | Super Bright LEDs](#)

Manuals+.