



SUNYARD S200 Smart POS Terminal Instruction Manual

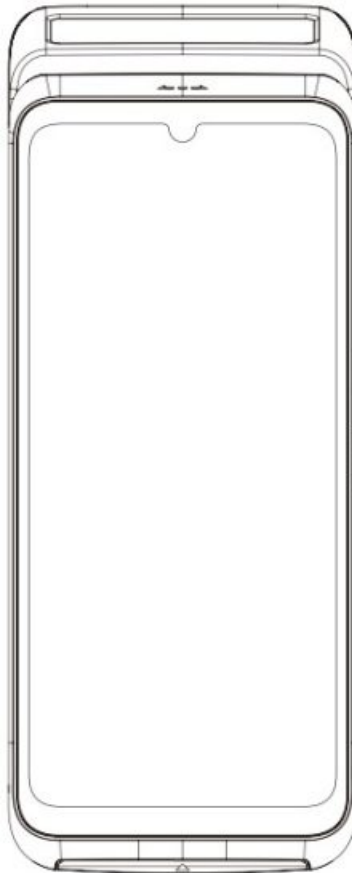
[Home](#) » [SUNYARD](#) » SUNYARD S200 Smart POS Terminal Instruction Manual 

SUNYARD

Product Manual

Service Hotline: 0086-571-56686126

S200 Android POS Terminal



Hangzhou Sunyard Technology Co., Ltd.

Contents

- 1 S200 Smart POS Terminal
- 2 Basic Configuration
- 3 Printing Paper Installation
- 4 Installation Instruction
- 5 Battery Installation
- 6 Specification
- 7 Instruction for installation and usage
- 8 Password protection instruction
- 9 Parking list
- 10 Documents / Resources
 - 10.1 References

S200 Smart POS Terminal

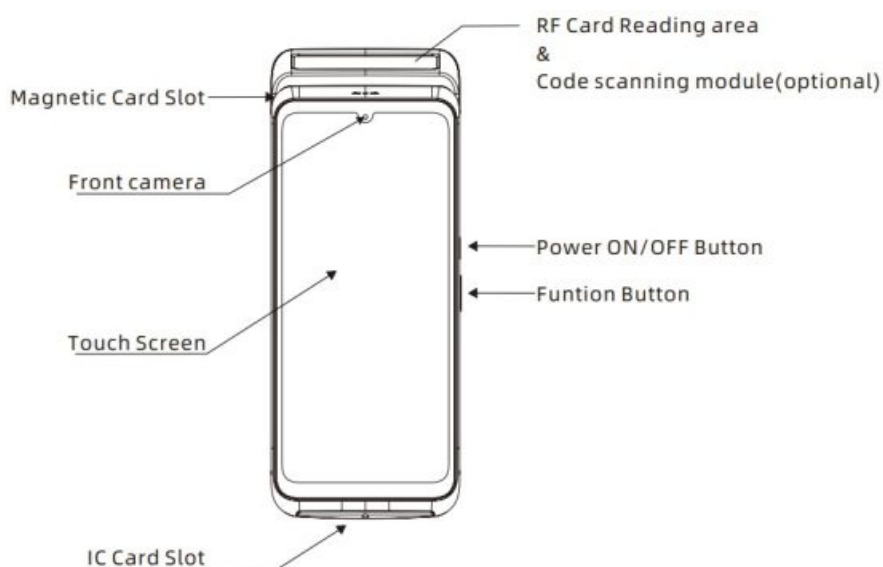
User Instruction

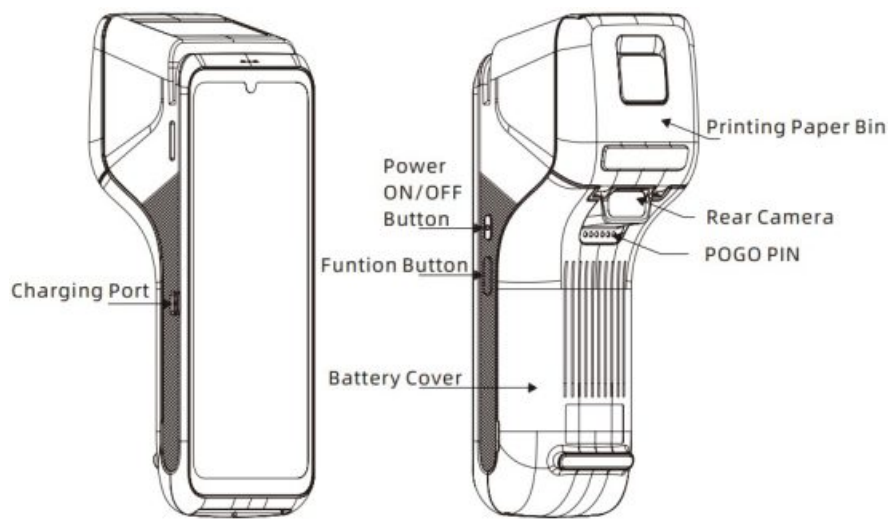
Thank you very much for choosing Sunyard Technology products, When using, please read this user instruction so that you will know more about the performance, Please keep this user instruction for your reference in case you are in trouble while using the terminals.

Our company will try our best to adopt new technologies, new components and new software to improve our products, We have right to make the changes without prior notice, The feature, function or the operation described in this user instruction maybe a little different from the performance of the products that selling all over the world,.sometimes, picture is only the prototype, Please ask for the right documents from our company or agents when your are using the user instruction.

The device must be installed by our after-sale engineers. Our company will not take the liability of any consequences caused by unauthorized changes to the device, replacement of the connected equipment and cables not as specified.

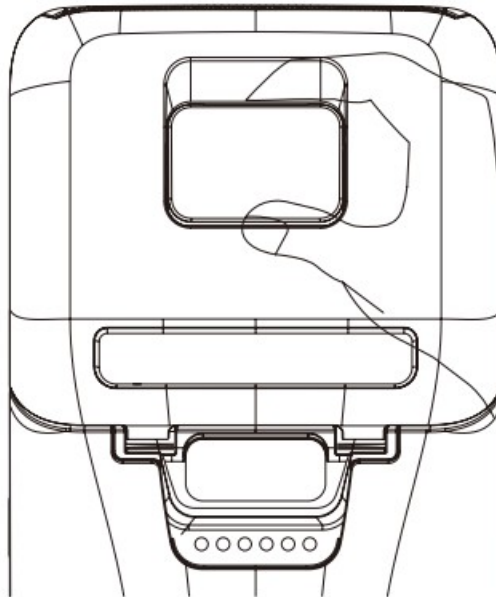
Basic Configuration





Printing Paper Installation

Step 1: Open the printing paper cover, and keep the cover opened



Step 2: Put paper in the bin, and notice the position and direction of the paper, and keep part of the paper outside the bin

Step 3: Close the printing paper bin

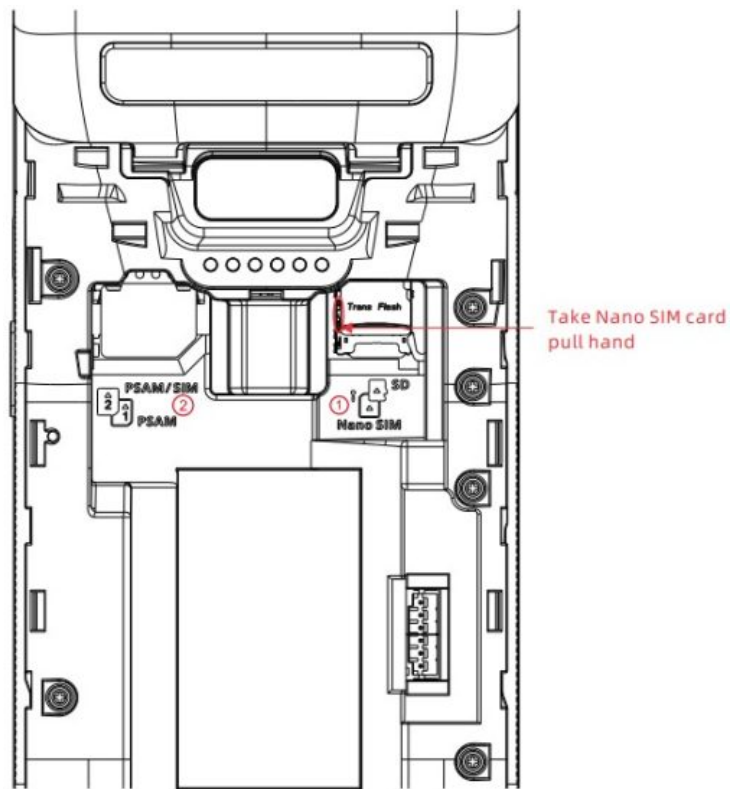
Installation Instruction

(1) SIM card and SD card installation

Step 1: Open the battery cover at the back of the terminal

Step 2: ① Two layers SIM card slot, insert the SD card at the below layer and insert the SIM card at the upper layer.

② Insert SIM card (the lower layer of SIM card is PASM card).

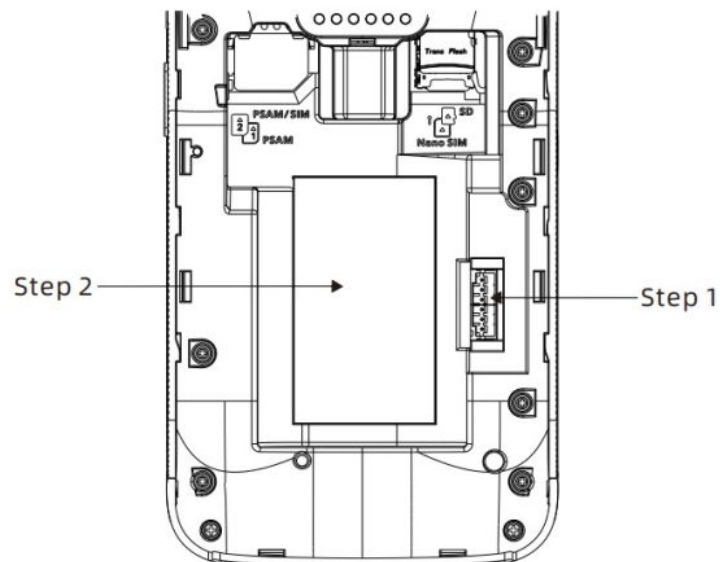


Note SIM card in right place of SIM card slot.

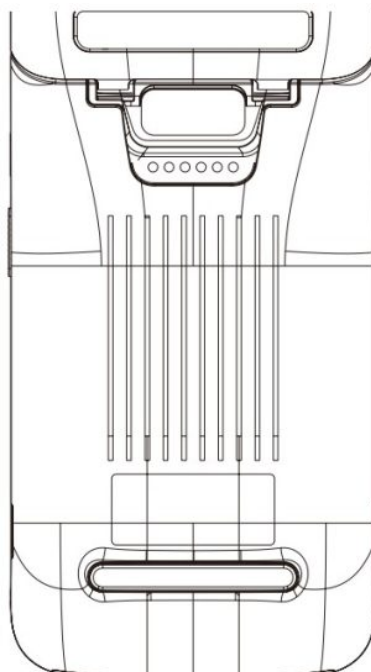
Battery Installation

Step 1: Insert the connector of the battery

Step 2: Put the battery inside



Step 3: Close the battery cover



List of toxic and harmful substances or elements

| Parts Name | Toxic and harmful substances or elements | | | | | |
|---------------------|--|----|----|------|-----|------|
| | Pb | Hg | Cd | Cr6+ | PBB | PBDE |
| PCBA | × | ○ | ○ | ○ | ○ | ○ |
| Housing | ○ | ○ | ○ | ○ | ○ | ○ |
| Buttons on Terminal | ○ | ○ | ○ | ○ | ○ | ○ |
| LCD of Terminal | × | ○ | ○ | ○ | ○ | ○ |
| Battery | × | ○ | ○ | ○ | ○ | ○ |

○: It means that the content of this toxic and harmful substance in all homogeneous materials of the component is below the limit specified in standard SJ/T 11363-2006

×: Indicates that the content of the toxic and harmful substance in at least one homogeneous material of the component exceeds the limit specified in standard SJ/T 11363-2006

Notice:

1. Most of the components of this product are made of non-toxic and harmless environmental protection materials. The components containing toxic and harmful substances or elements cannot be replaced by toxic and harmful substances or elements due to the limitation of global technological development.

2. The environmental data for reference is obtained by testing in the normal use and storage environment required by the product, such as temperature and humidity, etc.

Product Certificate

Surveyor: PASS 1

Supervisor: Hangzhou Sunyard Technology Co., Ltd.

Website: <http://www.sydttech.com.cn>

Customer Retention

| | |
|--------------------|---------------------------|
| Product Name | 5200 Android POS Terminal |
| Invoice Number | |
| Date of Production | |
| Date of Purchase | |
| Purchase Company | |
| Selling Company | |

Please keep the retention form properly and read the warranty terms in detail.
Please show the retention form when it is needed.



HANGZHOU SUNYARD TECHNOLOGY CO.,LTD

Address: Sunyard Science & Technology Building, No. 3888,
Jiangnan Avenue, Binjiang District,
Hangzhou, China
Postcode: 310053
Telephone: 0086-571-56686126
Fax: 0086-571-56686000

Receipt of Warranty Card

(Please clip the completed form and send it back to Sunyard Company)

| | |
|------------------------|---------------------------|
| Product Name | 5200 Android P05 Terminal |
| Invoice Number | |
| Date of Production | |
| Date of Purchase | |
| Purchase Company | |
| Address of the Company | |
| Telephone Number | |
| Contact | |
| Selling Company | |



HANGZHOU SUNYARD TECHNOLOGY CO.,LTD

Address: Sunyard Science & Technology Building, No. 3888,
Jiangnan Avenue, Binjiang District,
Hangzhou, China
Postcode: 310053
Telephone: 0086-571-56686126
Fax: 0086-571-56686000



HQ622010068Q0

Warranty

FCC regulatory conformance

This device complies with Part 15 of the FCC Rules. Operation is subject to the following two conditions:

- (1) This device may not cause harmful interference.
- (2) This device must accept any interference received, including interference that may cause undesired operation.

NOTE: This equipment has been tested and found to comply with the limits for a Class B digital device, pursuant to part 15 of the FCC Rules. These limits are designed to provide reasonable protection against harmful interference in a residential installation.

This equipment generates uses and can radiate radio frequency energy and, if not installed and used in accordance with the instructions, may cause harmful interference to radio communications. However, there is no guarantee that interference will not occur in a particular installation. If this equipment does cause harmful interference to radio or television reception, which can be determined by turning the equipment off and on, the user is encouraged to try to correct the interference by one or more of the following measures:

- Reorient or relocate the receiving antenna.
- Increase the separation between the equipment and receiver.
- Connect the equipment into an outlet on a circuit different from that to which the receiver is connected.
- Consult the dealer or an experienced radio/TV technician for help

NOTE: The manufacturer is not responsible for any radio or TV interference caused by unauthorized modifications to this equipment. Such modifications could void the user's authority to operate the equipment.

RF Exposure

The SAR limit adopted by FCC is 1.6 W/kg averaged over one gram of tissue. The highest SAR value reported to the FCC for this device type complies with this limit. The highest SAR value reported to the FCC for this device type when using in portable exposure conditions is 1.45 W/kg.

Declaration of Conformity

Hereby, Siden, Inc. declares that the radio equipment type S200 of Smart POS Terminal is in compliance with Directive 2014/53/EU and this product is allowed to be used in all EU member states. The full text of the EU declaration of conformity is available at the following internet address: <https://www.sydtech.com.cn/>

Manufacturer information:

Company name: Hangzhou Sunyard Technology Co., Ltd.

Address Sunyard Science & Technology Building, 3888 Jiangnan Ave., Binjiang Dist., Hangzhou, China

Operation temperature: 0~45°C

Operation frequency (Max power)

| Radio | Frequency | Max. power |
|-----------------------|---------------------------|---------------------------|
| Bluetooth | 2402-2480MHz | 8.9dBm(EIRP) |
| WiFi 2.4G | 2412-2472MHz | 17.9dBm(EIRP) |
| WiFi 5G | 5150-5250MHz | 15.4dBm(EIRP) |
| | 5725-5850MHz | 13.9dBm(EIRP) |
| GSM | 900MHz | 33d Bm(Conducted) |
| | 1800MHz | 30d Bm(Conducted) |
| WCDMA | Bands 1/8 | 23.5dBm/24dBm (Conducted) |
| LTE FDD | Bands 1/3/7/8/20/28 | 24d Bm(Conducted) |
| LTE TDD | Bands 38/40 | 24d Bm(Conducted) |
| NFC | 13.56MHz | 55.2d BpV/m @3m |
| Satellite positioning | support BDS, GPS, GLONASS | |

RF exposure statement

For the countries that adopt the SAR limit of 2.0W/kg(body) and 4.0W/kg(Limbs) over 10 grams of tissue. The device complies with RF specifications when used at a distance of 5mm from your body and 0mm from your Limbs. The highest reported SAR value:

body SAR: 1.37W/kg, Limbs SAR: 2.811W/kg

The device is restricted to indoor use when operated in the European Community using frequency 5150MHz-5250MHz to reduce the potential for interference.

Restriction in BE, BG, CZ, DK, DE, EE, IE, EL, ES, FR, HR, IT, CY, LV, LT, LU, HU, MT, NL, AT, PL, PT, RO, SI, SK, FI, SE, UK(NI).

User Instruction

1. POWER ON/OFF instruction

POWER ON: Press  ON/OFF button for 3 seconds

POWER OFF: Press  ON/OFF button for 3 seconds, and then press power off showed on the screen.

2. Magnetic card

Put the magnetic card into the magnetic card slot to read, magnetic side towards to the LCD(refer to the sign for card identification), keep smooth, uniform when swiping the card.

3. Contact IC card

Insert IC card into the IC card slot, the side with chip towards to keypad, please refer to card identification

4. Contactless card

Put the contactless card near to the contactless card reader zone on the terminal, and make contactless card transaction. Put one contactless card every time to avoid conflict.

5. Charging

Connect the USB cable to terminal and the 5V2A power adaptor to charge.

Specification

| Item | Specification |
|-------------------------|---|
| CPU | ARM Quad-core Cortex A53 processor, 64-bit secure processor |
| Memory | RAM-2GB LPDDR, Flash-32GB eMMC RAM-4GB LPDDR, Flash-64GB eMMC (Optional) |
| Operation System | Android 13, Secure Payment System |
| Display | 6.7-inch 720*1600 iPS Capacitive multi-touch screen |
| Extended Storage | Micro SD card, Max support 32G |
| PINPad | Built-in password keypad, Conform to ANSI X9.8/1509564, ANSI X9.9/15008731 standard Support Master Key/Session Key, Fixed, DUK PTetc PIN protection technology, Support DES, 3DES, RSA, SHA-256 and AES etc algorithm |
| Touch Screen | Capacitive touch screen, support e-signature |
| IC Card Reader | Conform to 1507816, PBOC3.0 and EMV4.2 LEVEL1&2 standard |
| Magnetic Card Reader | 1Support 1507811 1/2/3 track, Bi-directional reading |
| Contactless Card Reader | Support ISO/EC 14443 Type A&B, Mifare card, conform to QPBOC, Mastercard Contactless and Paywave standard |
| Rear Camera | 5MP AF with auto flash & auto focus (Optional:8MP/13MP) Supports 1 D/2D code scanning |
| Front Camera | 2MP,FF Supports 1D/2D code scanning |
| Physical interface | USB Type-C OTG, compatible with USB2.0 HS standard 1*PSAM card slot, conform to 1507816 2*SIM for wireless communication network identification |
| Indicator Light | / |
| Buzzer | Built-in buzzer, Speaker and microphone |
| Printer | Built-in high speed thermal printer Printing speed:>80mm/s Paper roll diameter: 40mm, width:58mm |
| GPS | Support GPS / A-GPS / GLONASS / Beidou |
| Battery | 3350mAh/7.2V |
| Communication | 4G,3G and 2G, Wi-Fi, and hot spot, Bluetooth |
| Power Adaptor | Input: 110-240VAC, 50Hz/60Hz,0.5A Output: 5V DC/2A USB Type-C interface |
| Environmental Conftion | Operating temperature: 0~45°C Storage Temperature: -20°~70°C Humidity: 5%~90% (Non-condensing) |

Instruction for installation and usage

1. Please use the terminal under the specified voltage range, not use too low or too high voltage.

2. Make sure the connection is correct when connecting to the host.
3. Don't damage the cable; if the cable is damaged, do not use it.
4. Put away from the place with direct sunlight, high temperature, moist, dusty or highly corrosive gas.
5. Put away from liquid; do not use terminal at the place where the water may wet or enter into the terminal; do not operate the terminal with wet hand.
6. It is strictly prohibited to open the terminal without permission, otherwise the terminal will be triggered; it will be on your own risk.
7. If the terminal is out of service, please contact the engineers, do not repair the terminal by unauthorized engineers.
8. Make sure to use the original battery or the specified battery, or it may cause explosion. Do not disassemble, impact, squeeze, heat, short circuit or put into fire. Do not use the battery after it is soaked in water.

Password protection instruction

1. When entering the password, cover it with your body or hands to prevent it from being peeped.
2. The scope of the surveillance camera installed by the merchant shall avoid the location of the terminal as far as possible to prevent the cardholder's password disclosure.

Parking list

| Item No. | Name | Quantity |
|----------|---------------------------|----------|
| 1 | 5200 Android P05 Terminal | 1 pcs |
| 2 | USB cable | 1 pcs |
| 3 | User manual | 1 pcs |
| 4 | Printing Paper | 1 pcs |
| 5 | Power Adapter | 1 pcs |
| 6 | Battery | 1 pcs |

Sunyard Technology reserves the rights to change the specification of the terminal without prior notice.



HANGZHOU SUNYARD TECHNOLOGY CO.,LTD

Address: Sunyard Science & Technology Building, No. 3888,
Jiangnan Avenue, Binjiang District,
Hangzhou, China

Postcode: 310053

Telephone: 0086-571-56686126

Email: hzkj@sunyard.com

Website: <http://www.sydttech.com.cn>

To: Customer Service Center
Hangzhou Sunyard Technology Co., Ltd.
Sunyard Science & Technology Building, No.3888,
Jiangnan Avenue, Binjiang District,
Hangzhou, 310053

China



Customer Service Center

0086-571-56686126

Documents / Resources

| | |
|---|--|
|  | SUNYARD S200 Smart POS Terminal [pdf] Instruction Manual S200, S200 Smart POS Terminal, Smart POS Terminal, POS Terminal, Terminal |
|---|--|

References

- [User Manual](#)

[Manuals+](#), [Privacy Policy](#)

This website is an independent publication and is neither affiliated with nor endorsed by any of the trademark owners. The "Bluetooth®" word mark and logos are registered trademarks owned by Bluetooth SIG, Inc. The "Wi-Fi®" word mark and logos are registered trademarks owned by the Wi-Fi Alliance. Any use of these marks on this website does not imply any affiliation with or endorsement.