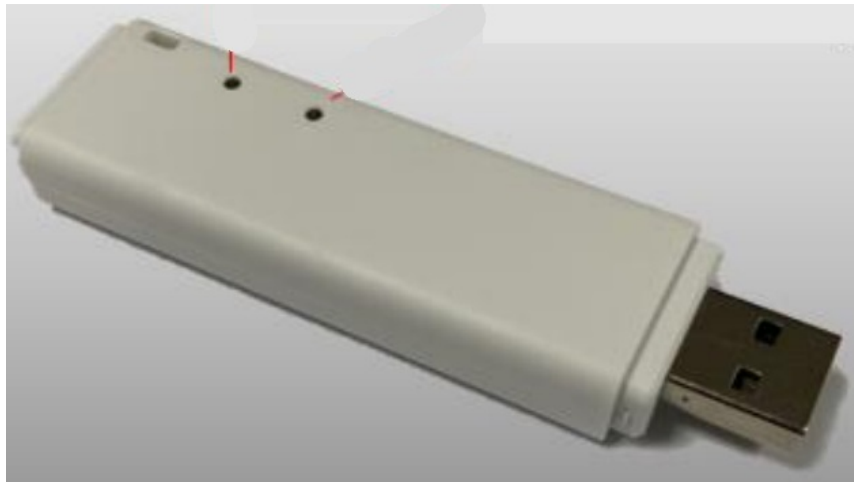




sunvote E100 Interactive Learning Solution User Manual

[Home](#) » [sunvote](#) » sunvote E100 Interactive Learning Solution User Manual 

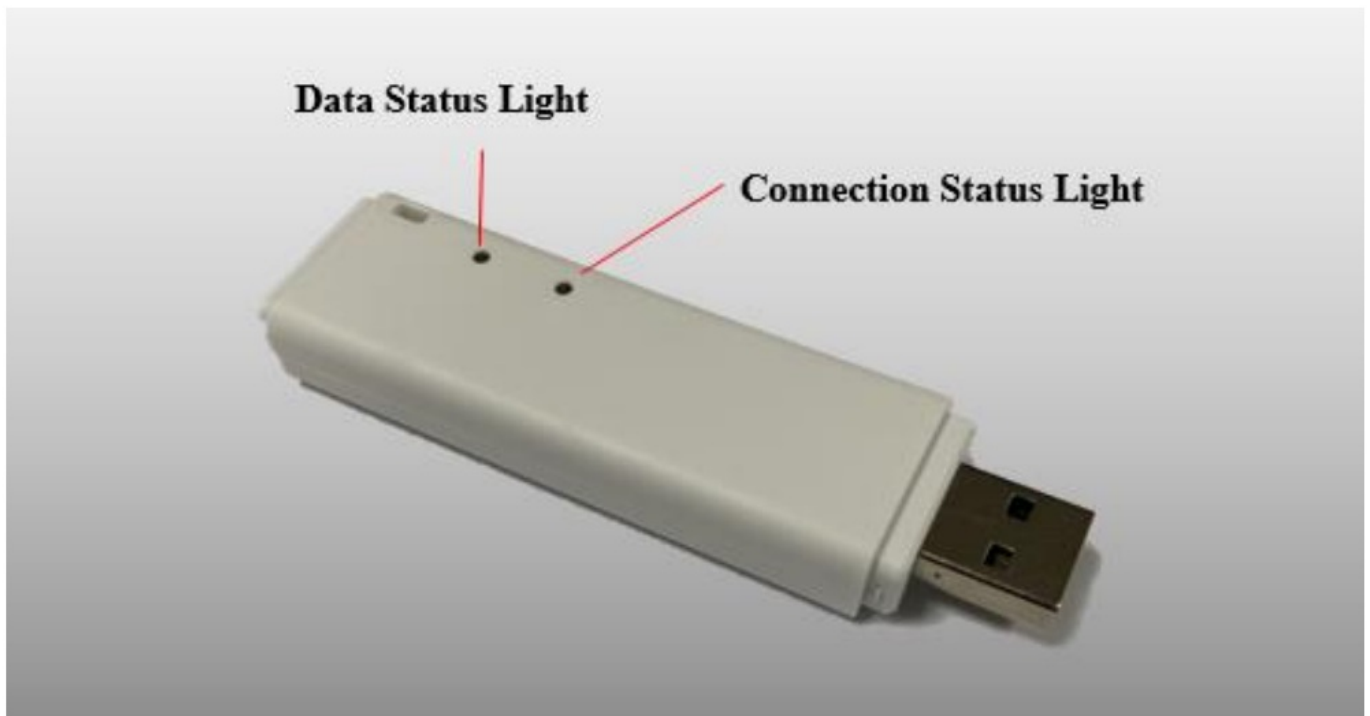
sunvote E100 Interactive Learning Solution



Contents

- [1 Product Description](#)
- [2 LED Indicator Light Status](#)
- [3 Connection type](#)
- [4 Management](#)
- [5 Warning](#)
- [6 Customer Service](#)
- [7 Documents / Resources](#)
 - [7.1 References](#)
- [8 Related Posts](#)

Product Description



LED Indicator Light Status

- Connection status light blinks slowly (once/s) in blue: connect with computer successfully
- Connection status light blinks quickly (many times/s) in blue: connect with software successfully.
- Data status light flashes: base station has received keypad's data successfully.
- Connection status light and data status light flash alternately: the base station enters the program upgrade state.

Connection type

Connect via USB port, plug and play under Windows. Accessory of 1.5M USB extending cable can be used.

Management

Base station ID

- Get & Set ID
 - Use Tool Kit to get base station ID.
 - Use Tool Kit to set base station ID. In the same system with multiple base stations, each base station should have a unique ID. In different systems with multiple base stations, the same ID would not interfere each other.
 - Base station ID will be saved until next modification.
- Get & Set channel
 - Use Tool kit to get and set base station ID and channel.
 - Once set, base station ID and channel will be saved until next modification.
 - When base station channel is changed, all the matched keypads will automatically change to its new channel, no need to change on keypads one by one.

Matching

Support 3 Matching modes: Match Mode (Quick Match Mode), Free Mode and Auto Mode.

- **Match mode**

How to use: Match the keypads to a certain base station before use. The pre-matched keypads will connect to that base station automatically after power on.

When to use: Multiple conferences in one place and need to avoid interference from each other.

Keypads can only communicate with the matched base station. It cannot communicate with other base station in other conferences.

- **Free mode**

How to use: When the base station is on and in free mode, input a channel number on keypad to make it connecting to that base station.

When to use: Multiple conferences in one place and need to avoid interference from each other.

Keypads are allowed to move around and it can select a specified base station to communicate with.

- **Auto mode**

How to use: Keypads connect with an auto mode base station automatically after turning on.

When to use: Mostly for rentals. Rental companies could distribute different sets to different places quickly without too many configurations. Usually only one conference in one place, as in auto mode, different systems will have interference to each other.

Note: When using the auto mode, ensure that no other base stations are used at the same time within the effective communication distance (100 meters), otherwise it may cause interference to other devices.

How to switch matching modes?

Open Tool Kit and connect the base station, select the mode you want. Once set, base station will save the mode until next modification.

Warning

This device complies with part 15 of the FCC Rules. Operation is subject to the following two conditions: (1) This device may not cause harmful interference, and (2) this device must accept any interference received, including interference that may cause undesired operation.

This equipment has been tested and found to comply with the limits for a Class B digital device, pursuant to part 15 of the FCC rules. These limits are designed to provide reasonable protection against harmful interference in a residential installation. This equipment generates, uses and can radiate radio frequency energy and, if not installed and used in accordance with the instructions, may cause harmful interference to radio communications. However, there is no guarantee that interference will not occur in a particular installation.

If this equipment does cause harmful interference to radio or television reception, which can be determined by turning the equipment off and on, the user is encouraged to try to correct the interference by one or more of the following measures:

- Reorient or relocate the receiving antenna.
- Increase the separation between the equipment and receiver.
- Connect the equipment into an outlet on a circuit different from that to which the receiver is connected.
- Consult the dealer or an experienced radio/TV technician for help.


Customer Service

Website: www.sunvote.com.cn


Tech-Support Tel: 0086 73185125432-8024

Version V1.0 Date: 2021-04-25

Documents / Resources

| | |
|---|--|
|  | sunvote E100 Interactive Learning Solution [pdf] User Manual SUNVOTEBASEE1, 2AMJJSUNVOTEBASEE1, E100 Interactive Learning Solution, E100, Interactive Learning Solution |
|---|--|

References

-  [Audience Response System,Interactive Voting Keypad,Student Clicker - SunVote](#)
-  [Audience Response System,Interactive Voting Keypad,Student Clicker - SunVote](#)