



**SUNTEC HB200
Wireless
Bluetooth
Remote Control**



SUNTEC HB200 Wireless Bluetooth Remote Control User Manual

[Home](#) » [SUNTEC](#) » SUNTEC HB200 Wireless Bluetooth Remote Control User Manual 

Contents

- [1 SUNTEC HB200 Wireless Bluetooth Remote Control](#)
- [2 Product Usage Instructions](#)
- [3 Usage](#)
- [4 Pairing Bluetooth devices](#)
- [5 Functionality](#)
- [6 Documents / Resources](#)
 - [6.1 References](#)
- [7 Related Posts](#)



SUNTEC HB200 Wireless Bluetooth Remote Control



Specifications

- Operation temperature: 20% to 80% non-condensing
- Storage temperature: 20% to 80% non-condensing
- Relative humidity: 700 to 1060 hPa
- Approvals: IEC 60601-1, IEC 60601-1-6, IEC 60601-1-2, ANSI/AAMI ES60601-1, CSA CAN/CSA-C22.2 NO. 60601-1, RED 2014/53/EU, FCC Part 15.249, IC RSS247, Telec MIC
- Compatibility: All OpenBus™ BLE control boxes
- Magnet key ordering no.: 0858008 (RAL 7035 light grey)
- Battery cover ordering no.: SA1031W9012

Product Usage Instructions

Pairing Bluetooth devices

1. Enter pairing mode.
2. Move the hand control closer to the control box you want to pair with.
3. Pair the hand control with the control box.

Entering Pairing Mode

When in pairing mode, the control box buzzer will beep, and the LED will blink. Place the magnet key over the Hall () and press down for 3 seconds to enter pairing mode.

Connecting to the control box

When the hand control LED blinks fast and the control box gives a high frequency sound at the same speed, press down key on the hand control to finalize pairing.

Programming of Memory Buttons:

Press Buttons 1+2 for 1 sec, release, then press 1 until 2 beeps are heard to set Memory 1. Repeat the procedure for Memory 2.

Functionality – Locking

To lock using the magnet, hold it over the marking () and press down key number. To unlock, use the magnet key

and press up key.

Recommendations

Follow the user manual for detailed instructions on usage and maintenance of the product.

FAQ

- **Q: Can I order extra battery covers for the HB200?**

A: Yes, it is possible to order extra battery covers for the HB200. The ordering number is SA1031W9012.

- **Q: How do I pair a SUNTEC control directly to a SUNTEC control box that supports BLE?**

A: To pair directly, enter pairing mode, move the hand control closer to the control box, and then follow the pairing steps as mentioned in the user manual.

Controls User Manual

SUNTEC ApS – Østergade 33 – 3200 Helsingør – Denmark www.suntec.dk

HB200

The HB200 Wireless is a Bluetooth® Low Energy (BLE) hand control for medical treatment chairs. LED light will function as pairing and battery indicator.



Usage

- Operation +5 °C to + 40 °C
- temperature: Storage -10 °C to + 50 °C
- temperature: Relative 20% to 80% non-condensing
- humidity: Operation +5 °C to + 40 °C
- temperature: Storage -10 °C to + 50 °C
- temperature: Relative 20% to 80% non-condensing
- humidity: Atmospheric 700 to 1060 hPa
- pressure: Approvals:
 - IEC 60601-1
 - IEC 60601-1-6
 - IEC 60601-1-2
 - ANSI/AAMI ES60601-1
 - CSA CAN/CSA-C22.2 NO.


- 60601-1 RED 2014/53/EU
- FCC Part 15.249
- IC RSS247
- Telec MIC.
- Compatibility: All OpenBus™ BLE control boxes

Magnet key

Magnet key – ordering no. 0858008 (RAL 7035 light grey)



Battery

The battery,  in the HB200 is a standard CR2032 coin cell battery.



Battery lifetime

With a usage of 140 sec/day, the HB200 will last approximately two years.



Changing the battery

To change the HB200 battery, open the battery cover on the back using a coin or a similar tool to turn the arrow counterclockwise from the locked state to the unlocked state.

- Low battery indication – When the battery power level falls below 20%, the LED will flash 4 times when a key is pressed.
- New battery indication – When the battery has been changed, the LED will be lit for 4 seconds after the first keypress.



Battery cover

It is possible to order extra battery covers. Battery cover ordering no. SA1031W9012

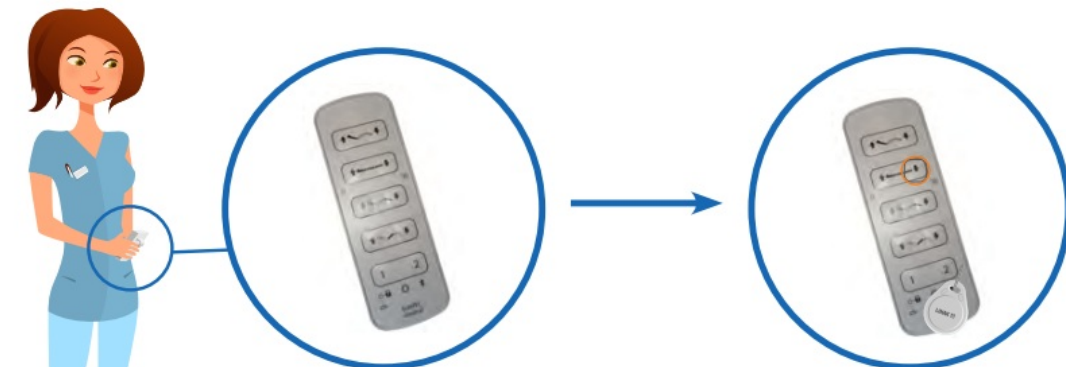


Pairing Bluetooth devices

Direct pairing. Direct pairing is used for pairing a SUNTEC control directly to a SUNTEC control box that supports BLE.

1. Enter pairing mode
2. Move the hand control closer to the control box you want to pair with
3. Pair the hand control with the control box

Entering Pairing Mode



Place the magnet key over the Hall (⊙) and press key down key for 3 seconds to enter the pairing mode

When in pairing mode, the control box buzzer will begin to beep, and the LED will begin to blink. The control unit LED will also begin to blink with the same frequency as the nearest control box.

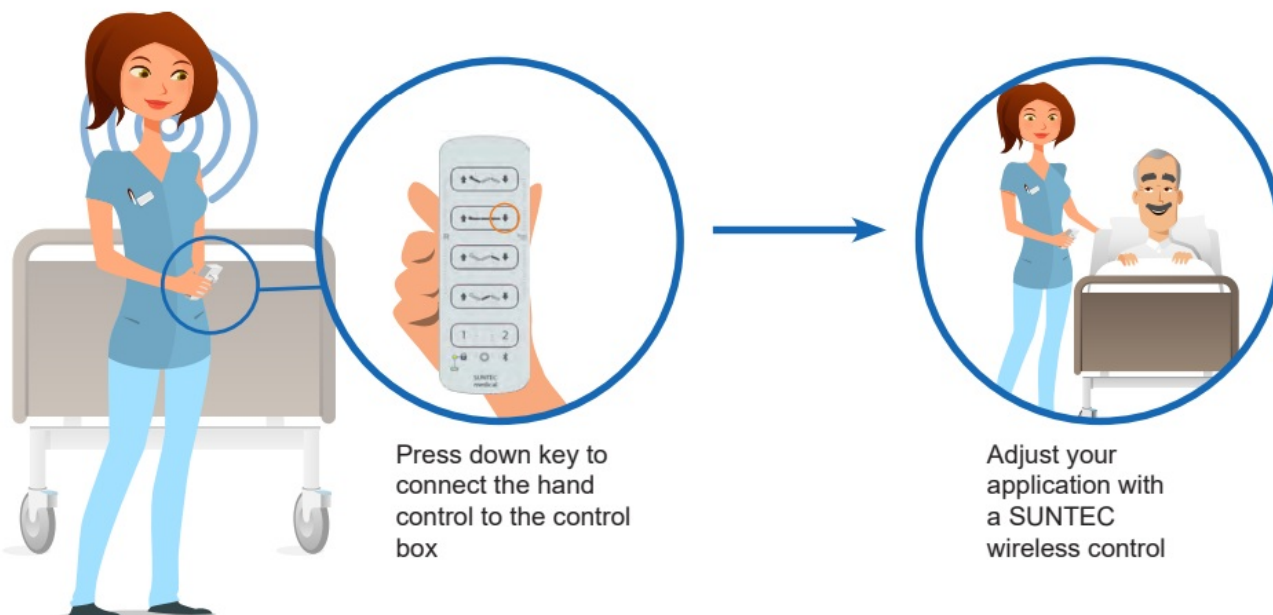




In pairing mode, the light/sound frequency will increase when the HB200 gets closer to a control box.

Connecting to the control box

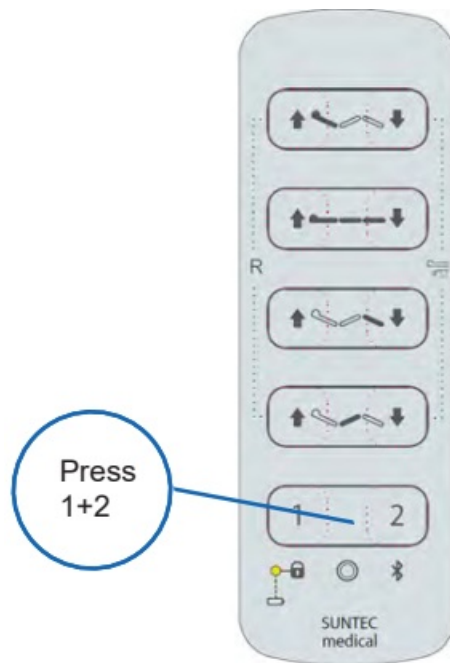
When the hand control LED is blinking fast and the control box gives a high frequency sound in the same speed, the devices are ready for pairing. To finalise the pairing, press down key on the hand control.



Programming of memory

Buttons 1+2 are pressed for 1 sec.


Then release and press 1 until 2 beeps are heard. Memory 1 is now set. Same procedure repeated for memory 2.

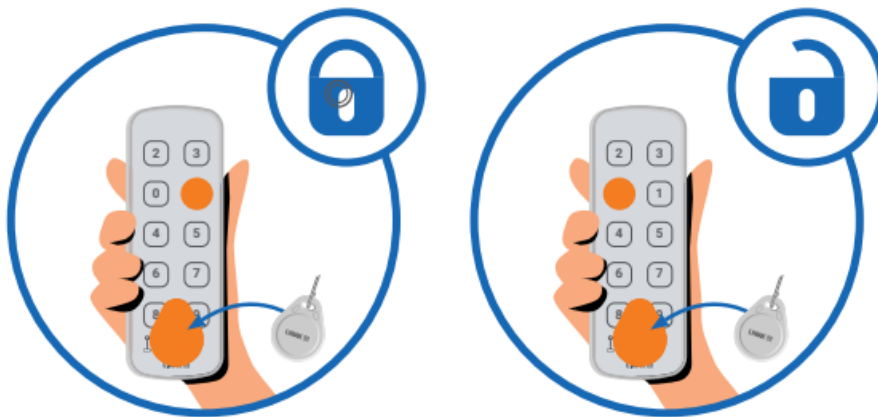


Functionality

Locking

Locking is possible with the magnet and pressing a key on the remote control.

To lock with magnet: hold the magnet key over the marking () and press down key number 1
 To unlock use the magnet key and press up key.

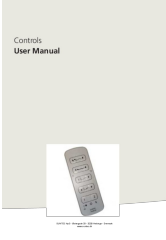


Recommendations

- Do not submerge the hand control in water.
- Unless otherwise specified or agreed with SUNTEC, the hand control is only intended to be used for SUNTEC/LINAK systems.
- It is recommended to check the hand control for damage and holes caused by violent handling before washing the application or at least once a year.
- Always perform the pairing of hand control and control box in close proximity to the application. Also ensure that the pairing has been made with the correct application by operating the application after ended pairing.
- When intending to operate an application with LINAK BLE, please ensure that the correct BLE hand control is used. Otherwise, there is a risk of unintended movement of the application that has been paired with the BLE hand control.

- When changing the battery, the battery cover must be lubricated with technical white Vaseline for easy mounting and to avoid fluids from entering the hand control.
- The string attachment hole must not be used as a magnet key placeholder. The HB200 locking mode can be activated by the magnet key both on the front and the back of the hand control resulting in unavailable drive functions.

Documents / Resources

	<p>SUNTEC HB200 Wireless Bluetooth Remote Control [pdf] User Manual HB200, HB200 Wireless Bluetooth Remote Control, Wireless Bluetooth Remote Control, Bluetooth Remote Control, Remote Control, Control</p>
---	---

References

- [Gør din klinik mere komfortabel: Skift din behandlingsstol ud](#)
- [User Manual](#)

Manuals+, Privacy Policy

This website is an independent publication and is neither affiliated with nor endorsed by any of the trademark owners. The "Bluetooth®" word mark and logos are registered trademarks owned by Bluetooth SIG, Inc. The "Wi-Fi®" word mark and logos are registered trademarks owned by the Wi-Fi Alliance. Any use of these marks on this website does not imply any affiliation with or endorsement.