

SUNSHARE
Balcony
PV
System



Sunshare Balcony PV System User Manual

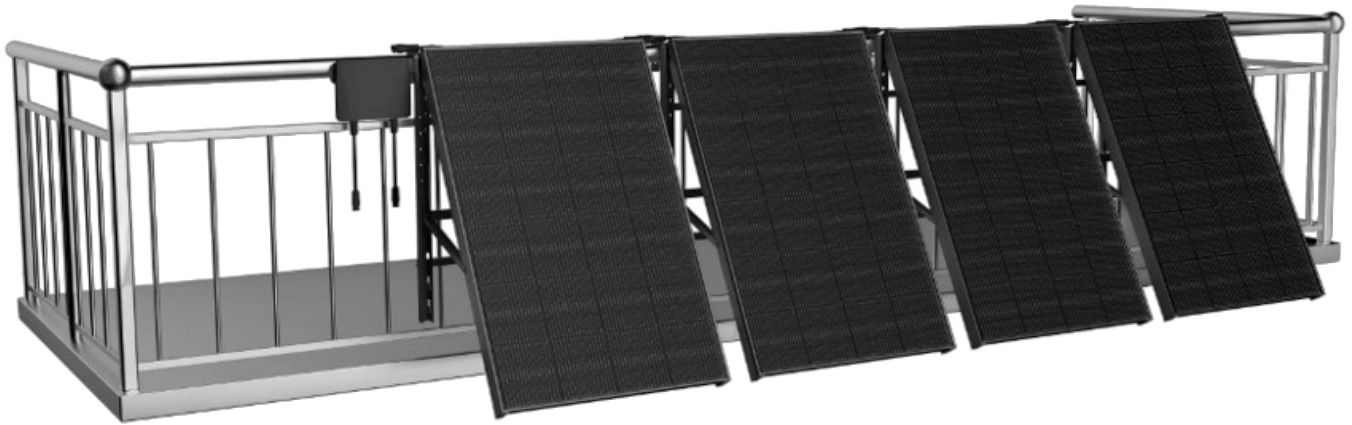
[Home](#) » [Sunshare](#) » Sunshare Balcony PV System User Manual 

Contents

- [1 Sunshare Balcony PV System](#)
- [2 Product Information](#)
- [3 FAQ](#)
- [4 Before it can go](#)
- [5 Safety Instructions](#)
- [6 Your Sunshare Set Includes](#)
- [7 Overview](#)
- [8 Dust removal panel](#)
- [9 Fixed Panel](#)
- [10 Connections](#)
- [11 App Instruction](#)
- [12 Documents / Resources](#)
 - [12.1 References](#)
- [13 Related Posts](#)

SUNSHARE

Sunshare Balcony PV System



Product Information

Specifications

- **Brand:** Sunshare
- **Model:** Solar Panel System
- **Manufacturer:** Sunsharetek
- **Website:** www.sunsharetek.com

FAQ

Frequently Asked Questions

- **Q:** Can the solar panels be bent during installation?
 - **A:** No, the panels must not be bent. Only touch the edges during installation.
- **Q:** Is an electrician required for connecting the Sunshare system?
 - **A:** No, the system can be easily connected to a standard plug without the need for an electrician.

Before it can go

Evaluate location

- Find the area with the most and longest lasting sunlight.
- Place as many panels as possible.
- Check if and where there is a socket.
- Look for possible mounting options for the attached
- Fixing bands (short, long), which fix the panels.
- If you are not sure if your balcony has the necessary conditions, check out our website www.sunsharetek.com for a short self-test (4 steps).

Hold a consultation

- You don't have to! You can install your system on your balcony or attach a terrace. As long as you don't change anything on the facade, it is usually no permission from the landlord or the owners' corporation is required.

- However, both owners' groups may have requirements for, for example, The visual protection is designed in color. Therefore, we recommend that the short Clarify.

Check power connection

- Your Sunshare system will be easily connected to a plug connected. This is a common plug, with which every
- It leads electricity from solar systems to each conventional socket. No electrician is required!

Safety Instructions

Please read this instruction carefully before starting the installation work. Damage caused by improper installation handling is not subject to any liability and warranty claims.

Keep installation instructions for later reference.

This manual describes the installation and operation of your Sunshare balcony PV system.

It supplies the same generated energy up to 800W to the terminal circuit of the connected household in a grid-connected manner.

The system is not designed for people (including children) with the use of the product is limited by physical, sensory or mental abilities or by lack of experience and/or knowledge, unless they are used by a person who is responsible for safety supervised the deceased received instructions from her on how to operate the device.

Children must be supervised to ensure they do not play with the device.

The components were designed with high quality and safety requirements produced. From the warranty and liability of Sunshare is excluded, however, personal and property damage which is due, for example, to one or more of the following causes:

- Non-compliance with this assembly instruction
- Improper installation, operation, maintenance and transportation
- Unauthorized repairs and transports
- unauthorized modifications to the system unit
- All damages resulting from the continued use of the system unit despite a visible deficiency
- Use of original spare parts and original accessories
- Misuse of the system unit

The safe and trouble-free operation of the device requires a proper transport, storage, installation, assembly and correct operation. Checks before installation of all components for possible transport or handling damage. If there are external damages, do not install the solar sight screen.

During the installation and operation of the solar sight screen, national regulations and connection conditions of the network operator must be observed. In particular, DIN VDE V 0100-551-1 (VDE V 0100-551-1), VDE AR-N 4105:2018-11, DIN VDE 0100-712, DIN VDE 0100-410 and DIN VDE V 0628-1 (VDE V 0628-1).

Safety instructions

Note that for the safe operation of the circuit, a fault current protection device (FI) must be installed with 30mA in accordance with DIN VDE 0100-410 (VDE 0100-410).

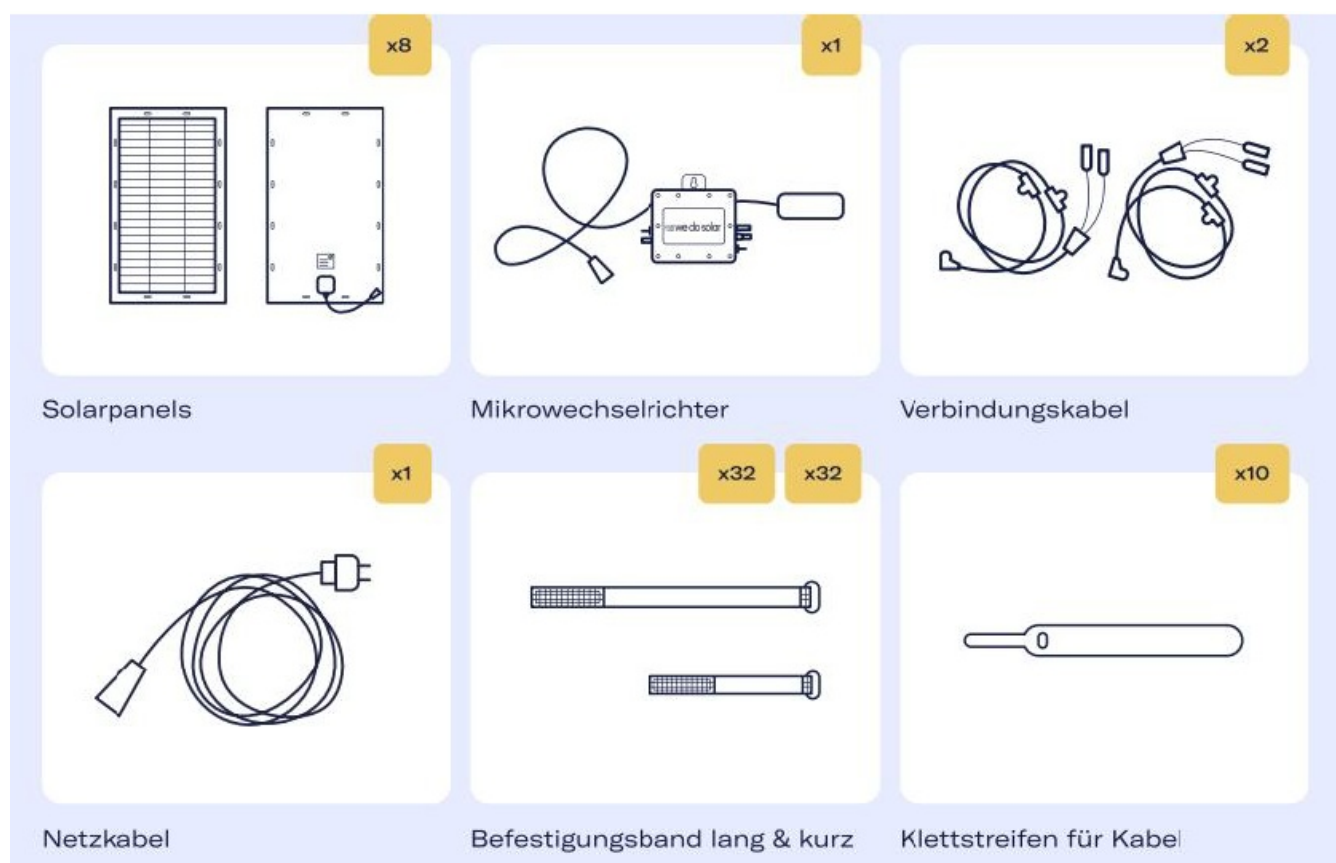
Note that the solar visibility protection is provided with sufficient sunlight DC Generate, which makes the solar screen live. Please do not disconnect the cable if the system is powered on, unplug the mains first. Touching the inverter under load should be avoided as the surface is hot and burns may occur.

Cables shall not be subjected to high tensile stress or permanent exposure to liquids. There shall be no open plugs during operation. In general, solar systems are considered to be very poor in maintenance. The solar visibility protection does not contain any movable parts to be serviced. The inverter housing must not be opened, and may cause electric shock or death if opened. If there is an abnormality or irregularity, unplug the power supply and do not continue to use the device. Do not carry out independent repairs or changes to the solar visibility protection or other parts of the system. Repairs and maintenance can only be carried out by qualified professionals. However, a visual inspection must be carried out at least once a year, and the solar visibility protection and inverters must be checked for defects.

Be careful that no personal injury can be caused by falling parts of the system. Sunshare assumes no liability for the professional installation of the system and its brackets, especially when installed in or above public sector. Do not install the solar visibility protection in strong wind or rain. Install the set Always second, one person holding the panel while the other person holding the panel install fasteners. Discard the panel only if the panel contains at least two. The system is fixed with straps.

At the end of the module's life, you can return it to us so that we can rework the panels and donate them to countries with energy shortages. Please contact our customer service for more details. Please refer to the data for determining the line reserve in the Annex.

Your Sunshare Set Includes



Please note

- The small Velcro strips are not suitable for attaching the panels.
- Please use this only for the connection of the cable strings, if necessary and desired.
- Never press the surfaces in front of or behind the solar cells with your fingers or other objects! When installing, only touch the edge.

The panels must not be bent!

Overview

Check the possibilities for the installation of individual components.

It should look like this later:

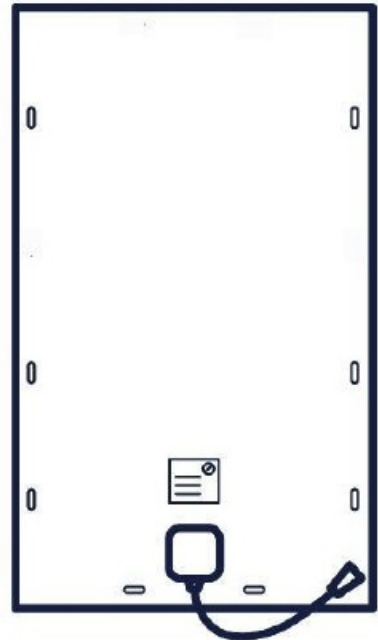
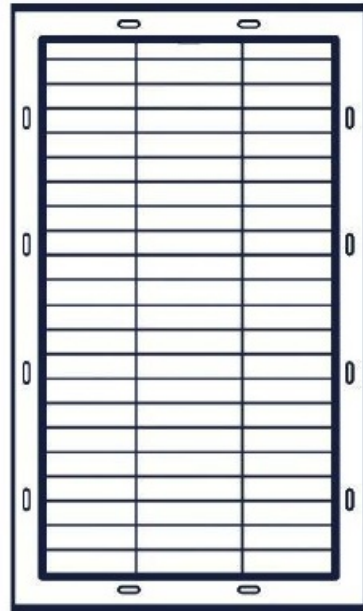


Please note:

- There are two possibilities to mount the solar panels. In the drawings it is indicated which mounting method suits your roof better, so that you can then start with the installation.

Dust removal panel

- Wipe the solar panels with a damp cloth.



- For environmental reasons, we do not have any additional plastic protective packaging, so the solar panels can become a little dusty during transportation.

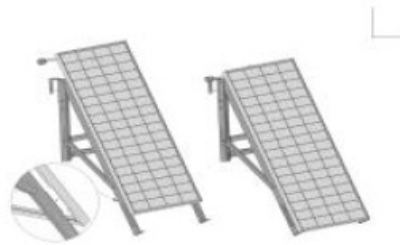
Fixed Panel

Fixing the panels with the mounting strips to the outside your balcony.



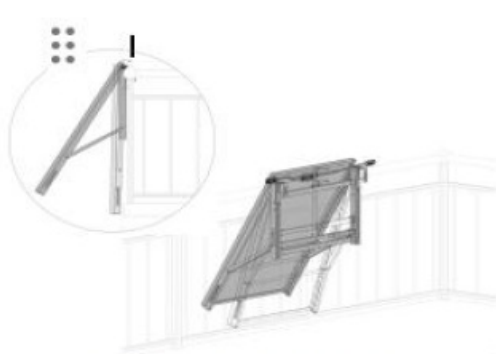
Step.1 Assembling bracket

You can simply unfold the two triangular units and connect them with two crossbars to complete the bracket assembly.



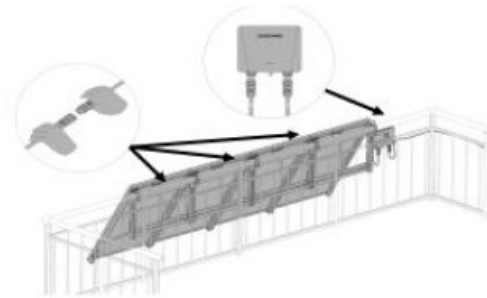
Step.2 Sliding solar panels

Slide the solar panel into the bracket frame to secure it.



Step.3 Mounting brackets

Mount the bracket for your balcony railings. The bracket's angle can be adjusted manually according to the sunlight to increase energy yield.



Step.4 Connecting terminals

Connect solar panels in parallel, and then connect the DC input terminal of solar panel to the inverter, ensuring that all connections are secure.



Step.5 Plug & play

Connect the AC output terminal of micro inverter with Schuko plug cable, and then connect the Schuko power plug to the power outlet.

Now you can turn on the power and start your "GREEN" travel!

The mounting bands are available in two sizes. Check for yourself which band is best suited for the mounting at which point.

Please note

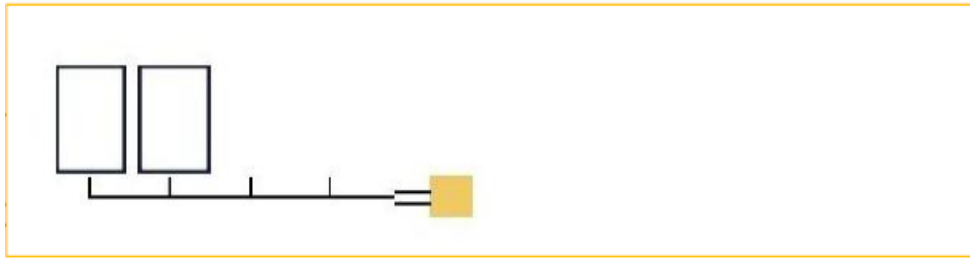
- Make sure someone else holds the solar panels for you while you install them.
- The solar panel can be released if 2 bands are mounted.
- For permanent use, at least 4 strips, each 2 on opposite sides of the panel, are installed on the balcony railing

Connections

Connect the panel to the connecting cable

- Connect each panel to one of the 2 connection cables.
- Use the connecting cable to connect the four left solar panels And the other connection cable for the four solar panels on the right.
- Should you Use less than eight panels, you can use right/left distribution Of course, you can choose freely. When plugging in, you should hear a click sound.

Please note



- Panels can be installed in any amount as you want. For example, if there are five panels, you can install them one time to produce more electricity.
- Cause we're using parallel connection of the solar panels, so you can choose install the micro-inverter at left or right side of the panels.
- The inverter is designed to combine two MPPTs into one, to make it more reliable and convenient for the system.
- You can choose the distribution of the panels on the right/left as long as you do not have a connection gap along a connection cable. The first two of the four connections on the connection cable or the last two are occupied.



Install micro-inverter and cable connection

- Install the micro inverter at the left or right side of the panels.

Note:

- Unused connections to the panels should be protected against moisture themselves. A fully closed set does not require additional protection.
- The microwave oven does not need special protection against weather influences or rebuilt. However, it is still recommended to install a protective cover.

Micro inverter with connect power cord

- When plugging in you should hear a click noise

Insert Power cord in socket

- Now you can use your solar power plant to connect to your grid. Connect and feed in solar energy. Done!



Please note

- The power supply through the power cord shall not be required either with an extension cable or with a multi-outlet.

App Instruction

Open and connect the Sunshare app

- Login to the Sunshare app with your mobile number to see if your solar power plant is working and what it produces.

- You can download the APP from Google Play



Google Play

or Apple Store



Documents / Resources

<div>Reparation</div> <div>Installation</div> <div>instructions</div> <div>Reparation</div> <div>Assembly</div>	<div>Sunshare Balcony PV System [pdf] User Manual</div> <div>Balcony PV System, Balcony, PV System, System</div>
--	--

References

- [User Manual](#)

[Manuals+](#), [Privacy Policy](#)

This website is an independent publication and is neither affiliated with nor endorsed by any of the trademark owners. The "Bluetooth®" word mark and logos are registered trademarks owned by Bluetooth SIG, Inc. The "Wi-Fi®" word mark and logos are registered trademarks owned by the Wi-Fi Alliance. Any use of these marks on this website does not imply any affiliation with or endorsement.