



SR-2833T2 RF
Single Color Wall
Mounted
Controller



Sunricher SR-2833T2 RF Single Color Wall Mounted Controller User Guide

[Home](#) » [SUNRICHER](#) » Sunricher SR-2833T2 RF Single Color Wall Mounted Controller User Guide 

Contents

- [1 Sunricher SR-2833T2 RF Single Color Wall Mounted Controller](#)
- [2 Function introduction](#)
- [3 Product Data](#)
- [4 Safety & Warnings](#)
- [5 Wiring diagram](#)
- [6 Pair with RF receiver](#)
- [7 Installation](#)
- [8 Documents / Resources](#)
 - [8.1 References](#)
- [9 Related Posts](#)

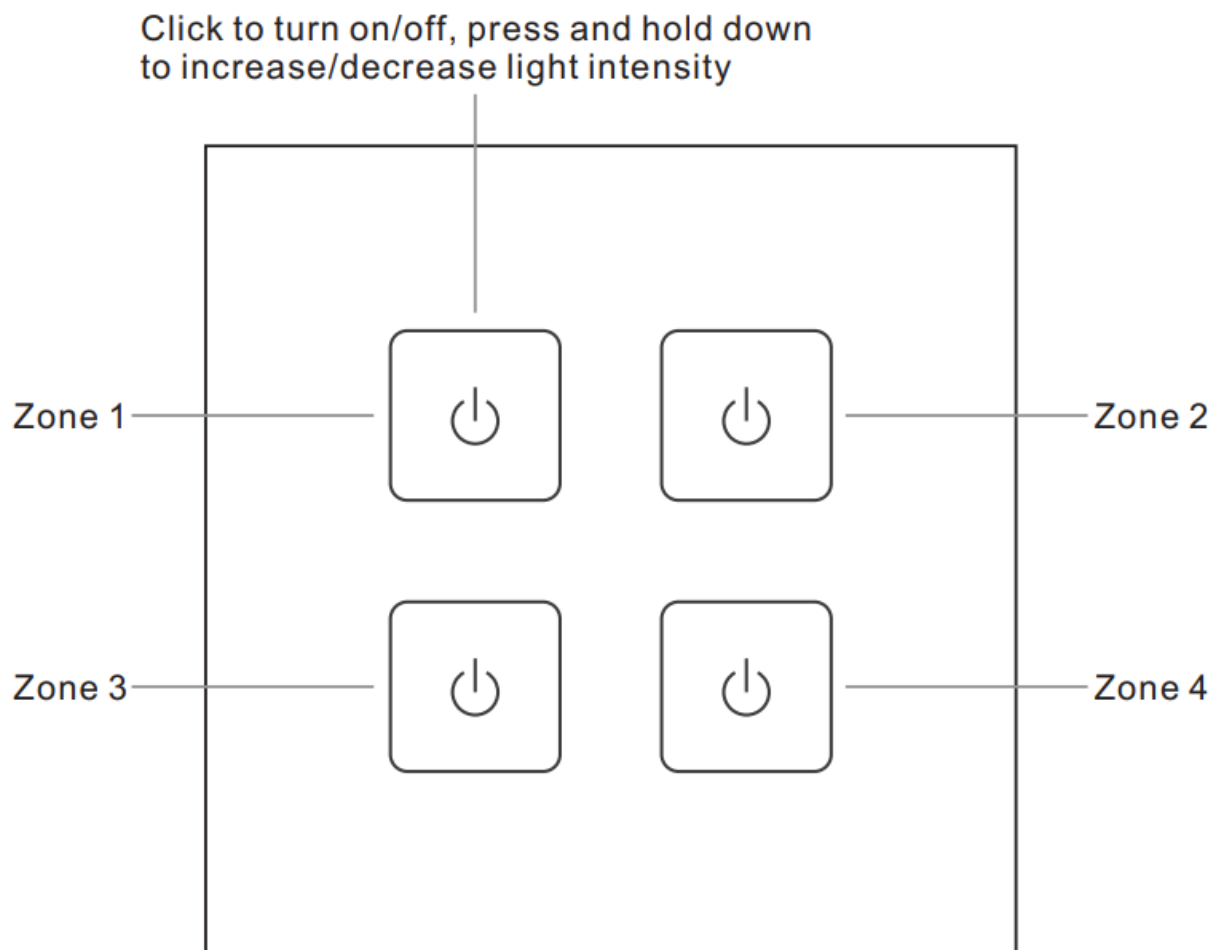


Sunricher SR-2833T2 RF Single Color Wall Mounted Controller

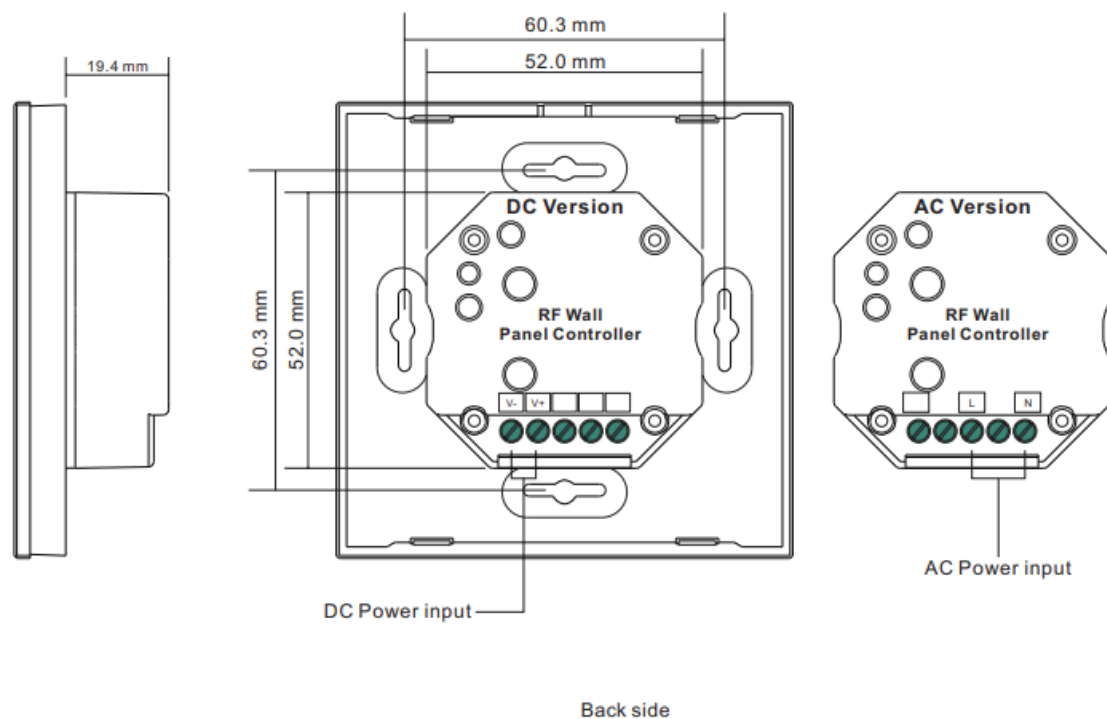


Important: Read All Instructions Prior to Installation

Function introduction



Front side



Back side

Product Data

Product Data

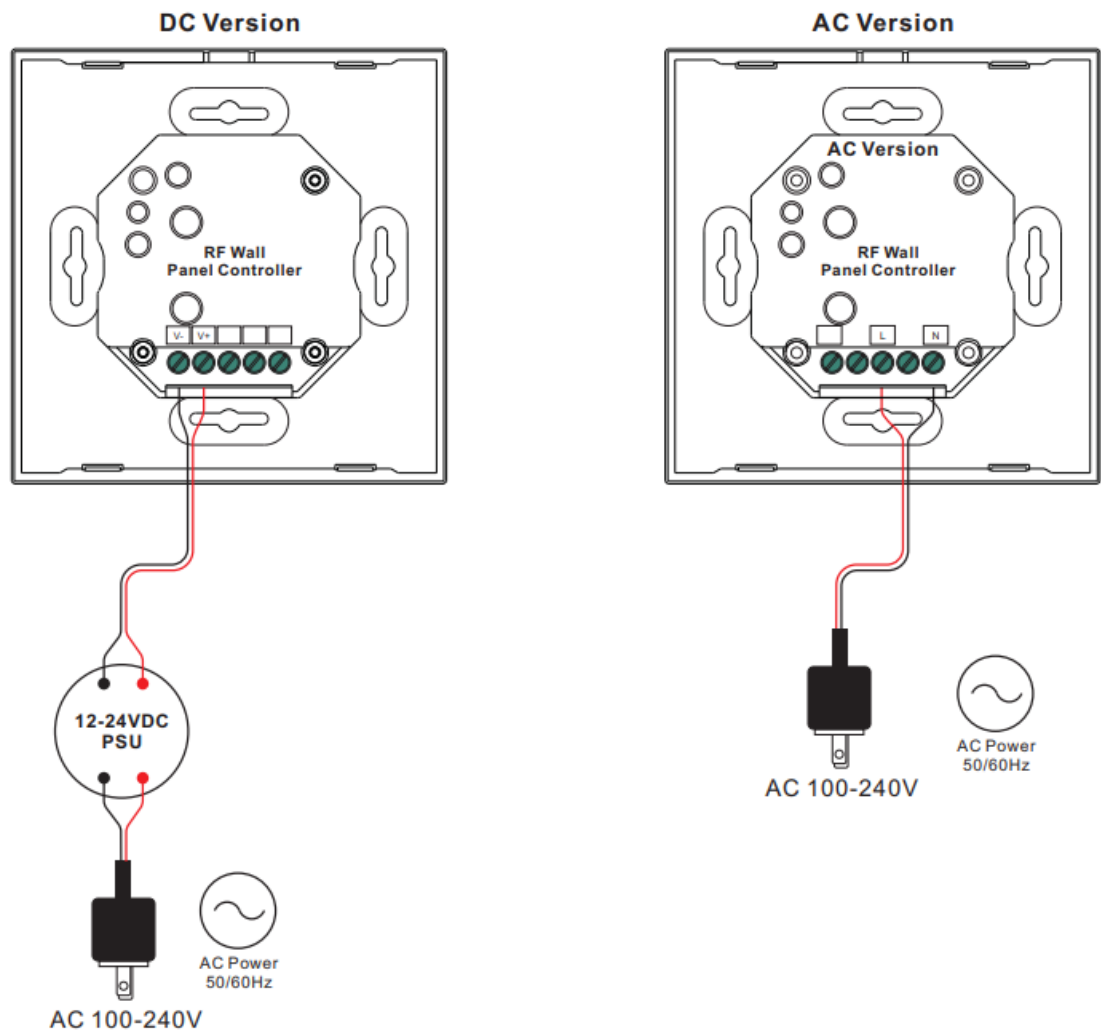
	DC Version	AC Version
Output Signal	RF signal	RF signal
Power Supply	12-24VDC	100-240VAC
Power consumption	200 mA	15 mA
Operating temperature	0-40°C	0-40°C
Relative humidity	8% to 80%	8% to 80%
Dimensions	86x86x29.1mm	86x86x29.1mm

- Touch-sensitive
- Glass interface(white & black)
- Compatible with all universal series RF receivers, radio frequency: 868/869.5/434MHz
- Control single color
- Control 4 zone of RF receiver synchronously and separately
- Backlighting for finding in the dark
- Waterproof grade: Ip20

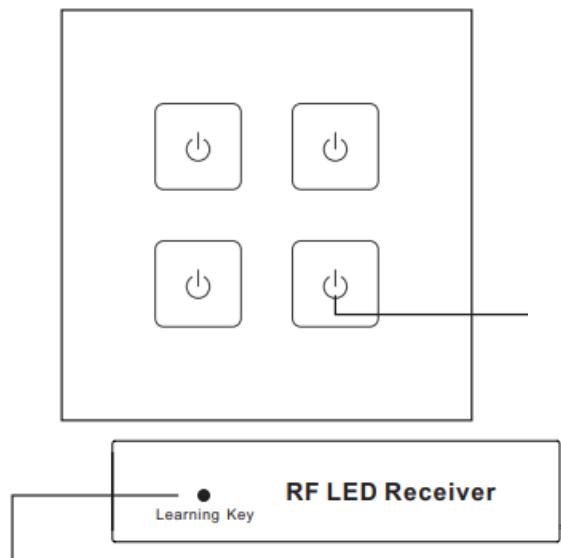
Safety & Warnings

- DO NOT install with power applied to device.
- DO NOT expose the device to moisture.

Wiring diagram




Pair with RF receiver

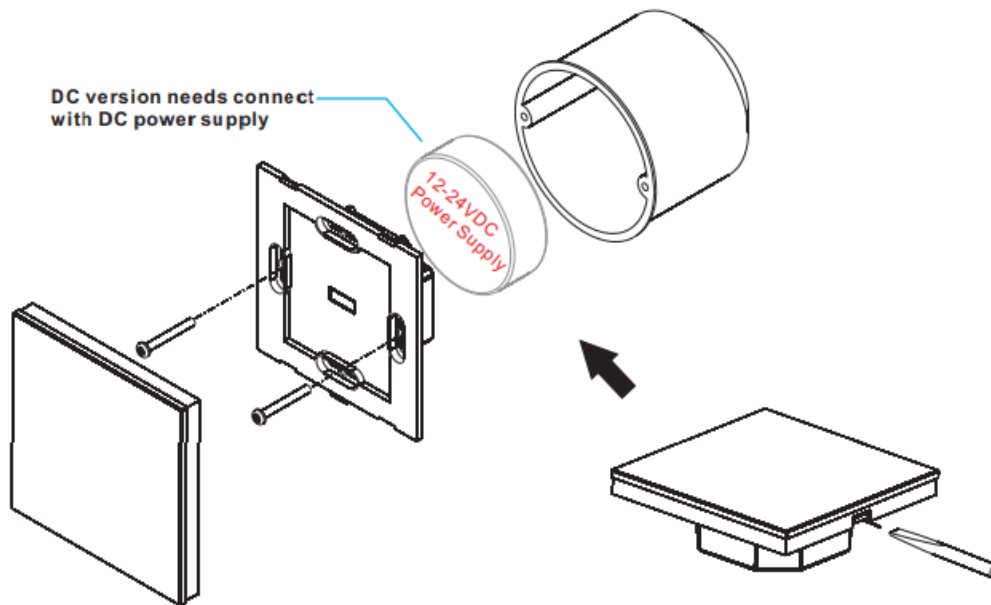


- Step 1: Do wiring the wall panel & RF receiver according to the wiring diagram (please refer to the instructions

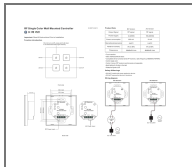
of RF receiver that you would like to pair with)

- Step 2: Click the “Learning Key” button on RF receiver or re-power on the receiver three times continuously to set it into pairing status.
- Step 3: Choose one zone and touch  the button of the zone (e.g. zone 4), LED lights connected with the RF receiver flicker once means the receiver is paired with zone 4 successfully.

Installation



Documents / Resources



[Sunricher SR-2833T2 RF Single Color Wall Mounted Controller](#) [pdf] User Guide
SR-2833T2, 09.283T2.04213, SR-2833T2 RF Single Color Wall Mounted Controller, SR-2833T2, RF Single Color Wall Mounted Controller, Color Wall Mounted Controller, Wall Mounted Controller, Controller

References

- [User Manual](#)

[Manuals+](#), [Privacy Policy](#)

This website is an independent publication and is neither affiliated with nor endorsed by any of the trademark owners. The "Bluetooth®" word mark and logos are registered trademarks owned by Bluetooth SIG, Inc. The "Wi-Fi®" word mark and logos are registered trademarks owned by the Wi-Fi Alliance. Any use of these marks on this website does not imply any affiliation with or endorsement.