



SUNRICHER 0-10V BLE Ceiling Mounted PIR Sensor Controller Owner's Manual

[Home](#) » [SUNRICHER](#) » SUNRICHER 0-10V BLE Ceiling Mounted PIR Sensor Controller Owner's Manual 

SUNRICHER

0-10V BLE Ceiling Mounted
PIR Sensor Controller



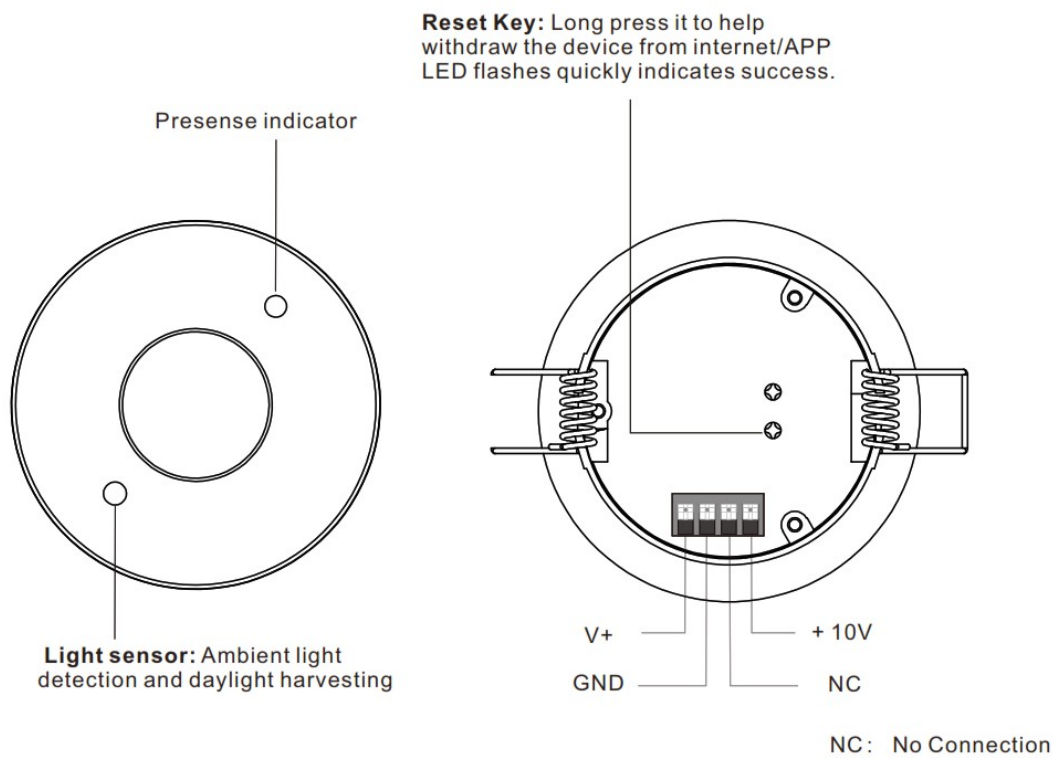
Product Datasheet

Please read all instructions before installation

Contents

- [1 Product info](#)
- [2 Parameters](#)
- [3 Features](#)
- [4 Dimension](#)
- [5 Application](#)
- [6 Specifications](#)
- [7 Detection Pattern](#)
- [8 Warning](#)
- [9 Operation](#)
- [10 Wiring](#)
- [11 Statement](#)
- [12 Documents / Resources](#)
 - [12.1 References](#)

Product info



Parameters

Input		Output, 0/1 -10V	Control		Environment		Others
Power	Signal	Current	Dimming Curve	Dimming Method	Operating temperature	Relative humidity	Size
12-24VDC	Bluetooth	Max. 20mA	Logarithmic	PWM	0°C~+45°C	8% to 80%	See dimensions

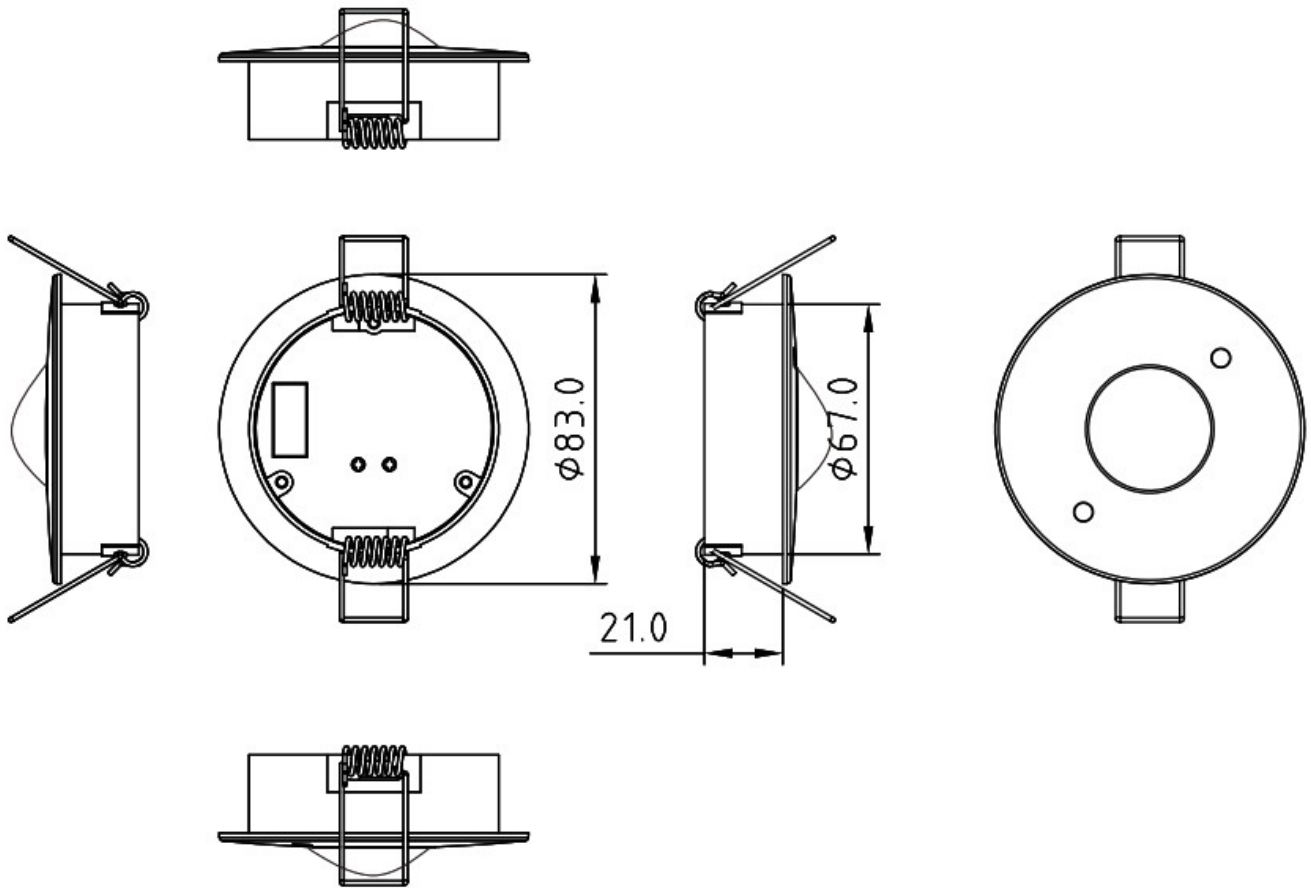
Features

- 0-10V BLE ceiling mounted sensor controller, Bluetooth® mesh network
- PIR sensing with daylight harvesting function
- Built-in 20mA 0-10V signal output
- Mesh network, which has a much longer control distance, transmits received signals to neighboring devices
- All devices on 0-10V line are broadcast controlled by mobile application
- Supporting our kinetic energy switches and EnOcean switches EWSSB and EWSDB
- In typical indoor environment, the range for wireless communication is 20m to 25m . Actual range is dependent

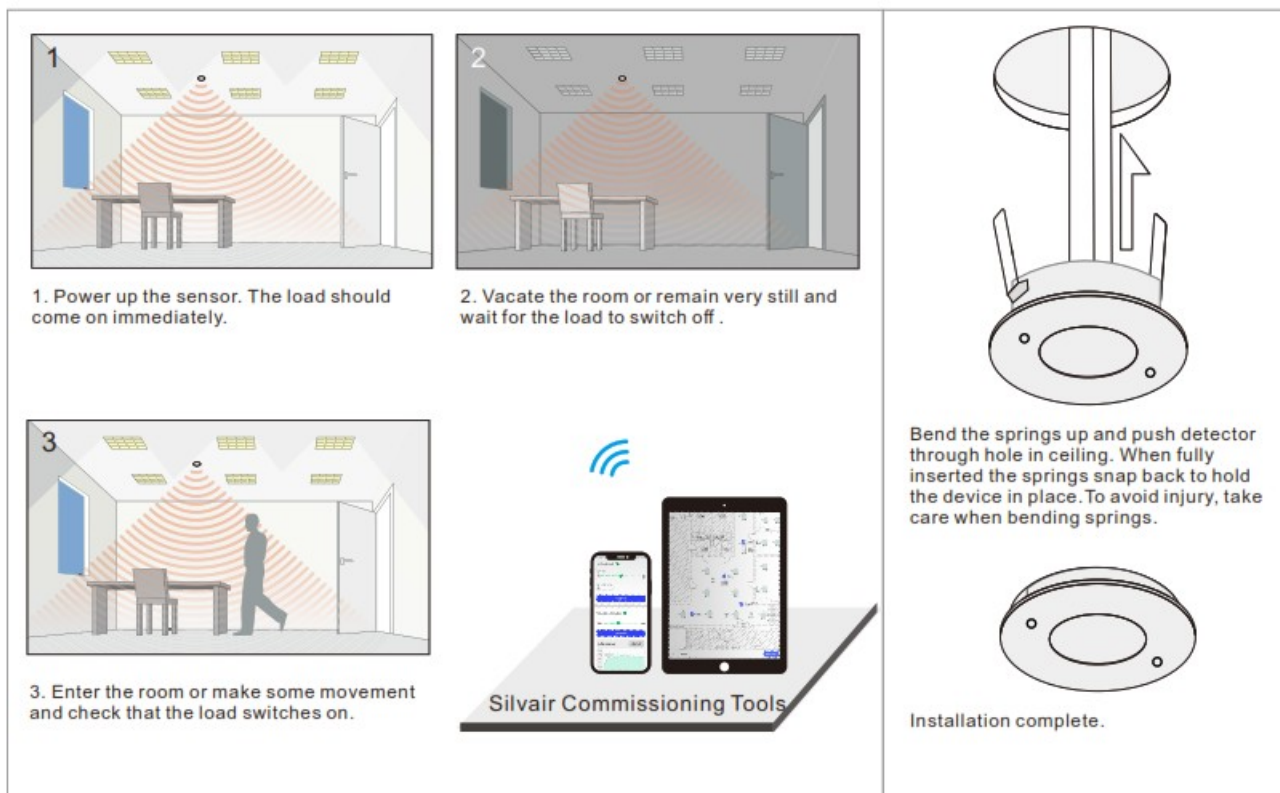
on field installation.

- On-board antenna
- Available with Magnetic reset (Touch the top part of sensor for 5 seconds)
- Waterproof grade: IP20
- 5 years warranty

Dimension



Application



Specifications

ENERGY SAVINGS

- Low/High-end trimming
- Daylight harvesting
- Occupancy/Vacancy detection
- Auto and advanced demand response programs
- Time-of-Day dimming schedule
- Energy monitoring

SENSING

- Testing height: 2.5m
- Detection area diameter: 8m @ 2.5m height

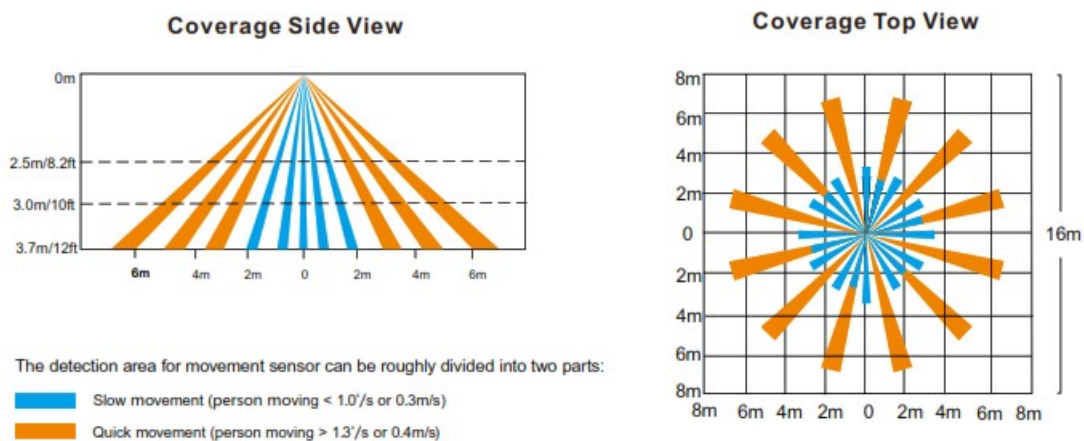
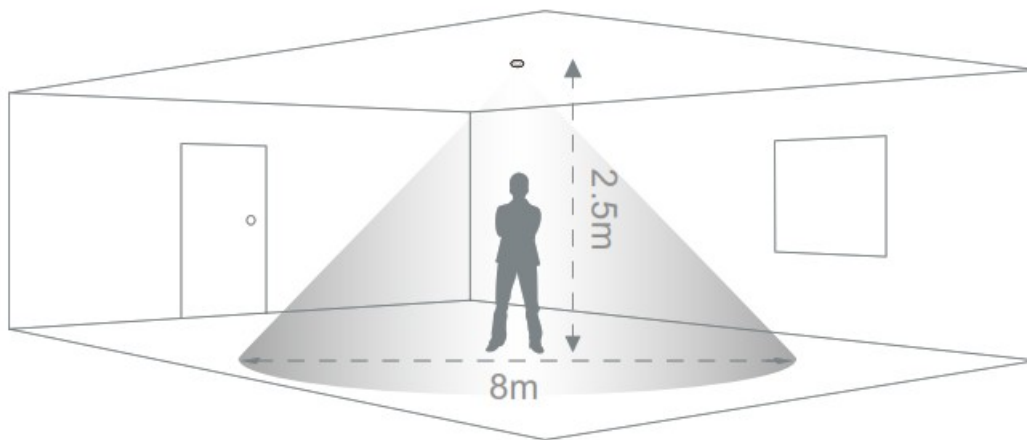
COMFORT & CONVENIENCE

- Advanced occupancy detections
- Light-level stability
- Configurable dim-and-linger occupancy
- Personalized setting profile
- Work with kinetic switch keypad and dimmer wallstation
- Multi-scenes control

ENVIRONMENT AND APPROBATION

- Operating temperature: 0°C to 45°C
- Agency approvals: UL Listed /FCC/ RoHS/ BQB...
- Warranty: 5 years

Detection Pattern



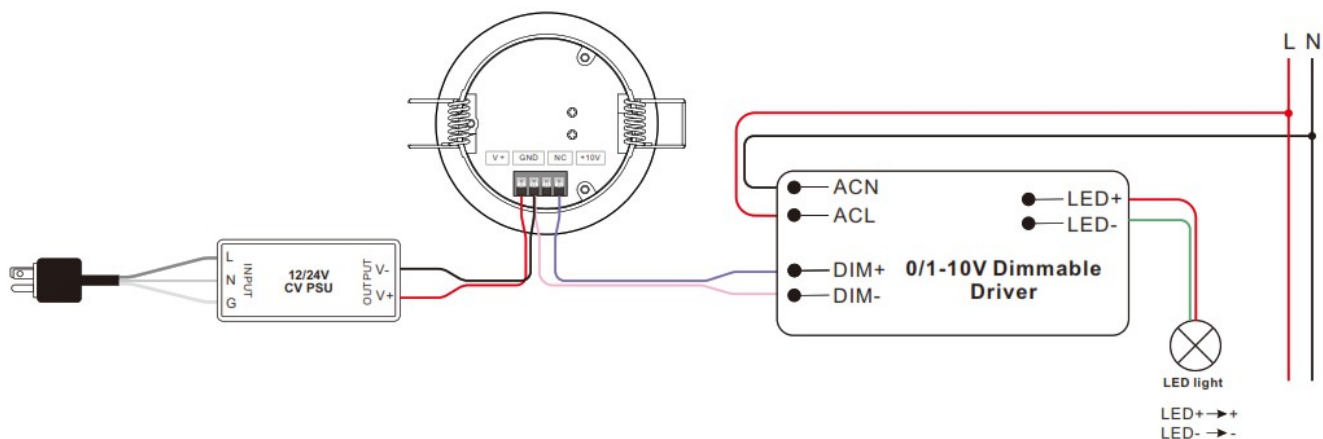
Warning

- DO NOT install with power applied to device
- DO NOT expose the device to moisture

Operation

- Do wiring according to connection diagram
- Kindly refer to for further pairing Silvair commissioning User Manual
- Press and hold down the “Reset” button on the controller over 5 seconds until the indicator flashes , which means it has been reset .
- Available with Magnetic reset (Touch the top part of sensor for 5 seconds)

Wiring



Statement

FCC STATEMENT

This equipment has been tested and found to comply with the limits for a Class B digital device, pursuant to Part 15 of the FCC Rules. These limits are designed to provide reasonable protection against harmful interference in a residential installation. This equipment generates uses and can radiate radio frequency energy and, if not installed and used in accordance with the instructions, may cause harmful interference to radio communications. However, there is no guarantee that interference will not occur in a particular installation. If this equipment does cause harmful interference to radio or television reception, which can be determined by turning the equipment off and on, the user is encouraged to try to correct the interference by one or more of the following measures:

- Reorient or relocate the receiving antenna.
- Increase the separation between the equipment and receiver.
- Connect the equipment into an outlet on a circuit different from that to which the receiver is connected.
- Consult the dealer or an experienced radio/TV technician for help.

This device complies with part 15 of the FCC Rules. Operation is subject to the following two conditions:

- (1) This device may not cause harmful interference, and
- (2) this device must accept any interference received, including interference that may cause undesired operation.

Changes or modifications not expressly approved by the party responsible for compliance could void the user's authority to operate the equipment.

IC STATEMENT

This device complies with Industry Canada's licence-exempt RSSs. Operation is subject to the following two conditions:

- (1) This device may not cause interference; and
- (2) This device must accept any interference, including interference that may cause undesired operation of the device.

Update log

Date	Version	Update content	Update by
2022-11-12	V1.5	FCC/IC Update	Romeo

Subject to change without notice. Please contact us if you have any question.


SILVAIR

Technology Partner

www.sunricher.com



Documents / Resources

	<p>SUNRICHER 0-10V BLE Ceiling Mounted PIR Sensor Controller [pdf] Owner's Manual SR-SV9030A-PIR-V-Ver1.5, SR-SV9030A-PIR-V Ver1.3, 0-10V BLE Ceiling Mounted PIR Sensor Controller, Ceiling Mounted PIR Sensor Controller, PIR Sensor Controller, Sensor Controller</p>
---	--

References

-  [Intelligent Dimmable LED Driver, Controller, Dimmer For Smart Home & Building](#)