



SUNPOW Jump Starter Instruction Manual

[Home](#) » [SUNPOW](#) » **SUNPOW Jump Starter Instruction Manual** 

Contents

- [1 SUNPOW Jump Starter Instruction Manual](#)
- [2 Warning](#)
- [3 Technical Specifications](#)
- [4 Product Description](#)
- [5 What's In The Box](#)
- [6 Understanding Charge LEDs](#)
- [7 Charging the SP-JS01](#)
- [8 Jump Starting 12V Vehicles](#)
- [9 Charging Your Smartphone/Pad](#)
 - [9.1 Switch between different modes of LED lights](#)
- [10 FAQ](#)
- [11 Trouble Shooting](#)
- [12 TOXIC AND HARMFUL SUBSTANCES](#)
- [13 Warranty](#)
- [14 Documents / Resources](#)
- [15 Related Posts](#)

SUNPOW Jump Starter Instruction Manual

Thank you for choosing the SUNPOW SP-JS01 16000mAh Lithium Jump Starter. Read and understand the User Guide before operating the product. Please keep the User Manual for future reference.

If you have any questions , please contact us . Email: **SUN POW .S ERVIC E@hotmail.com**

Warning

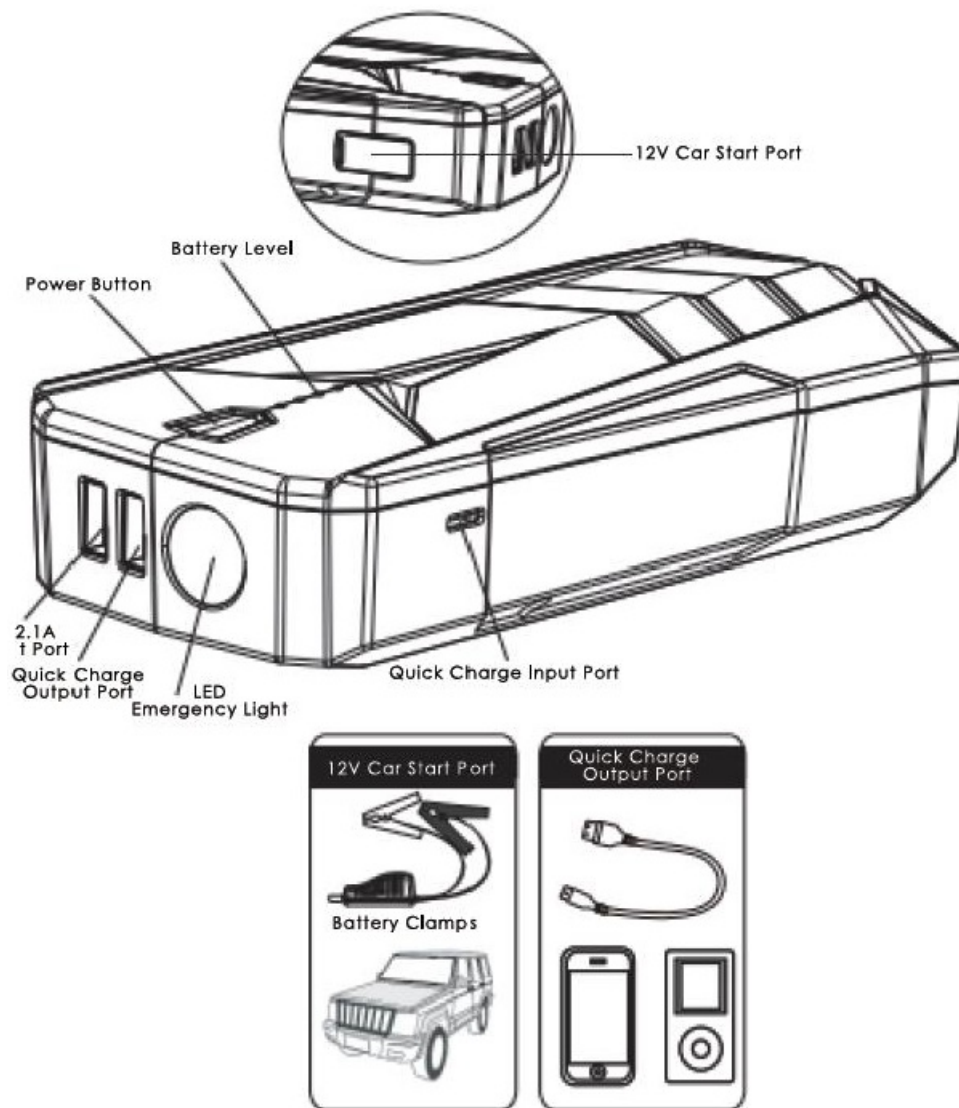
1. Read and understand the User Guide before operating the unit.
2. Do NOT replace vehicle batteries.
3. Do NOT use as a toy.
4. To reduce the risk of injury, close supervision is necessary when the unit is used near children.

5. Jump for 12V vehicles , it would be hazard if for other jumping.
6. Use of an attachment not recommended or sold by power pack manufacturer may result in a risk of fire, electric shock, or injury.
7. Do NOT connect the two clamps together.
8. 8.Before starting, ensure that there is no corrosion at the interface and no foreign matter adheres. Connect the main unit to the battery holder tightly to avoid the impact of the interface connection.
9. Once you have started your vehicle, please remove the product from the car battery within 30s, otherwise it may cause damage.
10. Do NOT Jump Start more than 3 times in a row that would damage the unit by overheating. When starting up multiple times, each start-up interval is two minutes.
11. Do NOT use Battery Clamps to charge other devices.
12. Do NOT place the product in an environment where the temperature may exceeds 60°C.
13. Charge only at ambient temperature between -20°C-60°C.
14. Do NOT expose the product to rain or place it in water.
15. Do NOT expose product to extreme heat or fire.
16. Do NOT operate the product in explosive atmospheres, such as in the presence of flammable liquids, gases or dust.
17. Make sure someone should be within range of your voice or close enough to come to your aid when working with batteries.
18. Before using the product, please remove personal metal items like rings, bracelets, necklaces, etc.
19. To reduce risk of damage to the electric plug and cord, pull the plug rather than the cord when disconnecting the power pack.
20. Do not use damaged or modified battery packs. Damaged or modified batteries may cause unpredictable behavior resulting in fire, explosion or risk of injury.
21. Charge only using the charger provided with this unit or the same standard with the host input port.
22. After jump start the car,don't charge this unit immediately.
23. Do NOT use the unit to jump start a vehicle while charging the internal battery.
24. The battery may leak in extreme situations. If a liquid is noticed coming from product do not handle with bare hands. In case of skin contact wash with soap and water immediately. If liquid comes in contact with eyes rinse eyes with cold running water for at least 10 minutes and get medical attention immediately.
25. Product contains lithium based battery, at end of product life dispose of product according to local regulation.

Technical Specifications

- Dimensions: 6.7 x 3.3x 1.6 Inches
- Weight: 1.1 Pounds
- Battery Capacity: 1 6000mAh
- Input: Quick Charge (5V=2A;9V=2A)
- Output: 5V, 2.1A; Quick Charge(5V=3A;9V=2A;12V=1.5A); Jump Starting 12V vehicles
- Charging Times: 3 Hours
- Starting Current Rating: 300A Peak
- Current Rating: 1500A
- Operating Temperature: -20°C – 60°C 4

Product Description



What's In The Box

- SP-JS01 Lithium Jump Starter
- USB Charger
- Battery Clamps
- Micro USB Cable
- Type-C Cable
- User Guide

Understanding Charge LEDs

Press the power button, the battery level will indicate as follows:

LED	4 LEDs off	1LED illuminates	2 LEDs illuminates	3 LEDs illuminates	4 LEDs illuminates
Battery Level	0%	25%	50%	75%	100%

During the charging process, the charge LEDs flashes cyclically. All LEDs are off that indicates the charging is suspended/end.

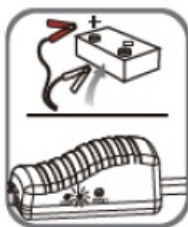
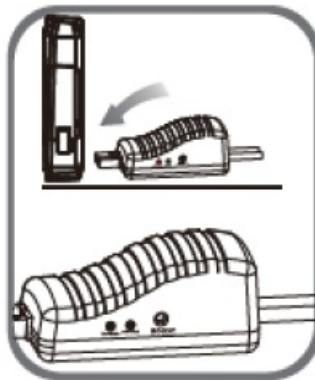
Charging the SP-JS01

1. Plug the USB charger into the socket.
2. Connect the SP-JS01 using the included USB Charge Cable to the USB IN port and the USB charger.



Jump Starting 12V Vehicles

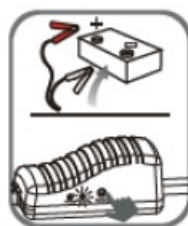
1. Verify the voltage and chemistry of the battery. Connect the Battery Clamp Connector to the Jump Starter.
2. Confirm the battery clamps are connected to the correct polarity battery terminals.
3. Please follow the instructions of the battery clamp indicator light to perform the corresponding operations.



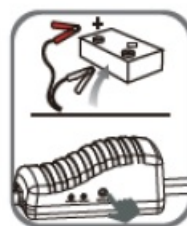
Green LED will illuminate, indicating that SP-JS01 is ready to jump start your vehicle.



If the battery clamps are connected in reverse, the Red LED will illuminate and beep. Reverse the connections to clear this error and then the Green LED will illuminate.



The green LED flashes that means the battery voltage is too low, please press the BOOST button, wait for the green LED illuminate, and complete the startup within 30 seconds.



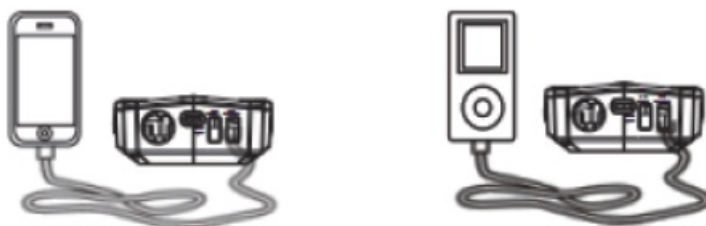
The red and green LED are off and no beep sound that indicates the battery may be completely damaged. Please make sure that the positive and negative poles are connected correctly and press the BOOST button, wait for the green LED illuminate, and complete the startup within 30 seconds.

4. Try starting the vehicle.

5. Once you have started your vehicle, disconnect the battery clamps.

Charging Your Smartphone/Pad

1. Connect the USB cable to Quick Charge Output Port.
2. Connect to electronic products such as smartphone/pad.
3. Press the power button to automatically identify the appropriate parameters of the electronic products, and start charging the electronic product.



Switch between different modes of LED lights

1. Long press the power button for 3 seconds to turn the flashlight "On". Press once for strobe, again for SOS.

FAQ

Q	A
How to turn off this appliance?	This appliance will power off automatically when no load or charging is complete.
How long it takes to full charge?	Approx. 3 hours through the Quick Charge input port.
How many times can this appliance charge the cell phone?	Depend on the battery capacity of your cell phone. For example, iPhone6 can be full charged 5 times.
How many times can this appliance jump start car?	Approx. 20 times.
What's the lifetime of SP-JS01?	Usually 3-5 years.
How long the storage of battery will remain?	6-12 months, however, we suggest to recharge it every 3 months.

Trouble Shooting

If the following solution cannot eliminate the trouble, please stop use it and contact us

Error	Cause	Solution
No response when pressing the power button.	Low voltage protection SP-JS01 is started.	Plug the adaptor into the Quick Charge input port to activate.


TOXIC AND HARMFUL SUBSTANCES

product name	Toxic and harmful substances or elements					
	Pb	Hg	Cd	Cr(VI)	PBB	PBDE
Lithium Jump Starter	○	○	○	○	○	○
○: Indicate all homogeneous materials' hazardous substances content are below the MCV limit specified in the Standard 2002/95/EC(RoHs).						

Warranty

Sunpow provides our customers 18 months warranty from the date of its original purchase. If the device fails due to manufacturer defects, please contact us email **SUNPOW.SERVICE@hotmail.com** to launch a warranty claim. We will instruct you on how to return the product for repair/replacement.

Documents / Resources

 <p>SUNPOW Thank you for choosing the Sunpow SP-JS01 1800mAh Lithium Jump Starter. Read and understand the user guide before operating the product. Please keep the user manual for future reference. If you have any questions, please contact us. Email: SUNPOW.SERVICE@hotmail.com</p>	<p>SUNPOW Jump Starter [pdf] Instruction Manual Jump Starter, SP-JS01</p>
---	---