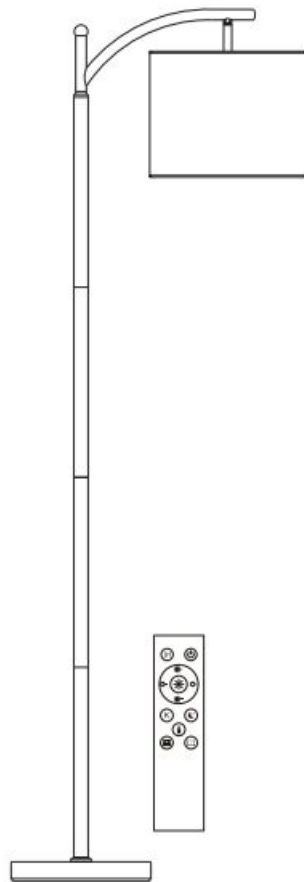




SUNMORY MF18166 Arc Floor Lamp with Remote Control User Manual

[Home](#) » [SUNMORY](#) » SUNMORY MF18166 Arc Floor Lamp with Remote Control User Manual 

*SUNMORY MF18166 Arc Floor Lamp with
Remote Control User Manual*



User Manual

Arc Floor Lamp

Contents

- [1 Introduction](#)
- [2 Product Features](#)
- [3 Parameter](#)
- [4 Cautions](#)
- [5 Package List](#)
- [6 Assembling](#)
- [7 Usage](#)
- [8 Matching](#)
 - [8.1 Matching process:](#)
 - [8.2 Decoding process:](#)
- [9 Warranty and Our mission](#)
- [10 Documents / Resources](#)
- [11 Related Posts](#)

Introduction

Thank you for purchasing our arc floor lamp. Please read the following instructions carefully before use.

Product Features

1. Arched floor lamp with solid colour finish mixed with a fabric shade combines the best of minimalist design with a modern colour palette to bring you a modern minimalist lamp perfect for any space in your home.
2. With the lampshade made of linen fabric, it is more ornamental during the day and has high light transmittance at night;
3. With a traditional foot switch, both children and adults can easily switch the lights;
4. The lamp is equipped with a remote control bulb, you can control the light switch, brightness and colour temperature through the remote control conveniently;
5. Our remote control has the code matching function, which allows you to control several lights with one remote control in different scenes;

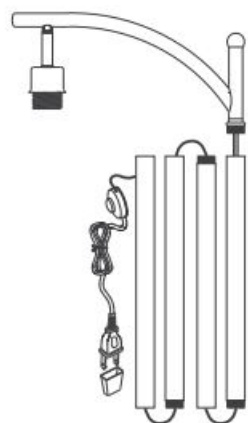
Parameter

Lamp	
Model	MF18166
Power For Blub	MAX 60W
Material	Iron+ Fanric
Socket Type	E26
Switch	Foot switch + Remote control
Size For Shade	11 x 11 x 9 inches
Size For Lamp	9.84 x 9.84 x 61.41 inches
Bulb	
Voltage	100-120V
Power	9W
Brightness	800lm, 10%-100%
CCT	3000K-6000K
Life	30000h

Cautions

1. If the remote control can't control the lamp, please try to match the codes. If you still can't control the lamp after the code is matched, please contact us as soon as possible;
2. Please make sure that the voltage is 100-120V, which is standard for US. This product can only be used between 100-120V.
3. Unplug before cleaning.

Package List



A. Lamp x 1



B. Base x 1



C. Nut x 1



D. Lampshade x 1



E. Top Bracket x 1

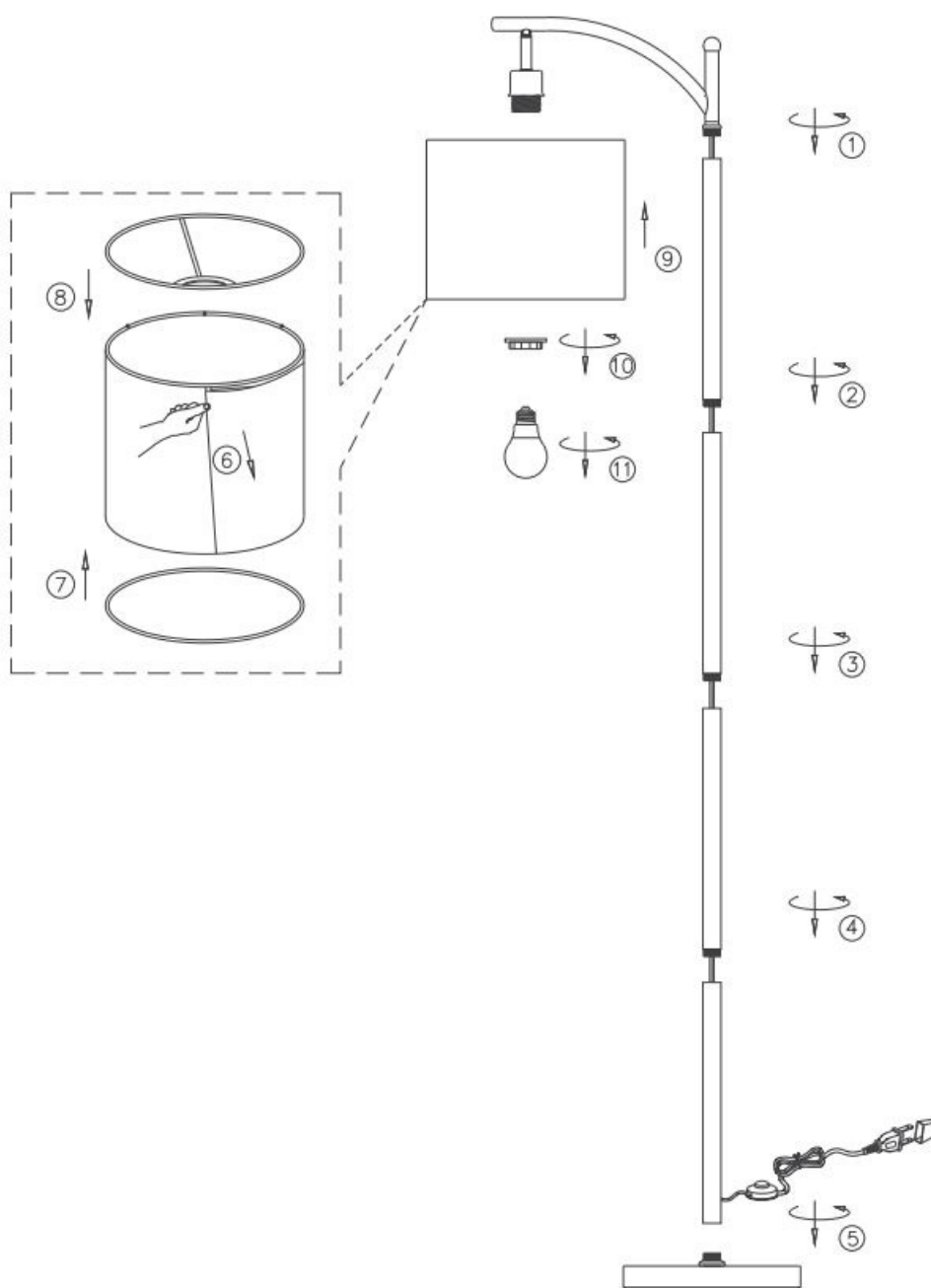


F. Bottom Bracket x 1



G. Bulb x 1

Assembling



- (1) CD Connect the straight tube and the lamp holder tube.
- (2)-(4) Connect the straight tube to another straight tube.
- (5) Connect the straight tube to the base.
- (6) Put the Velcro at both ends of the lampshade together.
- (7)-(8) Clip the bracket to the lampshade.
- (9) Install the assembled lampshade to the lamp holder.
- (10) Lock the lampshade on the lamp holder with the lamp nut.
- (11) Install the bulb to finish the assembling.

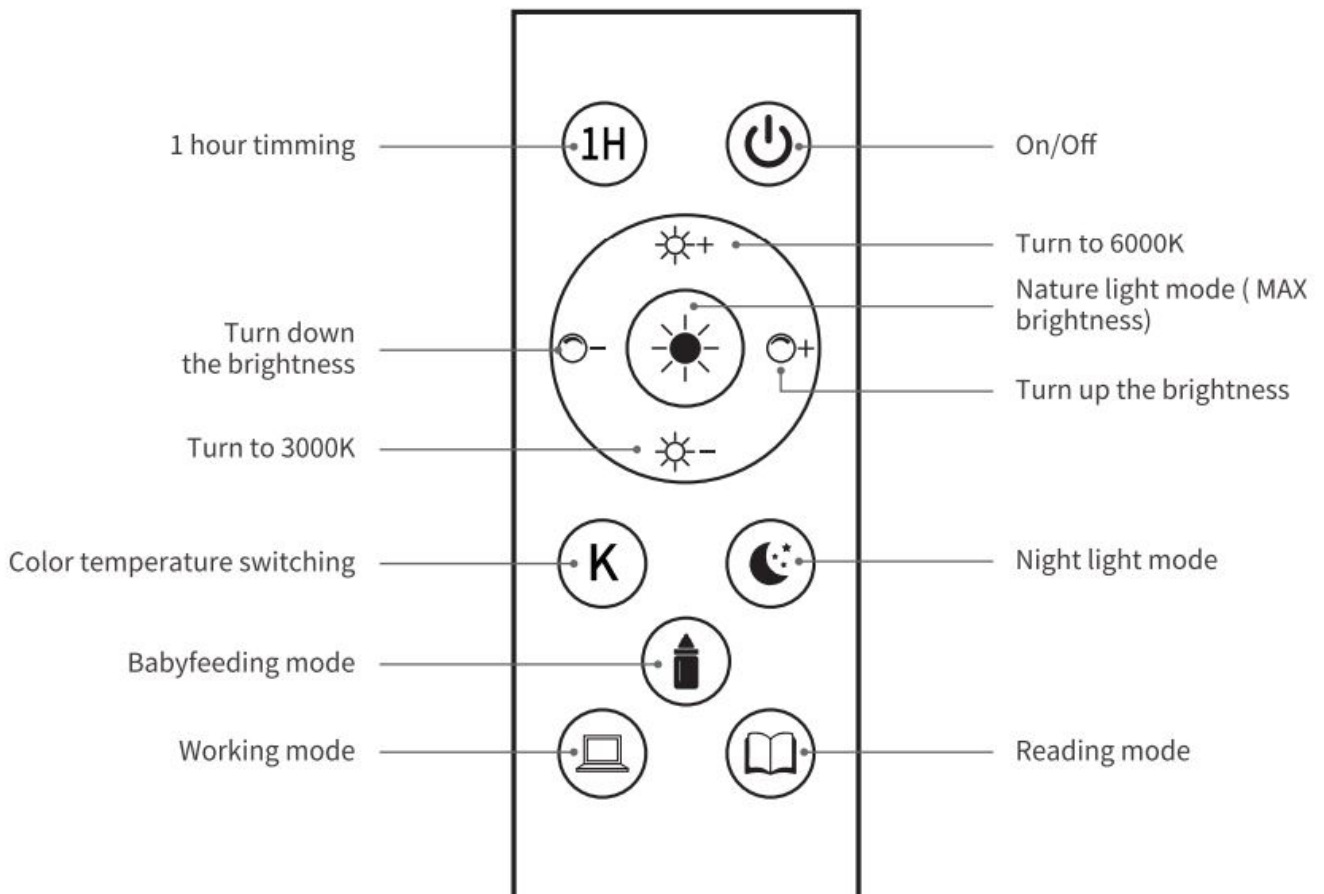
Usage

On/Off: G)Step on the foot switch.

@Press switch button on the remote control .

CCT: Press the colour temperature+/- button, short press is for grading dimming, long press is for steeples dimming.

Brightness: Press the brightness+/- button, short press is for grading dimming, long press is for steeples dimming.



Matching

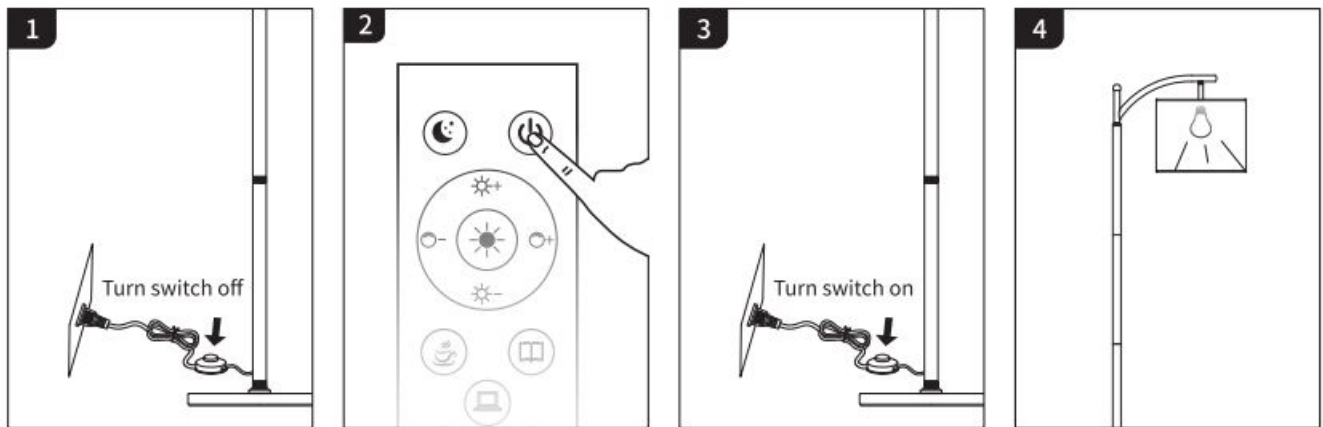
Make sure the remote control matches well with the lamp:

Plug the adapter to the power supply and use the remote to control the lamp. Usually the remote controls the lamp perfectly.

If the remote control doesn't work for the lamp, please re-match them.

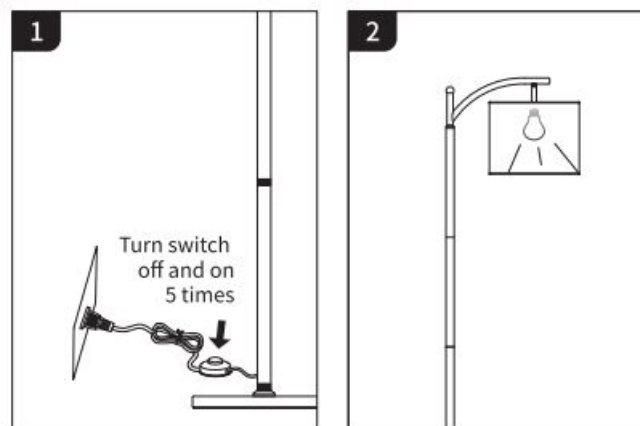
Matching process:

1. Disconnect the power supply.
2. Press the power button on the remote and hold on.
3. Connect the power supply.
4. When the light flashes, it matches successfully.



Decoding process:

Connect and disconnect the power supply 5 times. When the main light flashes, it means decode successfully



Warranty and Our mission

Light the world, Warm your heart, which is the goal that we have been pursuing. We'd like to provide the best lamps and service to you. We provide a 36-month warranty for you. If you have any questions or suggestions, please contact us (E-mail: us@sunmory.com) soon, we would do our best to solve the problem and improve ourselves. Wish you enjoy the lamp and our service.



Video Installation tutorial
<http://service.sunmory.com>

<http://service.sunmory.com>

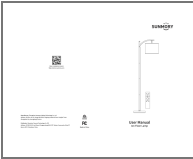
Manufacturer: Zhongshan Yamaxun Lighting Technology Co., Ltd

Address: 5th floor, No.10, Yongyi 6th Road, Yongxing Industrial Zone, Henglan Town, Zhongshan City, Guangdong Province

Distributor: Shenzhen Yioumai Technology Co.,LTD Address: 2/F,BLDG.9,Fu'an Phase II Gongyecheng NUM. EXT. Xintian Community, Fuhai ST. Bao'an DIST., Shenzhen, China



Documents / Resources

	SUNMORY MF18166 Arc Floor Lamp with Remote Control [pdf] User Manual MF18166, Arc Floor Lamp with Remote Control
---	---