



Contents [[hide](#)]

- [1 Sunmi V2S plus T5F0A Portable Data Processing Terminal](#)
- [2 Product Usage Instructions](#)
- [3 Quick Start](#)
- [4 Printing Instructions](#)
- [5 Table for Names and Content Identification](#)
- [6 Significant Safety Instructions](#)
- [7 Suggestions](#)
- [8 Statements](#)
- [9 Disclaimer](#)
- [10 EU regulatory conformance](#)
- [11 RESTRICTIONS OF USE](#)
- [12 Specifications](#)
- [13 Fcc Statements](#)
- [14 Product Warranty Card](#)
- [15 Frequently Asked Questions](#)
- [16 Documents / Resources](#)
 - [16.1 References](#)



Sunmi V2S plus T5F0A Portable Data Processing Terminal



Product Specifications

- **Compliance:** ISED Canada, FCC
- **Warnings:** Consult dealer or technician for assistance
- **Caution:** Unauthorised modifications may void the user's authority to operate the equipment

Product Usage Instructions

Compliance Statements

- The product complies with ISED Canada and FCC regulations for operation.

Consultation

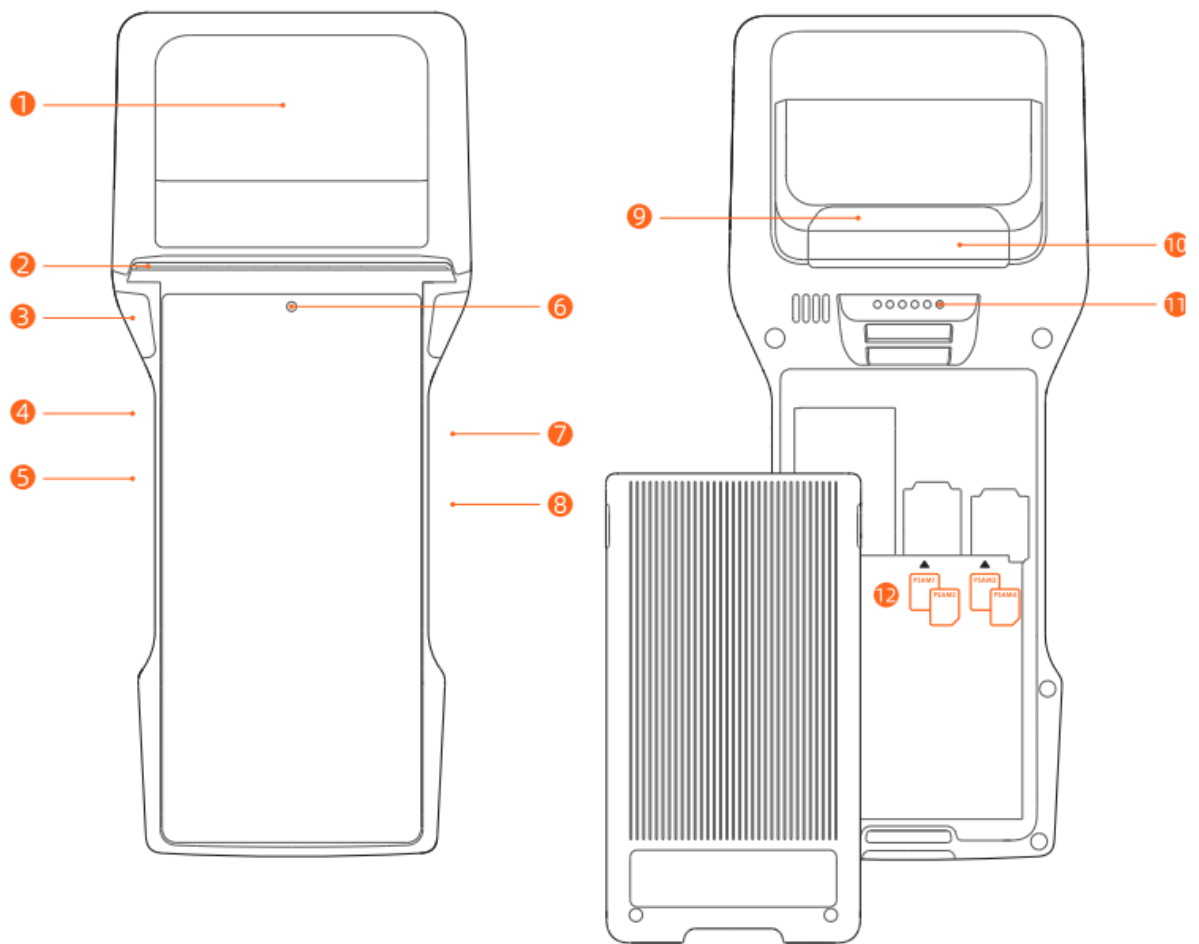
- If you encounter any issues with the product, it is recommended to consult the dealer or an experienced radio/TV technician for assistance.

Caution on Modifications

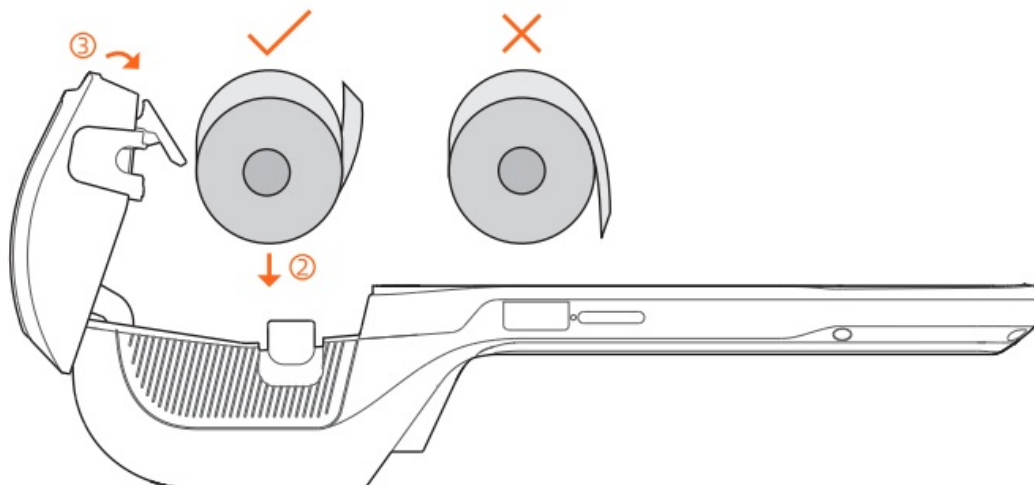
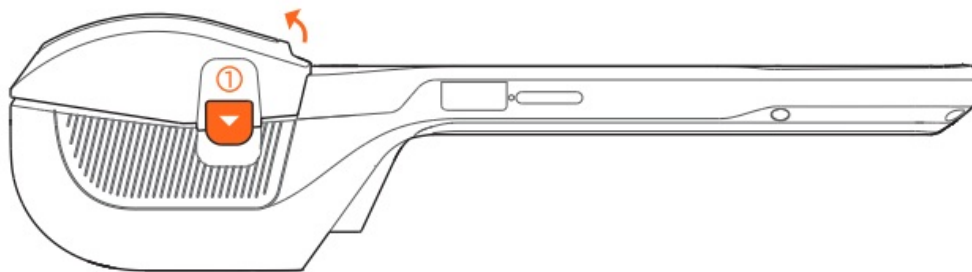
- Users are advised that making changes or modifications to the equipment without express approval may result in the voiding of the user's authority to operate the product.

Quick Start

1. **NFC Reader (optional)**
 - For reading NFC cards, like loyalty cards.
2. **Printer**
 - For printing receipts when the device is on.
3. **Scan Button/LED (optional)**
 - Short button to enable the barcode scanning function.
4. **Type-C**
 - For device charging and developer debugging.
5. **Micro SD Card Slot/Nano SIM Card Slot**
 - For installing the Micro SD card and Nano SIM card.
6. **Front Camera (optional)**
 - For video conference, or photo/video taking.
7. **Power Button**
 - **Short press:** wake up the screen, lock the screen.
 - **Long press:** long-press for 2-3 seconds to turn on the device when it is off. Long-press for 2-3 seconds to select to power off or reboot the device when it is on. Long-press for 11 seconds to reboot a device when the system is frozen.
8. **Volume Button**
 - For volume adjustment.
9. **Scanner (optional)**
 - For barcode data collection.
10. **Rear Camera**
 - For photo taking and quick 1D/2D barcode reading.
11. **Pogo pin**
 - For connecting a barcode scanning accessory or a cradle for communication and charging.
12. **PSAM Card Slots (optional)**
 - For installing the PSAM cards.



Printing Instructions



- This device can load an 80mm thermal receipt or label paper roll, and a black label is also optional.
- The paper roll spec is 79÷0.5mmx050mm.
- Please press to open the printer (see 1). Please do not force open the printer to avoid printhead gear wear.
- Load the paper into the printer and pull some paper outside the cutter, following the direction shown in 2.
- Close the cover to complete paper loading (see 3).
- **Notice:** If the printer prints blank paper, please check whether the paper roll has been loaded in the correct direction.
- **Tips:** To clean a label printhead, it is recommended to use a cotton swab dipped in alcohol or a alcohol prep pad (75% isopropyl alcohol) to wipe the printhead.

Table for Names and Content Identification

Table for Names and Content Identification of Toxic and Hazardous Substances in this Product

Part Name	Toxic or Hazardous Substances and Elements									
	Pb	Hg	Cd	Cr(VI)	PBB	PBDE	DEHP	DBP	BBP	DIBP
Circuit Board Component	×	○	○	○	○	○	○	○	○	○
Structural Component	○	○	○	○	○	○	○	○	○	○
Packaging Component	○	○	○	○	○	○	○	○	○	○

- **○:** indicates that the content of the toxic and hazardous substance in all homogeneous materials of the component is below the limit specified in SJ/T 11363-2006.
- **X:** indicates that the content of the toxic and hazardous substance in at least one homogeneous material of the component exceeds the limit stipulated in SJ/T 11363-2006.
- However, the reason, that there is no mature and replaceable technology in the industry at present.
- The products that have reached or exceeded environmental protection service life should be recycled and reused according to the Regulations on Control and Management of Electronic Information Products, and should not be discarded randomly.

Notices

Safety Warning

- Connect the AC plug to the AC socket corresponding to the marked input of the power adapter.
- To avoid injury, unauthorised persons shall not open the power adapter.
- This is a Class A product. This product may cause radio interference in living environments.
- In that case, the user may be required to take adequate measures against interference.

Battery replacement:

1. Explosion danger may arise if replacing with the wrong battery
2. The replaced battery shall be disposed of by maintenance personnel, and please do not throw it into the fire

Significant Safety Instructions

- Do not install or use the device during lightning storms to avoid the potential risks of lightning shock.
- Please turn off the power immediately if you notice an abnormal odour, heat or smoke.
- The paper cutter is sharp. Please do not touch

Suggestions

- Do not use the terminal near water or moisture to prevent liquid from falling into the terminal.
- Do not use the terminal in extremely cold or hot environments, such as near flames or lit cigarettes.
- Do not drop, throw or bend the device;
- Use the terminal in a clean and dust-free environment if possible to prevent small items from falling into the terminal.
- Please do not use the terminal near medical equipment without permission.

Statements

The Company does not assume responsibilities for the following actions:

- Damages caused by use and maintenance without complying with the conditions specified in this guide;
- The Company will not assume any responsibilities for the damages or problems caused by optional items or consumables (rather than the initial products or approved products of the Company).
- The customer is not entitled to change or modify the product without our consent.
- The product's operating system supports official system updates, but if you change the operating system to a third-party ROM system or alter the system files by system cracking, it may cause system instability and security risks and threats.

Disclaimer

- As a result of product upgrading, some details in this document may not match the product, and the actual product shall govern. The Company reserves the right to interpret this document.
- The Company also reserves the right to alter this specification without prior notice.

EU regulatory conformance

- Hereby, Shanghai Sunmi Technology Co., Ltd. declares that this device complies with the essential requirements and other relevant provisions of Radio Equipment Directive 2014/53/EU.
- The description of accessories and components, including software, which allows the radio equipment to operate as intended, can be obtained in the full text of the EU declaration of conformity is available at the following internet address:

<https://developer.sunmi.com/docs/read/en-US/maaeghjk480>

RESTRICTIONS OF USE


- This product may be used in the following European member states, subject to the following restrictions.
- For products that operate in the frequency band 5150-5350MHz and 5945-6425 MHz


(If the product supports 6e), wireless access systems (WAS), including radio local area networks (RLANS), shall be restricted to indoor use.



- **EU Representative:** SUNMI France SAS 186, avenue Thiers, 69006 Lyon, France



-  This symbol means that it is forbidden to dispose of the product with normal household waste.
- At the end of the product life cycle, waste equipment should be taken to designated collection points, returned to the distributor when purchasing a new product, or contact your local authority representative for detailed information on WEEE recycling.

	AT	BE	BG	HR	CY	CZ	DK
	EE	FI	FR	DE	EL	HU	IE
	IT	LV	LT	LU	MT	NL	PL
	PT	PO	SK	SI	ES	SE	UK(NI)
	IS	LI	NO	CH	TR		
Note: In all EU member states, operation of 5150-5350MHz and 5945-6425MHz (If the product support 6e) restricted to indoor use only.							

RF Exposure Statement (SAR)

- This equipment complies with EU radiation exposure limits set forth for an uncontrolled environment.
- Please refer to the instructions on the SUNMI website for specific values.

Specifications

Frequency and Power for EU:

- Please refer to the instructions on the SUNMI website for specific values.

Band	Frequency	Power (dBm)
GSM900	880-915	34.00
DCS1800	1710-1785	31.00
WCDMA Band I	1920-1980	24.00
WCDMA Band VIII	880-915	24.00
LTE Band 1	1920-1980	25.00
LTE Band 3	1710-1785	25.00
LTE Band 7	2500-2570	24.50

LTE Band 8	880-915	25.00
LTE Band 20	832-862	25.00
LTE Band 28	703-748	23.00
LTE Band 38	2570-2620	25.00
LTE Band 40	2300-2400	25.00
BT	2402-2480	9.39
BLE	2402-2480	5.34
WLAN	2412-2472	17.55
WLAN	5150-5350	15.98
WLAN	5470-5725	15.54
WLAN	5725-5850	13.02
GNSS	1559-1610	
NFC	13.56	42.45dBμV/m@10m

Fcc Statements

This device complies with Part 15 of the FCC Rules. Operation is subject to the following two conditions:

1. This device may not cause harmful interference,
2. This device must accept any interference received, including interference that may cause undesired operation.

Caution: The user is cautioned that changes or modifications not expressly approved by the party responsible for compliance could void the user's authority to operate the equipment.

Note: This equipment has been tested and found to comply with the limits for a Class B digital device, pursuant to part 15 of the FCC Rules. These limits are designed to provide reasonable protection against harmful interference in a residential installation. This equipment generates, uses and can radiate radio frequency energy and, if not installed and used in accordance with the instructions, may cause harmful interference to radio communications. However, there is no guarantee that interference will not occur in a particular installation. If this equipment does cause harmful interference to radio or

television reception, which can be determined by turning the equipment off and on, the user is encouraged to try to correct the interference by one or more of the following measures:

- Reorient or relocate the receiving antenna.
- Increase the separation between the equipment and receiver.
- Connect the equipment into an outlet on a circuit different from that to which the receiver is connected.
- Consult the dealer or an experienced radio/TV technician for help.

ISED Canada compliance statements

This device complies with ISED Canada licence-exempt RSS standard(s). Operation is subject to the following two conditions:

1. This device may not cause interference
2. This device must accept any interference, including interference that may cause undesired operation of the device.

The device for operation in the band 5150-5250 MHz is only for indoor use to reduce the potential for harmful interference to co-channel mobile satellite systems.

Product Warranty Card

- **Product Name:** _____
- **Product Model:** _____
- **Product Number:** _____
- **Purchase Date:** _____
- **Warranty Period:** From the date of purchase, our company provides a one-day warranty.
- Free warranty service will not be provided in the following circumstances:
 - Unauthorised disassembly or repair of the product.
 - Damage to the product barcode or fragile label, or alteration or mutilation of the warranty card.
 - Failure caused by failure to operate the device in accordance with the instructions.

- Failure, scratches, or breakage due to water damage or dropping.
- Failure or damage caused by force majeure.
- **Out of warranty period:** _____

Contact Information

- **Company Address:** _____
- **Contact Phone Number:** _____

Manufacture

- Shanghai Sunmi Technology Co., Ltd.
- Room 505, KIC Plaza, No.388 Song Hu Road, Yang Pu District,
- Shanghai, China




Frequently Asked Questions

What should I do if I have trouble operating the equipment?

In case of difficulties, kindly seek advice from the dealer or a knowledgeable radio/TV technician.

Documents / Resources

	<p>Sunmi V2S plus T5F0A Portable Data Processing Terminal [pdf] User Guide</p> <p>2AH25T5F0A, V2S plus T5F0A Portable Data Processing Terminal, V2S plus T5F0A, Portable Data Processing Terminal, Data Processing Terminal, Processing Terminal, Terminal</p>
---	--

References

- [User Manual](#)

■ SUnml

🔑 2AH25T5F0A, Data Processing Terminal, Portable Data Processing Terminal, Processing Terminal, SUnml, Terminal, V2S plus T5F0A, V2S plus T5F0A Portable Data Processing Terminal

Leave a comment

Your email address will not be published. Required fields are marked *

Comment *

Name

Email

Website

☐ Save my name, email, and website in this browser for the next time I comment.

Post Comment

Search:

e.g. whirlpool wrf535swhz

Search

[Manuals+](#) | [Upload](#) | [Deep Search](#) | [Privacy Policy](#) | [@manuals.plus](#) | [YouTube](#)

This website is an independent publication and is neither affiliated with nor endorsed by any of the trademark owners. The "Bluetooth®" word mark and logos are registered trademarks owned by Bluetooth SIG, Inc. The "Wi-Fi®" word mark and logos are registered trademarks owned by the Wi-Fi Alliance. Any use of these marks on this website does not imply any affiliation with or endorsement.

