



sunmi T5820 V2 SE POS Terminal with Built-In Printer User Guide

[Home](#) » [Sunmi](#) » sunmi T5820 V2 SE POS Terminal with Built-In Printer User Guide 

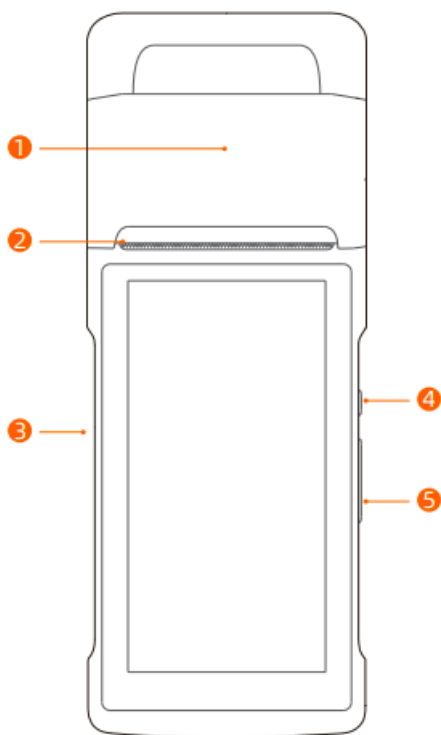
sunmi T5820 V2 SE POS Terminal with Built-In Printer User Guide

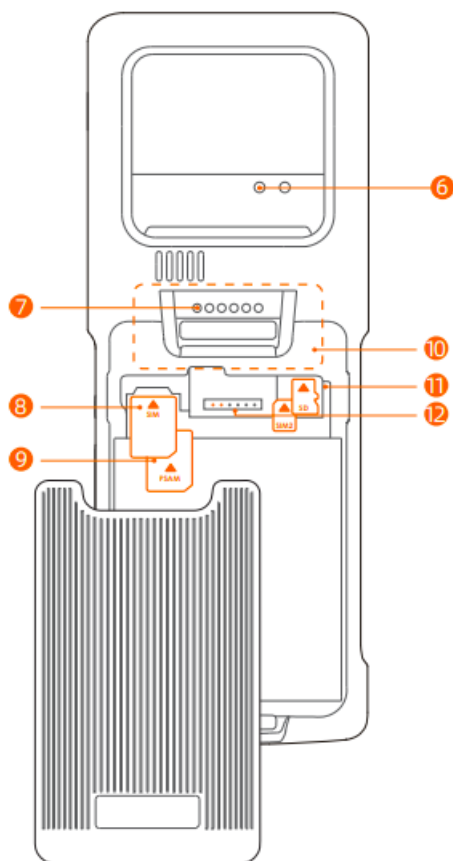


Contents

- 1 Quick Start
- 2 Printing Instructions
- 3 Safety Warning
- 4 Significant Safety Instructions
- 5 Suggestions
- 6 Statements
- 7 Disclaimer
- 8 RF Exposure Statement (SAR)
- 9 Technical specifications
- 10 FCC compliance statement
- 11 ISED Canada compliance statements
- 12 EU regulatory conformance
- 13 Technical features and characteristic
- 14 Documents / Resources
 - 14.1 References
- 15 Related Posts

Quick Start





1. **NFC Reader (Optional)**

It is used to read NFC cards such as membership cards.

2. **Printer**

It's used to print receipts when the device is on.

3. **Type-C**

It can be used for charging devices or debugging devices by developers.

4. **Power Button**

Short press: Unlock or lock the screen;

Long press: When the device is off, long press for 2 to 3 seconds to boot up the device;

When the device is in use, long press for 2 to 3 seconds to shut down or reboot the device;

In case of device crash, long press for 11 seconds to reboot automatically.

5. **Volume Button**

It's used to adjust the volume.

6. **Rear Camera**

It supports photo taking and 1D/2D barcode scanning.

7. **Pogo pin**

It can help realize communication and charging functions when is used with scanning accessories or connected to extended cradles.

8. **SIM Card Slot**

It's used for inserting a SIM card.

9. **PSAM Card Slot (Optional)**

It's used for inserting an encrypted PSAM card.

10. **Fiscal Module (Optional)**

It's used for inserting the tax control module.

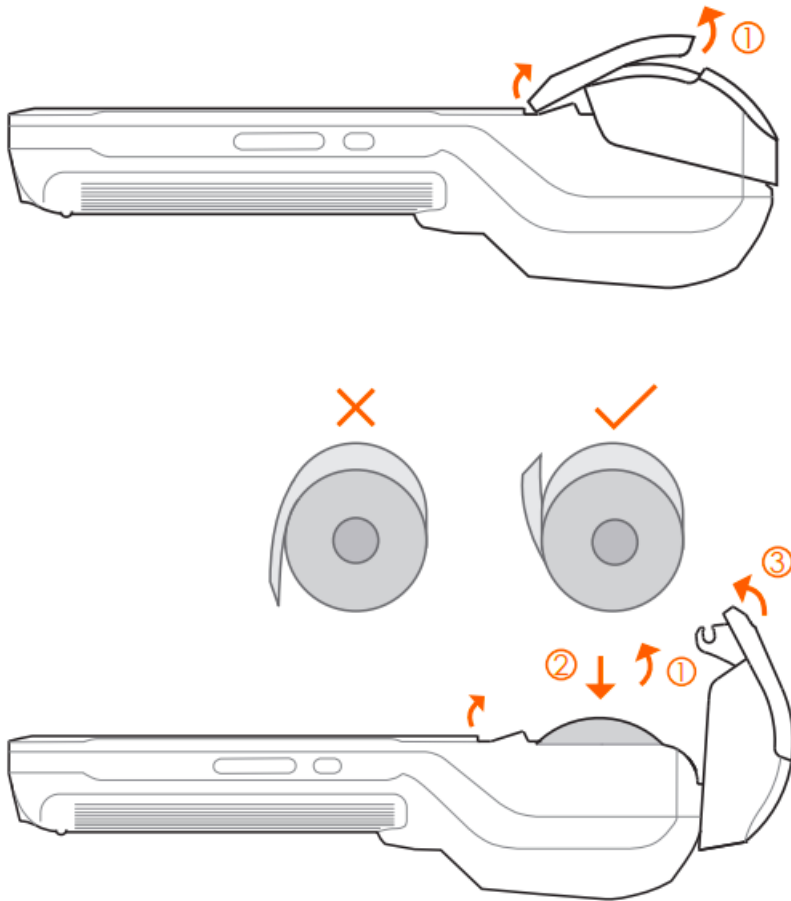
11. Nano SIM Card Slot and Micro SD Card Slot

They're used for inserting a Nano SIM card and a Micro SD card.

12. Battery Interface

It's used for inserting a battery cable.

Printing Instructions



This device can load a 58mm thermal receipt or label paper roll.
The paper roll spec is $57\pm0.5\text{mm}\times\varnothing50\text{mm}$.

- Please open the printer by lifting the lid (see ①). Please do not force open the printer to avoid printhead gear wear;
- Load the paper into the printer and pull some paper outside the cutter following the direction shown in ②;
- Close the cover to complete paper loading (see ③).

Notice: If the printer prints blank paper, please check whether the paper roll has been loaded in the correct direction.

Tips: To clean a label printhead, it is recommended to use a cotton swab dipped in alcohol or a alcohol prep pad (75% isopropyl alcohol) to wipe the printhead.

Notices

Safety Warning

Connect the AC plug to the AC socket corresponding to the marked input of the power adapter;
To avoid injury, unauthorized persons shall not open the power adapter;
This is a Class A product. This product may cause radio interference in living environments.
In that case, the user may be required to take adequate measures against interference.
Battery replacement:

1. Explosion danger may arise if replacing with the wrong battery!
2. The replaced battery shall be disposed of by maintenance personnel, and please do not throw it into fire!

Significant Safety Instructions

Do not install or use the device during lightning storms to avoid the potential risks of lightning shock;
Please turn off the power immediately if you notice abnormal odor, heat or smoke;
The paper cutter is sharp, please do not touch!

Suggestions

Do not use the terminal near water or moisture to prevent liquid from falling into the terminal;
Do not use the terminal in extremely cold or hot environments, such as near flames or lit cigarettes;
Do not drop, throw or bend the device;
Use the terminal in a clean and dust-free environment if possible to prevent small items from falling into the terminal;
Please do not use the terminal near medical equipment without permission.

Statements

The Company does not assume responsibilities for the following actions:
Damages caused by use and maintenance without complying with the conditions specified in this guide;
The Company will not assume any responsibilities for the damages or problems caused by optional items or consumables (rather than the initial products or approved products of the Company).
The customer is not entitled to change or modify the product without our consent.
The product's operating system supports official system updates, but if you change the operating system into a third party ROM system or alter the system files by system cracking, it may cause system instability and security risks and threats.

Disclaimer

As a result of product upgrading, some details in this document may not match the product, and the actual product shall govern. The Company reserves the right of interpretation of this document. The Company also reserves the right to alter this specification without prior notice.

RF Exposure Statement (SAR)

RF Exposure Statements (SAR) This device has been tested and meets EU, FCC and IC RSS-102 applicable limits for radio frequency (RF) exposure. Please visit: www.sunmi.com. When properly worn on the body, the maximum SAR value of 1.231W/kg (1gSAR, test distance :5mm limit 1.6W/kg) meets the RSS-102 readiness requirements. SAR compliance for bodyworn operating configurations is limited to belt-clips and holsters that have no metallic components in the assembly and cause the device to operate with the minimum separation distance of 1.0 cm, as described in this filing. End-users must be informed of the body-worn.

Technical specifications

For more technical specifications, please visit: www.sunmi.com.

PRODUCT SAFETY WARNINGS

To prevent possible injury, please read all instructions and safety information before you use the product.

Operating temperature: -10°C ~ 45 °C,

Storage temperature: – 20 °C ~ 60 °C

Charging temperature -10°C ~ 40 °C.

Battery safety

Charge battery only at ambient temperatures ranging from 0°C to 60°C.

(1) CAUTION: Danger of explosion if battery is incorrectly replaced.

Replace only with the same or equivalent type of battery recommended by the manufacturer.

Dispose of used batteries according to the battery manufacturer's instructions.

(2) CAUTION: RISK OF EXPLOSION IF BATTERY IS REPLACED BY AN INCORRECT TYPE.

The product information listed on this page may be updated from time to time due to product upgrades or other reasons. SUNMI reserves the right to modify the product information and contents on this page without notice.

FCC compliance statement

This device complies with Part 15 of the FCC Rules.

Operation is subject to the following two conditions:

1. this device may not cause harmful interference, and
2. this device must accept any interference received, including interference that may cause undesired operation.

Note: This equipment has been tested and found to comply with the limits for a Class B digital device, pursuant to part 15 of the FCC Rules. These limits are designed to provide reasonable protection against harmful interference in a residential installation. This equipment generates, uses and can radiate radio frequency energy and, if not installed and used in accordance with the instructions, may cause harmful interference to radio communications. However, there is no guarantee that interference will not occur in a particular installation. If this equipment does cause harmful interference to radio or television reception, which can be determined by turning the equipment off and on, the user is encouraged to try to correct the interference by one or more of the following measures:

- Reorient or relocate the receiving antenna.
- Increase the separation between the equipment and receiver.
- Connect the equipment into an outlet on a circuit different from that to which the receiver is connected.
- Consult the dealer or an experienced radio/TV technician for help.

Caution: The user is cautioned that changes or modifications not expressly approved by the party responsible for compliance could void the user's authority to operate the equipment.

ISED Canada compliance statements

This device complies with ISED Canada licence-exempt RSS standard(s). Operation is subject to the following two conditions:

1. this device may not cause interference, and
2. this device must accept any interference, including interference that may cause undesired operation of the

device.

the device for operation in the band 5150-5250 MHz is only for indoor use to reduce the potential for harmful interference to co-channel mobile satellite systems;

EU regulatory conformance

Conformity CE


Hereby, Shanghai Sunmi Technology Co., Ltd. declares that this device is in compliance with the essential requirements and other relevant provisions of Radio Equipment Directive 2014/53/EU. The full text of the EU declaration of conformity is available at the following internet address: www.sunmi.com.

INFORMATION ABOUT THE SOFTWARE

The description of accessories and components, including software, which allow the radio equipment to operate as intended, can be obtained in the full text of the EU declaration of conformity at the following internet address: www.sunmi.com.

RESTRICTIONS OF USE

The 5150-5350MHz band is restricted to indoor use in the UK and for the following countries.

	AT	BE	BG	CY	CZ	DE	DK	EE	ES	FI	FR
	GR	HU	IE	IT	LT	LU	LV	MT	NL	PL	PT
	RO	SE	SI	SK	UK (NI)						



EU Representative :SUNMI France SAS
186,avenue Thiers,69006 Lyon,France



This symbol means that it is forbidden to dispose the product of with normal household waste. At the end of the product life cycle, waste equipment should be taken to designated collection points, returned to the distributor when purchasing a new product, or contact your local authority representative for detailed information on WEEE recycling.

Manufacture

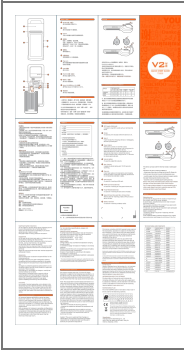
Shanghai Sunmi Technology Co., Ltd.
Room 505, No.388 Song Hu Road, Yang Pu
District, Shanghai, China

Technical features and characteristic

Mode/Band	Operation Frequency	Transmitted
-----------	---------------------	-------------

GSM 900	880-915 MHz	33.63dBm
GSM 1800	1710-1785 MHz	30.40dBm
WCDMA Band I	1920-1980 MHz	23.43dBm
WCDMA Band V	824-849 MHz	22.95dBm
WCDMA Band VIII	880-915 MHz	23.79dBm
LTE BAND 1	1920-1980 MHz	23.85dBm
LTE BAND 3	1710-1785 MHz	23.63dBm
LTE BAND 5	824-849 MHz	22.88dBm
LTE BAND 7	2500-2570 MHz	23.31dBm
LTE BAND 8	880-915 MHz	23.45dBm
LTE BAND 20	832-862 MHz	22.83dBm
LTE BAND 28	703-803MHz	23.03dBm
LTE BAND 34	2010-2025 MHz	23.72dBm
LTE BAND 38	2570-2620 MHz	24.15dBm
LTE BAND 40	2300-2400 MHz	23.53dBm
LTE BAND 41	2535-2655 MHz	23.76dBm
BT	2402MHz-2480MHz	11.56dBm
BLE	2402MHz-2480MHz	-2.69 dBm
2.4G WLAN	2412MHz-2472MHz	17.87dBm
5G WLAN	5180-5240 MHz	19.59dBm
5G WLAN	5260-5320MHz	19.80dBm
5G WLAN	5500-5700 MHz	19.97dBm
5G WLAN	5745-5825 MHz	13.82dBm
NFC	13.56 MHz	31.677dBμA/m @ 3M

Documents / Resources

	<p>sunmi T5820 V2 SE POS Terminal with Built-In Printer [pdf] User Guide 2AH25T5820C, 2AH25T5820C, T5820C, T5820 V2 SE POS Terminal with Built-In Printer, POS Terminal with Built-In Printer, Terminal with Built-In Printer, Built-In Printer, Printer</p>
---	--

References

-  [SUNMI - BloT for Business 4.0](#)