

Sunmi T3PRO Separate Monitor



Sunmi T3PRO Separate Monitor User Guide

[Home](#) » [SUnmi](#) » Sunmi T3PRO Separate Monitor User Guide 

Contents

- 1 Sunmi T3PRO Separate Monitor
- 2 Product Information
- 3 Product Usage Instructions
- 4 DIMENSION
- 5 CONNECTION
- 6 FCC STATEMENT
- 7 Documents / Resources
 - 7.1 References

SUNMI

Sunmi T3PRO Separate Monitor



Product Information

Specifications:

- **Screen Size:**
 - **Main Display:** 15.6 inches
 - **Customer Display (optional):** 10.1 inches
- **Resolution:**
 - **Main Display:** 1920×1080 pixels
 - **Customer Display (optional):** 1200×600 pixels
- **Connectivity:** USB Type-C
- **Languages Supported:** EN, DE, ES, AR, JP, TW

Product Usage Instructions

Main Display Setup:

1. Connect the device to a power source using the provided USB Type-C cable.
2. Power on the device and select your preferred language from the available options.
3. Adjust the display settings to customize brightness, contrast, and other parameters according to your preference.

Customer Display Setup (Optional):

1. If using the optional customer display, connect it to the designated port on the main device.
2. Follow the on-screen instructions to configure the customer display settings.

FAQ:

- **What should I do if the display language is incorrect?**

If the display language is incorrect, navigate to the settings menu and select the desired language from the language options provided.

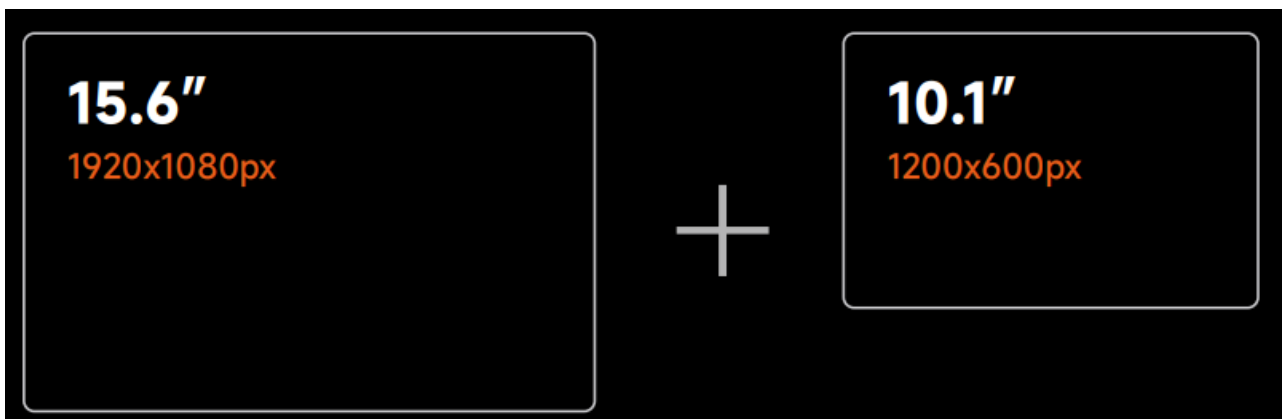
- **How can I adjust the screen resolution?**

To adjust the screen resolution, go to the display settings menu and select the appropriate resolution from the available options.

- **Can I use a different cable for connectivity?**

It is recommended to use the provided USB Type-C cable for optimal performance and compatibility.

DIMENSION



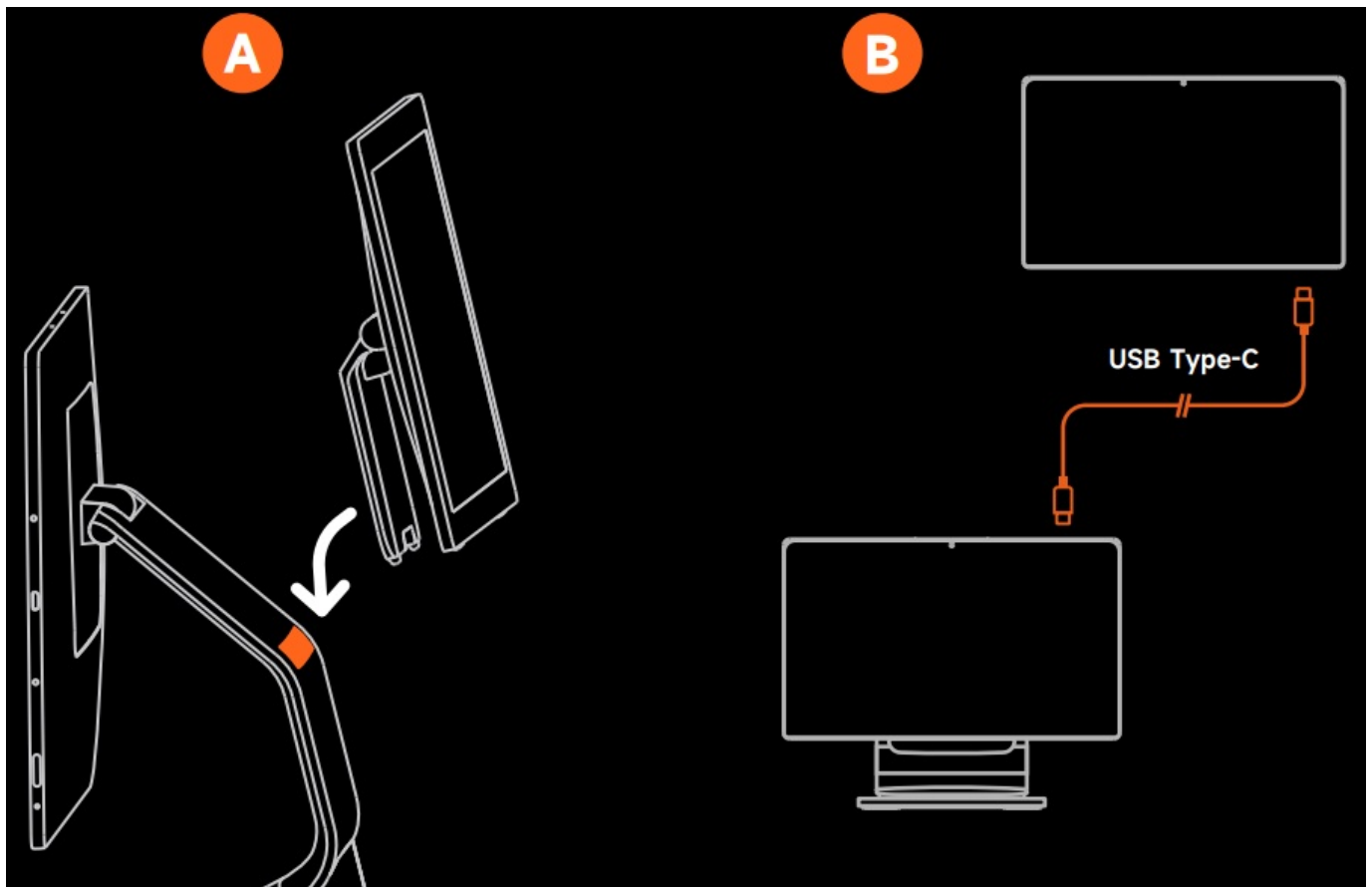
- **Main display right side**

15.6" customer display right side (optional)

- **Main display right side (rotated)**

10.1" customer display right side (optional)

CONNECTION



FCC STATEMENT

RF Exposure Statement (SAR)

- This equipment complies with EU, FCC and IC RSS-102 radiation exposure limits set forth for an uncontrolled environment.
- This equipment should be installed and operated with minimum distance 20cm between the radiator & your body.

ISED Canada compliance statements

This device complies with ISED Canada licence-exempt RSS standard(s). Operation is subject to the following two conditions: (1) this device may not cause interference, and (2) this device must accept any interference, including interference that may cause undesired operation of the device.



EU Representative: SUNMI France SAS 186, avenue Thiers, 69006 Lyon, France

This device complies with the basic recommendations and other relevant measures in the 2014/30/EU and 2014/35/EU directives. The full text of the EU Declaration of Conformity is available at the following internet address <https://developer.sunmi.com/docs/read/en-US/maaeghjk480>.



This symbol means that it is forbidden to dispose the product of with normal product of with normal household waste. At the end of the product life cycle, waste equipment should be taken to designated collection points, returned to the distributor when purchasing a new product, or contact your local authority representative for detailed information on WEEE recycling.



This device complies with part 15 of the FCC Rules. Operation is subject to the following two conditions:(1) This device may not cause harmful interference, and (2) this device must accept any interference received, including interference that may cause undesired operation.

Manufacturer: Shanghai Sunmi Technology Co., Ltd.
Address: Room 505, No. 388, Song Hu Road, Yang Pu District, Shanghai, China

Scan to know more:



Disclaimer

Due to product update, certain details of this document may be inconsistent with the product, and the real device shall prevail. SUNMI owns the interpretative right of this document, and reserves the right to modify this user guide without prior notice.

Documents / Resources

	Sunmi T3PRO Separate Monitor [pdf] User Guide T3PRO, T3PRO Separate Monitor, Separate Monitor, Monitor
--	---

References

- developer.sunmi.com/docs/read/en-US/maaeghjk480
- [User Manual](#)

[Manuals+](#), [Privacy Policy](#)

This website is an independent publication and is neither affiliated with nor endorsed by any of the trademark owners. The "Bluetooth®" word mark and logos are registered trademarks owned by Bluetooth SIG, Inc. The "Wi-Fi®" word mark and logos are registered trademarks owned by the Wi-Fi Alliance. Any use of these marks on this website does not imply any affiliation with or endorsement.