



Contents [[hide](#)]

- [1 Sunmi T3L Third Generation Desktop Terminal POS System](#)
- [2 Power On](#)
- [3 Connect a Customer Display](#)
- [4 Network settings](#)
- [5 Optional Functions](#)
- [6 Declaration](#)
- [7 Important Safety Instructions](#)
- [8 FCC compliance statement](#)
- [9 RESTRICTIONS OF USE](#)
- [10 Battery replacement](#)
- [11 FAQ](#)
- [12 Documents / Resources](#)
 - [12.1 References](#)



Sunmi T3L Third Generation Desktop Terminal POS System

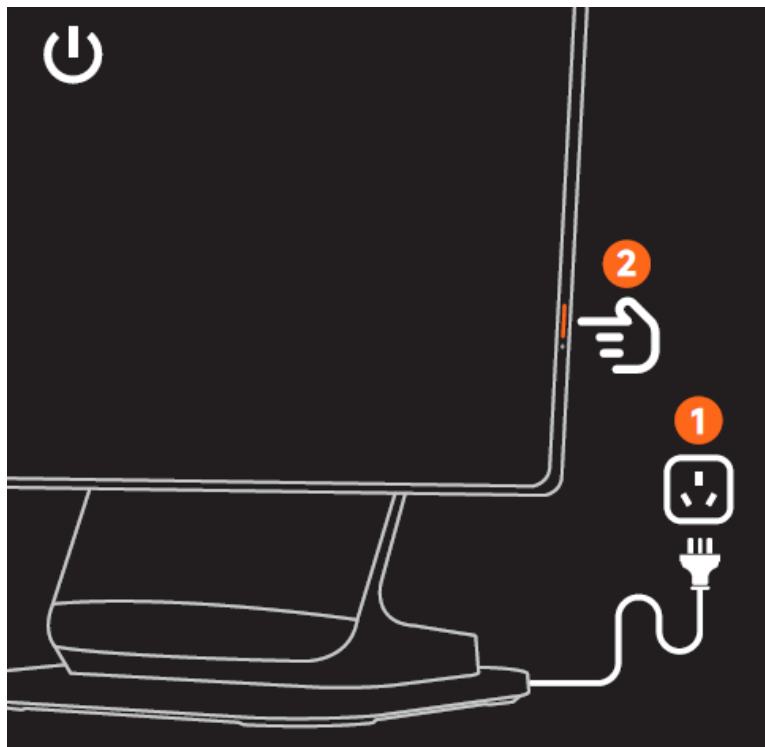


Specifications:

- Model: L15C2, L15D2
- Screen Size: 15.6 inches
- Resolution: 1920×1080 pixels

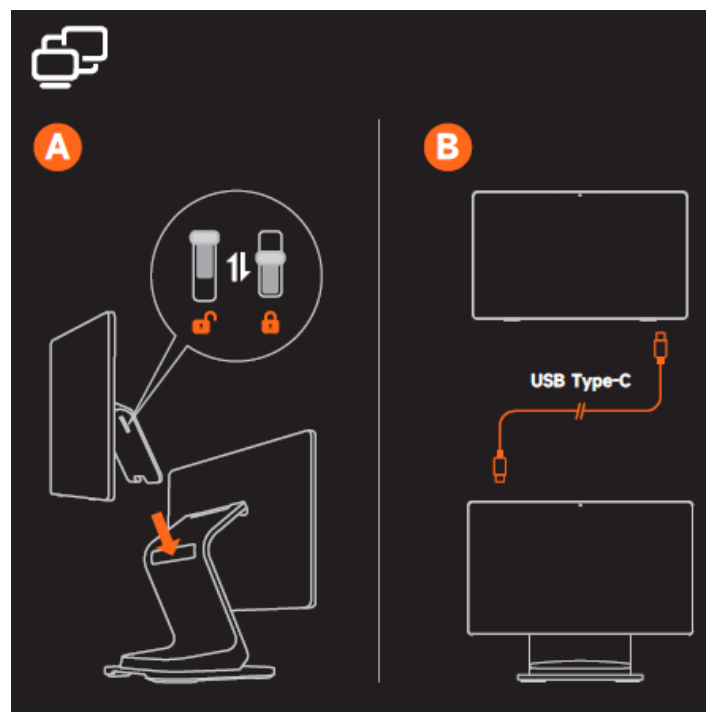
Power On

1. Connect to the power supply
 - Plug the power adapter into the power port at the bottom of terminal.
 - Connect the other end of the adapter to the AC power socket.
2. Press the power button to turn on the screen and enter into the boot interface, then you can operate in accordance with the guidance.
 - Press the button to boot up the device when it is off.
 - Press and hold the button for 2-3 seconds to power off or reboot the device when it is on. Press and hold the button for 11 seconds to power off the device when it crashes.

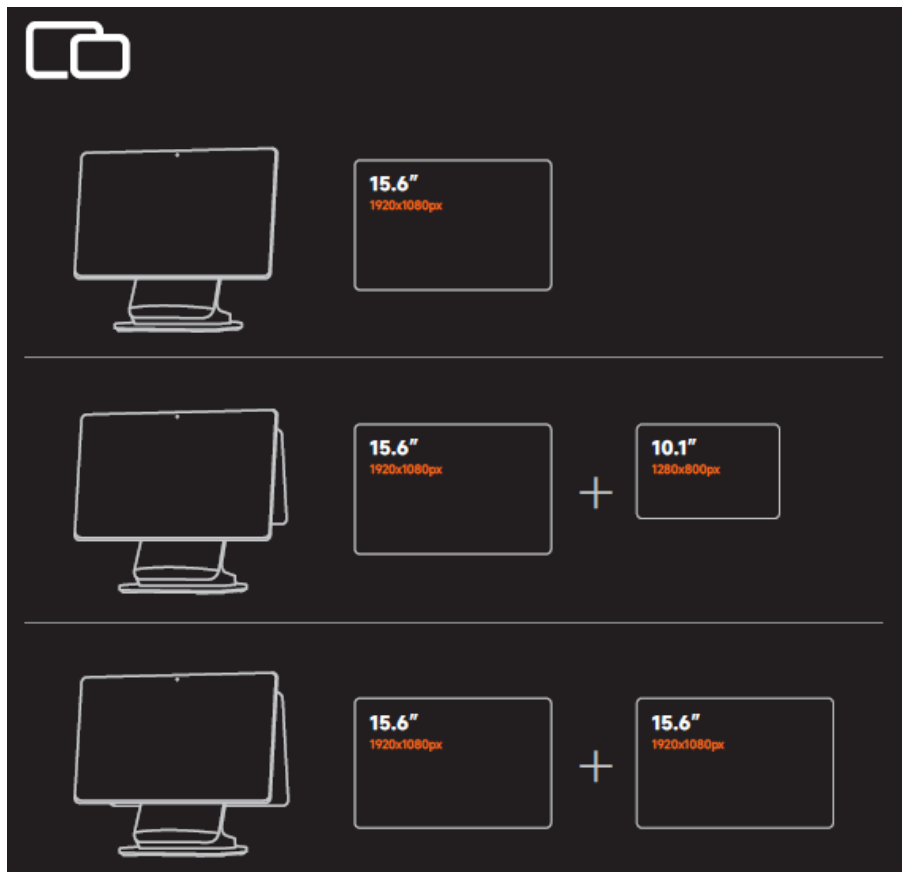


Connect a Customer Display

- **A** Connect with a USB Type-C cable.
- **B** Insert the display according to the direction shown.

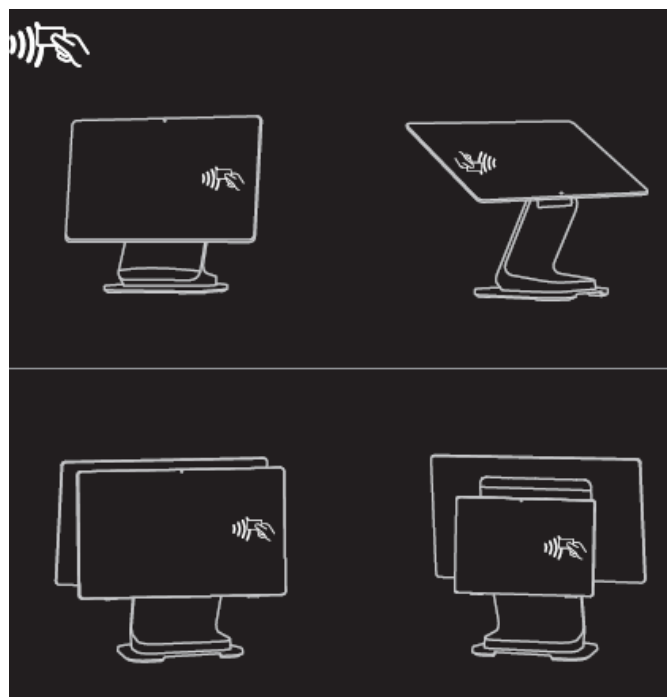


Network settings



Wi-Fi setting

- Click “Setting” button, and then enable WLAN, enter WLAN search interface to wait for its searching and listing available WLAN hotspots;
- Click WLAN to be connected. If an encrypted network is selected, you are required to enter the access password to get connected.



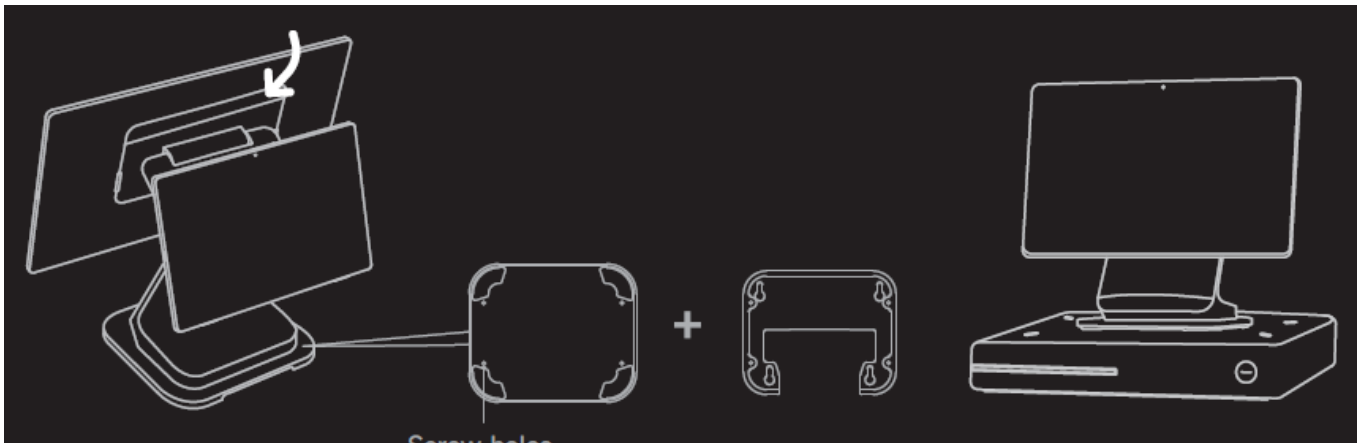
NFC

Main display right side

Main display right side (rotated) 15.6" customer display right side (optional) 10.1"
customer display right side (optional)

Optional Functions

- TF card slot / SIM card slot (under the cover trim)
- The base screw holes are used to fix the cash drawer.



Points for Attention

Safety Warning

- Please insert the AC plug into the AC socket corresponding to the input voltage of the power adapter;
- It is strictly forbidden to use it at a site with the existence of any potential explosive gas;
- Non-professionals are not allowed to tear down the power adapter to avoid dangers;
- Operating temperature: 0°C ~ 40°C, Storage temperature: -20°C ~ 60°C.
- To avoid injury, unauthorized persons shall not open the power adapter;
- Only suitable for safe use at altitudes up to 5000 meters.
- This equipment is not suitable for use in locations where children are likely to be present.

Declaration

The company is not responsible for the following actions:

- Damage caused by use and maintenance without the conditions described in this guide.
- The company will not be responsible for any damages or problems caused by the alternatives or consumables (not the original products or approved products provided by the company).
- Without consent of the company. It is not authorized to make product modifications or changes.
- The operating system of this product only supports official system updates. If the user uses a third party ROM system to update the device or modifies the system files by cracking, it may lead to system instability and may bring safety risks and threats.

Important Safety Instructions

- Do not install or use the device during lightning storms to avoid the potential risks of lightning shock;
- When you have discovered unusual odor, overheat or smoke, please cut off the power supply at once!

Suggestions

- Do not use it near water or in humid environment to avoid fluid to fall into the terminal;
- Do not use it in extreme cold or hot environment. For example: near an ignition source or a lighted cigarette;
- Do not drop, throw or bend the device;
- Do not use the device near medical facilities without permission;
- Try best to use it in a clean and dust-free environment, to prevent small items from dropping into the terminal.

Disclaimer

Due to product update, certain details of this document may be inconsistent with the product, and the real device shall prevail. SUNMI owns the interpretative right of this document, and reserves the right to modify this user guide without prior notice.

App/Software

Use the POS terminal to accept payments from customers in supermarkets, shopping malls, department stores, convenience stores or restaurants, etc. You can connect the terminal to a network and open the App Store to get relevant apps. How to check app details: select “Setting->App” and select the app name to check its details; How to uninstall apps: select “Setting->App->Man-age App” to uninstall an app, or you can drag the app to the trash to uninstall it.

FCC compliance statement

This device complies with Part 15 of the FCC Rules. Operation is subject to the following two conditions:

1. This device may not cause harmful interference, and
2. This device must accept any interference received, including interference that may cause undesired operation.

Note: This equipment has been tested and found to comply with the limits for a Class B digital device, pursuant to part 15 of the FCC Rules. These limits are designed to provide reasonable protection against harmful interference in a residential installation. This equipment generates, uses and can radiate radio frequency energy and, if not installed and used in accordance with the instructions, may cause harmful interference to radio communications. However, there is no guarantee that interference will not occur in a particular installation. If this equipment does cause harmful interference to radio or television reception, which can be determined by turning the equipment off and on, the user is encouraged to try to correct the interference by one or more of the following measures:

- Reorient or relocate the receiving antenna.
- Increase the separation between the equipment and receiver.
- Connect the equipment into an outlet on a circuit different from that to which the receiver is connected.
- Consult the dealer or an experienced radio/TV technician for help.

Caution: The user is cautioned that changes or modifications not expressly approved by

the party responsible for compliance could void the user's authority to operate the equipment.

ISED Canada compliance statements

This device complies with ISED Canada licence-exempt RSS standard(s). Operation is subject to the following two conditions:

- This Class B digital apparatus complies with Canadian ICES-003.

EU regulatory conformance

Hereby, Shanghai Sunmi Technology Co., Ltd. declares that this device is in compliance with the essential requirements and other relevant provisions of Radio Equipment Directive 2014/53/EU. The full text of the EU declaration of conformity is available at the following internet address: <https://developer.sunmi.com/docs/read/en-US/maaeghjk480>
UK PSTI SoC Website: <https://developer.sunmi.com/docs/read/en-US/xcdaeghjk480>

INFORMATION ABOUT THE SOFTWARE

The description of accessories and components, including software, which allow the radio equipment to operate as intended, can be obtained in the full text of the EU declaration of conformity at the following internet address:

<https://developer.sunmi.com/docs/read/en-US/maaeghjk480>.

RESTRICTIONS OF USE

This product may be used in the following European member states subject to the following restrictions. For products that operate in the frequency band 5.150 to 5.350 GHz, wireless access systems (WAS), including radio local area networks (RLANs), shall be restricted to indoor use.




EU Representative :SUNMI France SAS 186,avenue Thiers,69006 Lyon, France



This symbol means that it is forbidden to dispose the product of with normal household waste. At the end of the product life cycle, waste equipment should be taken to designated collection points, returned to the distributor when purchasing a new

product, or contact your local authority representative for detailed information on WEEE recycling.

AT	BE	BG	HR	CY	CZ	DK	
EE	FI	FR	DE	EL	HU	IE	
IT	LV	LT	LU	MT	NL	PL	
PT	RO	SK	SI	ES	SE	UK(NI)	
IS	LI	NO	CH	TR			
Note: In all EU and UK member states, operation of 5150-5350MHz restricted to indoor use only.							

RF Exposure Statement (SAR)

- This equipment complies with EU, FCC and IC RSS-102 radiation exposure limits set forth for an uncontrolled environment.
- This equipment should be installed and operated with minimum distance 20cm between the radiator & your body.

Energy Star® certification

- The device will be automatically switched in 10 mins display sleep(default) if there is no any operation.
- The time of auto screen off can be change in the setting menu.
- Auto screen off (default 10mins) has been selected for compliance with ENERGY STAR®, And are recommended by the ENERGY STAR® program for optimal energy savings

Battery replacement

- Explosion danger may arise if replacing with the wrong battery!
- The replaced battery shall be disposed of by maintenance personnel, and please do not throw it into fire
- Do not attempt to disassemble the device or replace the battery.
- Otherwise, the battery may be damaged. Please take the device to SUNMI or a SUNMI authorized service provider for services needed.

Technology	Operation Frequency	Power for CE
------------	---------------------	--------------

GSM900	880-915(TX),925-960(RX)	34dBm
DCS1800	1710-1785(TX),1805-1880(RX)	31dBm
WCDMA Band1	1920-1980MHz(TX), 2110-2170MHz(RX)	25dBm
WCDMA Band5	824-849MHz(TX), 869-894MHz(RX)	25dBm
WCDMA Band8	880-915MHz(TX), 925-960MHz(RX)	25dBm
LTE Band 1	1920-1980MHz(TX), 2110-2170MHz(RX)	25dBm
LTE Band 3	1710-1785MHz(TX), 1805-1880MHz(RX)	25dBm
LTE Band 5	824-849MHz(TX), 869-894MHz(RX)	25dBm
LTE Band 7	2500-2570MHz(TX), 2620-2690MHz(RX)	25dBm
LTE Band 8	880-915MHz(TX), 925-960MHz(RX)	25dBm
LTE Band 20	832-862MHz(TX), 791-821MHz(RX)	25dBm
LTE Band 28	703-748MHz(TX), 758-803MHz(RX)	25dBm
LTE Band 34	2010-2025MHz(TX), 2010-2025MHz(RX)	25dBm
LTE Band 38	2570-2620MHz(TX), 2570-2620MHz(RX)	25dBm
LTE Band 40	2300-2400MHz(TX), 2300-2400MHz(RX)	25dBm
LTE Band 41	2496-2690MHz(TX), 2496-2690MHz(RX)	25dBm
BT	2402-2480MHz(TX/RX)	10.30dBm
BLE	2402-2480MHz(TX/RX)	8.21dBm
2.4G WiFi	2412-2472MHz(TX/RX)	17.35dBm
5G WiFi	5150-5250MHz(TX/RX)	17.30dBm
5G WiFi	5250-5350MHz(TX/RX)	17.61dBm

5G WiFi	5470-5725MHz(TX/RX)	17.58dBm
5G WiFi	5725-5850MHz(TX/RX)	10.82dBm
NFC	13.56MHz(TX/RX)	19.29dB μ V/m@10m
GNSS	1559-1610MHz(RX)	/



Scan to know more

- www.sunmi.com
- 400-6666-509

FAQ

- **Q: What is the product used for?**

A: The POS terminal is used to accept payments in various retail settings like supermarkets, malls, and restaurants.


- **Q: How can I uninstall apps from the device?**

A: Navigate to Settings -> App -> Manage App to uninstall an app. Alternatively, you can drag an app to the trash to uninstall it.

- **Q: Is there a way to check app details on the device?**

A: Yes, you can check app details by selecting Setting -> App and choosing the app name to view its details.

Documents / Resources

	Sunmi T3L Third Generation Desktop Terminal POS System [pdf] Instruction Manual 2AH25T3L, 2AH25T3L, t3l, T3L Third Generation Desktop Terminal POS System, T3L, Third Generation Desktop Terminal POS System, Generation Desktop Terminal POS System, Desktop Terminal POS System, Terminal POS System
---	---

References

- [📄 2AH25T3L, 2AH25T3L, t3l, T3L Third Generation Desktop Terminal POS System, T3L, Third Generation Desktop Terminal POS System, Generation Desktop Terminal POS System, Desktop Terminal POS System, Terminal POS System](#)
- [📄 SUNMI - BloT for Business 4.0](#)
- [📄 developer.sunmi.com/docs/read/en-US/xcdaeghjk480](#)
- [User Manual](#)

SUnml

2AH25T3L, Desktop Terminal POS System, Generation Desktop Terminal POS System, SUnml, T3L, T3L Third Generation Desktop Terminal POS System, Terminal POS System, Third Generation Desktop Terminal POS System

—Previous Post

[Sunmi P3K T6831 Terminal User Manual](#)

Next Post—

[Sunmi T6831 Terminal User Manual](#)

Leave a comment

Your email address will not be published. Required fields are marked *

Comment *

Name

Email

Website

☐ Save my name, email, and website in this browser for the next time I comment.

Post Comment

Search:

e.g. whirlpool wrf535swhz

Search

[Manuals+](#) | [Upload](#) | [Deep Search](#) | [Privacy Policy](#) | [@manuals.plus](#) | [YouTube](#)

This website is an independent publication and is neither affiliated with nor endorsed by any of the trademark owners. The "Bluetooth®" word mark and logos are registered trademarks owned by Bluetooth SIG, Inc. The "Wi-Fi®" word mark and logos are registered trademarks owned by the Wi-Fi Alliance. Any use of these marks on this website does not imply any affiliation with or endorsement.