



Sunmi T3 Smart Desktop Terminal User Manual

[Home](#) » [SUnmi](#) » Sunmi T3 Smart Desktop Terminal User Manual 

SUNMI

T3

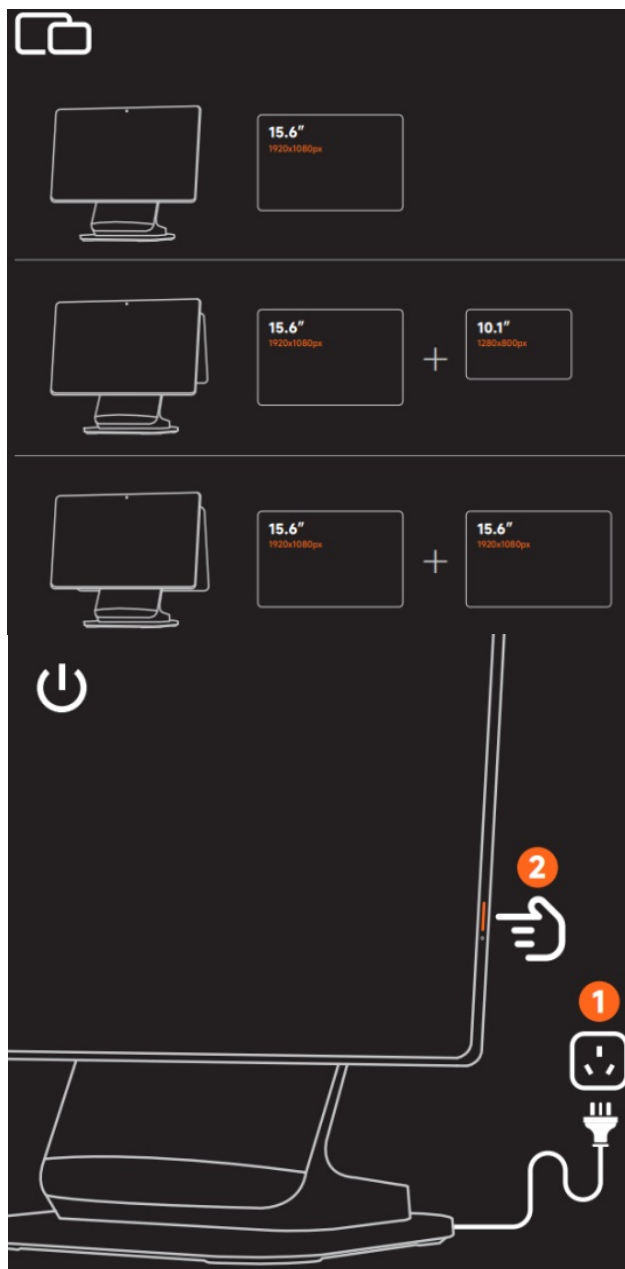


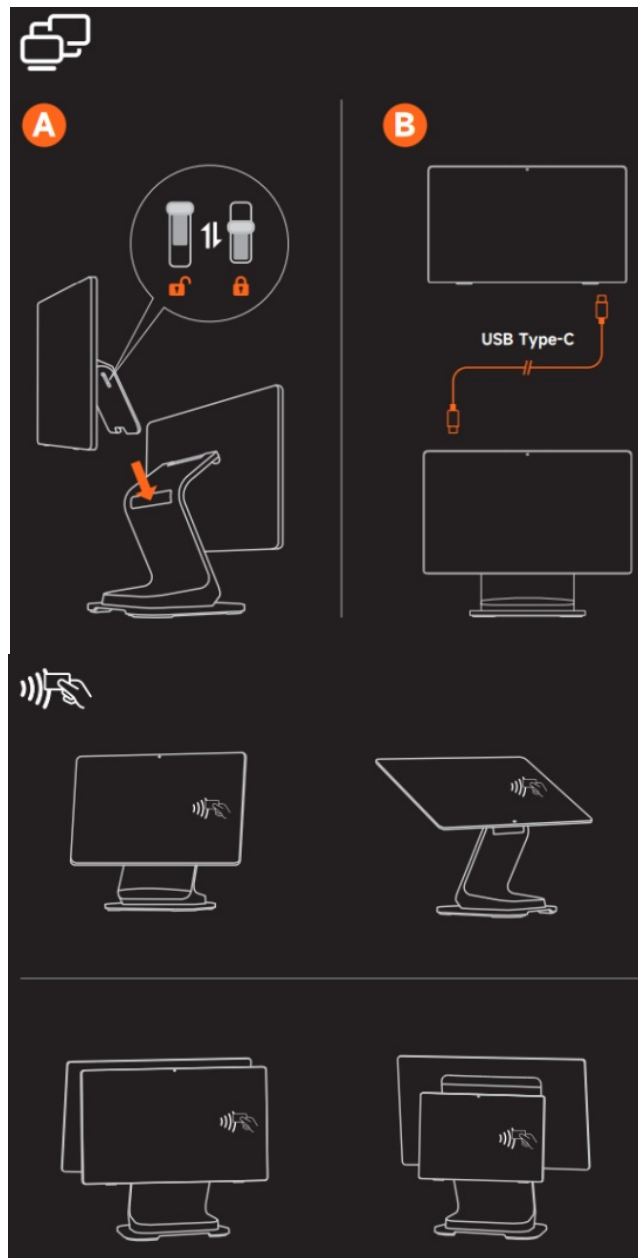
User Manual

Contents

- 1 T3 Smart Desktop Terminal
- 2 Power On
- 3 Network settings
- 4 Optional Functions
- 5 Points for Attention
- 6 FCC compliance statement
- 7 Documents / Resources
 - 7.1 References

T3 Smart Desktop Terminal





Power On

1. Connect to the power supply

Plug the power adapter into the power port at the bottom of terminal.

Connect the other end of the adapter to the AC power socket.

2. Press the power button to turn on the screen and enter into the boot interface, then you can operate in accordance with the guidance.

Press the button to boot up the device when it is off.

Press and hold the button for 2-3 seconds to power off or reboot the device when it is on. Press and hold the button for 11 seconds to power off the device when it crashes.

Network settings

Wi-Fi setting

- Click “Setting” button, and then enable WLAN, enter WLAN search interface to wait for its searching and listing

available WLAN hotspots;

- Click WLAN to be connected. If an encrypted network is selected, you are required to enter the access password to get connected.

Connect a Customer Display



A. Connect with a USB Type-C cable.

B. Insert the display according to the direction shown.

NFC



*NFC (optional)

Main display right side

Main display right side (rotated)

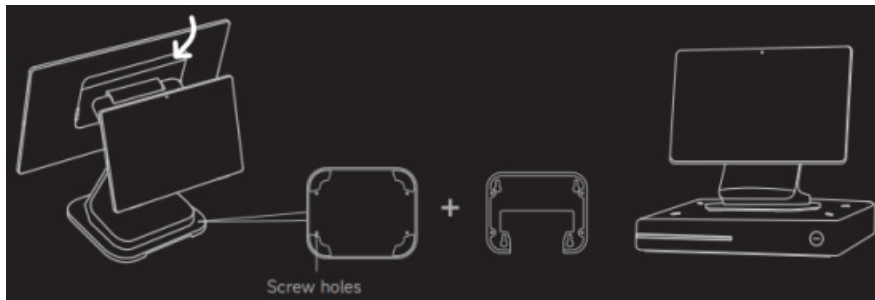
15.6" customer display right side

10.1" customer display right side

Optional Functions

TF card slot / SIM card slot (under the cover trim)

The base screw holes are used to fix the cash drawer.



Points for Attention

Safety Warning

- Please insert the AC plug into the AC socket corresponding to the input voltage of the power adapter;
- It is strictly forbidden to use it at a site with the existence of any potential explosive gas;
- Non-professionals are not allowed to tear down the power adapter to avoid dangers;
- Operating temperature: 0°C ~ 40°C, Storage temperature: -20°C ~ 60°C.
- To avoid injury, unauthorized persons shall not open the power adapter;
- Only suitable for safe use at altitudes up to 5000 meters.
- This equipment is not suitable for use in locations where children are likely to be present.

Declaration

The company is not responsible for the following actions:

- Damage caused by use and maintenance without the conditions described in this guide.
- The company will not be responsible for any damages or problems caused by the alternatives or consumables (not the original products or approved products provided by the company).
- Without consent of the company. It is not authorized to make product modifications or changes.
- The operating system of this product only supports official system updates. If the user uses a thirdparty ROM

system to update the device or modifies the system files by cracking, it may lead to system instability and may bring safety risks and threats.

Important Safety Instructions

- Do not install or use the device during lightning storms to avoid the potential risks of lightning shock;
- When you have discovered unusual odor, overheat or smoke, please cut off the power supply at once!

Suggestions

- Do not use it near water or in humid environment to avoid fluid to fall into the terminal;
- Do not use it in extreme cold or hot environment. For example: near an ignition source or a lighted cigarette;
- Do not drop, throw or bend the device;
- Do not use the device near medical facilities without permission;
- Try best to use it in a clean and dust-free environment, to prevent small items from dropping into the terminal.

Disclaimer

Due to product update, certain details of this document may be inconsistent with the product, and the real device shall prevail. SUNMI owns the interpretative right of this document, and reserves the right to modify this user guide without prior notice.

App/Software

Use the POS terminal to accept payments from customers in supermarkets, shopping malls, department stores, convenience stores or restaurants, etc.

You can connect the terminal to a network and open the App Store to get relevant apps.

How to check app details: select "Setting->App" and select the app name to check its details;

How to uninstall apps: select "Setting->App->Manage App" to uninstall an app, or you can drag the app to the trash to uninstall it.

FCC compliance statement

This device complies with Part 15 of the FCC Rules. Operation is subject to the following two conditions: (1) this device may not cause harmful interference, and (2) this device must accept any interference received, including interference that may cause undesired operation.

Note: This equipment has been tested and found to comply with the limits for a Class B digital device, pursuant to part 15 of the FCC Rules. These limits are designed to provide reasonable protection against harmful interference in a residential installation. This equipment generates, uses and can radiate radio frequency energy and, if not installed and used in accordance with the instructions, may cause harmful interference to radio communications. However, there is no guarantee that interference will not occur in a particular installation. If this equipment does cause harmful interference to radio or television reception, which can be determined by turning the equipment off and on, the user is encouraged to try to correct the interference by one or more of the following measures:

- Reorient or relocate the receiving antenna.
- Increase the separation between the equipment and receiver.
- Connect the equipment into an outlet on a circuit different from that to which the receiver is connected.
- Consult the dealer or an experienced radio/TV technician for help.

Caution: The user is cautioned that changes or modifications not expressly approved by the party responsible for compliance could void the user's authority to operate the equipment.

ISED Canada compliance statements

This device complies with ISED Canada licence-exempt RSS standard(s). Operation is subject to the following two conditions: (1) this device may not cause interference, and (2) this device must accept any interference, including interference that may cause undesired operation of the device.

The device for operation in the band 5150-5250 MHz is only for indoor use to reduce the potential for harmful interference to co-channel mobile satellite systems.

- This Class B digital apparatus complies with Canadian ICES-003.

EU regulatory conformance

Hereby, Shanghai Sunmi Technology Co., Ltd. declares that this device is in compliance with the essential requirements and other relevant provisions of Radio Equipment Directive 2014/53/EU. The full text of the EU declaration of conformity is available at the following internet address:

<https://developer.sunmi.com/docs/read/en-US/maaeghjk480>

UK PSTI SoC Website: <https://developer.sunmi.com/docs/read/en-US/xcdagghjk480>

INFORMATION ABOUT THE SOFTWARE

The description of accessories and components, including software, which allow the radio equipment to operate as intended, can be obtained in the full text of the EU declaration of conformity at the following internet address:

<https://developer.sunmi.com/docs/read/en-US/maaeghjk480>.


RESTRICTIONS OF USE

This product may be used in the following European member states subject to the following restrictions. For products that operate in the frequency band 5.150 to 5.350 GHz, wireless access systems (WAS), including radio local area networks (RLANs), shall be restricted to indoor use.

 EU Representative :SUNMI France SAS 186,avenue Thiers,69006 Lyon,France



This symbol means that it is forbidden to dispose the product of with normal household waste. At the end of the product life cycle, waste equipment should be taken to designated collection points, returned to the distributor when purchasing a new product, or contact your local authority representative for detailed information on WEEE recycling.

AT	BE	BG	HR	CY	CZ	DK	
EE	FI	FR	DE	EL	HU	IE	
IT	LV	LT	LU	MT	NL	PL	
PT	RO	SK	SI	ES	SE	UK(NI)	
IS	LI	NO	CH	TR			

RF Exposure Statement (SAR)

- This equipment complies with EU, FCC and IC RSS-102 radiation exposure limits set forth for an uncontrolled environment.
- This equipment should be installed and operated with minimum distance 20cm between the radiator & your body.
- Lors de l'installation et de l'utilisation de cet appareil, la distance entre le radiateur et le corps doit être d'au moins 20 cm.

Energy Start® certification

The device will be automatically switched in 5 mins display sleep(default) in 30mins device sleep(default)if there is no any operation.

The time of auto screen off can be change in the setting menu

Auto screen off (default 5mins) and auto sleep(30mins)have been selected for compliance with ENERGY STAR®, And are recommended by the ENERGY STAR® program for optimal energy savings

Mode	Frequency Range	9.86
BT	2402-2480MHz(TX/RX)	Power for EU(dBm)
BLE	2402-2480MHz(TX/RX)	7.34
2.4G Wi-Fi	2412-2472MHz(TX/RX)	17.18
5G Wi-Fi	5150-5250MHz(TX/RX) 5250-5350MHz(TX/RX) 5470-5725MHz(TX/RX) 5725-5850MHz(TX/RX)	16.40 17.46 18.39 13.33
NFC	13.56MHz(TX/RX)	27.15dBuV/m@10m

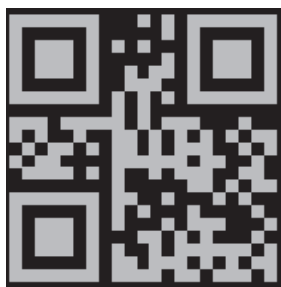
Manufacturer: Shanghai Sunmi Technology Co., Ltd.

Address:Room 505,No.388,Song Hu Road,Yang Pu District,Shanghai,China



<https://www.sunmi.com>

Scan to know more



M05054469

Documents / Resources

The logo for the Sunmi T3 Smart Desktop Terminal, featuring the text 'T3' in a stylized font next to a graphic of a terminal screen.	<p>Sunmi T3 Smart Desktop Terminal [pdf] User Manual 2AH25T3, 2AH25T3, M05054469, T3 Smart Desktop Terminal, T3, Smart Desktop Terminal, Desktop Terminal, Terminal</p>
--------------------------------------------------------------------------------------------------------------------------------------	---------------------------------------------------------------------------------------------------------------------------------------------------------------------------------------------

References

- [SUNMI - BloT for Business 4.0](#)
- developer.sunmi.com/docs/read/en-US/maaeghjk480
- developer.sunmi.com/docs/read/en-US/xcdagghjk480
- [User Manual](#)

Manuals+. Privacy Policy

This website is an independent publication and is neither affiliated with nor endorsed by any of the trademark owners. The "Bluetooth®" word mark and logos are registered trademarks owned by Bluetooth SIG, Inc. The "Wi-Fi®" word mark and logos are registered trademarks owned by the Wi-Fi Alliance. Any use of these marks on this website does not imply any affiliation with or endorsement.