



# Sunmi T3 PRO Smart Desktop Terminal User Manual

[Home](#) » [SUnmi](#) » Sunmi T3 PRO Smart Desktop Terminal User Manual 

## Contents

- 1 [Sunmi T3 PRO Smart Desktop Terminal](#)
- 2 [Product Specifications](#)
- 3 [Product Usage Instructions](#)
- 4 [OVERVIEW](#)
- 5 [Power On](#)
- 6 [Network settings](#)
- 7 [Connect a Customer Display](#)
- 8 [Optional Functions](#)
- 9 [Common Problems & Troubleshooting](#)
- 10 [Points for Attention](#)
- 11 [Important Safety Instructions](#)
- 12 [FCC compliance statement](#)
- 13 [Documents / Resources](#)
  - 13.1 [References](#)
- 14 [Related Posts](#)



**Sunmi T3 PRO Smart Desktop Terminal**



## Product Specifications

- **Model Number:** M05054418
- **Screen Size:** 15.6 inches
- **Resolution:** 1920×1080 pixels
- **Additional Display:** 10.1 inches with a resolution of 1200×600 pixels
- **Connectivity:** USB Type-C, Wi-Fi, NFC

## Product Usage Instructions

### App/Software Usage

Use the POS terminal to accept payments from customers in various retail settings.

### Follow these steps:

1. Connect the terminal to a network.
2. Open the App Store to download relevant applications.

- **Check App Details:** Go to Settings -> App and select the app name to view its details.
- **Uninstall Apps:** Go to Settings -> App -> Manage App to uninstall an app, or drag the app to the trash to remove it.

## FCC Compliance Statement

- This device complies with Part 15 of the FCC Rules. Ensure the device does not cause harmful interference and accepts any received interference.

**Caution:**

- Any changes or modifications not approved may void the user's authority to operate the equipment.

**ISED Canada Compliance Statements:**

- This device complies with ISED Canada license-exempt RSS standard(s). It must not cause interference and should accept any interference that may affect its operation.

**EU Regulatory Conformance:**

- The device conforms to the basic recommendations and measures outlined in the 2014/30/EU and 2014/35/EU directives.

**FAQ:**

**Q: What should I do if there is interference in my living environment?**

**A:** If you experience interference, take feasible measures to address it.

**Q: How can I uninstall apps on the device?**

**A:** Go to Settings -> App -> Manage App to uninstall an app, or drag the app to the trash.

**OVERVIEW**



**15.6"**  
1920x1080px



**15.6"**  
1920x1080px

+

**10.1"**  
1200x600px



**15.6"**  
1920x1080px

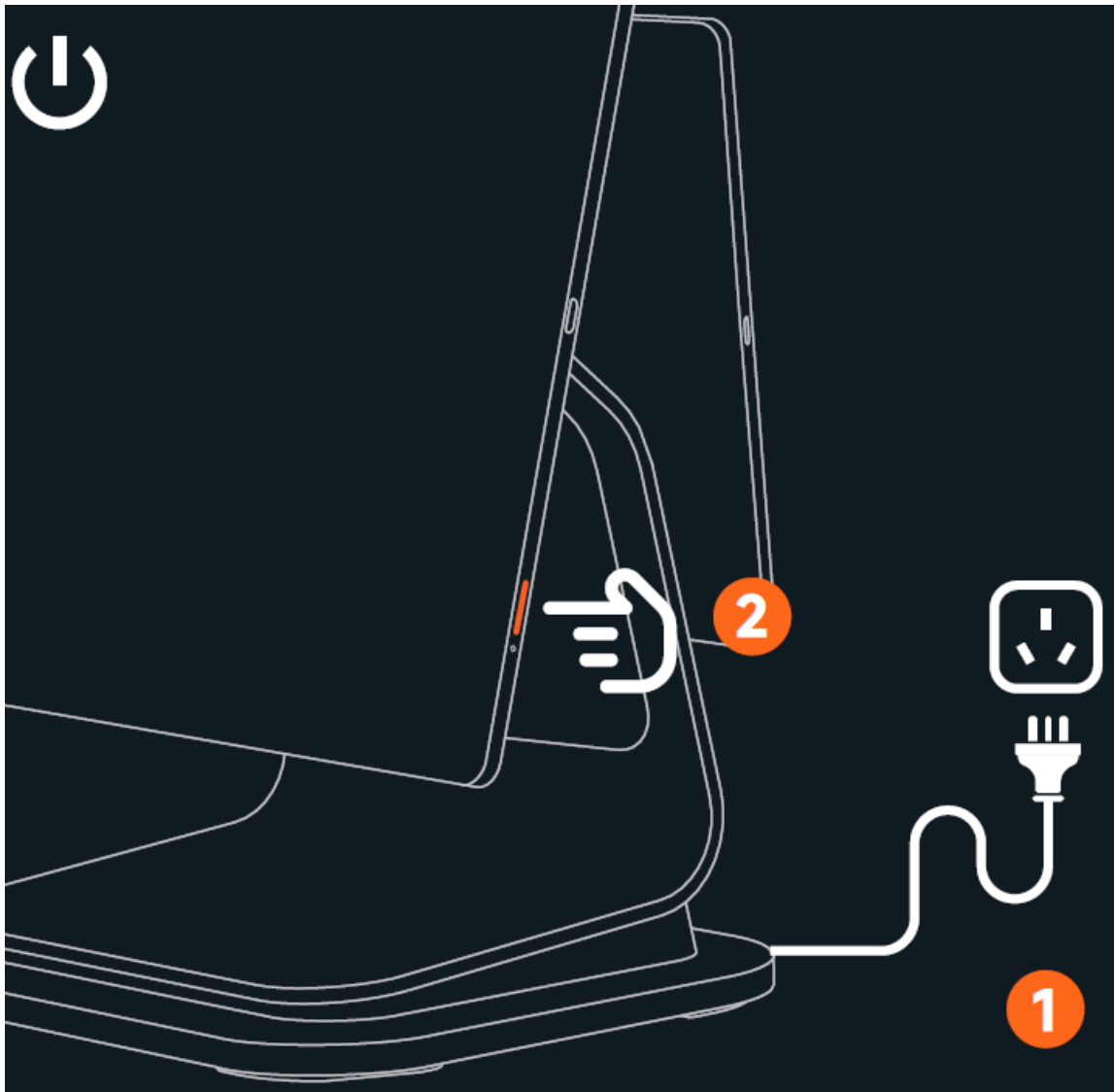
+

**15.6"**  
1920x1080px

Power On



Power On



### 1. Connect to the power supply

- Plug the power adapter into the power port at the bottom of the terminal. Connect the other end of the adapter to the AC power socket.

### 2. Press the power button to turn on the screen and enter into the boot interface, then you can operate under the guidance.

- Press the button to boot up the device when it is off.
- Press and hold the button for 2-3 seconds to power off or reboot the device when it is on.
- Press and hold the button for 11 seconds to power off the device when it crashes.

## Network settings



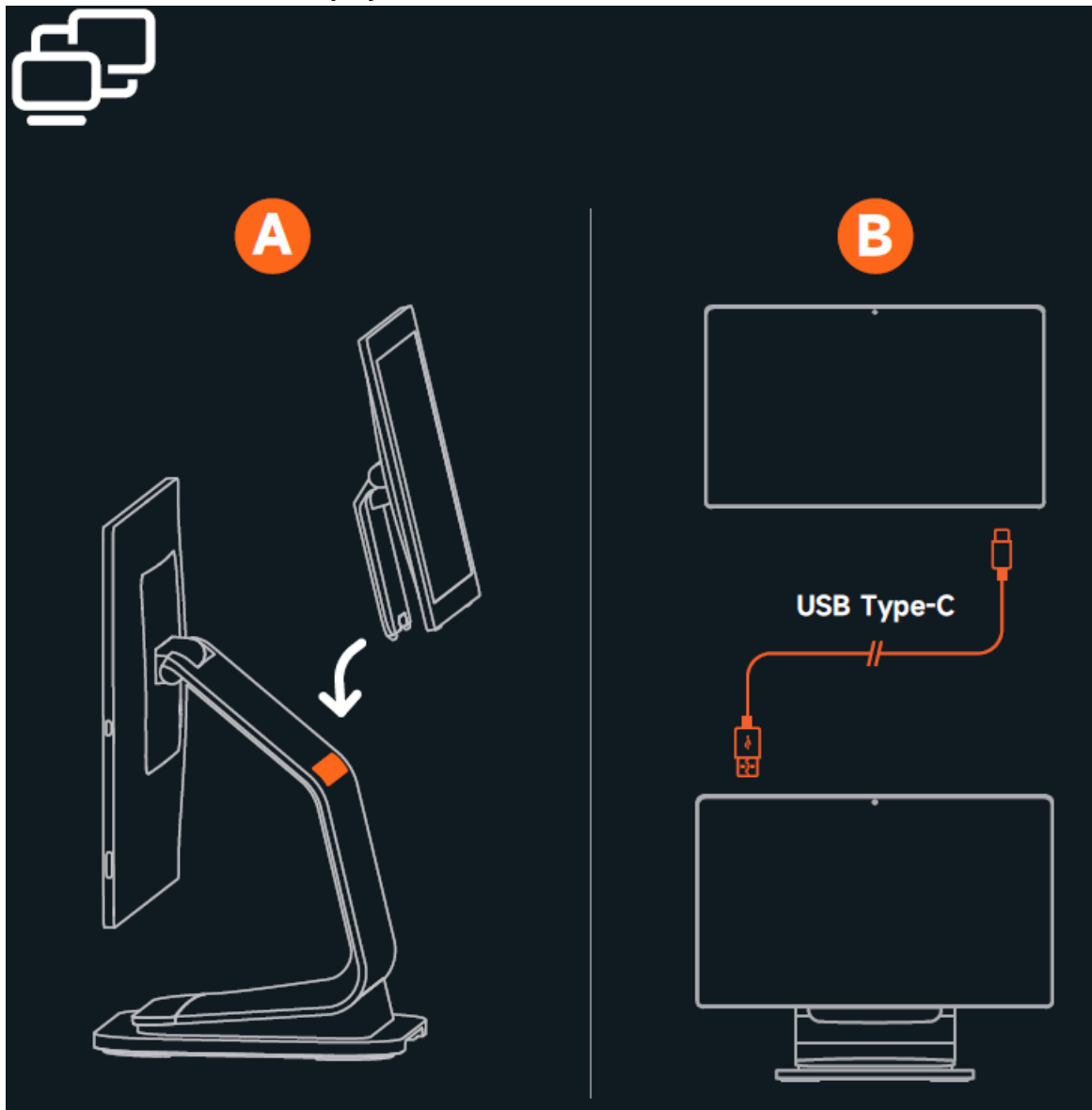
### Wi-Fi setting

- Click the “Setting” button, and then enable WLAN, enter the WLAN search interface to wait for its searching and listing available WLAN hotspots;
- Click WLAN to be connected. If an encrypted network is selected, you are required to enter the access password to get connected.

## Connect a Customer Display



### Connect a Customer Display

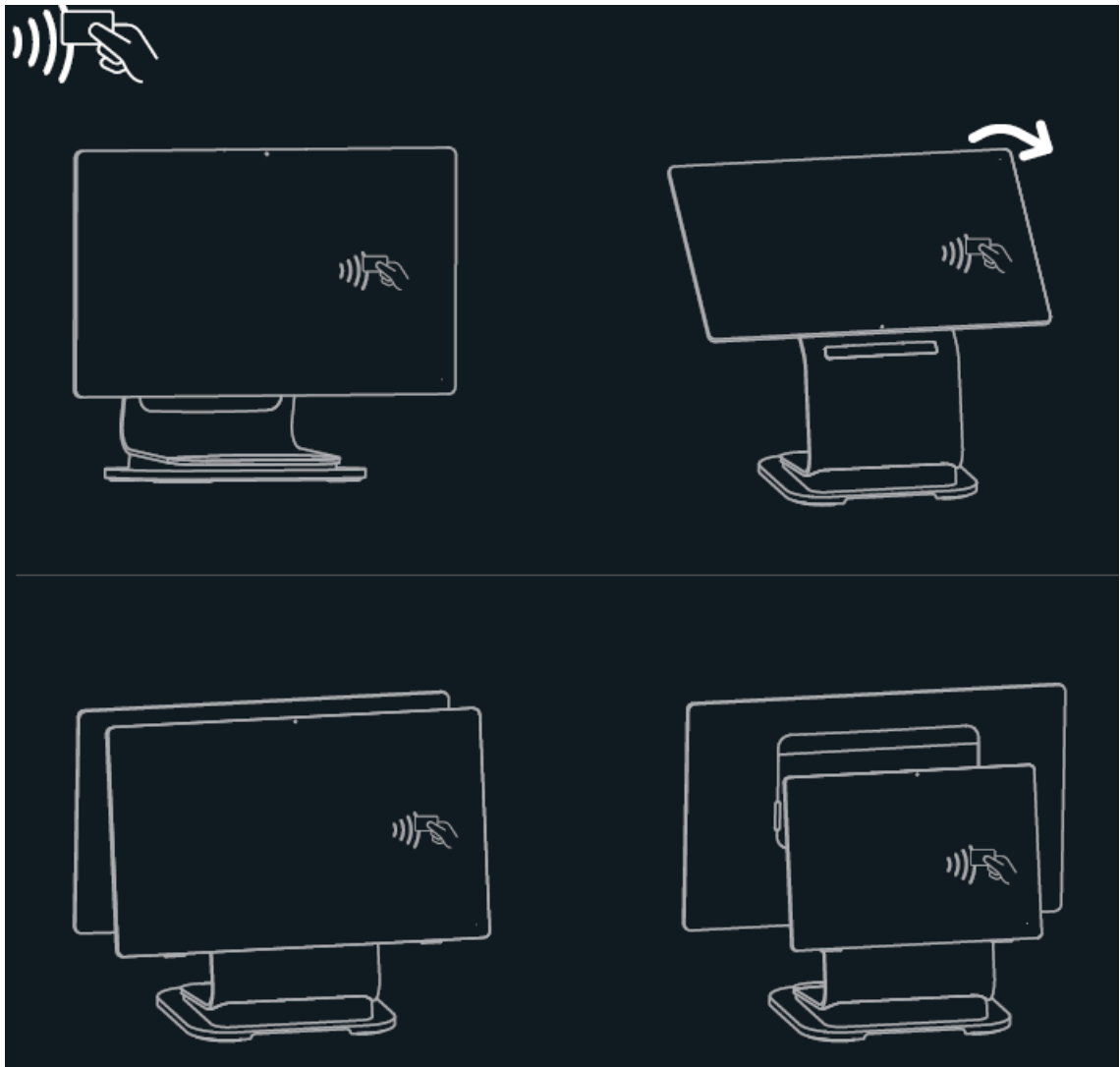


- **A.** Connect with a USB Type-C cable.
- **B.** Insert the display according to the direction shown.



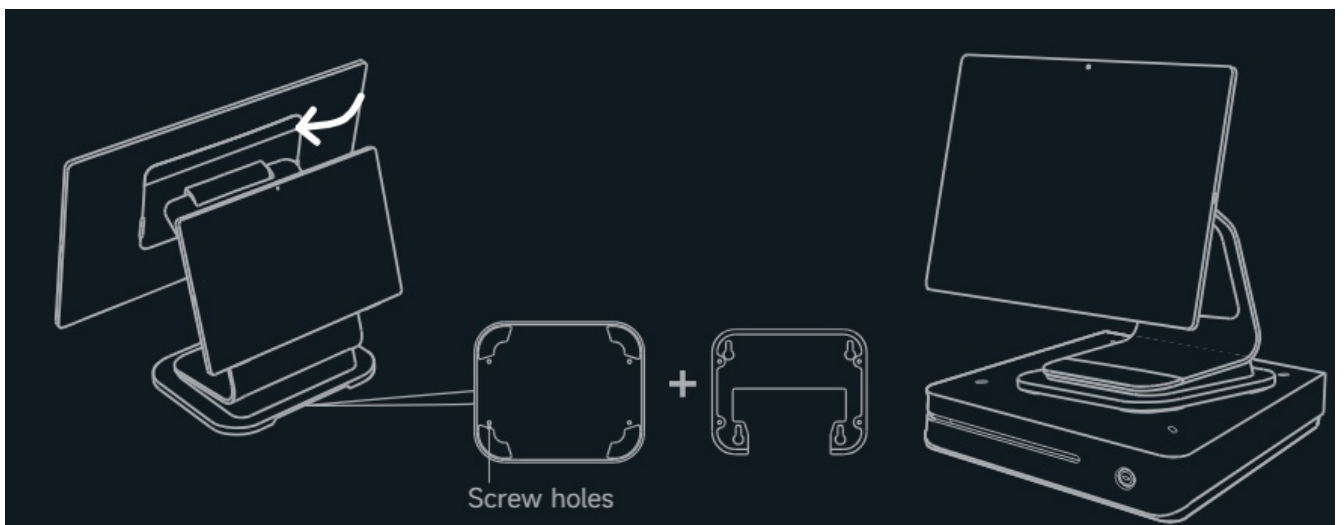
NFC

- Main display right side
- Main display right side (rotated)
- 15.6" customer display right side (optional)
- 10.1" customer display right side (optional)



## Optional Functions

- TF card slot / SIM card slot (under the cover trim)
- The base screw holes are used to fix the cash drawer.



## Common Problems & Troubleshooting

Problems	Solutions
<b>Device crashes</b>	<ul style="list-style-type: none"> <li>· Long press the power button for 11 seconds to power off the device, and then short press to reboot it.</li> </ul>
<b>Printer can't work</b>	<ul style="list-style-type: none"> <li>· Check if the paper container cover is closed correctly;</li> <li>· Check if there is a paper jam.</li> </ul>
<b>The printed paper is blank</b>	<ul style="list-style-type: none"> <li>· Check if the paper roll is installed in the correct direction;</li> <li>· Check if the correct 80mm thermal paper roll is used.</li> </ul>
<b>Blurry printed content</b>	<ul style="list-style-type: none"> <li>· Check if the thermal print head is dirty. If yes, please use a cotton swab dampened with anhydrous alcohol to clean it;</li> <li>· Please change the thermal paper with a higher quality one to avoid blurry printed contents resulted from bad paper quality.</li> </ul>

## Points for Attention

### Safety Warning

- Please insert the AC plug into the AC socket corresponding to the input voltage of the power adapter;
- It is strictly forbidden to use it at a site with the existence of any potential explosive gas;
- Non-professionals are not allowed to tear down the power adapter to avoid dangers;
- This is a Class A product, which may cause radio interference in a living environment. Thus, the user may be required to carry out feasible measures against the interference.

### Important Safety Instructions

- Do not install or use the device during lightning storms to avoid the potential risks of lightning shock;
- When you have discovered an unusual odor, overheating, or smoke, please cut off the power supply at once!

### Suggestions

- Do not use it near water or in a humid environment to avoid fluid falling into the terminal;
- Do not use it in extreme cold or hot environments. For example: near an ignition source or a lighted cigarette;
- Do not drop, throw, or bend the device;
- Try your best to use it in a clean and dust-free environment, to prevent small items from dropping into the terminal;
- Do not use the device near medical facilities without permission.

### Declaration

- SUNMI will not assume responsibility for the results of the following actions.
- Damages caused by use and maintenance without complying with the conditions specified in this user guide;
- Damages or problems caused by using optional items or consumables that are not the initial products provided or approved by SUNMI;
- Modification or changing of the product without the permission of SUNMI is not allowed;



- The operating system of this product only supports official system updates. If the user uses a third-party ROM system to update the device or modifies the system files by cracking, it may lead to system instability and may bring safety risks and threats.

## **Disclaimer**

- Due to product updates, certain details of this document may be inconsistent with the product, and the real device shall prevail. SUNMI owns the interpretative right of this document and reserves the right to modify this user guide without prior notice.

## **App/Software**

- Use the POS terminal to accept payments from customers in supermarkets, shopping malls, department stores, convenience stores restaurants, etc.
- You can connect the terminal to a network and open the App Store to get relevant apps.
- How to check app details: select “Setting->App” and select the app name to check its details; How to uninstall apps: select “Setting->App->Manage App” to uninstall an app, or you can drag the app to the trash to uninstall it.

## **FCC compliance statement**

This device complies with Part 15 of the FCC Rules. Operation is subject to the following two conditions:

1. this device may not cause harmful interference,
2. this device must accept any interference received, including interference that may cause undesired operation.

**Note:** This equipment has been tested and found to comply with the limits for a Class B digital device, under part 15 of the FCC Rules. These limits are designed to provide reasonable protection against harmful interference in a residential installation. This equipment generates, uses, and can radiate radio frequency energy and, if not installed and used by the instructions, may cause harmful interference to radio communications. However, there is no guarantee that interference will not occur in a particular installation. If this equipment does cause harmful interference to radio or television reception, which can be determined by turning the equipment off and on, the user is encouraged to try to correct the interference by one or more of the following measures:

- Reorient or relocate the receiving antenna.
- Increase the separation between the equipment and the receiver.
- Connect the equipment to an outlet on a circuit different from that to which the receiver is connected.
- Consult the dealer or an experienced radio/TV technician for help.

**Caution:** The user is cautioned that changes or modifications not expressly approved by the party responsible for compliance could void the user’s authority to operate the equipment.

Operation of the transmitter in the 5925-7125MHz band is prohibited for control of or communications with unmanned aircraft systems and is restricted to indoor usage only.

Operation of the device is prohibited on oil platforms, cars, trains, boats, and aircraft except that operation of this device is permitted in large aircraft while flying above 10,000 feet.

## **RF Soft restrictions for UNII 5/6/7/8**

The device will only associate and connect with a low-power indoor access point or subordinate device and never directly connect to other client devices.

This device will always initiate transmission under the control of a low-power indoor AP or subordinate except for brief transmissions before joining a network.

These short messages will only occur if the client has detected an indoor AP or subordinate operating on a channel. These brief messages will have a time-out mechanism such that if it does not receive a response from an AP it will not continually repeat the request.

Transmissions will be lower or equal to the power advertised by the indoor low-power access point or subordinate and never above the maximum output power allowed by the FCC grant for equipment class 6XD.

## **ISED Canada compliance statements**

This device complies with ISED Canada license-exempt RSS standard(s). Operation is subject to the following two conditions:

1. this device may not cause interference,
2. this device must accept any interference, including interference that may cause undesired operation of the device.

Operations in the 5.15-5.25GHz band are restricted to indoor usage only.

## **Statements for UNII 5/6/7/8**

Operation of the transmitter in the 5925-7125MHz band is prohibited for control of or communications with unmanned aircraft systems and is restricted to indoor usage only. This device will automatically stop transmitting if there is an absence of information to transmit or an operational failure. The device will only associate and connect with a low-power indoor access point or subordinate device and never directly connect to another standard client device or low-power client device. This device will always initiate transmission under the control of a low-power indoor AP or subordinate except for brief transmissions before joining a network. These short messages will only occur if the client has detected an indoor AP or subordinate operating on a channel. These brief messages will have a time-out mechanism such that if it does not receive a response from an AP it will not continually repeat the request.

## **EU regulatory conformance**

Hereby, Shanghai Sunmi Technology Co., Ltd. declares that This device complies with the basic recommendations and other relevant measures in the 2014/30/EU and 2014/35/EU directives. The full text of the EU Declaration of Conformity is available at the following internet address: <https://developer.sunmi.com/docs/read/en-US/maaeghjk480>.

## **INFORMATION ABOUT THE SOFTWARE**

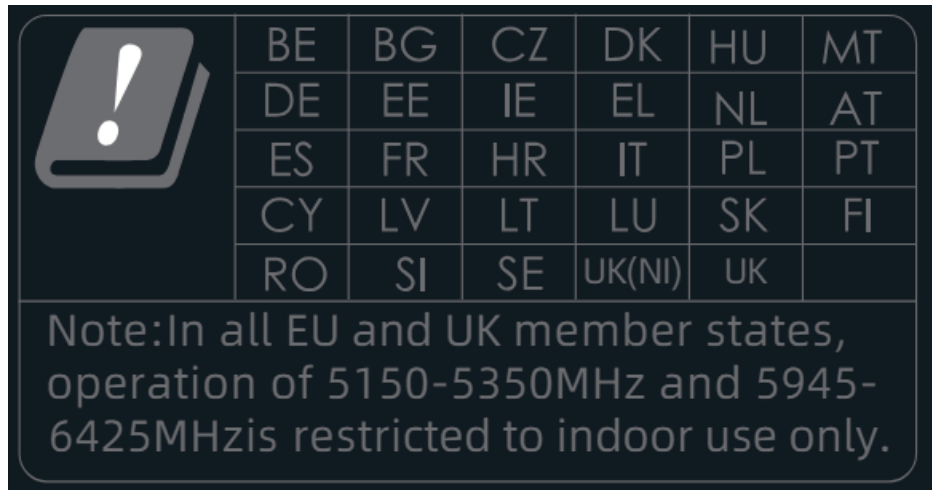
The description of accessories and components, including software, which allows the radio equipment to operate as intended, can be obtained in the full text of the EU declaration of conformity at the following internet address:

<https://developer.sunmi.com/docs/read/en-US/maaeghjk480>.

## **RESTRICTIONS OF USE**

This product may be used in the following European member states subject to the following restrictions. For products that operate in the frequency band 5.150 to 5.350 GHz and 5945-6425MHz, wireless access systems (WAS), including radio local area networks (RLANs), shall be restricted to indoor use.

This symbol means that it is forbidden to dispose the product of with normal household waste. At the end of the product life cycle, waste equipment should be taken to designated collection points, returned to the distributor when purchasing a new product, or contact your local authority representative for detailed information on WEEE recycling.



### RF Exposure Statement (SAR)

- This equipment complies with EU, FCC, and IC RSS-102 radiation exposure limits set forth for an uncontrolled environment.
- This equipment should be installed and operated with a minimum distance of 20cm between the radiator & your body.

### Energy Start® certification

The device will be automatically switched in a 5-minute display to sleep(default) and in 30mins the device sleep(default)if there is no operation. The time of auto screen off can be changed in the settings menu. Auto screen off (default 5mins) and auto sleep(30mins)have been selected for compliance with ENERGY STAR®, And are recommended by the ENERGY STAR® program for optimal energy savings.

Mode/Band	Frequency	Power dBm
BT	2402-2480MHz(TX/RX)	9.71
BLE	2402-2480MHz(TX/RX)	9.71
2.4G WLAN	2412-2472MHz(TX/RX)	19.89
5G WLAN	5150-5350MHz(TX/RX)	22.85
5G WLAN	5470-5725MHz(TX/RX)	22.54
5.8G WLAN	5725-5850MHz(TX/RX)	13.93
6E WLAN	5945-6425MHz(TX/RX)	17.87
NFC	13.56 MHz	2.415dBμA/m@3M

- **Manufacturer:** Shanghai Sunmi Technology Co., Ltd.
- **Address:** Room 505, No.388, Song Hu Road, Yang Pu District, Shanghai, China


Scan to learn more





- [www.sunmi.com](http://www.sunmi.com)
- 400-6666-509

---

## Documents / Resources

	<a href="#">Sunmi T3 PRO Smart Desktop Terminal</a> [pdf] User Manual T3 PRO Smart Desktop Terminal, T3 PRO, Smart Desktop Terminal, Desktop Terminal, Termina 
---	---

## References

-  [SUNMI - BloT for Business 4.0](#)
-  [developer.sunmi.com/docs/read/en-US/maaeghjk480](https://developer.sunmi.com/docs/read/en-US/maaeghjk480)
- [User Manual](#)

[Manuals+](#), [Privacy Policy](#)

This website is an independent publication and is neither affiliated with nor endorsed by any of the trademark owners. The "Bluetooth®" word mark and logos are registered trademarks owned by Bluetooth SIG, Inc. The "Wi-Fi®" word mark and logos are registered trademarks owned by the Wi-Fi Alliance. Any use of these marks on this website does not imply any affiliation with or endorsement.