



Sunmi F4E02 Self Checkout Kiosk User Guide

[Home](#) » [Sunmi](#) » Sunmi F4E02 Self Checkout Kiosk User Guide 

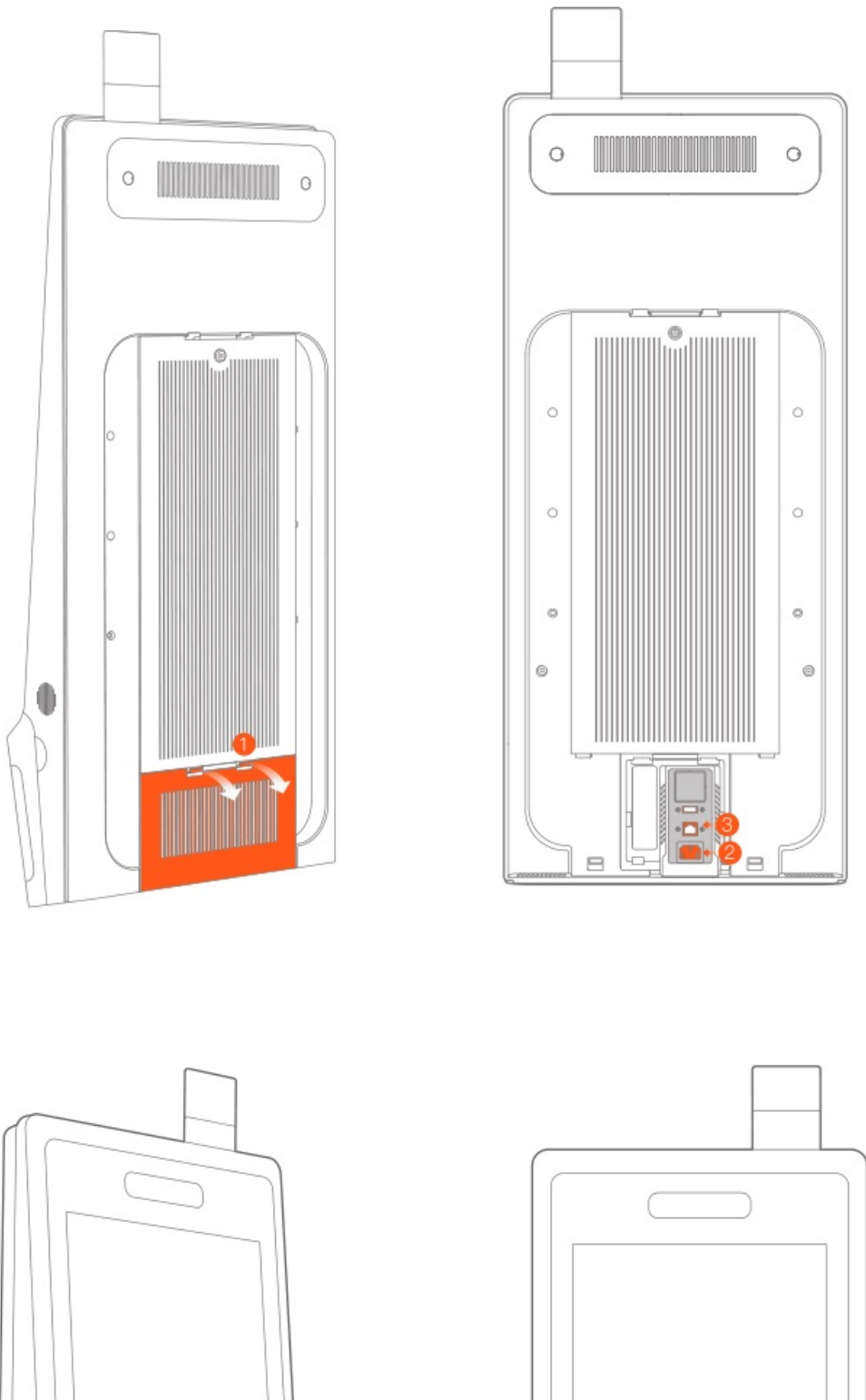
Sunmi F4E02 Self Checkout Kiosk User Guide

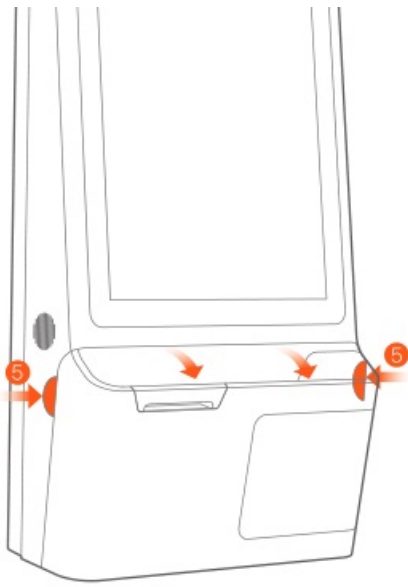


Contents

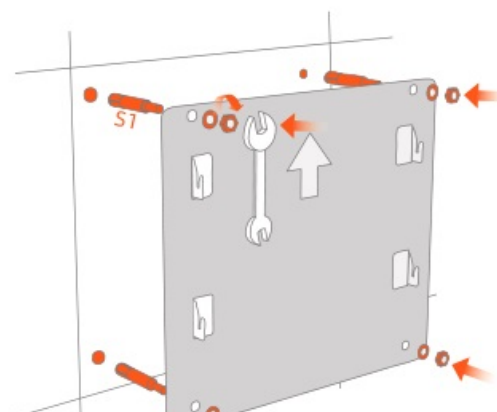
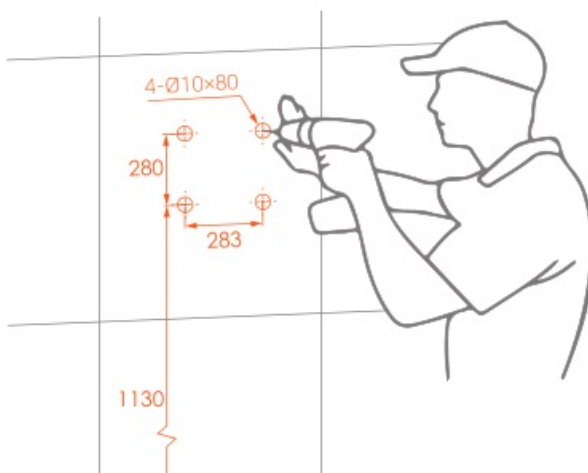
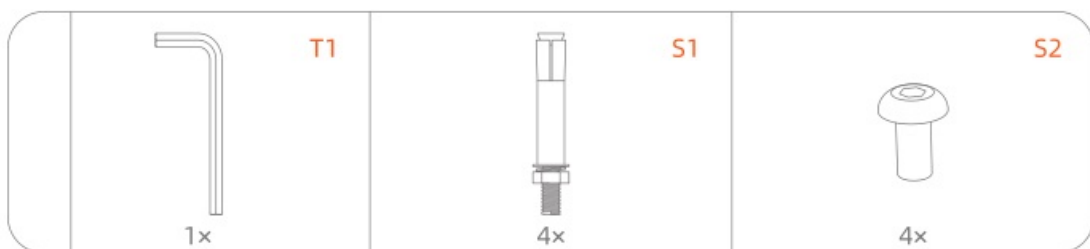
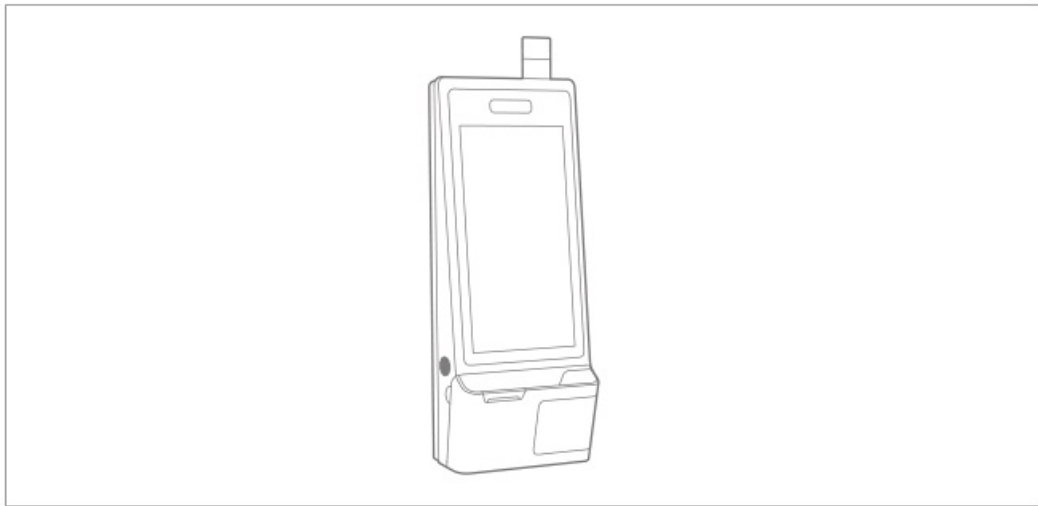
- 1 Quick Start Guide
- 2 Quick Setting
- 3 Paper Changing Steps for the Inside Printer
- 4 Brief Introduction of Self-Service Kiosk
- 5 Points for Attention
- 6 Table for Names and Content Identification of Toxic and Hazardous Substances in this Product
- 7 Documents / Resources
 - 7.1 References

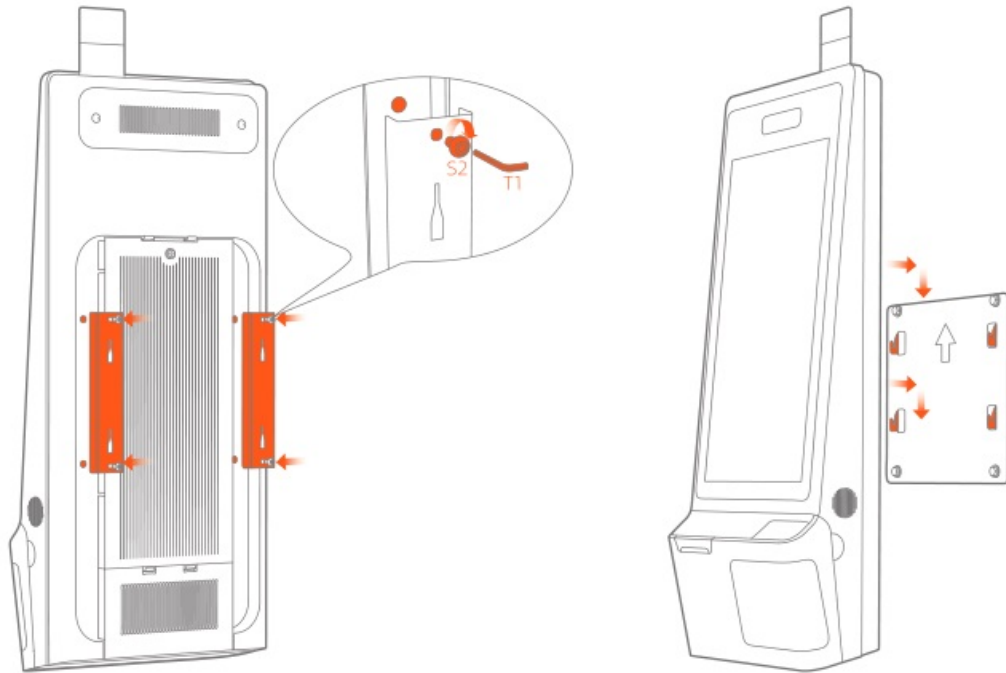
Quick Start Guide





Installation style





<http://weixin.qq.com/r/3Cg5lUnETRQyrQ1C933O>

Quick Setting

Only several steps to enable the smart commercial device K2:

After turning on the complete machine power supply, the screen will be lit. Then you will enter the first boot interface and just simply operate according to the instructions.

There are two types of internet mode available for you.

LAN setting


After plugging the network cable correctly, click "Setting" and "Wired Network" to choose Enable. Access password is required for an encrypted network connection. As for IP address, there are two options: to automatically obtain IP or to manually enter IP address.


Wi-Fi setting

Click "Setting" and "WLAN" to enter the WLAN search interface. Wait for the available WLAN hot spots searching and listing. Click the right WLAN to connect to the network. Access password is required for an encrypted network connection.

How to download/use App

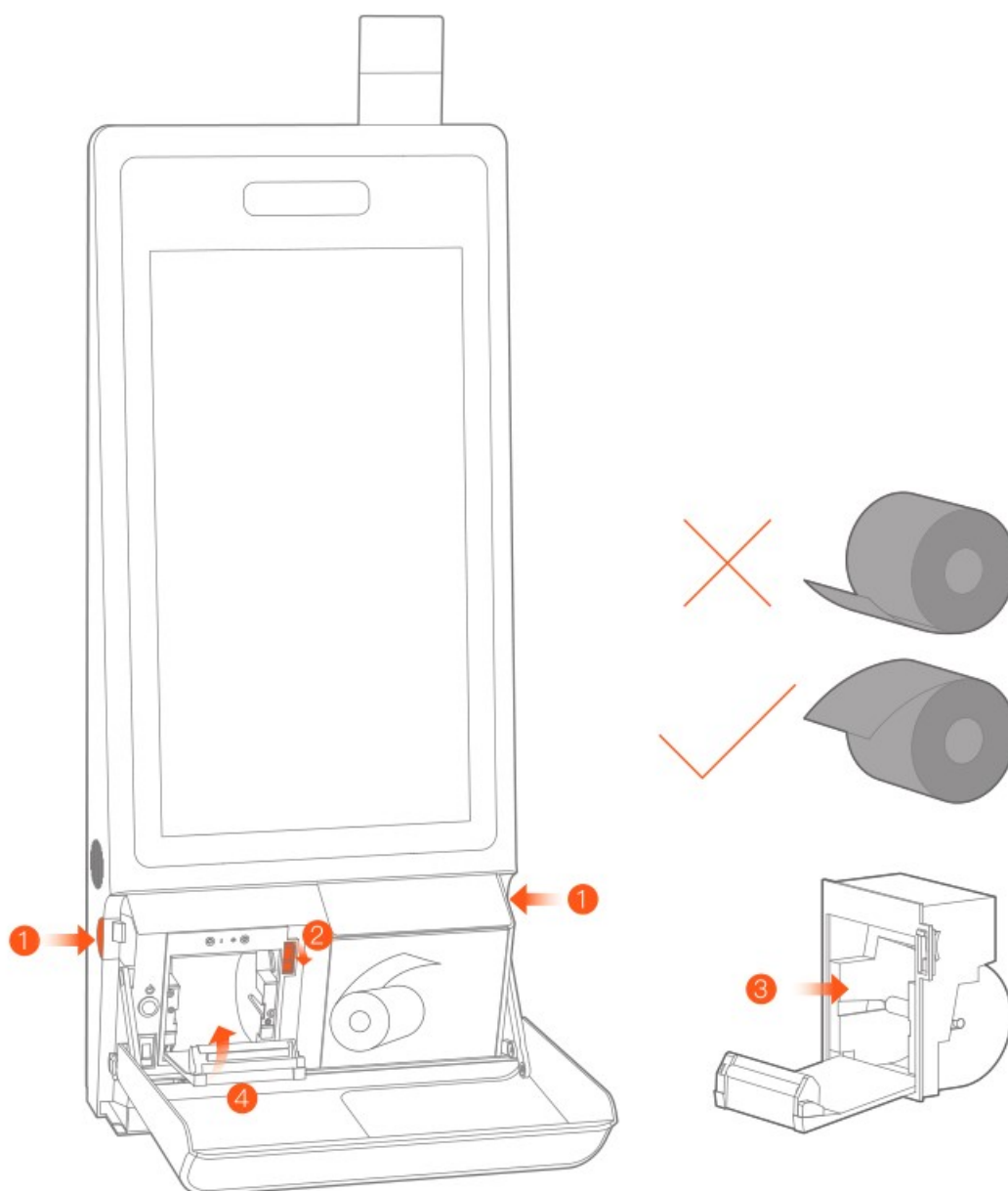
The Self-service Kiosk is applicable for the cashier environment of commercial customers in various industries, such as Chinese and Western catering, high-end department stores, supermarkets, convenience stores, information sites, interactive multi-media, scenic spot, etc. Please turn on the Kiosk and search & download the relevant Apps on the App market on Internet.

 Facebook : Sunmitech

 LinkedIn : SUNMI Technology

Please read the internal machine help App for more help or call 400-6666-509 for free telephone services.

Paper Changing Steps for the Inside Printer



1. Open flip panel

Press the buttons on both side of the host at the same time to open the flip panel.

2. Open paper storage cover

Toggle downward the printer driving lever to open the paper storage cover.

3. Put in paper

Put in the 80mm thermal sensitive paper with a roller in it and pull out a section outside the printer exit.

4. Close the paper storage cover and flip panel

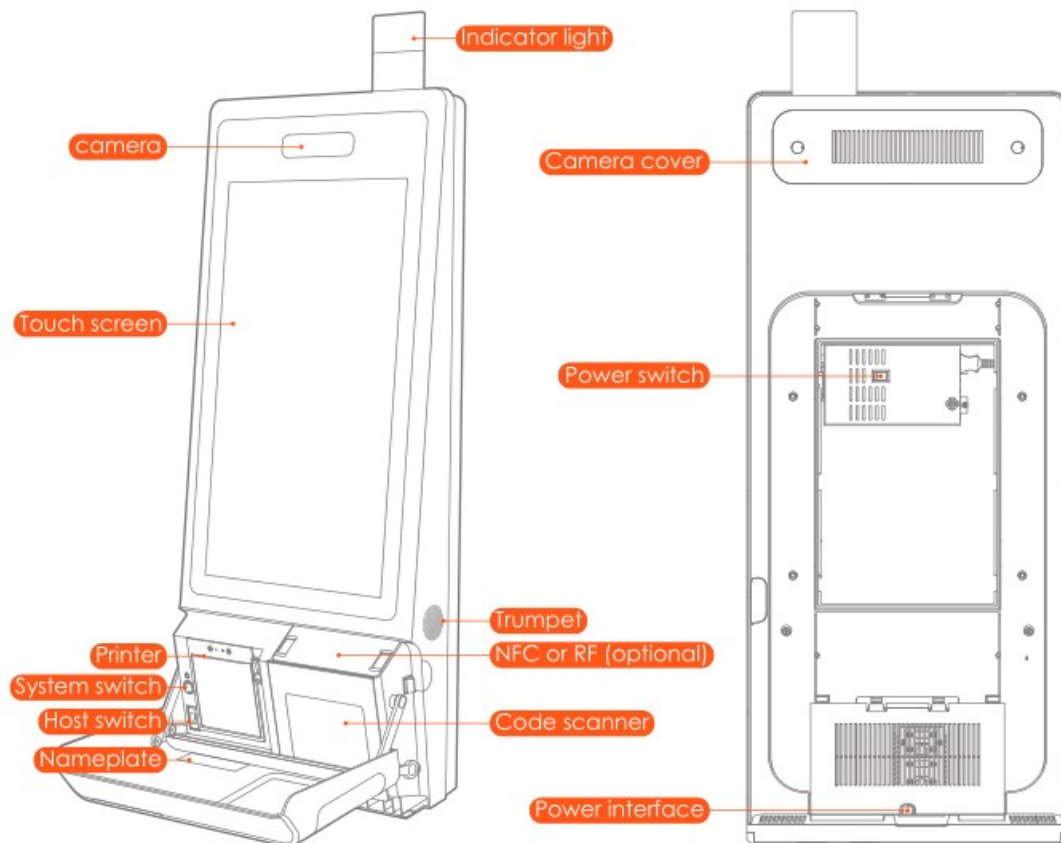
Press both sides of the paper storage cover to close it.

The printer will automatically cut paper in power on state.

In power off state, it is necessary to manually tear off excessive paper;

Close the flip panel.

Brief Introduction of Self-Service Kiosk



Camera (optional facial recognition)

Camera used to shooting.

Touch screen

Touchable screen applied for customer usage.

Printer

Used to print receipt.

System switch

In standby state, short press to boot, short press again to be in standby mode;

In service state, long press for 2 to 3 seconds to choose to shut-down or restart;

In the state of power-on, long press for 11 seconds to shut down the host.

Host switch

Used to control the host power supply.

Camera cover

Used to cover the face camera inside the host.

NFC or RF (optional)

Used for NFC payment or RF quick pass.

Code scanner

Used to read codes.

Power interface

Used to plug the power line.

Points for Attention**Safety Warning**

- Please insert the AC plug into the AC socket corresponding to the input voltage of the power adapter;
- It is strictly forbidden to use it at a site with the existence of any potential explosive gas;
- Operating temperature: 0°C ~ 40°C, Storage temperature: -20°C ~ 60°C.
- To avoid injury, unauthorized persons shall not open the power adapter;
- Only suitable for safe use at altitudes up to 5000 meters

Declaration

SUNMI will not assume responsibilities for the results of the following actions:

- Damages caused by use and maintenance without complying with the conditions specified in this user guide;
- Damages or problems caused by using optional items or consumables that are not the initial products provided or approved by SUNMI;
- Modification or changing of the product without the permission of SUNMI is not allowed;
- The operating system of this product only supports official system updates. If the user uses a third party ROM system to update the device or modifies the system files by cracking, it may lead to system instability and may bring safety risks and threats.

Important Safety Instructions

- Do not install or use the device during lightning storms to avoid the potential risks of lightning shock;
- When you have discovered unusual odor, overheat or smoke, please cut off the power supply at once!

Disclaimer

Due to product update, certain details of this document may be inconsistent with the product, and the real device shall prevail. SUNMI owns the interpretative right of this document, and reserves the right to modify this user guide without prior notice.

Suggestions

- Do not use it near water or in humid environment to avoid fluid to fall into the terminal;
- I Do not use it in extreme cold or hot environment. For example: near an ignition source or a lighted cigarette;
- Do not drop, throw or bend the device;
- Try best to use it in a clean and dust-free environment, to prevent small items from dropping into the terminal;
- Do not use the device near medical facilities without permission.

App/Software

Use the POS terminal to accept payments from customers in supermarkets, shopping malls, department stores, convenience stores or restaurants, etc. You can connect the terminal to a network and open the App Store to get relevant apps.

How to check app details: select "Setting->App" and select the app name to check its details;

How to uninstall apps: select "Setting->App->Manage App" to uninstall an app, or you can drag the app to the trash to uninstall it.

FCC compliance statement

This device complies with Part 15 of the FCC Rules. Operation is subject to the following two conditions: (1) this device may not cause harmful interference, and (2) this device must accept any interference received, including interference that may cause undesired operation.

Note: This equipment has been tested and found to comply with the limits for a Class B digital device, pursuant to part 15 of the FCC Rules. These limits are designed to provide reasonable protection against harmful interference in a residential installation. This equipment generates, uses and can radiate radio frequency energy and, if not installed and used in accordance with the instructions, may cause harmful interference to radio communications. However, there is no guarantee that interference will not occur in a particular installation. If this equipment does cause harmful interference to radio or television reception, which can be determined by turning the equipment off and on, the user is encouraged to try to correct the interference by one or more of the following measures:

- Reorient or relocate the receiving antenna.
- Increase the separation between the equipment and receiver.
- Connect the equipment into an outlet on a circuit different from that to which the receiver is connected.
- Consult the dealer or an experienced radio/TV technician for help.

Caution: The user is cautioned that changes or modifications not expressly approved by the party responsible for compliance could void the user's authority to operate the equipment.

ISED Canada compliance statements

This device complies with ISED Canada licence-exempt RSS standard(s). Operation is subject to the following two conditions: (1) this device may not cause interference, and (2) this device must accept any interference, including interference that may cause undesired operation of the device. The device for operation in the band 5150-5250 MHz is only for indoor use to reduce the potential for harmful interference to co-channel mobile satellite systems.

– This Class B digital apparatus complies with Canadian ICES-003.

EU regulatory conformance

Hereby, Shanghai Sunmi Technology Co., Ltd. declares that this device is in compliance with the essential requirements and other relevant provisions of Radio Equipment Directive 2014/53/EU. The full text of the EU declaration of conformity is available at the following internet address:

INFORMATION ABOUT THE SOFTWARE

The description of accessories and components, including software, which allow the radio equipment to operate as intended, can be obtained in the full text of the EU declaration of conformity at the following internet address: <https://developer.sunmi.com/docs/read/en-US/maaeghjk480>.

RESTRICTIONS OF USE

This product may be used in the following European member states subject to the following restrictions. For products that operate in the frequency band 5150-5350 MHz & 5945-6425 MHz wireless access systems (WAS), including radio local area networks (RLANs), shall be restricted to indoor use.

AT	BE	BG	HR	CY	CZ	DK
EE	FI	FR	DE	EL	HU	IE
IT	LV	LT	LU	MT	NL	PL
PT	RO	SK	SI	ES	SE	UK(NI)
IS	LI	NO	CH	TR		

Note: In all EU and UK member states, operation of 5150-5350MHz & 5945-6425MHz restricted to indoor use only.

Transmitters in the 5.925-7.125 GHz band are prohibited from operating to control or communicate with unmanned aircraft systems.

Devices shall not be used for control of or communications with unmanned aircraft systems.



EU Representative :SUNMI France SAS 186,avenue Thiers,69006 Lyon,France

UK PSTI SoC Website: <https://developer.sunmi.com/docs/read/en-US/xcdaeghjk480>



This symbol means that it is forbidden to dispose the product of with normal household waste. At the end of the product life cycle, waste equipment should be taken to designated collection points, returned to the distributor when purchasing a new product, or contact your local authority representative for detailed information on WEEE recycling.

Mode	Frequency	Power (dBm)
BT	2402-2480MHz(TX/RX)	9.78
BLE	2402-2480MHz(TX/RX)	7.02
2.4G	Wi-Fi 2412-2472MHz(TX/RX)	17.13
5G	Wi-Fi 5150-5250MHz(TX/RX)	17.22
	5250-5350MHz(TX/RX)	17.58
	5470-5725MHz(TX/RX)	18.86
	5725-5850MHz(TX/RX)	13.89
6G	Wi-Fi 5945-6425MHz(TX/RX)	17.38
NFC	13.56MHz(TX/RX)	6.40dBuA/m@10m

RF Exposure Statement (SAR)

- This equipment complies with EU, FCC and IC RSS-102 radiation exposure limits set forth for an uncontrolled environment.
- This equipment should be installed and operated with minimum distance 20cm between the radiator & your body.

Battery

- Do not ingest battery. Chemical burn hazard!
- This product contains a coin/button cell battery. If the coin/button cell battery is swallowed, it can cause severe internal burns in just 2 hours and can lead to death.
- Keep new and used batteries away from children.
- If you think batteries might have been swallowed or placed inside any part of the body, seek immediate medical attention.

CAUTION: Risk of explosion if the battery is replaced by an incorrect type.

Improper replacement of the battery with an incorrect type may defeat a safeguard (for example, in the case of some lithium battery types).

- Do not dispose of the battery into fire or a hot oven, or mechanically crush or cut the battery, which may result in an explosion.
- Do not leave the battery in an extremely high temperature surrounding environment, which may result in an explosion or the leakage of flammable liquid or gas.
- Do not subject the battery to extremely low air pressure, which may result in an explosion or the leakage of flammable liquid or gas.
- Dispose of used batteries according to the instructions.

Table for Names and Content Identification of Toxic and Hazardous Substances in this Product

Part Name	Toxic or Hazardous Substances and Elements									
	Pb	Hg	Cd	Cr(VI)	PBB	PBDE	DEHP	DBP	BBP	DIBP
Circuit Board Component	×	○	○	○	○	○	○	○	○	○
Structural Component	○	○	○	○	○	○	○	○	○	○
Packaging Component	○	○	○	○	○	○	○	○	○	○

○ : indicates that the content of the toxic and hazardous substance in all homogeneous materials of the component is below the limit specified in SJ/T 11363-2006.

× : indicates that the content of the toxic and hazardous substance in at least one homogeneous material of the component exceeds the limit stipulated in SJ/T 11363-2006. However, as for the reason, because there is no mature and replaceable technology in the industry at present.

The products that have reached or exceeded environmental protection service life should be recycled and reused

according to the Regulations on Control and Management of Electronic Information Products, and should not be discarded randomly.

Product warranty card

Product Name: _____
Product model: _____
Product No.: _____
Date of purchase: _____
Warranty period: from the date of purchase, our company provides _____ day warranty service.
Contact information:
· Company address: _____
· Contact number: _____

Free warranty is not available for:

- Dismantle and repair the product without permission.
- The bar code and fragile stickers of the product are damaged, and the warranty card is altered or incomplete.
- Failure to operate the equipment in accordance with the instructions.
- Artificial damage caused by failure, scratch or damage due to water inflow or falling.
- Failure or damage caused by force majeure.
- Beyond the warranty period.

Product
certificate
Inspection Qualified

Manufacture: Shanghai SUNMI Technology Co.,Ltd.
Address: Room 505, No.388 Song Hu Road, Yang Pu District, Shanghai, China
Mail: contactus@sunmi.com
Phone: 400-6666-509

Documents / Resources



[Sunmi F4E02 Self Checkout Kiosk \[pdf\] User Guide](#)
F4E02, F4E02 Self Checkout Kiosk, Self Checkout Kiosk, Checkout Kiosk, Kiosk

References

- developer.sunmi.com/docs/read/en-US/maaegh-
- developer.sunmi.com/docs/read/en-US/xcdagghjk480
- [User Manual](#)

Manuals, Privacy Policy

This website is an independent publication and is neither affiliated with nor endorsed by any of the trademark owners. The "Bluetooth®" word mark and logos are registered trademarks owned by Bluetooth SIG, Inc. The "Wi-Fi®" word mark and logos are registered trademarks owned by the Wi-Fi Alliance. Any use of these marks on this website does not imply any affiliation with or endorsement.