



# sunmi F4E00 Self Checkout Kiosk User Guide

[Home](#) » [SUnmi](#) » [sunmi F4E00 Self Checkout Kiosk User Guide](#) 

## Contents

- 1 [sunmi F4E00 Self Checkout Kiosk](#)
- 2 [Product Information](#)
- 3 [Four installation styles](#)
- 4 [Product Usage Instructions](#)
- 5 [Wi-Fi Setting](#)
- 6 [How to Download/Use App](#)
- 7 [Paper Changing Steps for the Inside Printer](#)
- 8 [Brief Introduction of Self-Service Kiosk](#)
- 9 [Package packing List of K2 Host](#)
- 10 [FCC compliance statement](#)
- 11 [Points for Attention](#)
- 12 [FAQ](#)
- 13 [Documents / Resources](#)
  - 13.1 [References](#)
- 14 [Related Posts](#)

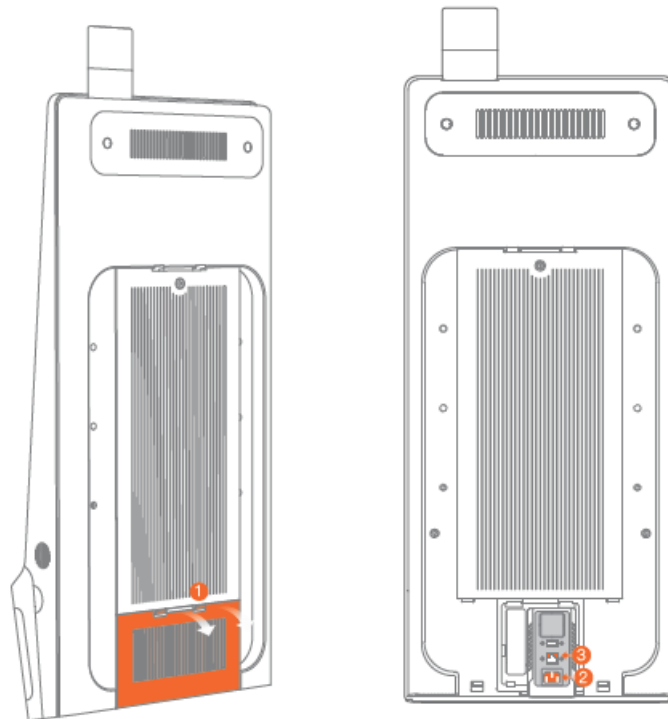


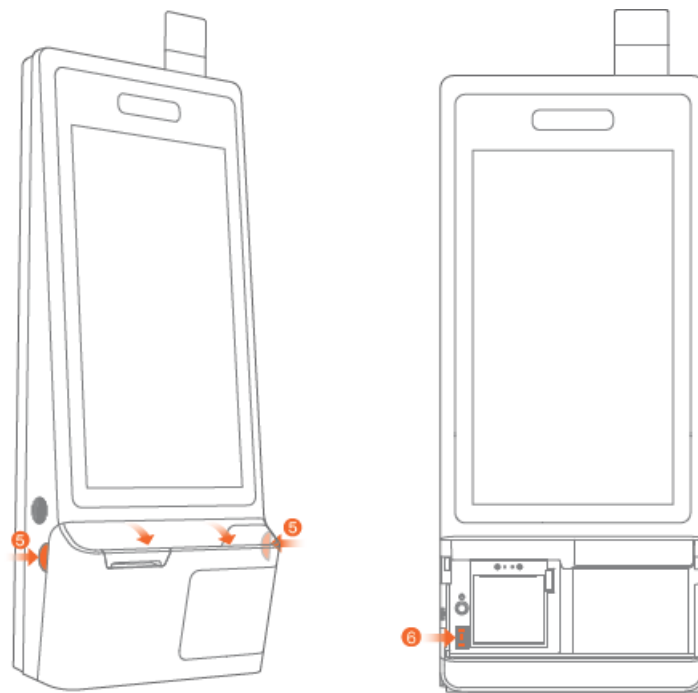
**sunmi F4E00 Self Checkout Kiosk**



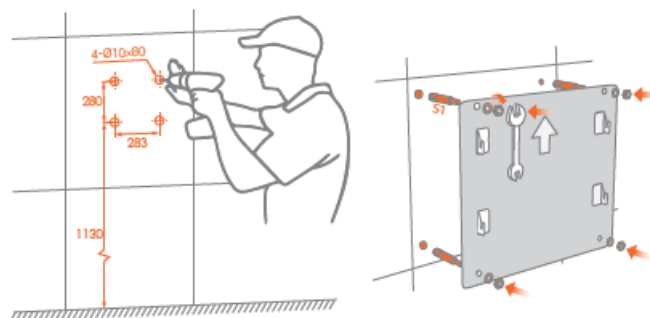
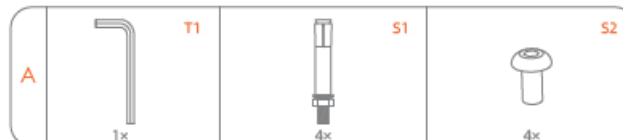
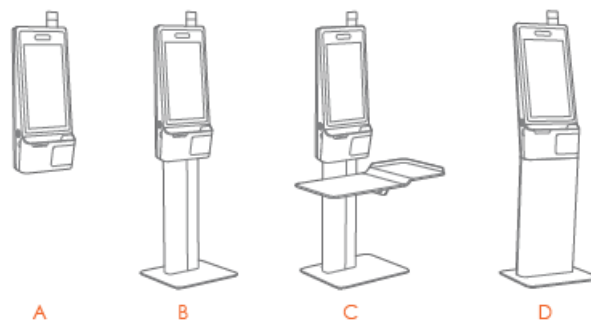
## Product Information

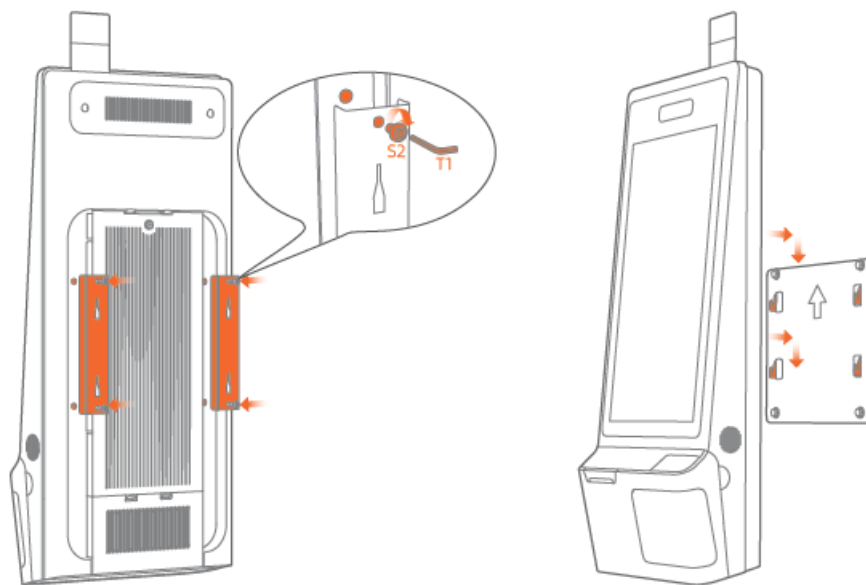
### Quick Start Guide








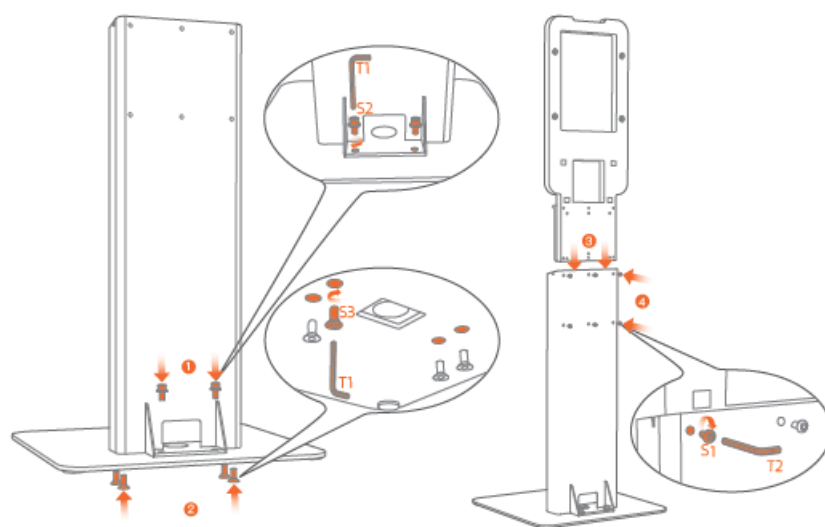


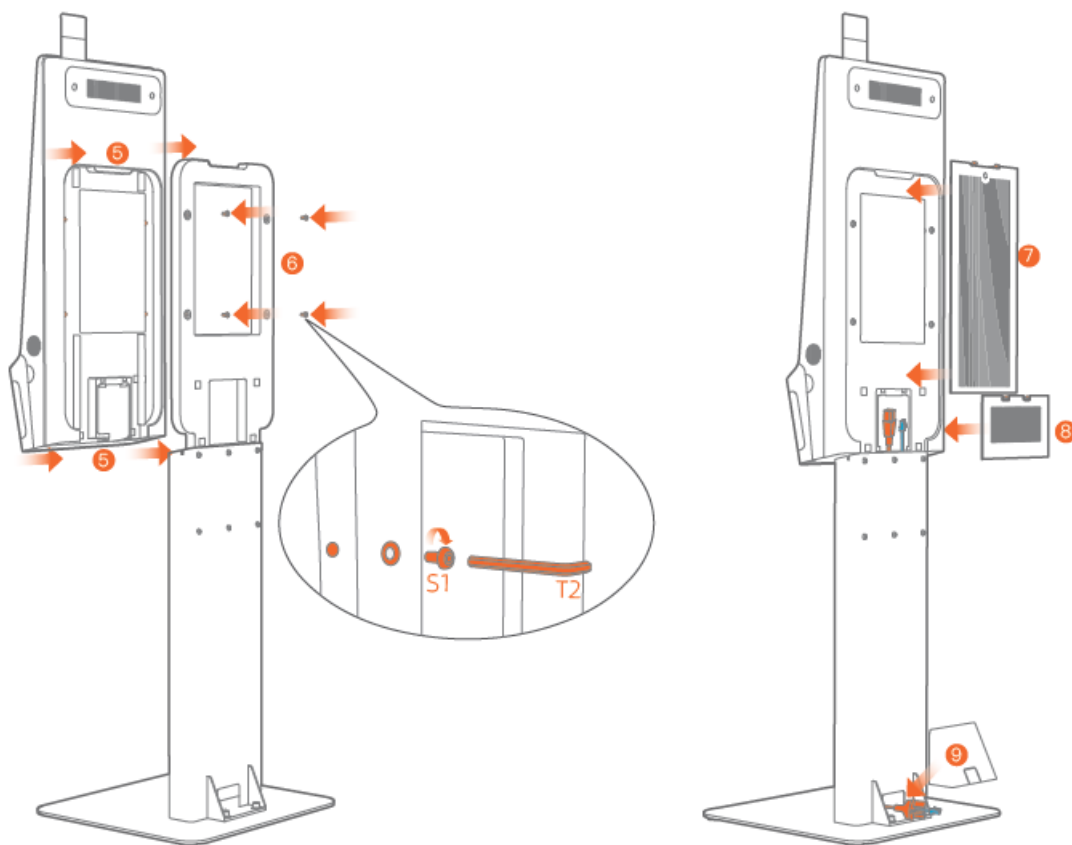
## Four installation styles





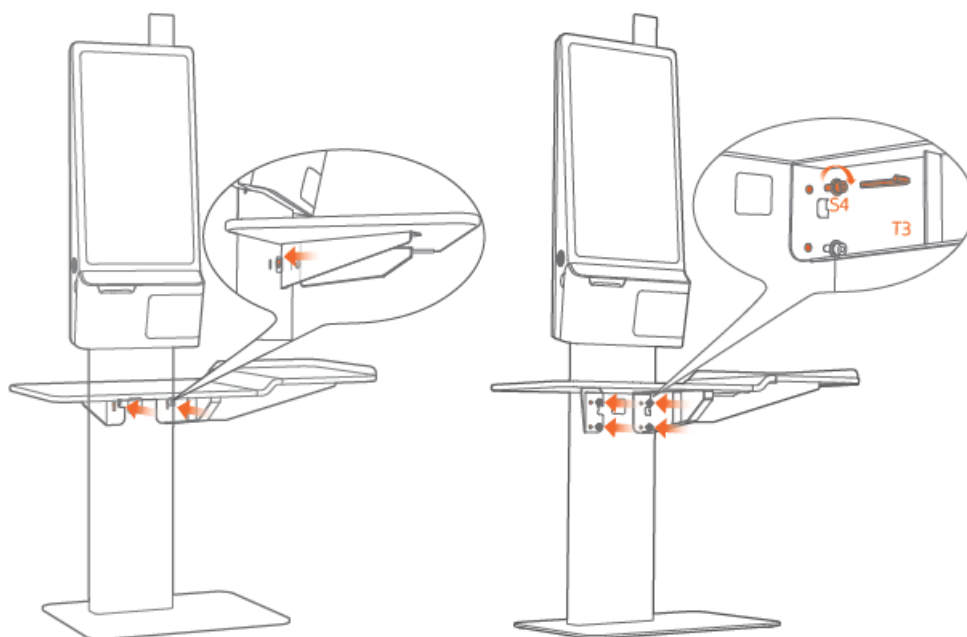
B	T1	T2	S1	S2	S3
	 1x	 1x	 10x	 2x	 4x

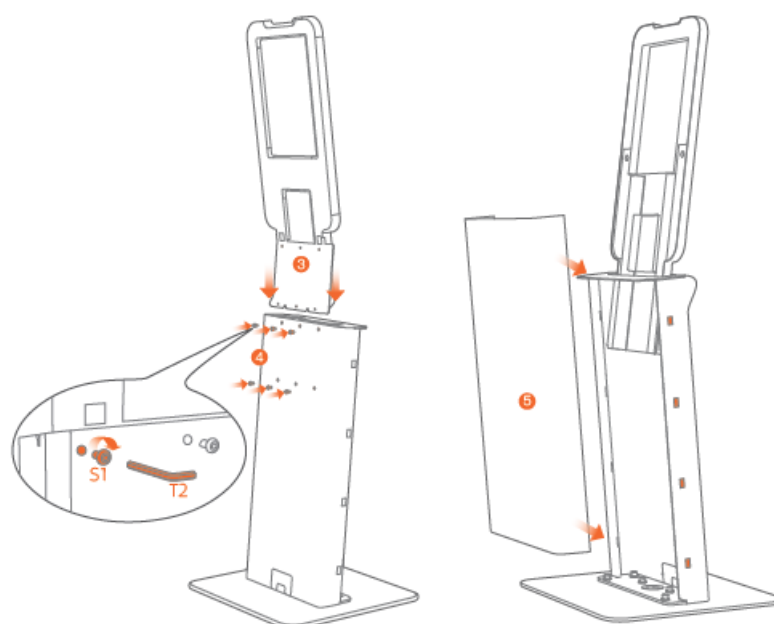
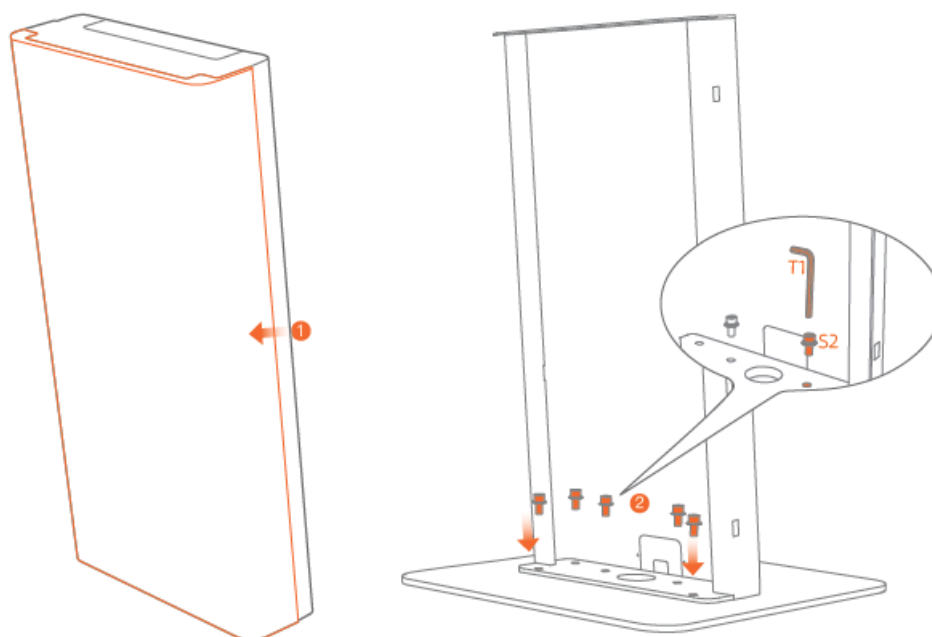


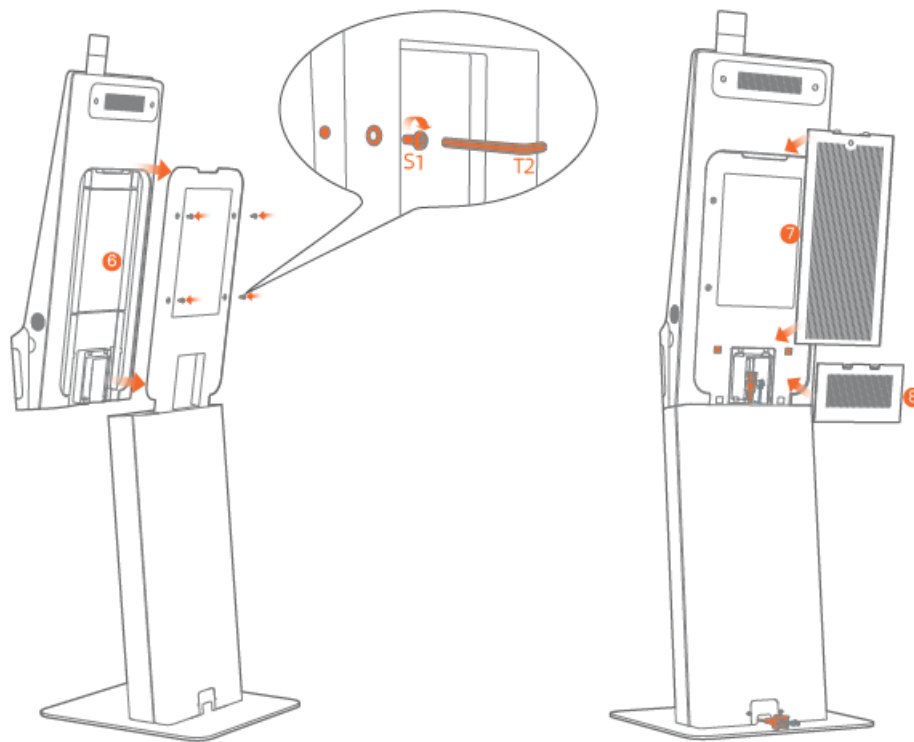


C	T1	T2	S1	S2	S3	T3	S4
	1x	1x	10x	2x	4x	1x	4x

(The same installation steps of the baseplate, stand and host with B)







## Specifications

- **Type:** Self-Service Kiosk
- **Installation Styles:** Four installation styles – T1, B, S2, S3
- **Net Weight (bare machine):** 16.5kg (Host), 58kg (Floor-standing with table), 45kg (Floor-standing Eco-service expansion), 50kg (Wall-mounted), 17kg (Machine size WDH)
- **Features:** Touch screen, Printer, Camera, Indicator light, NFC, Scanner, Wired network, USB debug

## Brief Introduction of Self-Service Kiosk

The Self-Service Kiosk is a smart commercial device suitable for various industries such as Chinese and Western catering, high-end department stores, supermarkets, convenience stores, information sites, interactive multimedia, scenic spots, etc. It is designed for cashier environments and provides convenient self-service options.

## Product Usage Instructions

### Quick Setting

After turning on the complete machine power supply, the screen will be lit. Then you will enter the first boot interface and simply operate according to the instructions. There are two types of internet modes available:

### Only several steps to enable the smart commercial device K2

After turning on the complete machine power supply, the screen will be lit. Then you will enter the first boot interface and just simply operate according to the instructions. There are two types of internet mode available for you.

### LAN Setting

1. After plugging the network cable correctly, click on "Setting" and select "Wired Network" to choose "Enable".
2. For an encrypted network connection, enter the access password.
3. Choose between automatically obtaining an IP address or manually entering an IP address.

## Wi-Fi Setting

1. Click on "Setting" and select "WLAN" to enter the WLAN search interface.
2. Wait for the available WLAN hotspots to be searched and listed.
3. Click on the desired WLAN to connect to the network.
4. Enter the access password for an encrypted network connection.

## How to Download/Use App

**To download and use relevant Apps, follow these steps:**

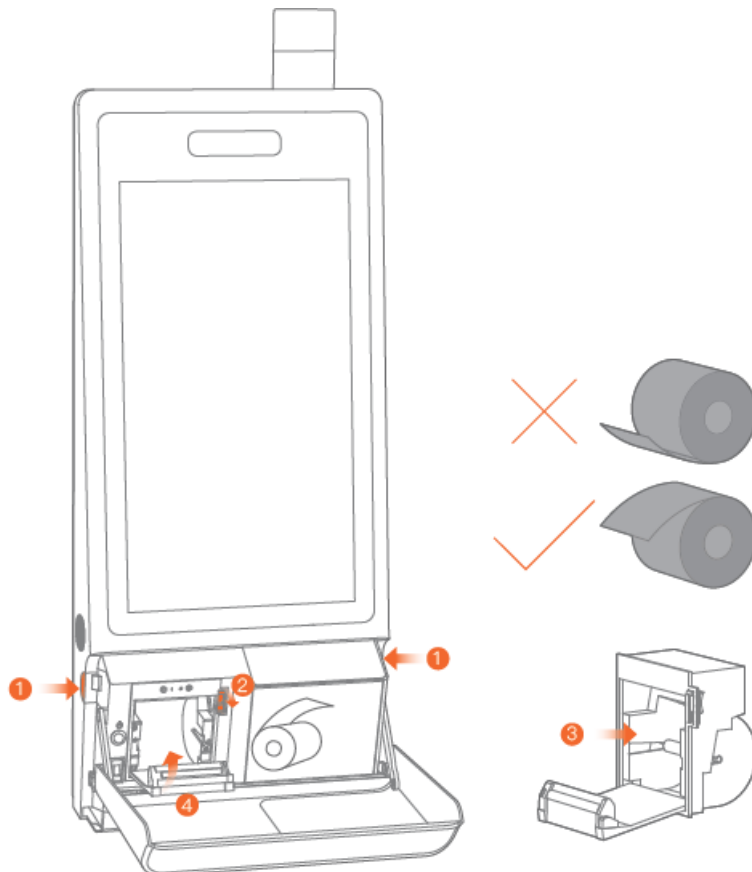
1. Turn on the Kiosk and access the App market on the Internet.
2. Search and download the relevant Apps for your specific needs.

The Self-service Kiosk is applicable for the cashier environment of commercial customers in various industries, such as Chinese and Western catering ,high-end department stores, supermarkets, convenience stores, information sites, interactive multi-media, scenic spot, etc. Please turn on the Kiosk and search & download the relevant Apps on the App market on Internet.

- **Facebook:** Sunmi tech
- **LinkedIn:** SUNMI Technology

Please read the internal machine help App for more help or call 400-6666-509 for free telephone services.

## Paper Changing Steps for the Inside Printer

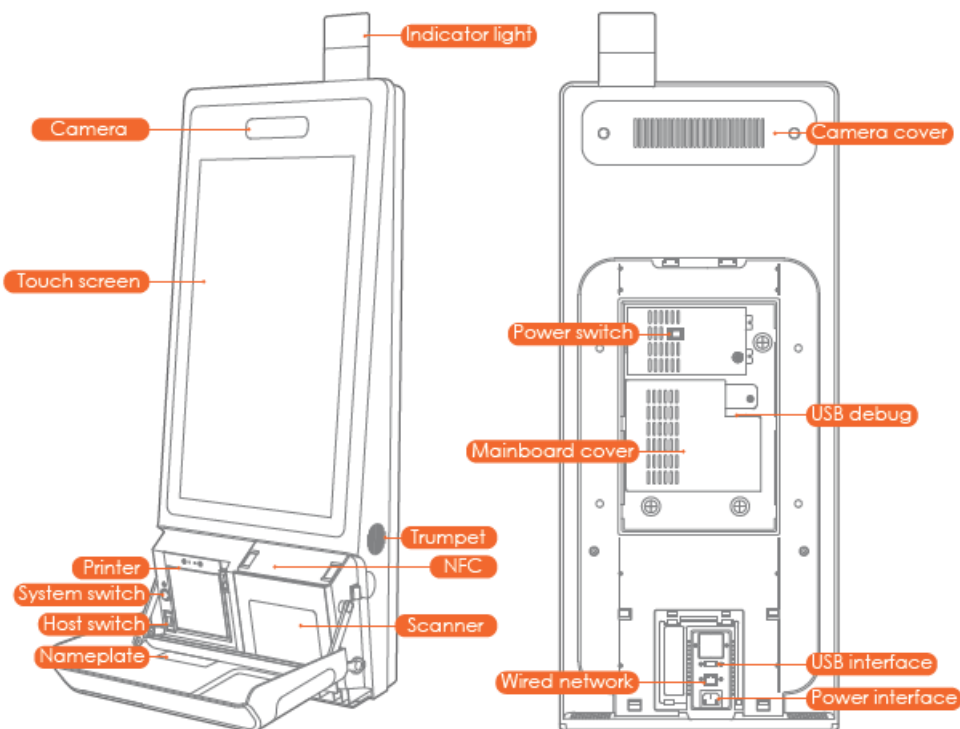




To change the paper in the printer, follow these steps:

1. **Open flip panel:** Press the buttons on both sides of the host simultaneously to open the flip panel.
2. **Open paper storage cover:** Toggle downward the printer driving lever to open the paper storage cover.
3. **Put in paper:** Insert the 80mm thermal sensitive paper with a roller into the printer and pull out a section outside the printer exit.
4. **Close the paper storage cover and flip panel:** Press both sides of the paper storage cover to close it. The printer will automatically cut the paper when powered on. In power-off state, manually tear off excessive paper and close the flip panel.

## Brief Introduction of Self-Service Kiosk



- **Camera**

Camera used to shoot image.

- **Touch screen**

Touchable screen applied for customer usage.

- **Printer**

Used to print receipt.

- **NFC**

Used for NFC card reading.

- **Scanner**

Used to read codes.

- **System switch**

In standby state, short press to boot, short press again to be in standby mode; In service state, long press for 2 to 3 seconds to choose to shut-down or restart; In the state of power-on, long press for 11 seconds to shut down the host.

- **Host switch**

Used to control the host power supply.

- **Camera cover**

Used to cover the camera inside the host.

- **USB debug**

On the mainboard and used for software update and debugging.

- **Mainboard cover**

Inside the host. Mainboard external interfaces, like USB port, TF card port, etc, will be exposed after opening it.

- **Wired network**

A wired network socket.

- **USB interface**

Used for external hardware equipment.

- **Power interface**

Used to plug the power line.

### Dimension Parameters of Bare Machine

Type	Machine size(WDH)	Net weight( bare machine)
Host	394 × 171 × 920 mm	16.5kg
Floor-standing with table	1018 × 645 × 1850 mm	58kg
Floor-standing	540 × 490 × 1850 mm	45kg
Eco-service expansion	540 × 490 × 1810 mm	50kg
Wall-mounted	394 × 171 × 1017 mm	17kg

### Package packing List of K2 Host

	K2 Host	1	
	K2 Wall-mounted rack	1	(Wall-mounted)
	Accessory Box	1	
	Printing paper	1	In accessory box
	Host power line(National standard)	1	In accessory box
	Host network cable	1	In accessory box
	Host keys	2	In accessory box(optional)
	Screw bag	1	In accessory box
	User Guide	1	Including packing content, warranty card and certificate

### Table for Names and Content Identification of Toxic and Hazardous Substances in this Product

Part Name	Toxic or Hazardous Substances and Elements									
	Pb	Hg	Cd	Cr(VI)	PBB	PBDE	DEHP	DBP	BBP	DIBP
Circuit Board Component	×	○	○	○	○	○	○	○	○	○
Structural Component	○	○	○	○	○	○	○	○	○	○
Packaging Component	○	○	○	○	○	○	○	○	○	○

- indicates that the content of the toxic and hazardous substance in all homogeneous materials of the component is below the limit specified in SJ/T 11363-2006.
- ×
 indicates that the content of the toxic and hazardous substance in at least one homogeneous material of the component exceeds the limit stipulated in SJ/T 11363-2006. However, as for the reason, because there is no mature and replaceable technology in the industry at present.

The products that have reached or exceeded environmental protection service life should be recycled and reused according to the Regulations on Control and Management of Electronic Information Products, and should not be discarded randomly.

## FCC compliance statement

This device complies with Part 15 of the FCC Rules.

### Operation is subject to the following two conditions:

1. this device may not cause harmful interference, and
2. this device must accept any interference received, including interference that may cause undesired operation.

**Note:** This equipment has been tested and found to comply with the limits for a Class B digital device, pursuant to part 15 of the FCC Rules. These limits are designed to provide reasonable protection against harmful interference in a residential installation. This equipment generates, uses and can radiate radio frequency energy and, if not installed and used in accordance with the instructions, may cause harmful interference to radio communications. However, there is no guarantee that interference will not occur in a particular installation. If this equipment does cause harmful interference to radio or television reception, which can be determined by turning the equipment off and on, the user is encouraged to try to correct the interference by one or more of the following measures:

- Reorient or relocate the receiving antenna.
- Increase the separation between the equipment and receiver.
- Connect the equipment into an outlet on a circuit different from that to which the receiver is connected.
- Consult the dealer or an experienced radio/TV technician for help.

**Caution:** The user is cautioned that changes or modifications not expressly approved by the party responsible for compliance could void the user's authority to operate the equipment. This equipment complies with FCC radiation exposure limits set forth for an uncontrolled environment. This equipment should be installed and operated with minimum distance 20cm between the radiator & your body.

## ISED Canada compliance statements

This device complies with ISED Canada licence-exempt RSS standard(s).

### Operation is subject to the following two conditions:

1. this device may not cause interference, and
2. this device must accept any interference, including interference that may cause undesired operation of the device.

the device for operation in the band 5150-5250 MHz is only for indoor use to reduce the potential for harmful interference to co-channel mobile satellite systems; This equipment complies with RSS-102 radiation exposure limits set forth for an uncontrolled environment. This equipment should be installed and operated with minimum distance 20cm between the radiator & your body.

### EU regulatory conformance

Hereby, Shanghai Sunmi Technology Co., Ltd. declares that this device is in compliance with the essential requirements and other relevant provisions of Radio Equipment Directive 2014/53/EU. The full text of the EU declaration of conformity is available at the following internet address:

<https://developer.sunmi.com/docs/read/en-US/maaegh-jk480>.

### INFORMATION ABOUT THE SOFTWARE

The description of accessories and components, including software, which allow the radio equipment to operate as intended, can be obtained in the full text of the EU declaration of conformity at the following internet address:


<https://developer.sunmi.com/docs/read/en-US/maaeghjk480>.


### RESTRICTIONS OF USE

This product may be used in the following European member states subject to the following restrictions. For products that operate in the frequency band 5.150 to 5.350 GHz, wireless access systems (WAS), including radio local area networks (RLANs), shall be restricted to indoor use.

- **EU Representative** :SUNMI France SAS 186,avenue Thiers,69006 Lyon, France



-  This symbol means that it is forbidden to dispose the product of with normal household waste. At the end of the product life cycle, waste equipment should be taken to designated collection points, returned to the distributor when purchasing a new product, or contact your local authority representative for detailed information on WEEE recycling.

	BE	BG	CZ	DK	HU	MT
	DE	EE	IE	EL	NL	AT
	ES	FR	HR	IT	PL	PT
	CY	LV	LT	LU	SK	FI
	RO	SI	SE	UK(NI)	UK	
Note:In all EU and UK member states, operation of 5150-5250MHz is restricted to indoor use only.						

### RF Exposure Statement (SAR)

- This equipment complies with EU, FCC and IC RSS-102 radiation exposure limits set forth for an uncontrolled environment.
- This equipment should be installed and operated with minimum distance 20cm between the radiator & your body.

**CAUTION:** Risk of fire or explosion if the battery is replaced by an incorrect type.

Product warranty card	
Product Name: _____	<b>Free warranty is not available for:</b> <ul style="list-style-type: none"> <li>• Dismantle and repair the product without permission.</li> <li>• The bar code and fragile stickers of the product are damaged, and the warranty card is altered or incomplete.</li> <li>• Failure to operate the equipment in accordance with the instructions.</li> <li>• Artificial damage caused by failure, scratch or damage due to water inflow or falling.</li> <li>• Failure or damage caused by force majeure.</li> <li>• Beyond the warranty period.</li> </ul>
Product model: _____	
Product No.: _____	
Date of purchase: _____	
Warranty period: from the date of purchase, our company provides ____ day warranty service.	
Contact information:	
• Company address: _____	
• Contact number: _____	



K2 OPEN BOX

## Points for Attention

### Safety warning

Please plug the AC plug into the AC socket corresponding to the identification input on the power adapter of the accessory;

- It is strictly forbidden to use it at a site with the existence of any potential explosive gas;
- Risk of fire or explosion if the battery is replaced by an incorrect type;
- This is a professional equipment, so no- professionals are not allowed to open the internal module at will, to avoid danger.
- This is a A grade product. In the living environment, this product may cause radio interference. In this case, the user maybe required to apply feasible measures against the interference.
- Only suitable for safe use at altitudes up to 5000 meters.

### Points for attention about the power supply

- Please unplug the plug from the power supply AC socket to completely disconnect the power supply connection of the device;

- The power supply socket should be installed near the device, and be easy to contact.

### **Important Safety Instructions**

- Avoid it to be installed or used during the thunder & lightning period, otherwise there will be risk of being electrically shocked by it;
- When you have discovered unusual odor, overheat or smog, please cut off the power supply at once!
- The paper knife is relatively sharp, please don't touch it!

### **Statement**

Our company will not be responsible for the results of the following actions Damage caused by usage & maintenance not under the conditions of this guidance note; Our company will not be responsible for any damage or problem caused by any option or consumable (not the initial product or recognized product provided by our company). You have no right to make product company;

### **FCC Statement**

- Please take attention that changes or modification not express Ly approved by the party responsible for compliance could void the user's authority to operate the equipment.
- This device complies with Part 15 of the FCC Rules.

### **Operation is subject to the following two conditions:**

1. This device may not cause harmful interference, and
2. This device must accept any interference received, including interference that may cause undesired operation.

This equipment complies with FCC radiation exposure limits set forth for an uncontrolled environment. This equipment should be installed and operated with minimum distance 20cm between the radiator & your body.

### **Suggestions**

- Do not use it near the water or in the humid environment, to prevent the liquid from dropping into the terminal;
- Do not use it in extreme cold or hot environment.

### **For example:**

near the ignition source or lighted cigarette;

- Do not drop, throw or bend it;
- Try best to use it in clean and dust-free environment, to prevent small items from dropping into the terminal;
- Do not use it nearby the medical devices when not allowed.

### **Disclaimer**

Due to the product update, certain details of this document may be inconsistent with the product .Please refer to the material item. Our company owns the interpretative right of this document. We reserve the right to modify this user guide without giving advance notice.

### **Product certificate**


- **Manufacture:** Shanghai SUNMI Technology Co.,Ltd.
- **Address:** Room 505,Building 7,No. 388,Songhu Rd, Shanghai, China.
- **Mail:** [contactus@sunmi.com](mailto:contactus@sunmi.com)
- **Phone:** 400-6666-509

## FAQ

- **Q: What are the installation styles available for the Self-Service Kiosk?**  
**A:** The Self-Service Kiosk offers four installation styles – T1, B, S2, and S3.
- **Q: Can I connect to the internet using both LAN and Wi-Fi?**  
**A:** Yes, you can choose either LAN or Wi-Fi for internet connectivity on the Self-Service Kiosk.
- **Q: How can I change the paper in the printer?**  
**A:** To change the paper in the printer, follow the “Paper Changing Steps for the Inside Printer” instructions provided above.
- **Q: What are the dimensions and weight of the bare machine?**  
**A: The dimensions and net weights of the bare machine are as follows:**
  - **Host:** 16.5kg
  - **Floor-standing with table:** 58kg
  - **Floor-standing Eco-service expansion:** 45kg
  - **Wall-mounted:** 50kg
  - **Machine size (WDH):** 17kg

---

## Documents / Resources

	<a href="#">sunmi F4E00 Self Checkout Kiosk</a> [pdf] User Guide F4E00 Self Checkout Kiosk, F4E00, Self Checkout Kiosk, Checkout Kiosk, Kiosk
---	--

## References

- [🔗 developer.sunmi.com/docs/read/en-US/maaegh-](https://developer.sunmi.com/docs/read/en-US/maaegh-)
- [🔗 developer.sunmi.com/docs/read/en-US/maaeghjk480](https://developer.sunmi.com/docs/read/en-US/maaeghjk480)
- [User Manual](#)