

SUNMI

**D3PRO 3rd Gen
Smart Desktop
Terminal**



Sunmi D3PRO 3rd Gen Smart Desktop Terminal User Manual

[Home](#) » [Sunmi](#) » Sunmi D3PRO 3rd Gen Smart Desktop Terminal User Manual 

Contents

- [1 Sunmi D3PRO 3rd Gen Smart Desktop Terminal](#)
- [2 Specifications](#)
- [3 Product Usage Instructions](#)
- [4 FAQ](#)
- [5 Product Overview](#)
- [6 Terminal Installation](#)
- [7 Power On](#)
- [8 Customer Display Installation](#)
- [9 Network settings](#)
- [10 Optional Functions](#)
- [11 Points for Attention](#)
- [12 App/Software](#)
- [13 FCC compliance statement](#)
- [14 Documents / Resources](#)
 - [14.1 References](#)

SUNMI

Sunmi D3PRO 3rd Gen Smart Desktop Terminal



Specifications

- Screen Size: 15.6 inches
- Resolution: 1920×1080 pixels
- Additional Display: 10.1 inches, 1200×800 pixels
- Wireless Connectivity: Wi-Fi
- Optional Functions: NFC, Fingerprint button

Product Usage Instructions

Terminal Installation

1. Install the base.
2. Open the front cover on the stand.
3. Connect the power adapter cable by putting it through the hole on the base and connecting it to the power port.
4. Install the front cover.

Power On

1. Connect the power cable to an AC power socket.

2. Press the power button to turn on the screen and follow the on-screen guidance.

Customer Display Installation

1. Turn off the terminal or disconnect it from the power supply.
2. Install the customer display on the stand as shown in the image provided.
3. To remove the customer display, slide the toggle from left to right, and push the display up.

Network Settings

Configure Wi-Fi settings as needed for network connectivity.

Optional Functions

- NFC (optional): Located on the 10.1-inch customer display right side.
- Fingerprint button (optional): Use Fingerprint ID for terminal unlock.

Points for Attention

Ensure safety warnings are observed. SUNMI disclaims responsibility for certain actions. Refer to important safety instructions and disclaimer.

Suggestions

Use the POS terminal to accept payments in various retail settings. Connect to a network for app access. Manage apps in Settings as needed.

FAQ

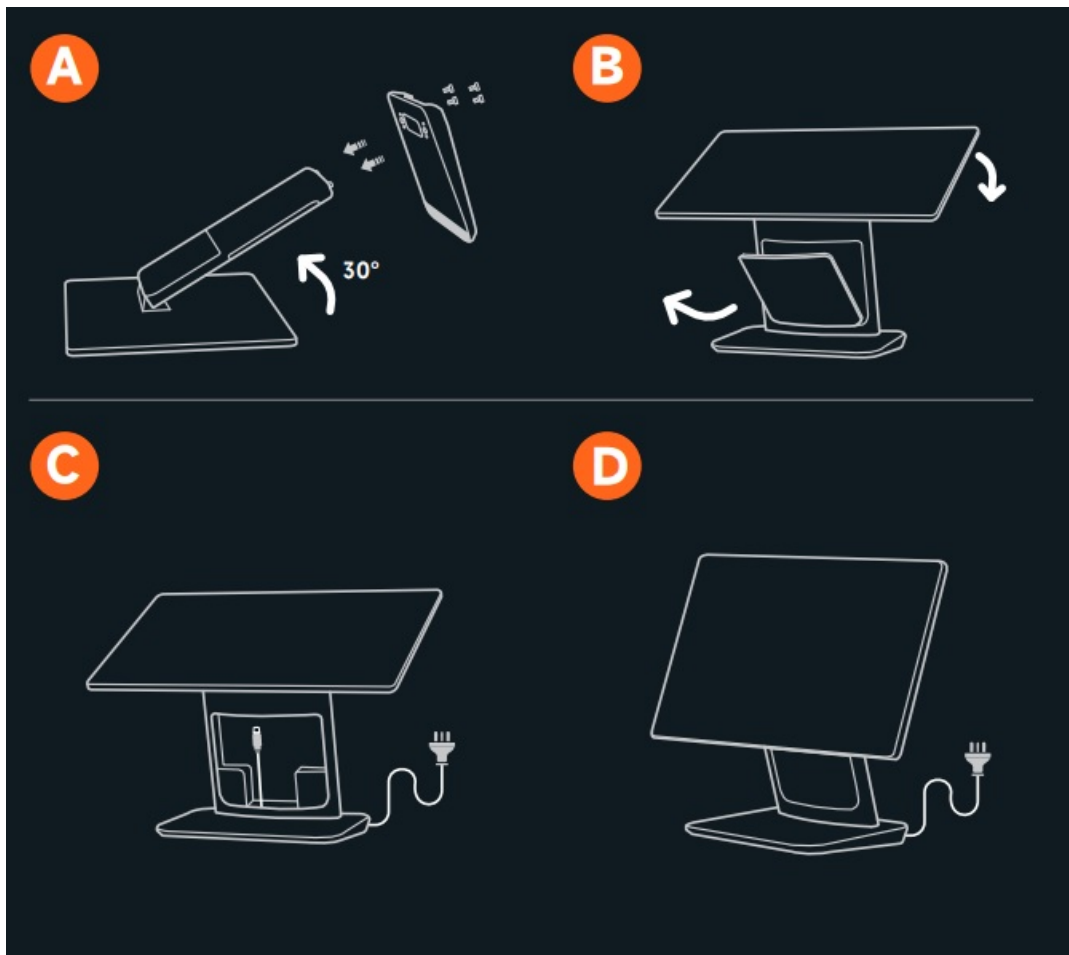
- **Q: How do I uninstall apps on the terminal?**
 - A: Navigate to Setting->App->Manage App and uninstall apps from there, or drag them to the trash to uninstall.
- **Q: How can I configure the Wi-Fi settings?**
 - A: Access Wi-Fi settings in the network settings menu and configure as required for network connectivity.

Product Overview



Terminal Installation

- **A. Install the base.**
 - Put the terminal on the table with its screen face down (please keep the table clean to avoid scratching the screen). Tilt the stand up about 30°. Face the base (the side with the logo and decorative stripe) toward the display. Install the base with the four M4 screws.
- **B. Open the front cover on the stand.**
- **C. Connect the power adapter cable.**
 - Put the cable through the hole on the base and connect it to the power port.
- **D. Install the front cover.**

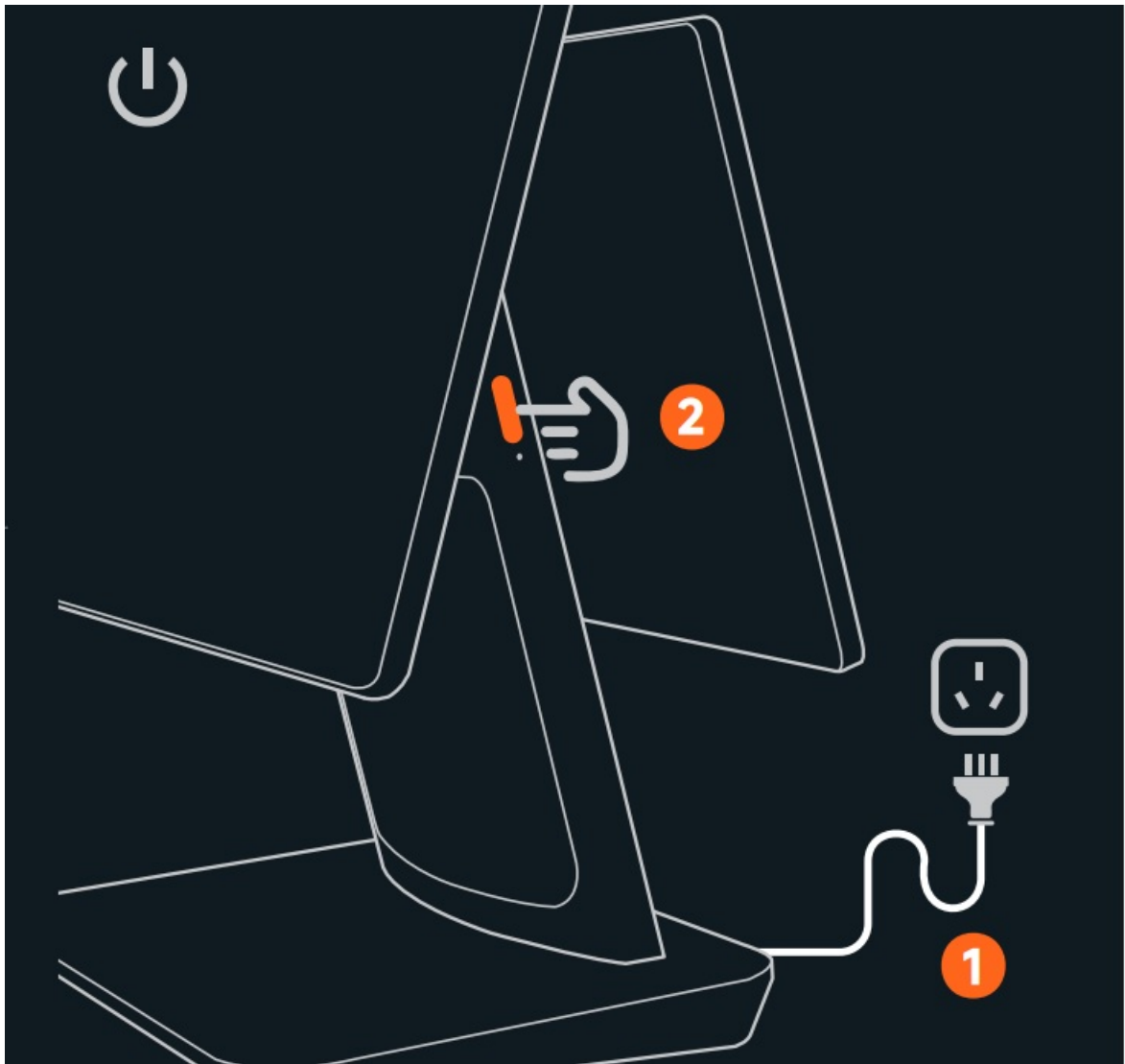


Power On

1. Connect the power cable.

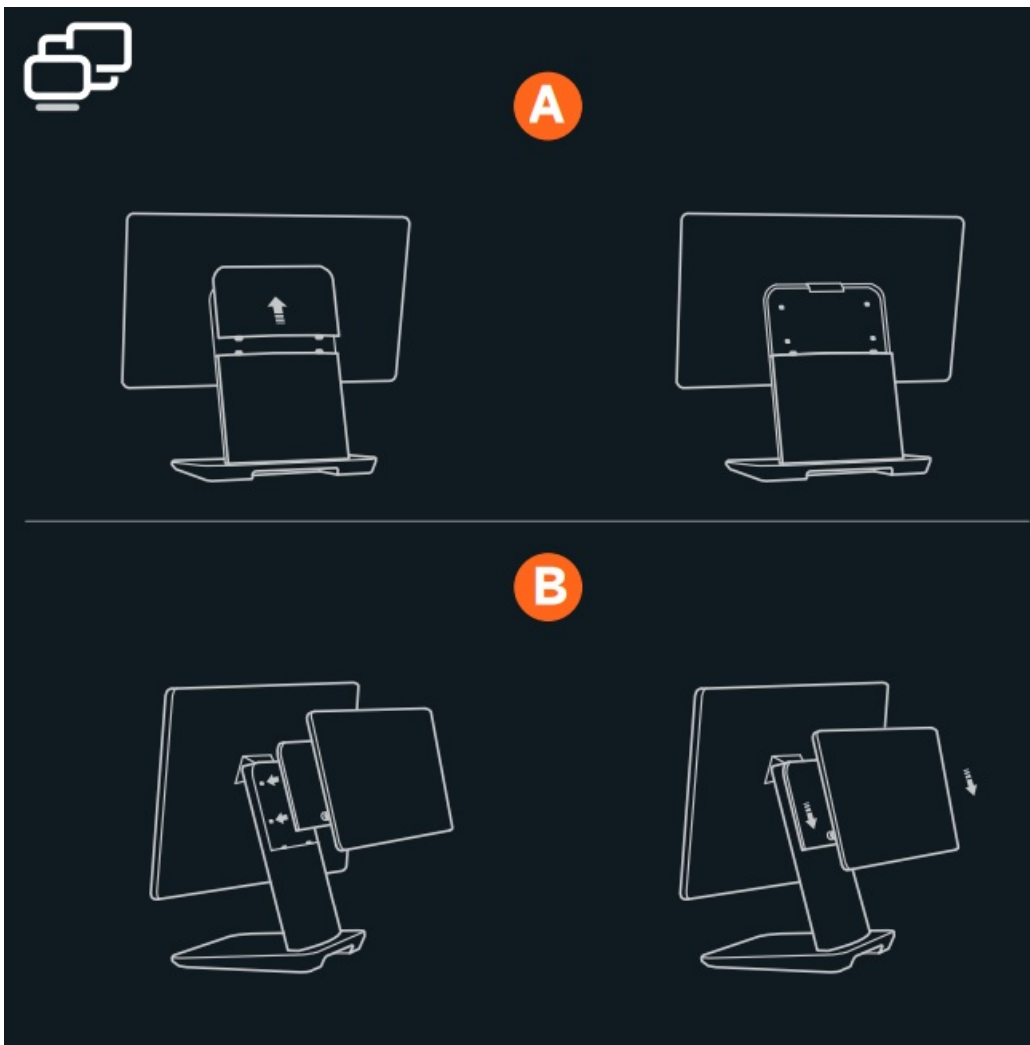
Connect the other end of the adapter to an AC power socket.

2. Press the power button to turn on the screen and enter into the boot interface, then you can operate in accordance with the guidance.
 - Press the button to boot up the device when it is off.
 - Press and hold the button for 2-3 seconds to power off or reboot the device when it is on.
 - Press and hold the button for 11 seconds to power off the device when it crashes.



Customer Display Installation

- A. Turn off the terminal or disconnect it from the power supply.
Push the back cover on the stand up to remove it.
- B. Install the customer display.
Install the customer display on the stand as shown on the image. To remove the customer display, please slide the toggle from the left side to the right side, and push the display up.



Network settings

Wi-Fi setting

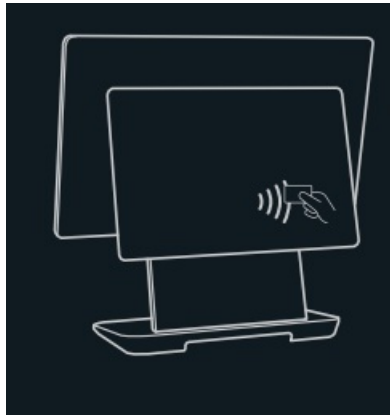
- Click “Setting” button, and then enable WLAN, enter WLAN search interface to wait for its searching and listing available WLAN hotspots;
- Click WLAN to be connected. If an encrypted network is selected, you are required to enter the access password to get connected.

Optional Functions



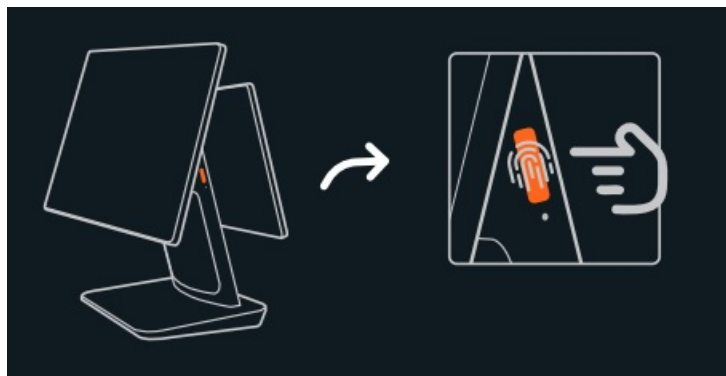
NFC (optional)

10.1” customer display right side (optional)



Fingerprint button (optional)

Fingerprint ID is available for terminal unlock.



Points for Attention

Safety Warning

- Please insert the AC plug into the AC socket corresponding to the input voltage of the power adapter;
- It is strictly forbidden to use it at a site with the existence of any potential explosive gas;
- Non-professionals are not allowed to tear down the power adapter to avoid dangers;

Declaration

SUNMI will not assume responsibility for the results of the following actions:

- Damages caused by use and maintenance without complying with the conditions specified in this user guide;
- Damages or problems caused by using option-al items or consumables that are not the initial products provided or approved by SUNMI;
- Modification or changing of the product without the permission of SUNMI is not allowed;
- The operating system of this product only supports official system updates. If the user uses a third-party ROM system to update the device or modifies the system files by cracking, it may lead to system instability and may bring safety risks and threats.

Important Safety Instructions

- Do not install or use the device during lightning storms to avoid the potential risks of lightning shock;
- When you have discovered an unusual odor, overheating or smoke, please cut off the power supply at once!

Disclaimer

Due to product update, certain details of this document may be inconsistent with the product, and the real device shall prevail. SUNMI owns the interpretative right of this document and reserves the right to modify this user guide without prior notice.

Suggestions

- Do not use it near water or in humid environment to avoid fluid falling into the terminal;
- Do not use it in extremely cold or hot environment. For example: near an ignition source or a lighted cigarette;
- Do not drop, throw or bend the device;
- Try your best to use it in a clean and dust-free environment, to prevent small items from dropping into the terminal;
- Do not use the device near medical facilities without permission.

App/Software

Use the POS terminal to accept payments from customers in supermarkets, shopping malls, department stores, convenience stores or restaurants, etc. You can connect the terminal to a network and open the App Store to get relevant apps. How to check app details: select "Setting->App" and select the app name to check its details; How to uninstall apps: select "Setting->App->Manage App" to uninstall an app, or you can drag the app to the trash to uninstall it.

FCC compliance statement

This device complies with Part 15 of the FCC Rules. Operation is subject to the following two conditions:

1. this device may not cause harmful interference, and
2. this device must accept any interference received, including interference that may cause undesired operation.

Note: This equipment has been tested and found to comply with the limits for a Class B digital device, pursuant to part 15 of the FCC Rules. These limits are designed to provide reasonable protection against harmful interference in a residential installation. This equipment generates, uses and can radiate radio frequency energy and, if not installed and used in accordance with the instructions, may cause harmful interference to radio communications. However, there is no guarantee that interference will not occur in a particular installation. If this equipment does cause harmful interference to radio or television reception, which can be determined by turning the equipment off and on, the user is encouraged to try to correct the interference by one or more of the following measures:

- Reorient or relocate the receiving antenna.
- Increase the separation between the equipment and the receiver.
- Connect the equipment into an outlet on a circuit different from that to which the receiver is connected.
- Consult the dealer or an experienced radio/TV technician for help.

Caution: The user is cautioned that changes or modifications not expressly approved by the party responsible for compliance could void the user's authority to operate the equipment.

ISED Canada compliance statements

This device complies with ISED Canada license-exempt RSS standard(s). Operation is subject to the following two conditions:

1. this device may not cause interference, and
2. this device must accept any interference, including interference that may cause undesired operation of the device.

The device for operation in the band 5150-5250 MHz is only for indoor use to reduce the potential for harmful interference to co-channel mobile satellite systems.

- This Class B digital apparatus complies with Canadian ICES-003.
- HVIN F3510 with fingerprint HVIN F3510A without fingerprint

EU regulatory conformance

Hereby, Shanghai Sunmi Technology Co., Ltd. declares that This device complies with the basic recommendations and other relevant measures in the 2014/53/EU directive. The full text of the EU Declaration of conformity is available at the following internet address <https://developer.sunmi.com/docs/read/en-US/maaeghjk480>

EU Representative : SUNMI France SAS 186, avenue Thiers, 69006 Lyon, France



This symbol means that it is forbidden to dispose the product of with normal household waste. At the end of the product life cycle, waste equipment should be taken to designated collection points, returned to the distributor when purchasing a new product, or contact your local authority representative for detailed information on WEEE recycling.

Note: In all EU and UK member states, operation of 5150-5350MHz is restricted to indoor use only.

INFORMATION ABOUT THE SOFTWARE

The description of accessories and components, including software, which allows the radio equipment to operate as intended, can be obtained in the full text of the EU declaration of conformity at the following internet address: <https://developer.sunmi.com/docs/read/en-US/maaeghjk480>

RESTRICTIONS OF USE

This product may be used in the following European member states subject to the following restrictions. For products that operate in the frequency band 5.150 to 5.350 GHz, wireless access systems (WAS), including radio local area networks (RLANs), shall be restricted to indoor use.

RF Exposure Statement (SAR)

- This equipment complies with EU, FCC and IC RSS-102 radiation exposure limits set forth for an uncontrolled environment.
- This equipment should be installed and operated with a minimum distance 20cm between the radiator & your body.

Mode/Band	Operation Frequency	Power (dBm)
BT	2402-2480 MHz	9.44
BLE	2402-2480 MHz	6.63
2.4G Wifi	2412-2472 MHz	18.77
5.2G Wifi	5150-5250 MHz	18.43
5.3G Wifi	5250-5350 MHz	19.20
5.5G Wifi	5470-5725 MHz	19.49
5.8G Wifi	5725-5850 MHz	13.63

Scan to know more



- www.sunmi.com



Documents / Resources

	<p>Sunmi D3PRO 3rd Gen Smart Desktop Terminal [pdf] User Manual 2AH25D3PRO, 2AH25D3PRO, d3pro, D3PRO 3rd Gen Smart Desktop Terminal, D3PRO, 3rd Gen Smart Desktop Terminal, Smart Desktop Terminal, Desktop Terminal, Terminal</p>
---	---

References

- [SUNMI - BloT for Business 4.0](#)
- [User Manual](#)

Manuals+. Privacy Policy

This website is an independent publication and is neither affiliated with nor endorsed by any of the trademark owners. The "Bluetooth®" word mark and logos are registered trademarks owned by Bluetooth SIG, Inc. The "Wi-Fi®" word mark and logos are registered trademarks owned by the Wi-Fi Alliance. Any use of these marks on this website does not imply any affiliation with or endorsement.