



sunmi D2 POS Machine User Guide

[Home](#) » [Sunmi](#) » [sunmi D2 POS Machine User Guide](#) 

sunmi D2 POS Machine User Guide



Contents

- [1 Minimal Settings](#)
- [2 How to download/use APPs](#)
- [3 Package content](#)
- [4 Product Introduction](#)
- [5 Basic Parameters for POS Machine](#)
- [6 FCC compliance statement](#)
- [7 Precautions](#)
- [8 ISED Canada compliance statements](#)
- [9 EU regulatory conformance](#)
- [10 RF Exposure Statement \(SAR\)](#)
- [11 Documents / Resources](#)
 - [11.1 References](#)
- [12 Related Posts](#)

Minimal Settings

Only a few steps to turn on the intelligent business equipment.

1. Press the power button and the screen lights on. Enter the first start-up screen and operate according to the prompt. Two modes of Internet access are available.
2. Wi-Fi setting.
 1. Press [Setting] and start WLAN. Enter the searching interface of WLAN, waiting for WLAN network available;
 2. Click on the WLAN to be connected. A password is required for access if an encrypted network is chosen.
3. Setting of LAN

How to download/use APPs

Relevant Apps can be downloaded while the network is connected. Open the App market, and search and download the App to complete the installation.

To inquire detailed information of the above software: select “settings -> application”, and select corresponding software to inquire its information; how to uninstall the software: select “settings -> application -> application management -> uninstall” to uninstall the application; or press the icon and drag it into the trash can to uninstall it.

Please read the built-in Help APP for more help.

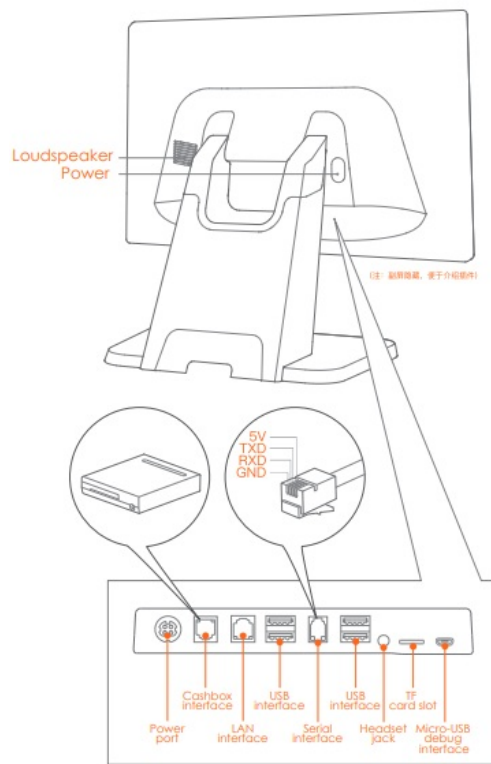
Package content

- 1× main machine
- 1× user manual
- 1× power adapter

Product Introduction

“Take main screen as sample”





Power

In the state of power off, a short press turns on the machine.

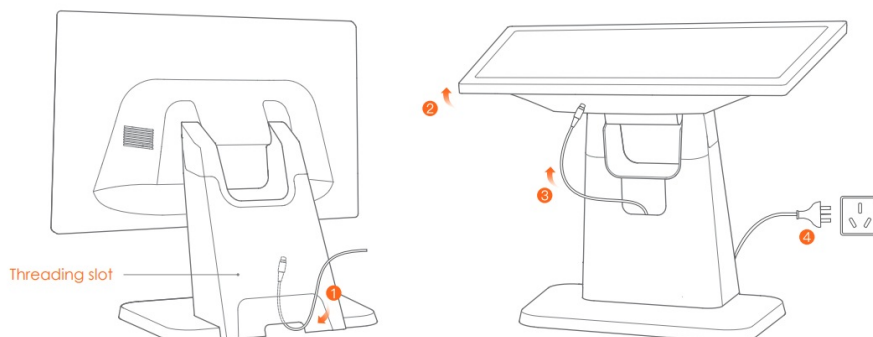
In the state of normal use, press on the power button for two or three seconds to choose power off or restart.

In the state of system halted, press on the power button for 11 seconds for power off.

Display

For the touch screen used by the operator.

Threading installation



1. Thread the power line through the rear via hole of the base;
2. Turn the screen over to expose the threading hole;
3. Connect the power interface of the adapter to the power port at the bottom of the host;
4. Insert the other plug of the adapter into the mains socket.

Basic Parameters for POS Machine

Operating system	Based on Android
Processor	Cortex-A53, 1.2GHz
Display resolution	15.6'' resolution HD 1366 x 768 (the actual product will prevail)
Storage	8GB ROM + 1GB RAM or 8GB ROM + 2GB RAM (the actual product will prevail)
Touch screen	Multi-touch capacitive display
Wi-Fi	Support 802.11b/g/n 2.4GHz
Bluetooth	Support Bluetooth 2.1/3.0/4.0
Loudspeaker	Single 1.2W voice reaches 90db
External interface	4 x USB Type A interfaces, 1x RJ11 serial interface, 1 x RJ12 24V cashbox interface, 1x RJ45 LAN interface, 1 x headset jack, 1x power port, 1x Micro-USB debug interface, 1 x TF card slot
External storage card	MicroSD (TF), 64G maximum
AC adapter	Input: AC100~240V/1.5A Output: DC24V/1.5A

FCC compliance statement

This device complies with Part 15 of the FCC Rules. Operation is subject to the following two conditions: (1) this device may not cause harmful interference, and (2) this device must accept any interference received, including interference that may cause undesired operation.

Note: This equipment has been tested and found to comply with the limits for a Class B digital device, pursuant to part 15 of the FCC Rules. These limits are designed to provide reasonable protection against harmful interference in a residential installation. This equipment generates, uses and can radiate radio frequency energy and, if not installed and used in accordance with the instructions, may cause harmful interference to radio communications. However, there is no guarantee that interference will not occur in a particular installation. If this equipment does cause harmful interference to radio or television reception, which can be determined by turning the equipment off and on, the user is encouraged to try to correct the interference by one or more of the following measures:

- Reorient or relocate the receiving antenna.
- Increase the separation between the equipment and receiver.
- Connect the equipment into an outlet on a circuit different from that to which the receiver is connected.
- Consult the dealer or an experienced radio/TV technician for help.

Caution: The user is cautioned that changes or modifications not expressly approved by the party responsible for compliance could void the user's authority to operate the equipment.

Configurations and parameters listed in this page are indicative and actual products on the market shall prevail.

Precautions

Warning

- Please insert the AC plug into the AC outlet according to the identifying input on the power adapter;
- Please use the device within the temperature range of 0 °C ~ 40 °C, and store the device and accessories within the range of – 20 °C ~ 60 °C;
- It is prohibited to use the device in any places with potential explosive gases;
- Nonprofessionals shall not open the power adapter anyhow so as to avoid dangers;
- The device is a Grade A product. In living environment, the product may cause radio interference. Therefore, users may be required to take practical measures against the interference.
- About the battery replacement:
 1. It may cause explosion with wrong type battery!
 2. Old battery which is replaced should be handled

Recommendation

- Do not use the device near water or in humid environment. Keep liquid from falling onto the terminal;
- Do not use the device in extremely cold and hot environment, e.g. around fire or lighted cigarettes;
- Do not smash, throw or bend the device;
- Use the device in clean and dust free environment as much as possible and keep small items from falling into the terminal;
- Do not use it near medical devices unless permitted.

Important Safety Instructions

- Avoid installing or using during thunder and lightning, otherwise lightning stroke may occur;
- Cut off the power immediately if there is abnormal smell, overheating or smog!

Statement

The company is not responsible for the following behaviors:

- Damages caused by using and maintaining the device without following the User Guide;
- Damages or problems caused by selection of objects or consumables (products which are not the initial ones provided or recognized by the company)
- No one is entitled to modify or change the product unless permitted by the company
- The operating system of this product supports the official system update. If the third party's ROM system is swiped by the user or the system file is modified with cracking method, it may lead to the instability of the system and bring about safety risk & security threat.

Disclaimer

Discrepancies between the product and the file concerning details may arise due to product updates. Please be subject to the material object. The company reserves the right to interpret the file and the right to revise this manual without prior notices

ISED Canada compliance statements

This device complies with ISED Canada licence-exempt RSS standard(s). Operation is subject to the following two conditions:

1. this device may not cause interference, and
2. this device must accept any interference, including interference that may cause undesired operation of the device.

EU regulatory conformance

Hereby, Shanghai Sunmi Technology Co., Ltd. declares that this device is in compliance with the essential requirements and other relevant provisions of Radio Equipment Directive 2014/53/EU. The full text of the EU declaration of conformity is available at the following internet address: www.sunmi.com.

INFORMATION ABOUT THE SOFTWARE

The description of accessories and components, including software, which allow the radio equipment to operate as intended, can be obtained in the full text of the EU declaration of conformity at the following internet address: www.sunmi.com.

RESTRICTIONS OF USE

This product may be used in the following European member states subject to the following restrictions. For products that operate in the frequency band 5.150 to 5.350 GHz, wireless access systems (WAS), including radio local area networks (RLANs), shall be restricted to indoor use.



EU Representative :SUNMI France SAS
186,avenue Thiers,69006 Lyon,France



This symbol means that it is forbidden to dispose the product of with normal household waste. At the end of the product life cycle, waste equipment should be taken to designated collection points, returned to the distributor when purchasing a new product, or contact your local authority representative for detailed information on WEEE recycling.

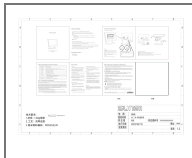
RF Exposure Statement (SAR)

- This equipment complies with EU, FCC and IC RSS-102 radiation exposure limits set forth for an uncontrolled environment.
- This equipment should be installed and operated with minimum distance 20cm between the radiator & your body.

Manufacturer: Shanghai Sunmi Technology Co., Ltd.

Address: Room 505, Building 7, KIC, 388 Songhu Road, Yangpu District, Shanghai, PR China.

Documents / Resources



[sunmi D2 POS Machine](#) [pdf] User Guide
D22ND, 2AH25D22ND, D2 POS Machine, POS Machine

References

- [SUNMI - BloT for Business 4.0](#)