

SUNGROW
Logger1000A-EU Data
Logger



SUNGROW Logger1000A-EU Data Logger Installation Guide

[Home](#) » [SUNGROW](#) » SUNGROW Logger1000A-EU Data Logger Installation Guide 

Contents

- [1 SUNGROW Logger1000A-EU Data Logger](#)
- [2 Product Specifications](#)
- [3 Product Usage Instructions](#)
- [4 Validity](#)
- [5 Safety](#)
- [6 Typical Application](#)
- [7 Mechanical Installation](#)
- [8 Frequently Asked Questions](#)
- [9 Documents / Resources](#)
 - [9.1 References](#)

SUNGROW

SUNGROW Logger1000A-EU Data Logger



Product Specifications

- Model: Logger1000A-EU
- Wireless LAN (WLAN) Frequency: 2.4GHz/5GHz
- WLAN Transmission Power: 20 dBm for 2.4 GHz, 20 dBm for 5 GHz (5.1~5.7), 14 dBm for 5GHz (5.7~5.8)
- 4G LTE Bands: LTE(FDD) B1,B3,B7,B8,B20,B28A; LTE(TDD) B38,B40
- 4G LTE Frequency Bands: Various ranges for different LTE bands

Product Usage Instructions

Safety Precautions:

Before installation, ensure the package contents are intact and complete against the packing list. Wear proper personal protective equipment (PPE) during operations.

Installation:

Qualified personnel trained in electrical systems should perform all operations. Refer to the user manual and local regulations for detailed instructions.

Wireless LAN (WLAN) Setup:

Configure WLAN settings by accessing the device interface and selecting the appropriate frequency (2.4GHz or 5GHz) based on your network requirements.

4G LTE Connection:

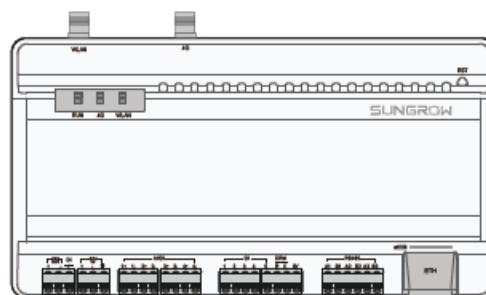
Connect to the available LTE networks by selecting the correct LTE band corresponding to your region's frequency spectrum.

Validity

This manual is valid for the following data loggers.

Logger1000A-EU

The foregoing Loggers are referred to as the "Logger1000" for short unless otherwise specified.



Logger-1000A-EU

Safety

1. Contents may be periodically updated or revised due to product development. The information in this guide is subject to change without notice. In no case shall this guide substitute for the user manual or related notes on the device.
2. Make sure to read over, fully understand and strictly follow the detailed instructions of the user manual and

other related regulations. Scan the bottom QR Code of the cover to view or obtain the user manual.

3. All operations can be performed only by qualified personnel, that must be trained in the installation and commissioning of the electrical system, as well as the dealing with hazards, have knowledge of the manual and of the local regulations and directives.
4. Before installation, check that the package contents are intact and complete against the packing list. Contact SUNGROW or the distributor in case of any damaged or missing components.
5. The cable must be intact and well insulated. Operation personnel must wear proper personal protective equipment (PPE) all the time.
6. Any violation could result in personal death or injury or device damage, and will void the warranty.

EU Declaration of Conformity within the scope of the EU directives

- Restriction of the use of certain hazardous substances 2011/65/EU and 2015/863/EU (RoHS)
- The radio equipment directive 2014/53/EU (RED)

SUNGROW confirms herewith that the products described in this document are in compliance with the fundamental requirements and other relevant provisions of the abovementioned directives. The entire EU Declaration of Conformity can be found at support.sungrowpower.com.

WLAN

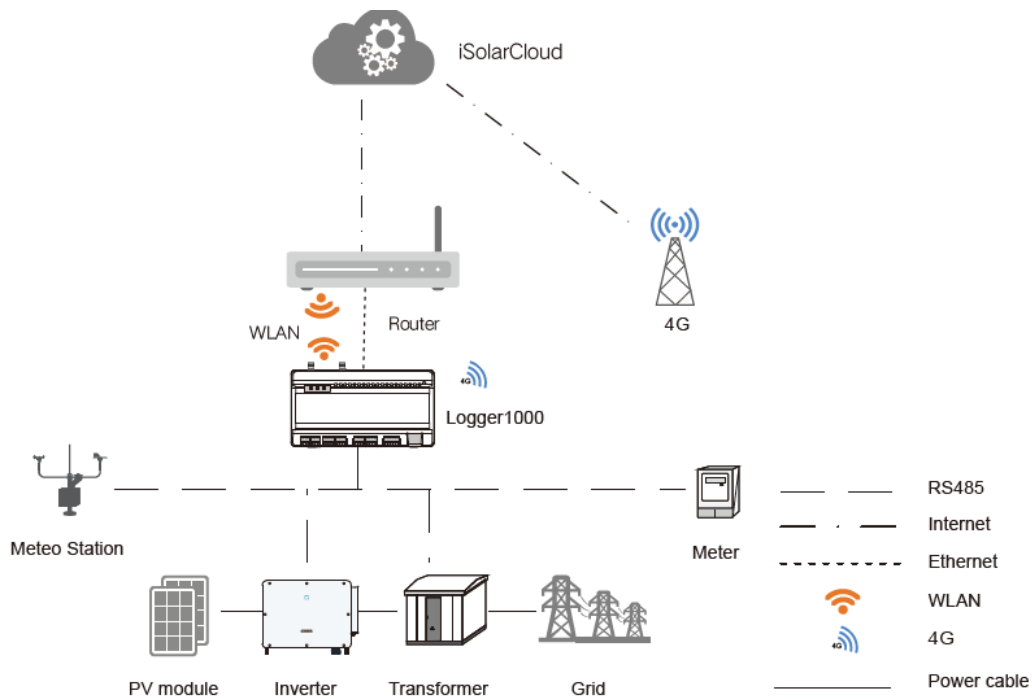
Radio technology	WLAN 2.4GHz/5GHz
Radio spectrum	2.4GHz 2402 MHz ~ 2484 MHz 5GHz 4900 MHz ~ 5925 MHz
Maximum transmission power	2.4GHz ≤ 20 dBm 5GHz(5.1~5.7) ≤ 20 dBm 5GHz(5.7~5.8) ≤ 14 dBm

4G

Radio technology	LTE(FDD): B1,B3,B7,B8,B20,B28A LTE(TDD): B38,B40
Radio spectrum	LTE Band 1: 1920 ~ 1980 MHz LTE Band 3: 1710 ~ 1785 MHz LTE Band 7: 2500 ~ 2570 MHz LTE Band 8: 880 ~ 915 MHz LTE Band 20: 832 ~ 862 MHz LTE Band 28A: 703 ~ 733 MHz LTE Band 38: 2570 ~ 2620 MHz LTE Band 40: 2300 ~ 2400 MHz
Maximum transmission power	23±2 dBm

The technical parameters listed above apply to EU countries only.

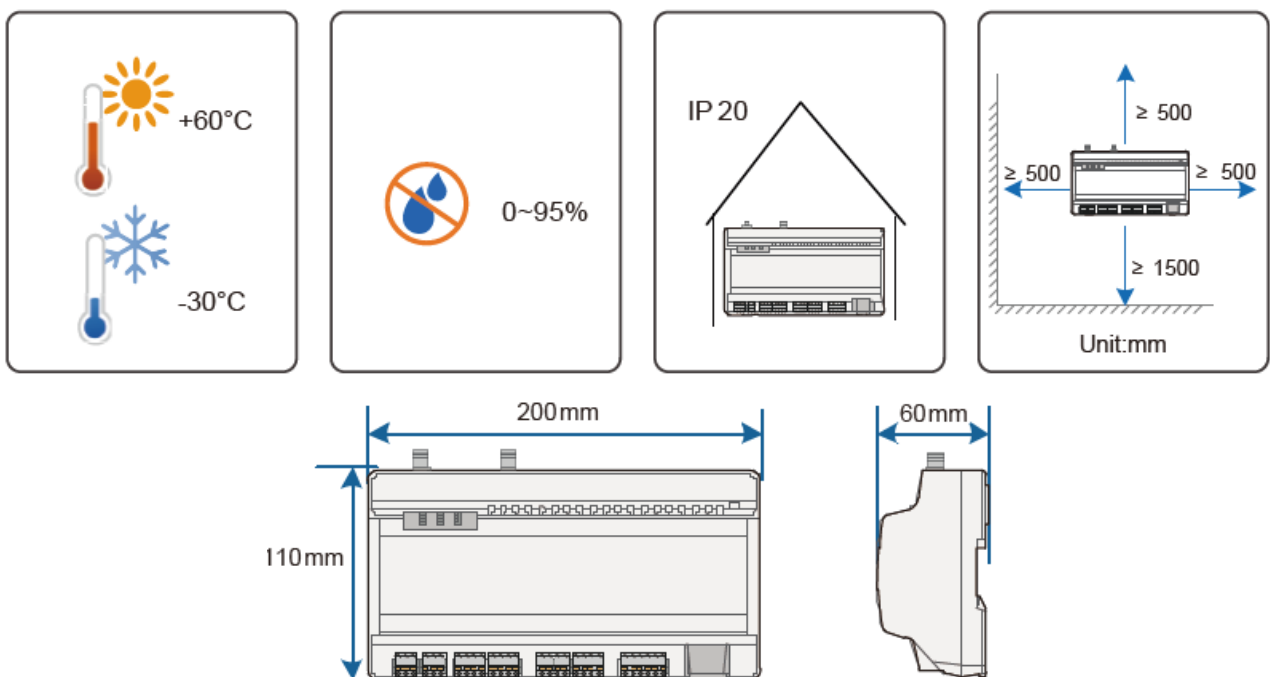
Typical Application



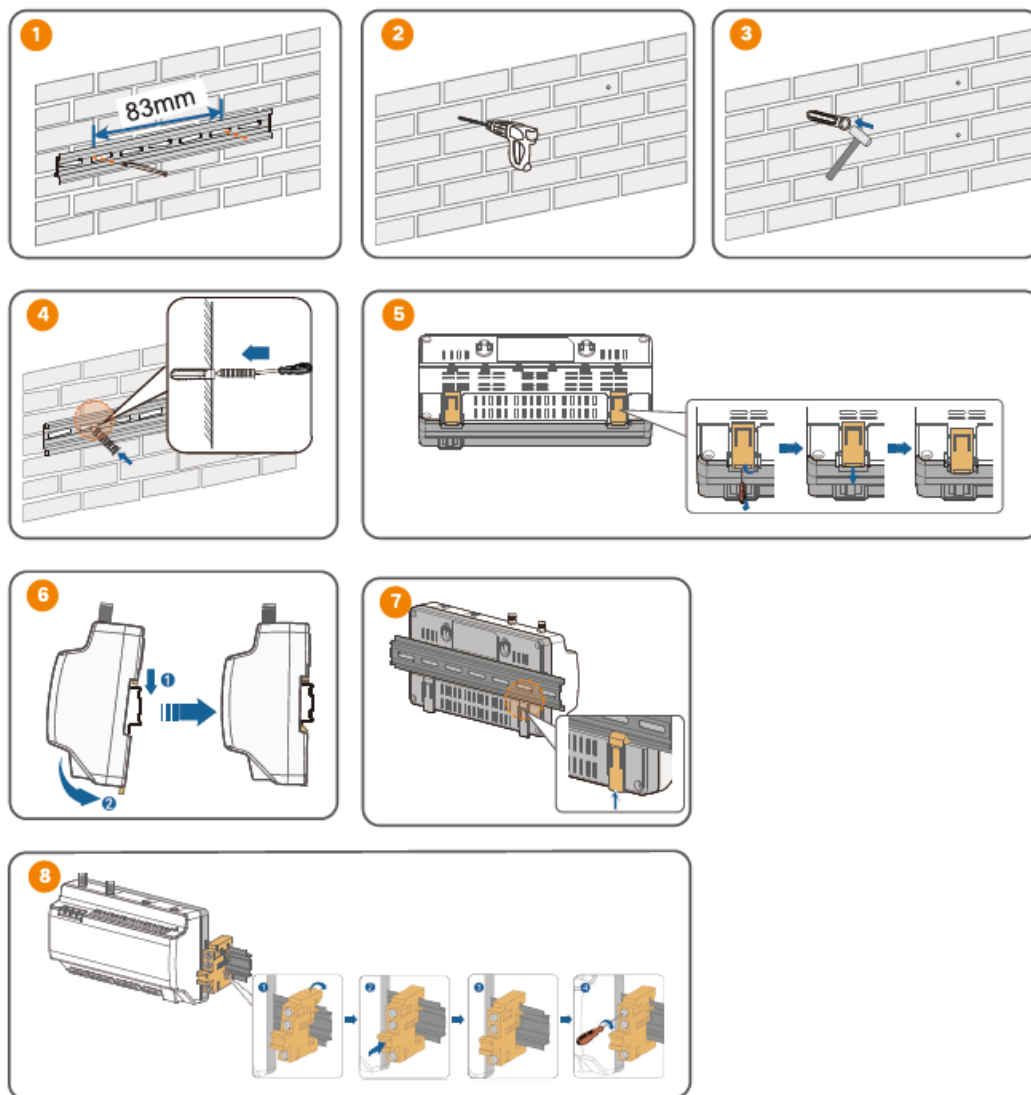
NOTICE The Logger1000 can be connected to iSolarCloud via any or a combination of Ethernet, WLAN, and 4 G.

Mechanical Installation

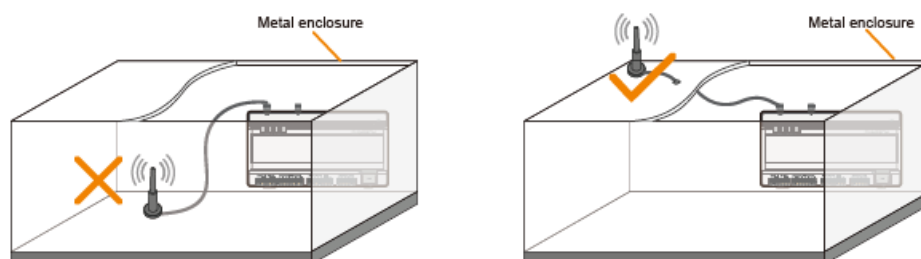
Installation Location





Guide Rail-Mounting



Installing Antenna



Installing Power Box

Port (print)	Function	Description
24V OUT	24V power output	24V±5%, the max. output current: 0.5A
DI	Converters AI into DI	Switch for enabling the AI/DI function
24V IN	24V power input	24V±3%
	Grounding	Connecting protective grounding cable
AI/DI	Analog input	Default AI input sampling: 0-10V or 4-20mA
DI	Digital input	Digital signal input
DRM	Demand Response Modes function	
0V	Digital reference point	
RS485	RS485 communication port	Support of 3 inputs of RS485
	SIM card slot	Support of Micro-SIM card
ETH	Ethernet port	Can be connected to background master via devices such as Ethernet switch and router
WLAN	WLAN antenna	
4G	4G antenna	
RST	Reset	Press and hold it for > 3s to restart. Press and hold it for > 60s to restore the default settings.

Tab. 3-2 Indicator description

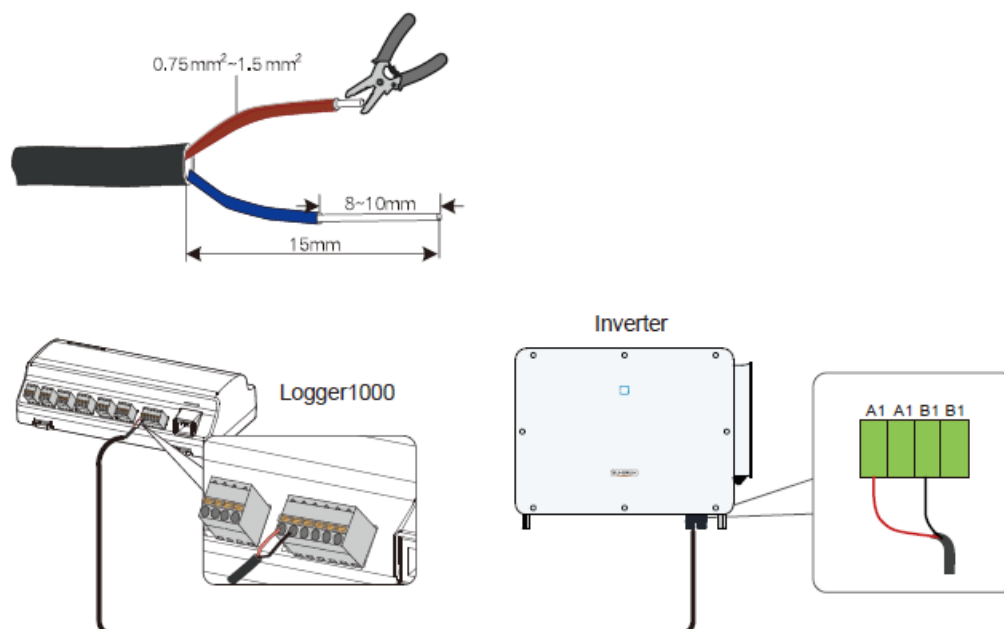
Indicator (print)	LED color	LED status	Description
Running indicator (RUN)	Red/green	Off	No external power supply connected
		Slow flash (Green)	Normal running
		Slow flash (Red)	Device alarm
		Steady on (Red)	Logger1000 running fault
4G indicator (4G)	Blue	Off	No data communication
		Steady on	4G connected successfully
		Slow flash	Data communication in process
WLAN indicator (WLAN)	Blue	Off	No data communication
		Steady on	WiFi connected successfully
		Slow flash	Data communication in process

Connection to PV Devices

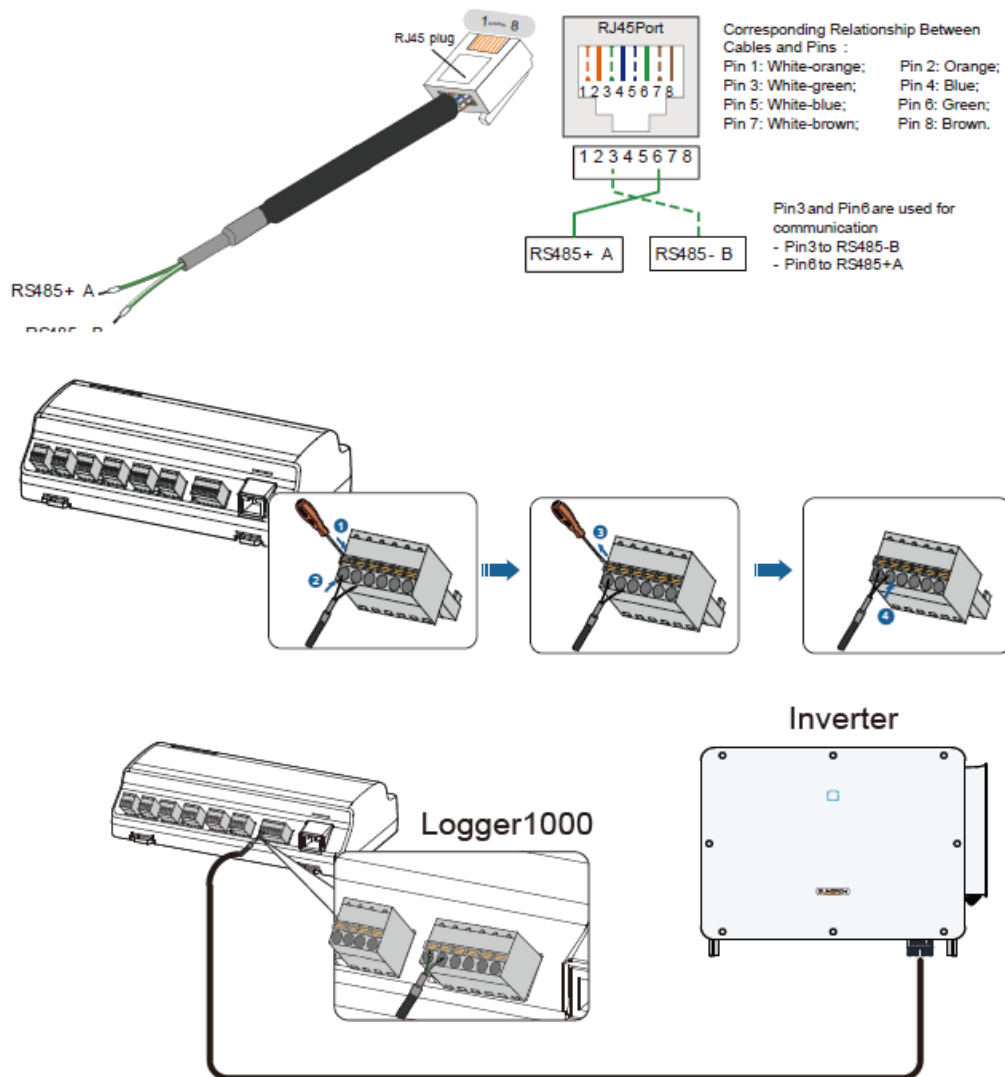
- Connection to a single inverter

The RS485 port of the SUNGROW inverter is an RS485 terminal block or an RJ45 port.

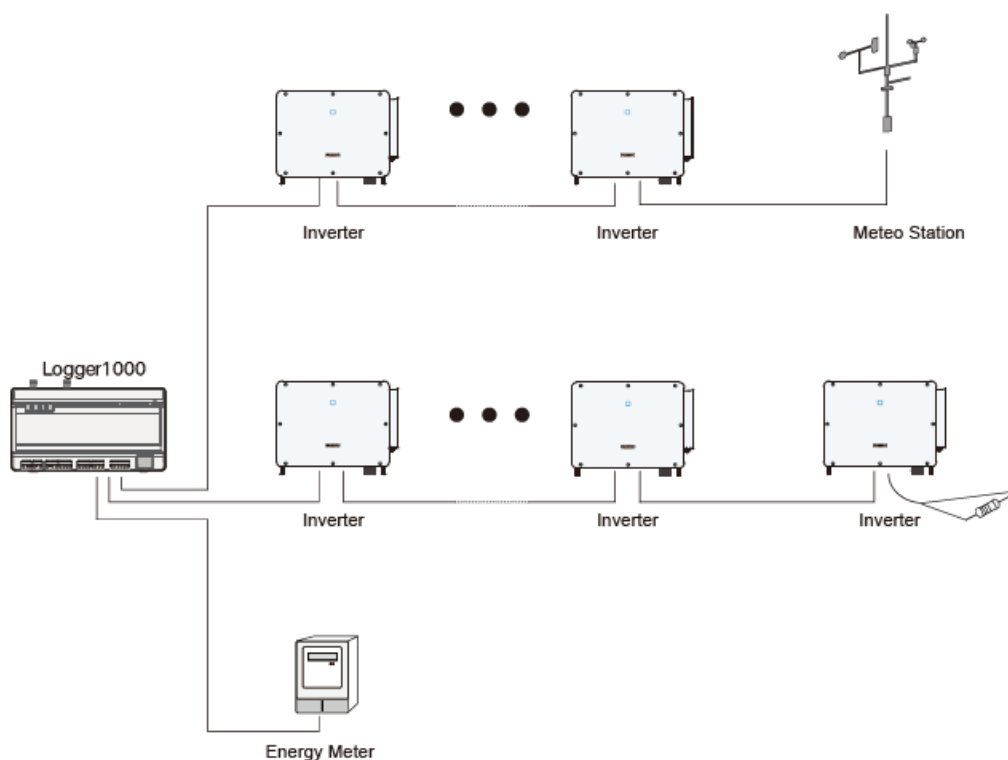
- RRS-485terminal block connection



- **RJ45 port connection**



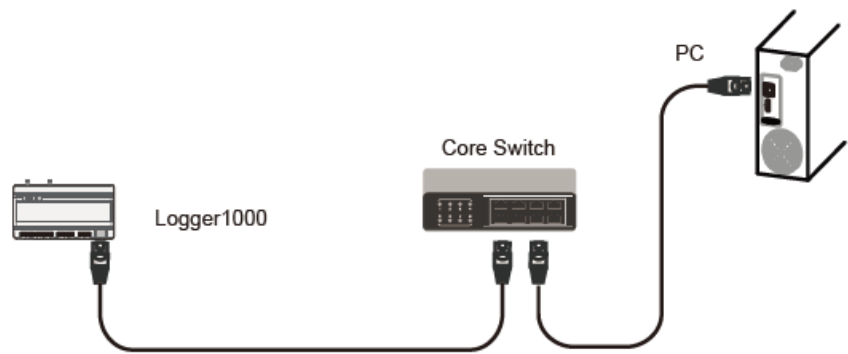
- **Connection to multiple devices**



NOTICE

- Multiple inverters are connected to the Logger1000 in the RS-485 daisy chain manner.
- If more than 15 inverters are connected on the RS485 bus, it is recommended to connect a 120Ω terminal resistor in parallel on the RS485A and RS485B lines at the head or tail end of the bus.
- When the number of device types is less than or equal to the number of RS-485 ports of Logger1000, it is recommended to connect different types of devices to different RS-485 ports separately.

Connection to Background



NOTICE

The default IP of the “ETH”:12.12.12.12.

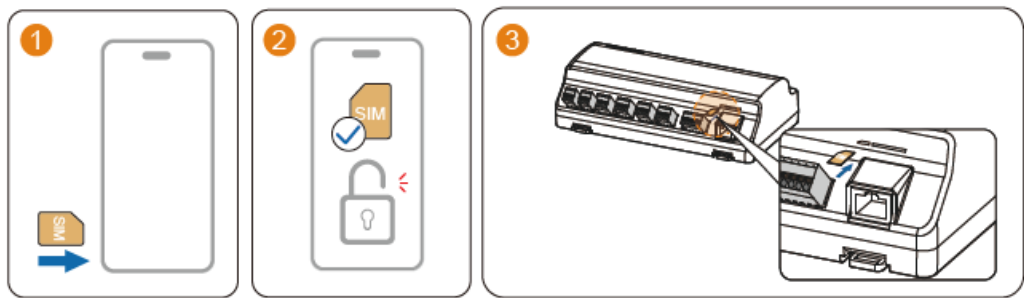
Connection to Micro-SIM

- Micro-SIM card size: 12mm × 15mm.
- Recommended SIM card provider: Telekom, Vodafone, T-Mobile, or O2.

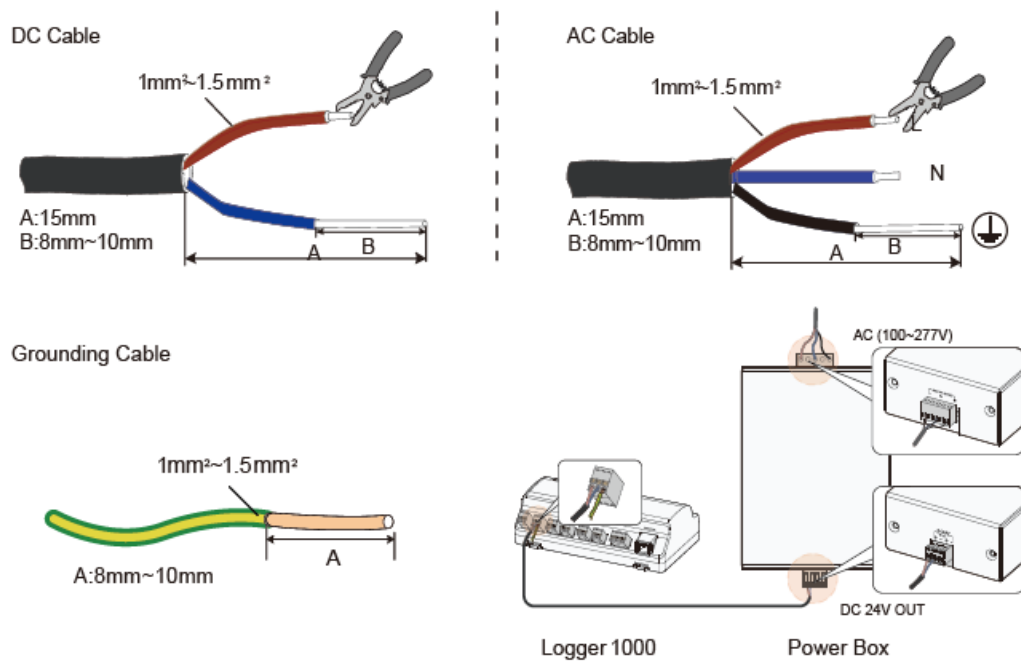
Device Connected	Monthly Data Required
Inverter	Number of inverters × 25 MB + 25 MB
Optimizer	Number of optimizers × 0.52 MB + 130 MB
Meter and meteo station	Number of meters and meteo stations × 12.5 MB + 12.5 MB

NOTICE

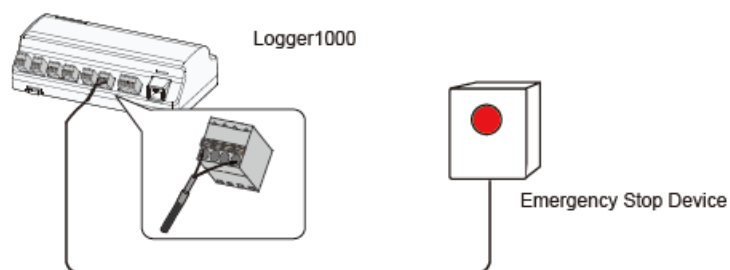
- Ensure that the SIM card has been properly configured for the monthly data plan.
- If using a nano-SIM card with an adapter, ensure that the nano-SIM is properly seated, and is correctly oriented to avoid improper insertion, difficulty in removing the SIM, or potential damage to the device.
- Micro-SIM card hot-plugging is supported.



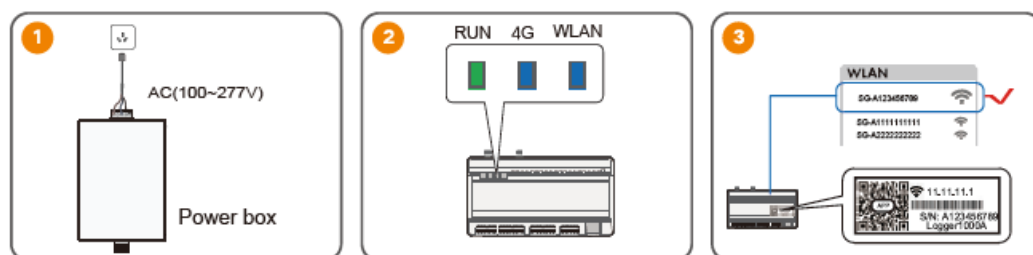
Connection to Power Box

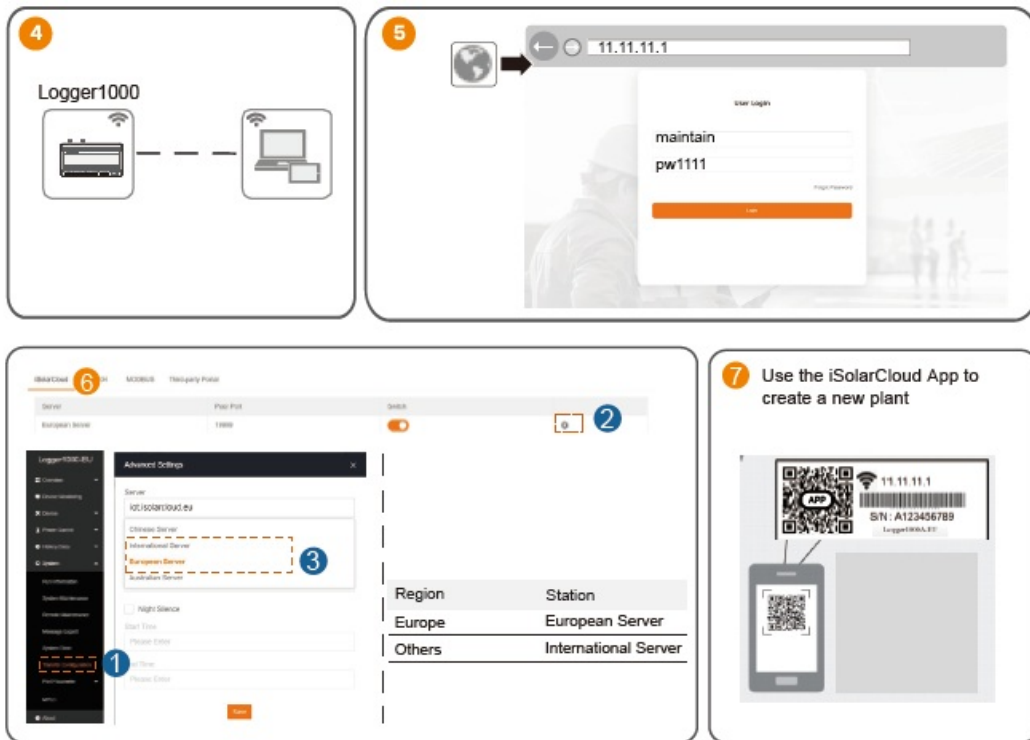


Connection to Emergency Stop Device



Commissioning





Safety Declaration

- Support for software updates: 2 years
- For details on the product's network security vulnerability response process and vulnerability disclosure, please scan the QR code on the right or visit the following website:

<https://en.sungrowpower.com/security-vulnerability-management>



Related documents

- User Manual of the iSolarCloud App



- More information in the QR code or at <http://support.sungrowpower.com>



Frequently Asked Questions


- **Q: Can the Logger1000A-EU be used in non-EU countries?**

A: The technical parameters listed are specified for EU countries only. Usage in non-EU countries may require different frequency bands and compliance certifications.



- **Q: How do I access the user manual for the Logger1000A-EU?**

A: Scan the QR Code at the bottom of the device to view or obtain the user manual for detailed instructions on installation and operation.

Documents / Resources

	<p>SUNGROW Logger1000A-EU Data Logger [pdf] Installation Guide 203747055, Logger1000A-EU-QIMUL-Ver15-202407, Logger1000A-EU Data Logger, Logger1000A-EU, Data Logger, Logger</p>
---	--

References

-  [Leading Solar Inverter and Energy Storage Solutions Provider - Sungrow US](#)
-  [Vulnerability Management | SUNGROW](#)
- [User Manual](#)

Manuals, [Privacy Policy](#)

This website is an independent publication and is neither affiliated with nor endorsed by any of the trademark owners. The "Bluetooth®" word mark and logos are registered trademarks owned by Bluetooth SIG, Inc. The "Wi-Fi®" word mark and logos are registered trademarks owned by the Wi-Fi Alliance. Any use of these marks on this website does not imply any affiliation with or endorsement.