

SUNGROW Logger 1000 Data Logger Smart Solar Installation Guide

September 24,
2024

[Home](#) » [SUNGROW](#) » **SUNGROW Logger 1000 Data Logger Smart Solar Installation Guide** 

Contents [[hide](#)]

- 1 [SUNGROW Logger 1000 Data Logger Smart Solar](#)
- 2 [Frequently Asked Questions](#)
- 3 [Validity](#)
- 4 [Safety](#)
- 5 [Typical Application](#)
- 6 [Mechanical Installation](#)
- 7 [Electrical Connection](#)
- 8 [Commissioning](#)
- 9 [Security Declaration](#)
- 10 [Related documents](#)
- 11 [Documents / Resources](#)
 - 11.1 [References](#)



SUNGROW Logger 1000 Data Logger Smart Solar



Frequently Asked Questions

Q: What should I do if I notice any damaged or missing components during installation?

A: Contact SUNGROW or the distributor immediately for assistance in replacing the damaged or missing parts.

Q: Can operations be performed by untrained personnel?

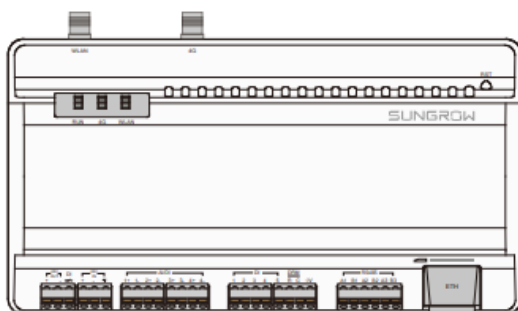
A: No, all operations should only be carried out by qualified personnel trained in electrical systems and safety protocols.

Validity

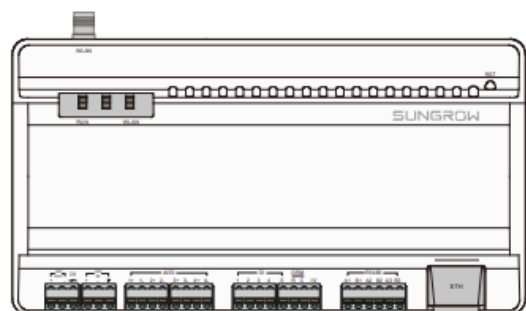
This manual is valid for the following data loggers.

- Logger1000A (4G version)
- Logger1000B (non-4G version)

The foregoing Loggers are referred to as the “Logger1000” for short unless otherwise specified.



Logger1000A



Logger1000B

Safety

1. Contents may be periodically updated or revised due to product development. The information in this guide is subject to change without notice. In no case shall this guide substitute for the user manual or related notes on the device.
2. Make sure to read over, fully understand and strictly follow the detailed instructions of the user manual and other related regulations. Scan the bottom QR Code of the cover to view or obtain the user manual.
3. All operations can be performed only by qualified personnel, that must be trained in the installation and commissioning of the electrical system, as well as the dealing with hazards, have knowledge of the manual and of the local regulations and directives.
4. Before installation, check that the package contents are intact and complete against the packing list. Contact SUNGROW or the distributor in case of any damaged or missing components.
5. The cable must be intact and well-insulated. Operation personnel must wear proper personal protective equipment (PPE) all the time.
6. Any violation could result in personal death or injury or device damage, and will void the warranty.

EU Declaration of Conformity within the scope of the EU directives

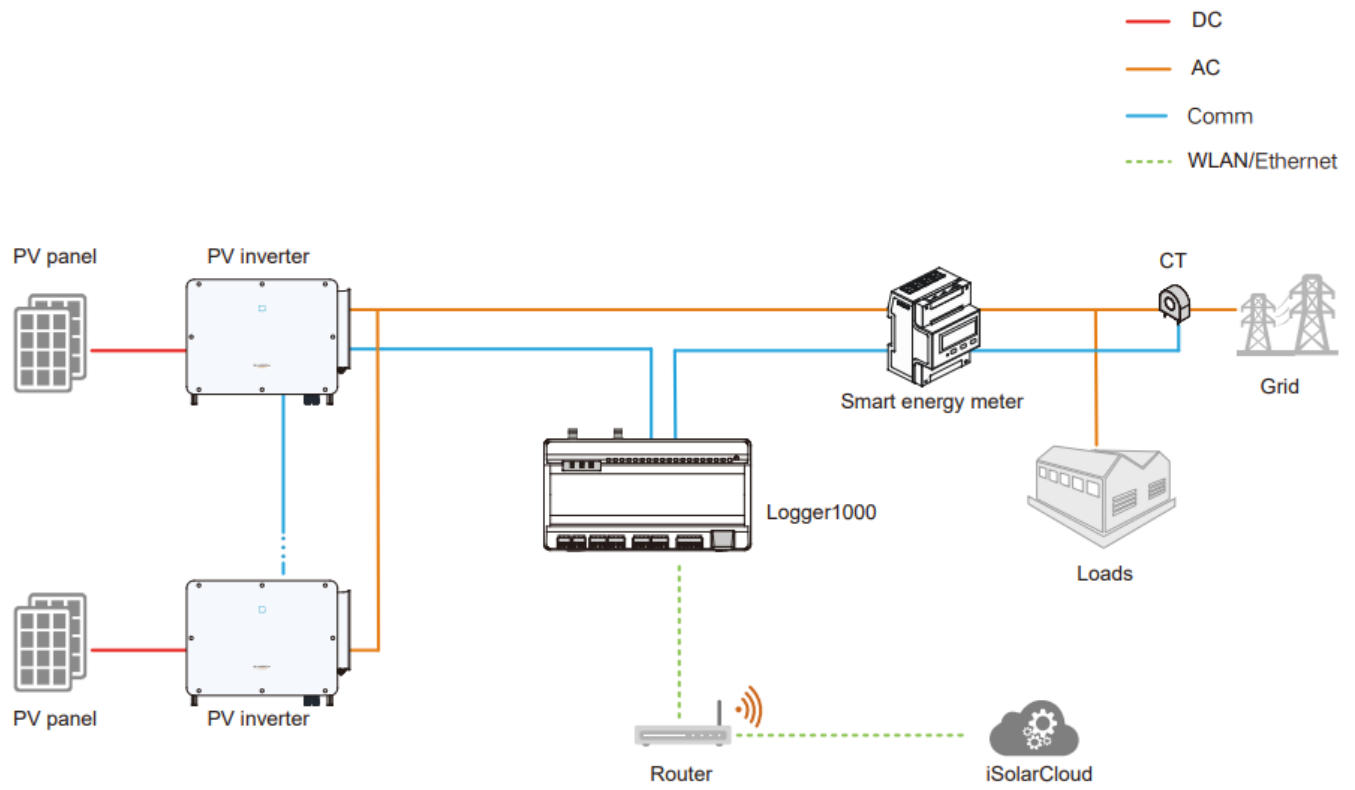
- Restriction of the use of certain hazardous substances 2011/65/EU and 2015/863/EU (RoHS)
- The Radio Equipment Directive 2014/53/EU (RED)

SUNGROW confirms herewith that the products described in this document are in compliance with the fundamental requirements and other relevant provisions of the abovementioned directives. The entire EU Declaration of Conformity can be found at support.sungrowpower.com.

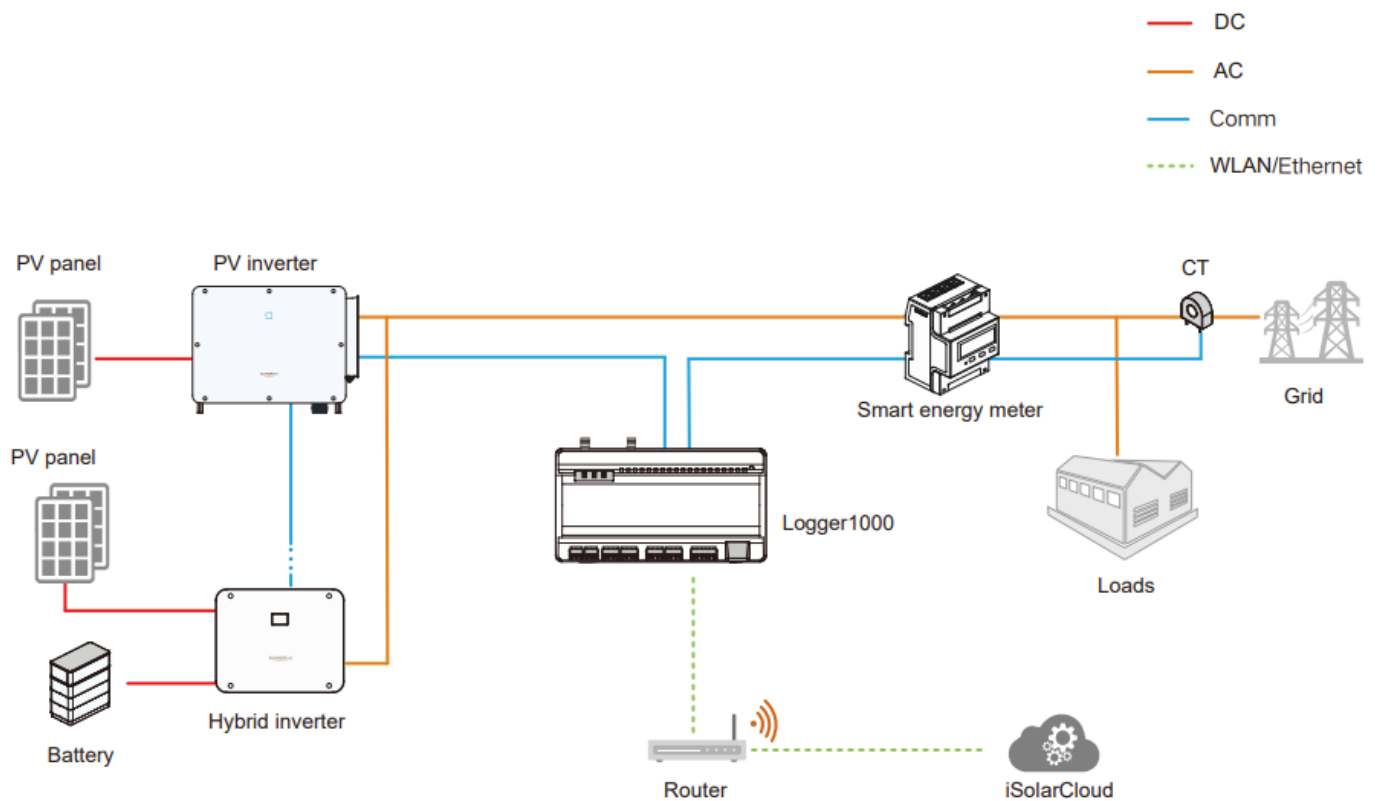
Technical parameters listed above apply to EU countries only.

Typical Application

PV System

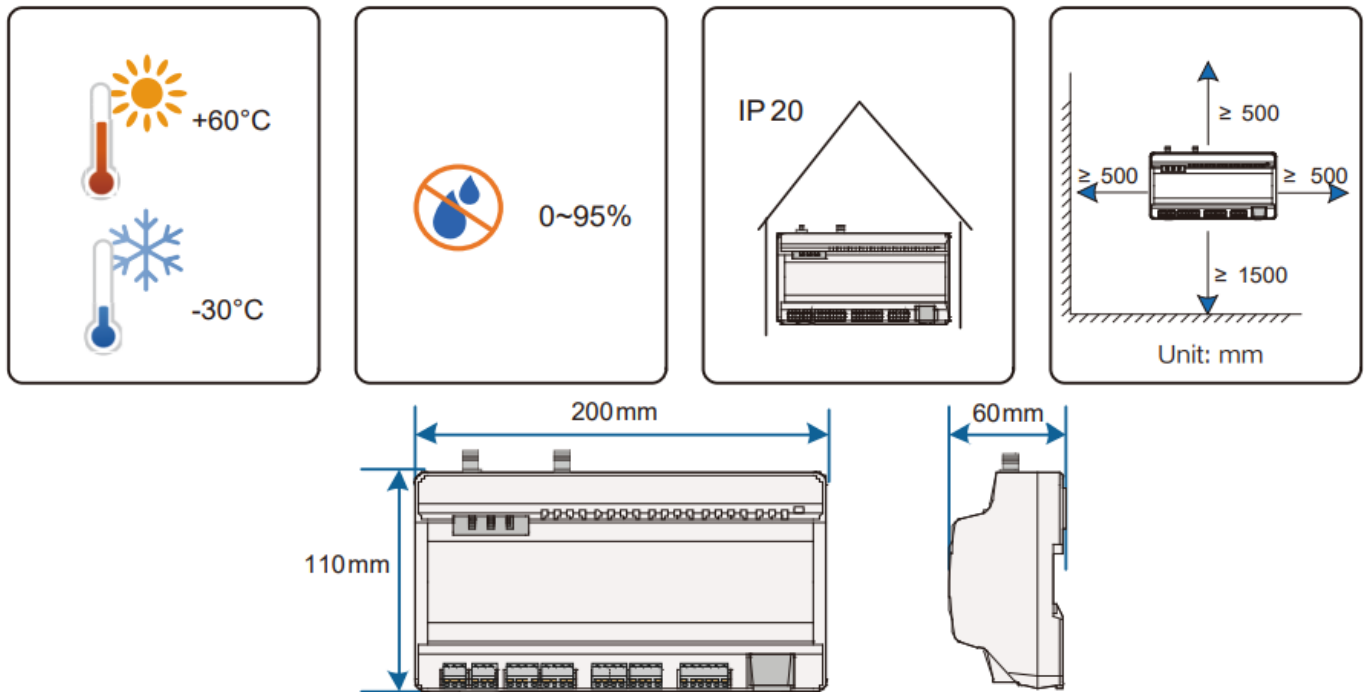


Energy Storage System

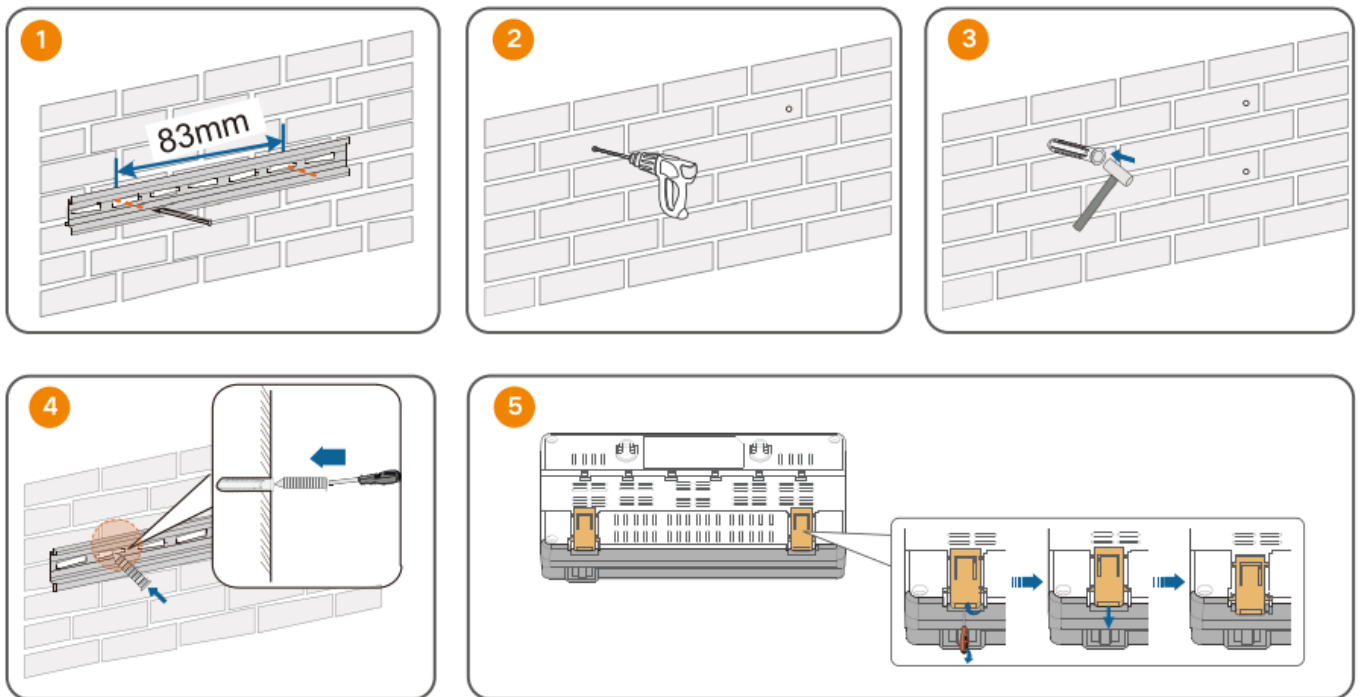


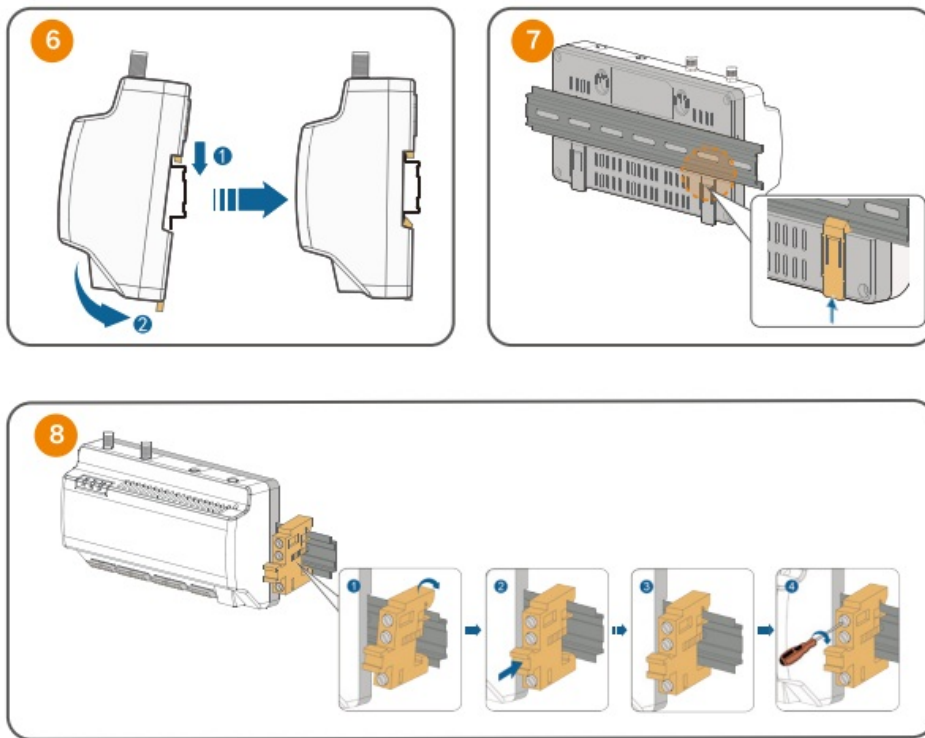
Mechanical Installation

Installation Location

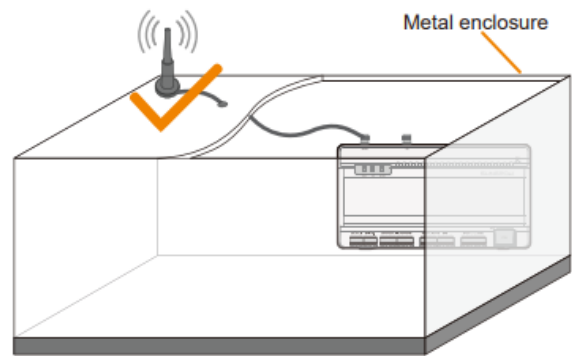
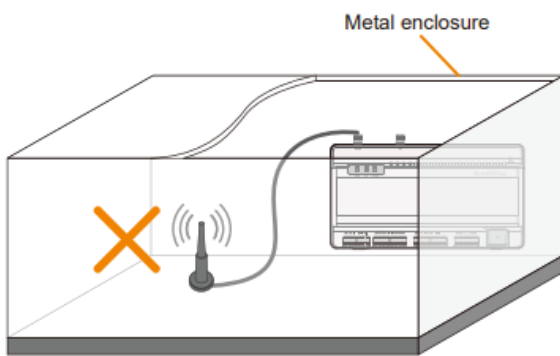


Guide Rail-Mounting







Installing Antenna



Installing Power Box

DI	Converters AI into DI	Switch for enabling the AI/DI function
24V IN	24V power input	24V±3%
	Grounding	Connecting protective grounding cable
AI/DI	Analog input	Default AI input sampling: 0-10V or 4-20mA
DI	Digital input	Digital signal input
DRM	Demand Response Modes function	—
0V	Digital reference point	—
RS485	RS485 communication port	Support of 3 inputs of RS485
	SIM card slot	Support of Micro-SIM card
ETH	Ethernet port	Can be connected to background master via devices such as Ethernet switch and router
WLAN	WLAN antenna	
4G*	4G antenna	
RST	Reset	Press and hold it for > 3s to restart. Press and hold it for > 60s to restore the default settings.

Note: *Only the Logger1000A is equipped with the SIM card slot and the 4G function.

Indicator description

Tab. 3-2 Indicator description			
Indicator (print)	LED color	LED status	Description
		Off	No external power supply connected
		Slow flash (Green)	Normal running
Running indicator (RUN)	Red/green	Slow flash (Red)	Device alarm
		Steady on (Red)	Logger1000 running fault
		Off	No data communication
4G indicator (4G)*	Blue	Steady on	4G connected successfully
		Slow flash	Data communication in process
		Off	No data communication
WLAN indicator (WLAN)	Blue	Steady on	WiFi connected successfully
		Slow flash	Data communication in process

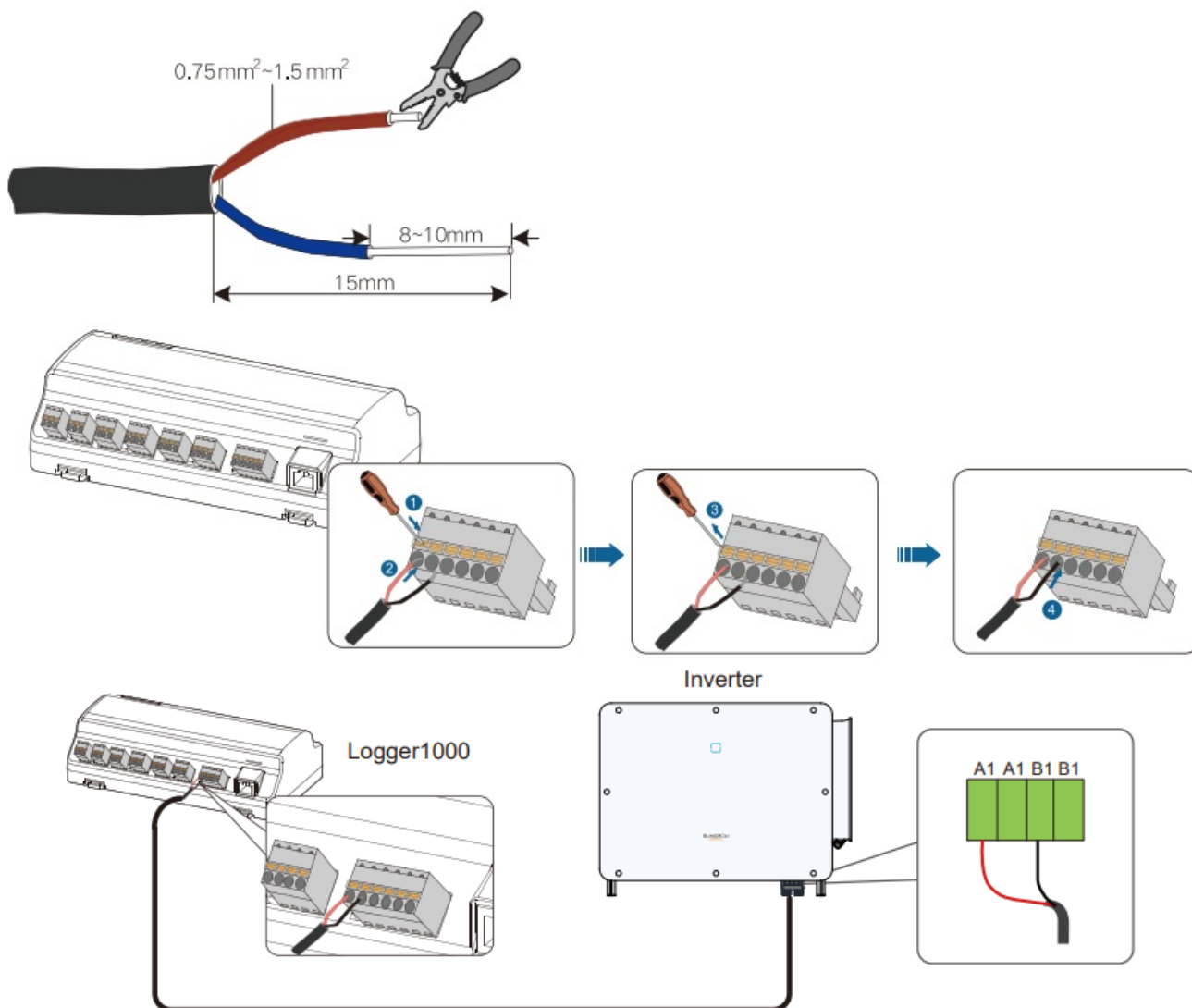
Note: * Only the Logger1000A is equipped with the 4G indicator.

Connection to PV Devices

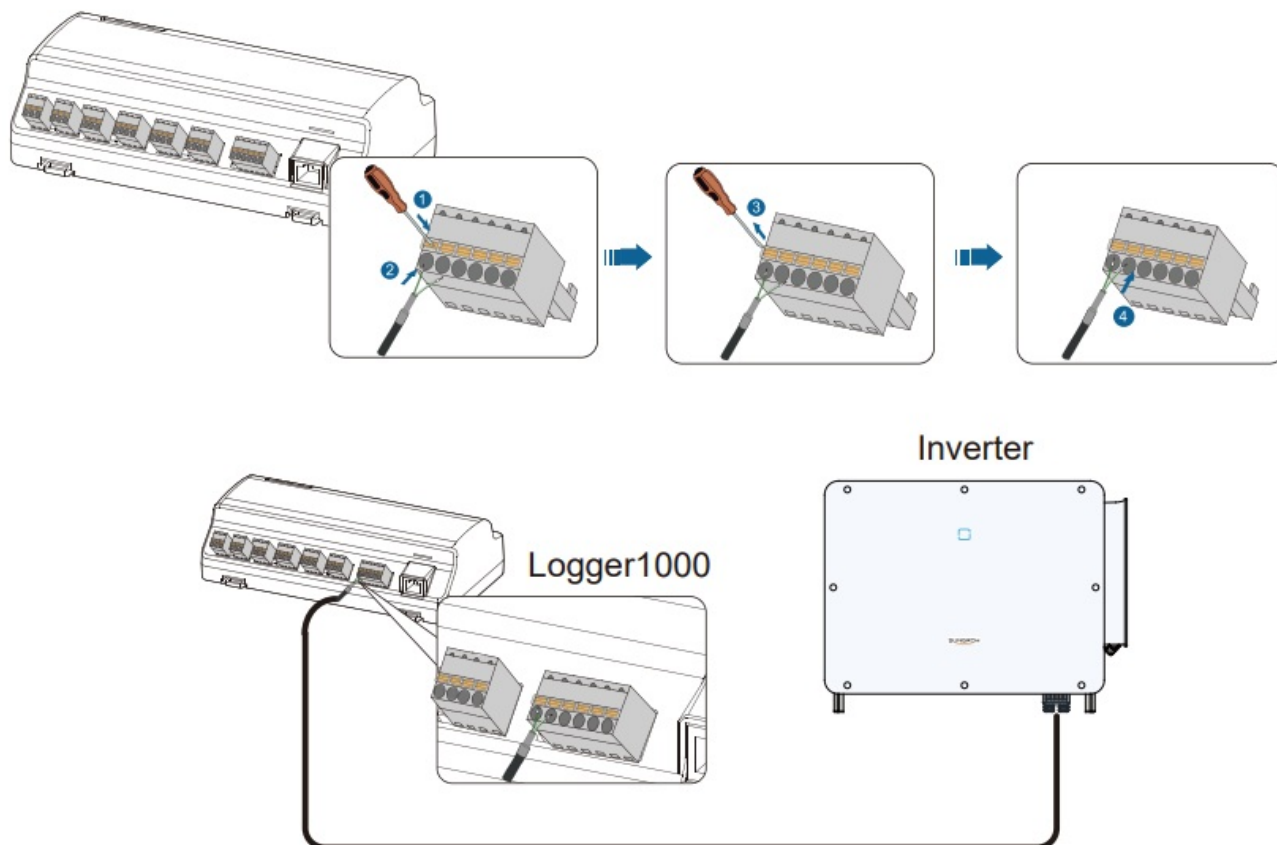
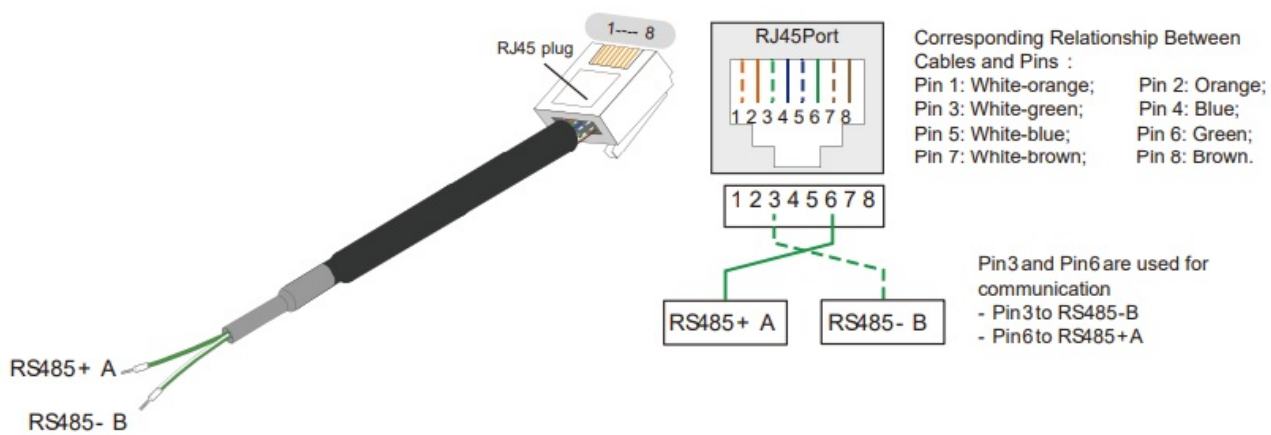
- Connection to a single inverter

The RS485 port of SUNGROW inverter is RS485 terminal block or RJ45 port.

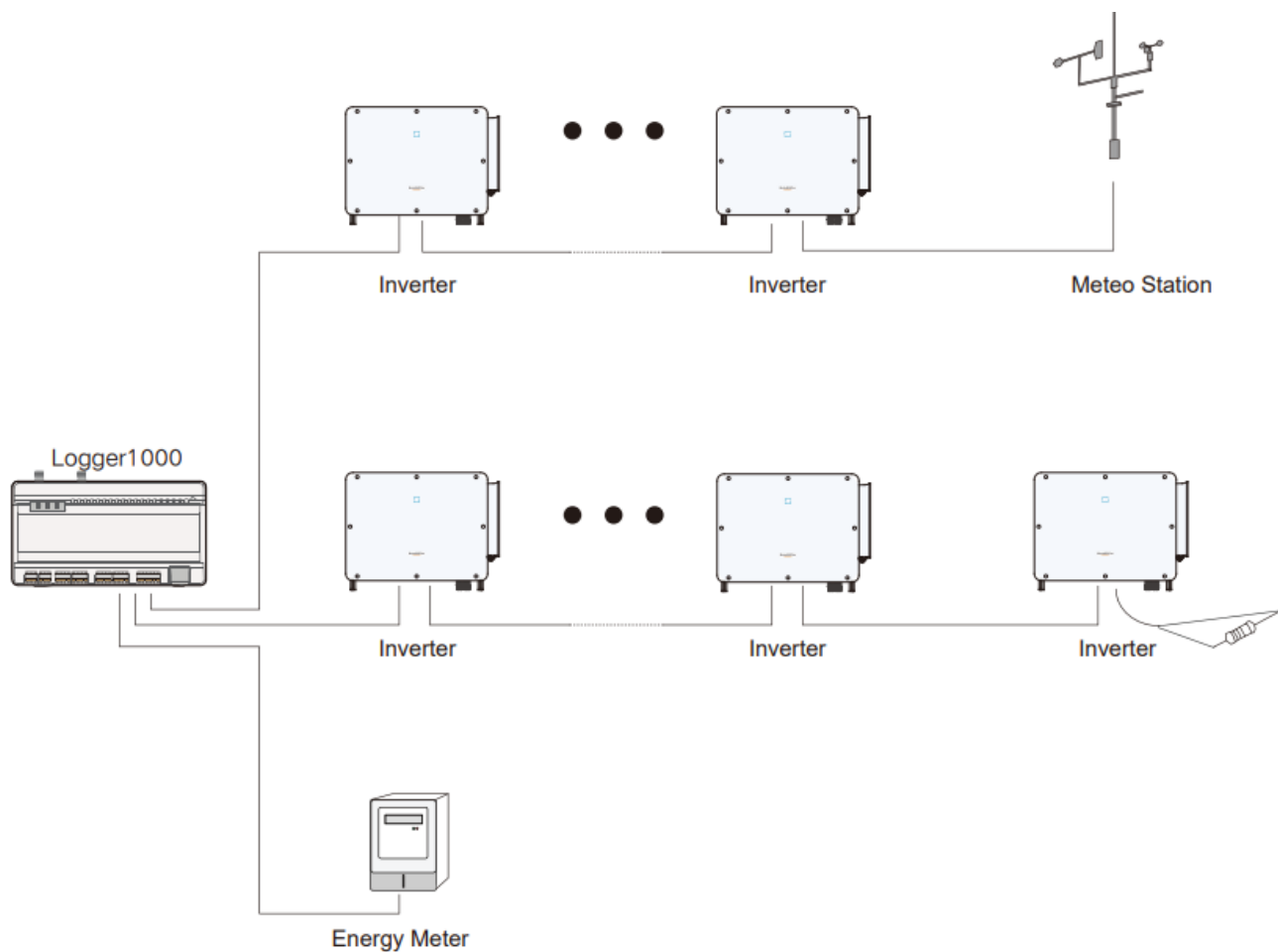
- RS485 terminal block connection



RJ45 port connection



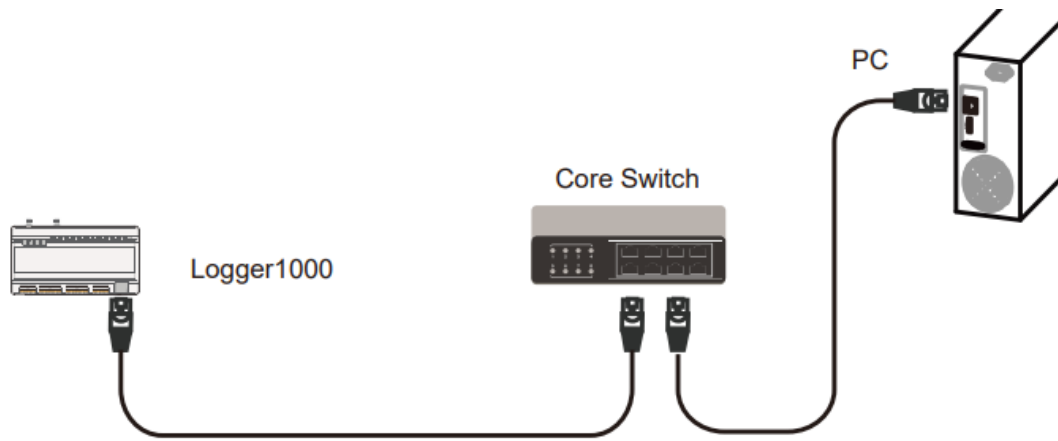
Connection to multiple devices



NOTICE

- Multiple inverters are connected to the Logger1000 in the RS485 daisy chain manner.
- If more than 15 inverters are connected on the RS485 bus, it is recommended to connect a 120Ω terminal resistor in parallel on the RS485A and RS485B lines at the head or tail end of the bus.
- When the number of device types is less than or equal to the number of RS485 ports of Logger1000, it is recommended to connect different types of devices to different RS485 ports separately.

Connection to Background

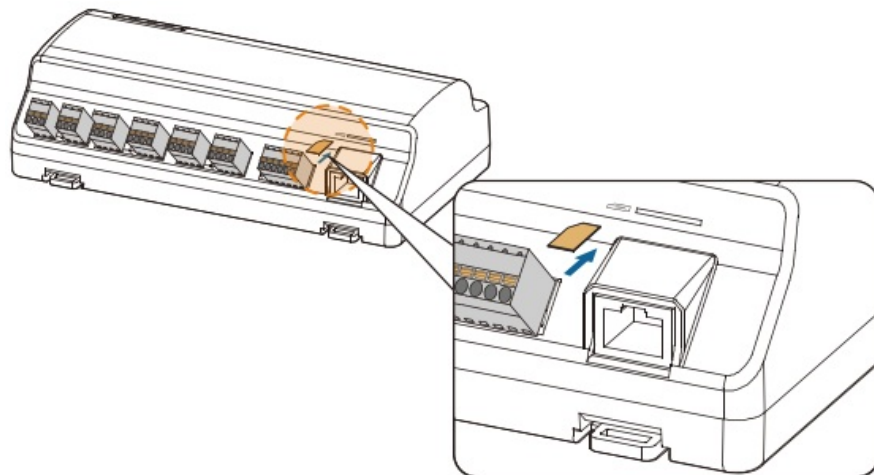


NOTICE

Default IP address of the “ETH”: 12.12.12.12.

Connection to Micro-SIM/ Verbindung zur Micro-SIM

Micro-SIM card size: 12mm × 15mm.

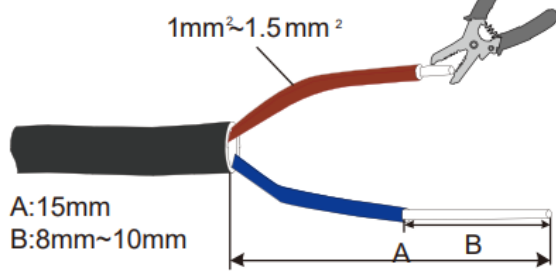


NOTICE

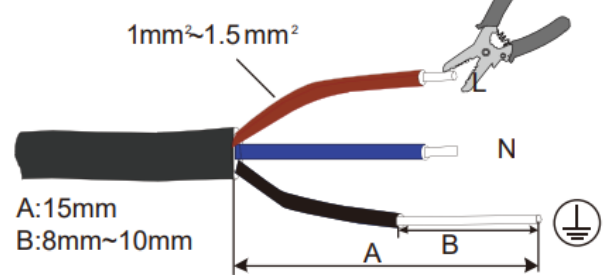
Micro-SIM card hot-plugging is supported.

Connection to Power Box

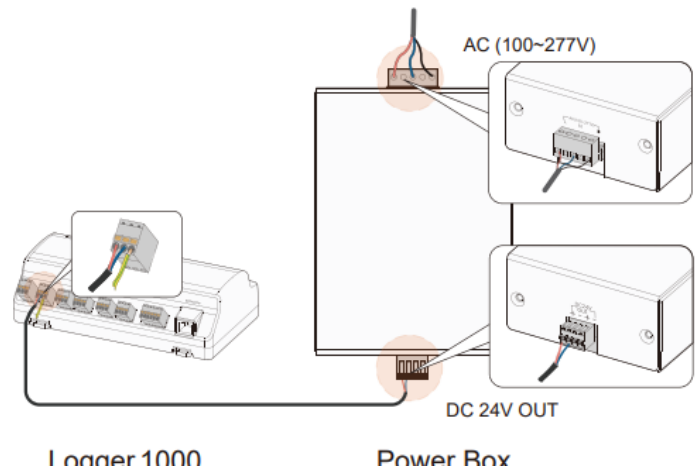
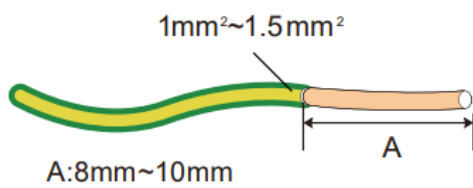
DC Cable



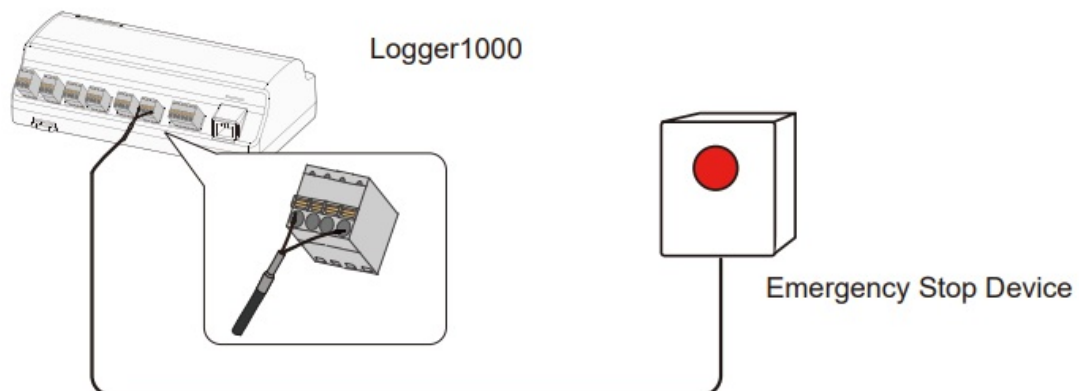
AC Cable



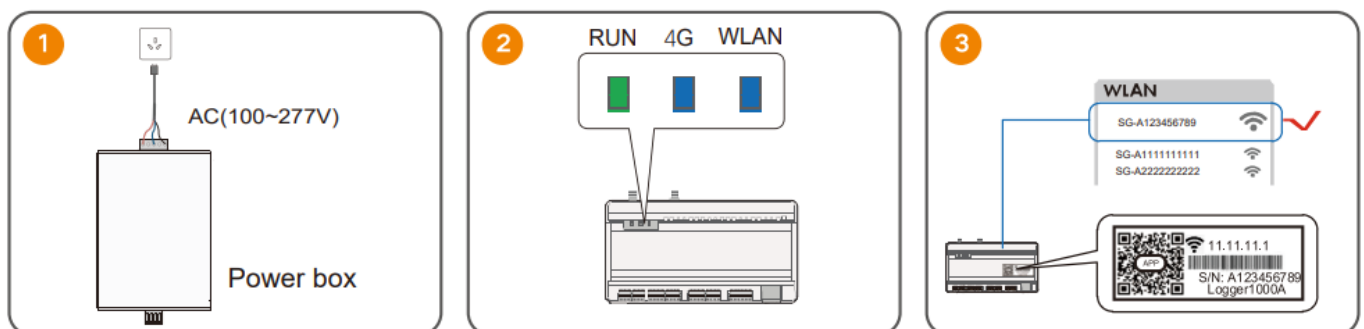
Grounding Cable

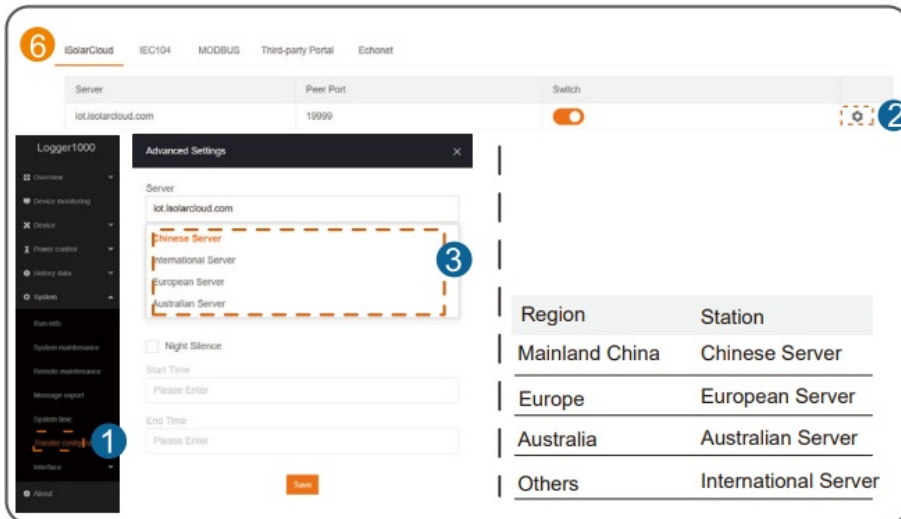
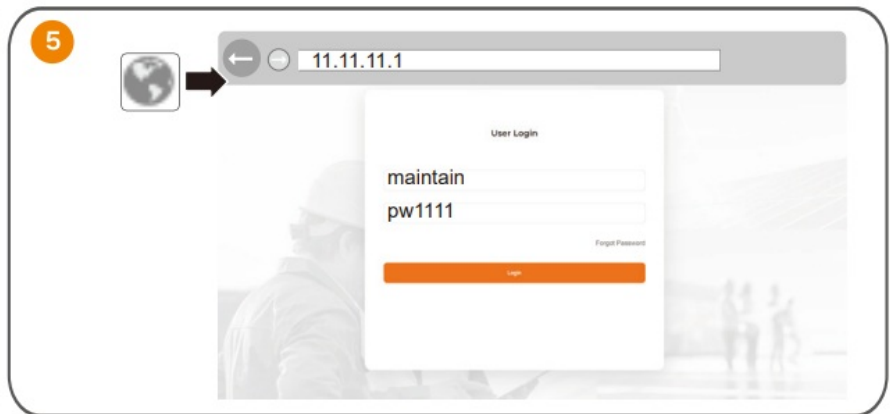
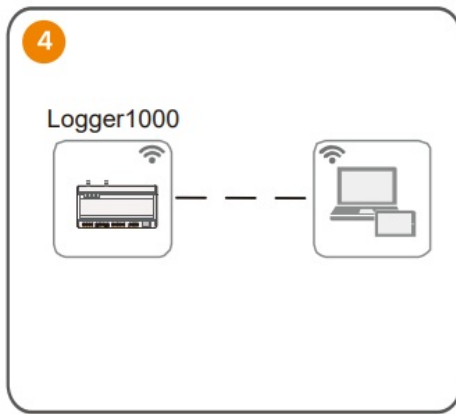


Connection to Emergency Stop Device



Commissioning





Security Declaration

- Support for software updates: 2 years
- For details on the product's network security vulnerability response process and vulnerability disclosure, please scan the QR code on the right or visit the following website:

<https://en.sungrowpower.com/security-vulnerability-management>



Related documents

User Manual of iSolarCloud App




More information in the QR code or at <http://support.sungrowpower.com>



Sungrow Power Supply Co., Ltd.

www.sungrowpower.com

Documents / Resources

	SUNGROW Logger 1000 Data Logger Smart Solar [pdf] Installation Guide e Logger1000A, Logger1000B, Logger 1000 Data Logger Smart Solar, Logger 1000, Data Logger Smart Solar, Logger Smart Solar, Smart Solar, Solar
---	--

References

- support.sungrowpower.com
- [Leading Solar Inverter and Energy Storage Solutions Provider - Sungrow US](#)
- [Vulnerability Management | SUNGROW](#)
- [User Manual](#)

■ SUNGROW

◆ Data Logger Smart Solar, Logger 1000, Logger 1000 Data Logger Smart Solar, Logger Smart Solar, Logger1000A, Logger1000B, Smart Solar, Solar, SUNGROW

—Previous Post

SUNGROW SG2.0RS-S G3 5kW Single Phase Inverter Installation Guide

Leave a comment

Your email address will not be published. Required fields are marked *

Comment *

Name

Email

Website

☐ Save my name, email, and website in this browser for the next time I comment.

Post Comment

Search

Search

@manualsplus YouTube

Manuals+, Privacy Policy

This website is an independent publication and is neither affiliated with nor endorsed by any of the trademark owners. The "Bluetooth®" word mark and logos are registered trademarks owned by Bluetooth SIG, Inc. The "Wi-Fi®" word mark and logos are registered trademarks owned by the Wi-Fi Alliance. Any use of these marks on this website does not imply any affiliation with or endorsement.