



# SUNFORCE 80033 Solar String Light with Remote Control Instruction Manual

[Home](#) » [SunForce](#) » SUNFORCE 80033 Solar String Light with Remote Control Instruction Manual 

## Contents

- [1 SUNFORCE 80033 Solar String Light with Remote Control](#)
- [2 PACKAGE CONTENT](#)
- [3 SAFETY INFORMATION](#)
- [4 BATTERY INSTRUCTIONS](#)
- [5 PRODUCT FEATURES](#)
- [6 PRE-INSTALLATION](#)
- [7 MOUNTING](#)
- [8 INSTALLATION](#)
- [9 OPERATION](#)
- [10 CONTACT](#)
- [11 Documents / Resources](#)

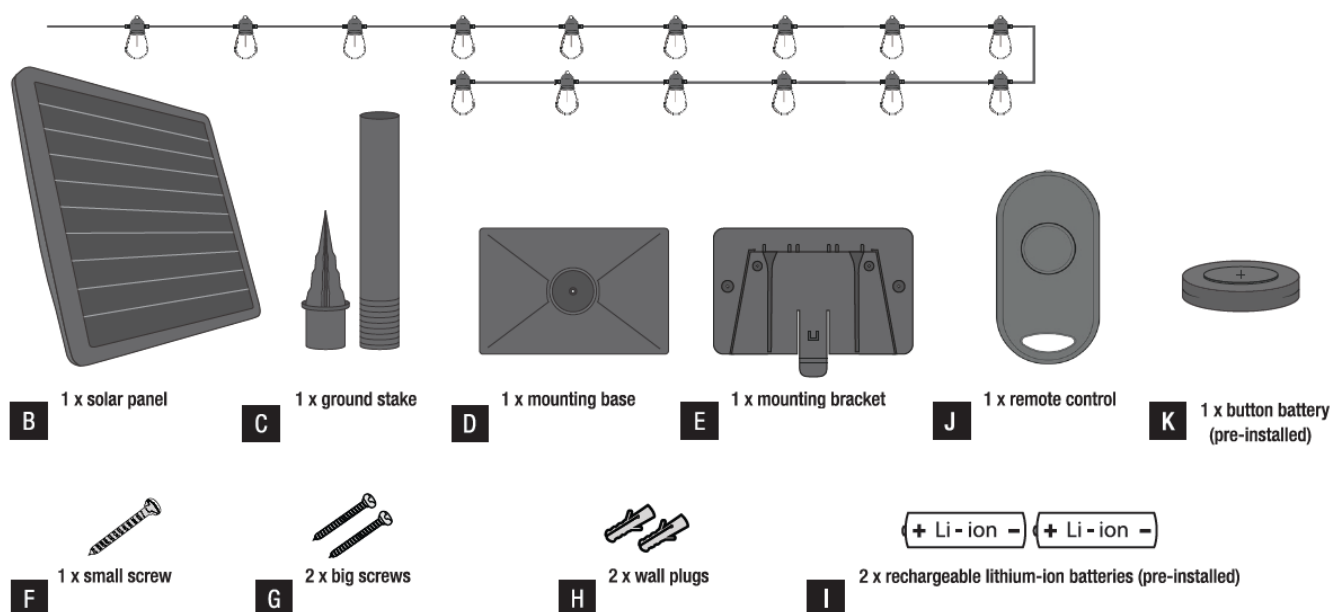


**SUNFORCE 80033 Solar String Light with Remote Control**



## PACKAGE CONTENT

### A. 15 LED Bulbs



**WARNING:** Prior to hanging the bulbs, make sure they do not rest upon any hot surface or where they could become damaged. If you are charging the batteries without attaching the bulbs, keep the bulbs in the retail box or safely store them indoors to prevent any potential damage.

## SAFETY INFORMATION

### CAUTIONS: SAFETY INFORMATION

- Your solar string lights are not a toy. Keep them out of reach of small children.
- Your solar string lights and solar panel are both fully weather-resistant.
- The solar panel must be mounted outdoors to maximize sun exposure.
- Prior to installation, lay out all components and check against the parts list section of this manual.
- Never look directly into the solar string lights.
- Do not hang any other objects on the solar string lights.
- Do not cut the wire or make any wiring changes to the solar string lights.

## BATTERY INSTRUCTIONS

### CAUTIONS: BATTERY INSTRUCTIONS

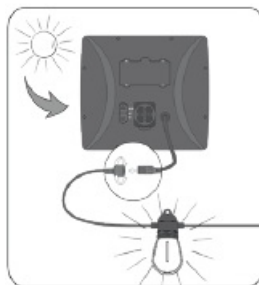
- WARNING – KEEP BATTERIES OUT OF REACH OF CHILDREN.
- Always purchase the correct size and grade of battery most suitable for the intended use.
- Always replace the whole set of batteries at one time, taking care not to mix old and new ones, or batteries of different types.
- Clean the battery contacts and also those of the device prior to the battery installation.
- Ensure the batteries are installed correctly with regard to polarity (+ and -).
- Remove batteries from equipment which are not to be used for an extended period of time.
- Remove any defective or 'dead' batteries immediately and replace.
- For recycling and disposal of batteries to protect the environment, please check the internet or your local phone directory for local recycling centers and/or follow local government regulations.
- For more information on battery housing and location, refer to Step 7 on page 4.

### PRODUCT FEATURES

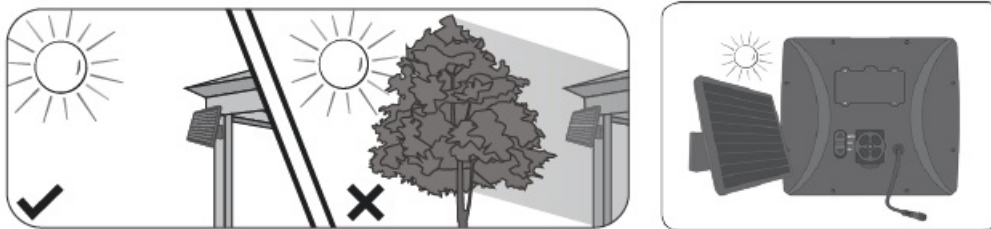
- Vintage looking Edison LED light bulbs (E26 base)
- Integrated mounting loops
- Solar battery charging
- Remote control included
- 10.67 m / 35 ft total cable length
- 3V, 0.3W LED replaceable bulbs

### PRE-INSTALLATION

1. The bulbs for the string lights may be packed separately. Remove the bulbs carefully from the box and insert into the string sockets. Screw tight to ensure a proper connection.



- **a)** Connect the solar panel to the connector on the string lights.
  - **b)** Select ON on the back of the solar panel.
  - **c)** The bulbs should now illuminate. Once the bulbs are all illuminated, turn the switch to OFF and continue with the installation.
2. Ensure your solar panel is placed so that its exposure to sunlight is optimized. Be aware of objects such as trees or property overhangs that may impede the panel's ability to generate a charge



3. Prior to using your solar string lights, the solar panel needs sunlight for a period of three days. This initial charge should be done without the string lights connected or with the solar panel in the OFF position. After the third day, your included batteries will be fully charged.

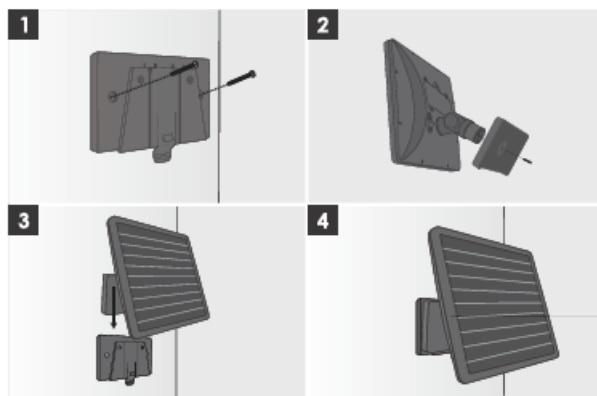
- **Note:** The solar panel should be mounted in a place where the ON/OFF switch is easily accessible.

## MOUNTING

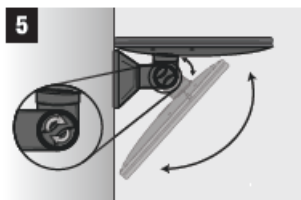
### MOUNTING THE SOLAR PANEL: THE SOLAR PANEL HAS TWO MOUNTING OPTIONS

#### MOUNTING BRACKET

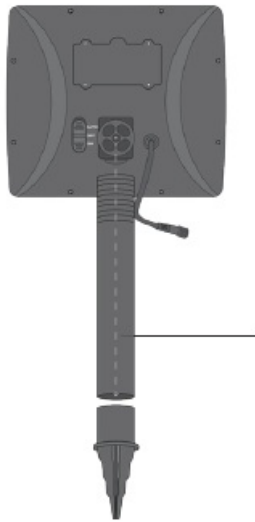
1. If required use the two wall plugs (H) along with the two large screws (G). Install the screws utilizing the two outer holes of the mounting bracket to secure the bracket to the chosen surface.
2. Insert the mounting base (D) onto the back of the solar panel (B). Use the included small screw (F) to tighten the connection.
3. Slide the solar panel down onto the mounting bracket (E) until you feel and hear the connection click into place.
4. Adjust the solar panel to the desired angle to optimize sun exposure.



5. The angle of the solar panel can be adjusted to maximize sun exposure by loosening, adjusting and then re-tightening the side screw located on the solar panel's protruding arm.

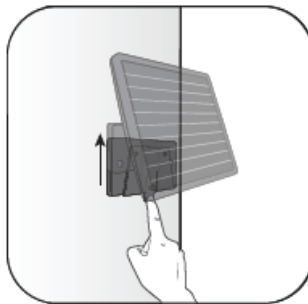


- **Note:** To disconnect the solar panel from the mounting bracket, press down on the release tab on the bottom of the mounting bracket. With the tab firmly pressed, slide the solar panel upwards and free of the bracket. Some force may be required to remove the panel from the bracket.



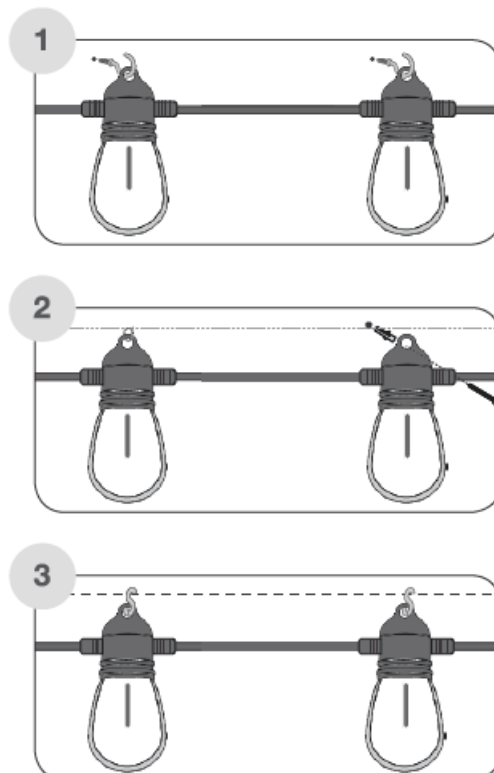
- **GROUND STAKE**

To utilize the ground stake (C), connect the two parts of the stake together. The grooved section then fits into the protruding arm of the solar panel. The stake can then be used to mount the panel into the ground.



## INSTALLATION

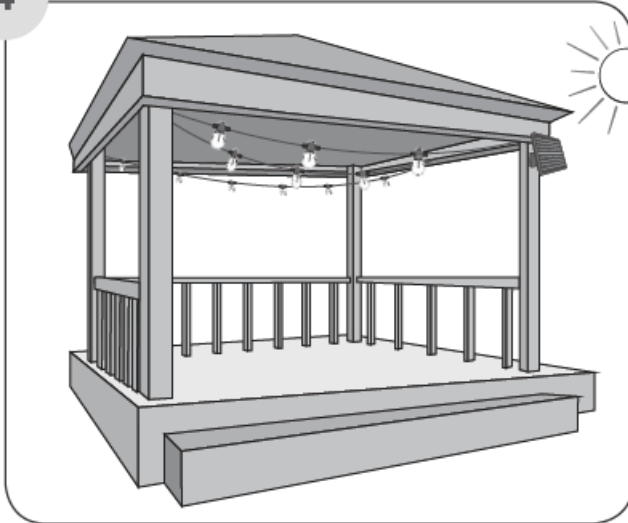
### INSTALLATION OF THE SOLAR STRING LIGHTS



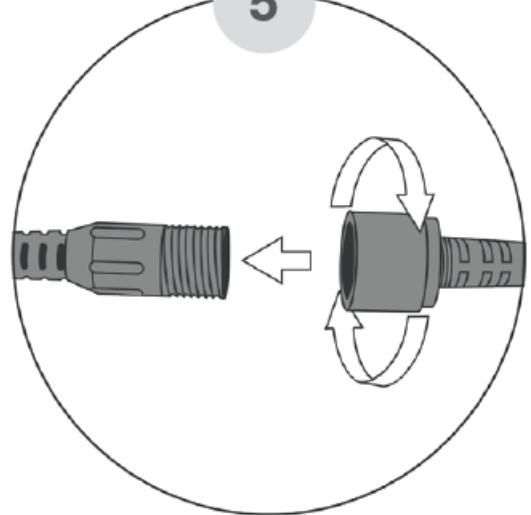
The solar string lights have a variety of possible ways to be mounted. The following are examples of the most common ways:

1. **Temporary mounting:** Using standard S hooks (not included) or screw hooks (not included) the solar string lights can be mounted utilizing the integrated mounting loops.
2. **Permanent mounting:** Using cable tie wraps or 'zip ties' (not included) or using nails or screws into a surface, the solar string lights can be mounted more permanently.
3. **Guide wire installation:** Using S hooks (not included) attach the string lights to a pre-installed guide wire (not included).
4. **Structural installation:** To create a draping effect for the solar string lights attach the first bulb to a structure, then only mount every 3-4th bulb to create the desired effect. Complete the effect by mounting the last bulb to a structure.
5. The final step of installation is to connect the solar panel to the string lights. Simply insert the plug located after the final bulb into the wire coming from the solar panel. Tighten the plug by screwing the seal over the connection point.

4

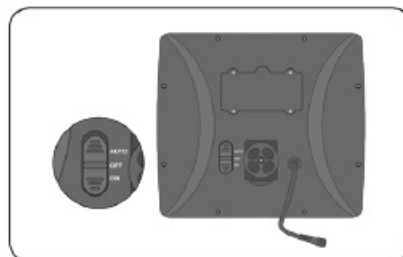
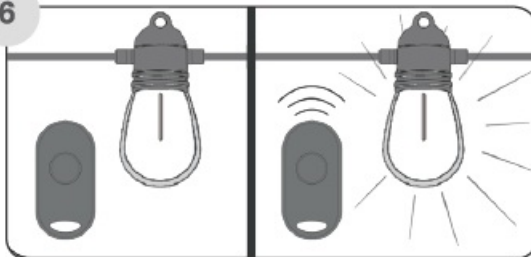


5



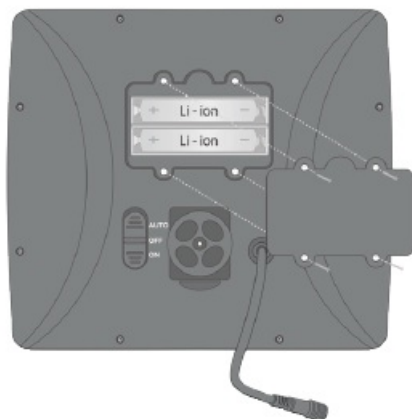
## OPERATION

6

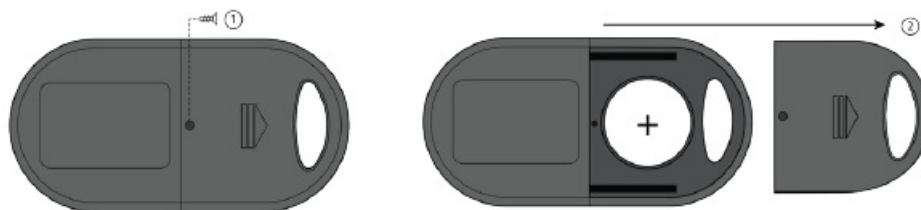


After an initial 3 day charge in the OFF position the solar string lights are ready to use. Pull out the included plastic tab to activate the remote control's (J) battery. When the solar panel is in the ON position the bulbs should illuminate. Simply press the button on the remote control to turn the bulbs off. Likewise when the bulbs are off press the button on the remote control to illuminate the bulbs. It is advisable to leave the solar panel in the ON position for regular usage. Turning the solar panel to the OFF position disengages the remote control and can be used when storing or for long periods of intended inactivity. AUTO, turns the lights on automatically at night. The solar string light's batteries (I) are installed on the rear of the solar panel. Always open the battery compartment

with the AUTO/ON/OFF switch in the OFF position. Unscrew the back of the battery compartment and remove the backing piece. Inside you will see the batteries. When replacing the batteries, observe the correct polarity and match the battery specifications with the batteries you have removed. Use rechargeable batteries only. For this product use two rechargeable 18650 3.7V lithium-ion batteries. Replace the back of the battery compartment and continue to use the solar string lights as required.



**WARNING:** This product contains a button battery. If swallowed, it could cause severe injury or death in just 2 hours. Seek medical attention immediately.



3V, CR2025 lithium button battery (K) included.



Should you need to replace the included battery in the remote control locate the battery compartment on the back of the remote. Identify the small metal screw that holds the battery compartment closed. Remove the screw and follow the directional arrow on the remote to push open the remote and expose the battery. Replace the battery ensuring the right polarity is observed and ensure the replacement battery has the same characteristics as the one that has been removed.

1. **WARNING:** KEEP BATTERIES OUT OF REACH OF CHILDREN
2. Swallowing may lead to serious injury in as little as 2 hours or death, due to chemical burns and potential perforation of the esophagus.
3. If you suspect your child has swallowed or inserted a button battery, immediately seek urgent medical assistance.
4. Examine devices and make sure the battery compartment is correctly secured, e.g. that the screw or other mechanical fastener is tightened. Do not use if compartment is not secure.
5. Dispose of used button batteries immediately and safely. Flat batteries can still be dangerous.
6. Tell others about the risk associated with button batteries and how to keep their children safe.

## CONTACT

**Distributed by:**

- Costco Wholesale Corporation
- P.O. Box 34535
- Seattle, WA 98124-1535
- USA
- 1-800-774-2678
- [www.costco.com](http://www.costco.com).

**Importado por:**

- Importadora Primex S.A. de C.V.
- Blvd. Magnocentro No. 4
- San Fernando La Herradura
- Huixquilucan, Estado de México
- **C.P.** 52765
- **RFC:** IPR-930907-S70
- (55)-5246-5500
- [www.costco.com.mx](http://www.costco.com.mx).
- Costco Wholesale Australia Pty Ltd
- 17-21 Parramatta Road
- Lidcombe NSW 2141
- Australia
- [www.costco.com.au](http://www.costco.com.au).
- Costco Wholesale UK Ltd /
- Costco Online UK Ltd
- Hartspring Lane
- Watford, Herts
- WD25 8JS
- United Kingdom
- 01923 213113
- [www.costco.co.uk](http://www.costco.co.uk).



**Questions, problems, missing parts?**

- For assistance with assembly or instruction,



- parts and customer service, call:
- U.S.A & Canada only: 1-888-478-6435
- (English/French/Spanish language services).
- 8:30 am – 5 pm Monday-Friday,
- Eastern Standard Time
- or email: [info@sunforceproducts.com](mailto:info@sunforceproducts.com).
- [www.sunforceproducts.com](http://www.sunforceproducts.com).

**IMPORTANT, RETAIN FOR FUTURE REFERENCE: READ CAREFULLY**

## Documents / Resources



**[SUNFORCE 80033 Solar String Light with Remote Control](#)** [pdf] Instruction Manual  
 80033, 80033 Solar String Light with Remote Control, Solar String Light with Remote Control, S  
 tring Light with Remote Control, Light with Remote Control, Remote Control

Manuals+.