

SUNDIRECT SDUM-24002 Smart Lux Pro WiFi Enabled Wireless Controller Instruction Manual



WORKS WITH ALEXA



WORKS WITH GOOGLE HOME

Contents

1 Smart Lux Pro

1.1 WiFi-Enabled Wireless controller

1.1.1 Operation Instructions

1.1.2 1. Display and buttons

1.1.3 2. Mounting instructions

1.1.4 3. Operation

1.1.5 4. Wi-Fi and APP operation

1.1.6 5. Technical specifications

1.1.7 6. Warranty

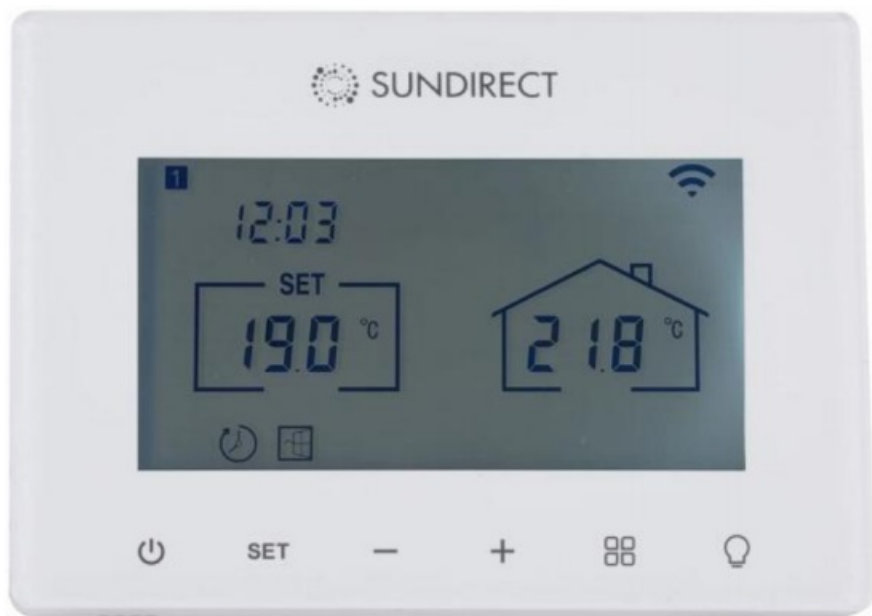
2 Documents / Resources

2.1 References

3 Related Posts

Smart Lux Pro

WiFi-Enabled Wireless controller



Scan the QR code and download the “Sundirect Smart” APP to control your Smart Lux Pro via a mobile device.



Operation Instructions

Version: SDUM-24002



In accordance with European directives applicable to this product.

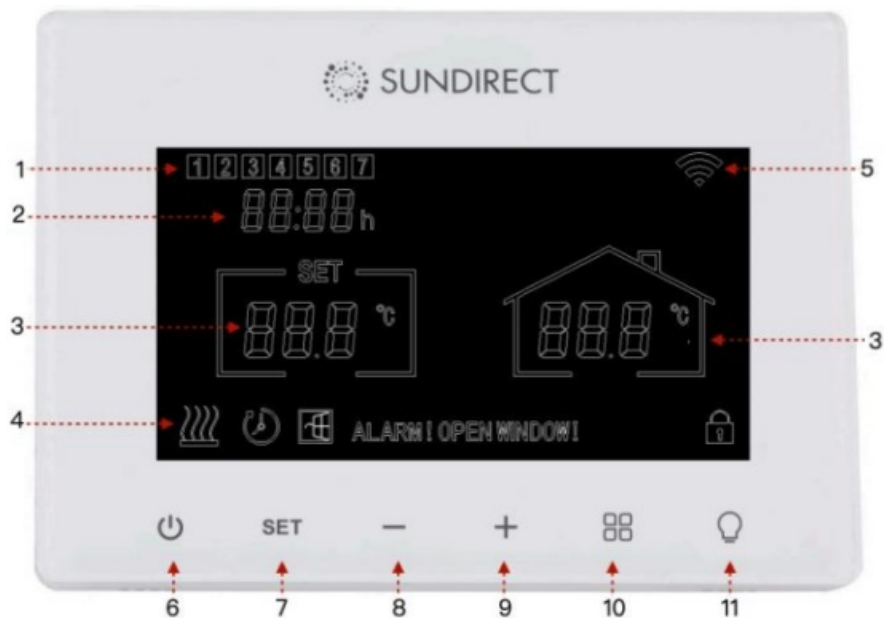


The crossed-out wheeled bin symbol indicates that the item should be disposed of separately from household waste. The item should be handed in for recycling in accordance with local environmental regulations for waste disposal. By separating a marked item from household waste, you will help reduce the volume of waste sent to incinerators or land-fills and minimise any potential negative impact on human health and the environment.

Thank you for purchasing this Sundirect Wifi-enabled Smart Thermostat.

Please read these instructions carefully and keep them safe for future use.

1. Display and buttons



- 1: Weekday
- 2: Time
- 3: Temperature
- 4: Heat-on status
- 5: Wifi signal
- 6: Power button
- 7: SET button
- 8: – button
- 9: +button
- 10: Light color button
- 11: Light power button

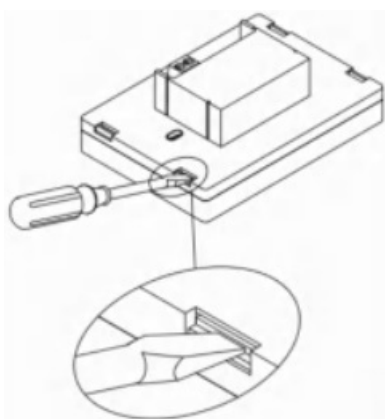
2. Mounting instructions

Smart Lux Pro is designed to be installed to a standard electrical box. Follow the drawing to finish the mounting.

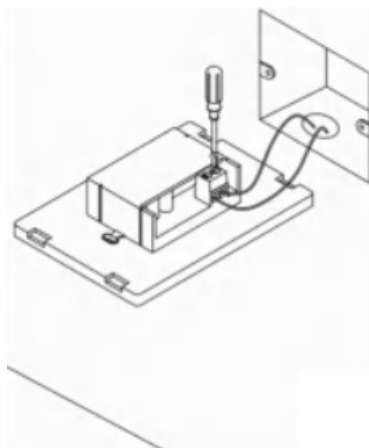
You can also connect Smart Lux Pro to the electricity temporarily with a USB cable (not supplied).

Important: Ensure main power is switched off before connecting.

(1)



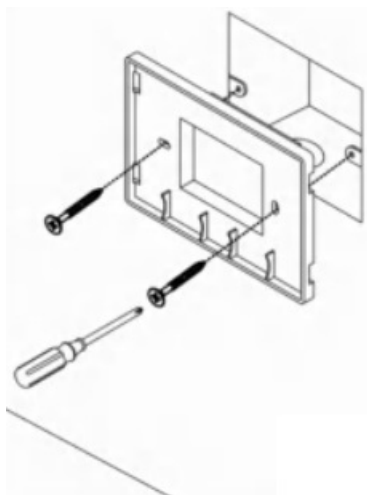
(2)



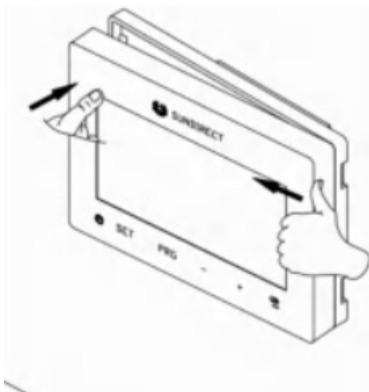
WALL

(3)

(4)



WALL



WALL

3. Operation

3.1 Pair to the receiver

1. Power on the heater. Ensure the pair status light is white, if not please long press the “P” button until it’s showing white. Double press the “P” button, and the signal light will start flashing. The heater is now ready to be paired with the Smart Lux Pro.

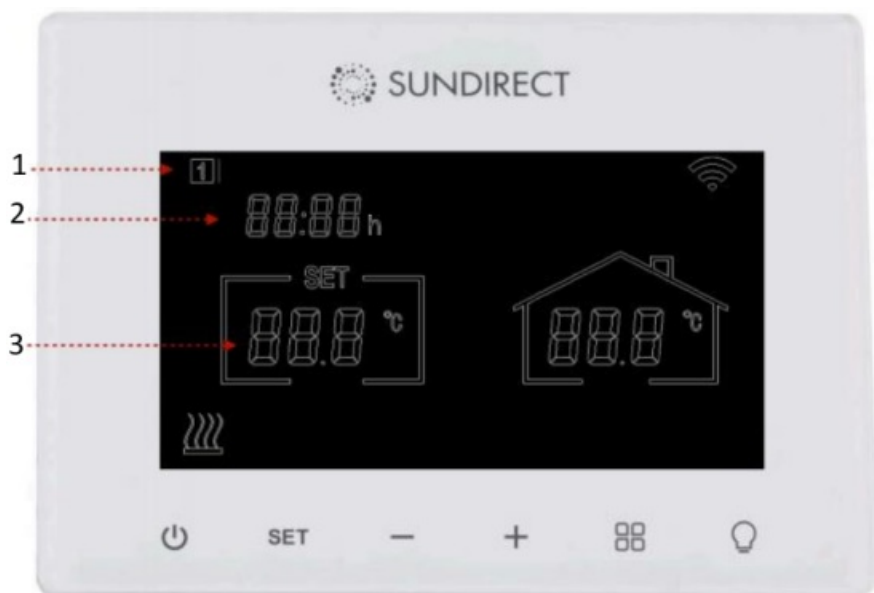
2. Power off the master controller until the screen shows “OFF.” Long press the “SET” button until the screen shows the “Pair” sign.

3. The signal light on the receiver will stop flashing, indicating that the heater is successfully paired with the Smart Lux Pro.

Note: One Lux-Plus heater can only pair to one Smart Lux Pro, however, one Smart Lux Pro can be paired to up to 10 heaters if they are in the same room. We also offer extra wireless light switches (Smart Switch) for the Lux-Plus heater, which need to be purchased separately.

3.2 Time settings and temperature calibration

Power on Smart Lux Pro. Press the “SET” button for 3 seconds to enter the settings. The screen on the thermostat will show as in the drawing on the right and the weekday setting will start to flash. Modify settings by pressing the “-” and “+” buttons. Continue by pressing “SET” to save settings and shift from one menu to another. If you would like to leave settings, press the “POWER” button to quit.



1. Weekday
2. Hour
3. Temperature calibration

3.3 Manual heating control

Set the desired room temperature by pressing “-” or “+” button.

3.4 Manual lighting control

Lighting on/off: Press the light power button to turn on/off the lighting.

Dimmable: Press and hold the light button to dim the light.

Color temperature adjustment: Short Press the light color button to adjust the color temperature between 3000K, 4000K and 6000K. To choose a specific color temperature between 3000 to 6000K, you can long press the color button to enter and the number on the screen will start to change, stop until you find the actual color temperature you want.

3.5 Child lock mode: Press the “SET” and “Lighting color” button together to activate/deactivate the child lock mode.

3.6 Heat lock mode: Heat-lock mode is a special mode designed to use in cases like summer period or in the condition where you don't want to change your heating settings but want to have an easier control for the lighting. Once under the heat-lock mode, any button will be changed to a light switch and can't be used to change the heating setting.

To enter the heat-lock mode, please press and hold the “Power” button until the screen shows “HL”(HEAT LOCK). To quit, press and hold the “Power” button again until the HEAT LOCK disappears from the screen.

3.7 Open window detection: This thermostat has an energy saving feature called Open window detection. You can turn this function on/off by pressing the “SET” and “+” button together for 3 seconds.

3.8 Factory mode:

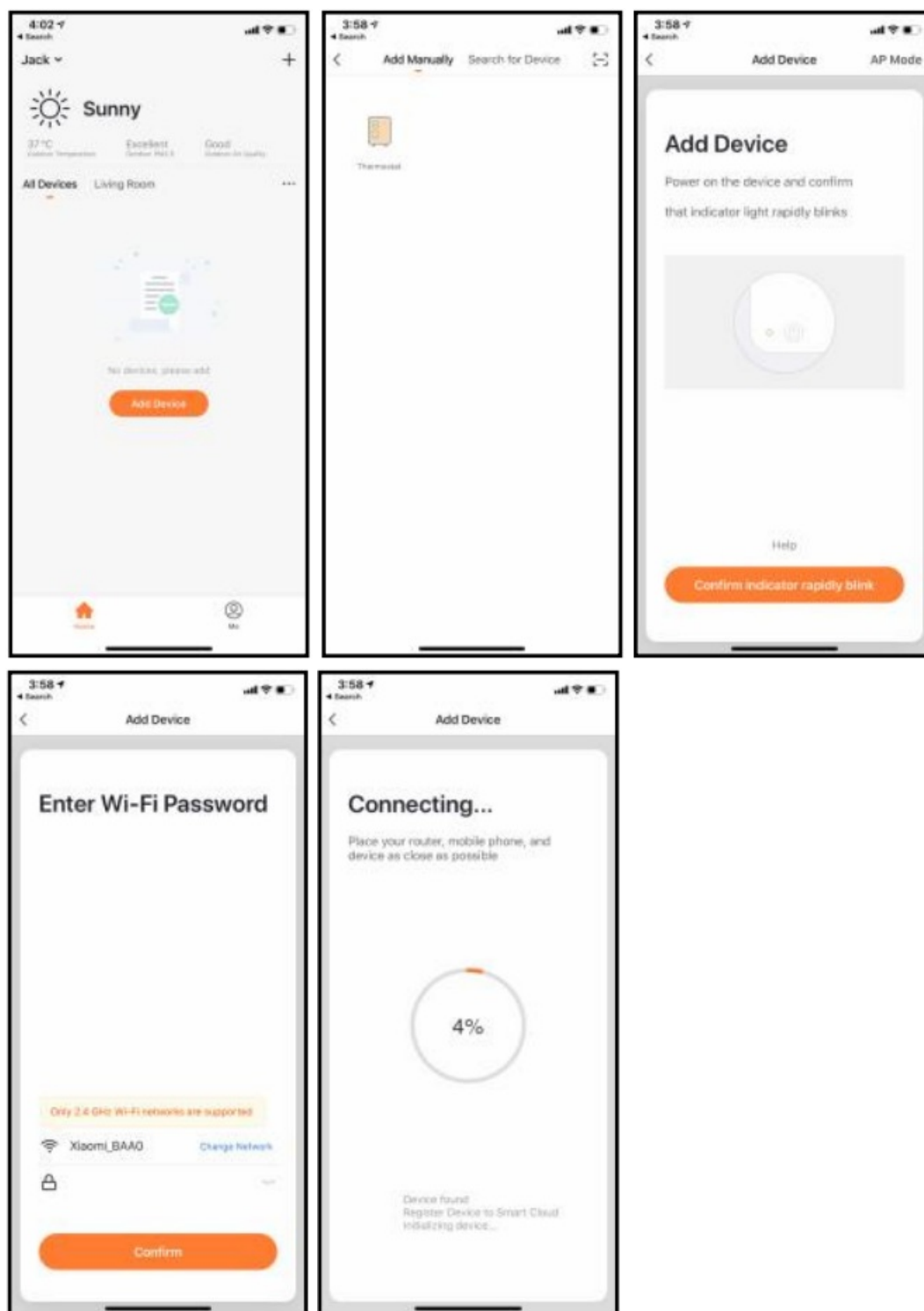
Press the power button until screen shows “OFF”, press the “SET” and “-” button together for 5 seconds until you see the screen flicking.

4. Wi-Fi and APP operation

4.1 How to download the Sundirect Smart APP

Scan the QR code on the first page of this manual to start the download of the APP, or you can download the APP “Sundirect Smart” on the App Store or Google Playstore. Open the APP and register with your phone number or Email address.

4.2 Connect to WiFi:



Step1: Connect Smart Lux Pro to the electricity, make sure the Wi-Fi signal on Smart Lux Pro is rapidly flashing (if not please power off Smart Lux Pro and long press the “-” button until Wi-Fi signal is flashing rapidly). Open the APP on your smartphone and add this device by pressing “+” on the top right of the APP.

Step2: Enter the Wi-Fi password of your home network. Please make sure your home Wi-Fi is working and keep the SmartLux Pro and smartphone/ tablet as close as possible to the Wi-Fi router. **Please note that our APP only works with a 2.4GHz network, it doesn’t support 5GHz networks currently. Also, make sure your internet router has enough capacity to add a new device.**

Step3: Wait until connection status shows 100% to finish the settings. The WiFi signal on the control box will stop flashing now.

If you fail to connect, please **power off** Smart Lux Pro, long press the “-” button on the thermostat until the Wi-Fi signal is flashing slowly and repeat the connection process.
If you still have issues with internet connection, please try to reset to factory mode.

5. Technical specifications

Model	Smart Lux Pro
Frequency	2.4GHz
Temperature range	5-40°C
Accuracy	0.1°C
Protection	IP20

6. Warranty

Sundirect offers a 2-year manufacturing warranty on Smart Lux Pro.

Within the warranty period from the date of purchase, Sundirect will repair or replace your SmartLux Pro where the fault is due to defects in workmanship or materials. Please contact your local Sundirect dealer in the event of a warranty claim and return the control box together with proof of purchase. The warranty covers the repair or replacement of the Smart Lux Pro only. The removal of the serial number on the back of SmartLux Pro will also void this warranty. All labels shall not be removed. Any damages to SmartLux Pro caused by the user are not covered by this warranty. This includes scratches on the surface. Sundirect is not responsible for any damages, losses or injuries due to the ingress of water or moisture, accidental damage, mishandling, external impact, repairs or adjustment by unauthorized persons.

Serial No. of this Sundirect thermostat is:


Sundirect Technology Ltd.
No.3 Xingsun Road, Daicun, 311261 Xiaoshan,
Hangzhou China.

Sundirect Logistics Europe
Hofbauer GmbH
Zimmerweg 4, 6020 Innsbruck
Austria / Europe

info@sundirect-heater.com
www.sundirect-heater.com
© 2024 Sundirect Technology Ltd.



Documents / Resources

 <p>The image shows the front of the SDUM-24002 Smart Lux Pro WiFi Enabled Wireless Controller. It features a small LCD screen displaying '0.00' and several buttons. The text 'SUNDIRECT' is at the top, and 'Smart Lux Pro' is prominently displayed. Below the screen, it says 'WiFi Enabled Wireless Controller'. At the bottom, there is a QR code and the text 'Operation Instructions (Version: SDUM-24002)'.</p>	<p>SUNDIRECT SDUM-24002 Smart Lux Pro WiFi Enabled Wireless Controller [pdf] Instruction Manual</p> <p>SDUM-24002 Smart Lux Pro WiFi Enabled Wireless Controller, SDUM-24002, Smart Lux Pro WiFi Enabled Wireless Controller, WiFi Enabled Wireless Controller, Enabled Wireless Controller, Wireless Controller</p>
---	--

References

- [User Manual](#)

Manuals+. [Privacy Policy](#)

This website is an independent publication and is neither affiliated with nor endorsed by any of the trademark owners. The "Bluetooth®" word mark and logos are registered trademarks owned by Bluetooth SIG, Inc. The "Wi-Fi®" word mark and logos are registered trademarks owned by the Wi-Fi Alliance. Any use of these marks on this website does not imply any affiliation with or endorsement.