



Sunco DL_SMDR56-13W-3K_65K LED Retrofit Selectable Smooth Downlight User Manual

[Home](#) » [SUNCO](#) » Sunco DL_SMDR56-13W-3K_65K LED Retrofit Selectable Smooth Downlight User Manual 

Contents

- [1 Sunco DL_SMDR56-13W-3K_65K LED Retrofit Selectable Smooth Downlight](#)
- [2 Product Information](#)
- [3 Product Usage Instructions](#)
- [4 What's in the Box](#)
- [5 Safety Information](#)
- [6 FCC STATEMENT](#)
- [7 Quickstart Guide](#)
- [8 Installation Guide](#)
- [9 Recommended Dimmers](#)
- [10 Specifications](#)
- [11 Common Troubleshooting](#)
- [12 Light Distribution Angle](#)
- [13 Warranty Policy](#)
- [14 Customer Service](#)
- [15 Documents / Resources](#)
 - [15.1 References](#)
- [16 Related Posts](#)

Sunco

Sunco DL_SMDR56-13W-3K_65K LED Retrofit Selectable Smooth Downlight



Product Information

Specifications

- **Voltage:** 120V
- **Wattage:** 13W
- **Wattage Equivalency:** N/A
- **Beam Angle:** N/A
- **Weight:** N/A
- **Housing Material:** N/A
- **Dimmable:** Yes
- **Average Lifetime:** 50,000 hrs
- **Lumens:** 965LM
- **Moisture Rating:** Damp
- **CRI:** 80+
- **Usage:** Indoor
- **IC Rated:** Yes
- **Warranty:** 7 Years

Product Usage Instructions

Before You Start

Safety Information:

- To reduce the risk of fire, electric shock, or physical injury:
- **WARNING:** Cancer & Reproductive Harm- www.P65Warnings.ca.gov
- This device complies with Part 15 of the FCC rules. Operation is subject to the following two conditions:
 1. This device may not cause harmful interference.
 2. This device must accept any interference that may cause undesired operation.
- Please review all instructions carefully before installation.

Quickstart Guide:

1. Locate the recessed housing.
2. Determine the type of connector available.
3. Thread the adapter to make the connection.
4. Push the downlight into the can until secure.

Installation Guide:

1. STEP 1:

- Turn off the circuit breaker before installation.
- Locate the housing.

NOTE: Remove the previous fixture. The fixture may be hot so allow time to cool after turning off the power.

2. STEP 2:

- Determine the size of the opening.
- Secure the clip springs firmly within the retrofit connector.

3. STEP 3:

- Determine the type of connector available.
- TP24 Connector(1)
- E26 Base(2)

4. STEP 4:

1. Thread the appropriate adapter to make a connection in the housing.

NOTE: The wires may come loose from the connectors so ensure they are attached.

2. Tuck all wires into the can.

1. STEP 5:

1. On the back of the retrofit fixture, slide the CCT Selection Switch to choose from five color temperatures.
2. Try each CCT to determine the best fit.
3. Turn off the light switch after selecting your choice and continue installing.

2. STEP 6:

- Line up the trim ring with the opening.
- Push the downlight into the can until secure. Compression clips will hold retrofit light in place. Push up spring clips and insert them into the ceiling.
- Turn on the circuit breaker and test the light.

FAQ

Common Troubleshooting

The light isn't turning on.

Double-check if the fixture is properly connected and circuit breaker hasn't been tripped.

Light unexpectedly fails.

Dimming

- Light not dimming to the lowest setting.
- Light not dimming smoothly.
- Light not compatible with dimmer switch.

Flickering

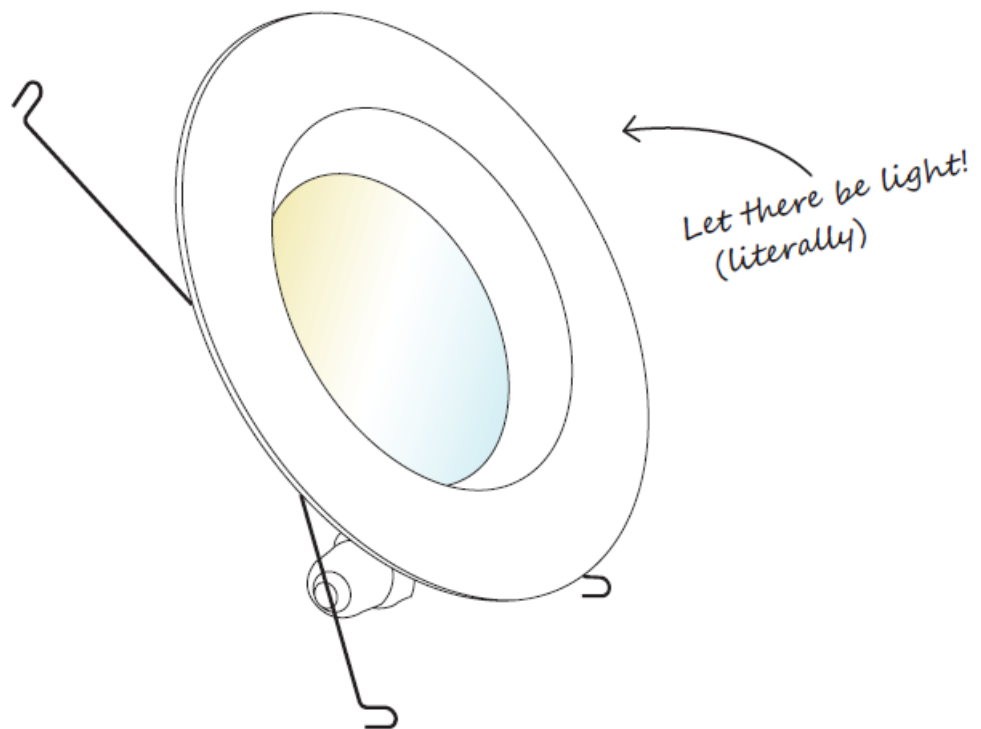
- The light is flickering when turned on.
- Light flickering with other lights on the same circuit.
- Light flickering when turned on.
- Light flickering when dimmed.

Buzzing

Fixture buzzing with power outages.

What's in the Box

Retrofit Downlight



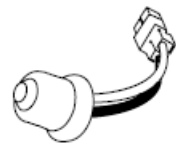
x1

Light Fixture



x1

TP24 Connector



x1

E26 Base

Safety Information

- Turn off the circuit breaker before installing this fixture.
- This product should be installed by a person familiar with the construction and operation of the product and the hazards involved. Safety eyeglasses and gloves are recommended.
- Abide by related regional and local laws or regulations.
- Proper grounding is required to ensure safety.
- Do not alter, relocate, or remove wiring during installation.
- Do not make or alter any open holes in the wiring enclosure or electrical components during installation.
- Check for shipping damage before installing. If the product is damaged, do not use it.
- Keep fixtures away from corrosive substances.
- Suitable for damp locations at temperatures ranging from 4°F to 113°F. Not for use where directly exposed to water.
- Clean the fixture regularly to ensure proper operation. Do not clean with harsh solvents.
- Use safety precautions and abide by regional and local laws or regulations.
- This product is not compatible with 3rd party sensors.
- This product is not compatible with photo controls.
- This product is not compatible with occupancy sensors.
- This product is not compatible with timing devices.

WARNING:

Cancer & Reproductive Harm- www.P65Warnings.ca.gov.

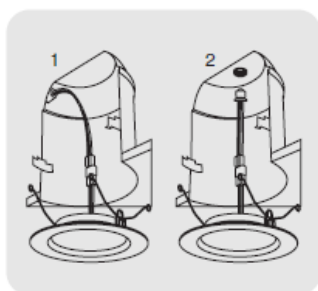
FCC STATEMENT

This device complies with Part 15 of the FCC rules. Operation is subject to the following two conditions:

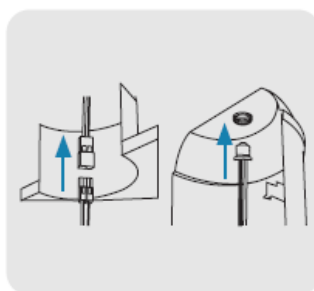
1. This device may not cause harmful interference.
2. This device must accept any interference that may cause undesired operation. Please review all instructions carefully before installation.

Quickstart Guide**Step 1**

Locate the recessed housing.

**Step 2**

Determine type of connector available.

**Step 3**

Thread the adapter to make connection.

**Step 4**

Push downlight into can until secure.

Installation Guide**STEP 1**

- Turn off the circuit breaker before installation.
- Locate the housing.

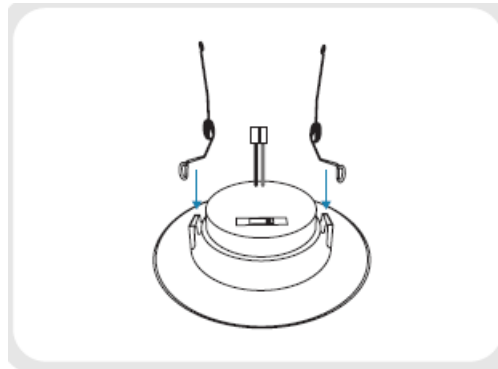
NOTE:

Remove the previous fixture. The fixture may be hot so allow time to cool after turning off power.

**STEP 2**

- Determine the size of the opening.

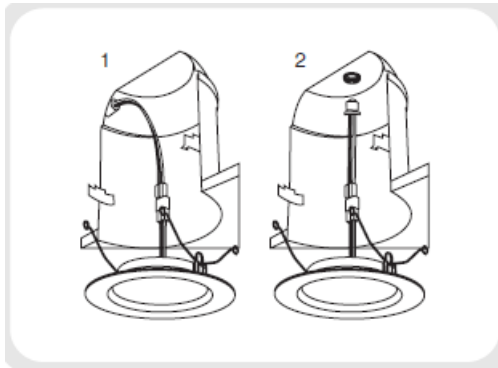
- Secure the clip springs firmly within the retrofit connector.



STEP 3

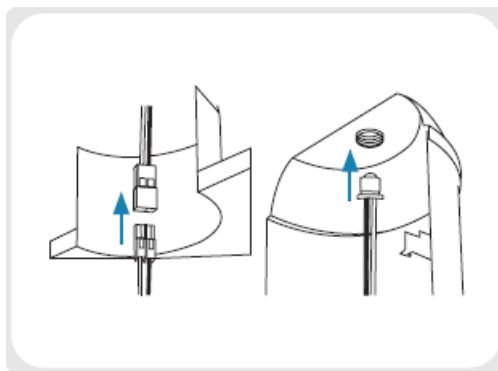
Determine the type of connector available.

- TP24 Connector(1)
- E26 Base(2)



STEP 4

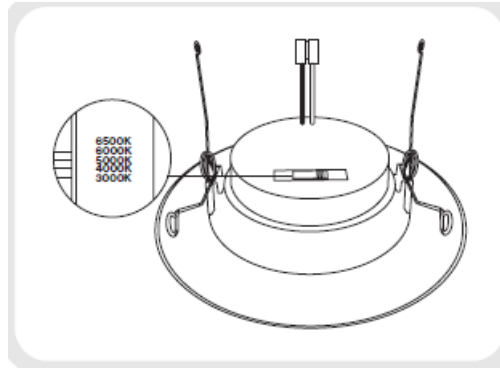
- Thread the appropriate adapter to make a connection in the housing.
NOTE: the wires may come loose from the connectors so ensure they are attached.
- Tuck all wires into the can.



STEP 5

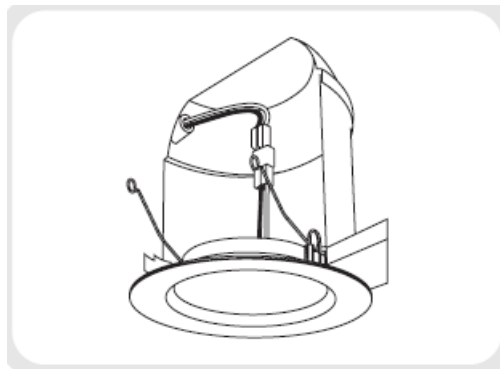
- On the back of the retrofit fixture, slide the CCT Selection Switch to choose from five color temperatures. Try each CCT to determine the best fit.

- Turn off the light switch after selecting your choice and continue installing.



STEP 6

- Line up the trim ring with the opening.
- Push the downlight into the can until secure. Compression clips will hold retrofit light in place. Push up spring clips and insert them into the ceiling.
- Turn on the circuit breaker and test the light.



Recommended Dimmers

Scan for the full compatible dimmer list!



Brand	Model
LUTRON	MACL-153M-WH
LUTRON	CTCL-153PDH-WH
LUTRON	DVCL-153PR-WH
LUTRON	DVCL-153P-WH
LUTRON	MACL-153MH-WH
LUTRON	RRD-6CL
LUTRON	SLV-600P
LUTRON	TGCL-153PH

Specifications

Voltage	120V	Average Lifetime	50,000 hrs
Wattage	13W	Lumens	965LM
Wattage Equivalency	120W	Moisture Rating	Damp
Beam Angle	90°	CRI	80+
Weight	0.45lbs	Usage	Indoor
Housing Material	Polycarbonate	IC Rated	Yes
Dimmable	Yes	Warranty	7 Years

Common Troubleshooting

Feeling in the dark about an issue with your product?

No worries!

Our troubleshooting section is here to shed some light and provide you with easy-to-follow solutions for any problem. If you still need some assistance, please feel free to contact us with any questions. Our team of lighting experts are happy to help brighten your day.

Installation

- **The light isn't turning on.**

Double-check if the fixture is properly connected and the circuit breaker hasn't been tripped.

- **Light unexpectedly fails.**

For further assistance, contact our customer support.

Dimming

- **Light not dimming to the lowest setting.**

Ensure minimum dimmer load requirement is met.

- **Light not dimming smoothly.**

Verify dimmer compatibility with the fixture.

- **Light not compatible with dimmer switch.**

Check light-dimmer compatibility. Consider purchasing a compatible switch if necessary.

Flickering

- **The light is flickering when turned on.**

Check that fixture wiring connections are secure.

- **Light flickering with other lights on the same circuit.**

Check that the lights on the same circuit are not overloading the circuit.

- **Light flickering when turned on.**

Verify fixture compatibility.

- **Light flickering when dimmed.**

Verify dimmer switch compatibility.

Buzzing

- **Fixture buzzing with power outages.**

Verify light is connected to the surge protector securely.

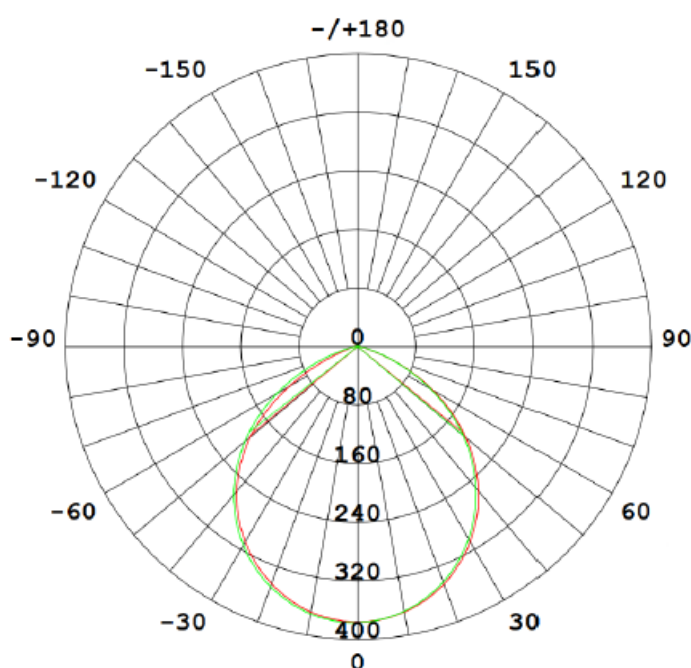
- **Fixture buzzing with appliances or electronic devices.**

Look for nearby interferences that can cause buzzing. Such as televisions, radios, computers, etc.

- **The fixture buzzes when dimmed.**

Verify dimmer switch compatibility.

Light Distribution Angle



AVERAGE BEAM ANGLE (50%): 101.6 DEG

— C0/180 101.3°

— C90/270 101.8°

UNIT:cd Luminous Intensity Distribution 1

Lighting distribution angle refers to the spread of light emitted from a light source. It is an important factor to consider when selecting a fixture or bulb, as it affects the way it will illuminate an area. There are two main types

of lighting distribution angles: A symmetric lighting distribution emits light evenly in all directions, creating a cone-shaped pattern that provides a pool of light. This type of lighting is ideal for general lighting and illuminating large areas. Common applications for symmetric lighting include general area illumination, security lighting, and perimeter lighting. Symmetric lighting is also used to a certain degree in up-lighting.

An asymmetric lighting distribution angle, also known as a beam angle, creates a pattern that focuses light in a specific direction. This type of lighting is ideal for task lighting as it reduces glare and light spills in other areas. Common applications include task lighting in spaces such as landscape settings, retail stores, museums, and much more. It is important to note that the lighting distribution angle can also be affected by other factors such as the reflector design of the light source, the type of lens used, and the distance between the light source and the surface being illuminated.

Warranty Policy

- This product is covered by our industry-leading 7-year warranty.
- It gets even better – scan the QR code for 2 extra years of protection!

Scan me for two extra years!



30-Day Return Policy


- At Sunco, we value our customers and stand by the quality and performance of our products.
- If you are not completely satisfied with your purchase, we accept returns within 30 days of your purchase date.

Customer Service

Our Los Angeles team of lighting experts is here to assist you with all your needs! Contact us at:

- **Email:** support@sunco.com
- **Call or Text:** (844) 334-9938

Documents / Resources

	<p>Sunco DL_SMDR56-13W-3K_65K LED Retrofit Selectable Smooth Downlight [pdf] User Manual</p> <p>DL_SMDR56-13W-3K_65K, DL_SMDR56-13W-3K_65K LED Retrofit Selectable Smooth Downlight, LED Retrofit Selectable Smooth Downlight, Retrofit Selectable Smooth Downlight, Selectable Smooth Downlight, Smooth Downlight, Downlight</p>
-------------------------------------------------------------------------------------	---------------------------------------------------------------------------------------------------------------------------------------------------------------------------------------------------------------------------------------------------------------------------------------------------------------------------------------------------

References

- [🌐 P65Warnings.ca.gov](https://p65warnings.ca.gov)
- [User Manual](#)

[Manuals+](#), [Privacy Policy](#)