



SUNCO LIGHTING 54885 Bi-Level PIR Sensor Instruction Manual

[Home](#) » [Sunco Lighting](#) » SUNCO LIGHTING 54885 Bi-Level PIR Sensor Instruction Manual 



Contents

- [1 54885 Bi-Level PIR Sensor](#)
- [2 SENSOR INFORMATION](#)
- [3 WIRING DIAGRAM](#)
- [4 SENSOR COVERAGE](#)
- [5 OCCUPANCY SENSOR SETTINGS](#)
- [6 Documents / Resources](#)
- [7 Related Posts](#)

54885 Bi-Level PIR Sensor

BI-LEVEL PIR SENSOR • 54885

INSTALL INSTRUCTIONS

PLEASE FIND A QUALIFIED ELECTRICIAN FOR INSTALLATION. Please read the instructions before you install the sensor and use the luminaire.

GENERAL:

ALL ELECTRICAL CONNECTIONS MUST BE IN ACCORDANCE WITH LOCAL AND NATIONAL ELECTRICAL CODE (N.E.C.) STANDARDS. IF YOU ARE UNFAMILIAR WITH PROPER ELECTRICAL WIRING CONNECTIONS OBTAIN THE SERVICES OF A QUALIFIED ELECTRICIAN. REMOVE THE TRIM FROM THE BOX AND MAKE SURE THAT NO PARTS ARE MISSING.

- **WARNING** – Risk of fire or electric shock. Sensor installation requires knowledge of luminaires electrical systems. If not qualified, do not attempt installation. Contact a qualified electrician.
- **WARNING** – Risk of fire or electric shock. Install this sensor only in luminaires that have the construction features and dimensions shown in the photographs and/or drawings and where the input rating of the sensor does not exceed the input rating of the luminaire.
- **WARNING** – To prevent wiring damage or abrasion, do not expose wiring to edges of sheet metal or other sharp objects.
- Risk of Electric Shock: Disconnect power or circuit breaker before installing or servicing.
- Do not make or alter any open holes in an enclosure of wiring or electrical components during installation.

WARNING – NOTE:

- Warm up time is 40 seconds. After the sensor connects input power for the first time, the light will stay on for 40 seconds, then go to dimming to work normally.
- Factory Default Settings: Sensitivity set to 100%. Hold on time 10 seconds. Daylight sensor at 30 Lux. Dimming level at 30%. Dimming time at 60 minutes.
- If any setting is changed with DIP Switch or remote control (RC-100, sold separately), the LED light will turn on/off as confirmation of connection.

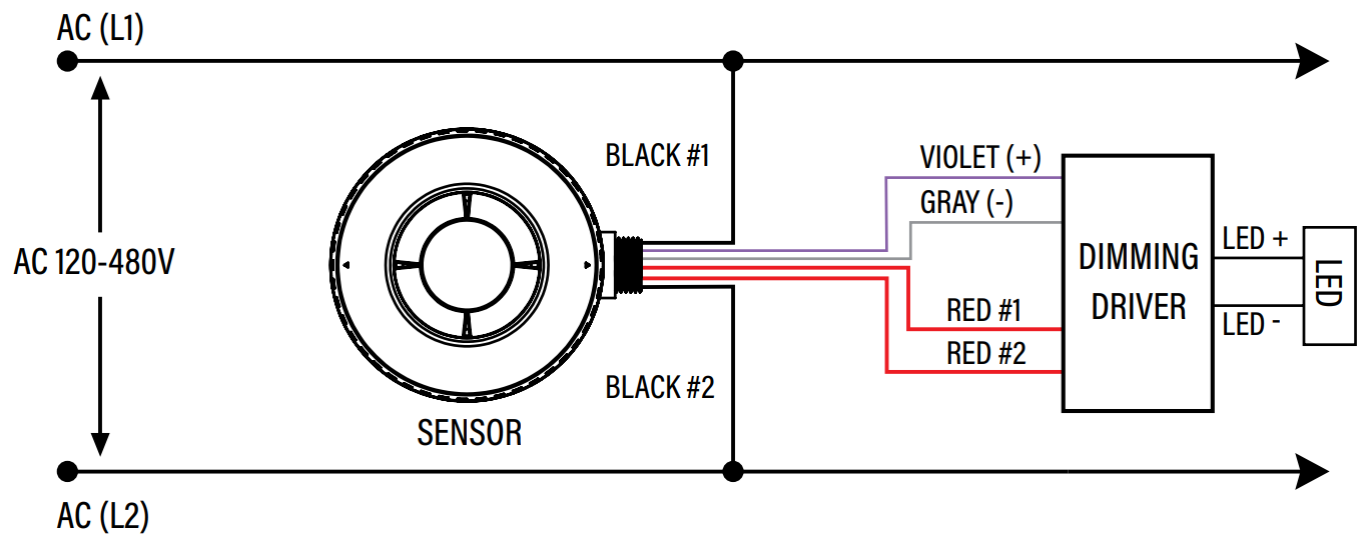


CAUTION FOR YOUR SAFETY: IF YOU ARE UNSURE ABOUT ANY PART OF THESE INSTRUCTIONS, CONSULT A QUALIFIED ELECTRICIAN.

SENSOR INFORMATION

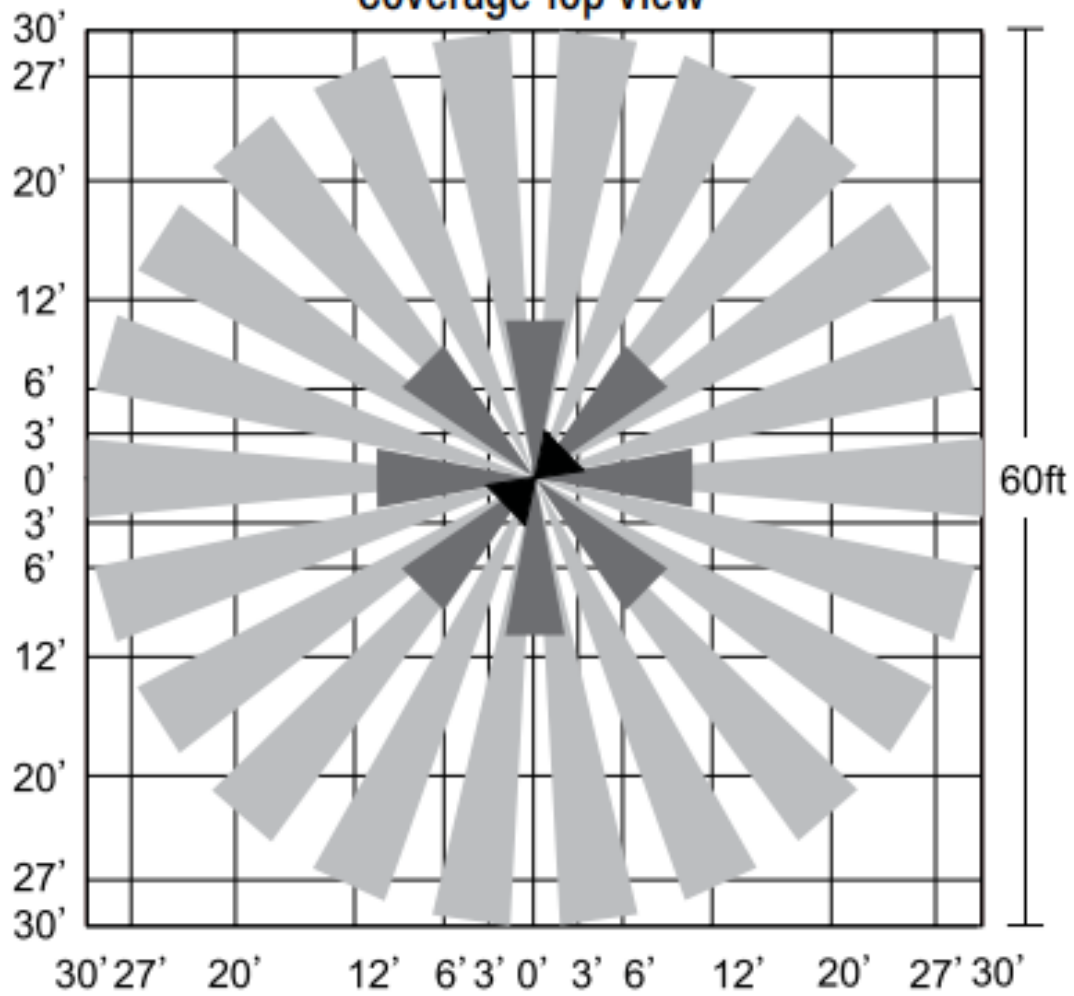
SPECIFICATIONS	
Power Load	120-480VAC 50/60Hz
Maximum Load @ -40° – 158°F	Tungsten – 800W @ 120V / 1200W @ 277V Electronic Ballast – 8A @ 120V / 5A @ 277V / 5A @ 347V Standard Ballast – 5A @ 480V
Dim Control Output	0-10V, Max. 25mA Sinking Current
Detection Radius / Angle	Max 26.2ft / 360°
Mounting Height	Max 40ft
Time Setting	10 Sec. -15 Min. (adjustable)
Light-Control	10-2000 Lux (adjustable)
Humidity	Max. 95% RH
Temperature	-40° – 158°F

WIRING DIAGRAM

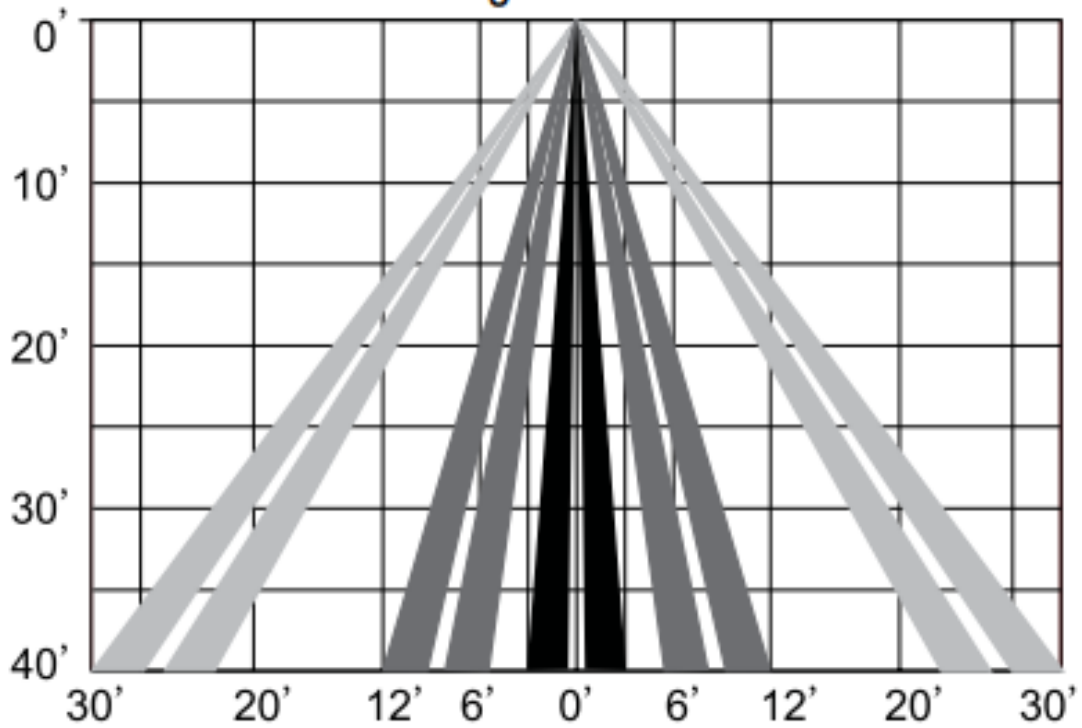


SENSOR COVERAGE

Coverage Top View

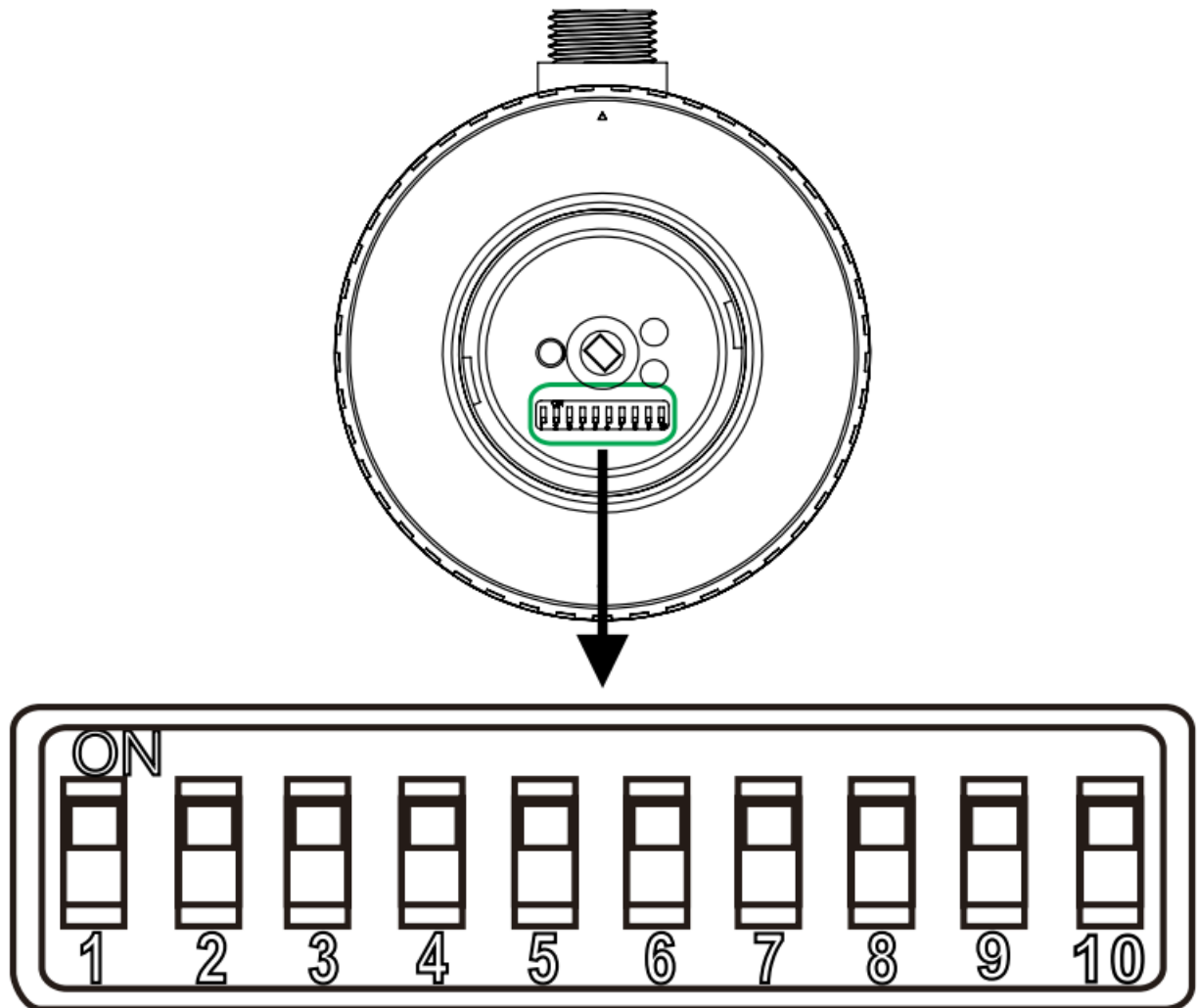


Coverage Side View



WARNING DISCONNECT POWER BEFORE INSTALLING OR SERVICING.
PARAMETER SETTING BY DIP SWITCH

- Switches 1 and 2 are to set the sensitivity of the sensor.
- Switches 3 and 4 are to set the hold time of the sensor.
- Switches 5 and 6 are to set the lux of the sensor.
- Switches 7 and 8 are to set the stand-by light level of the fixture.
- Switches 9 and 10 are to set the stand-by time.



OCCUPANCY SENSOR SETTINGS

Detection Range Setting (Sensitivity): Detection range is a term used to describe the radius of the more or less circular detection zone produced on the ground after mounting the sensor light at a height of 40ft. Flip switch to the ON position as “↑”, or to the OFF position as “↓”, switch location and detection range of the corresponding table is shown in Fig. 1.

Fig. 1

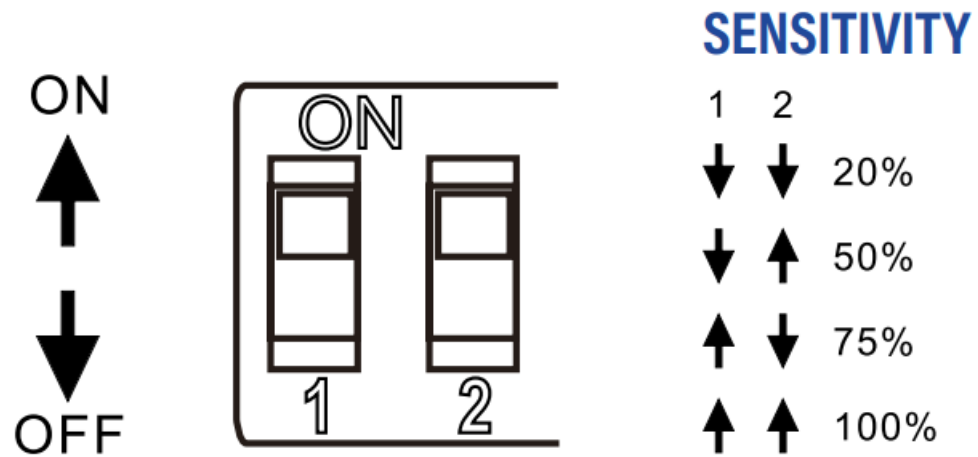
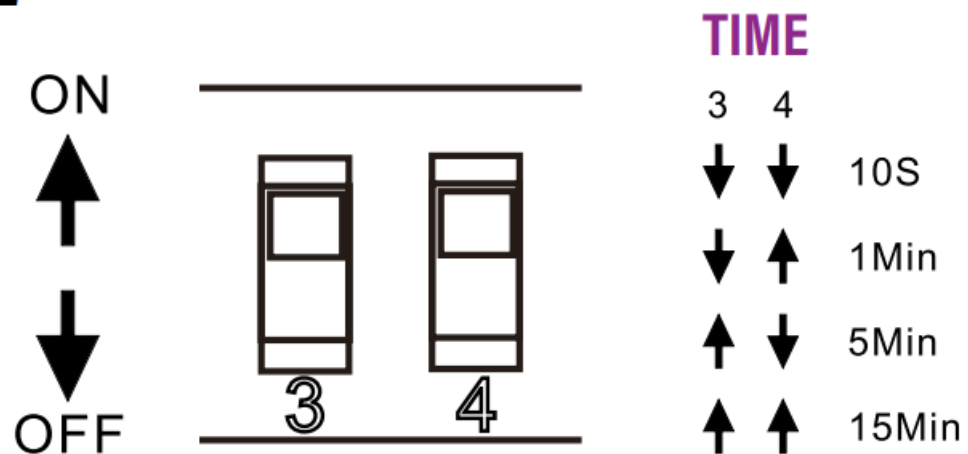


Fig. 2



Hold Time Setting: The light can be set to stay ON for any period of time between approximately 10 seconds and a maximum of 15 minutes. Any movement detected before this time has elapsed will re-start the timer. It is recommended to select the shortest time for adjusting the detection zone and for performing the walk test.

Flip switch to the ON position as “↑”, or to the OFF position as “↓”, switch location and settings of the corresponding table is shown in Fig. 2.

Light Control Setting (Lux): The chosen light response threshold ranges from approximately 10-50 lux. Flip

switch to the ON position as “↑”, or to the OFF position as “↓”, switch location and light-control of the corresponding table is shown in Fig. 3.

Fig. 3

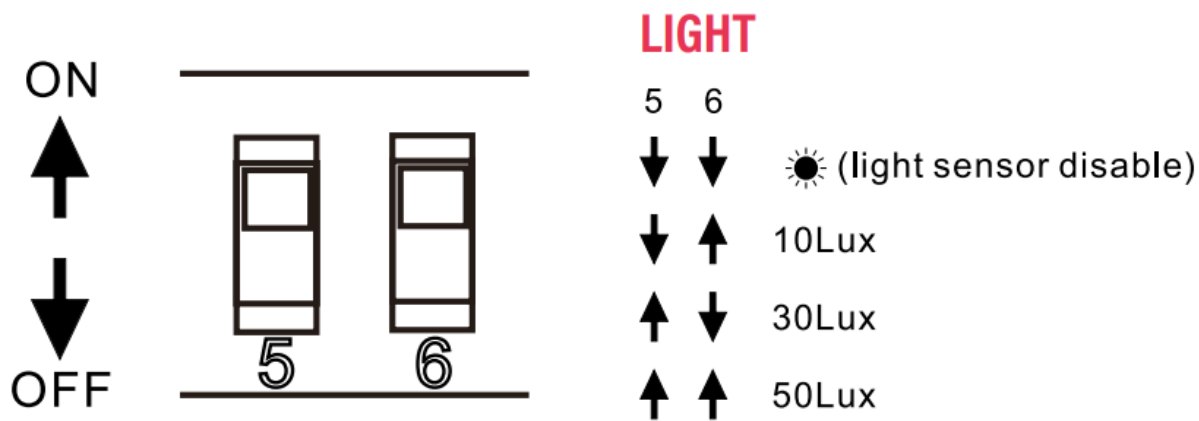
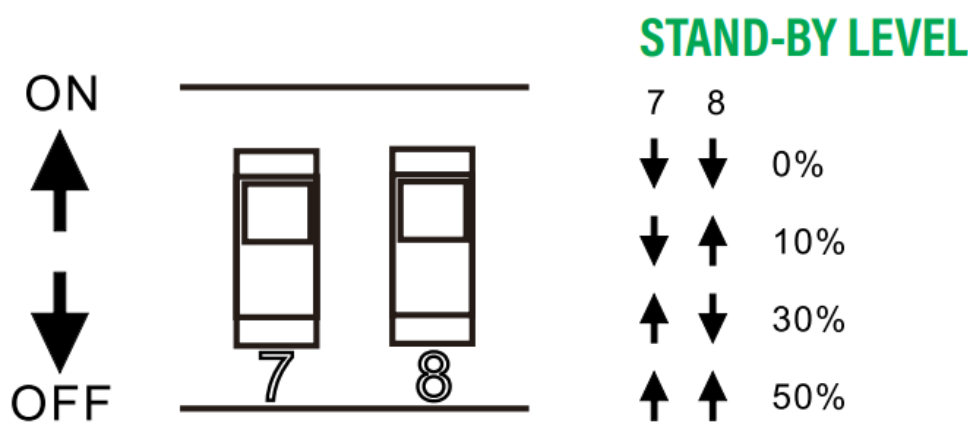


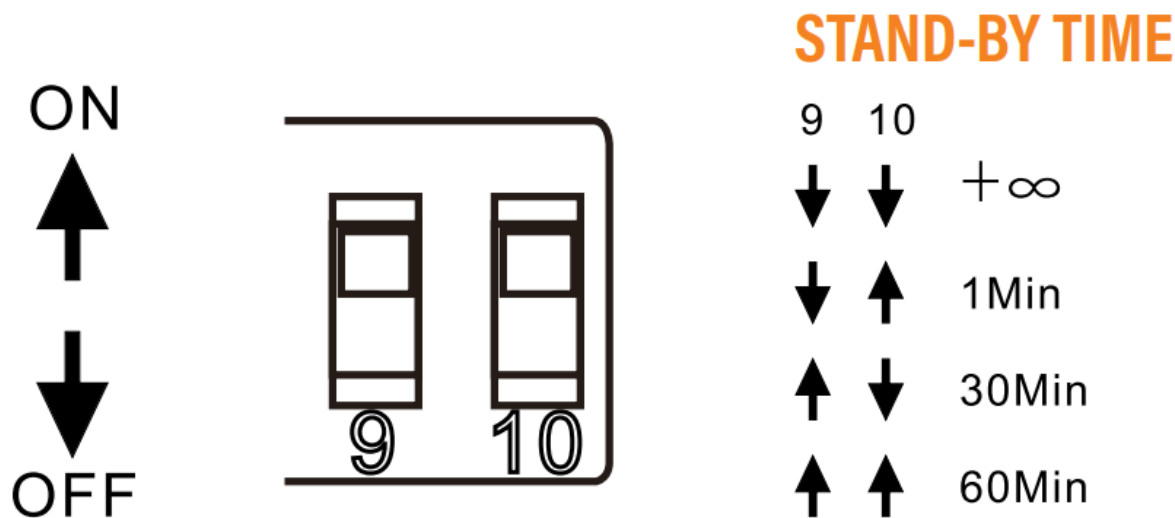
Fig. 4



Stand-By Light Level Setting: Switch in the ON position is “↑”, and the OFF position is “↓”, switch location and settings are shown in Fig. 4.

Stand-By Time Setting: Switch in the ON position is “↑”, and the OFF position is “↓”, switch location and settings are shown in Fig. 5.

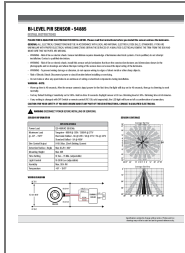
Fig. 5



Specifications subject to change without notice. Photos and line drawings may not be to scale and are for general reference only.



Documents / Resources



[SUNCO LIGHTING 54885 Bi-Level PIR Sensor](#) [pdf] Instruction Manual
54885 Bi-Level PIR Sensor, Bi-Level PIR Sensor, 54885 PIR Sensor, PIR Sensor, Sensor, 54885

[Manuals+](#).