



SUN GLOW Programming Resides with the Motor Instruction Manual

[Home](#) » [SUN GLOW](#) » SUN GLOW Programming Resides with the Motor Instruction Manual 



**Programming Resides with the Motor
Instruction Manual**



Contents

- [1 MOTOR INFORMATION](#)
- [2 CONTROL RANGE](#)
- [3 RECHARGING THE MOTOR](#)
- [4 MOTOR BUTTON LAYOUT](#)
- [5 REMOTE BUTTON LAYOUT](#)
- [6 STEP 1: PREPARING FOR PROGRAMMING](#)
- [7 SWITCH DIRECTION](#)
- [8 STEP 2: BASIC PROGRAMMING](#)
- [9 STEP 3: ADVANCED PROGRAMMING](#)
- [10 Documents / Resources](#)
- [11 Related Posts](#)

MOTOR INFORMATION

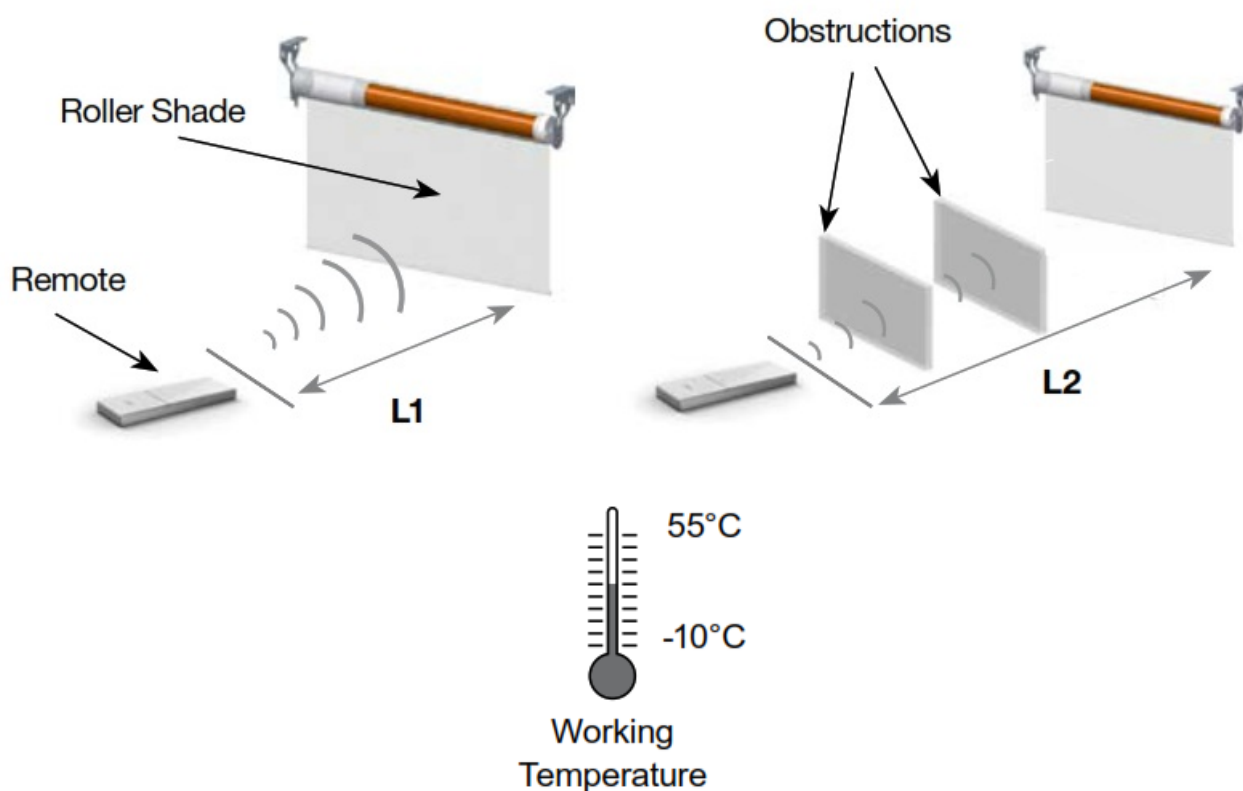
1. Ensure motor is protected. Any damages during transportation, storage, installation or misuse can cause the motor to not work properly.
2. Charge the motor every 6 months to ensure optimal performance.
3. If the battery charge is at a lower level, the motor will beep 10 times to prompt that it needs to be charged.
4. Maximum running time of the motor is 6 minutes without limits. Motor will be asleep after six minutes has passed.

Motor will still be in wake up/programming mode once the motor has restarted.

Programming resides with the motor. Each motor can store up to 20 copied channels.

CONTROL RANGE

⚠️ SIGNAL STRENGTH AND RANGE MAY VARY DEPENDING ON THE ACTUAL ENVIRONMENT.

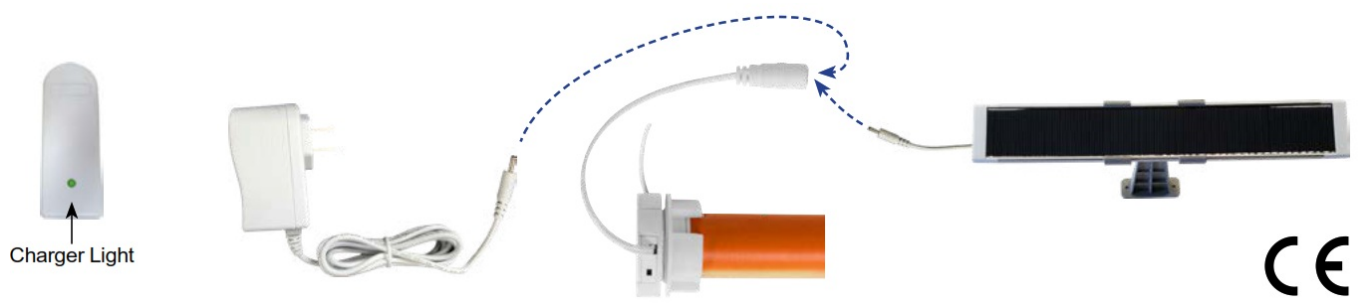


L1 Open Area	L2 With Obstructions	Emission Frequency
200m	35m	433.92/868 MHz

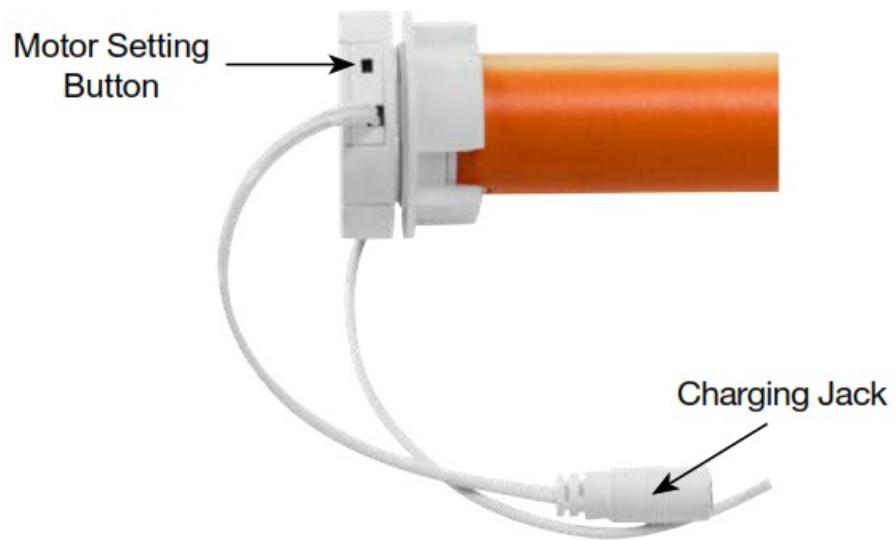
RECHARGING THE MOTOR

To recharge the motor's battery, connect the SG DC charger to the motor head charging jack and plug the charger into a standard electrical outlet. When the battery is fully charged, the indication light on the charger will switch from red to green. You can also use the SG Solar Panel to keep the battery constantly charged while exposed to sufficient sunlight.

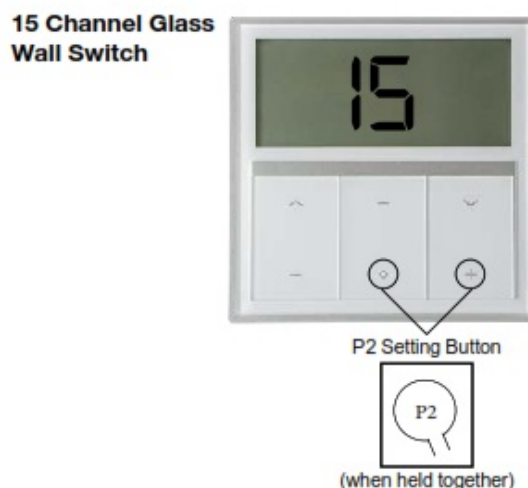
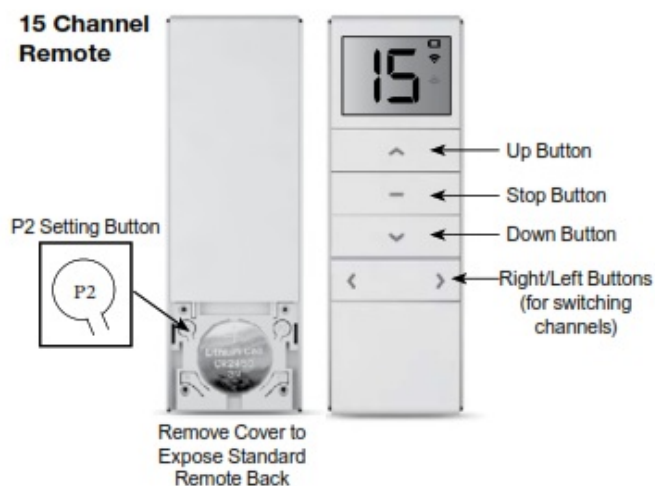
⚠️ IF PURCHASING MORE THAN ONE CHARGER, PLEASE ENSURE THE OUTPUT VOLTAGE ON THE CHARGER AND MOTOR MATCH.



MOTOR BUTTON LAYOUT



REMOTE BUTTON LAYOUT



BEFORE YOU BEGIN:



1. As a standard, motors are shipped in factory default mode without limits set.
2. Channel "0" cannot be programmed on a multi channel remote. It is intended to be a master channel for all motors.
3. Select the intended channel before activating wake-up mode, basic or advanced program settings.

STEP 1: PREPARING FOR PROGRAMMING

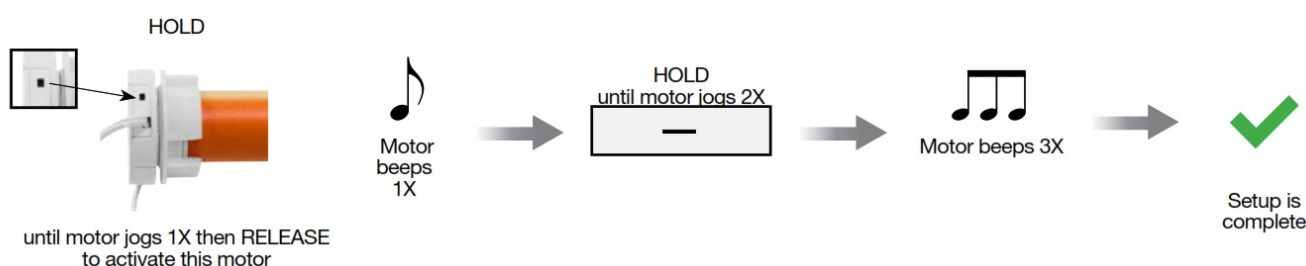
WAKE-UP MODE

(Must Be Done Before Basic & Advanced Programming)

Required to make the connection between the remote channel and the motor. During each of the following settings the time between each operation must be shorter than 10 seconds, otherwise the program will be canceled, and the motor will be back in default mode. Follow the steps below to wake-up the motor.



Note: No assigned limits in wake-up mode.



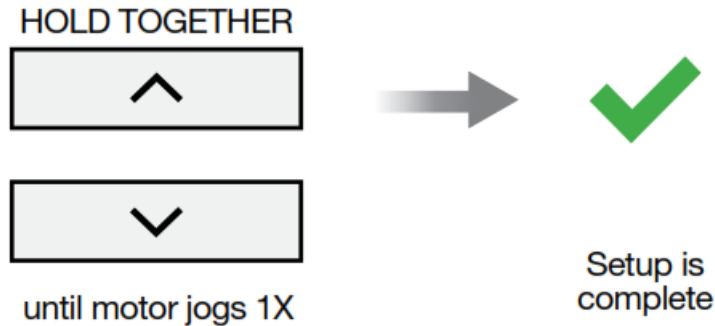


Test shade: Move shade by holding the up or down button to ensure that the motor works on the desired channel and moves in the correct direction.



Do not let the shade crash into the valance or unroll from the tube.

SWITCH DIRECTION



Test shade: Move shade up and down to ensure that the direction has been changed.

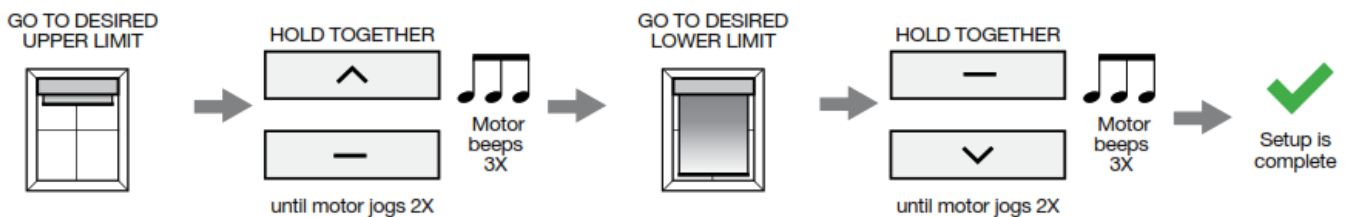


Do not let the shade crash into the valance or unroll from the tube.

STEP 2: BASIC PROGRAMMING

SETTING MOTOR LIMITS

Allows you to set two positions: the upper and lower limits. This can be applied to each shade per channel. During limit setting, the time between two operations must be shorter than 2 minutes, otherwise the program will be cancelled, and the motor will be back in wake-up mode. Follow the steps below to set motor limits.



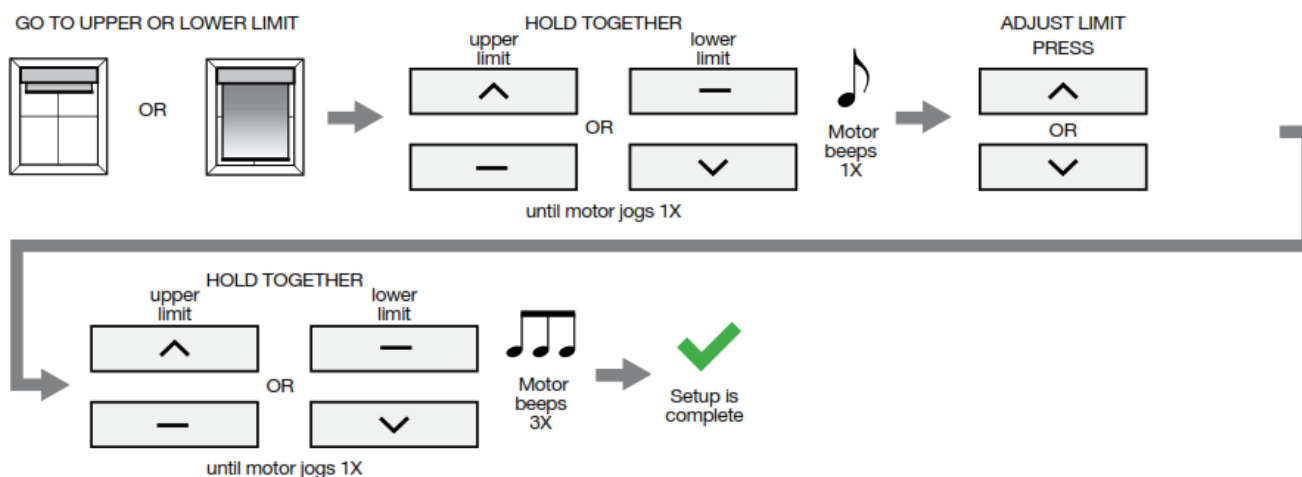
Holding up or down will move the shade automatically



Test shade: Move shade up and down to test upper and lower limits. Refer to “Adjusting Motor Limits” if limits require fine tuning.

STEP 3: ADVANCED PROGRAMMING

ADJUSTING MOTOR LIMITS

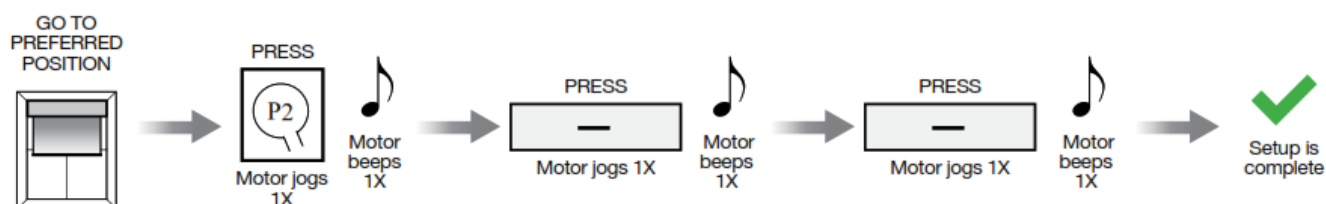


SETTING A PREFERRED POSITION

Allows you to set a third limit position for the shade per channel. Follow the steps below to set a preferred position.

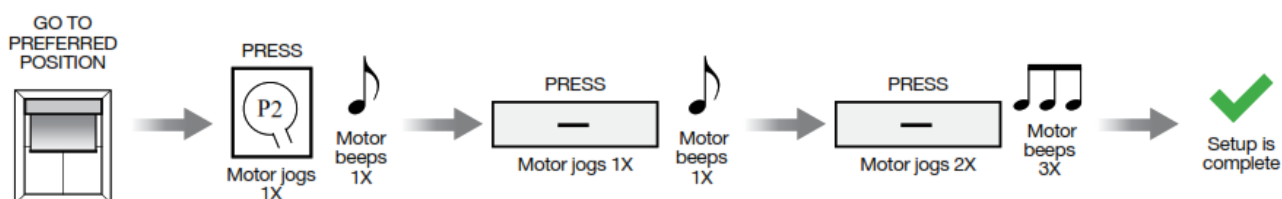


WHILE IN TILT FUNCTION SHADE WILL GO TO LOWER LIMIT FIRST AND THEN PROCEED TO THE PREFERRED POSITION.



When setup is complete, hold the stop button to go to the preferred shade position. Follow the steps above to program different preferred positions to separate channels on a 15 channel remote.

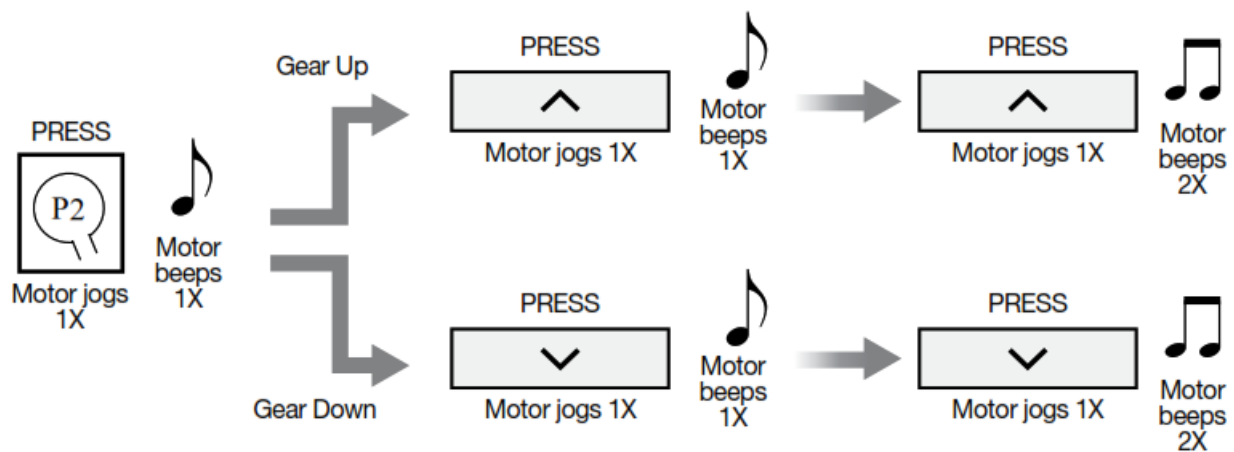
DELETING A PREFERRED POSITION



STEP 3: ADVANCED PROGRAMMING (CONTINUED)

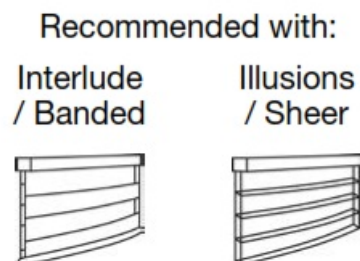
SPEED ADJUSTMENT

Each motor has three speeds. To move between the different speeds, follow the diagram below.



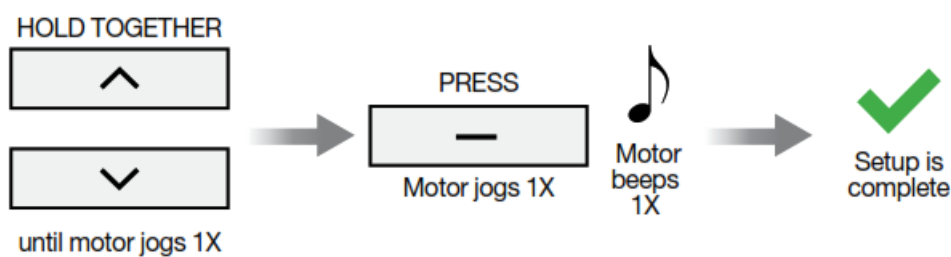
TILT MODE INCREMENTAL MOVEMENT

Tilt mode is used to move the shade in small increments for fine adjustment. It is most effective when programmed with a standard remote (button remote). Follow the steps below to set the shade in tilt mode or remove shade from tilt mode.

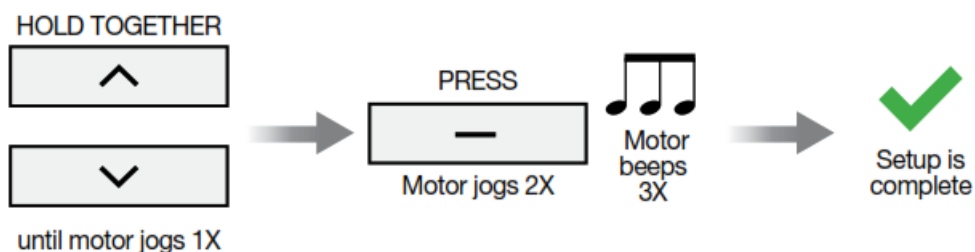


TILT MODE WILL REMAIN ACTIVE IN ALL MODES (Except Step 2: Basic Programming) UNLESS REMOVED

SETTING TILT MODE



DELETING TILT MODE



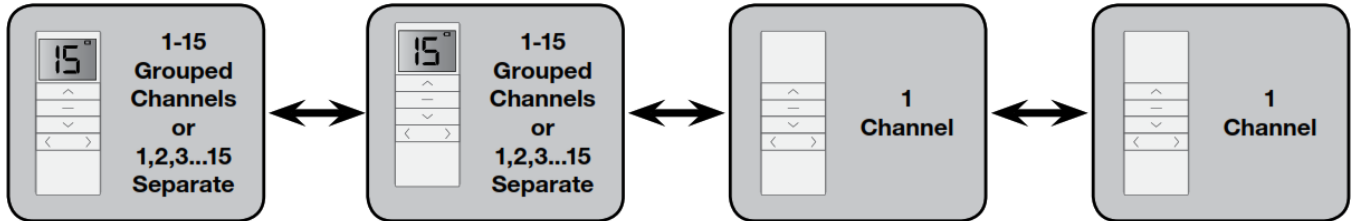


Test shade: press the up or down buttons repeatedly for fine adjustment. To move shade automatically, hold the up or down buttons and release once the shade begins to move.

STEP 3: ADVANCED PROGRAMMING (CONTINUED)

COPYING, DELETING OR GROUPING WITH A REMOTE

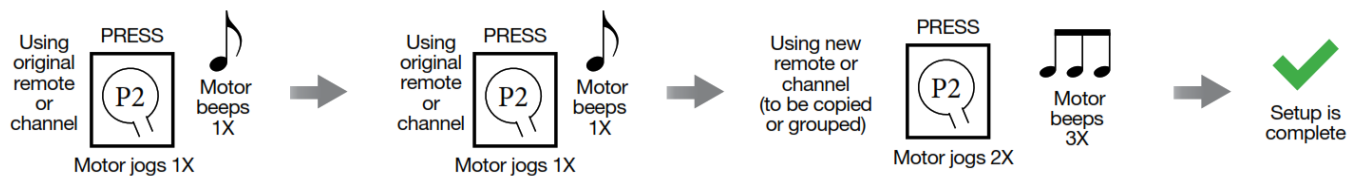
The remote scenario chart below outlines different ways to copy, delete or group channels using separate remotes.



Separate channels can also be programmed this way within one 15 channel remote.

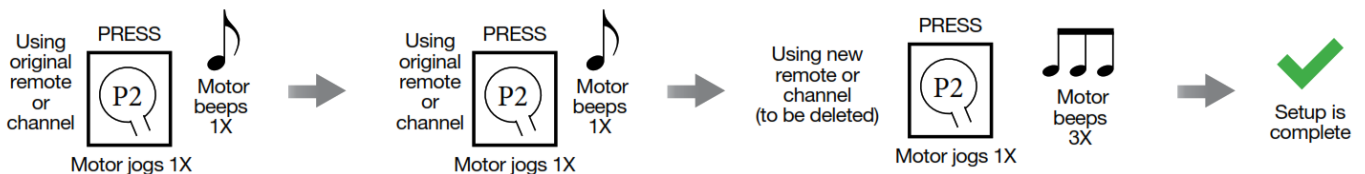
Follow the steps below to copy, delete or group channels.

COPYING/GROUPING CHANNELS



DELETING CHANNELS

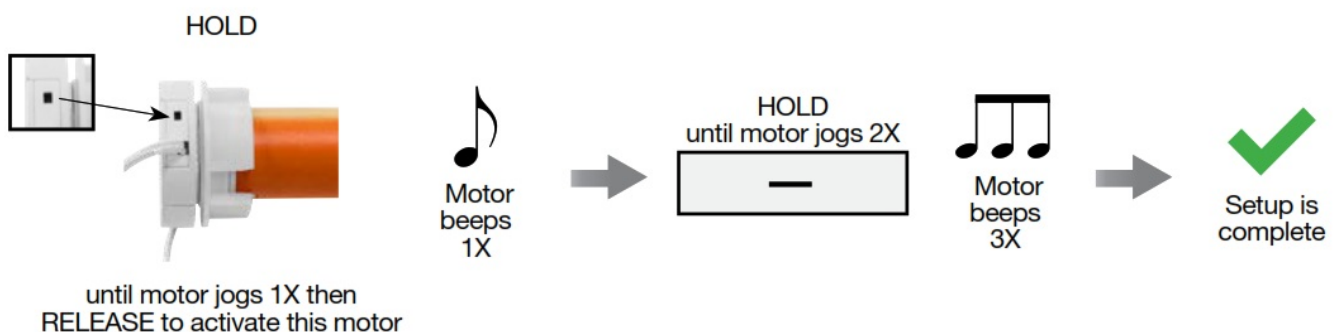
Note: this only works on previously copied/grouped channels.



COPIE OU SUPPRESSION D'UN MOTEUR PRÉCÉDEMMENT PROGRAMMÉ

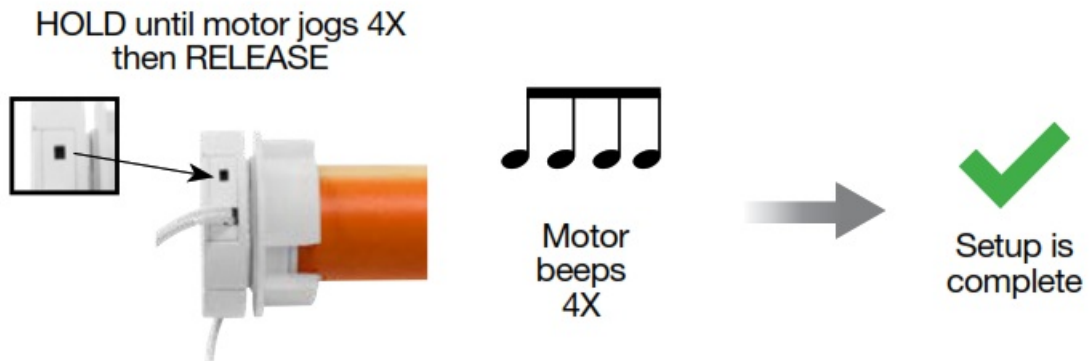


DELETING OR TRANSFERRING GROUPS OF MOTORS ARE RECOMMENDED TO BE DONE USING THE ORIGINAL REMOTE THAT WAS SET UP.



PERFORM FACTORY RESET ON MOTOR

 Only perform a motor reset if necessary.

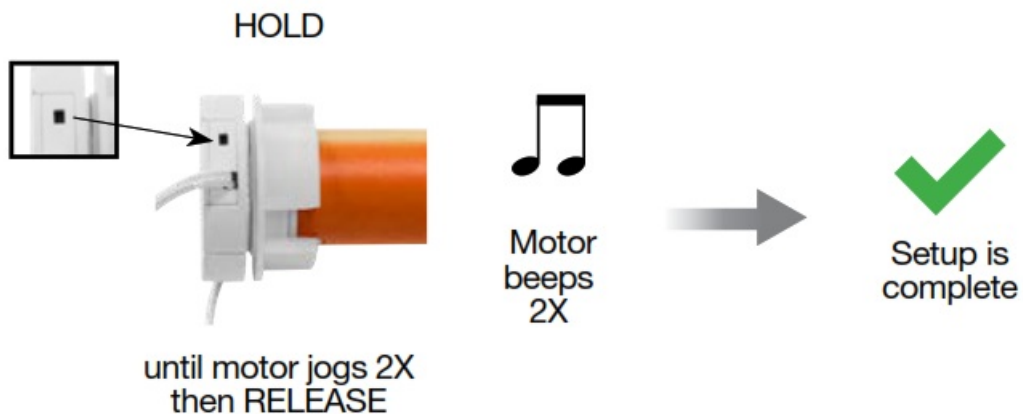


STEP 3: ADVANCED PROGRAMMING (CONTINUED)

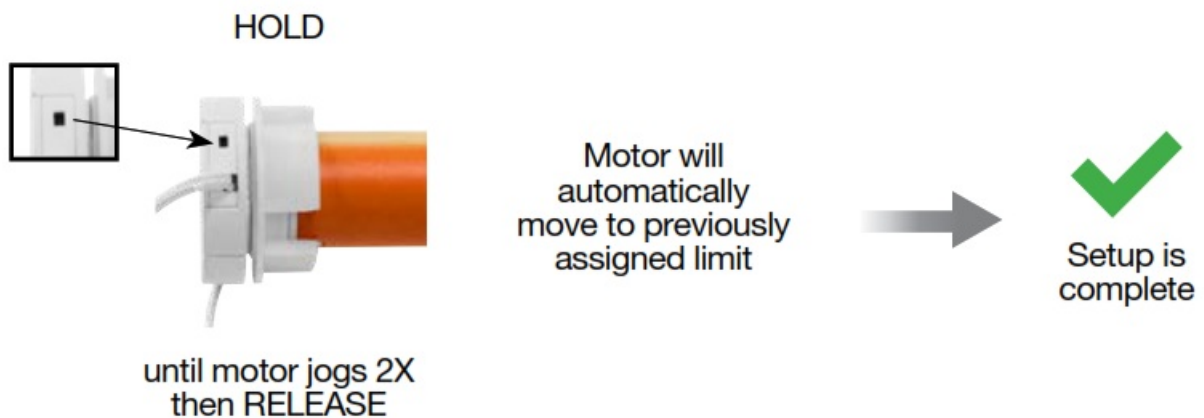
MOTOR SHIELDING

The mode allows a motor's wireless radio signal to become temporarily disabled to save the battery life.

DISABLE SIGNAL:



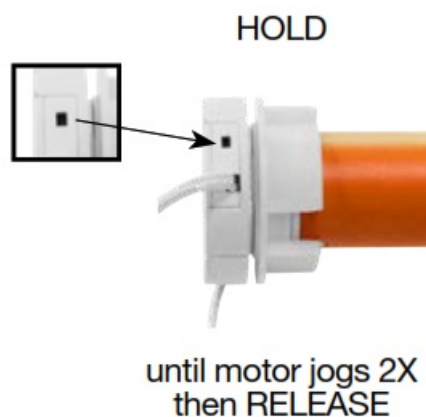
ENABLE SIGNAL:



 If no limits are set, the motor will not move when enabled.

OPERATING SHADE AT MOTOR HEAD

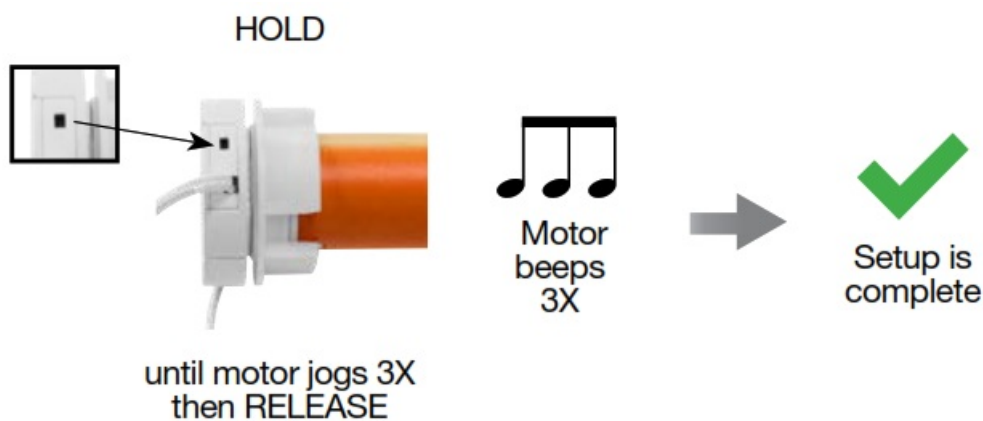
This mode allows you to operate the shade in the event that the remote goes missing or is lost.



Note: pressing the motor setting button while the shade is moving can also stop the motor.

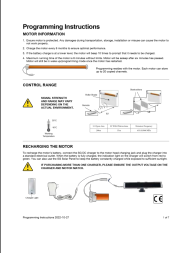
SWITCHING DIRECTION AT MOTOR HEAD

The change of direction can be done after limits have been set.



Test shade: Move shade up and down to ensure that the direction has been changed.

Documents / Resources

	SUN GLOW Programming Resides with the Motor [pdf] Instruction Manual Programming Resides with the Motor, Programming, Resides with the Motor, Motor
---	--