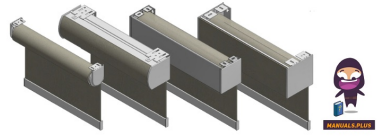


 **SUN GLOW**
Neo EZ Pump
System for
Easier Window
Shade



Sun Glow Neo EZ Pump System for Easier Window Shade Instruction Manual

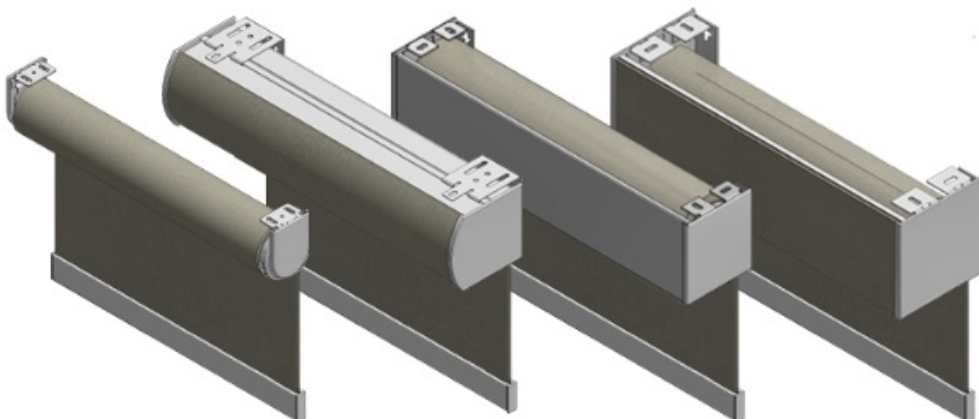
[Home](#) » [SUN GLOW](#) » Sun Glow Neo EZ Pump System for Easier Window Shade Instruction Manual 

Contents

- [1 Sun Glow Neo EZ Pump System for Easier Window Shade](#)
- [2 Tension Adjustment Instructions](#)
- [3 PRE-TENSION ADJUSTMENT – SHADE REMOVED](#)
- [4 Upper Limit Adjustment Instructions](#)
- [5 Specifications](#)
- [6 FAQ](#)
- [7 Documents / Resources](#)
 - [7.1 References](#)



Sun Glow Neo EZ Pump System for Easier Window Shade

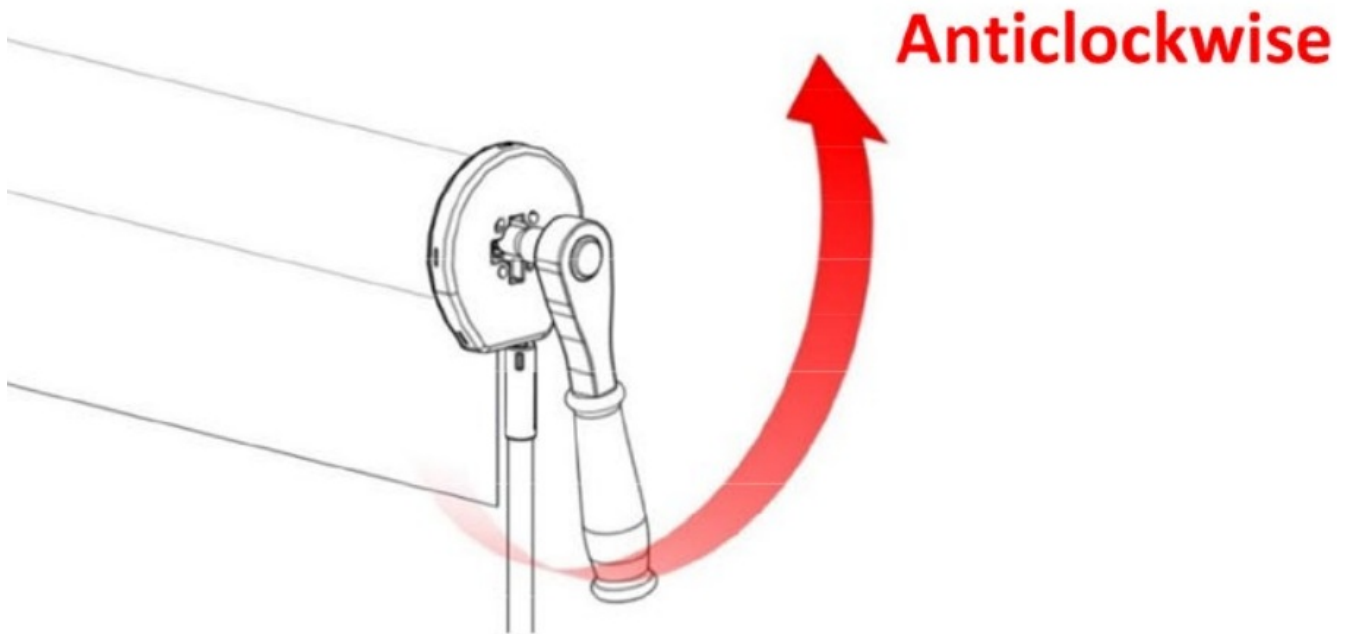


Tension Adjustment Instructions

ADDING PRE-TENSIONS

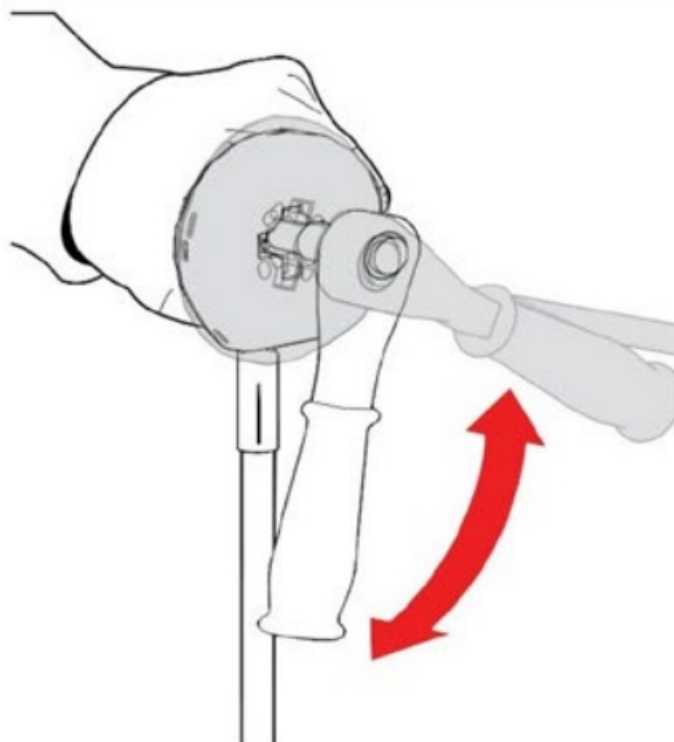
Use a #5 ratchet socket to add or remove tension from the shade

- To add tension use the following guide:
- right side – regular roll: turn counter clockwise
- right side – reverse roll: turn clockwise
- left side – regular roll: turn clockwise
- left side – reverse roll: turn counter clockwise



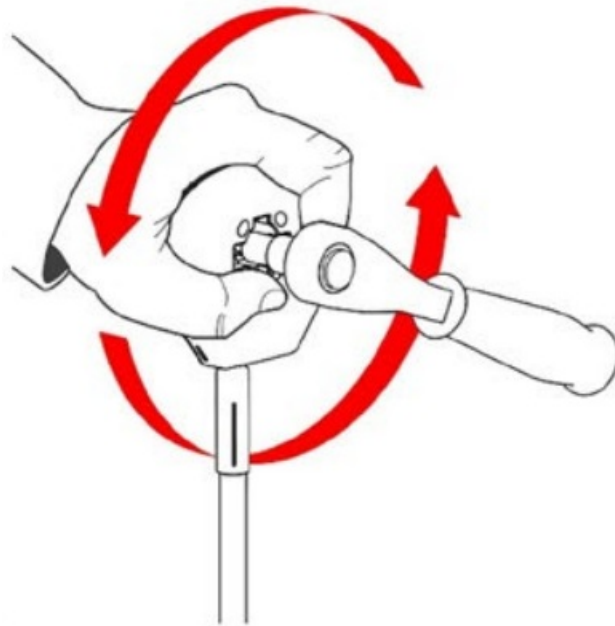
PRE-TENSION ADJUSTMENT – SHADE REMOVED

- Hold the shade and use the Socket Ratchet to rotate the adjusting shaft (and wand control head) in an anti-clock wise direction enough to release the booster lock. The ratchet will spring back under the spring tension.

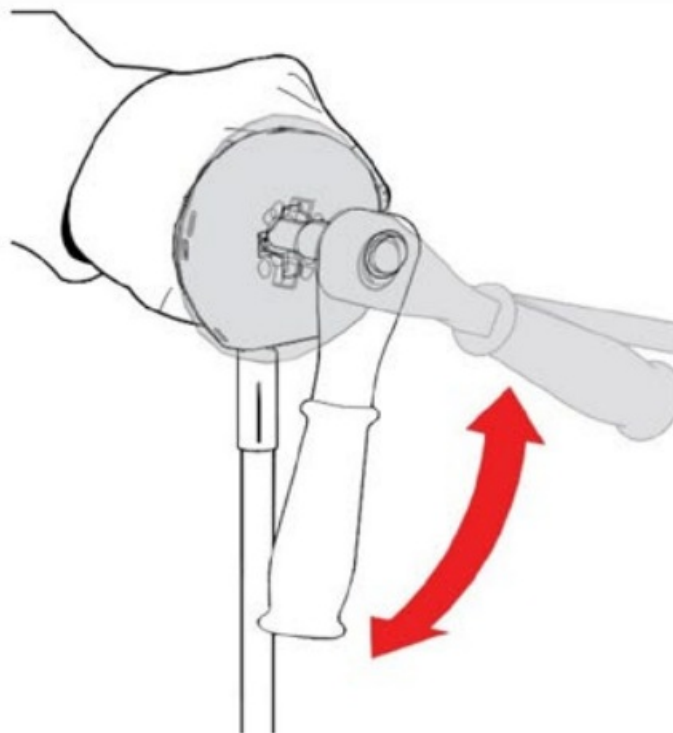


- Hold the shade and Wand Control Head together. To add tension, rotate the Socket Ratchet for the number of turns desired in a counter clockwise. (Note, to remove tension allow the spring to unwind in the clockwise

direction)



- To re-lock the booster and shade, release the wand control and rotate the Socket Ratchet enough to re-engage the lock (approx. $\frac{1}{4}$ turn). The ratchet should spring back under the spring tension to the locked position.



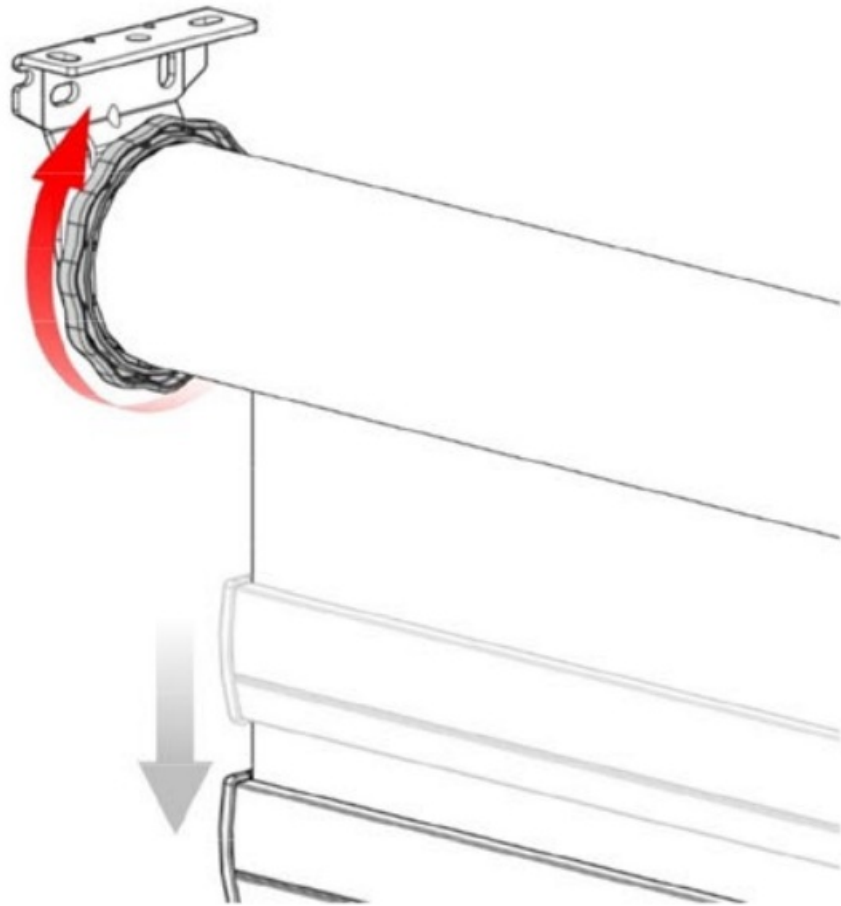
Upper Limit Adjustment Instructions

(**note:** lower limit not available)

STEP 1 – SET-TOP LIMIT

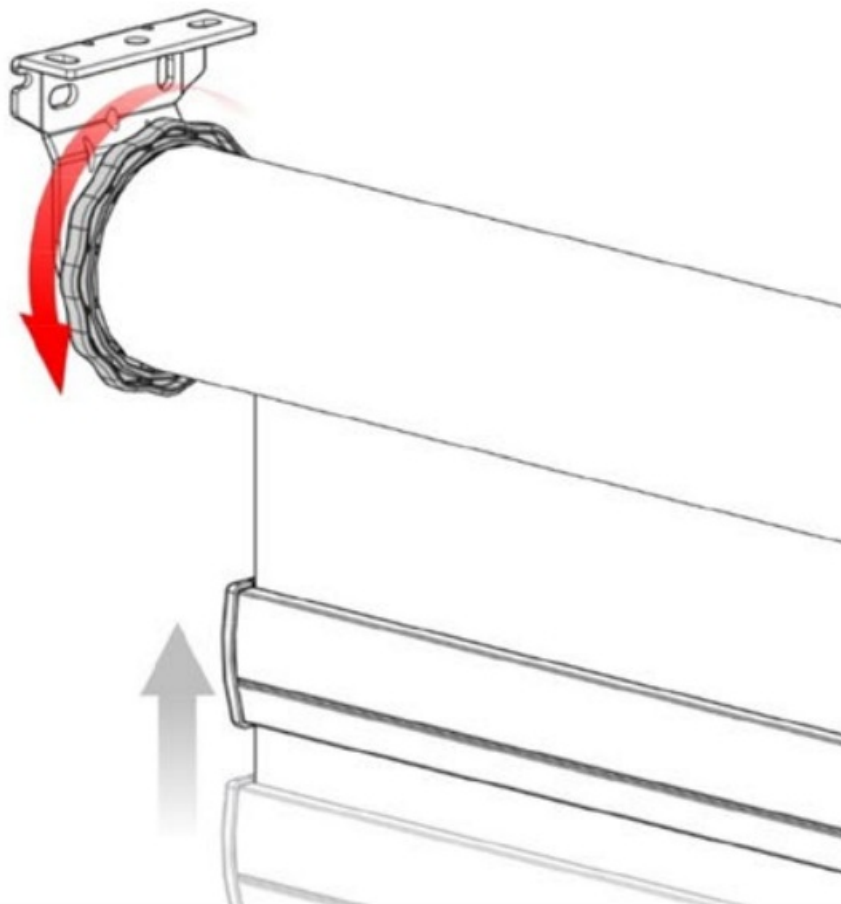
Ensure Shade is fully raised

- To lower the top limit position rotate the limiter head so that the Shade moves down.



- To raise the top limit position rotate the limiter head so that the Shade rises.

NOTE: The shade must not be locked by the spring to allow the bottom rail to move up. See the prior page for unlocking instructions.



- Standard back roll shown, reverse for front roll

Specifications

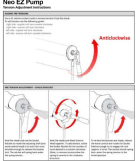
- Product Name: Neo EZ Pump
- Tension Adjustment Instructions
- Upper Limit Adjustment Instructions (lower limit not available)
- Date: 2024-01-03

FAQ

Q: Can I adjust both the upper and lower limits on the Neo EZ Pump?

A: No, only the upper limit is adjustable. The lower limit adjustment is not available for this product.

Documents / Resources

	<p>Sun Glow Neo EZ Pump System for Easier Window Shade [pdf] Instruction Manual Neo EZ Pump System for Easier Window Shade, EZ Pump System for Easier Window Shade, Pump System for Easier Window Shade, Easier Window Shade, Window Shade, Shade</p>
---	---

References

- [User Manual](#)

[Manuals+](#), [Privacy Policy](#)

This website is an independent publication and is neither affiliated with nor endorsed by any of the trademark owners. The "Bluetooth®" word mark and logos are registered trademarks owned by Bluetooth SIG, Inc. The "Wi-Fi®" word mark and logos are registered trademarks owned by the Wi-Fi Alliance. Any use of these marks on this website does not imply any affiliation with or endorsement.