

SUMMIT SCENTING AE103 Plug-In Aroma Diffuser



SUMMIT SCENTING AE103 Plug In Aroma Diffuser Instruction Manual

[Home](#) » [SUMMIT SCENTING](#) » SUMMIT SCENTING AE103 Plug In Aroma Diffuser Instruction Manual 

Contents

- 1 SUMMIT SCENTING AE103 Plug-In Aroma Diffuser
- 2 Specification
- 3 Product Information
- 4 Installation method
- 5 Operating instructions
- 6 Concentration and consumption
- 7 Troubleshooting
- 8 Equipment cleaning
- 9 Documents / Resources
 - 9.1 References
- 10 Related Posts

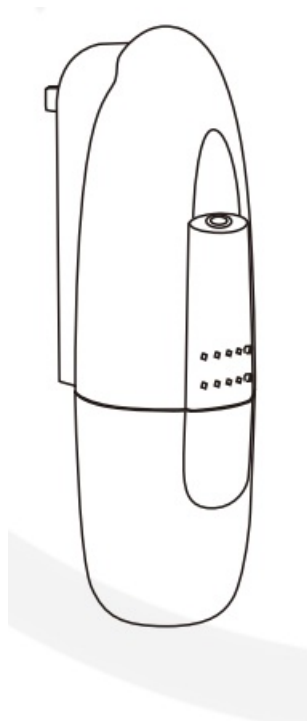


SUMMIT SCENTING AE103 Plug-In Aroma Diffuser

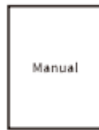


Specification

1. Model: AE103
2. Size: 122*65*214mm
3. Bottle: 100ml
4. Voltage: AC100V-240V 50/60HZ
5. Power: 2W
6. Coverage: 25rrl/75m3 /2650ft3
7. N.W.: 300g
8. Material: Plastic



Machine



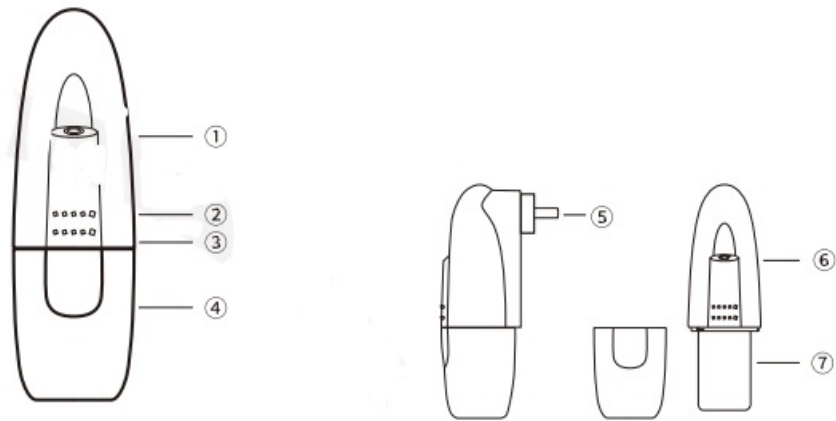
Manual



Oil bottle

Product Information

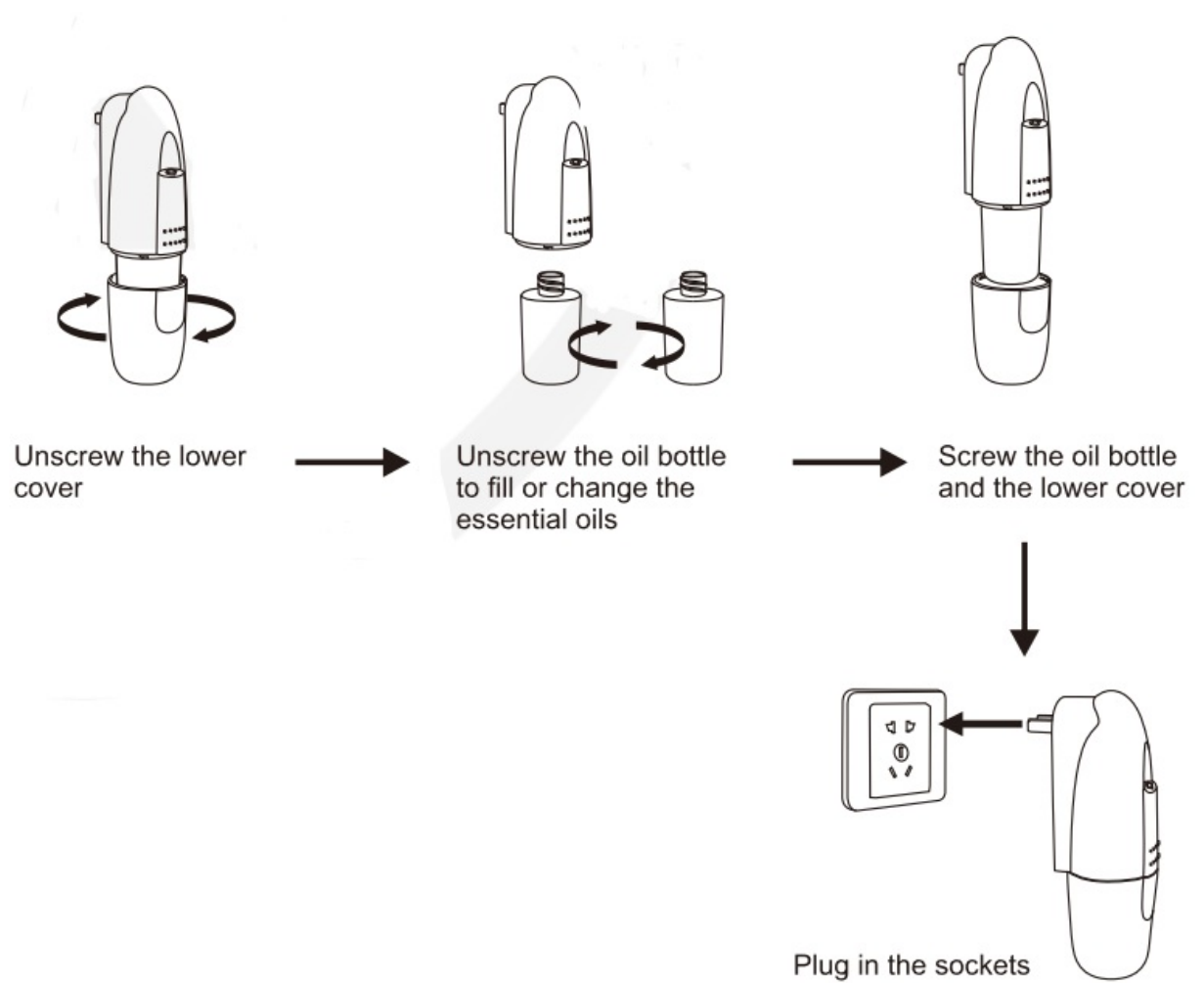
1. Upper shell
2. Grade button
3. Mode
4. Powershell
5. Plug
6. Atomized head
7. Oil bottle



Installation method

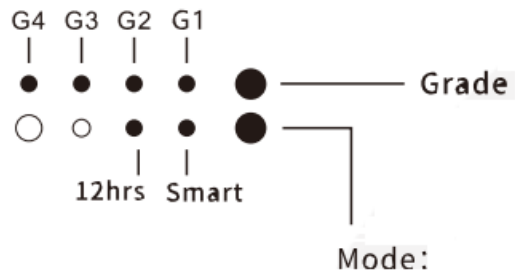
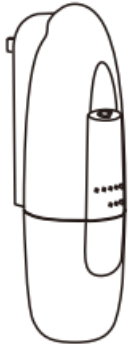
Application place

- Hotel
- Meeting room
- Toilet
- Aisle
- Brand store



Operating instructions

Button control version: easy to handle and light sensor mode



-12hrs mode: It will automatically switch on/off for every 12 hours.

-Smart mode: when sensing enough light, it will automatically switch on/off for every 12 hour. And it do not work if no light is sensed.

Note: When you turn on/off the machine, the time will be recalculated.

Mode

- 12hrs mode: It will automatically switch on/off for every 12 hours.
- Smart mode: when sensing enough light, it will automatically switch on/off every 12 hours. And it does not work if no light is sensed.

Note: When you turn on/off the machine, the time will be recalculated.

Concentration and consumption

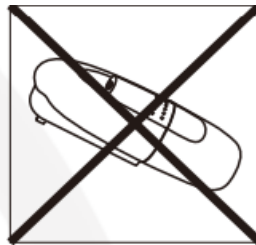
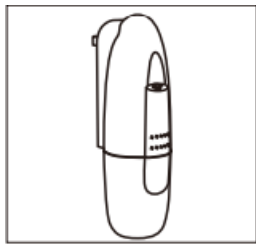
Grades	Work time(s)	Stop time(s)	Consumption(g/h)
G1	15s	285s	0.07
G2	15s	135s	0.15
G3	15s	85s	0.23
G4	15s	60s	0.30

Notes

1. The working time above of each grade is 15.
2. Different grades and oils may have different consumption.

Warning

1. Please keep the machine vertical. Tilt or lying flat may cause the oil to overflow. The efficiency of the machine may be affected.
2. Shall not modify, disassemble, or repair the machine.
3. Do not use this product under high humidity and high-pressure conditions.
4. It is better to screw the machine on the wall than just stick it via tape; otherwise, the machine will be easy to fall.



Troubleshooting

Before having the machine repaired, please try to diagnose the problem first with the below instructions

Symptom	Remedy
Does not diffuse	<ul style="list-style-type: none"> - Whether the machine is in “not working period”. If yes, it won't spray. - Check whether the air pump is damaged. If yes, replace it with a new one.
Spray little	<ul style="list-style-type: none"> - Check whether the gasket is damaged or loose. Please adjust it or replace it with a new one. - Check whether the atomized core is plugged; clear it with alcohol or replace it with a new one
Oil spill	<ul style="list-style-type: none"> - Check whether the atomized head is damaged
Oil overflow	<ul style="list-style-type: none"> - Check whether the oil bottle is loose, please install it correctly - Check whether the gasket of the atomized head is damaged; if yes, please replace it with another one. - Please keep the machine vertical; Tilt or lie flatly will cause the oil overflow

Equipment cleaning

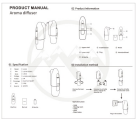
The machine needs to be cleaned when the below situation happens:

1. You're about to change to another kind of essential oils
2. The atomization volume goes weak

Cleaning steps

1. Unscrew the lower cover and take out the oil bottle
2. Find a larger container and fill the industrial alcohol up. Then soak the bottle for 5-10 minutes.
Airing the bottle.

Documents / Resources

	SUMMIT SCENTING AE103 Plug In Aroma Diffuser [pdf] Instruction Manual AE103, AE103 Plug In Aroma Diffuser, Plug In Aroma Diffuser, Aroma Diffuser, Diffuserv
---	---

References

- [User Manual](#)

This website is an independent publication and is neither affiliated with nor endorsed by any of the trademark owners. The "Bluetooth®" word mark and logos are registered trademarks owned by Bluetooth SIG, Inc. The "Wi-Fi®" word mark and logos are registered trademarks owned by the Wi-Fi Alliance. Any use of these marks on this website does not imply any affiliation with or endorsement.