



# Sumaote WC202SUUS Magic Home App Remote Control User Manual

[Home](#) » [Sumaote](#) » Sumaote WC202SUUS Magic Home App Remote Control User Manual 

## Contents

- [1 Sumaote WC202SUUS Magic Home App Remote Control](#)
- [2 Product Size And Parameters](#)
- [3 Installation Instructions](#)
- [4 APP installation and Wi-Fi network connection](#)
- [5 Smart 2.4G remote controller](#)
- [6 How do I connect to Google Assistant](#)
- [7 How do I connect to Alexa](#)
- [8 Documents / Resources](#)
  - [8.1 References](#)

# *Sumaote*

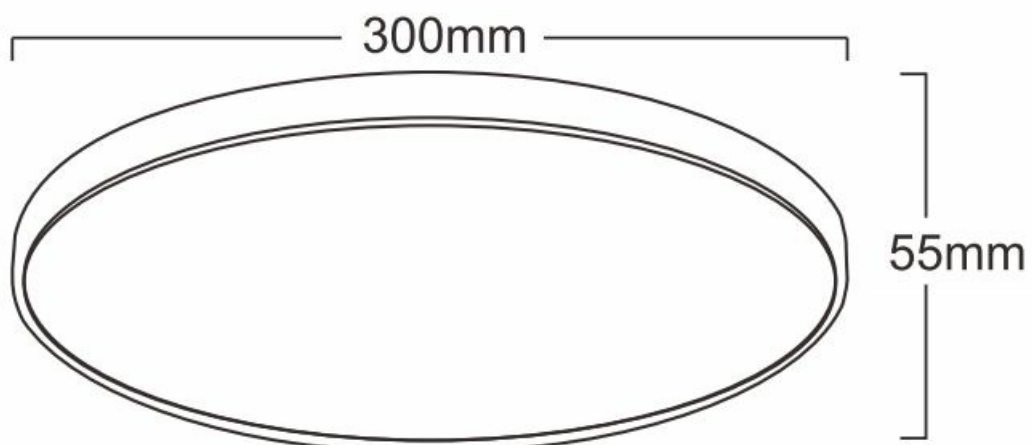
**Sumaote WC202SUUS Magic Home App Remote Control**



Thank you for choosing the smart Ceiling Light.  
Please read the user manual carefully and keep it for future reference.

## Product Size And Parameters

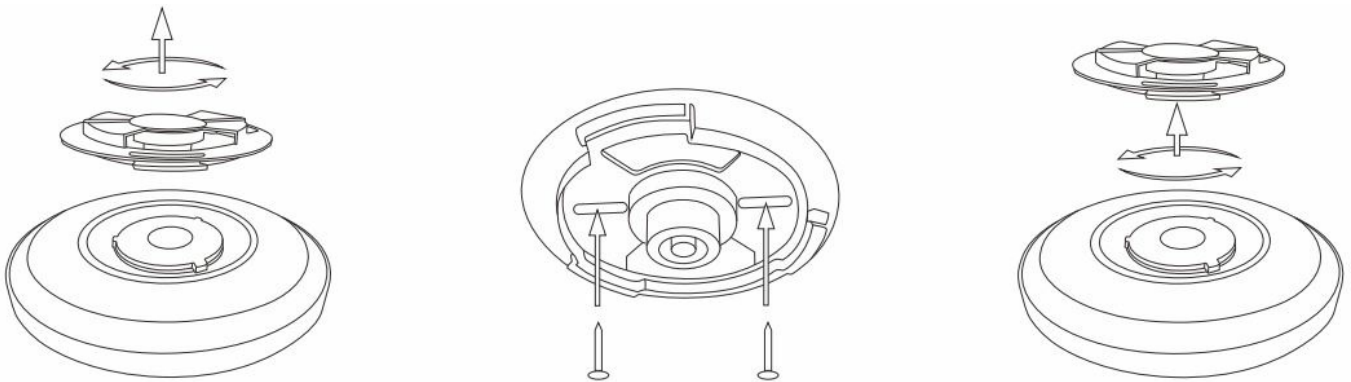
### Product size



## Product parameters

- **Product name:** Ceiling Light
- **Wattage:** 30W
- **Connection Methods:** WiFi+BLE+2.4G
- **APP:** Magic Home Pro
- **Suitable Phone OS:** Android 6.0/IOS11.0 or later
- **Color Temperature:** 2700K-6500K
- **Working Temperature:** -20TO+45°C
- **Effective Romoted Distance:** Visual range40m
- **Voltage:** 100-130VAC,50/60HZ(Low voltage)
  - 190-240VAC,50/60HZ( High voltage)
- **Average Life:** 20000H

## Installation Instructions



- **Step 1:** Rotate the buckle base out
- **Step 2:** Make the buckle base positioned and drilled in the ceiling, and then link the fire line and null line, fixed with screws at last
- **Step 3:** Embed the lamp into the base, rotate and fix it

## APP installation and Wi-Fi network connection

**Important:** connect your phone to home wifi network(2.4GHz WiFi only)

**Install the App:**



or



## Magic Home Pro

- Search for “Magic Home Pro” on the App Store or Google Play Store, or scan the QR code below to download it.

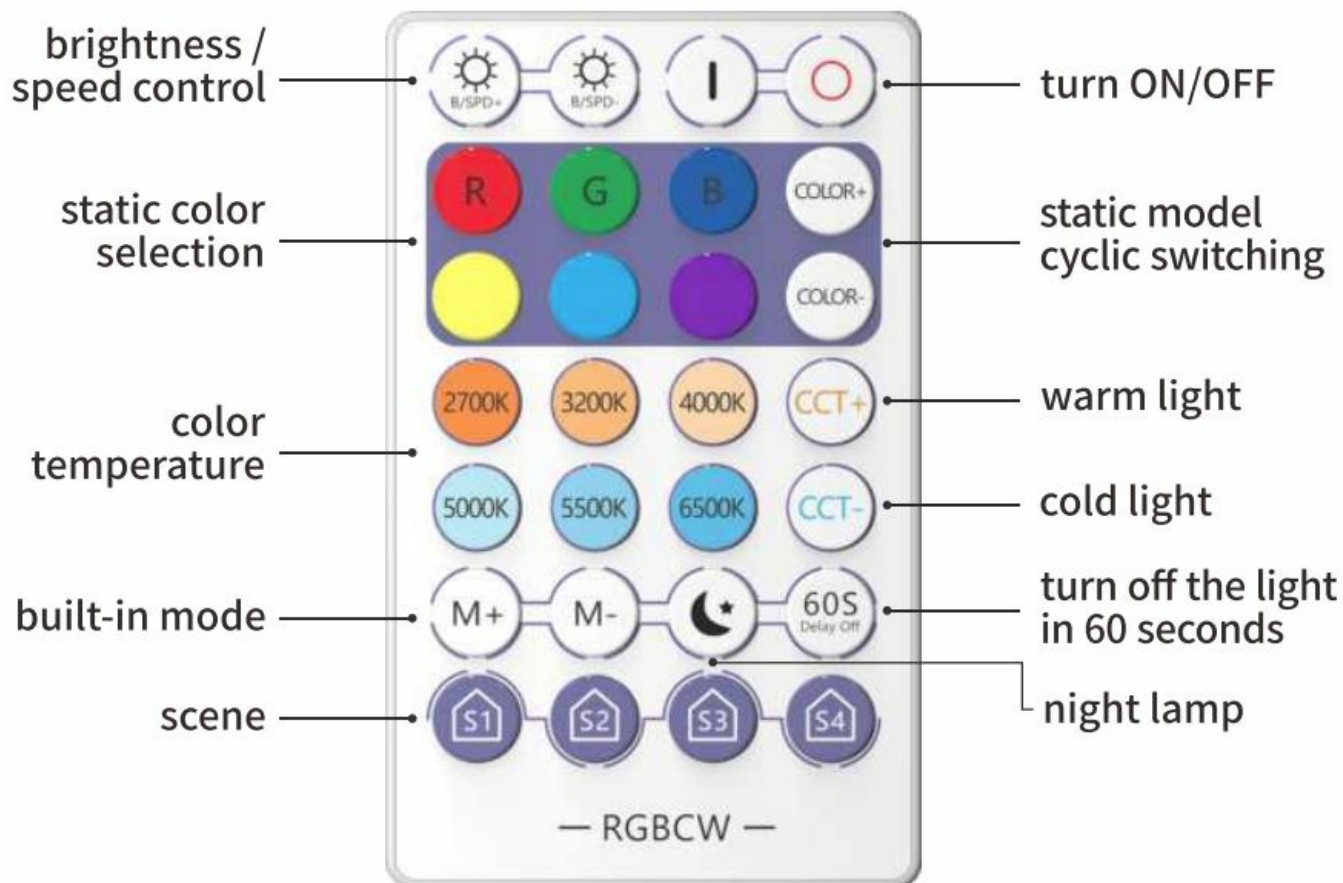
### How to connect Smart Device to my home network?

1. Turn on the bluetooth.
2. Run the newest App “Magic Home Pro”. Register/Login your Magic Home account
3. Click “+” button on top right corner and choose the ceiling light which you want to connect. (If can't found, reset your ceiling light)
4. connect device to Wi-Fi network. (choose your router and login your password, ensure the router is 2.4GHZ)
5. After connecting successfully, you can rename the device name at your preference and click “complete”.
6. Click the light name to enter the operation page, you can dimming, change color and set timing of the light.

### How to reset the Smart ceiling light?

1. Power on the ceiling light.
2. Wait 3-5 seconds and then power off the ceiling light
3. At the end of the 4th time when you turn on the ceiling light, it will emit strobe for a few seconds, after that it will become fully bright at which point the reset is complete. Once you have reset the ceiling light, you should be able to see its wifi IP “LEDnet”\*\*\*\*.., again under your mobile device's wifi settings. (If not, please restart your wifi, wait for a while and you will see it).

### Smart 2.4G remote controller



- The remote-controller must be purchased separately

#### Pair the remote control:



Pair the remote control

- After the lamp is powered on, press the power button for 5 seconds immediately (within 3 seconds).
- When the lamp flashes slowly for 3 times, it means the pairing is successful.

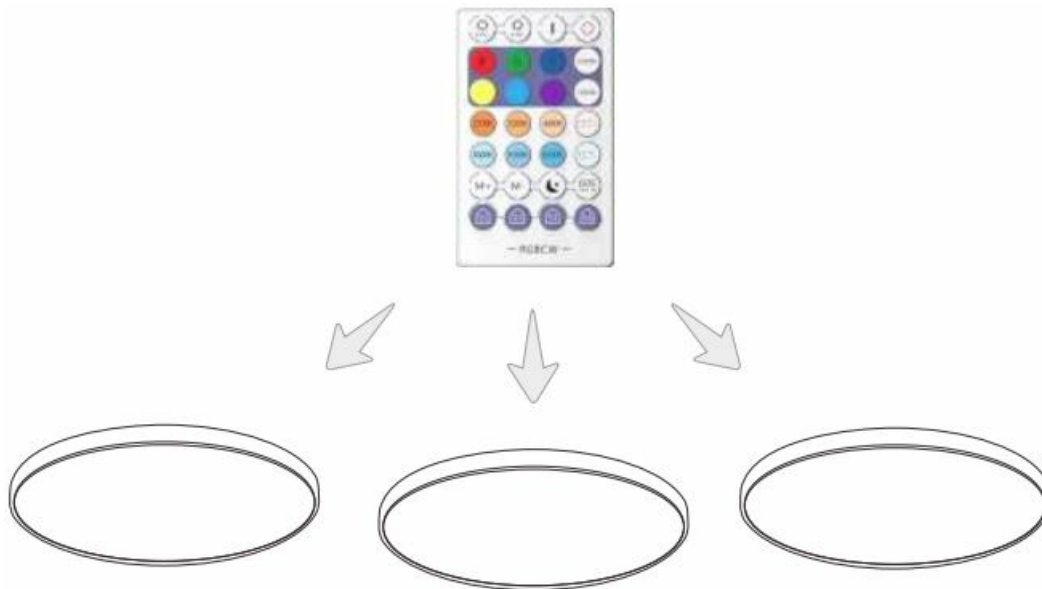
#### Remove the remote control



## Remove the remote control

- After the lamp is powered on, press the power button for 5 seconds immediately (within 3 seconds). When the lamp flashes for 3 times, it means the removing is successful.

## One-to-many control

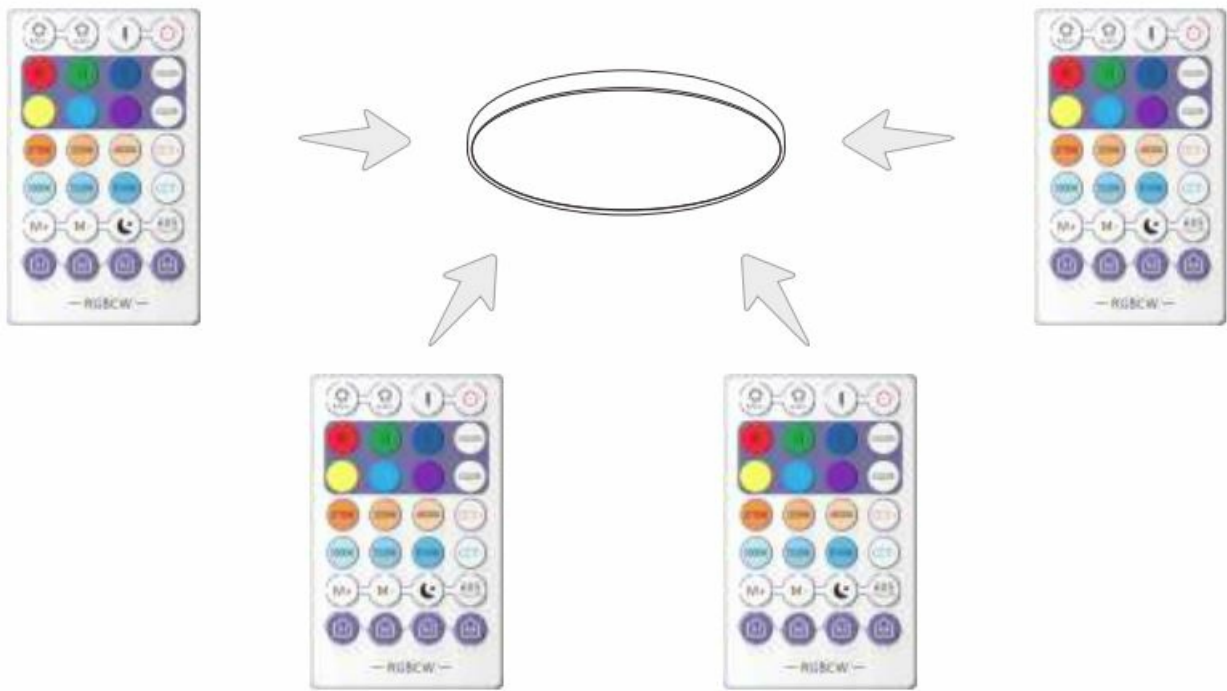


- The remote control can be paired with multiple WIFI lamps at the same time, and multiple WIFI lamps can be controlled with one key without limitation.

**Note:** Please refer to the steps of pairing or removing the remote control.

## Many-to-one control





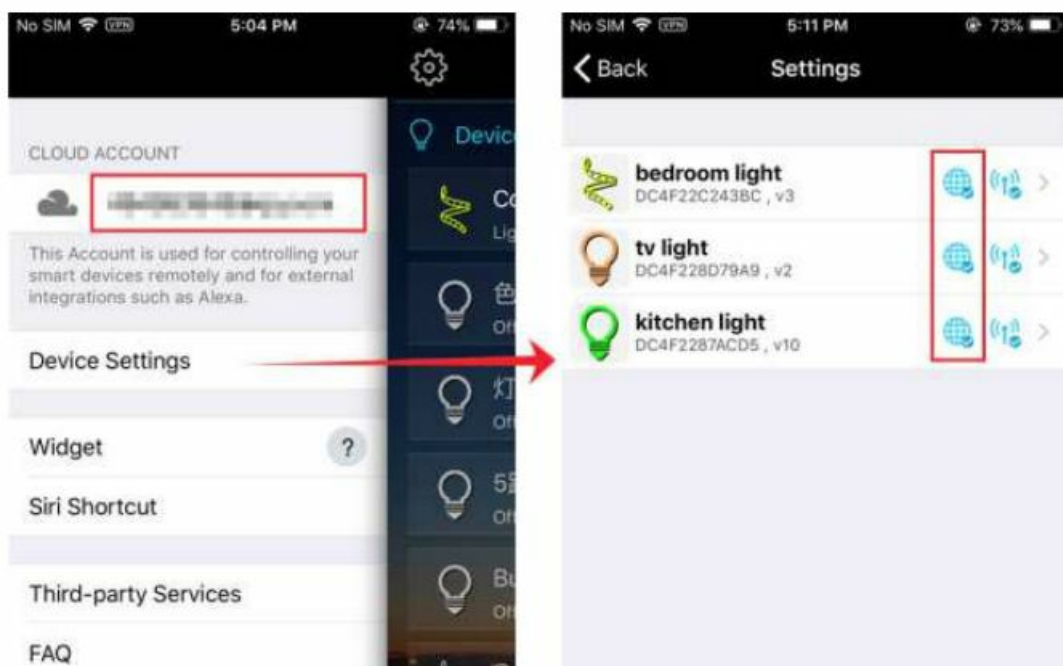
- A single WIFI lamp can be paired with multiple remote controls, and each remote control can control the same WIFI lamp separately. ( a single lamp can support up to 16 remote controls)

**Note:** Please refer to the steps of pairing or removing the remote control.

## How do I connect to Google Assistant



**Step 1:** Creating your Magic Home cloud account.

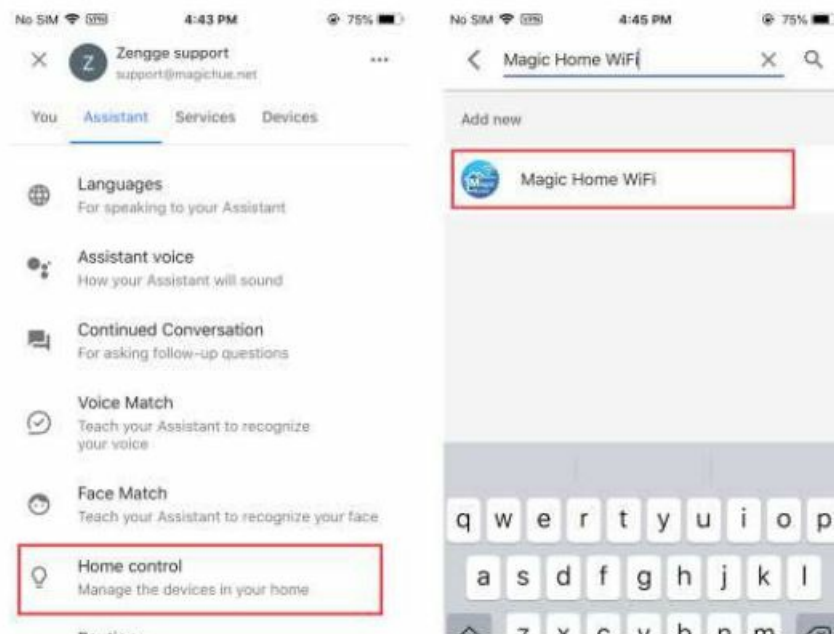


- In order to control your smart light with the Google Assistant or control them remotely, you need to create a Magic Home cloud account and signed in.

**Step 2:** Add your light and modify the name.

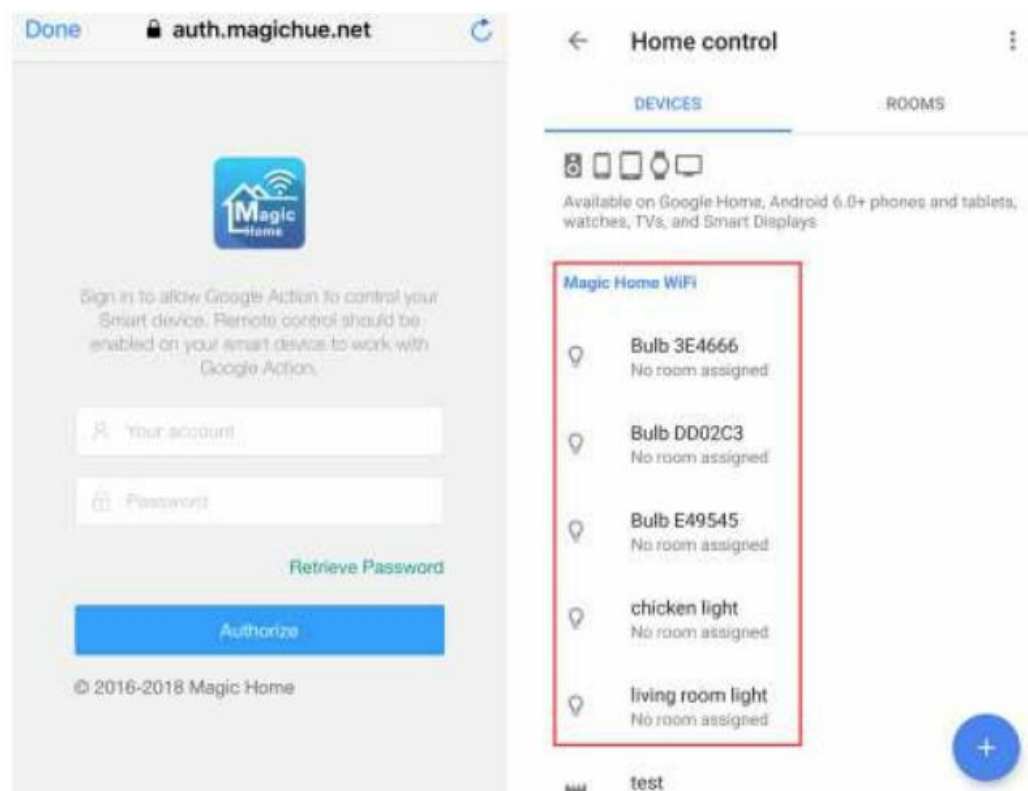
- Make sure there's at least one smart light in device list, and enabled your lights for remote control.
- In the "Home" page, long press on the light you wish to rename.

**Step 3:** Add Home Control Action.



- Add device in Home Control of the Home app. Select "Magic Home WiFi".

**Step 4:** Login with your app account.



- Enter your app account and password to finish the account linking. (using your Magic Home cloud account you



used in step 1).

- Your device should be listed in Home Control device list now.

### **Step 5: Control your light.**

- At this point, you're all setup. You can now control your lights by issuing voice commands.

### **Supported Commands**

Say "Ok Google " or "Hey Google", then..

- Turn on < light name>
- Dim «light name>
- Brighten <light name>
- Set <light name> to [50%]
- Dim/Brighten < light name> by|50%]
- Turn<light name> [color]
- Turn on/off all the lights
- Is<light name> on?

### **Changing colors on your lights**

Color Options for Google Home control of your smart device:

- Blue
- Fuchsia
- Lavender
- Orange
- Salmon
- Turquoise
- Crimson
- Gold
- Lime
- Purple
- Sky Blue
- Violet
- Cyan
- Green
- Magenta
- Red
- Teal
- Yellow

### **For Scenes**

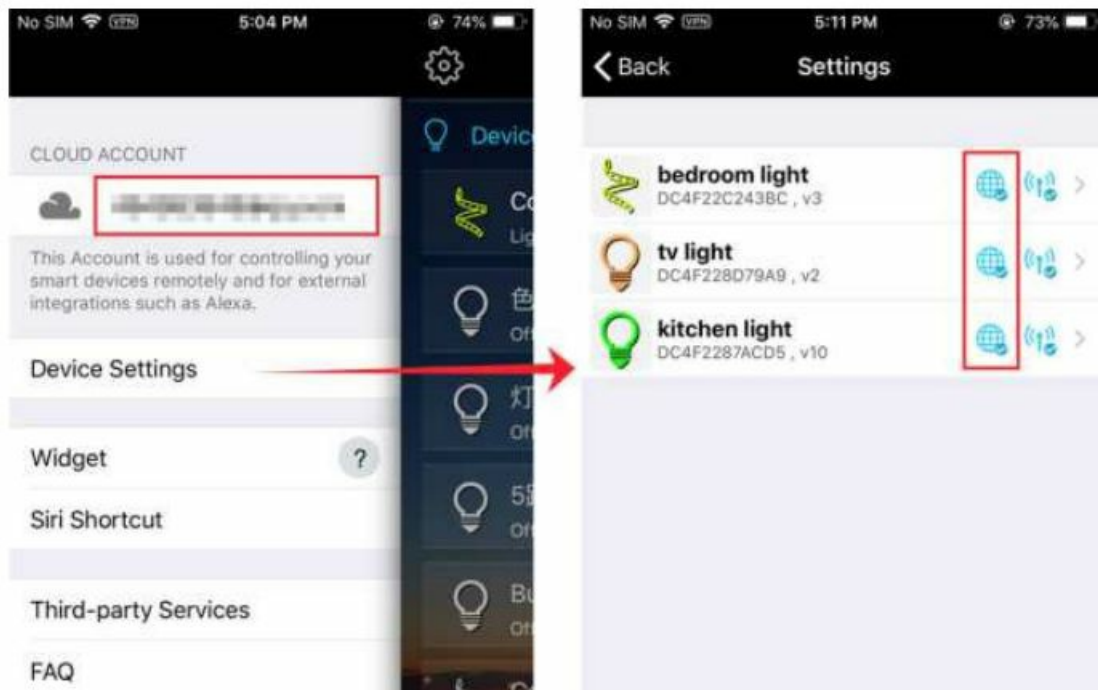
You can activate scenes by following voice commands:

- Hey Google activate {scene name}
- Hey Google turn on {scene name}

## How do I connect to Alexa



**Step 1:** Creating your Magic Home cloud account.

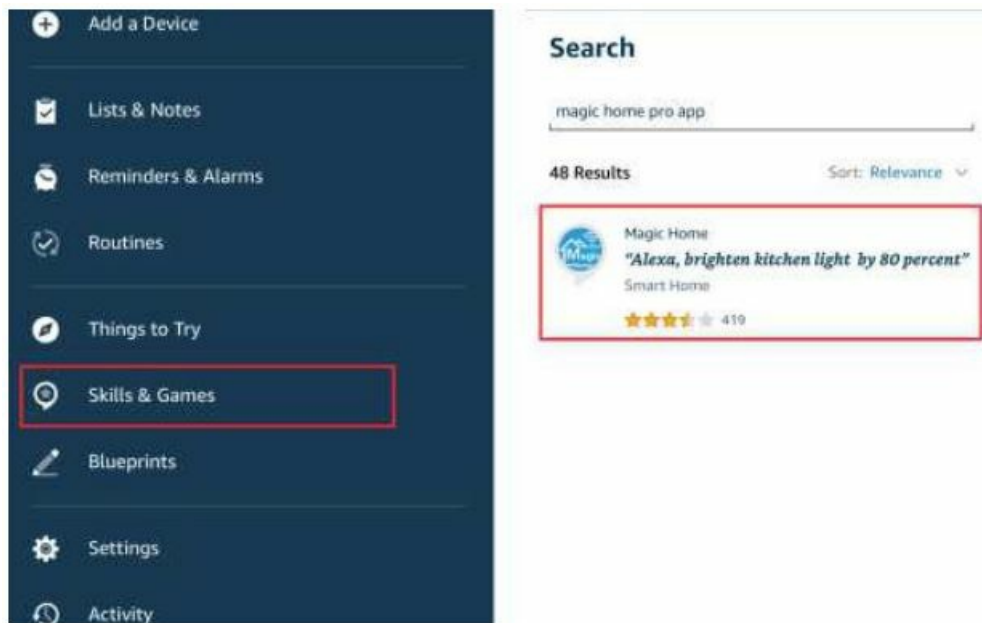


- In order to control your smart light with the Amazon Echo or control them remotely, you need to create a Magic Home cloud account and signed in.

**Step 2:** Add your light and modify the name.

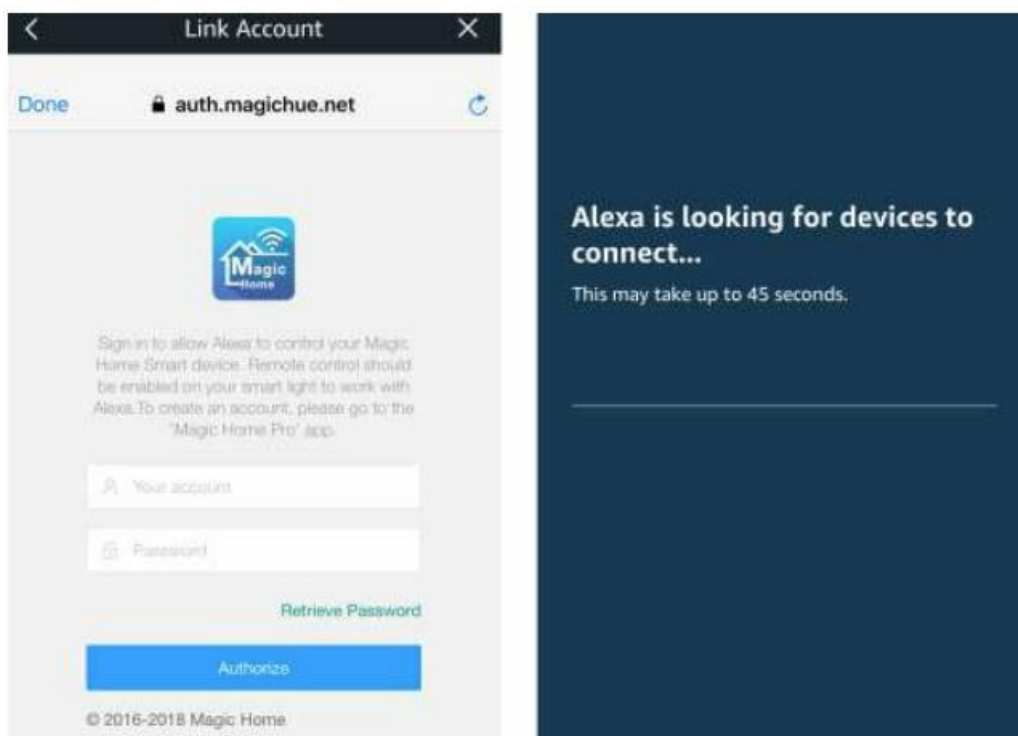
- Make sure there's at least one smart light in device list, and enabled your lights for remote control.
- In the "Home" page, long press on the light you wish to rename.

**Step 3:** Enable Alexa Skill.



- The next step is to download the Amazon Alexa app. Open the Amazon Alexa app and under the skills section, search for the “Magic Home” skill.

#### Step 4: Login and Discover Devices.



- Enable the skill and sign in using your Magic Home cloud account you used in step 1.
- The next step is to discover your smart lights from the Alexa app.
- You can say “Alexa, discover devices”.
- Once Alexa has completed discovering your smart lights, they will appear in the Smart Home section of the Alexa app.

#### Step 5: Control your light.

- At this point, you're all setup. You can now control your lights by issuing voice commands.

### **Supported Commands:**

These are some of the currently supported Alexa voice commands for the smart light.

- Alexa, set [light name] to [0-100]%
- Alexa, turn [light name] on/off
- Alexa, dim/brighten [light name]
- Alexa, increase/decrease [light name]
- Alexa, set the [light name] light to red
- Alexa, change the [light name] to the color blue

### **For RGBW Light (Change to Warm White)**

- Alexa, set the [light name] to warm white

### **For CCT or RGBCW Light (Change to Color temperature)**

- Alexa, make the [light name] warm white
- Alexa, change the [light name] to the cool white
- Alexa, set the [light name] to daylight

### **Changing colors on your lights**

Color Options for Alexa control of your smart device:

- Blue
- Fuchsia
- Lavender
- Orange
- Red
- Teal
- Crimson
- Gold
- Lime
- Pink
- Salmon
- Turquoise
- Cyan
- Green
- Magenta
- Purple
- Sky Blue

- Violet
- Yellow

## For Scenes

You can activate scenes by following voice commands:

- Alexa, start {scene name}
- Alexa, turn on {scene name}

## Scan



Instructions



Magic Home Pro

---

## Documents / Resources



[Sumaote WC202SUUS Magic Home App Remote Control](#) [pdf] User Manual  
WC202SUUS Magic Home App Remote Control, WC202SUUS, Magic Home App Remote Control, Home App Remote Control, App Remote Control, Remote Control, Control

## References

- [User Manual](#)