

Sudio R3 Bluetooth Headphone



Sudio R3 Bluetooth Headphone Owner's Manual

[Home](#) » [Sudio](#) » Sudio R3 Bluetooth Headphone Owner's Manual 

Contents

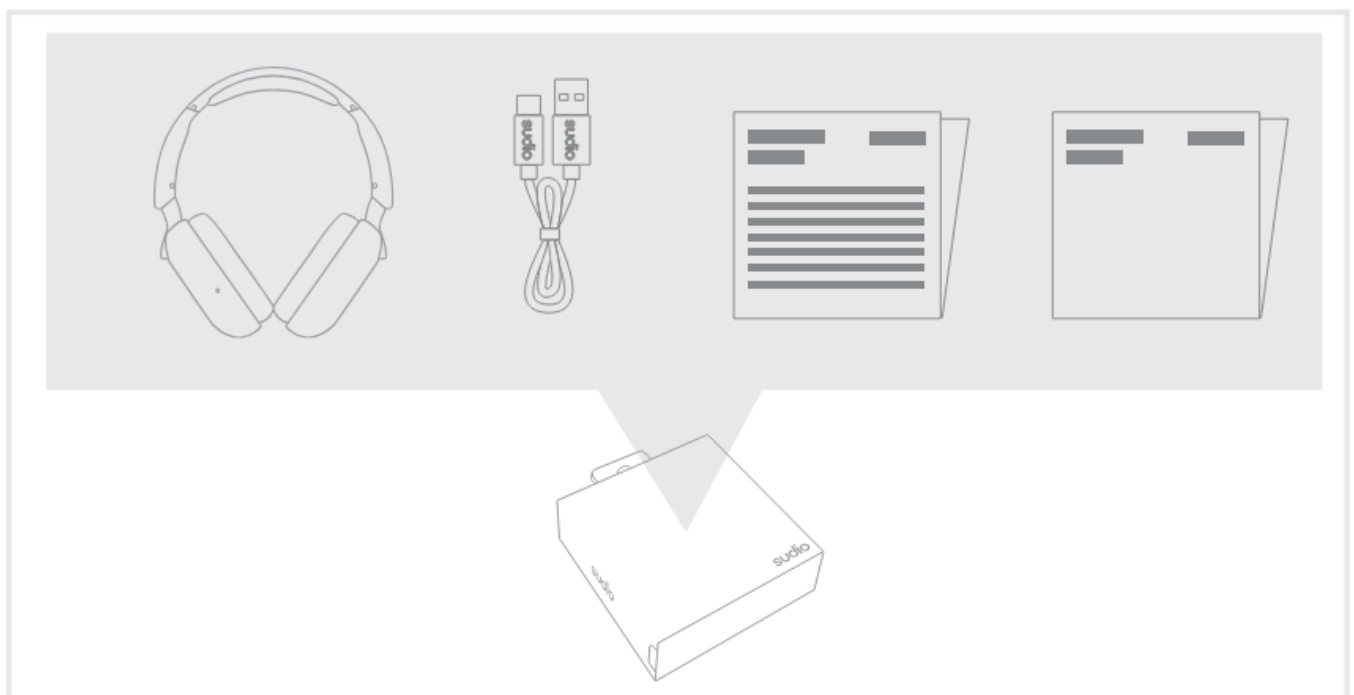
- [1 Sudio R3 Bluetooth Headphone](#)
- [2 PRODUCT CONTENTS](#)
- [3 FUNCTIONS](#)
- [4 FCC STATEMENT](#)
- [5 Documents / Resources](#)
 - [5.1 References](#)
- [6 Related Posts](#)

sudio

Sudio R3 Bluetooth Headphone



PRODUCT CONTENTS



FUNCTIONS



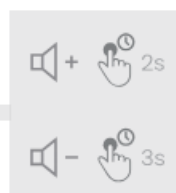
1.



2.

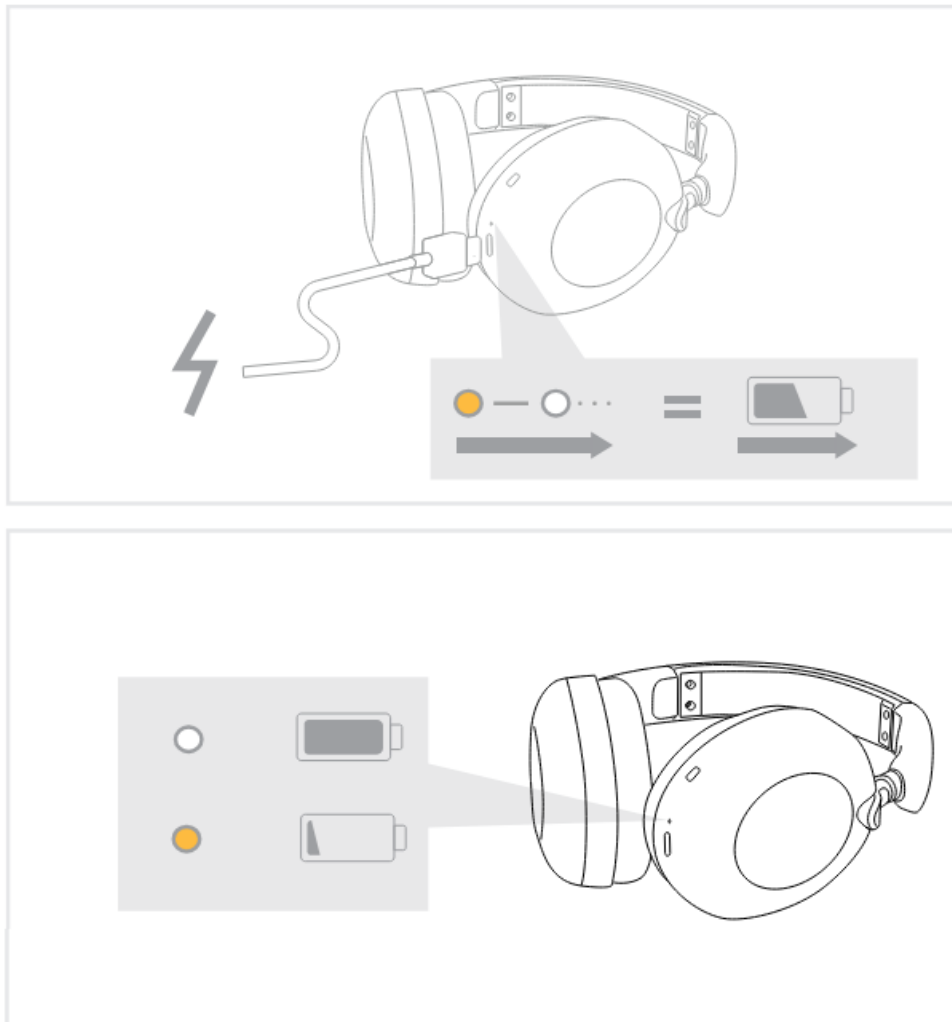


R



R





Studio Help Center



www.sudio.com/helpcenter

FCC STATEMENT

This device complies with Part 75 of the FCC Rules. Operation is subject to the following two conditions:

1. This device may not cause harmful interference, and
2. This device must accept any interference received, including interference that may cause undesired operation.

Warning: Changes or modifications not expressly approved by the party responsible for compliance could void the user's authority to operate the equipment.

NOTE: This equipment has been tested and found to comply with the limits for a Class B digital device, pursuant


to Part 15 of the FCC Rules. These limits are designed to provide reasonable protection against harmful interference in a residential installation. This equipment generates uses and can radiate radio frequency energy and, if not installed and used in accordance with the instructions, may cause harmful interference to radio communications. However, there is no guarantee that interference will not occur in a particular installation. If this equipment does cause harmful interference to radio or television reception, which can be determined by turning the equipment off and on, the user is encouraged to try to correct the interference by one or more of the following measures:

- Reorient or relocate the receiving antenna.
- Increase the separation between the equipment and receiver.
- connect the equipment into on outlet on o circuit different from thot to which the receiver is connected
- consult the dealer or on experienced radio/TV technician for help.

RF warning statement:

The device hos been evaluated to meat general RF exposure requirements The device con be used in portable exposure conditions without restriction.

Documents / Resources

	Sudio R3 Bluetooth Headphone [pdf] Owner's Manual R3 Bluetooth Headphone, R3, Bluetooth Headphone, Headphone
---	---

References

- [User Manual](#)

Manuals+. Privacy Policy

This website is an independent publication and is neither affiliated with nor endorsed by any of the trademark owners. The "Bluetooth®" word mark and logos are registered trademarks owned by Bluetooth SIG, Inc. The "Wi-Fi®" word mark and logos are registered trademarks owned by the Wi-Fi Alliance. Any use of these marks on this website does not imply any affiliation with or endorsement.