

Sudio E3 Hybrid Active Noise Cancelling Instruction Manual

sudio

Contents

1 E3

1.1 Owner's Manual

1.1.1 ANC and voice assistant

1.1.2 Included in the box:

1.1.3 Pairing to a device:

1.1.4 Playback operations:

1.1.5 Phone call operations

1.1.6 Battery indication

1.1.7 Charging:

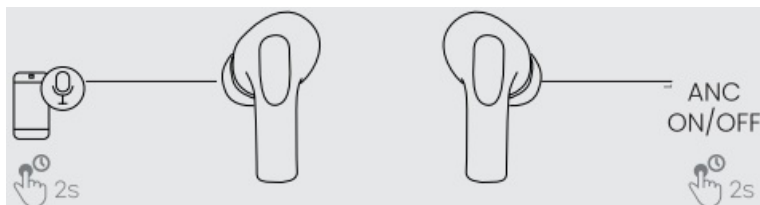
1.1.8 Factory reset:

2 Documents / Resources

2.1 References

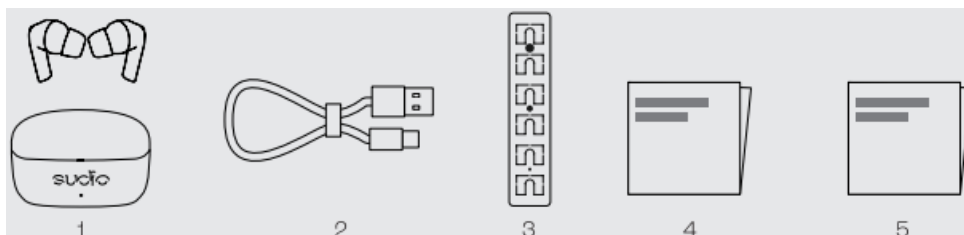
E3

Owner's Manual



ANC and voice assistant

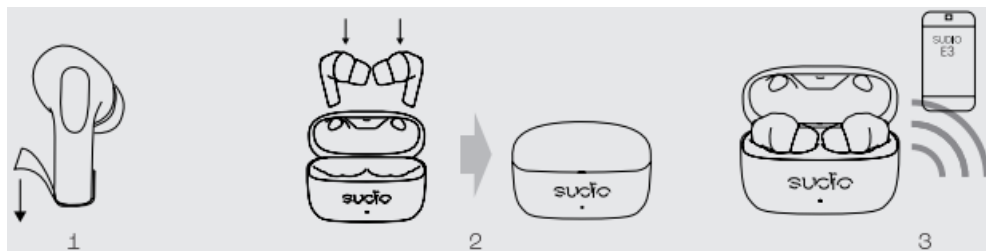
1. To turn Voice Assistant on/off hold L side for 2 sec
2. To turn ANC on/off hold R side for 2 sec



Included in the box:

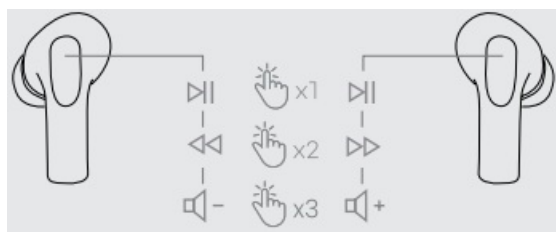
1. E3

2. Charging cable
3. Eartip holder
4. Warnings
5. Owners manual



Pairing to a device:

1. Remove protective stickers
2. Place earbuds in the charging case, close the lid
3. Open the lid and remove earbuds from the case, connect to device



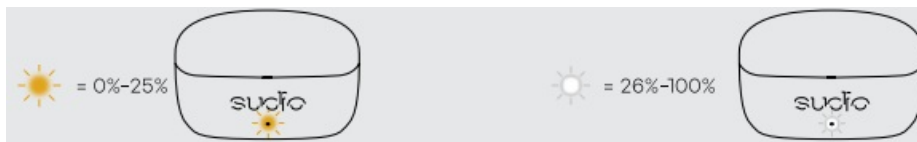
Playback operations:

- ▶▶ : 1 tap
 ◀◀ : Tap 2x left
 ▶▶ : Tap 2x right
 Vol ⬆ : Tap 3x right
 Vol ⬇ : Tap 3x left



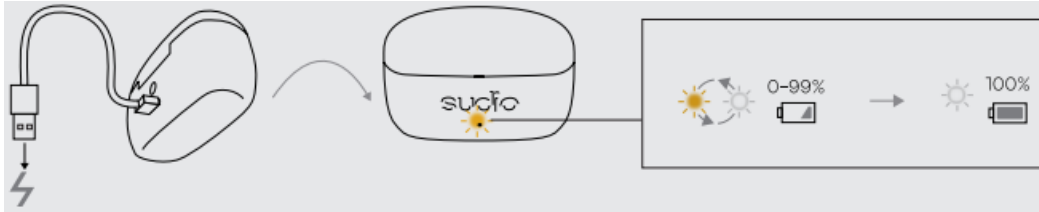
Phone call operations

- Accept calls: 1 tap
 Hang up or reject calls: Hold button 2 seconds



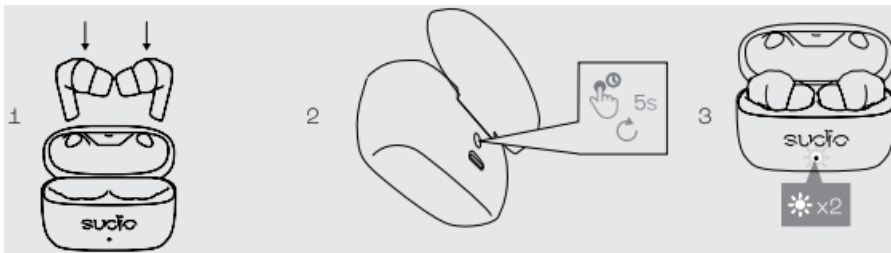
Battery indication

LED blinks amber light when low battery (0-25%), and white light between 26%-100%



Charging:

Charge with USB-C. Amber/
white light = charging.
White light = charged.



Factory reset:

1. Put earbuds in case
2. Hold button on case for 5 sec with lid open
3. Light blink 2x

FCC STATEMENT :

This device complies with Part 15 of the FCC Rules. Operation is subject to the following two conditions:

- (1) This device may not cause harmful interference, and
- (2) This device must accept any interference received, including interference that may cause undesired operation.

Warning: Changes or modifications not expressly approved by the party responsible for compliance could void the user's authority to operate the equipment.

NOTE: This equipment has been tested and found to comply with the limits for a Class B digital device, pursuant to Part 15 of the FCC Rules. These limits are designed to provide reasonable protection against harmful interference in a residential installation. This equipment generates uses and can radiate radio frequency energy and, if not installed and used in accordance with the instructions, may cause harmful interference to radio communications. However, there is no guarantee that interference will not occur in a particular installation. If this equipment does cause harmful interference to radio or television reception, which can be determined by turning the equipment off and on, the user is encouraged to try to correct the interference by one or more of the following measures:

Reorient or relocate the receiving antenna.

Increase the separation between the equipment and receiver.
Connect the equipment into an outlet on a circuit different from that to which the receiver is connected.
Consult the dealer or an experienced radio/TV technician for help.


RF warning statement:
The device has been evaluated to meet general RF exposure requirement. The device can be used in portable exposure condition without restriction.

Sudio Help Center



www.sudio.com/helpcenter

Documents / Resources

	<p>Sudio E3 Hybrid Active Noise Cancelling [pdf] Instruction Manual E3 Hybrid Active Noise Cancelling, E3, Hybrid Active Noise Cancelling, Active Noise Cancelling, Noise Cancelling, Cancelling</p>
--	---

References

- [User Manual](#)

[Manuals+](#), [Privacy Policy](#)

This website is an independent publication and is neither affiliated with nor endorsed by any of the trademark owners. The "Bluetooth®" word mark and logos are registered trademarks owned by Bluetooth SIG, Inc. The "Wi-Fi®" word mark and logos are registered trademarks owned by the Wi-Fi Alliance. Any use of these marks on this website does not imply any affiliation with or endorsement.